



## OVERVIEW

### MISSION

Instilling reliability for our services based on trust, staff expertise, creativity, and unmatched service.

### SERVICES

Civil  
Building Systems | MEP  
Structural  
Project Management

### ESTABLISHED

1973

### OWNERSHIP

Employee-owned (ESOP)

### KEY MARKETS

Commercial | Corporate  
Education  
Government  
Health Care  
Hospitality | Housing  
Industrial  
Recreation | Theme Parks  
Stormwater Management  
Water/WW Systems

### EDM INCORPORATED

220 Mansion House Center  
3rd Floor

St. Louis, MO 63102

314.231.5485

119 South Main Street

St. Charles, MO 63301

314.703.4754

850 Vandalia, Suite 250

Collinsville, IL 62234

618.344.3774

### CONTACT

Len Madalon, MS, PE

Senior Vice President

314.335.6945

ljm@edm-inc.com

www.edm-inc.com



EDM is an employee-owned professional design firm providing structural, civil, building systems (mechanical, electrical, plumbing) engineering and project management services, as well as complementary architectural services.

EDM encompasses engineering and project management under one roof, offering you complete project integration. Our services are available independently or jointly to build essential collaboration and coordination.

The breadth of project experience of our staff, from interior office renovation to 70,000-seat stadiums, provides EDM clients with virtually unlimited project capabilities.

### PROJECT TYPES

New Construction | Additions | Renovations  
Adaptive Reuse | Urban Retrofits  
Historic Restoration  
Water Quality | Creek Bank Stabilization  
Energy Studies | Feasibility Studies  
Facility Condition Assessments  
HVAC and Chillers | Air Quality  
Fire Protection | Life Safety  
Transportation Circulation | Parking, Garages  
HVAC Upgrades/Modernization  
Seismic Studies and Upgrades  
Site Development  
LEED/Sustainable Design  
Design/Build  
Value Engineering | BIM

## ROADWAY TRAILS SIDEWALKS



### ENGINEERING

Creative application of science, mathematics and experience



### DESIGN

Development of a sound concept for a project



### MANAGEMENT

Administration of a team to achieve success



### MISSOURI GOVERNMENT AND AGENCY CLIENTS

City of Branson	City of Manchester
City of Bridgeton	City of Maplewood
City of Clayton	City of Maryland Heights
City of Crestwood	City of O'Fallon
City of Creve Coeur	City of Overland
City of Dardenne Prairie	City of Rock Hill
City of Ellisville	City of St. Charles
City of Fenton	City of St. Louis
City of Ferguson	City of St. Peters
City of Florissant	City of Sullivan
City of Frontenac	City of Town & Country
City of Hazelwood	City of University City
City of Herculaneum	City of Webster Groves
City of Ladue	City of Wentzville
St. Charles County	St. Louis County
State of Missouri   Multiple Departments	
Ameren Missouri	
GSA   General Services Administration	
MSD   Metropolitan St. Louis Sewer District	
MoDOT   Missouri Department of Transportation	
St. Louis Lambert International Airport	
USACE   US Army Corps of Engineers	
US Department of Veterans Affairs	





## CIVIL ENGINEERING

### EDM HAS BEEN GREAT TO WORK WITH,

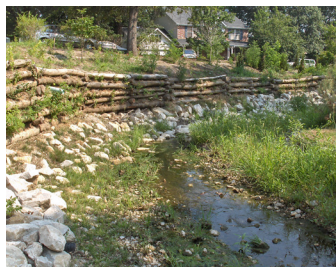
responsive to Frontenac's needs and resourceful in addressing issues and concerns that have arisen over the 13 years we have worked together.

Jeff Wappelhorst

Director of Public Works  
City of Frontenac, MO

### CIVIL DESIGN

Site Development  
Land-Use and Rezoning  
Roadways / Streets  
Water Supply System  
Creek Bank Stabilization  
Bio-Stabilization  
Stormwater (SW) Pollution Prevention Plans *SWPPP*  
SW Needs Assessments  
Sewer / SW Sewers  
Pump Stations  
CSO Control  
Permitting  
Utility Corridor Mapping  
SCADA Systems  
Feasibility Studies  
CSO Replacements  
Parking Analysis and Plans  
Permeable Pavements



### TRANSPORTATION

- City of Clayton | Bonhomme Garage
- City of Creve Coeur | Ladue and Spodee Intersection
- City of Fairview Heights | Kassing Drive, Summit Avenue
- City of O'Fallon, MO | Sonderen Bridge, Mexico Road Widening
- City of St. Charles, MO
  - Augusta Bottom Road Bridge Replacements
  - Hemsath Road Reconstruction
- City of St. Louis | Truman Boulevard Reconstruction
- St. Charles County | Multiple Projects
- St. Louis County | Multiple Projects
- St. Louis Lambert International Airport | Multiple Projects
- City of University City, MO | George Street Improvements
- City of Wentzville, MO | West Meyer Road and Replacement Bridge
- BJC HealthCare | Clayton Road Assessment
- MoDOT | Multiple Projects
- IDOT | Rest Areas, Storage Facilities, Maintenance Buildings

### STORMWATER | WATER | WASTEWATER

- Metropolitan St. Louis Sewer District | Multiple Projects
- City of Brentwood | Stormwater (SW) Ordinance
- City of Bridgeton | SW Detention Basin, SW Needs Assessment
- City of Crestwood | Whitecliff Park/Pardee Lane Feasibility Study
- City of Fenton | Fenpark Industrial Center Storm Sewers
- City of Frontenac | SW Designs, SW Master Plan, Rain Gardens
- City of Maryland Heights | Storm Sewers, Hydraulic Analysis/Design
- City of St. Peters | Multiple Bio-Stabilization of Stream Banks
- City of Town & Country | Nettle Creek LOMR
- City of Webster Groves | Rain Gardens, Stormwater Designs

### SITE DEVELOPMENT

- Ameren | Headquarters Entrance Redevelopment, St. Louis
- Anheuser-Busch | Northeast Campus, St. Louis
- Collinsville School District | High School Campus, Collinsville, IL
- First Bank | Branch Offices, Multiple Locations
- Foodmaker | Jack-in-the-Box Restaurants, Multiple Locations
- MasterCard | Global Technology Headquarters, O'Fallon, MO
- State of Missouri
  - Mark Twain State Park
  - Dept of Conservation | Columbia Bottom Conservation Area
  - Wappapello State Park | Visitors Center and Campgrounds
- City of O'Fallon, IL | O'Fallon Community Park
- Old Post Office | Plaza Renovation, St. Louis
- Rockwood School District | Multiple Projects, St. Louis
- City of St. Charles | Riverfront Park







## ROADWAYS AND BRIDGES

### SAFE, QUICK, RELIABLE AND EFFICIENT ARE THE TENETS of every

transportation project  
designed by EDM.

Our team looks at the  
planning, functional  
design, operation  
and management of  
infrastructure, with a  
focus on its economic and  
environmental impact.

### TRANSPORTATION DESIGN EXPERTISE

Curbs and Gutters  
Grading and Drainage  
Grant Assistance  
Land Use and Rezoning  
Life Cycle Cost Analysis  
Hydraulic Modeling  
Kiss and Ride Lots  
Parking Analysis and Plans  
Parking Garage  
Assessments  
Parking Lots and Garages  
Pedestrian Bridges  
Permeable Pavements  
Permitting  
Risk Management/Safety  
Road Bridges and Culverts  
Roadways and Streets  
SCADA Systems  
Seismic Improvements  
Sidewalk and Trails  
Site Development  
Stormwater Plans  
Utility Accommodation  
and Coordination  
Traffic Control Plans  
Transportation  
Engineering  
Wastewater Sewer Lines  
Construction Observation  
and Administration



**BELLEVILLE, IL** | North 23rd Street

**CLAYTON, MO** | Hillcrest and Wydown Terrace Subdivisions

**CREVE COEUR, MO** | Ladue and Spoede Intersection

**FAIRVIEW HEIGHTS, IL** | Summit Avenue, Kassing Drive

**FENTON, MO** | Woodway Subdivision Streets/Storm Sewers

**FLORISSANT, MO** | Shackelford Road Improvements

### FRONTENAC, MO

- Glen Abbey Road and Culvert
- Conway at Spoede Street Drainage

### HAZELWOOD, MO

- Fee Fee Road Improvements
- Teson Road Drainage Design and Culvert

### O'FALLON, MO

- Sonderen Road Bridge Replacement
- Mexico Road Widening

**OVERLAND, MO** | Woodson Road Reconstruction

**ROCK HILL, MO** | Kortwright Avenue, Madison Avenue

**ST. CHARLES, MO** | Hemsath Road Reconstruction

### ST. LOUIS, MO

- Gratton Street at Truman Parkway Reconstruction
- St. Louis Lambert International Airport | Multiple Projects

**ST. PETERS, MO** | Executive Centre Parkway and Bridge

**TOWN & COUNTRY, MO** | Clayton Road Improvements

**UNIVERSITY CITY, MO** | Heman Park Centennial Commons

**WENTZVILLE, MO** | West Meyer Road and Bridge Replacement

### MoDOT | MISSOURI DEPARTMENT OF TRANSPORTATION

- Hwy 21 Resurfacing, Jefferson County
- I-55 Ramps, Truman Parkway at Lafayette, St. Louis
- I-44 Updates and Overlay, St. Louis

### ST. CHARLES COUNTY, MO

- Augusta Bottom Bridge and Road Improvements
- Old Hwy 79 Bridge Replacements
- Pitman Hill Road Design and Hydraulic Study

### ST. LOUIS COUNTY, MO

- Barrett Station Road Improvements
- Laclede Station Road Improvements
- Mason Road Improvements





## TRAIL AND SIDEWALKS

### THE IMPACT OF TRAILS AND SIDEWALKS

EDM's experience covers a broad range of services that impact trails and sidewalks, including roadway reconstruction, widening, upgrades, new construction and related specialties including traffic, pedestrian safety, trail circulation, parking and signage.

EDM has designed trails or sidewalks for all projects listed at right.

### TRANSPORTATION DESIGN EXPERTISE

Curbs and Gutters  
Grading and Drainage  
Grant Assistance  
Land Use and Rezoning  
Life Cycle Cost Analysis  
Hydraulic Modeling  
Kiss and Ride Lots  
Parking Analysis and Plans  
Parking Lots and Garages  
Pedestrian Bridges  
Permeable Pavements  
Permitting  
Risk Management/Safety  
Road Bridges and Culverts  
Roadways and Streets  
SCADA Systems  
Seismic Improvements  
Sidewalk and Trails  
Site Development  
Stormwater Plans  
Utility Coordination  
Traffic Control Plans  
Transportation Engineering  
Construction Observation and Administration



**CLAYTON, MO** | Hillcrest and Wydown Terrace Subdivisions

**EAST ST. LOUIS, IL** | Malcolm W. Martin Memorial Park

**ELLISVILLE, MO** | Marsh at Hutchinson Improvements

**FAIRVIEW HEIGHTS, IL** | Summit Avenue, Kassing Drive

**FENTON, MO** | Woodway Subdivision Streets/Storm Sewers

**FLORISSANT, MO** | Shackelford Road Improvements

### FRONTENAC, MO

- Oak Valley-Hickory-Geyer Crossing
- Glen Abbey Road and Culvert
- Conway at Spoede Street Drainage

### HAZELWOOD, MO

- Hazelwood Park Trails
- Fee Fee Road and Sidewalk Improvements
- Teson Road Drainage Design and Culvert

### LEWIS & CLARK COMMUNITY COLLEGE

- National Great Rivers Research Center
- N.O. Nelson Campus

**MO DEPT OF CONSERVATION** | Columbia Bottom Conservation Area

**O'FALLON, MO** | Mexico Road Widening

**OVERLAND, MO** | Woodson Road Reconstruction

### ST. CHARLES, MO

- Hemsath Road Reconstruction
- Riverfront Park

**ST. LOUIS, MO** | Gratton Street at Truman Parkway Reconstruction

**ST. PETERS, MO** | Executive Centre Parkway and Bridge

**TOWN & COUNTRY, MO** | Clayton Road Improvements

**UNIVERSITY CITY, MO** | George Street Improvements

**WENTZVILLE, MO** | West Meyer Road and Bridge Replacement

**WILBUR PARK** | City-Wide Sidewalk Replacement

**MSD** | Lower Meramec WWTP Park

### ST. CHARLES COUNTY, MO

- Augusta Bottom Bridge and Road Improvements
- Pitman Hill Road Design and Hydraulic Study

### ST. LOUIS COUNTY, MO

- Barrett Station Road Improvements
- Laclede Station Road Improvements

