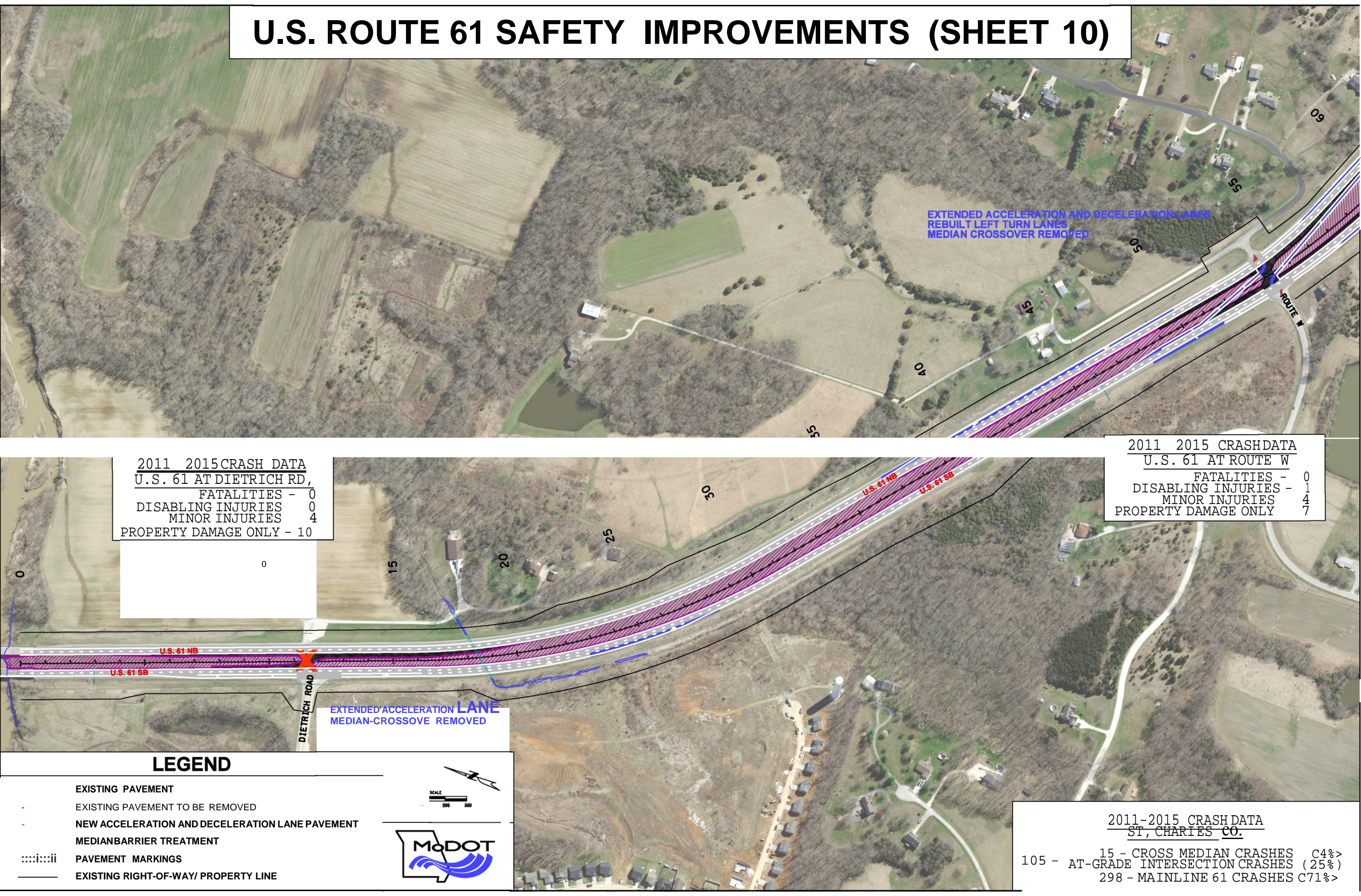


U.S. ROUTE 61 SAFETY IMPROVEMENTS (SHEET 10)

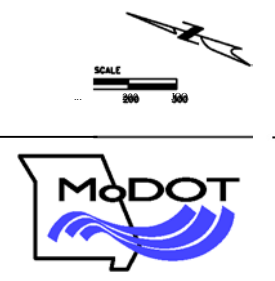


2011	2015	CRASH DATA
U.S. 61 AT DIETRICH RD,		
FATALITIES	-	0
DISABLING INJURIES	-	0
MINOR INJURIES	-	4
PROPERTY DAMAGE ONLY	-	10

2011	2015	CRASH DATA
U.S. 61 AT ROUTE W		
FATALITIES	-	0
DISABLING INJURIES	-	1
MINOR INJURIES	-	4
PROPERTY DAMAGE ONLY	-	7

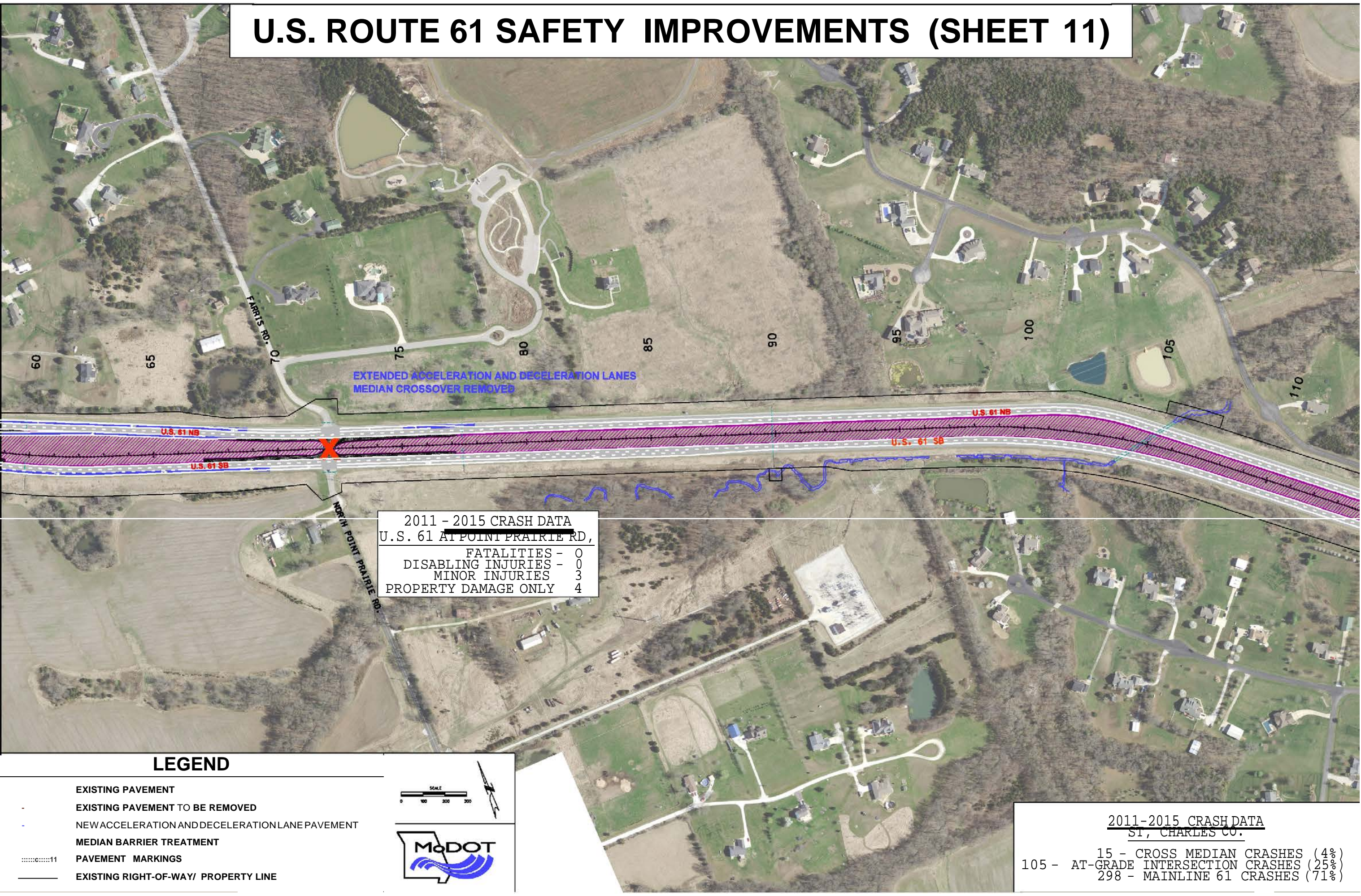
LEGEND

- EXISTING PAVEMENT
- EXISTING PAVEMENT TO BE REMOVED
- NEW ACCELERATION AND DECELERATION LANE PAVEMENT
- MEDIAN BARRIER TREATMENT
- PAVEMENT MARKINGS
- EXISTING RIGHT-OF-WAY/ PROPERTY LINE



2011-2015 CRASH DATA		
ST. CHARLES CO.		
105 -	15 - CROSS MEDIAN CRASHES	C4%>
	AT-GRADE INTERSECTION CRASHES	(25%)
	298 - MAINLINE 61 CRASHES	C71%>

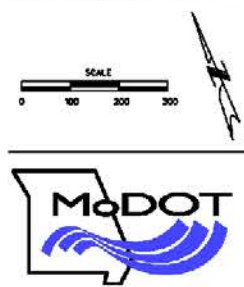
U.S. ROUTE 61 SAFETY IMPROVEMENTS (SHEET 11)



2011 - 2015 CRASH DATA	
U.S. 61 AT POINT PRAIRIE RD,	
FATALITIES -	0
DISABLING INJURIES -	0
MINOR INJURIES	3
PROPERTY DAMAGE ONLY	4

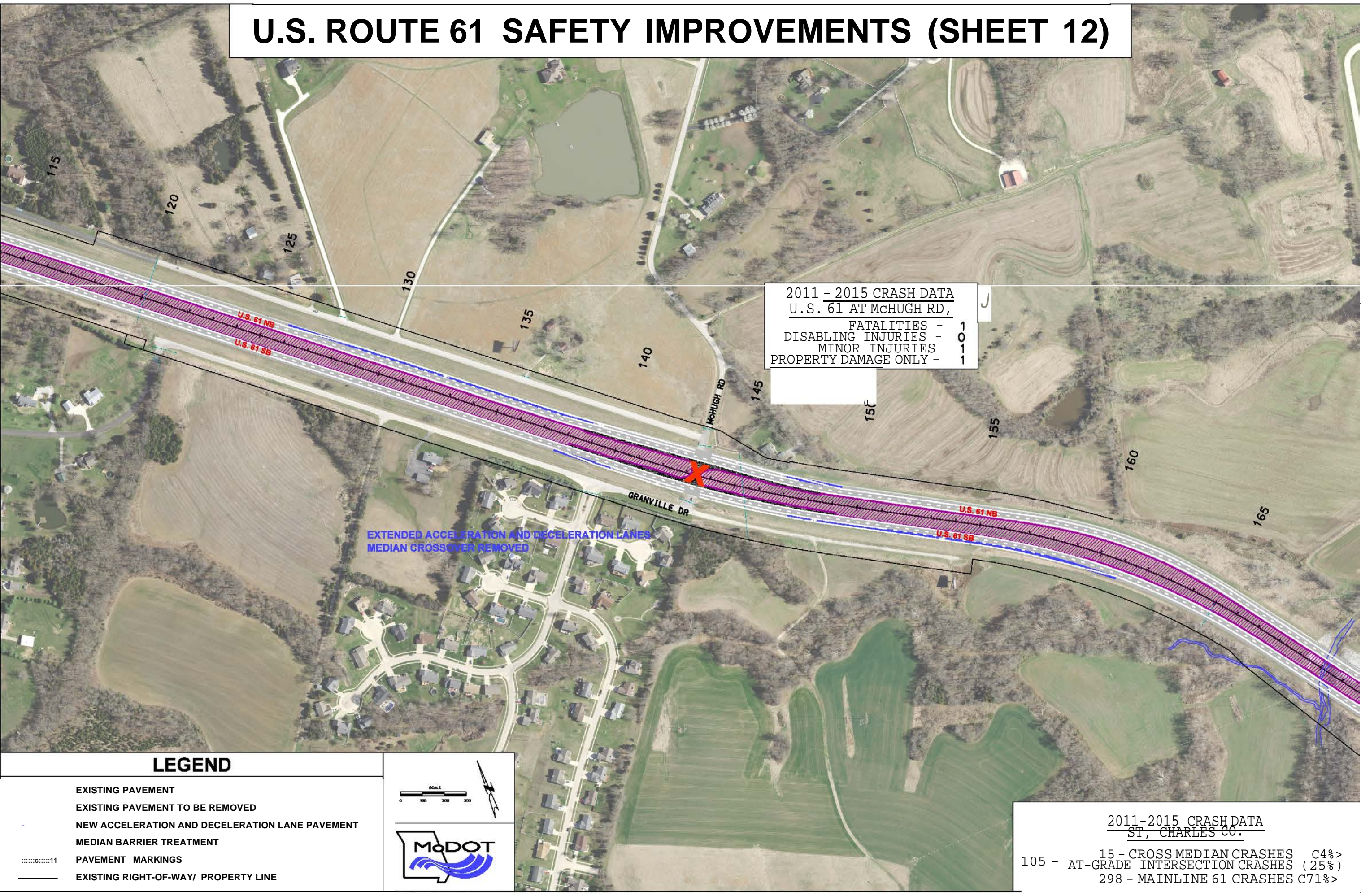
LEGEND

- EXISTING PAVEMENT
- EXISTING PAVEMENT TO BE REMOVED
- NEW ACCELERATION AND DECELERATION LANE PAVEMENT
- MEDIAN BARRIER TREATMENT
- PAVEMENT MARKINGS
- EXISTING RIGHT-OF-WAY/ PROPERTY LINE



2011-2015 CRASH DATA	
ST, CHARLES CO.	
105 -	15 - CROSS MEDIAN CRASHES (4%)
	AT-GRADE INTERSECTION CRASHES (25%)
298 -	MAINLINE 61 CRASHES (71%)

U.S. ROUTE 61 SAFETY IMPROVEMENTS (SHEET 12)



2011 - 2015 CRASH DATA	
U.S. 61 AT McHUGH RD,	
FATALITIES -	1
DISABLING INJURIES -	0
MINOR INJURIES -	1
PROPERTY DAMAGE ONLY -	1

EXTENDED ACCELERATION AND DECELERATION LANES
MEDIAN CROSSOVER REMOVED

LEGEND

- EXISTING PAVEMENT
- EXISTING PAVEMENT TO BE REMOVED
- NEW ACCELERATION AND DECELERATION LANE PAVEMENT
- MEDIAN BARRIER TREATMENT
- PAVEMENT MARKINGS
- EXISTING RIGHT-OF-WAY/ PROPERTY LINE

SCALE
0 100 200 300

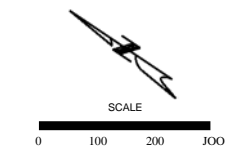


2011-2015 CRASH DATA ST, CHARLES CO.

105 - 15 - CROSS MEDIAN CRASHES C4%>
AT-GRADE INTERSECTION CRASHES (25%)
298 - MAINLINE 61 CRASHES C71%>

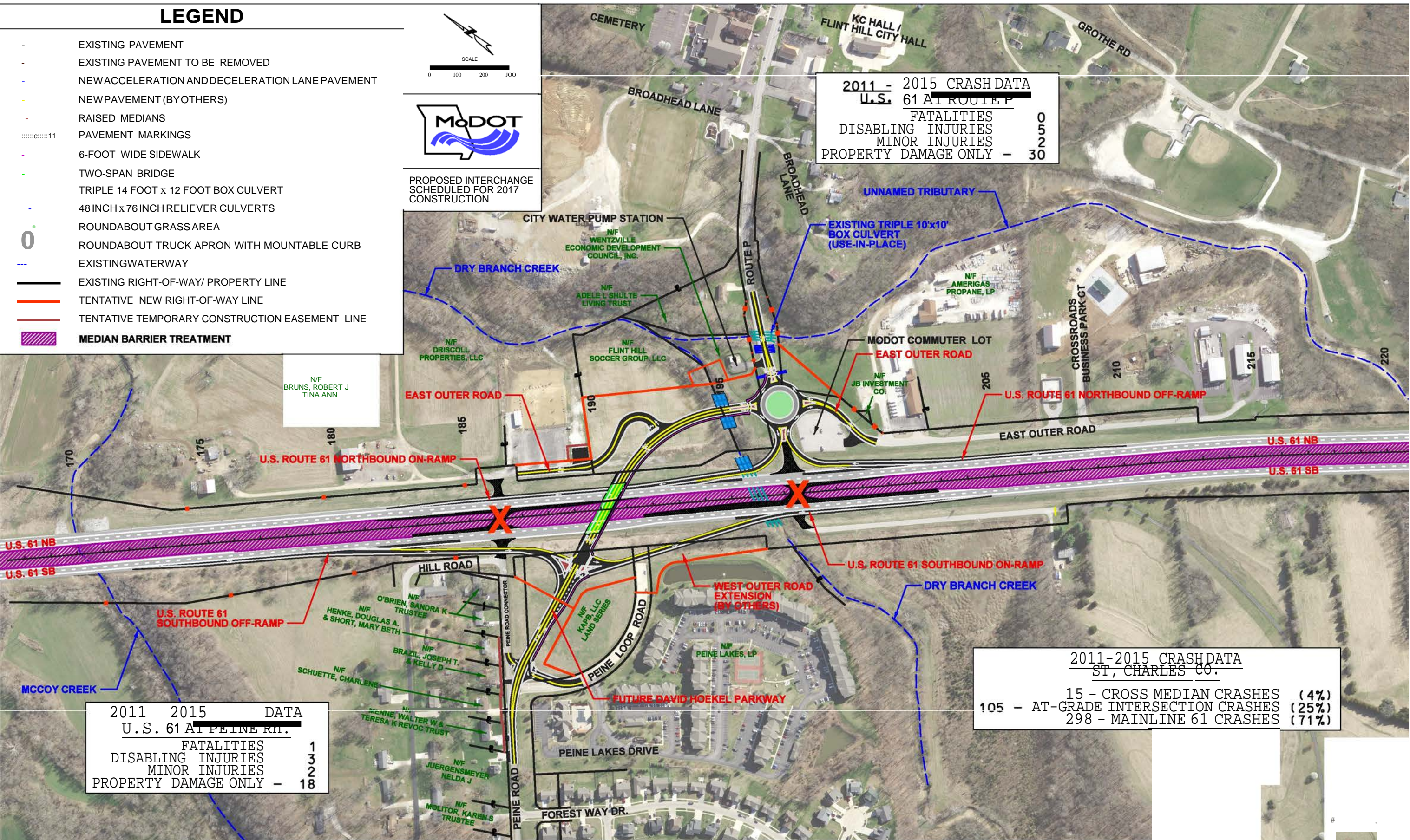
LEGEND

- EXISTING PAVEMENT
- EXISTING PAVEMENT TO BE REMOVED
- NEW ACCELERATION AND DECELERATION LANE PAVEMENT
- NEW PAVEMENT (BY OTHERS)
- RAISED MEDIANS
- PAVEMENT MARKINGS
- 6-FOOT WIDE SIDEWALK
- TWO-SPAN BRIDGE
- TRIPLE 14 FOOT x 12 FOOT BOX CULVERT
- 48 INCH x 76 INCH RELIEVER CULVERTS
- ROUNDABOUT GRASS AREA
- ROUNDABOUT TRUCK APRON WITH MOUNTABLE CURB
- EXISTING WATERWAY
- EXISTING RIGHT-OF-WAY / PROPERTY LINE
- TENTATIVE NEW RIGHT-OF-WAY LINE
- TENTATIVE TEMPORARY CONSTRUCTION EASEMENT LINE
- MEDIAN BARRIER TREATMENT



PROPOSED INTERCHANGE
SCHEDULED FOR 2017
CONSTRUCTION

2011 - 2015 CRASH DATA	
U.S. 61 AT ROUTE P	
FATALITIES	0
DISABLING INJURIES	5
MINOR INJURIES	2
PROPERTY DAMAGE ONLY	30

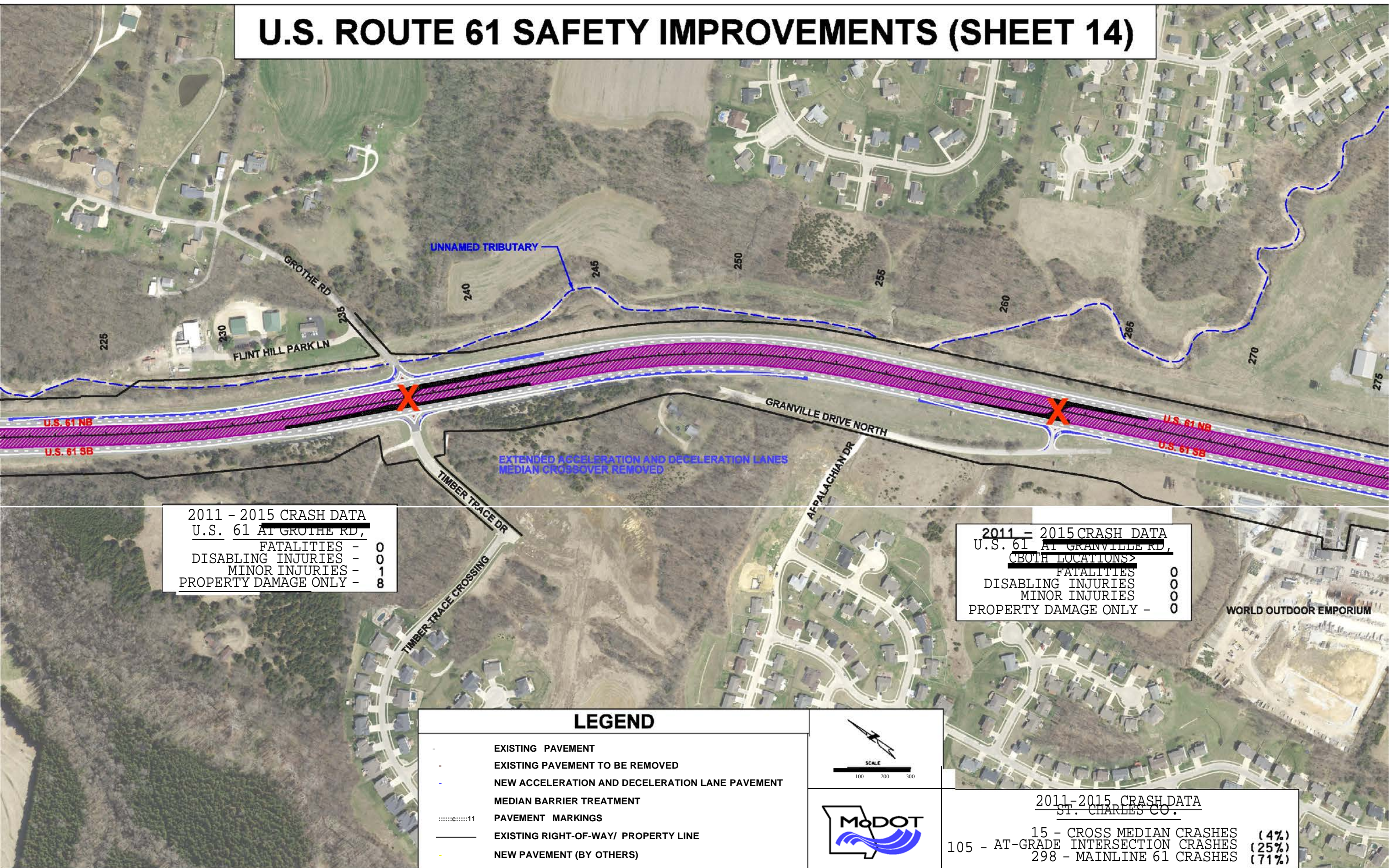


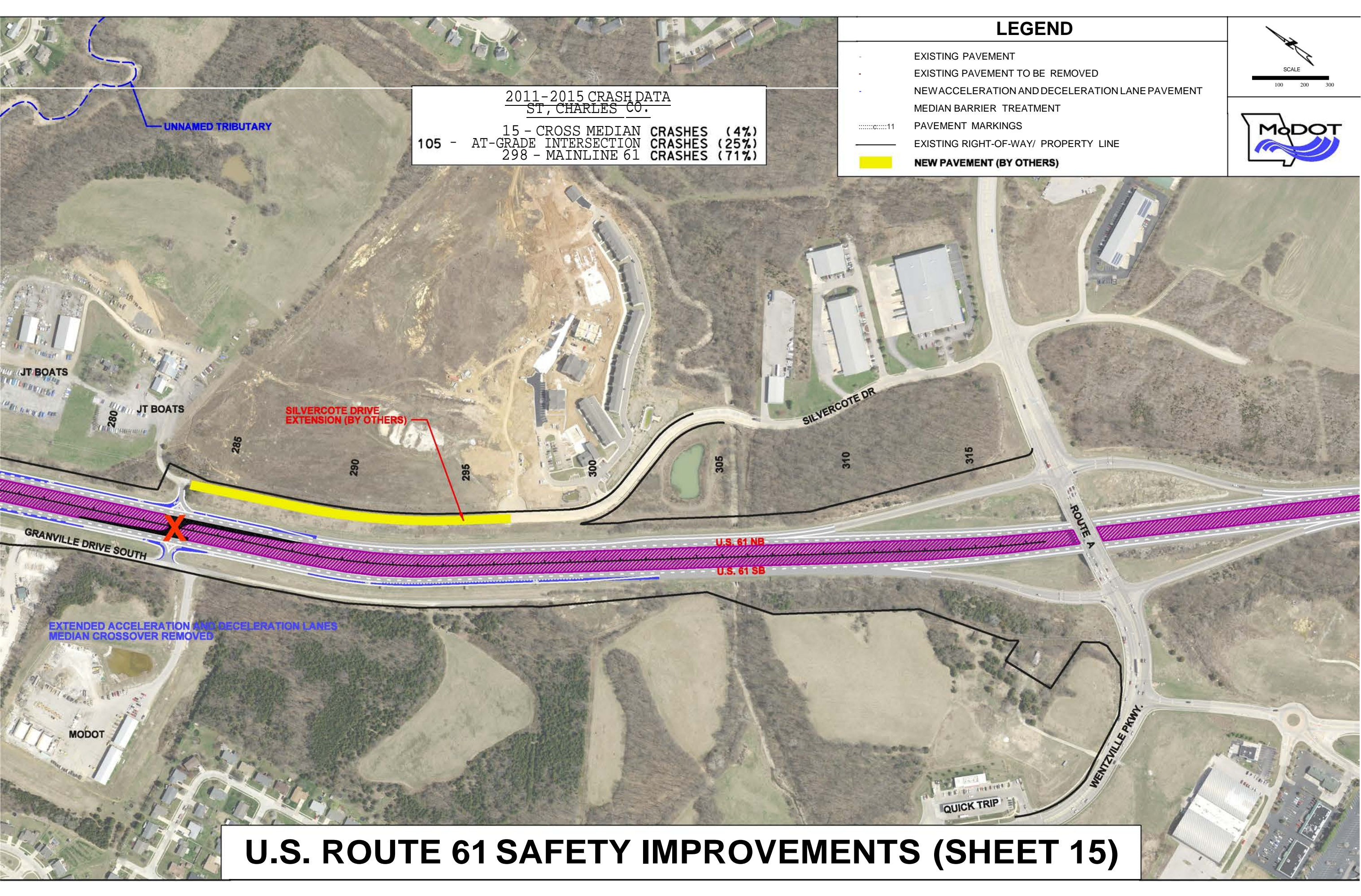
2011	2015	DATA
U.S. 61 AT PEINE RD.		
FATALITIES	1	
DISABLING INJURIES	3	
MINOR INJURIES	2	
PROPERTY DAMAGE ONLY	18	

2011-2015 CRASH DATA	
ST. CHARLES CO.	
15 - CROSS MEDIAN CRASHES	(4%)
105 - AT-GRADE INTERSECTION CRASHES	(25%)
298 - MAINLINE 61 CRASHES	(71%)

U.S. ROUTE 61 / ROUTE P INTERCHANGE {SHEET 13}


U.S. ROUTE 61 SAFETY IMPROVEMENTS (SHEET 14)






2011-2015 CRASH DATA ST. CHARLES CO.			
105 -	15 - CROSS MEDIAN	CRASHES	(4%)
	AT-GRADE INTERSECTION	CRASHES	(25%)
	298 - MAINLINE 61	CRASHES	(71%)

LEGEND	
-	EXISTING PAVEMENT
-	EXISTING PAVEMENT TO BE REMOVED
-	NEW ACCELERATION AND DECELERATION LANE PAVEMENT
-	MEDIAN BARRIER TREATMENT
-----11	PAVEMENT MARKINGS
---	EXISTING RIGHT-OF-WAY/ PROPERTY LINE
■	NEW PAVEMENT (BY OTHERS)

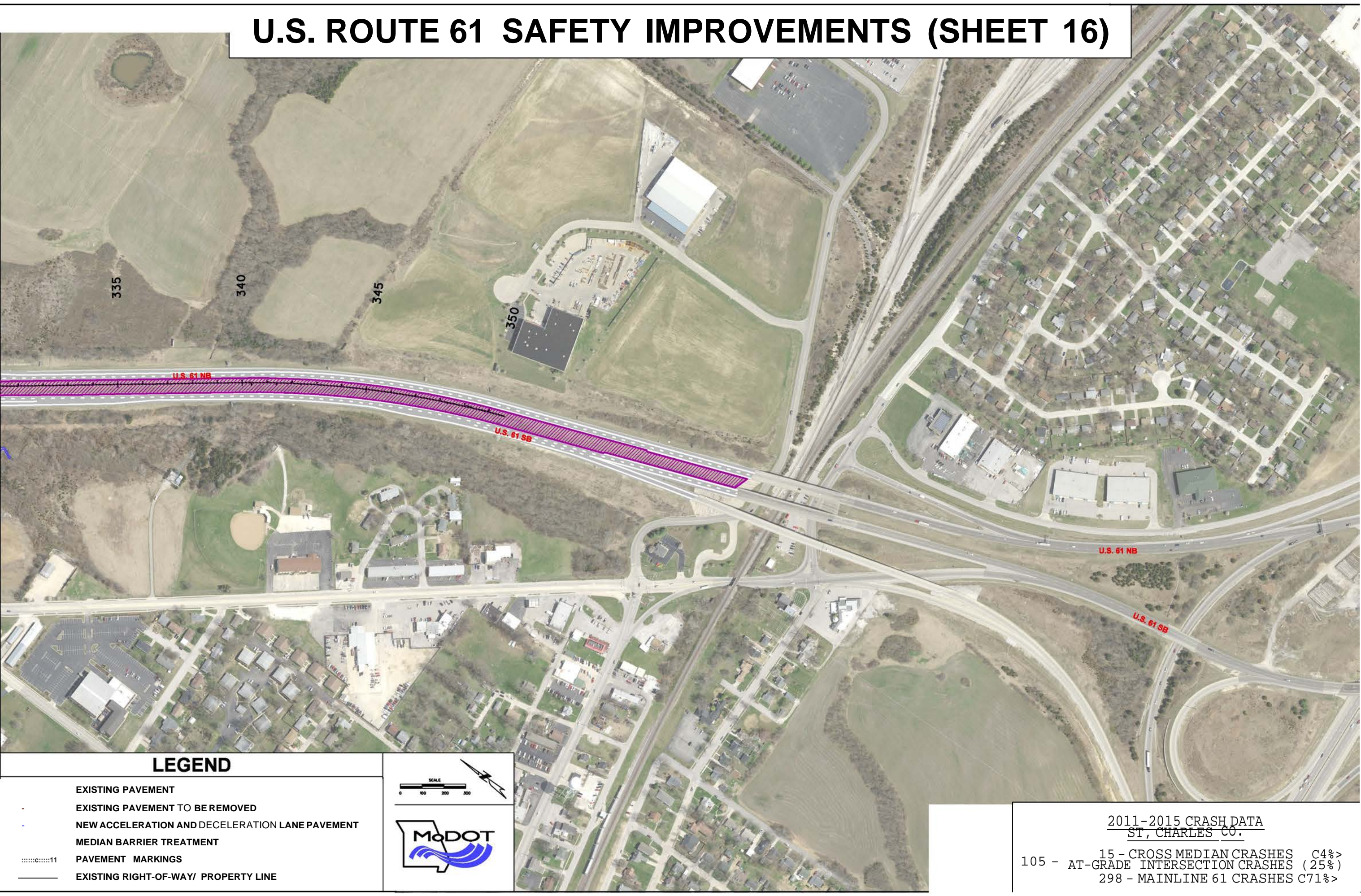


SCALE
100 200 300



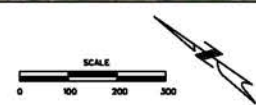
U.S. ROUTE 61 SAFETY IMPROVEMENTS (SHEET 15)

U.S. ROUTE 61 SAFETY IMPROVEMENTS (SHEET 16)



LEGEND

- EXISTING PAVEMENT
- EXISTING PAVEMENT TO BE REMOVED
- NEW ACCELERATION AND DECELERATION LANE PAVEMENT
- MEDIAN BARRIER TREATMENT
-11 PAVEMENT MARKINGS
- EXISTING RIGHT-OF-WAY/ PROPERTY LINE



2011-2015 CRASH DATA ST. CHARLES CO.

105 - 15 - CROSS MEDIAN CRASHES C4%>
AT-GRADE INTERSECTION CRASHES (25%)
298 - MAINLINE 61 CRASHES C71%>