

Addendum No. 1

October 1, 2012

RE: Business M-7 Highway Improvements – Cass County
Route 7 to Route 58
For City of Pleasant Hill, Missouri
Federal Project No. STP-3301(460)

FROM: Affinis Corp.
7401 West 129th Street, Suite 110
Overland Park, Kansas 66213
(913) 239-1484, FAX (913) 239-1111

Bid Date Remains October 5th, 2:00 P.M. at the Pleasant Hill, Missouri City Hall

TO: Planholders

This addendum forms a part of the Contract Documents and modifies the work. Acknowledge receipt of this addendum and submit with Proposal form. Failure to do so may subject the Bidder to disqualification.

The Bidder shall acknowledge receipt of the Addendum and his acceptance of its conditions by signing the Addendum and submitting with Proposal.

Bidder _____

By _____ Title _____

PROJECT MANUAL

1. This is notification that the Notice to Proceed will be given on March 18, 2013 for this project. Once the project has been given the approval to proceed from MoDOT and FHWA and provided all requirements have been met in accordance with Section 108.2 of the Missouri Standard Specifications for Highway Construction, the contractor may begin work early between December 15, 2012 and March 17, 2013 without accumulating calendar days.
2. No bid will be considered unless accompanied by a bid guaranty of five percent (5%). As stated in the request for bid, the bid guaranty can be in the form of a cashier's check, certified check or bid bond. The Bid Bond form in the request for bid has been revised to show the City of Pleasant Hill, Missouri as the owner of the project and is attached to this addendum. Either the attached bid bond or the A.I.A. bid bond may be used for this project.

3. Asphalt patching and aggregate for curb replacement shall be subsidiary to APWA Concrete Curb and Gutter Type CG-1 and shall follow the attached detail.
4. As stipulated in Job Special Provisions I, the bid item 3" APWA 3-01 Asphalt Surface shall follow the current edition of the APWA Standard Specifications Section 2200. This project is a resurfacing project and recycled materials may be used meeting the requirements of the specification.
5. The square yard quantity for the bid item Concrete Crosswalk includes the entire seven foot (7') crosswalk.
6. Attached are highlighted Special Ramp Detail Sheets (Sheets 16-19) to clarify the pay limits for the bid item Concrete Curb Ramps. As shown on sheet 2 in the quantity table "Curb Ramps and Curb & Gutter" and following MoDOT specifications, the bid item Concrete Curb Ramps is 6" thick. The attached drawings show in yellow highlight the areas that are to be paid as Concrete Curb Ramps. All other areas are to be paid as Concrete Sidewalk (4"). There is a note on the sheets (Curb Ramp Pay Limits) pointing to the area to be paid for as Concrete Curb Ramps. The darkened outline of the pay limits did not come through on the plan drawings.

The tables on sheets 18 and 19 have also been updated to include the types of ramps for ramps C-58 through C-63 and ramps D-11 through D-20. These ramps were left out of the ramp type tables but were included in the ramp and sidewalk quantities.

Attachments to the addendum are as follows:

1. Bid Bond Form
2. Curb Replacement Detail
3. Special Ramp Detail Sheets 16-19

BID BOND

KNOW ALL PERSONS BY THESE PRESENTS, that we _____

as principal and _____
as surety, are held and firmly bound unto the City of Pleasant Hill, Cass County, Missouri, in the penal sum
of _____
Dollars (\$) _____) to be paid to the city, the principal and surety binding themselves,
their heirs, executors, administrators, successors, and assigns, jointly and severally, firmly by these presents.

Sealed with our seals and dated this _____

THE CONDITION OF THIS OBLIGATION is such that

WHEREAS the principal is submitting herewith a bid to the city on route(s) _____

in _____
project (s) _____ County(ies),

_____ for construction or improvement of state highway as set out in said bid;

NOW THEREFORE, if the city shall accept the bid of the principal and if the principal shall properly execute and deliver to the city the contract, contract bond, and evidence of insurance coverage in compliance with the requirements of the bid, the specifications, and the provisions of section 227.100 RSMo, to the satisfaction of the city, then this obligation shall be void and of no effect, otherwise to remain in full force and effect.

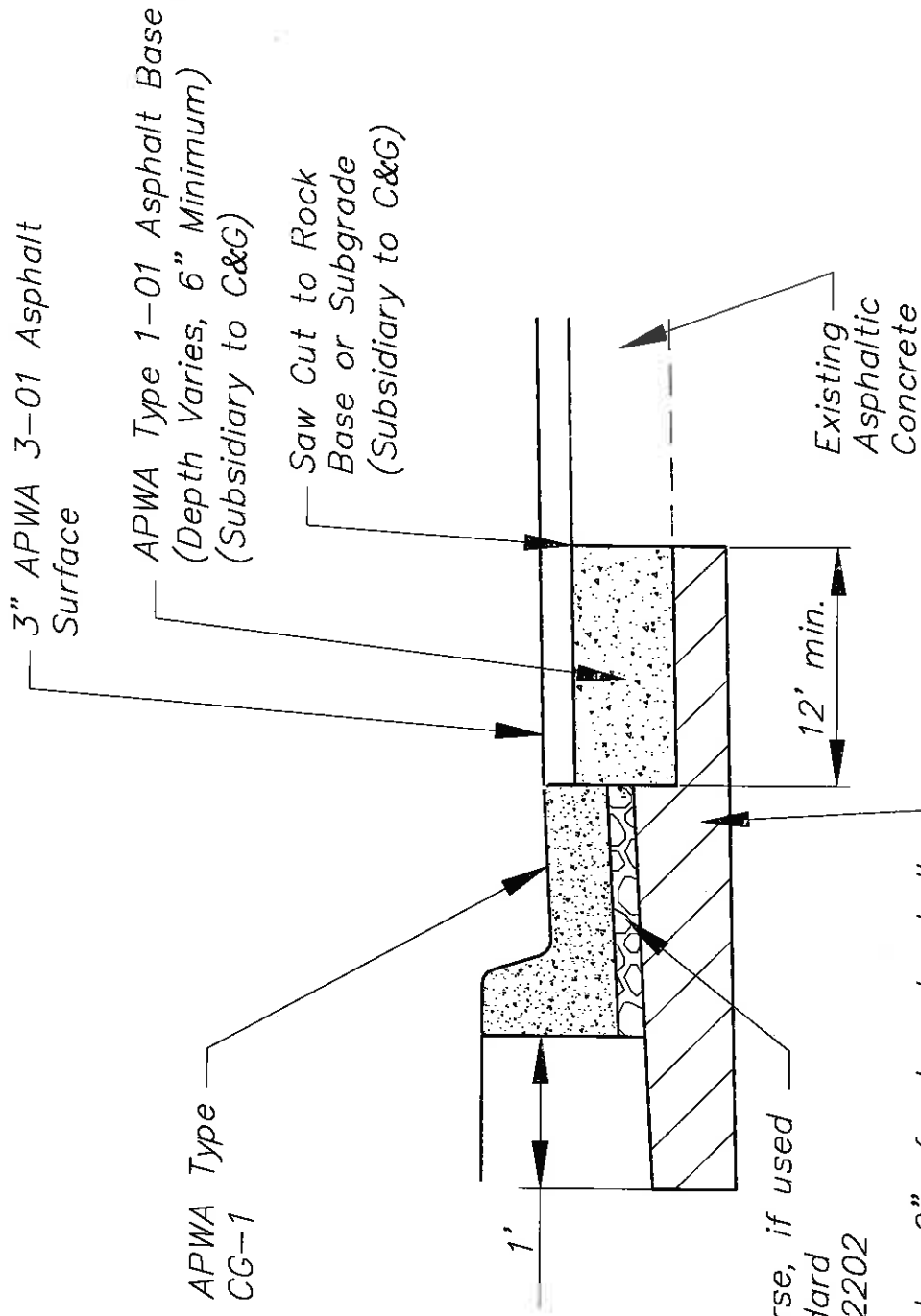
In the event the said principal shall, in the judgment of the city, fail to comply with any requirement as set forth in the preceding paragraph, then the City of Pleasant Hill, shall immediately and forthwith be entitled to recover the full penal sum above set out, together with court costs, attorney's fees, and any other expense of recovery.

The principal and surety hereby certify that the document is the original or a verbatim copy of the bid bond form furnished by the City, in accordance with Sec 102.9 of the Missouri Standard Specifications for Highway Construction.

SEAL _____
By _____
Principal
Signature

SEAL _____
By _____
Surety
Signature of Attorney in Fact

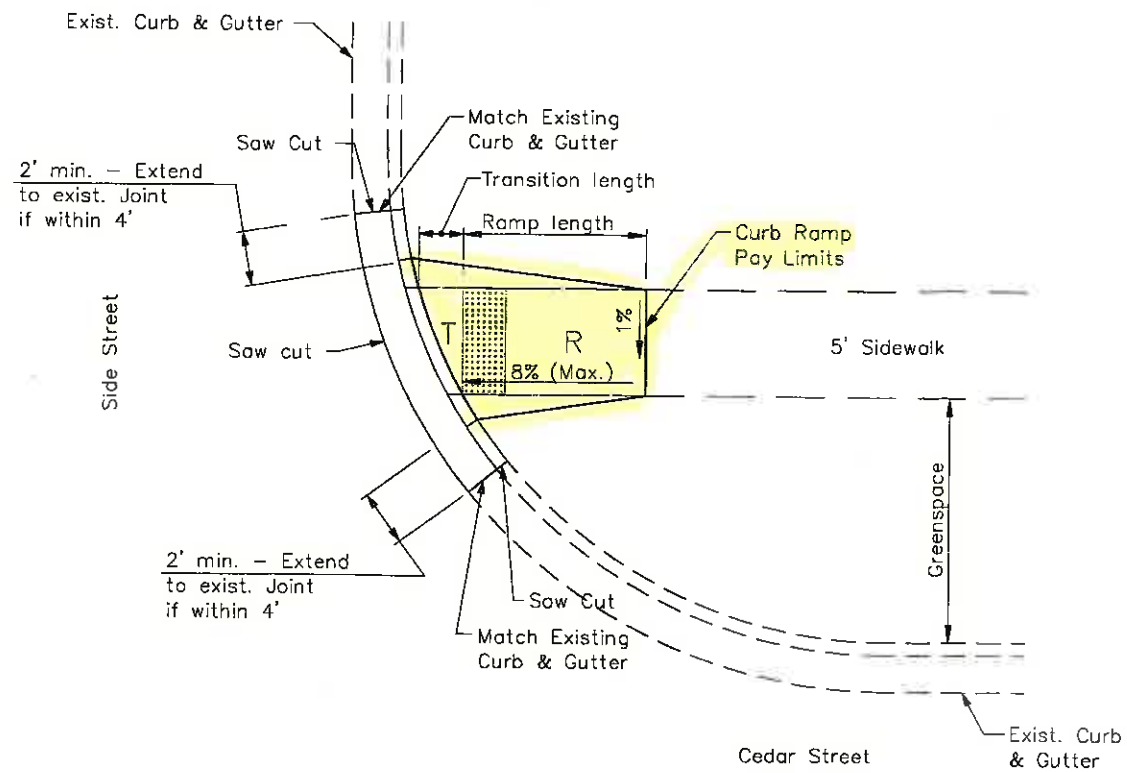
NOTE: This bond must be executed by the principal, and by a corporate surety authorized to conduct surety business in the state of Missouri.



Aggregate leveling course, if used shall conform to Standard Specifications Section 2202 (Subsidiary to C&G)

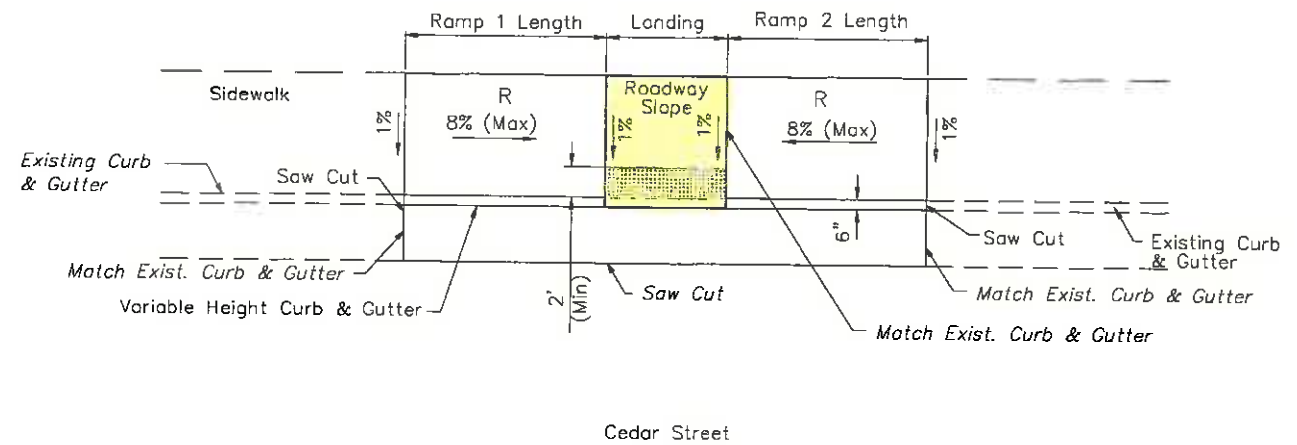
The top 9" of subgrade shall conform to Standard Specifications Section 2201 (Subsidiary to C&G)

CURB REPLACEMENT DETAIL



TYPE A CURB RAMP

TYPE A			
CURB RAMP NO.	LOCATION LT/RT	RAMP WIDTH	RAMP LENGTH
C-1	RT	5	6.4
C-2	LT	5	7
C-3	LT	5	7
C-4	LT	5	7
C-7	RT	5	7
C-8	RT	5	7
C-11	RT	5	7
C-12	RT	5	7
C-46	RT	4	3
C-47	RT	4	9.5
C-48	RT	4	9.5
C-49	RT	4	3.0



TYPE B CURB RAMP

TYPE B				
CURB RAMP NO.	LOCATION LT/RT	RAMP WIDTH	RAMP LENGTH 1	RAMP LENGTH 2
C-5	LT	5	5	7
C-6	LT	5	4	8
C-9	LT	5	10	16

9/10/2012 11:42 AM

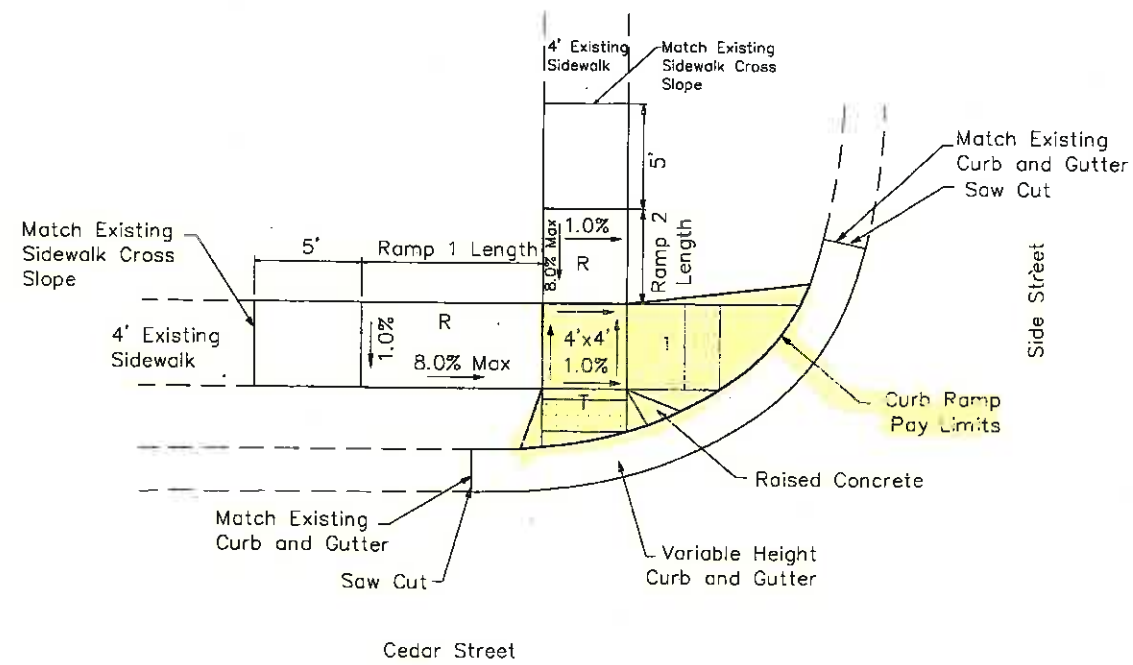
Drawn: BLM	Checked: MPH	Approved: MPH
03/04/2012	04/16/2012	07/13/2012
Final Plans to City	Final Plans to MUDOT	Final Plans to MUDOT
BLM	BLM	BLM
TDL	TDL	TDL
MPH	MPH	MPH
09/05/2012	09/05/2012	09/05/2012
BLM	BLM	BLM
TDL	TDL	TDL
MPH	MPH	MPH

7401 West 128th Street, Suite 110
 Overland Park, Kansas 66213
 Phone: 913-238-1100
 Fax: 913-238-1111
 www.affinis.us
 Building long-lasting relationships

Affinis
 CORP
 ENGINEERS • PLANNERS • CONSULTANTS
 MISSOURI CERTIFICATE OF AUTHORITY # 2000175356

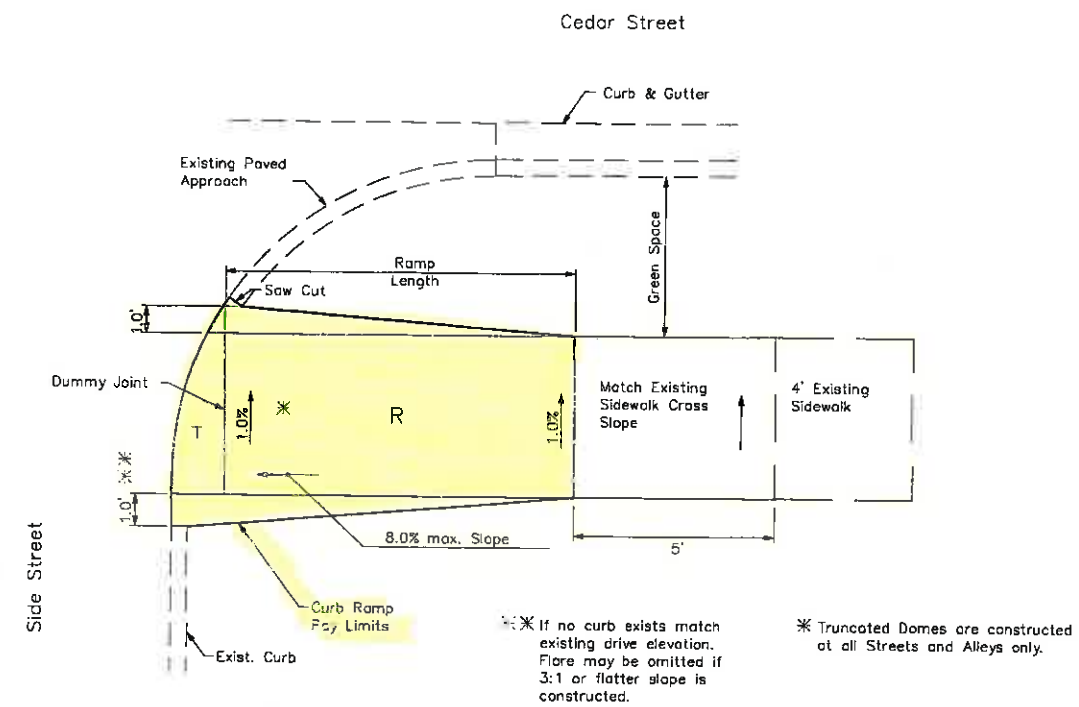
BUSINESS M-7 HIGHWAY IMPROVEMENTS
 PLEASANT HILL, CASS COUNTY, MISSOURI
 STP-3301(460)
 SPECIAL RAMP DETAIL (1 of 4)

STATE OF MISSOURI
 LINDA C. ROTTINGHAUS
 ENGINEER
 NO. 025151
 LINDA C. ROTTINGHAUS
 ENGINEER
 MO PE-025151



TYPE C CURB RAMP

TYPE C				
CURB RAMP NO.	LOCATION LT/RT	RAMP WIDTH	RAMP LENGTH 1	RAMP LENGTH 2
C-14	LT	4	5	5
C-15	LT	4	5	7
C-16	RT	4	5	16
C-23	LT	4	5	10
C-24	RT	4	5	10
C-25	RT	4	10	5
C-30	LT	4	10	9
C-31	LT	4	10.5	16
C-32	RT	4	5	16
C-33	RT	4	10	5
C-38	LT	4	5	16
C-40	RT	4	5	16
C-41	RT	4	5	5
C-54	LT	4	16	7.5
C-55	LT	4	10	20
C-56	RT	4	16	
C-57	RT	4	10	



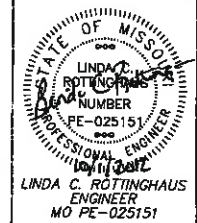
TYPE D CURB RAMP

TYPE D			
CURB RAMP NO.	LOCATION LT/RT	RAMP WIDTH	RAMP LENGTH
D-1	LT	4	5
D-2	LT	4	5
D-3	RT	4	5
D-4	RT	4	5
D-18	LT	4	5
C-19	LT	4	5
C-20	RT	4	5
C-21	RT	4	7
C-26	LT	4	5
C-27	LT	4	10.5
C-28	RT	4	5
C-29	RT	4	5
D-5	RT	4	16
D-6	RT	4	5
C-34	LT	4	5
C-35	LT	4	5
C-36	RT	4	5
C-37	RT	4	5
D-7	RT	4	5
D-8	RT	4	5
C-42	RT	4	5
C-43	RT	4	5
D-9	LT	4	16
D-10	LT	4	16
C-50	LT	4	5
C-51	LT	4	5
C-52	RT	4	5
C-53	RT	4	5

TYPE D			
CURB RAMP NO.	LOCATION LT/RT	RAMP WIDTH	RAMP LENGTH
C-58	LT	4	5
C-59	LT	4	5
D-11	LT	4	15
D-12	LT	4	16
D-13	LT	4	10
D-14	LT	4	16
D-15	LT	4	16
D-16	LT	4	16
D-17	LT	4	16
D-18	LT	4	16
D-19	LT	4	16
D-20	LT	4	16



BUSINESS M-7 HIGHWAY IMPROVEMENTS
PLEASANT HILL, CASS COUNTY, MISSOURI
SIP-3301(460)
SPECIAL RAMP DETAIL (2 of 4)



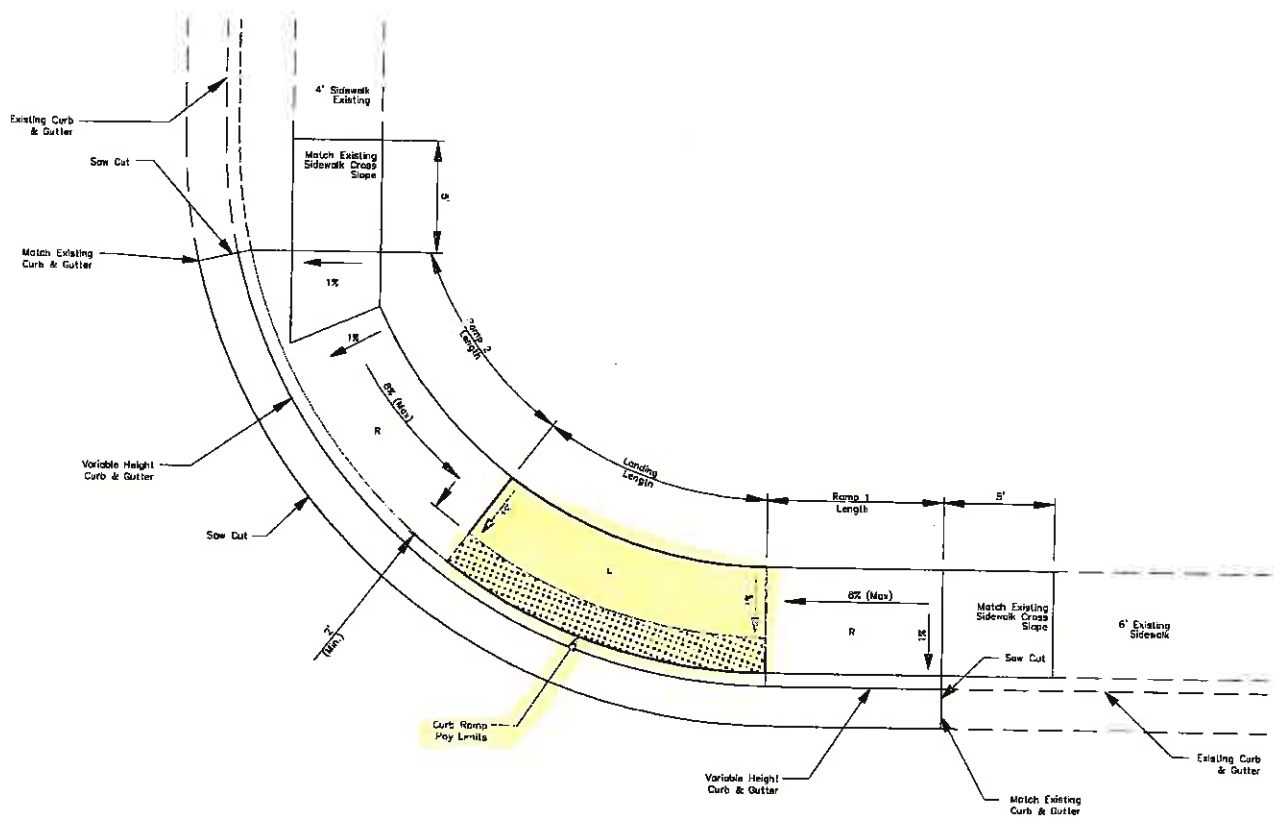
7401 West 129th Street, Suite 110
Overland Park, Kansas 66213
Phone: 913-238-1100
Fax: 913-238-1111
www.affinis.us

ENGINEERS • PLANNERS • CONSULTANTS
MISSOURI CERTIFICATE OF AUTHORITY # 2000175356

Building long-lasting relationships

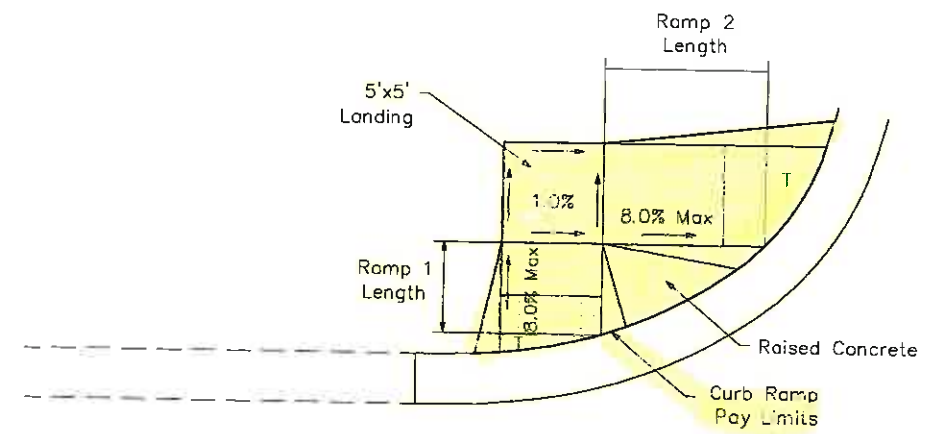
Drawn: Designer Approved: LCR MPH
23/04/2012 Prel. Plans to City: BIM MPH
24/06/2012 Prel. Plans to MODOT: BIM MPH
27/03/2012 Final Plans to MODOT: BIM MPH
29/05/2012 Bid Plans: BIM MPH

Filename: G:\17-034-00\PLANS\DWG-109-00-001.dwg
Job #: 17-034-02
Date: 05/24/12



TYPE G CURB RAMP

TYPE G				
CURB RAMP NO.	LOCATION LT/RT	RAMP WIDTH	RAMP 1 LENGTH	RAMP 2 LENGTH
C-39	LT	4	16	10
C-44	LT	4	15	15



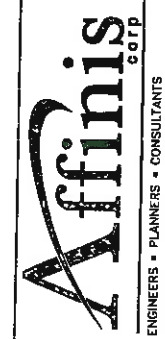
TYPE H CURB RAMP

TYPE H				
CURB RAMP NO.	LOCATION LT/RT	RAMP WIDTH	RAMP 1 LENGTH	RAMP 2 LENGTH
C-10	LT	5	7	5
C-13	LT	4	5	6

9/10/2012 11:43 AM

Issued:	03/09/2012	Checked:	BAM
Drawn:	04/18/2012	City:	LCR
Noted:	07/13/2012	State:	LCR
	09/09/2012	Proj. Name:	LCR
		Proj. No.:	LCR
		Proj. Name:	LCR
		Proj. No.:	LCR
		Proj. Name:	LCR
		Proj. No.:	LCR

7401 West 129th Street, Suite 110
 Overland Park, Kansas 66213
 Phone: 913-239-1100
 Fax: 913-239-1111
 www.affinis.us



ENGINEERS • PLANNERS • CONSULTANTS
 MISSOURI CERTIFICATE OF AUTHORITY # 2000175156

BUSINESS M-7 HIGHWAY IMPROVEMENTS
 PLEASANT HILL, CASS COUNTY, MISSOURI
 STP-3301(460)
 SPECIAL RAMP DETAIL (4 of 4)

