

# **EMANUEL CLEAVER II BOULEVARD STREETScape IMPROVEMENTS PHASES 1 & 2**

Kansas City, Missouri Project # G70091307

Federal Project # STP-3387(406)

## **ADDENDUM #1**

### **PROJECT MANUAL**

1. Invitation to Bid, Page 1 of 2, (pdf page 11) paragraph 1, is revised as follows:

**Sealed Bids for EMANUEL CLEAVER II BOULEVARD STREETScape IMPROVEMENTS - PHASES 1 & 2 will be received by the Parks and Recreation Department until 2:00 P.M. Wednesday November 21, 2012.**

2. Invitation to Bid, Page 1 of 2, (pdf page 11) paragraph 2: The description of the project is revised as follows:

**Construction of Emanuel Cleaver II Boulevard Streetscape Improvements - Phases 1 & 2, consisting of work between Rockhill Road and The Paseo, including concrete curbs and walks; curb inlets; asphalt milling, overlaying, cutting and patching; pavement marking & signage; streetlights & pedestrian lights; furnishings; landscaping, including curbside rain gardens, street trees and sod.**

3. Add: **Bus Shelter Drawings**, 8 pages, attached to Spec section 02880, page 325. Insert Drawings after page 329.

4. Replace: Specification 05010 - Manhole Construction Castings with **Specification 05010 - Manhole Construction Castings (Rev. 11-12)**

6. Replace: 00412.1 Unit Prices, Phase 1 with New 00412.1 Unit Prices

7. Replace: 00412.2 Unit Prices, Phase 2 with New 00412.2 Unit Prices

8. Replace: 00420 Alternates with new 00420 Alternates

9. Replace: 01230 Alternate spec with new 01230 Alternate spec

---

### **CERTIFICATE BY BIDDER/PROPOSER**

I acknowledge receipt of this Addendum No. 1 for Project No. **STP-3387(406)**

**EMANUEL CLEAVER II BOULEVARD STREETScape IMPROVEMENTS PHASES 1 & 2** and that the bid/proposal is in accordance with the information, instructions, and stipulations set forth herein.

By \_\_\_\_\_

Company \_\_\_\_\_

➔ Note: This signed addendum notice must accompany your bid.



## INVITATION TO BID

Project Number: G70091307

Federal Project Number: STP-3387(406)

Project Title: Emanuel Cleaver II Boulevard Streetscape Improvements - Phases 1 & 2 REVISED 11-8-12

The Parks & Recreation Department of Kansas City, Missouri will receive sealed Bids until **November 14, 2012 at 4600 E. 63rd Street, Kansas City, Missouri 64130** for:

### Federal Project STP-3387(406)

**Construction of Emanuel Cleaver II Boulevard Streetscape Improvements - Phases 1 & 2, consisting of work between Rockhill Road and The Paseo, including concrete curbs and walks; curb inlets; asphalt milling, overlaying, cutting and patching; pavement marking & signage; streetlights & pedestrian lights; furnishings; landscaping, including curbside rain gardens, street trees and sod.**

Bids will be opened after that time at Kansas City, MO Parks & Recreation Department Board conference room.

Note: This contract requires bidders to bid on additional contract work that will be considered for award. The city will award the project based upon the lowest, responsive, responsible combined base bid for Phase 1 and Phase 2 plus alternates based up the city's published budget and priorities. Please see Section 01230 for additional information on the alternative bidding process.

Bidding Documents will be available online to all interested parties at the Kansas City, Missouri Plan Room, <http://www.kcmoplanroom.org>. All addenda will be posted at this location. Any document or plan may be viewed or downloaded from this location.

Bidders are required to attend the **mandatory Pre-Bid Conference** on November 7, 2012 at 2:00 p.m. in the Planning Services Conference Room, 4600 E. 63rd Street, Kansas City, Missouri 64130.

This project is funded in part with funds offered by the Missouri Department of Transportation (MoDOT). This project will be awarded to the lowest, responsive, responsible bidder.

The City of Kansas City, Missouri hereby notifies all bidders that it will affirmatively ensure that in any contract entered into pursuant to this advertisement, disadvantaged business enterprises will be afforded full opportunity to submit bids in response to this invitation and will not be discriminated against on the grounds of race, color, or national origin in consideration for an award.

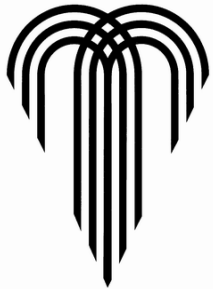
Project Manager: Jocelyn Ball-Edson  
Phone Number: (816)513-7626  
Fax Number: (816)513-7602  
E-mail: [Jocelyn.ball-edson@kcmo.org](mailto:Jocelyn.ball-edson@kcmo.org)

Contract Administrator: Patt Losiewicz  
Phone Number: (816) 513-7632  
Fax Number: (816) 513-7605  
E-mail: [patt.losiewicz@kcmo.org](mailto:patt.losiewicz@kcmo.org)

View all procurement and contracting opportunities at <http://www.kcmo.org>.

Bidder: \_\_\_\_\_

CITY OF FOUNTAINS  
HEART OF THE NATION



KANSAS CITY  
MISSOURI

## UNIT PRICES

Project Number : **G70091307**

Federal Project Number: **STP-3387(406)**

Project Title: **EMANUEL CLEAVER II BOULEVARD STREETScape IMPROVEMENTS  
PHASE 1 REVISED 11-8-12**

**NOTE: IN THE EVENT OF DISCREPANCY, UNIT PRICE SHALL GOVERN.**

| Item No.                       | Unit | Quantity | Item Description:                                          | Unit | Extension   |
|--------------------------------|------|----------|------------------------------------------------------------|------|-------------|
| <b>PREPARATION WORK</b>        |      |          |                                                            |      |             |
| <b>MOBILIZATION, SURVEYING</b> |      |          |                                                            |      |             |
| 100                            | L.S. | 1        | Mobilization                                               |      | 0.00        |
| 101                            | L.S. | 1        | Surveying and Construction Staking                         |      | 0.00        |
|                                |      |          | <b>Mobilization, Surveying Subtotal</b>                    |      | <b>0.00</b> |
| <b>DEMOLITION</b>              |      |          |                                                            |      |             |
| 102                            | S.Y. | 1,464    | Demolition & Removal of existing Pavement/Driveway         |      | 0.00        |
| 103                            | S.Y. | 78       | Demolition & Removal of existing Private Pavement/Driveway |      | 0.00        |
| 104                            | S.Y. | 1,471    | Demolition & Removal of existing Sidewalks                 |      | 0.00        |
| 105                            | L.F. | 2,632    | Demolition & Removal of existing Curbs                     |      | 0.00        |
| 106                            | L.F. | 3,407    | Saw Cut Existing Pavement                                  |      | 0.00        |
| 107                            | EACH | 1        | Demolition & Removal of existing Tree                      |      | 0.00        |
| 108                            | EACH | 11       | Removal of existing Light Poles                            |      | 0.00        |
| 109                            | EACH | 16       | Removal of existing Street Signs                           |      | 0.00        |
| 110                            | EACH | 1        | Relocate existing Fire Hydrant                             |      | 0.00        |
|                                |      |          | <b>Demolition Subtotal</b>                                 |      | <b>0.00</b> |
| <b>EROSION CONTROL</b>         |      |          |                                                            |      |             |
| 111                            | EACH | 14       | Gravel Curb Inlet Sediment Trap                            |      | 0.00        |
|                                |      |          | <b>Erosion Control Subtotal</b>                            |      | <b>0.00</b> |
| <b>UTILITIES</b>               |      |          |                                                            |      |             |
| 112                            | EACH | 20       | Manhole /Other Utility Adjustment                          |      | 0.00        |
| 113                            | EACH | 5        | Connect to Existing Manhole                                |      | 0.00        |
| 114                            | EACH | 2        | Connect Storm Sewer Pipe to Existing                       |      | 0.00        |

Bidder: \_\_\_\_\_

|                                       |      |        |                                                   |                                 |             |
|---------------------------------------|------|--------|---------------------------------------------------|---------------------------------|-------------|
| 115                                   | EACH | 3      | 5'x4' Non-Setback Curb Inlet Type CI-2            |                                 | 0.00        |
| 116                                   | EACH | 8      | 5'x3' Non-Setback Curb Inlet Type CI-2            |                                 | 0.00        |
| 117                                   | L.F. | 22     | 15" RCP Class III                                 |                                 | 0.00        |
| 118                                   | L.F. | 190    | 24" RCP Class III                                 |                                 | 0.00        |
| 119                                   | L.F. | 51     | 12" PVC SDR-26                                    |                                 | 0.00        |
| 120                                   | EACH | 2      | 12" Drain Inlet                                   |                                 | 0.00        |
| 121                                   | L.F. | 27     | 4" Perforated PVC SDR-35                          |                                 | 0.00        |
| 122                                   | EACH | 2      | Cleanout                                          |                                 | 0.00        |
|                                       |      |        |                                                   | <b>Utilities Subtotal</b>       | <b>0.00</b> |
| <b>ROADWAY</b>                        |      |        |                                                   |                                 |             |
| 123                                   | S.Y. | 366    | Full Depth Pavement Repair                        |                                 | 0.00        |
| 124                                   | L.F. | 2,596  | Concrete Curb and Gutter (CG-1)                   |                                 | 0.00        |
| 125                                   | L.F. | 314    | Concrete Curb and Gutter (C-1)                    |                                 | 0.00        |
| 126                                   | S.F  | 14,399 | PCC Sidewalks                                     |                                 | 0.00        |
| 127                                   | S.F. | 21     | PCC Stair at NW corner of Troost                  |                                 | 0.00        |
| 128                                   | L.F. | 28     | PCC Transition Step at NW corner of Troost        |                                 | 0.00        |
| 129                                   | S.F  | 1,657  | PCC Curb Ramps                                    |                                 | 0.00        |
| 130                                   | S.F  | 2,622  | PCC Driveway                                      |                                 | 0.00        |
| 131                                   | S.F. | 706    | PCC Private Driveway                              |                                 | 0.00        |
| 132                                   | S.F  | 364    | ADAAG Compliant Tactile Pavers @ Crossings        |                                 | 0.00        |
| 133                                   | S.Y. | 20,300 | 2 Inch Depth Cold mill and Overlay                |                                 | 0.00        |
|                                       |      |        |                                                   | <b>Roadway Subtotal</b>         | <b>0.00</b> |
| <b>SIGN/STRIPE/SIGNAL/LIGHTING</b>    |      |        |                                                   |                                 |             |
| <b>TRAFFIC CONTROL</b>                |      |        |                                                   |                                 |             |
| 134                                   | EACH | 11     | Temporary Sign: W20-1                             |                                 | 0.00        |
| 135                                   | EACH | 11     | Temporary Sign: G20-2                             |                                 | 0.00        |
| 136                                   | EACH | 2      | Temporary Sign: W9-2                              |                                 | 0.00        |
| 137                                   | EACH | 2      | Temporary Sign: R3-7                              |                                 | 0.00        |
| 138                                   | EACH | 2      | Temporary Sign: ARROW BOARD- 48"X24"              |                                 | 0.00        |
| 139                                   | EACH | 60     | Temporary Sign: CHANNELIZATION DEVICES            |                                 | 0.00        |
|                                       |      |        |                                                   | <b>Traffic Control Subtotal</b> | <b>0.00</b> |
| <b>PAVEMENT MARKING &amp; SIGNAGE</b> |      |        |                                                   |                                 |             |
| 140                                   | EACH | 13     | Pavement Marking-Thermoplastic Directional Arrows |                                 | 0.00        |

Bidder: \_\_\_\_\_

|                                                |      |       |                                                              |  |             |
|------------------------------------------------|------|-------|--------------------------------------------------------------|--|-------------|
| 141                                            | L.F. | 2,693 | Pavement Marking- 6" wide-Single White Thermoplastic         |  | 0.00        |
| 142                                            | L.F. | 186   | Pavement Marking- 6" wide-Broken White Thermoplastic         |  | 0.00        |
| 143                                            | L.F. | 2,457 | Pavement Marking- 4" wide-Double Yellow Thermoplastic        |  | 0.00        |
| 144                                            | L.F. | 1,220 | Pavement Marking- 4" wide-Single White Broken Thermoplastic  |  | 0.00        |
| 145                                            | L.F. | 872   | Pavement Marking- 24" wide White Thermoplastic Crosswalk Bar |  | 0.00        |
| 146                                            | EACH | 15    | Pavement Marking- Bicyclist and Arrow                        |  | 0.00        |
| 147                                            | EACH | 8     | Signage- R3-17 Bike Lane sign                                |  | 0.00        |
| 148                                            | EACH | 2     | Signage- R3-17 Bike Lane Sign with R3-17B                    |  | 0.00        |
| 149                                            | EACH | 6     | Signage - R7-1 "No Parking"                                  |  | 0.00        |
| 150                                            | EACH | 2     | Signage - R7-203 "EMERGENCY SNOW ROUTE"                      |  | 0.00        |
| 151                                            | EACH | 2     | Signage - Relocate Existing Plaza District Sign              |  | 0.00        |
| 152                                            | EACH | 6     | Signage - R1-1 "Stop" sign                                   |  | 0.00        |
| 153                                            | EACH | 6     | Signage - "Cleaver II Blvd." Street Name sign                |  | 0.00        |
| 154                                            | EACH | 2     | Signage - "Holmes St." Street Name sign                      |  | 0.00        |
| 155                                            | EACH | 1     | Signage - "Charlotte St." Street Name sign                   |  | 0.00        |
| 156                                            | EACH | 2     | Signage - "Campbell St." Street Name sign                    |  | 0.00        |
| 157                                            | EACH | 1     | Signage - "Harrison St." Street Name sign                    |  | 0.00        |
| 158                                            | EACH | 4     | Signage - Metro Sign and Plaque                              |  | 0.00        |
| 159                                            | EACH | 1     | Signage - R2-1 "SPEED LIMIT 30"                              |  | 0.00        |
| 160                                            | EACH | 1     | Signage - R5-1 "DO NOT ENTER"                                |  | 0.00        |
| 161                                            | EACH | 1     | Signage - R3-2 "NO LEFT TURN"                                |  | 0.00        |
| 162                                            | EACH | 28    | SIGN POLE (SQUARE CHANNEL & BREAKAWAY)                       |  | 0.00        |
| <b>Pavement Marking &amp; Signing Subtotal</b> |      |       |                                                              |  | <b>0.00</b> |

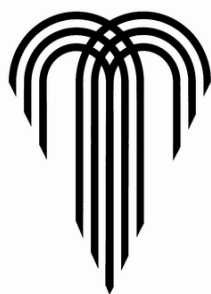
**ELECTRICAL**

|     |      |       |                                                            |  |      |
|-----|------|-------|------------------------------------------------------------|--|------|
| 163 | EACH | 2     | Circuit Lighting Controller (30A breaker)                  |  | 0.00 |
| 164 | EACH | 6,059 | Trenching and Backfill                                     |  | 0.00 |
| 165 | EACH | 13    | Fixture with 35 foot pole and helix base                   |  | 0.00 |
| 166 | EACH | 20    | LED Pedestrian Fixture with 14 foot pole and screw in base |  | 0.00 |
| 167 | EACH | 33    | Fused Connector Kits                                       |  | 0.00 |
| 168 | L.F. | 15    | In-grade junction box                                      |  | 0.00 |
| 169 | L.F. | 6,059 | 2" C PVC Schedule 40                                       |  | 0.00 |
| 170 | L.F. | 5,668 | #4 RHM/RHW/USE Copper                                      |  | 0.00 |
| 171 | L.F. | 2,834 | #6 Ground                                                  |  | 0.00 |

Bidder: \_\_\_\_\_

|                                  |      |       |                                                |                                           |             |
|----------------------------------|------|-------|------------------------------------------------|-------------------------------------------|-------------|
| 172                              | L.F. | 5,980 | #8 RHM/RHW/USE Copper                          |                                           | 0.00        |
| 173                              | L.F. | 2,990 | #8 Ground                                      |                                           | 0.00        |
| 174                              | L.F. | 2,205 | #10 RHM/RHW/USE Copper                         |                                           | 0.00        |
|                                  |      |       |                                                | <b>Electrical Subtotal</b>                | <b>0.00</b> |
| <b>LANDSCAPING/STREETSCAPING</b> |      |       |                                                |                                           |             |
| 175                              | EACH | 2     | Storm Planter Excavation/Proposed Eng. Soil    |                                           | 0.00        |
| 176                              | S.Y. | 622   | Turf sod                                       |                                           | 0.00        |
| 177                              | EACH | 2     | Trees                                          |                                           | 0.00        |
| 178                              | EACH | 16    | Shrubs                                         |                                           | 0.00        |
| 179                              | EACH | 2     | Storm Planter Inlet and Forebay (Each Set)     |                                           | 0.00        |
| 180                              | L.F. | 80    | Storm Planter Railing                          |                                           | 0.00        |
| 181                              | L.F. | 28    | Ornamental Railing                             |                                           | 0.00        |
| 182                              | L.F. | 8     | Stair Handrails                                |                                           | 0.00        |
| 183                              | L.F. | 80    | Storm Planter Wall                             |                                           | 0.00        |
| 184                              | EACH | 1     | Trash Receptacles                              |                                           | 0.00        |
| 185                              | EACH | 44    | Installed Street Name Tiles (each street name) |                                           | 0.00        |
| 186                              | SF   | 800   | Repairs to existing stone wall                 |                                           | 0.00        |
|                                  |      |       |                                                | <b>Landscaping/Streetscaping Subtotal</b> | <b>0.00</b> |
|                                  |      |       |                                                | <b>PHASE 1 BASE BID TOTAL</b>             | <b>0.00</b> |

Note: May be printed, for manual fill-in, or filled in on electronic excel spreadsheet version.



## UNIT PRICES

Project Number : **G70091307**

Federal Project Number: **STP-3387(406)**

Project Title: **EMANUEL CLEAVER II BOULEVARD STREETScape IMPROVEMENTS  
PHASE 2 REVISED 11-8-12**

**NOTE: IN THE EVENT OF DISCREPANCY, UNIT PRICE SHALL GOVERN.**

| Item No.                       | Unit | Quantity | Item Description:                                                                                | Unit | Extension   |
|--------------------------------|------|----------|--------------------------------------------------------------------------------------------------|------|-------------|
| <b>PREPARATION WORK</b>        |      |          |                                                                                                  |      |             |
| <b>MOBILIZATION, SURVEYING</b> |      |          |                                                                                                  |      |             |
| 200                            | L.S. | 1        | Mobilization                                                                                     |      | 0.00        |
| 201                            | L.S. | 1        | Surveying and Construction Staking                                                               |      | 0.00        |
|                                |      |          | <b>Mobilization, Surveying Subtotal</b>                                                          |      | <b>0.00</b> |
| <b>DEMOLITION</b>              |      |          |                                                                                                  |      |             |
| 202                            | S.Y. | 3,319    | Demolition & Removal of existing Pavement/Driveway                                               |      | 0.00        |
| 203                            | S.Y. | 3,009    | Demolition & Removal of existing Sidewalks                                                       |      | 0.00        |
| 204                            | L.F. | 3,362    | Demolition & Removal of existing Curbs                                                           |      | 0.00        |
| 205                            | L.F. | 4,329    | Saw Cut Existing Pavement                                                                        |      | 0.00        |
| 206                            | EACH | 14       | Demolition & Removal of existing Trees                                                           |      | 0.00        |
| 207                            | SF   | 60       | Shrub Bed Removal                                                                                |      | 0.00        |
| 208                            | EACH | 24       | Removal of Existing Street Lights                                                                |      | 0.00        |
| 209                            | EACH | 6        | Removal of Existing Parking Lot Lights                                                           |      | 0.00        |
| 210                            | EACH | 4        | Removal of Existing Street Signs                                                                 |      | 0.00        |
| 211                            | EACH | 3        | Relocate Existing Fire Hydrant                                                                   |      | 0.00        |
| 212                            | EACH | 1        | Apple Market Sign Removal                                                                        |      | 0.00        |
| 213                            | LS   | 1        | Removal of existing pavement and bollards at the bus stop at the SW corner of Cleaver and Troost |      | 0.00        |
| 214                            | CY   | 150      | Flowable Fill to Restore Subgrade                                                                |      | 0.00        |
|                                |      |          | <b>Demolition Subtotal</b>                                                                       |      | <b>0.00</b> |
| <b>EROSION</b>                 |      |          |                                                                                                  |      |             |
| 215                            | EACH | 21       | Gravel Curb Inlet Sediment Trap                                                                  |      | 0.00        |
|                                |      |          | <b>Erosion Subtotal</b>                                                                          |      | <b>0.00</b> |



Bidder: \_\_\_\_\_

| <b>UTILITIES</b>                   |      |        |                                            |                           |             |
|------------------------------------|------|--------|--------------------------------------------|---------------------------|-------------|
| 216                                | EACH | 18     | Manhole /Other Utility Adjustment          |                           | 0.00        |
| 217                                | EACH | 5      | Connect to Existing Manhole                |                           | 0.00        |
| 218                                | EACH | 2      | Connect Storm Sewer to Existing Pipe       |                           | 0.00        |
| 219                                | EACH | 5      | 4'x4' Grate Inlet Type GI-1                |                           | 0.00        |
| 220                                | EACH | 2      | 5'x4' Setback Curb Inlet Type CI-1         |                           | 0.00        |
| 221                                | EACH | 3      | 5'x4' Non-Setback Curb Inlet Type CI-2     |                           | 0.00        |
| 222                                | L.F. | 200    | 15" RCP Class III                          |                           | 0.00        |
| 223                                | L.F. | 100    | 24" RCP Class III                          |                           | 0.00        |
| 224                                | L.F. | 238    | 12" PVC SDR-26                             |                           | 0.00        |
| 225                                | EACH | 9      | Cleanout                                   |                           | 0.00        |
| 226                                | EACH | 1      | Curb Inlet Extension T1                    |                           | 0.00        |
| 227                                | EACH | 1      | Curb Inlet Extension V1                    |                           | 0.00        |
| 228                                | EACH | 1      | Curb Inlet Extension R2                    |                           | 0.00        |
| 229                                | EACH | 1      | Curb Inlet Extension Q1                    |                           | 0.00        |
| 230                                | EACH | 1      | Curb Inlet Extension O1                    |                           | 0.00        |
|                                    |      |        |                                            | <b>Utilities Subtotal</b> | <b>0.00</b> |
| <b>ROADWAY</b>                     |      |        |                                            |                           |             |
| 231                                | S.Y. | 280    | Full Depth Pavement Repair                 |                           | 0.00        |
| 232                                | L.F. | 2,780  | Concrete Curb and Gutter (CG-1)            |                           | 0.00        |
| 233                                | L.F. | 381    | Concrete Curb and Gutter (C-1)             |                           | 0.00        |
| 234                                | S.F  | 18,189 | PCC Sidewalks                              |                           | 0.00        |
| 235                                | S.F  | 4,636  | PCC Curb Ramps                             |                           | 0.00        |
| 236                                | S.F  | 7,093  | PCC Driveway                               |                           | 0.00        |
| 237                                | S.F  | 4,636  | Colored Crosswalks                         |                           | 0.00        |
| 238                                | S.F  | 350    | ADAAG Compliant Tactile Pavers @ Crossings |                           | 0.00        |
| 239                                | S.Y. | 530    | 2" Cold Mill and Asphalt Overlay on Troost |                           | 0.00        |
|                                    |      |        |                                            | <b>Roadway Subtotal</b>   | <b>0.00</b> |
| <b>SIGN/STRIPE/SIGNAL/LIGHTING</b> |      |        |                                            |                           |             |
| <b>TRAFFIC CONTROL</b>             |      |        |                                            |                           |             |
| 240                                | EACH | 11     | Temporary Sign: W20-1                      |                           | 0.00        |
| 241                                | EACH | 11     | Temporary Sign: G20-2                      |                           | 0.00        |

Bidder: \_\_\_\_\_

|                                 |      |    |                                        |  |             |
|---------------------------------|------|----|----------------------------------------|--|-------------|
| 242                             | EACH | 2  | Temporary Sign: W9-2                   |  | 0.00        |
| 243                             | EACH | 2  | Temporary Sign: R3-7                   |  | 0.00        |
| 244                             | EACH | 2  | Temporary Sign: ARROW BOARD- 48"X24"   |  | 0.00        |
| 245                             | EACH | 50 | Temporary Sign: CHANNELIZATION DEVICES |  | 0.00        |
| <b>Traffic Control Subtotal</b> |      |    |                                        |  | <b>0.00</b> |

**PAVEMENT MARKING & SIGNING**

|                                                |      |       |                                                              |  |             |
|------------------------------------------------|------|-------|--------------------------------------------------------------|--|-------------|
| 246                                            | EACH | 5     | Pavement Marking-Thermoplastic Directional Arrows            |  | 0.00        |
| 247                                            | L.F. | 1,837 | Pavement Marking- 6" wide-Single White Thermoplastic         |  | 0.00        |
| 248                                            | L.F. | 595   | Pavement Marking- 6" wide-Broken White Thermoplastic         |  | 0.00        |
| 249                                            | L.F. | 864   | Pavement Marking- 4" wide-Double Yellow Thermoplastic        |  | 0.00        |
| 250                                            | L.F. | 385   | Pavement Marking- 24" wide White Thermoplastic Crosswalk Bar |  | 0.00        |
| 251                                            | EACH | 9     | Pavement Marking- Bicyclist and Arrow                        |  | 0.00        |
| 252                                            | EACH | 10    | Signage- R3-17 Bike Lane sign                                |  | 0.00        |
| 253                                            | EACH | 9     | Signage - R7-1 "No Parking"                                  |  | 0.00        |
| 254                                            | EACH | 3     | Signage - R7-203 "EMERGENCY SNOW ROUTE"                      |  | 0.00        |
| 255                                            | EACH | 6     | Signage - R1-1 "Stop" sign                                   |  | 0.00        |
| 256                                            | EACH | 5     | Signage - "Clever II Blvd." Street Name sign                 |  | 0.00        |
| 257                                            | EACH | 1     | Signage - "Forest Ave." Street Name sign                     |  | 0.00        |
| 258                                            | EACH | 2     | Signage - "Tracy Ave." Street Name sign                      |  | 0.00        |
| 259                                            | EACH | 2     | Signage - "Virginia Ave." Street Name sign                   |  | 0.00        |
| 260                                            | EACH | 2     | Signage - R2-1 "SPEED LIMIT 30"                              |  | 0.00        |
| 261                                            | EACH | 1     | Signage - R4-7 "KEEP RIGHT"                                  |  | 0.00        |
| 262                                            | EACH | 1     | Signage - TYPE 3 (OMI-3) OBJECT MARKER                       |  | 0.00        |
| 263                                            | EACH | 11    | SIGN POLE (SQUARE CHANNEL & BREAKAWAY)                       |  | 0.00        |
| <b>Pavement Marking &amp; Signing Subtotal</b> |      |       |                                                              |  | <b>0.00</b> |

**ELECTRICAL**

|     |      |       |                                                        |  |      |
|-----|------|-------|--------------------------------------------------------|--|------|
| 264 | EACH | 2     | Circuit Lighting Controller (30A breaker)              |  | 0.00 |
| 265 | EACH | 5,755 | Trenching and Backfill                                 |  | 0.00 |
| 266 | EACH | 14    | Fixture with 35 foot pole and helix base               |  | 0.00 |
| 267 | EACH | 26    | Pedestrian Fixture with 14 foot pole and screw in base |  | 0.00 |
| 268 | EACH | 82    | Fused Connector Kits                                   |  | 0.00 |
| 269 | L.F. | 14    | In-grade junction box                                  |  | 0.00 |

Bidder: \_\_\_\_\_

|                                  |      |       |                                              |  |             |
|----------------------------------|------|-------|----------------------------------------------|--|-------------|
| 270                              | L.F. | 5,755 | 2" C PVC Schedule 40                         |  | 0.00        |
| 271                              | L.F. | 5,522 | #4 RHM/RHW/USE Copper                        |  | 0.00        |
| 272                              | L.F. | 2,761 | #6 Ground                                    |  | 0.00        |
| 273                              | L.F. | 6,000 | #8 RHM/RHW/USE Copper                        |  | 0.00        |
| 274                              | L.F. | 3,000 | #8 Ground                                    |  | 0.00        |
| 275                              | L.F. | 2,864 | #10 RHM/RHW/USE Copper                       |  | 0.00        |
|                                  |      |       | <b>Electrical Subtotal</b>                   |  | <b>0.00</b> |
| <b>LANDSCAPING/STREETSCAPING</b> |      |       |                                              |  |             |
| 276                              | S.Y. | 2,738 | Turf sod                                     |  | 0.00        |
| 277                              | EACH | 38    | Shade Trees                                  |  | 0.00        |
| 278                              | EACH | 36    | Ornamental Trees                             |  | 0.00        |
| 279                              | EACH | 31    | Shrubs                                       |  | 0.00        |
| 280                              | L.F. | 94    | Ornamental Railing                           |  | 0.00        |
| 281                              | S.F  | 2,250 | PCC Driveway for Bus Stops (KCATA FUNDED)    |  | 0.00        |
| 282                              | EACH | 1     | Bus Shelter - 15 ft model (KCATA FUNDED)     |  | 0.00        |
| 283                              | EACH | 2     | Bus Shelter - 10 ft model (KCATA FUNDED)     |  | 0.00        |
| 284                              | EACH | 2     | Bus Shelter Bollards (KCATA FUNDED)          |  | 0.00        |
| 285                              | EACH | 4     | Bus Shelter Benches (KCATA FUNDED)           |  | 0.00        |
| 286                              | EACH | 3     | Bus Shelter Trash Receptacles (KCATA FUNDED) |  | 0.00        |
|                                  |      |       | <b>Landscaping/Streetscaping Subtotal</b>    |  | <b>0.00</b> |
|                                  |      |       | <b>PHASE 2 BASE BID TOTAL</b>                |  | <b>0.00</b> |



## ALTERNATES

Project Number : **G70091307**

Fed. Project Number : **STP-3387 (406)**

Project Title: **Emanuel Cleaver II Blvd. Streetscape Improvements - Phases 1 & 2**  
**REVISED NOVEMBER 8, 2012.**

**NOTE: IN THE EVENT OF DISCREPANCY, UNIT PRICE SHALL GOVERN.**

| Item No. | Unit            | Quantity | Item Description:                                                                                                                                                                                                                                           | Unit Cost | Extension |
|----------|-----------------|----------|-------------------------------------------------------------------------------------------------------------------------------------------------------------------------------------------------------------------------------------------------------------|-----------|-----------|
| 301      | S.F             | 1,998    | Bid Alternate No 1: Within Phase 2, provide all brick pavers shown within the sidewalk. All detectable warning pavers shall be included in the base bid.                                                                                                    |           | 0.00      |
| 302      | S.F             | 1,255    | Bid Alternate No 2: Within Phase 1, provide all brick pavers shown within the sidewalk. All detectable warning pavers shall be included in the base bid.                                                                                                    |           | 0.00      |
| 303      | EACH<br>PLANTER | 9        | Bid Alternate No 3: Within Phase 2, provide the storm planters shown, including all associated concrete, railings, engineered soils, drain inlets, plantings and piping to point of connection. The base bid for the storm planters shall include turf sod. |           | 0.00      |
| 304      | S.F             | 416      | Bid Alternate No 4 - In lieu of the crosswalk striping shown on the Phase 2 plans, provide a colored and stamped concrete at the intersection at Cleaver and Tracy similar to the Troost intersection, but on the west side of the intersection only.       |           | 0.00      |

**SECTION 01230 - ALTERNATES**

PART 1- GENERAL

1.1 SUMMARY

- A. Section Includes:
  - 1. Procedures.
  - 2. Changes to Contract Sum and Contract Time.
  - 3. Description of Alternates.

1.2 PROCEDURES

- A. Submit bids on Document 00420- Alternates, for each Alternate listed in this Section.
- B. Reference made to Project Manual Section numbers and Drawing sheet numbers in the description of Alternates in this Section shall be used as a guide only. Bidder shall be responsible for determining the Work affected by individual Alternates.
- C. Coordination: Coordinate related Work and modify or adjust affected adjacent Work as necessary to completely integrate the Work of each accepted Alternate into Project.
  - 1. Include as part of each Alternate, miscellaneous devices, accessory objects, and similar items incidental to or required for a complete installation whether or not indicated as part of Alternate.
- D. Execute accepted Alternates under the same conditions as other Work of the Contract.

1.3 CHANGES TO CONTRACT SUM AND CONTRACT TIME

- A. Alternate prices shall not increase by change in material prices, wage rates, or other escalatory factors.
  - 1. Alternate prices are all inclusive, including labor, material, supervision, tools, equipment, taxes, overhead, profit, and other things necessary for the completion of the Work associated with the Alternate.
- B. Accepted Alternates will be identified in the Owner-Contractor Agreement.
- C. Alternate prices shall be submitted under a condition of irrevocability for the entire Contract Time.
- D. No increase in contract time will be accepted for any or all the Alternates.

**EMANUEL CLEVER II BLVD. STREETScape IMPROVEMENTS**

**ADD ALTERNATES**

**1.0 Description.** This contract requires bidders to bid on additional contract work that will be considered for award. The award of this project does not guarantee work for all add alternate sections.

| Routes                                                                                                                                                                                                                                                                                           | Proposal Section Description |
|--------------------------------------------------------------------------------------------------------------------------------------------------------------------------------------------------------------------------------------------------------------------------------------------------|------------------------------|
| Emanuel Cleaver Blvd. Street Work and Landscaping Improvements Rockhill to Paseo                                                                                                                                                                                                                 | Phase 1 and Phase 2 Base Bid |
| Additional Brick Pavers Troost to Paseo (Phase 2) Within Phase 2, provide all brick pavers shown within the sidewalk. All detectable warning pavers shall be included in the base bid.                                                                                                           | Alternate 301                |
| Additional Brick Pavers (Phase 1) Rockhill to Troost Within Phase 1, provided all brick pavers shown with the sidewalk. All detectable warning pavers shall be included in the based bid.                                                                                                        | Alternate 302                |
| Storm Planters (Phase 2) – Troost to Paseo Within Phase 2, proved the storm planters shown, including all associated concrete, railings, engineered soils, drain inlets, plantings and piping to point of connection. The base bid for the storm planters shall include turf sod.                | Alternate 303                |
| Stamped Concrete Crosswalks (Phase 2) Troost to Paseo In lieu of the crosswalk striping shown on the Phase 2 plans, provide a colored and stamped concrete crosswalk at the intersection at Cleaver and Tracy similar to the Troost intersection, but on the west side of the intersection only. | Alternate 304                |

Note: See plans for a breakdown of all quantities for each add alternate section.

**2.0 Consideration of Bids.** The contractor shall submit a bid for each add alternate section. The City reserves the right to award, to the lowest responsible bidder, the combination of base plus add alternate sections that will allow the most work to be completed within the City’s budget as published in the TIP. If the City chooses to exercise this right, the award of add alternate sections will be selected in accordance with the following priorities:

1. Base 1 + Base 2 + Alternative 301 + Alternative 302 + Alternative 303 + Alternative 304
2. Base 1 + Base 2 + Alternative 301 + Alternative 302 + Alternative 303
3. Base 1 + Base 2 + Alternative 301 + Alternative 302
4. Base 1 + Base 2 + Alternative 301
5. Base 1 + Base 2

**2.1** The City reserves the right to award the combination of highest priority add alternate sections over the City’s budget as long as the low bidder does not change and the award of the combination of highest priority alternate sections does not exceed more than ten percent or \$250,000 of the City’s budget, whichever is less.

## EMANUEL CLEVER II BLVD. STREETScape IMPROVEMENTS

**2.2** The City's budget is the basis for award of add alternates but not the basis for award of the base section. The base section of the contract will be awarded or rejected in accordance with Sec 100.

**2.3** The awarded bidder will be notified, of the City's selection of the combination of add alternates..

**3.0 Bid Bond Requirements.** The contractor shall be required to obtain a bid bond for 5% of the total bid amount for the base bid and all add alternates. This bid bond will be considered applicable to the proposed work for any option.

**4.0 DBE Goal.** The DBE contract goal percentage specified in the Request for Bid applies to work completed for the base bid and all add alternates. The DBE contract goal percentage will be considered applicable to the proposed work for any add alternate section that is awarded.

**4.1** The bidder shall submit the completed "DBE Identification Submittal" information in accordance with the bid documents for the total DBE participation percentage for the base bid and all add alternates.

**4.2** If the contract is awarded for less than the maximum total of all add alternates, the awarded bidder shall submit a modified "DBE Identification Submittal" form for the proportionately reduced work with the executed contract documents after award. The modified "DBE Identification Submittal" form shall specify the DBE firm(s) to be used to meet the DBE participation percentage identified in the bid submittal for the proportionately reduced work of the awarded add alternates.

**4.2.1** With submittal of the modified "DBE Identification Submittal" form, the awarded bidder is not allowed to eliminate any DBE firm(s) previously identified to complete items of work for the awarded add alternates. The awarded bidder is only allowed to proportionately reduce the participation of previously identified DBE firm(s) on awarded add alternates or eliminate previously identified DBE firms for add alternates that were not awarded.

**4.2.2** The failure of the awarded bidder to submit the modified "DBE Identification Submittal", listing actual, committed DBE participation percentage equal to or greater than the DBE participation percentage specified in the bid for all add alternates, may result in the bid being declared non responsive and may result in forfeiture of the bid surety bond or bid guaranty from the bidder.

**5.0 Basis of Payment.** The accepted quantities of the chosen combination of base plus add alternate sections will be paid for by the contract unit bid price for item numbers found within the schedule of items for each section.

**END OF SECTION 01230**

## **DIVISION 5 - METALS**

### **SECTION 05010 – MANHOLE CONSTRUCTION CASTINGS**

#### **1 - SCOPE:**

- 1.1. This specification covers construction castings made of cast iron and ductile iron.
- 1.2. Submit shop drawings showing installation details.
- 1.3. Where there is a conflict between this specification and a written exception, such as a detailed purchase order, a purchase specification, or a product specification, the exception shall take precedence over this specification.
- 1.4. Casting to be installed on pipelines 24-inch and larger shall be 32-inch diameter castings.

#### **2. – MANUFACTURE:**

##### **2.1. UNPAVED/EASEMENT/GREENWAY Locations:**

1. Use 24” Ductile Iron Manhole Covers. Manhole covers shall say "SEWER" in the center, and shall also say “DANGER DO NOT ENTER.” Manhole Frames and covers shall be manufactured of all Ductile Iron components, at an ISO9000 certified foundry. Castings shall be third party certified 65-45-12 ductile iron and all related standards. Covers shall be hinged with drain and shall incorporate 90 degree blocking system to prevent accidental closure. The cover shall incorporate a spring bar locking system that automatically activates when closed. Cover must have ability to be secured to frame for theft protection. A CAM LOCK security bolt will be installed for all castings to be installed in unpaved/easement/greenway locations. Flange shall incorporate bedding slots and bolt holes. Casting shall be load rated at least 100,000 lbs. Reference: AASHTO H20 and ISO 1083.

OR

2. Fiber Reinforced Polymer Composite Casting manhole covers and frames. The manhole covers shall be 26” in diameter and shall say "SEWER" in the center and shall also say “DANGER DO NOT ENTER.” External wrap shall be used on all composite castings.
- ##### **2.2. PAVED City/Public Street Right-of-Way Locations:** All manhole castings installed in PAVED areas will be adjustable/self leveling. Manhole covers shall say "SEWER" in the center and shall also say “DANGER DO NOT ENTER.”
1. 24” or 25" Self-Level Manhole Frame and Cover with “T” Gasketed Cover; ductile iron casting; ISO9000 certified foundry of all Ductile Iron components. Castings shall be third party certified 65-45-12 ductile iron and all related standards. Covers shall be hinged with drain and incorporate 90 degree blocking system to prevent



accidental closure. Reference: AASHTO H20 and ISO 1083 or approved equal.

**NOTE: Cam Locks will not be allowed in PAVED areas. In PAVED areas the Contractor shall install NON-Cam Lock Castings.**

### **3 - CLASS OF GRAY CAST IRON:**

- 3.1 Castings conforming to this specification are produced from gray cast iron in accordance with ASTM A48 Class 35B unless otherwise specified. Castings are classified on the basis of the tensile strength of the iron in separately cast test bars. Gray cast irons are those in which free graphite is present in the form of flakes.

### **4 - APPLICABLE DOCUMENTS for CAST IRON:**

- 4.1. ASTM Standards: A438 Transverse Testing of Gray Cast Iron, A 48 Gray Cast Iron.
- 4.2. Federal Standard: Federal Standard No. 123 Marking for Domestic Shipment (Civilian Agencies).
- 4.3. Environmental Protection Agency and United States Department of Labor. Material Safety Data Sheet.
- 4.4. Federal Register: No. 29 CFR 1910.1200.
- 4.5. United States Customs Service: Customs Regulation Chapter 1, Part 134, Article 19 U.S.C. 1304.
- 4.6. American Association of State Highway and Transportation Officials: AASHTO H 20 Loading Specifications.

### **5 - TOLERANCES:**

- 5.1. Unless otherwise specified, the dimensions of all castings shall have a tolerance of  $\pm 1/16$  inch.

### **6 - SEATING SURFACES:**

- 6.1 Casting shall seat without rocking.

### **7- SPECIAL REQUIREMENTS:**

- 7.1. The castings shall meet special requirements as to hardness, chemical composition, dimensions, surface finish, and markings.

### **8 - WORKMANSHIP AND FINISH:**

8.1. The castings shall be free of injurious defects. Surfaces of the castings shall be free of fused-on sand and shall be smooth. Runners, risers, fins, and other cast-on pieces shall be removed. A draft angle of 2° to 5° will be accepted provided it does not interfere with the fit of the assembly. In other matters of workmanship and finish, the castings shall conform to any points agreed upon by the manufacturer and the purchaser.

**9 - SURFACE PREPARATION AND APPLICATION:**

9.1. After the castings are removed from the molds the sand shall be removed from the castings. Any burrs, spurs, mold seam flashes, or excessive roughness shall be removed. The castings are to be clean, dry, and free of any oil, release agent, grease, solvents, or loose material.

**10 - TESTS AND INSPECTIONS for CAST IRON:**

10.1 Scope:

- a. A tension test and transverse test on a specimen machined from a separately cast test bar are required for qualification under this specification.
- b. A chemical test and a hardness test on separately cast test bars are required.
- c. Requirements for chemical composition and hardness are as follows:

|              |                   |
|--------------|-------------------|
| Total Carbon | 2.8 - 4.0%        |
| Manganese    | 0.3 - 0.8%        |
| Phosphorus   | 0.05 - 0.25%      |
| Sulfur       | 0.05 - 0.15%      |
| Silicon      | 1.8 - 3.0%        |
| Chromium     | 0.05 - 0.2%       |
| Nickel       | 0.0 - 0.1%        |
| Hardness     | 200 - 240 Brinell |

- d. Transverse testing shall be in accordance with ASTM Standard A-438 for B Test Bars.

10.2. Responsibility for Tests and Inspections

- a. Unless otherwise specified on the purchase order, the manufacturer is responsible for the performance of all tests and inspection requirements as specified herein.
- b. Tensile, transverse, chemical, and hardness tests shall be performed by an independent testing laboratory acceptable to the Director of the Water Services Department.
- c. Certified test results from the independent laboratory are to be submitted in

triplicate to the Water Services Department, prior to delivery.

- d. The purchaser reserves the right to perform any of the inspection set forth in the specification where such inspections are deemed necessary to assure supplies and services conform to the prescribed requirements.

### 10.3. Tensile Requirements

- a. Test bars representing castings conforming to this specification shall have a tensile strength of 35,000 pounds per square inch.

### 10.4. Cast Test Bars for Tensile

- a. Test bars shall be separate castings poured from the same iron as the castings they represent, and shall have dimensions as shown in ASTM 48 Class 35B. Allowance may be made for reasonable pattern draft within the tolerances show in ASTM A48 Class 35B. Test bars B are all standard test bars in the form of simple cylinders.
- b. The test bars shall be cast in dried or baked molds made mainly of an aggregate of siliceous sand with appropriate binders. The average grain size of the sand shall approximate that of the sand in which the castings are poured. Molds for the test bars shall be approximately at room temperature when poured (See note). More than one test bar may be cast in a single mold, but each bar in the mold shall be surrounded by a thickness of sand which is not less than the diameter of the bar. A suitable design for a mold is shown in ASTM A 48.

Note: The intent of these provisions is to prohibit the casting of test bars in molds of metal, graphite, zircon, light-weight aggregates, or other materials which would affect significantly the tensile strength of the iron, to prohibit control of tensile strength of the test bars by manipulation of the grain size of the sand, and to prohibit the casting of test bars in molds preheated substantially above room temperature.

### 10.5. Correlation of Test Bar and Casting

- a. Test bars that are intended to represent castings shall be cooled in the mold to less than 900°F (480°C) before shakeout, shall be cooled in their molds to a temperature less than 900°F and then may be cooled in still air to room temperature.
- b. When castings are stress relieved, annealed, or otherwise heat treated, test bars shall receive the same thermal treatment and shall be treated adjacent to the castings they represent.

### 10.6. Tension Test Specimens

- a. For test bar B the tension test specimen B, as shown in ASTM A 48 Class 35B, shall be machined concentric with the axis of the test bar.

#### 10.7. Tension Test

- a. Tension-test specimens shall fit the holders of the testing machine in such a way that the load shall be axial.
- b. The elapsed time from the beginning of loading in the tension test to the instant of fracture shall be not less than 20 seconds for specimens B.

#### 10.8. Number of Tests and Retests

- a. The manufacturer shall cast and prepare at least two test bars for each test (Tensile, Transverse, Chemical) for each lot of casting intended to conform to this specification. Unless otherwise agreed between the manufacturer and the purchaser, the manufacturer shall make the specified tests. If any test specimen shows defective or improper machining or obvious lack of continuity of metal, it may be discarded and replaced by another specimen from another test bar from the same lot.
- b. If the test specimen fails to conform to this specification, one retest may be made on another specimen from another specimen from another test bar from the same lot. If the retest meets the specification, the castings shall be acceptable with respect to strength.

#### 10.9. Description of a Lot: Unless otherwise specified, the manufacturer may define a lot as any of the following:

- a. A group of castings weighing less than 2000 lb(910 kg) each when poured continuously within 2 hours from the same melt and from consecutive charges consisting of essentially the same percentages and types of materials.
- b. A group of castings weighing less than 2000 lb each when the total weight of the group does not exceed 8000 lb (3600 kg) and when all castings in the group are poured within 4 hours from the same melt and from consecutive charges consisting of essentially the same percentages and types of materials.

### **11 - PREPARATION FOR DELIVERY:**

11.1. Unless otherwise specified on the purchase order, cleaning, preservation, and packaging of castings shall be in accordance with the manufacturer's commercial practice. Packing and marking shall also be adequate to ensure acceptance and safe delivery by the carrier for the mode of transportation employed.

11.2. All castings shall be marked in accordance with the requirements of Federal Standard No. 123 and with Chapter 1, Part 134 of the United States Customs Service Regulations, including 19 U.S.C. 1304 paragraph, as applicable. Failure to conform to the above requirements will be just cause for rejection of castings.

**13 - SHOP DRAWINGS:**

- 13.1. Before manufacturing the casting, the Contractor shall submit five (5) sets of Certified shop drawings for approval to Water Services Department and one (1) set to Parks and Recreation.

**15 - RECORDS:**

- 15.1. The manufacturer shall keep records of all tests, MSDS sheets, foundry, lot records, product liability insurance, and customs documentation control data, as applicable, for a period of 3 years. The supplier agrees to furnish copies of records within two weeks after a receipt of request for such records.

**16 - DELIVERY AND ACCEPTANCE:**

- 16.1. Delivery shall be to the Water Services Department, Yard Store, 2409 East 18th Street, Kansas City, Missouri 64127.
- 16.2. If the number of the defective items exceeds two and one half percent of the lot, the purchaser will reject the remaining quantity in the lot and the supplier will redeliver the remaining quantity of the lot.
- 16.3. The manufacturer shall deliver the castings in accordance with the requirements stated on the Invitation to Bid.

**17 - AFFIDAVIT OF COMPLIANCE:**

- 17.1. The manufacturer SHALL send an affidavit certifying that the castings furnished under any PURCHASE ORDER comply with the provisions of these specifications whether or not the purchaser has an inspector at the plant.
- 17.2. The affidavit shall be sent to Water Services Department.

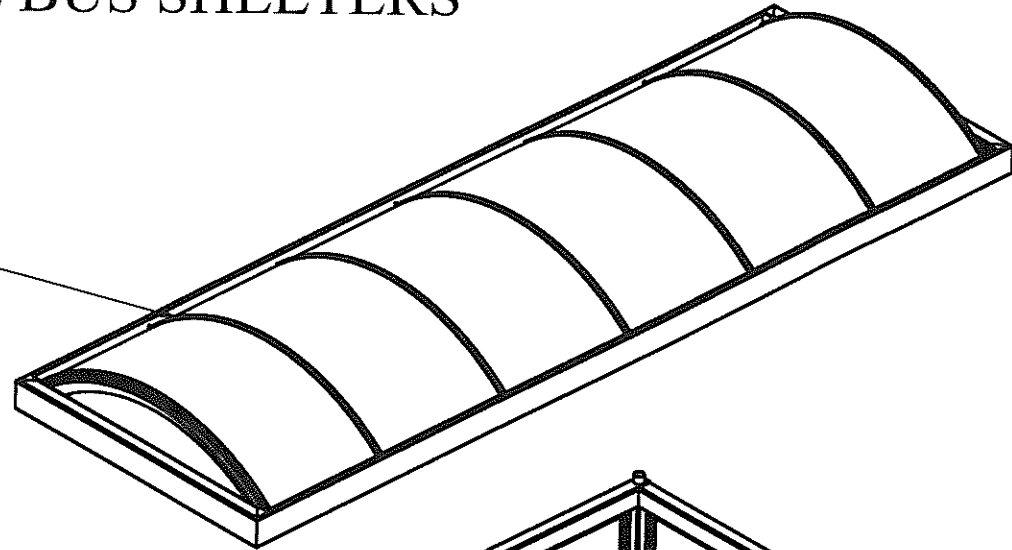
**18 - FINAL PAYMENT:**

- 18.1. Payment shall be made for all parts received which meet all of these specifications.

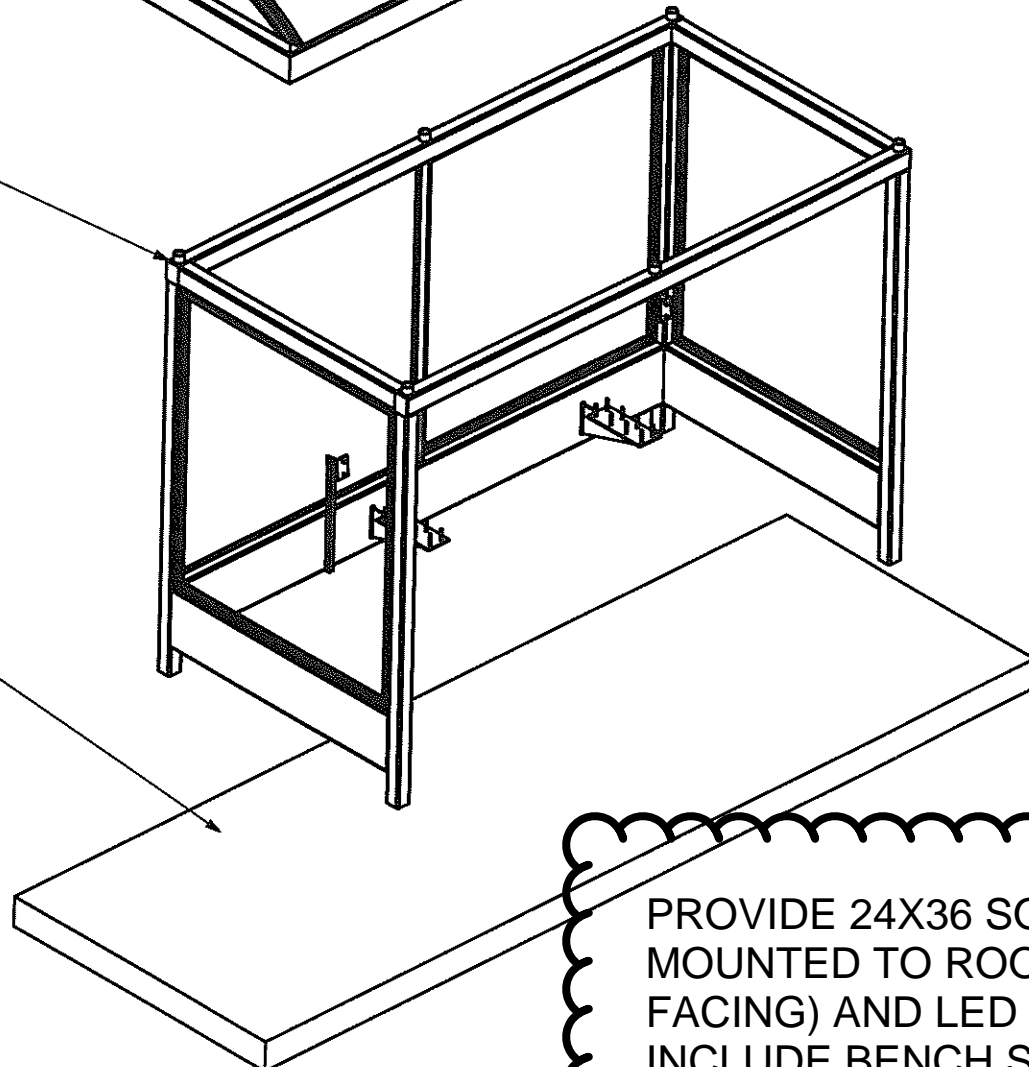
End of Section

# STANDARD LOCAL BUS SHELTERS

ROOF  
DRAWINGS R1-R3

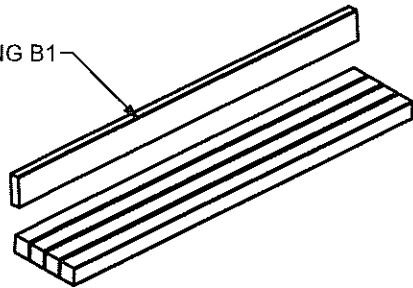


FRAME  
DRAWINGS F1-F4

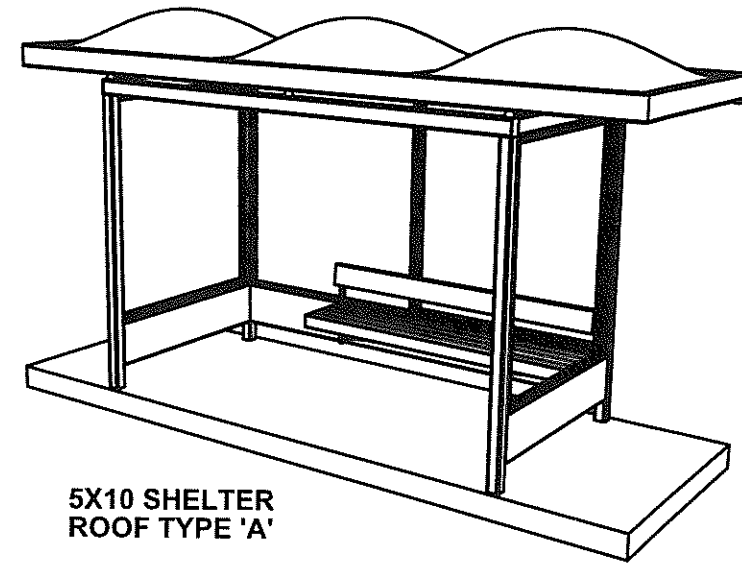


CONCRETE PAD FOOTING

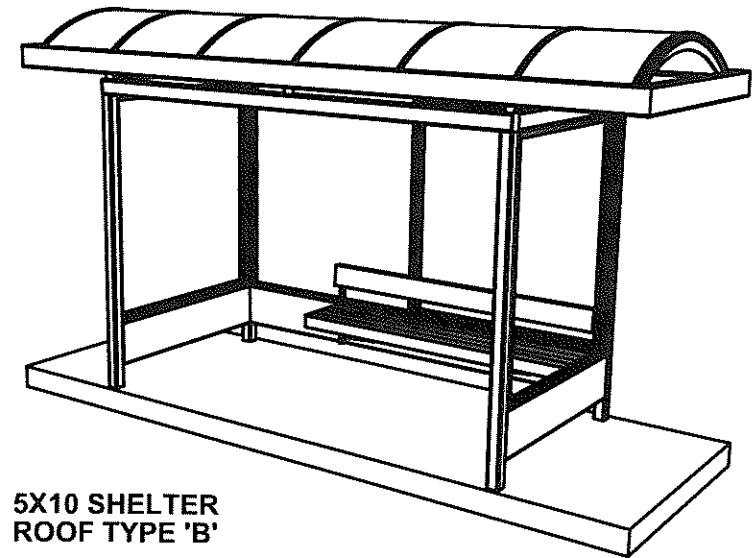
BENCH  
DRAWING B1



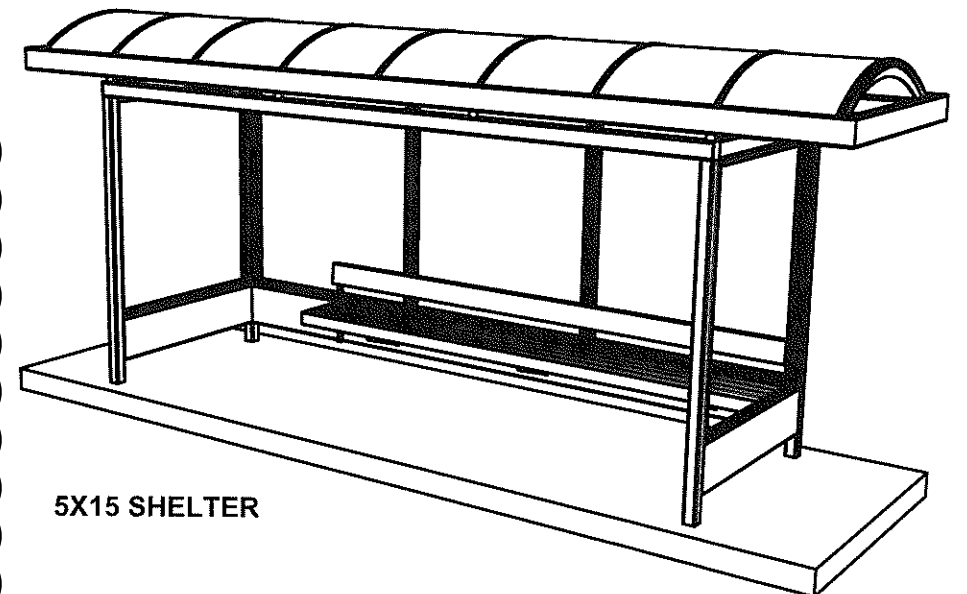
PROVIDE 24X36 SOLAR PANEL MOUNTED TO ROOF (SOUTH FACING) AND LED LIGHT. DO NOT INCLUDE BENCH SHOWN ON THE KCATA DRAWINGS. FURNISHINGS SHOWN ON L-SHEETS.



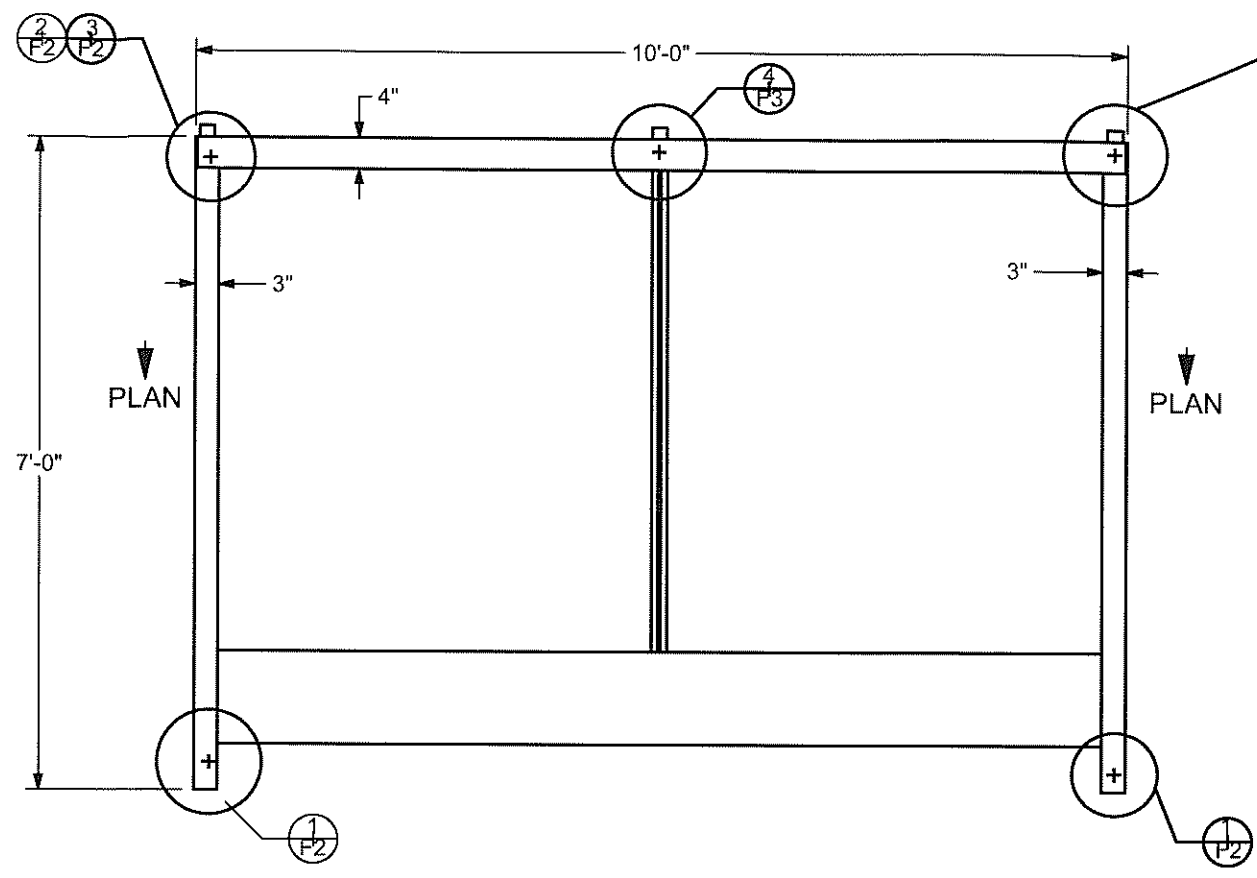
5X10 SHELTER  
ROOF TYPE 'A'



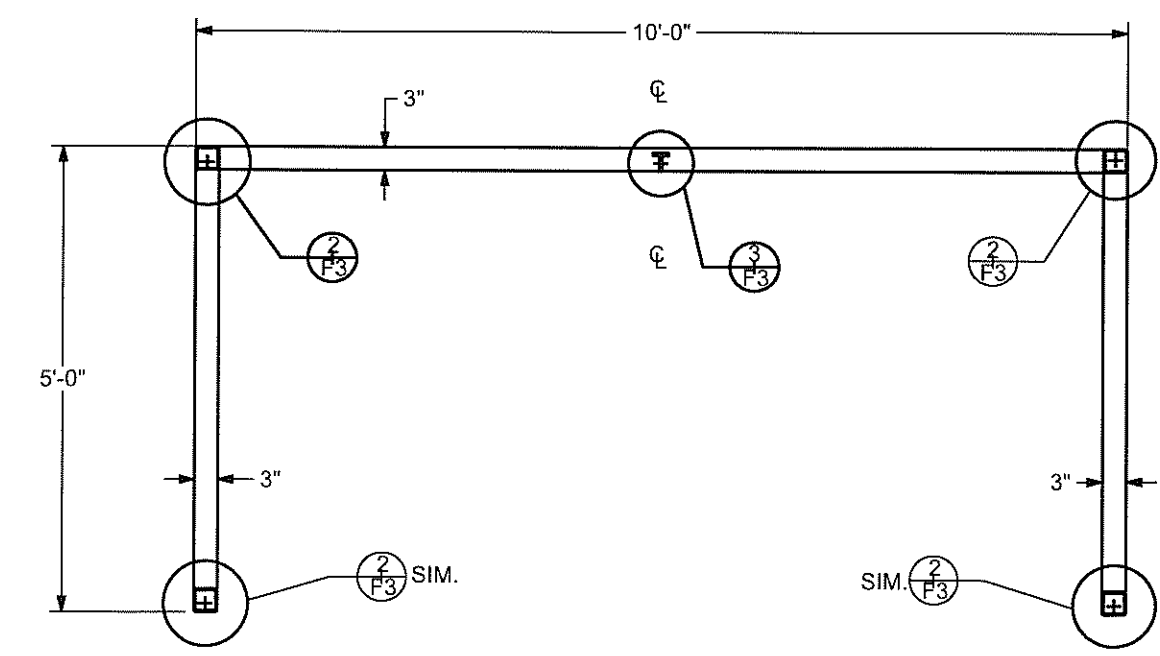
5X10 SHELTER  
ROOF TYPE 'B'



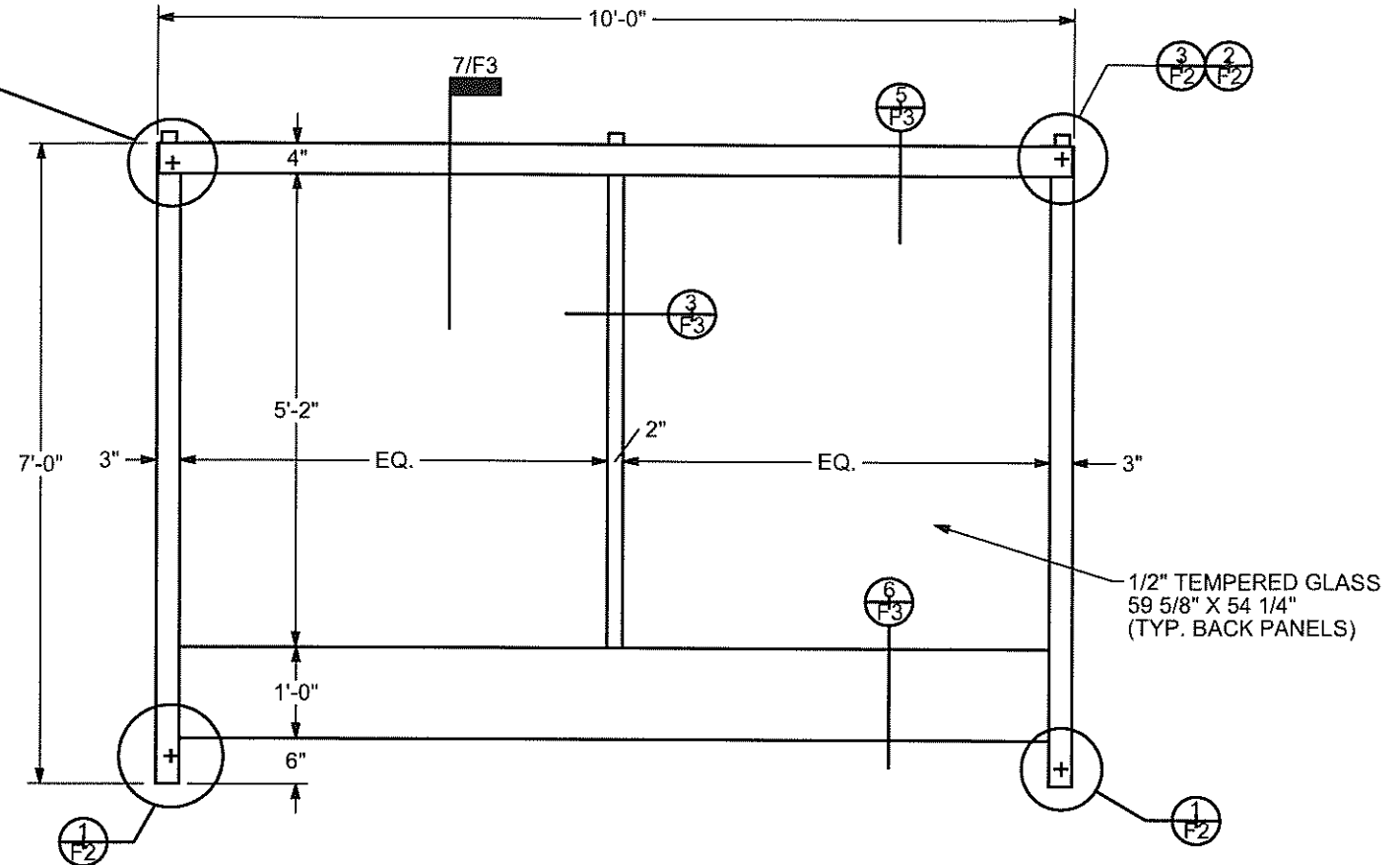
5X15 SHELTER



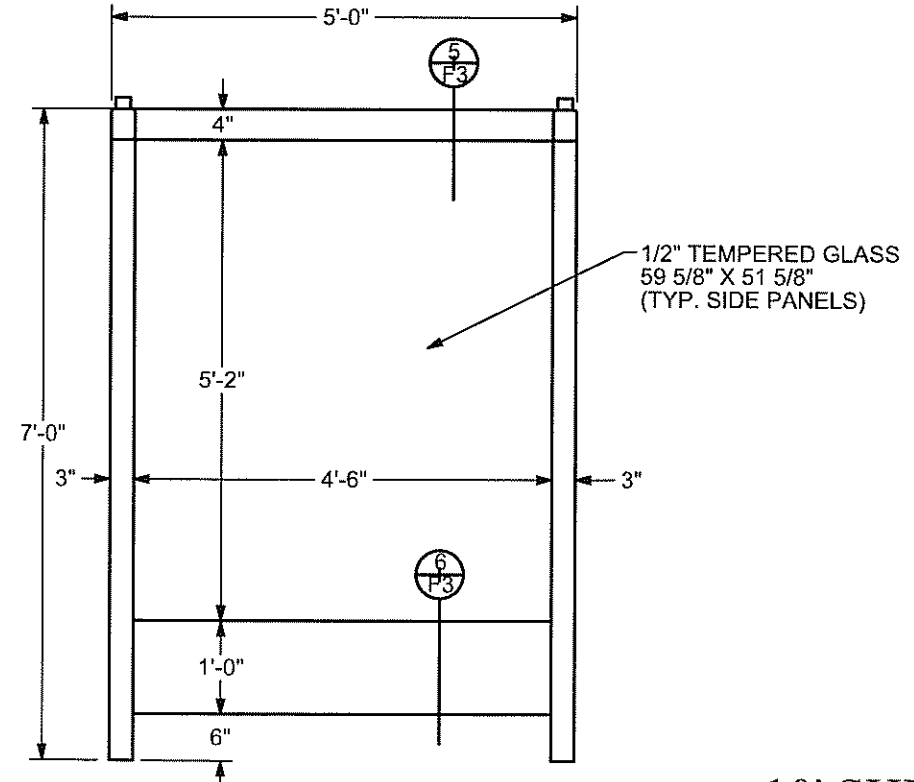
**FRONT ELEVATION**



**PLAN VIEW**

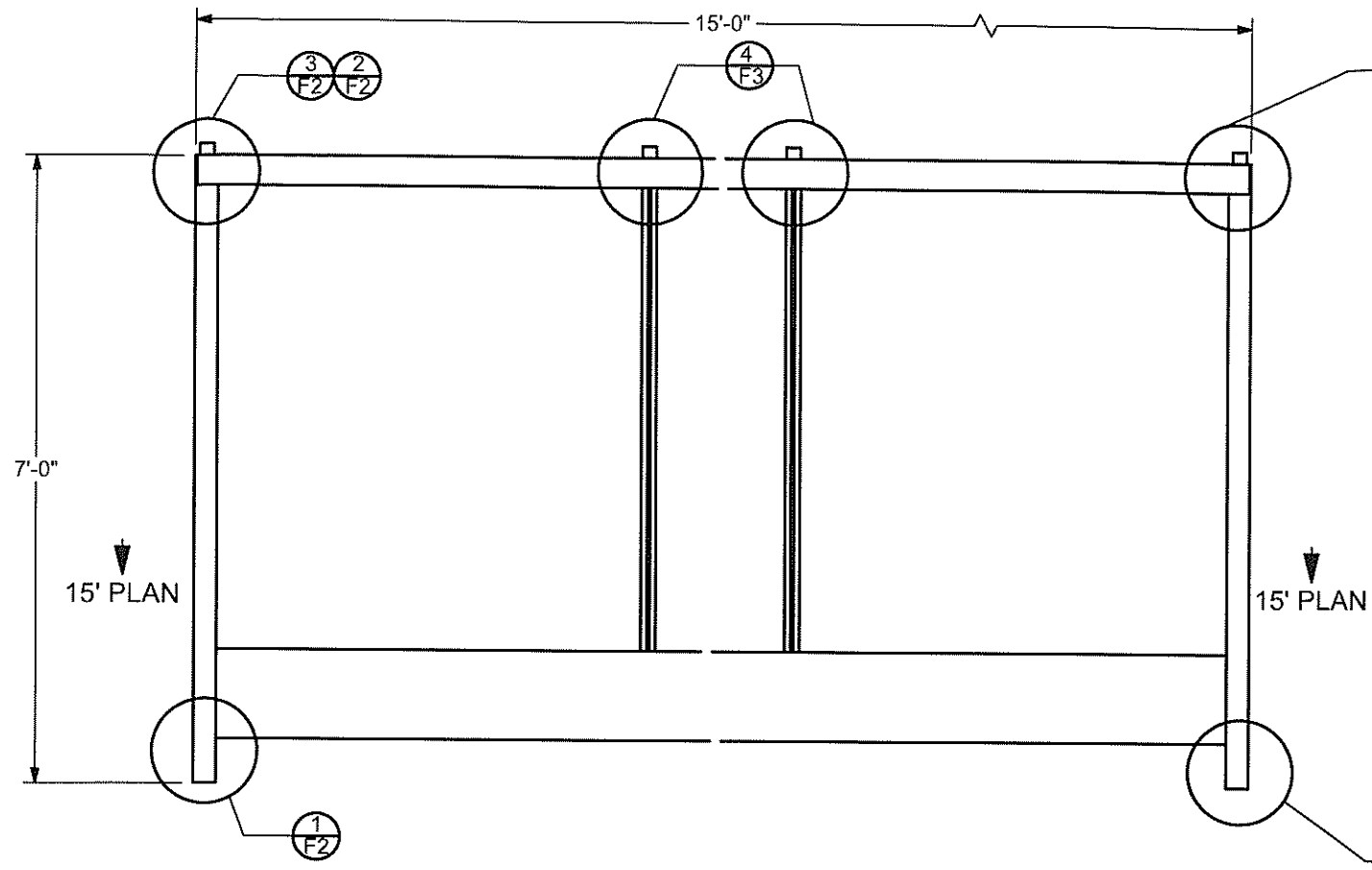


**REAR ELEVATION**

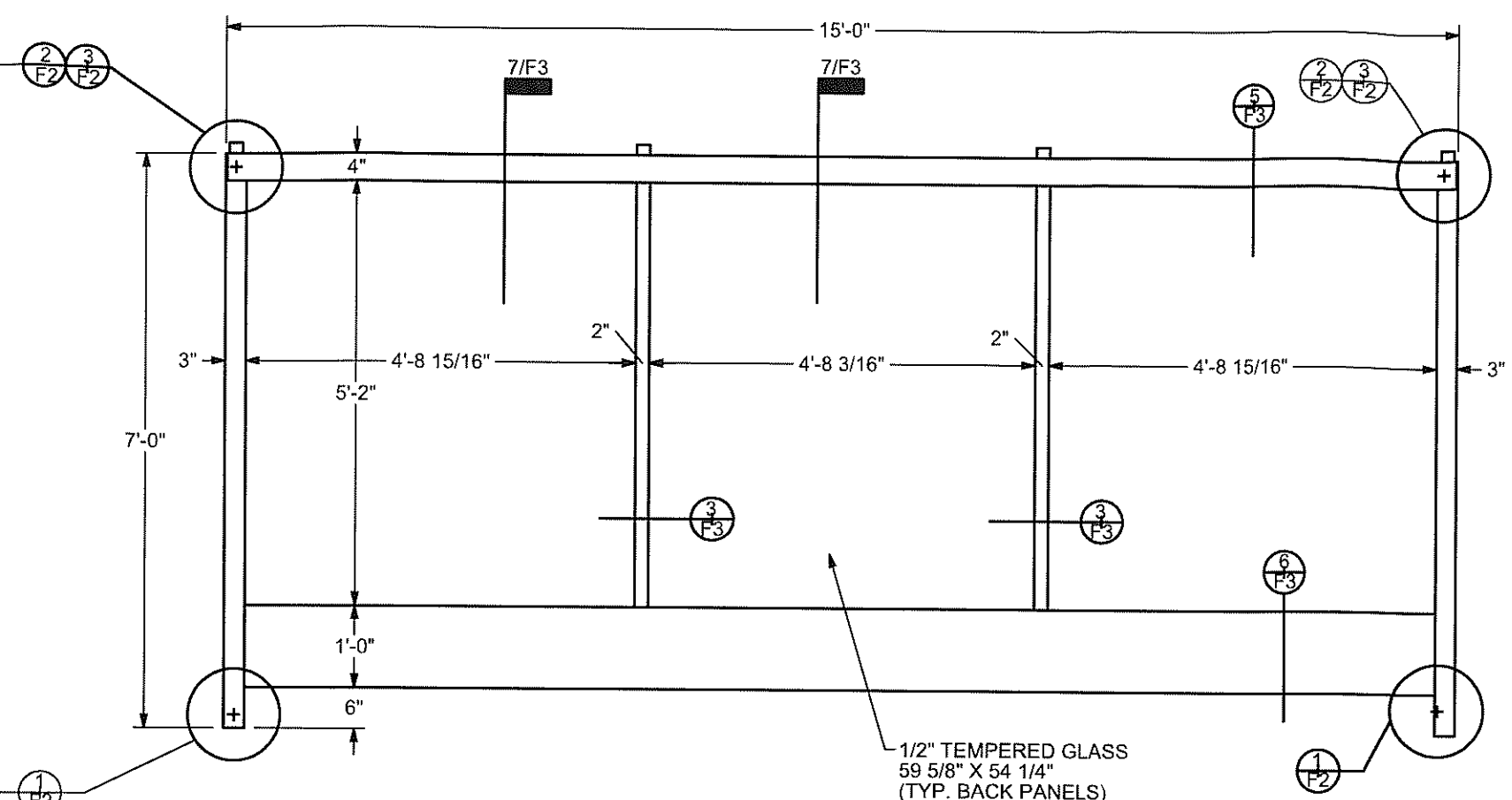


**SIDE ELEVATION**

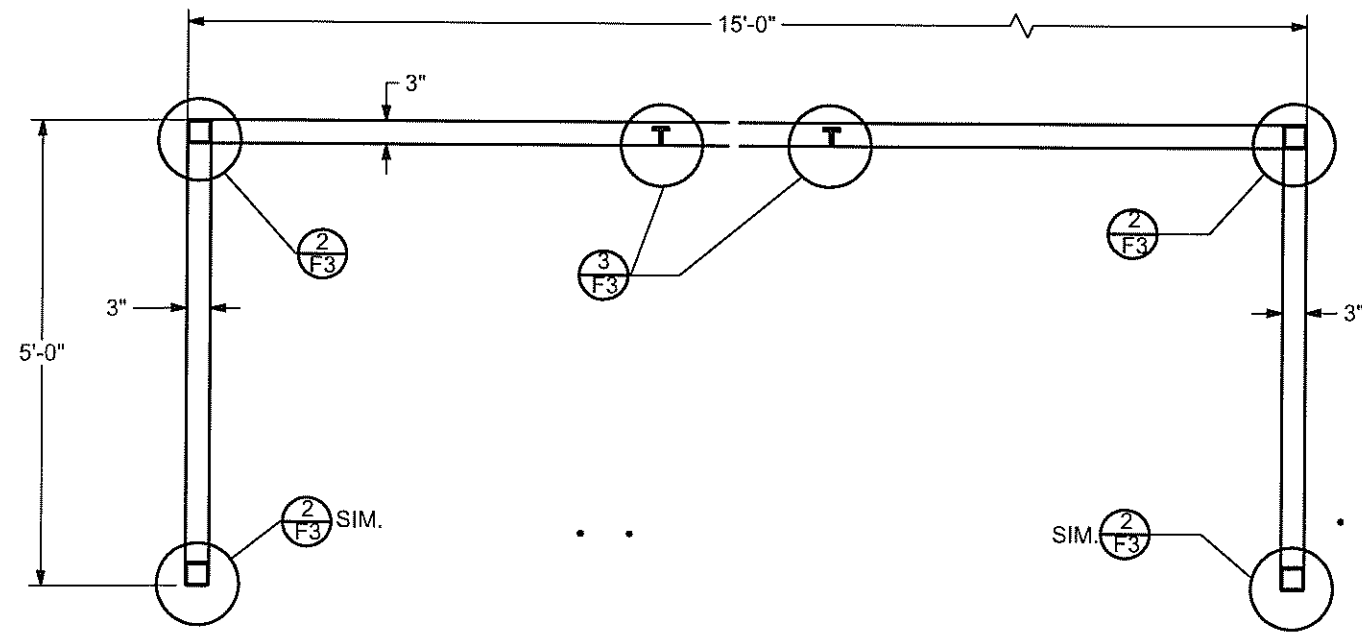
**10' SHELTER FRAME**  
**K.C.A.T.A.**  
**PUBLIC PASSENGER SHELTER PROGRAM**  
**SHEET F1**  
 02880-7



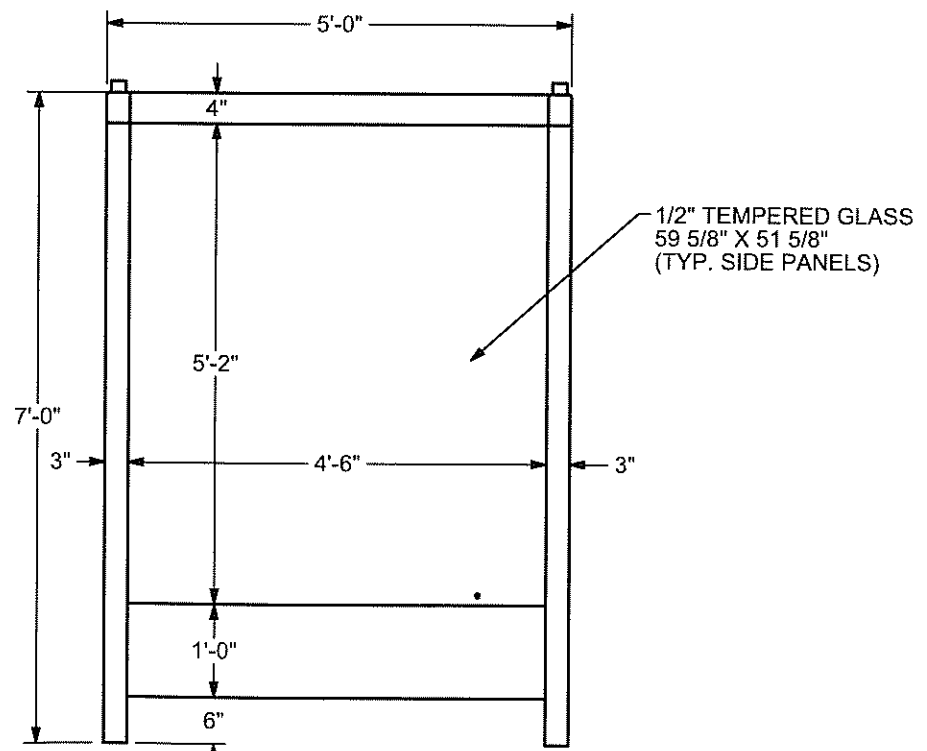
**FRONT ELEVATION**



**REAR ELEVATION**



**PLAN VIEW**



**SIDE ELEVATION**

1/2" TEMPERED GLASS  
59 5/8" X 54 1/4"  
(TYP. BACK PANELS)

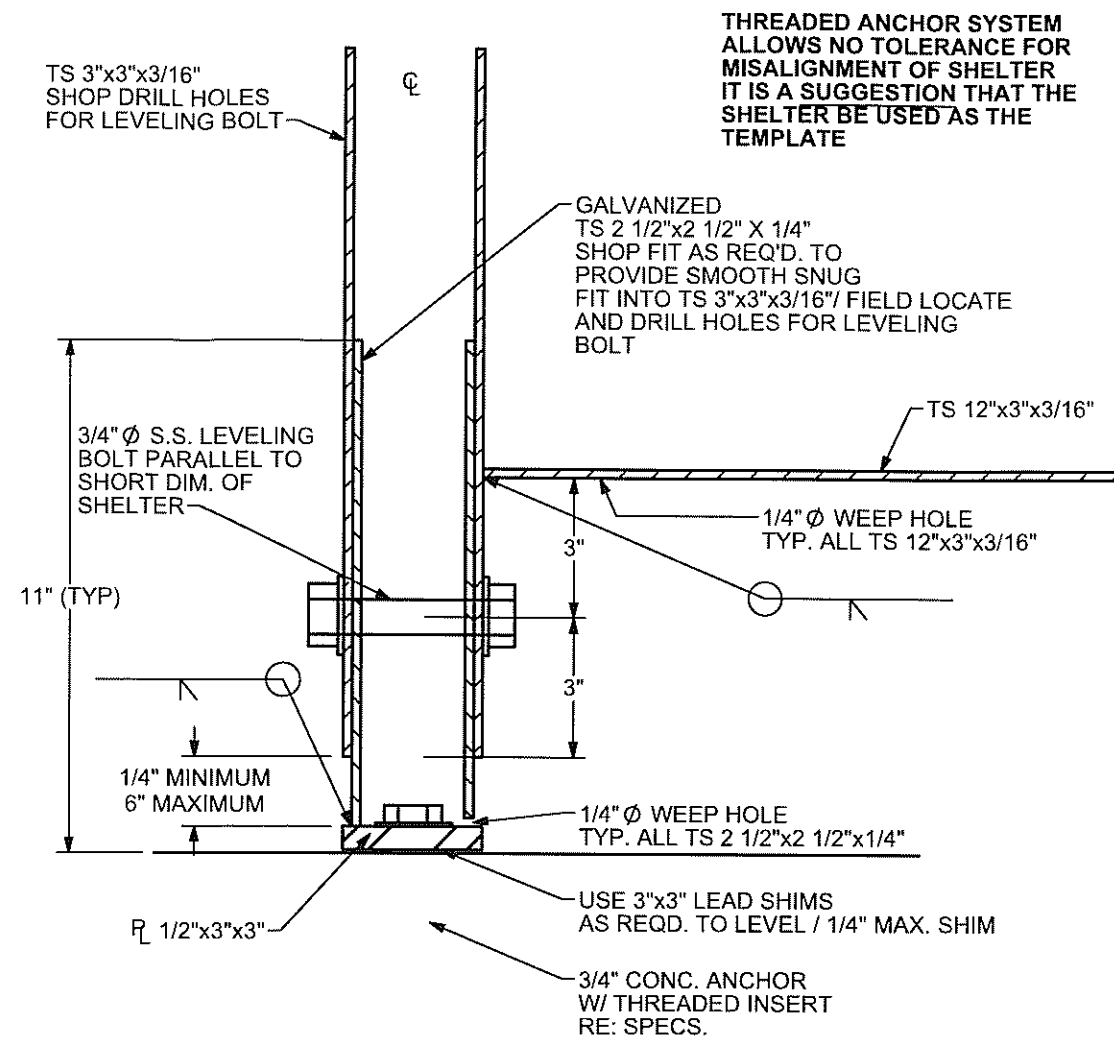
1/2" TEMPERED GLASS  
59 5/8" X 51 5/8"  
(TYP. SIDE PANELS)

**15' SHELTER FRAME**

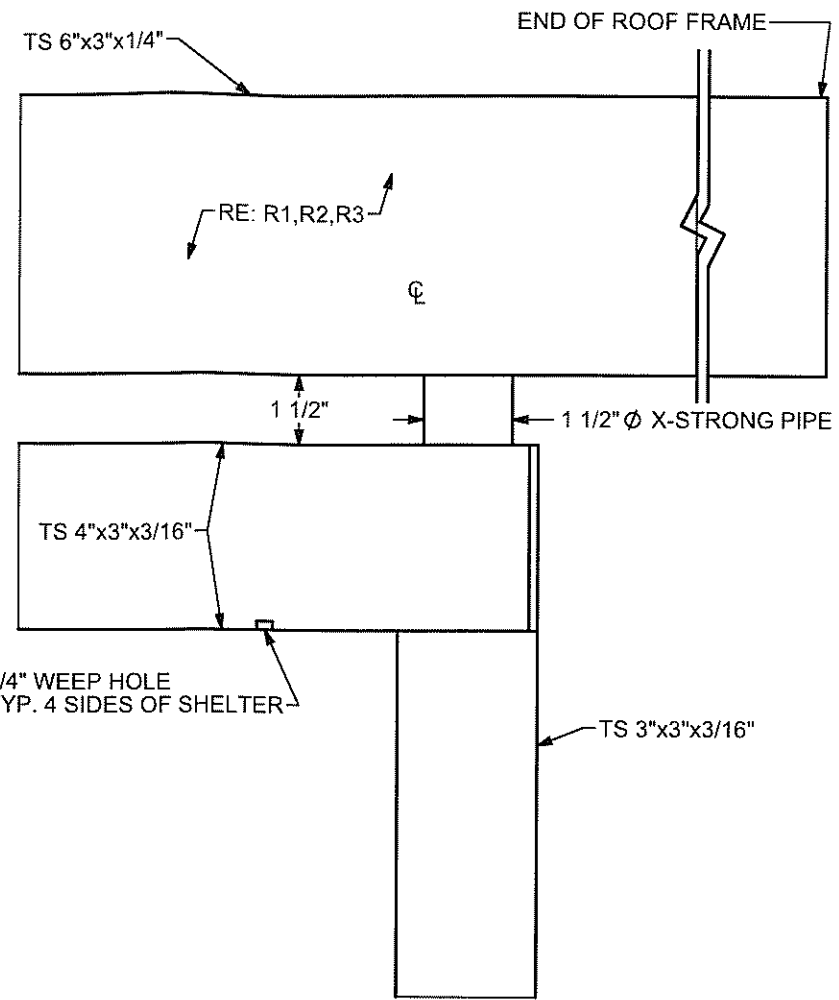
**K.C.A.T.A.  
PUBLIC PASSENGER SHELTER PROGRAM  
SHEET F1A**

**1** 5'x15' SHELTER (FRAME ONLY)  
1/2"=1'-0"

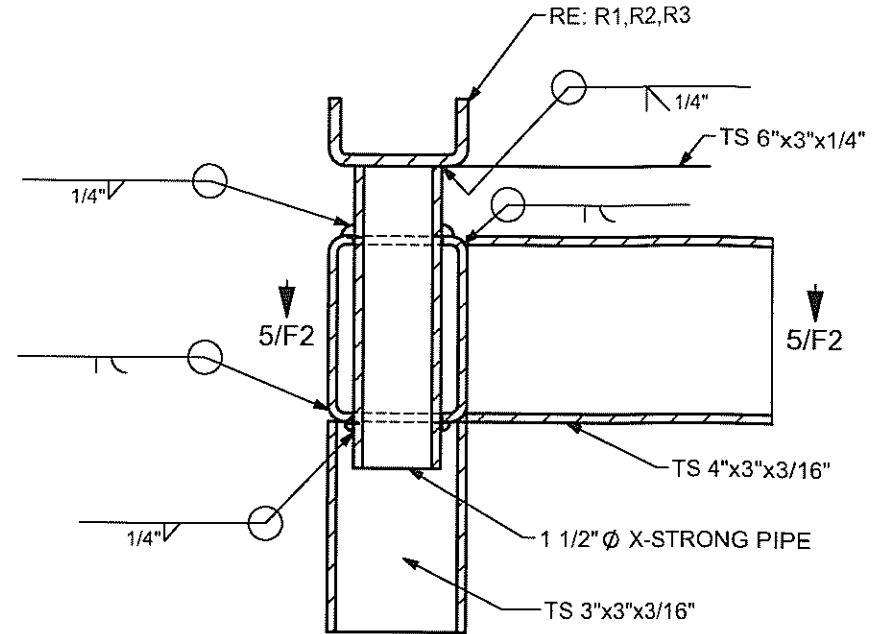




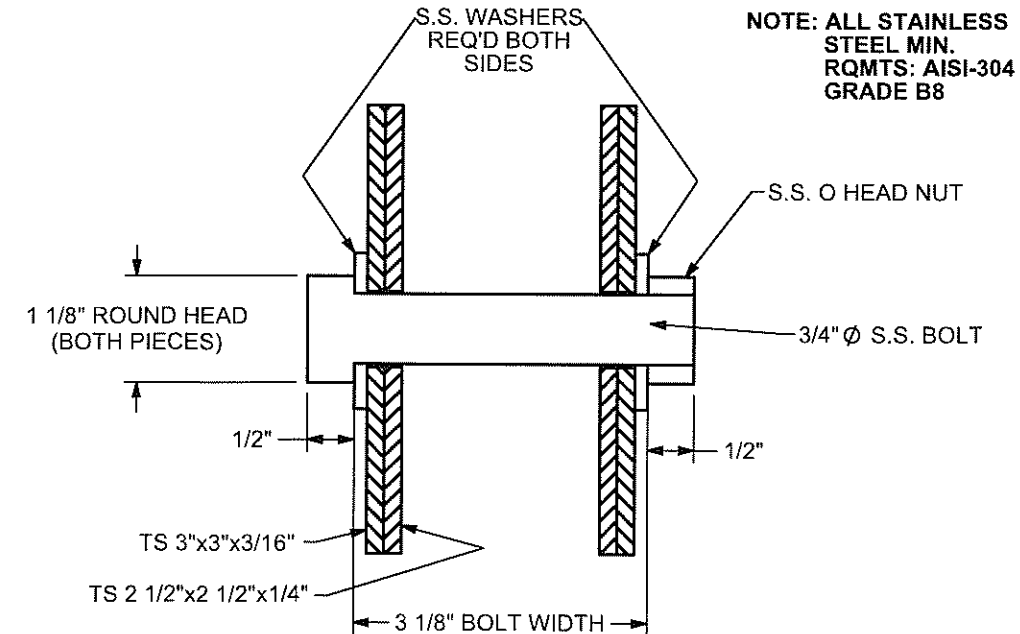
**1** SECTION THRU BEARING SHOE  
3"=1'-0" RE: FOOTING AND SITE PLANS



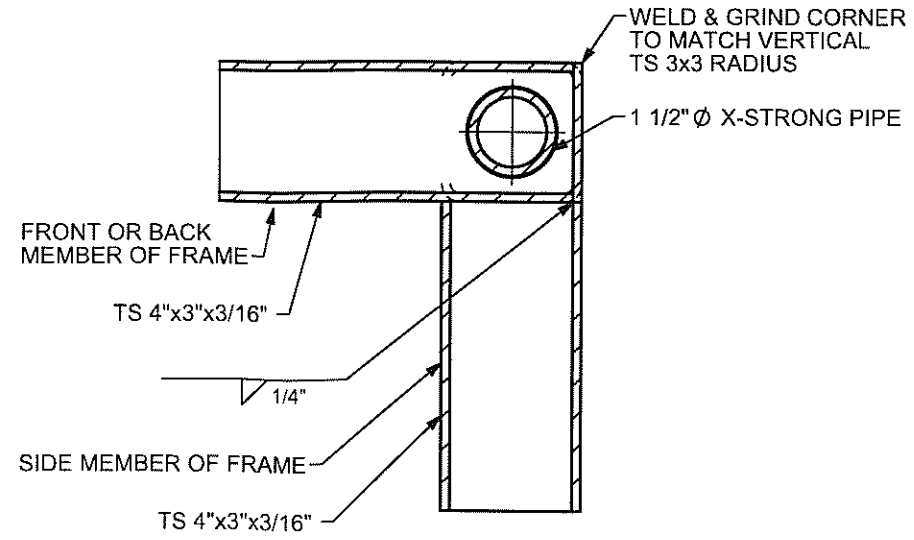
**2** ELEVATION/TOP CORNER  
3"=1'-0"



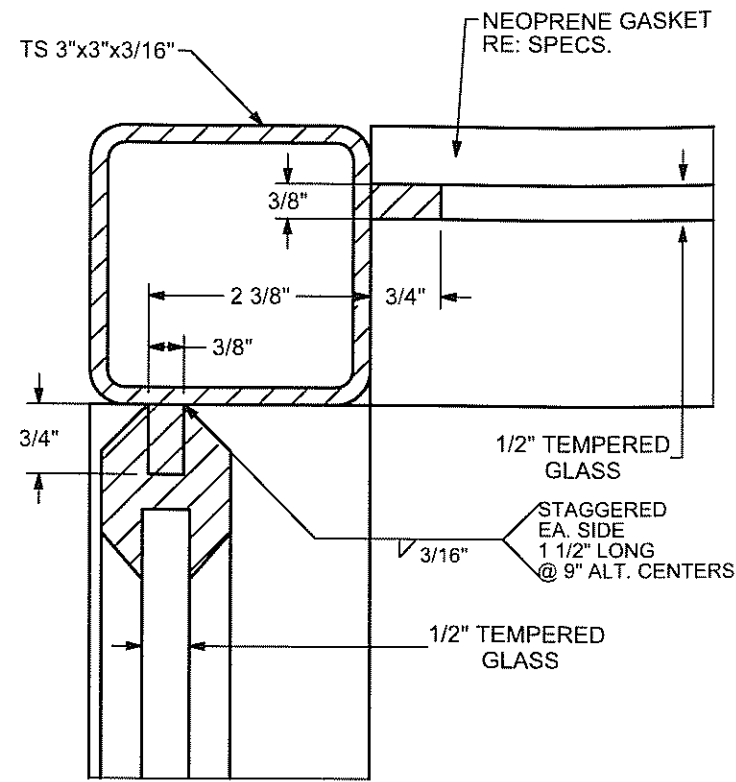
**3** SECTION THRU TOP CORNER  
3"=1'-0"



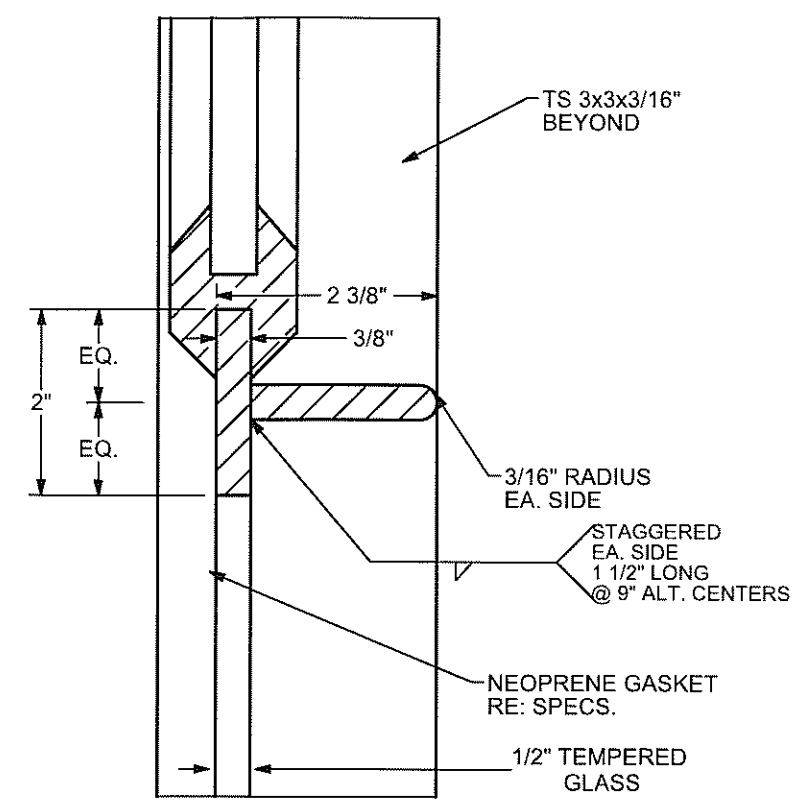
**4** SECTION THRU LEVELING BOLT  
6"=1'-0"



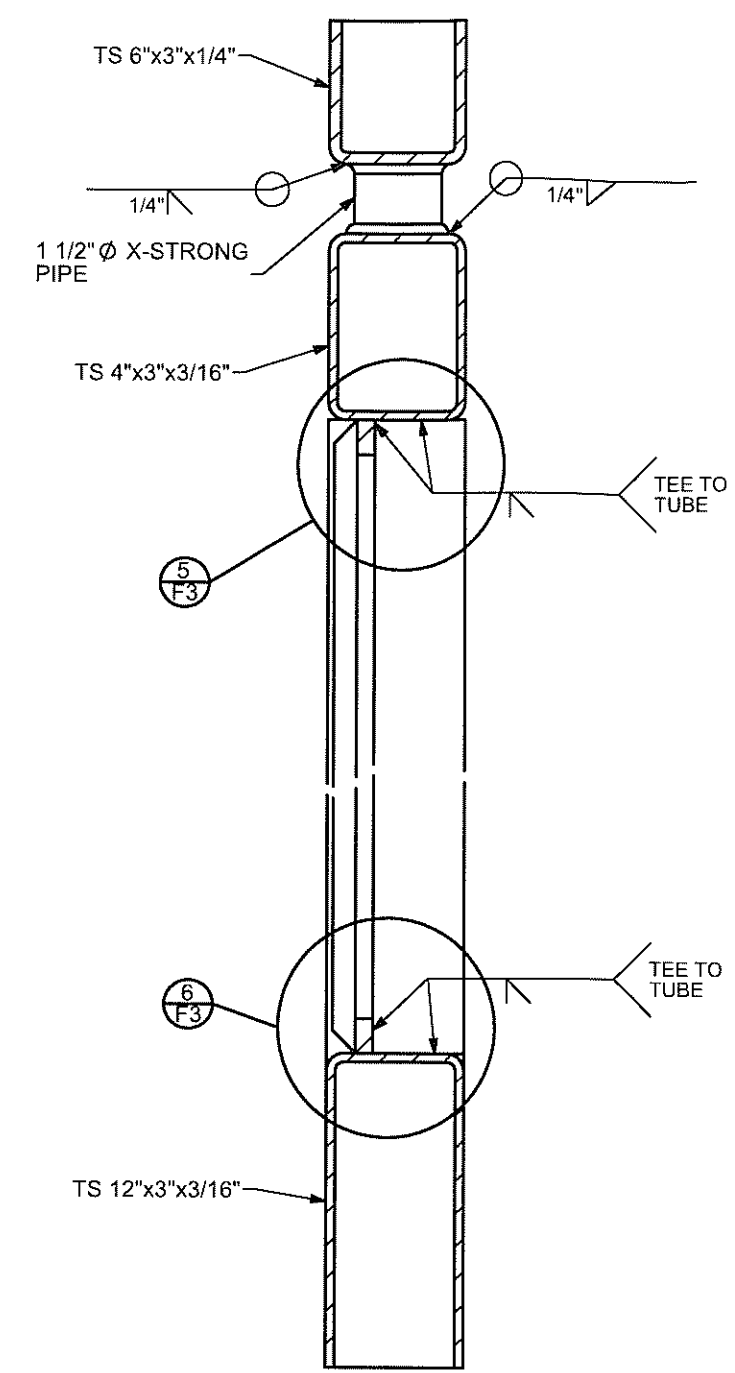
**5** PLAN/TOP CORNER  
3"=1'-0"



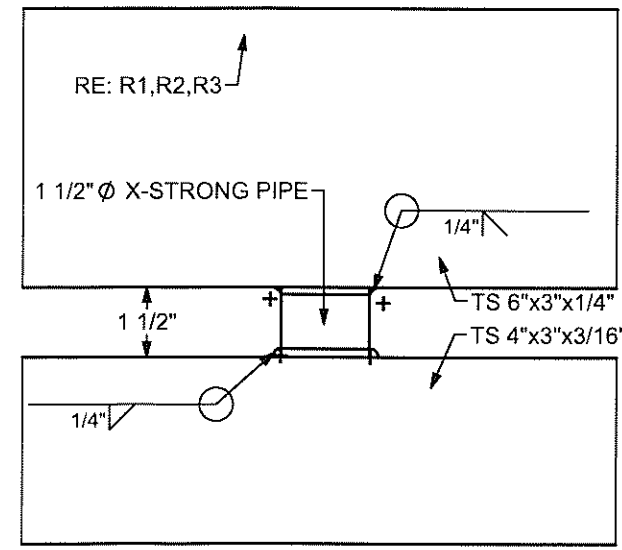
**2** PLAN/CORNER W/GASKET FLANGE  
6"=1'-0"



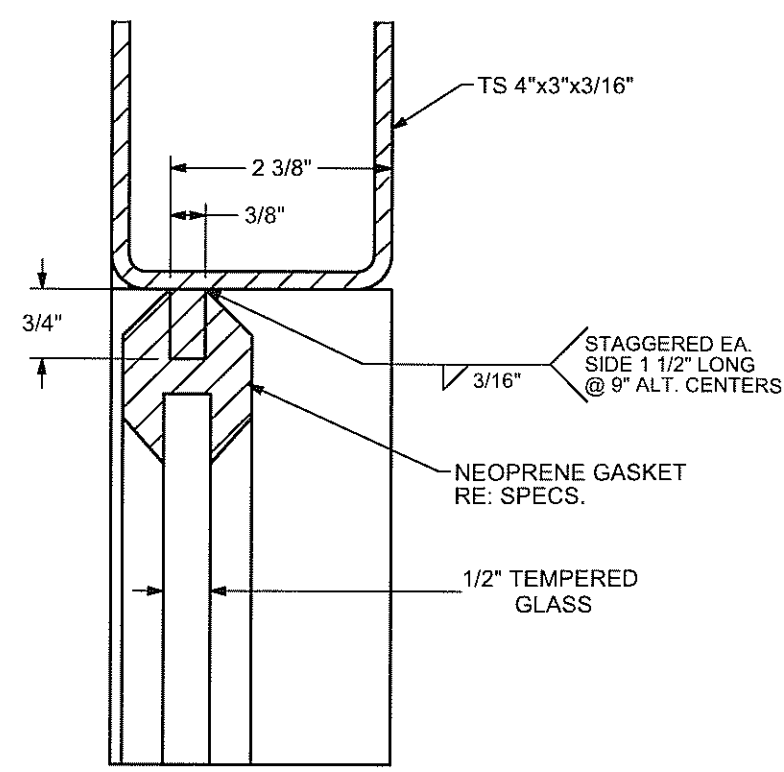
**3** PLAN/INTERMEDIATE TEE SUPPORT  
6"=1'-0"



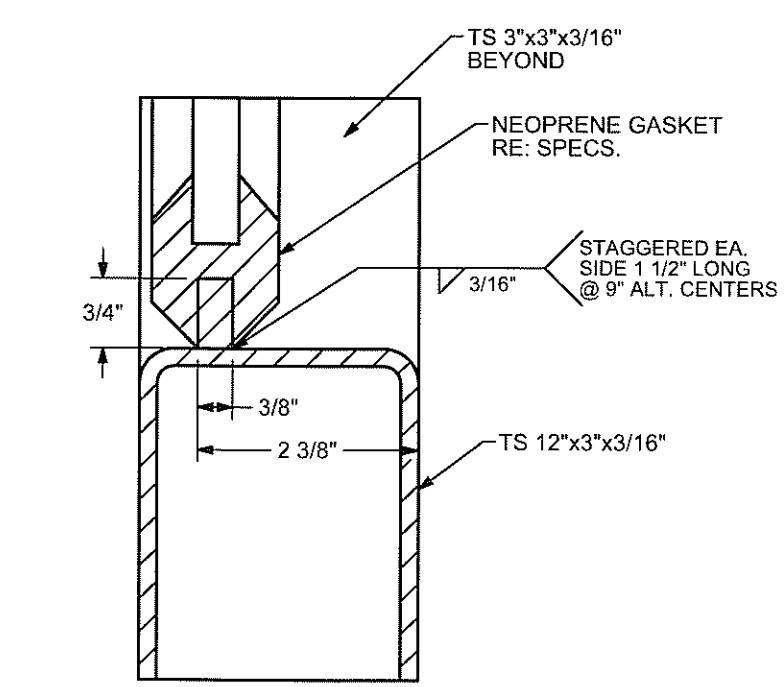
**7** SECTION THRU REAR @ SUPPORT  
3"=1'-0"



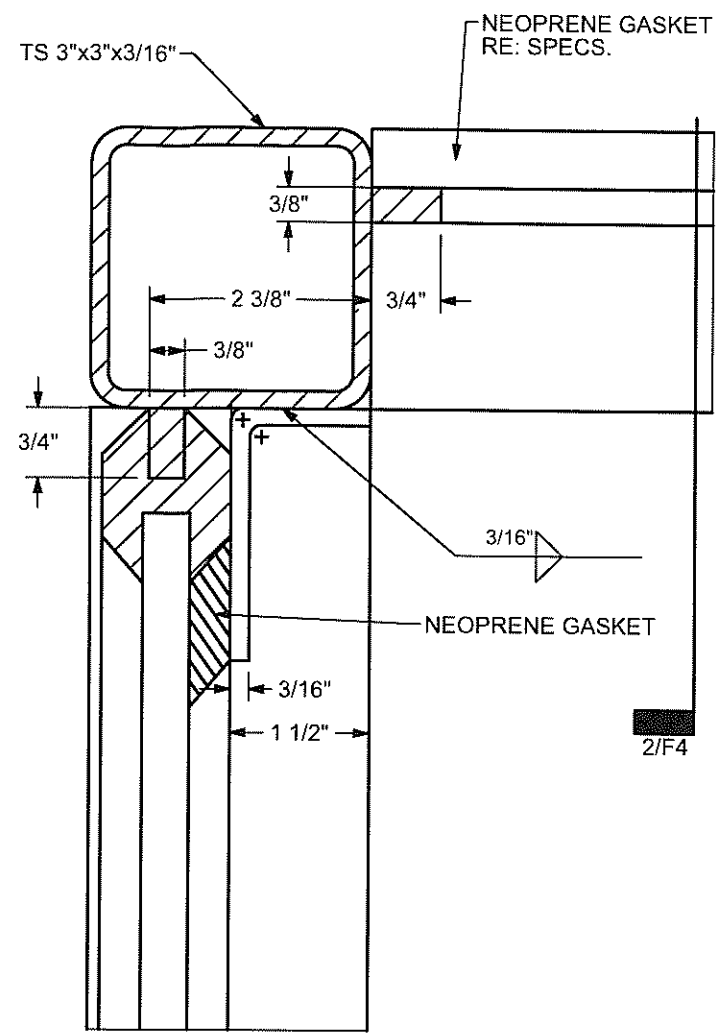
**4** ELEVATION/ INTERMEDIATE PIPE SUPPORT  
1 1/2"=1'-0"



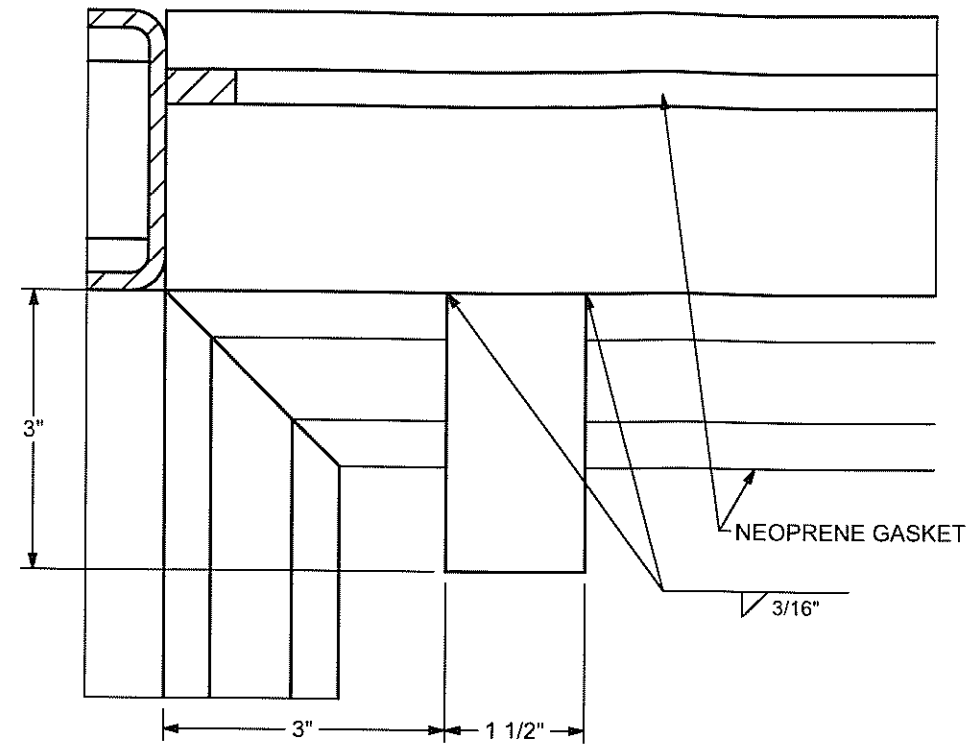
**5** SECTION THRU TS 4X3X3/16 W/GASKET FLANGE  
6"=1'-0"



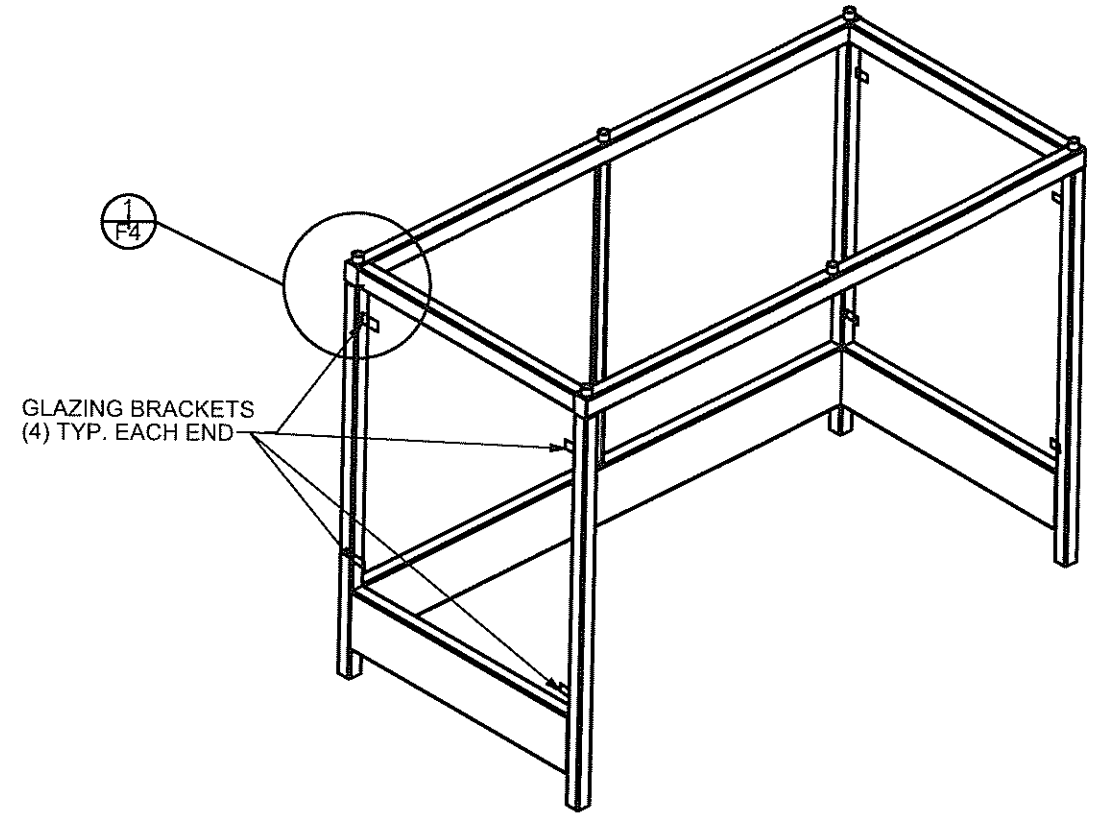
**6** SECTION THRU TS 12X3X3/16 W/GASKET FLANGE  
6"=1'-0"



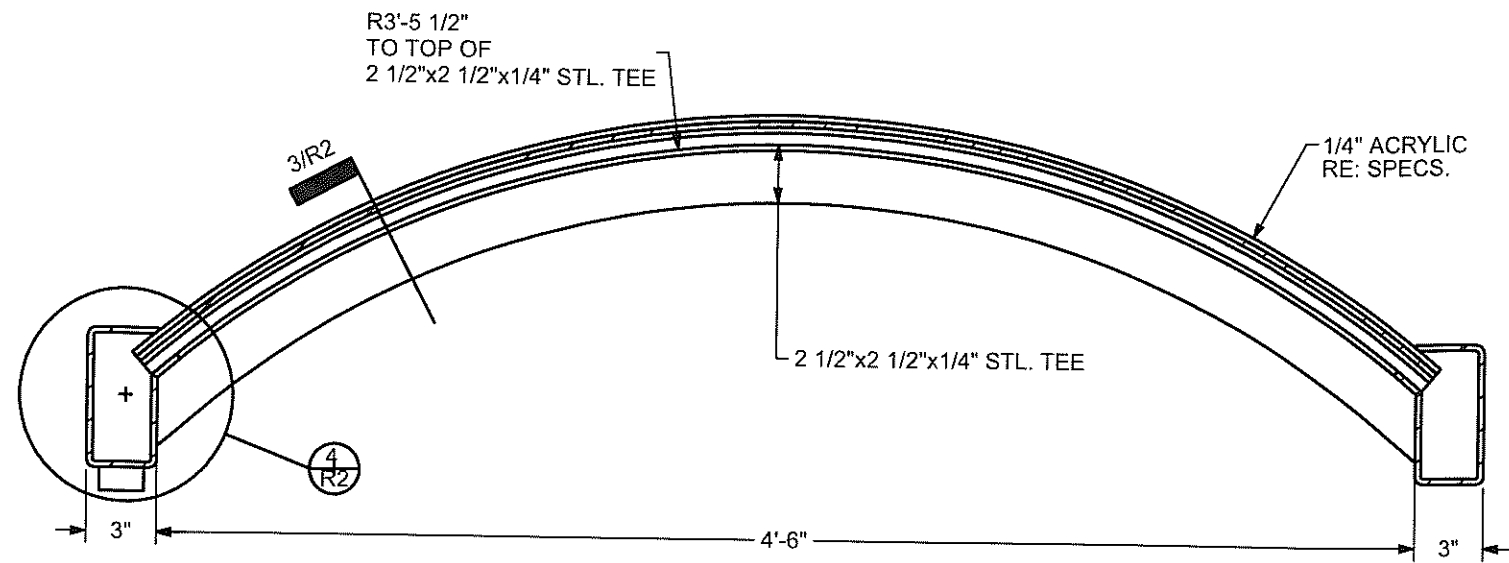
**1** PLAN/CORNER W/GLAZING BRACKETS  
6"=1'-0"



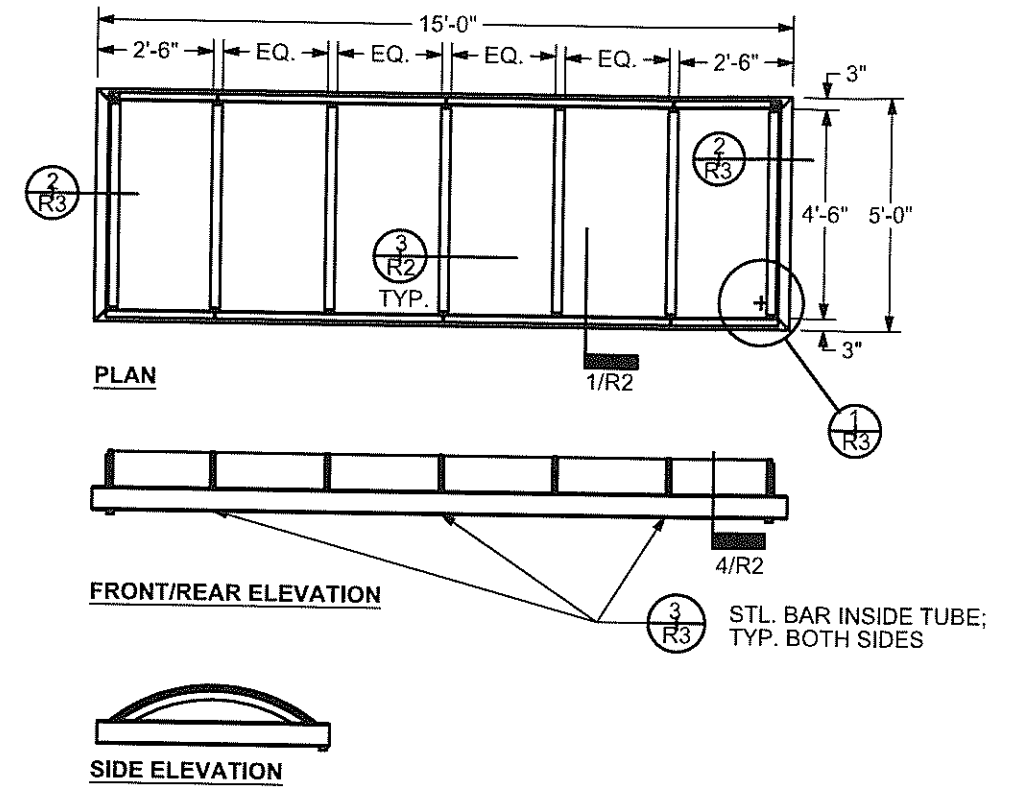
**2** SECTION SHOWING GLAZING BRACKET  
6"=1'-0"



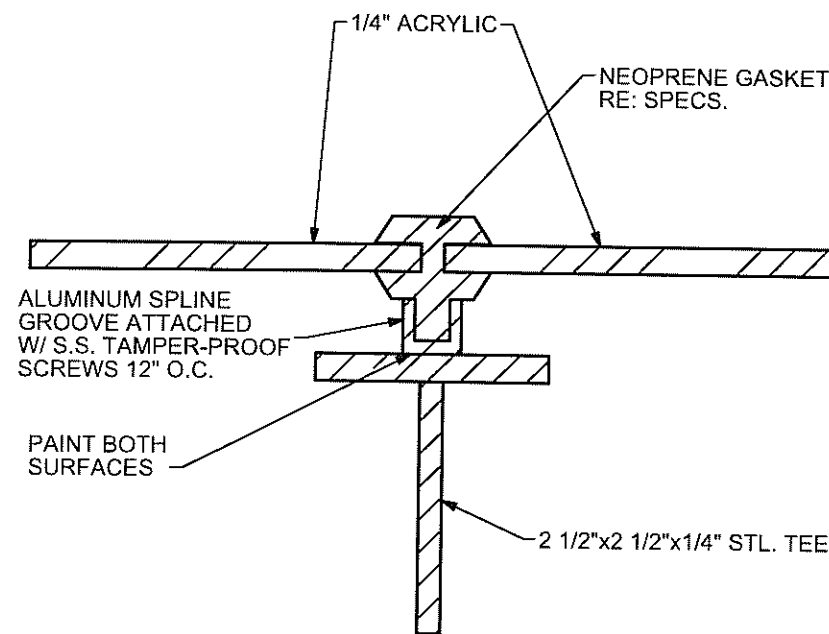
**3** GLAZING BRACKET LOCATIONS  
NTS



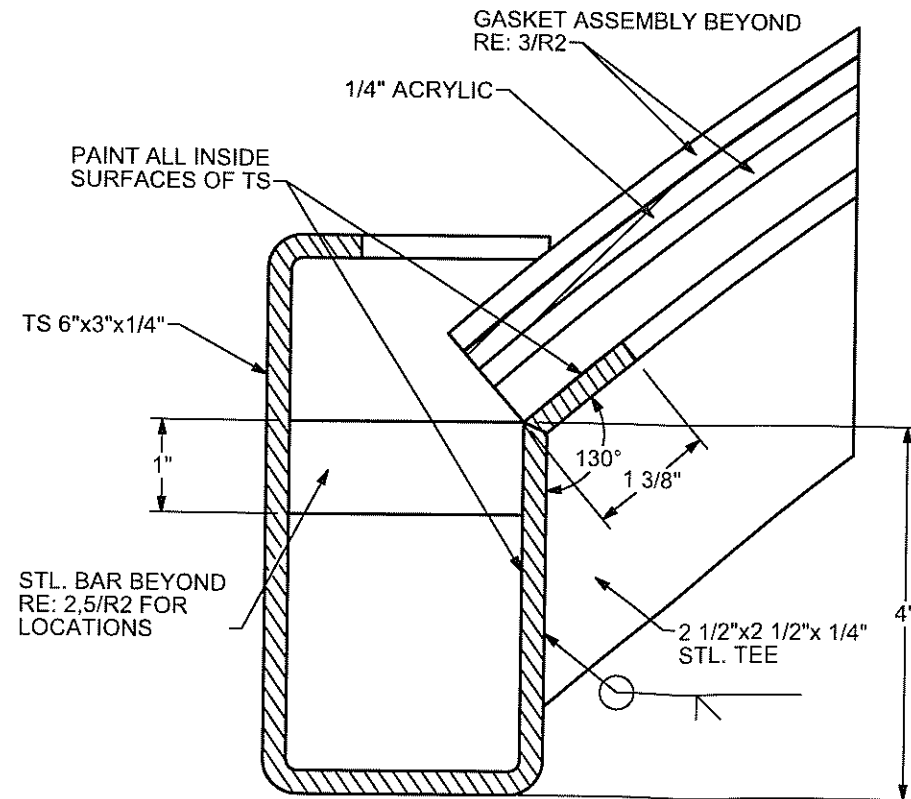
**1** TRANSVERSE SECTION THRU BARREL VAULT/ SHELTER TYPE 'B'  
1 1/2"=1'-0"



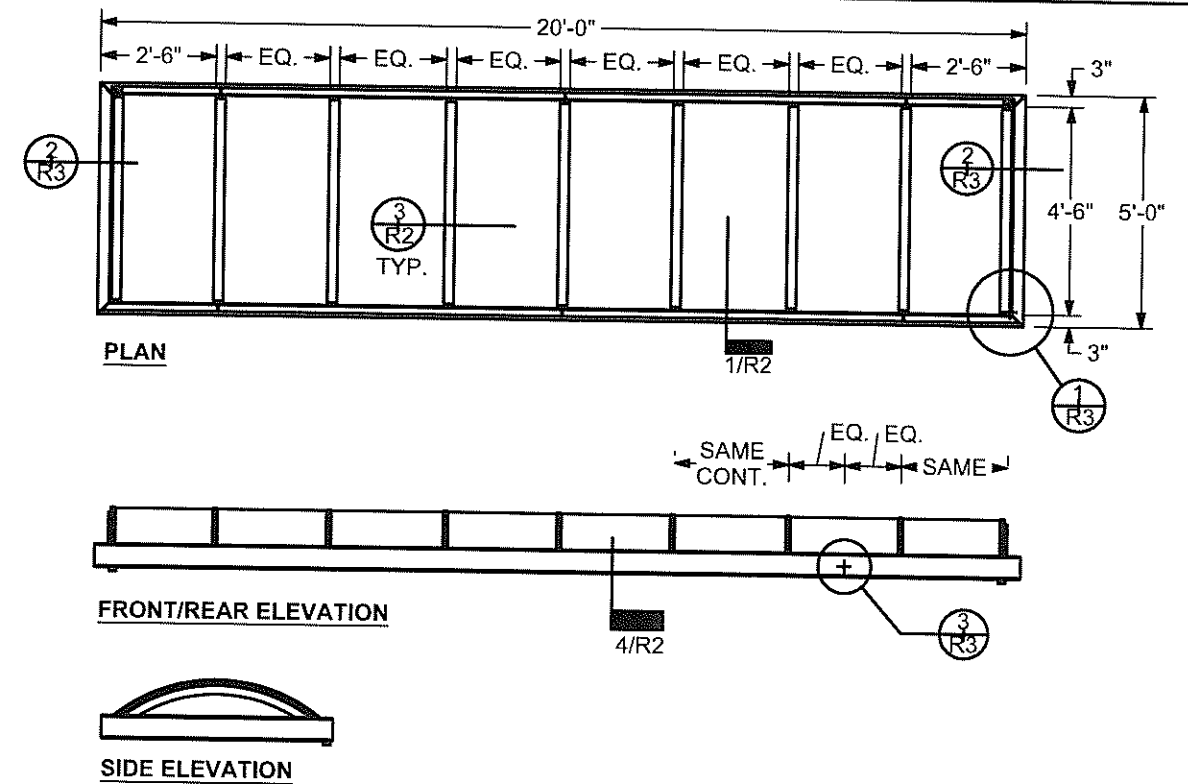
**2** 5'X10' SHELTER/ BARREL VAULT ROOF/ SHELTER TYPE 'B'  
1/4"=1'-0"



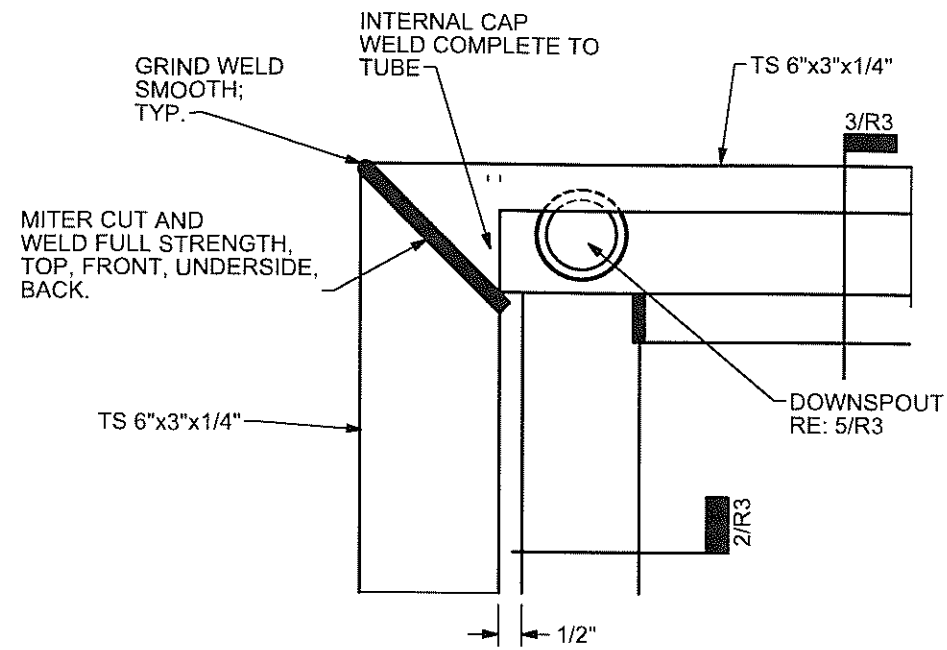
**3** LONGITUDINAL SECTION  
6"=1'-0"



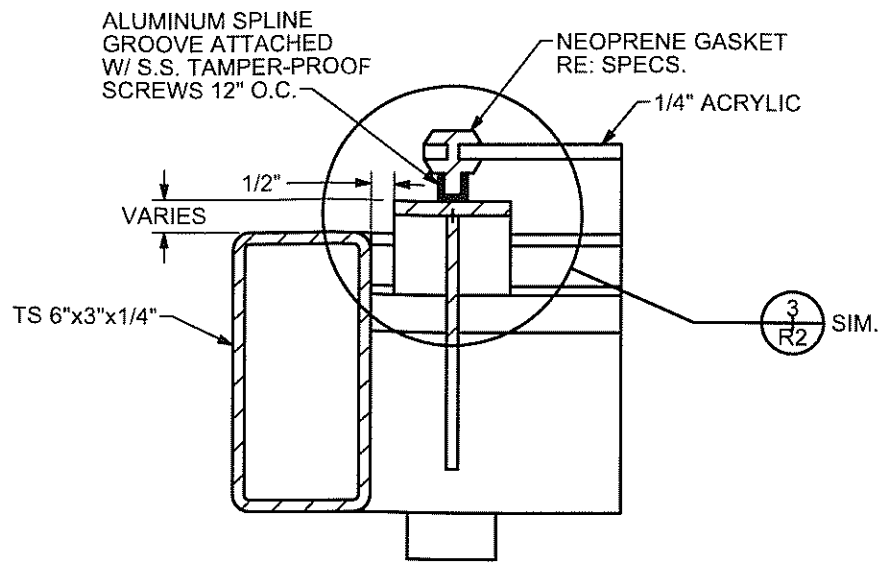
**4** SECTION THRU GUTTER/ TUBE  
6"=1'-0"



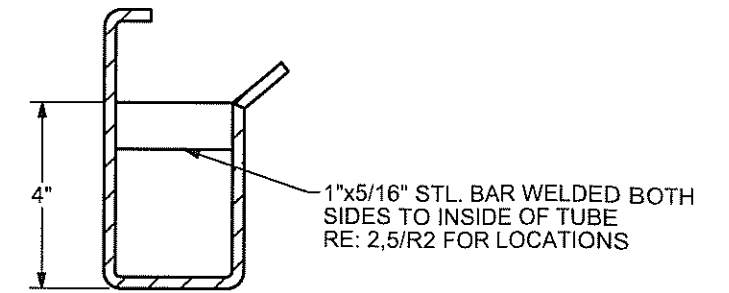
**5** 5'X10' SHELTER/ BARREL VAULT ROOF/ SHELTER TYPE 'B'  
1/4"=1'-0"



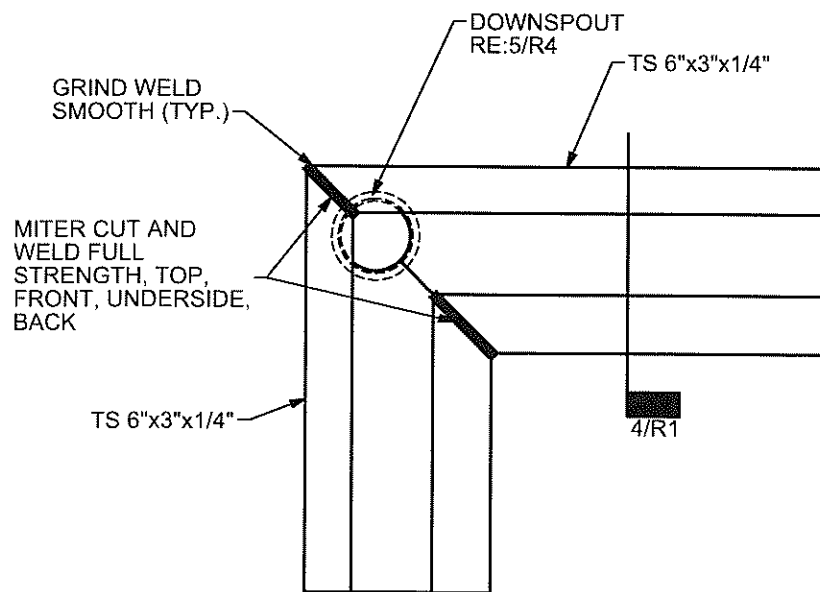
**1** PLAN/ CORNER DETAIL  
3"=1'-0"



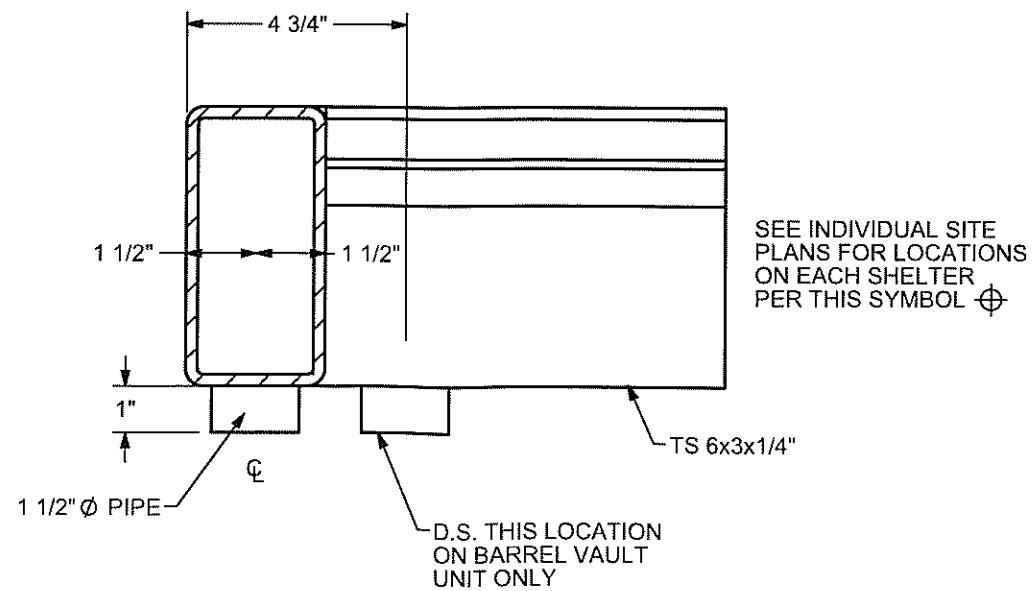
**2** SECTION THRU END OF BARREL VAULT ROOF  
3"=1'-0"



**3** SECTION THRU GUTTER/ TUBE  
3"=1'-0" RE:5/R2



**4** PLAN/ CORNER DETAIL  
3"=1'-0"



**5** ELEVATION/ DOWNSPOUT  
3"=1'-0"

GUTTER & DOWNSPOUT DETAILS  
K.C.A.T.A.  
PUBLIC PASSENGER SHELTER PROGRAM  
SHEET R3

# Emanuel Clean II Streetscape

| Name              | Company                                 | Email                         | Phone #                      |
|-------------------|-----------------------------------------|-------------------------------|------------------------------|
| JOE RAZELLICH     | KAAZ CONSTRUCTION                       | JOE@KAAZ.COM                  | (913) 680-3550               |
| George Gunter III | Gunter Const Co                         | Bids@GunterKC.com             | 816 471 7844                 |
| Bunny Feltner     | Soraya & Son Const.                     | Bfeltner@sorayaandsons.com    | 913-745-8800                 |
| Ed Childs         | NATIONAL Streetscape, Inc.              | NTNL.Streetscape@GMAIL.COM    | (816) 228-5777               |
| Kevin Childs      | National Streetscape, Inc.              | NTNL.Streetscape@gmail.com    | 816-228-5777                 |
| WALTER TYSON      | TYCON CONTRACTORS                       | WALT 816 924 3411             | 816 921 0473                 |
| Kevin Cooper      | Trinity Excavating & Const, Inc.        | kcooper@trinityco.biz         | 25-829-6000                  |
| Tyler Wesselman   | Mega Industries                         | mega.bids@megakc.com          | 816-472-8722                 |
| Andrew Onofre     | Alpha Energy & Electric                 | andrew@alphae.com             | 816-421-6767                 |
| Jay Ellis         | Olsson Assoc                            | jellis@oacconsulting.com      | 816-215-3640                 |
| David Williams    | Musselman + Hall                        | dwilliams@mandh.net           | 816-861-1234                 |
| Mark Montgomery   | City of Kansas City, MO                 | mark.montgomery@kcmo.org      | 816-256-6038                 |
| Chad Thompson     | City of Kansas City MO                  | chad.thompson@kcmo.org        | 816-513-2738                 |
| Rebecca Leath     | Leath & Sons, Inc                       | beckyleath@leathandsons.com   | 816-353-8623                 |
| Cornell Lee       | A K L E E' Const                        | AKLeeConst@KCMO.COM           | 816 277-2076                 |
| Mike Martin       | Freeman Concrete Const                  | mike@freemanconcreteconst.com | 913-825-0744                 |
| Dave Haggard      | J.M. Fahoy Construction Co              | davehaggard@jmfahoy.com       | 816-763-3010<br>816-765-4464 |
| John Wright       | Pyramid Excavation                      | swright@pyramidexcavation.com |                              |
| CHRIS TSCHIRMART  | INFINITE ENERGY (DBE PROGRESS ELECTRIC) | CHRIS@IECBA.COM               | 816-763-7471                 |
| Alex Weidenbenner | KCMO Public Works                       | alex.weidenbenner@kcmo.org    | 816 226 9382                 |