



**Access Engineering, LLC**  
11820 Tesson Ferry Road, Ste. 203  
St. Louis, MO 63128

(314) 849-8445  
Website: [acceng.com](http://acceng.com)

*Transportation Engineering*

*Civil Engineering*

*Construction Management*

*Traffic Engineering*

---

To: All Plan Holders  
From: Access Engineering, LLC  
Date of Issue: April 2, 2014  
Project: Rehabilitation of the Holloway Culvert - Addendum #2  
Project Number: BRM-5401 (679)

---

This addendum forms a part of the Contract Documents for the Project. Contractors are required to acknowledge the receipt of this addendum by listing the Addendum number and date at the Addendum Acknowledgement area in the bid form. All Addenda are to be stapled to the back of each bid form.

Bidders are hereby informed that the Contract Documents are modified as follows:

**CHANGE BID OPENING DATE:**

1. *Revise all references to the bid opening date in the contract documents to Wednesday April 9, 2014 @ 10:00 a.m. prevailing local time. The bid opening location will remain unchanged.*

**PROJECT SPECIFICATIONS:**

*Page 1 – Information to Bidders*

1. *Revise line #7 date from April 28<sup>th</sup> to May 26<sup>th</sup>.*

*Bid Tab:*

1. *Revise Quantity of Line No. 16 – 7034041 CLASS B-1 CONCRETE from 8 CY to 10 CY.*

*Job Special Provisions - H. PARTIAL REMOVAL OF CULVERT CONCRETE*

1. *revise 216.70.3.4 to add the following, “saw cutting per 216.60.2.1 is not required”.*

**DRAWING CHANGES:**

**Sheet T-1 TITLE SHEET**

1. *Revise Total Bill of Materials Item CLASS B-1 CONCRETE from 8 CY to 10 CY.*

**Sheet P-1 FLOOR CONCRETE REPAIRS**

1. Revise Total Bill of Materials Item CLASS B-1 CONCRETE from 8 CY to 10 CY.

Sheet D-1 SLAB JOINT REPAIR DETAILS:

1. *Revise Detail B/D-1 to eliminate wall saw cut and patching (See attached drawing).*

Sheet D-2 CULVERT OUTFALL:

1. *Revise Detail A to show thickness of slab as 12”.*

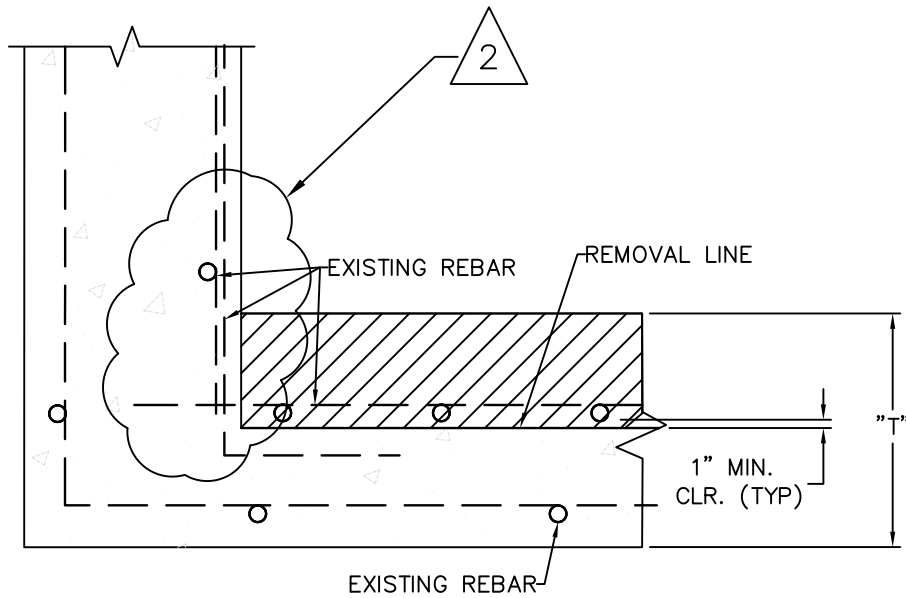
ATTACHMENTS:

1. *Revised Bid Form*
2. *Revised detail B/D-1*

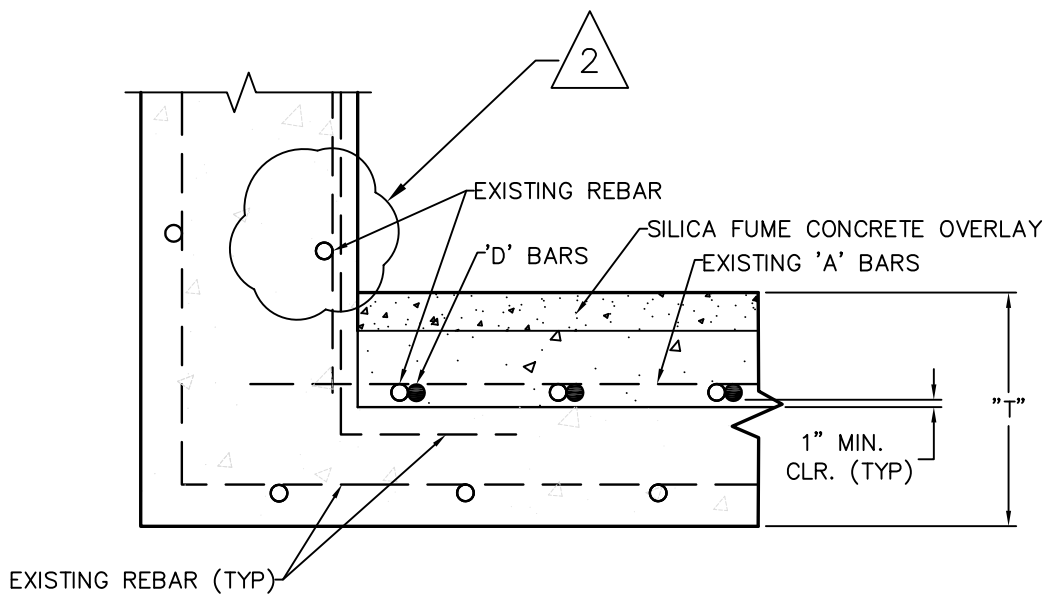
End of Addendum #2

**SUMMARY OF QUANTITIES BRM-5401 (679)-REHABILITATION OF THE HOLLOWAY CULVERT - ADDENDUM #2**

LINE NO.	ITEM NO.	ITEM DESCRIPTION	UNIT	QUANTITY	UNIT COST	EXTENTION
<b>BRIDGE ITEMS</b>						
1	2031000	CLASS A EXCAVATION	CY	26		
2	2063400	CLASS 4 EXCAVATION IN ROCK	CY	23		
3	2161502	REMOVAL OF CONCRETE WEARING SURFACE (3")	SY	1503		
4	216-99.06	PARTIAL REMOVAL OF CULVERT CONCRETE (Exp Jts.)	SF	1424		
5	3049907	TYPE 1 AGGREGATE FOR BASE (CU YDS)	CY	117		
6	5053000	SILICA FUME CONCRETE WEARING SURFACE (3-1/2")	SY	1540		
7	610-99.01	GROUT EXISTING GABIONS	LS	1		
8	6113010	FURNISHING TYPE 2 ROCK BLANKET	CY	77		
9	6113020	PLACING TYPE 2 ROCK BLANKET	CY	77		
10	6131018	TIE BAR (DRILLING, FURNISHING AND INSTALLATION)	EA	30		
11	6161005	CONSTRUCTION SIGNS (special WO21-5b)	SF	240		
12	616-11.20	FURNISH AND INSTALL HOLLOWAY ROAD CULVERT PROJECT SIGN	EA	1		
13	6181000	MOBILIZATION	LS	1		
14	621-99.06	FLOWABLE BACKFILL	CY	5		
15	7032001	CLASS B CONCRETE (CULVERTS)	CY	99		
16	7034041	CLASS B-1 CONCRETE (CULVERTS)	CY	10		
17	7040102	SUBSTRUCTURE REPAIR (UNFORMED) roof repair #'s 1,7,9	SF	168		
18	7040108	MODIFIED DECK REPAIR	SF	182		
19	7061000	REINFORCING STEEL (OUTFALL)	LB	4940		
20	7061030	REINFORCING STEEL (CULVERTS)	LB	3720		
21	704-01.09	TOTAL SURFACE HYDRO DEMOLITION (1/2")	SY	1503		
22	704-01.09A	TOTAL SURFACE HYDRO DEMOLITION (3-1/2")	SY	37		
23	704-99.01	PREPARE CHANNEL SURFACE	LS	1		
					TOTAL BASE BID	
<b>ADD ALTERNATE A</b>						
LINE NO.	ITEM NO.	ITEM DESCRIPTION	UNIT	QUANTITY	UNIT COST	EXTENTION
24	7040102A	SUBSTRUCTURE REPAIR (UNFORMED) - roof repair #'s 2,3,4,5,6, 8, 10,11,12	SF	145		
					TOTAL ALT A	
					TOTAL BASE PLUS ALT A	
<b>ADD ALTERNATE B</b>						
LINE NO.	ITEM NO.	ITEM DESCRIPTION	UNIT	QUANTITY	UNIT COST	EXTENTION
25	704-99.03	PRESSURE INJECTING	LF	774		
					TOTAL ALT B	
					TOTAL BASE PLUS ALT A+B	
<b>ADD ALTERNATE C</b>						
LINE NO.	ITEM NO.	ITEM DESCRIPTION	UNIT	QUANTITY	UNIT COST	EXTENTION
26	7040102B	SUBSTRUCTURE REPAIR (UNFORMED) - Walls	SF	170		
					TOTAL ALT C	
					TOTAL BASE PLUS ALT A + B + C	



CONCRETE REMOVAL



CONCRETE REPAIR

B  
 D-1
 

 CONCRETE REMOVAL/REPAIR  
 AT WALL CORNER - SECTION

ADDENDUM #2