

ADDENDUM NO. 2

ISSUED BY: *Great River Engineering*
2826 S Ingram Mill Road
Springfield, Missouri 65804
(417) 886-7171
(417) 886-7591 --- FAX

DATE: September 29, 2014

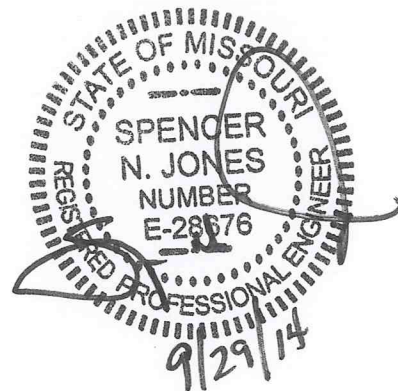
FOR: **MORGAN COUNTY BRIDGE REPLACEMENT**
BRIDGE 23900061
GRA NO. 13-3263

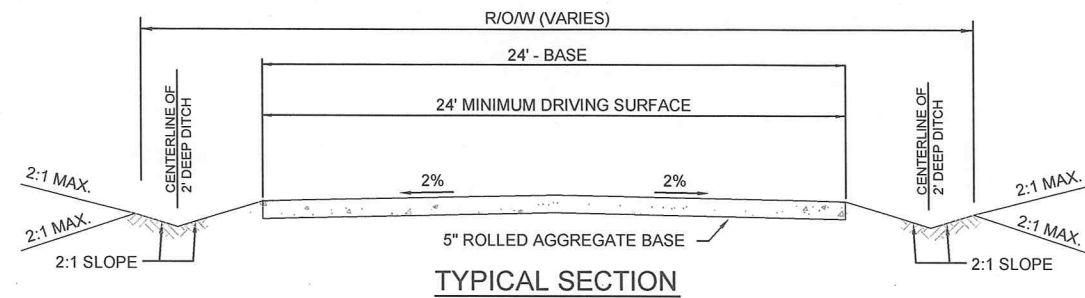
The attached revisions hereby supersede any and all data with which they may conflict as indicated on the Drawings, Specifications and related documents issued in the original set. Each trade is responsible for changes in its work caused by changes in the work of other trades. This addendum is a part of and shall be attached to the original set of plans and specifications for the work.

Construction Plans

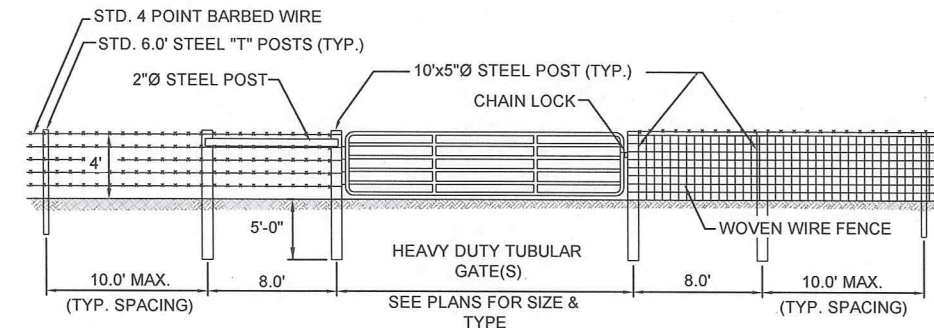
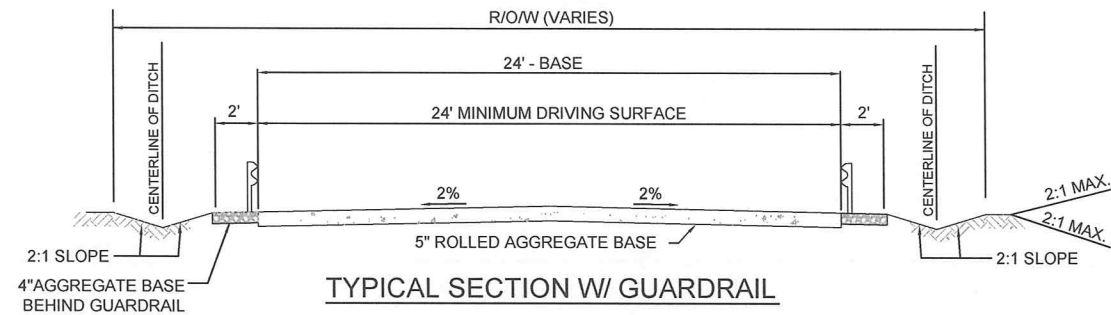
Through a copying error the following sheets were omitted from the original construction plan set. These shall be added to the construction plans:

- Sheets C3 (Typical Details)
- S3 (Intermediate Bent Details)
- S4 (Slab Beam Details)

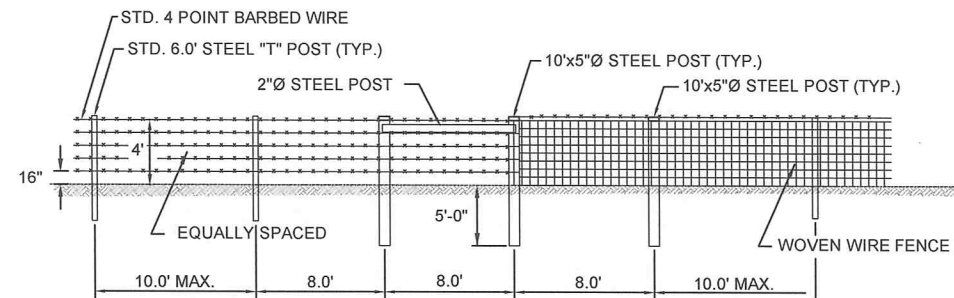




TYPICAL SECTION W/ GUARDRAIL



TYPICAL FENCE GATE AND BRACING
(FOR BARBED WIRE & WOVEN WIRE FENCING)



TYPICAL CORNER AND BRACING
(FOR BARBED WIRE & WOVEN WIRE FENCING)

- CONTRACTOR SHALL MATCH EXISTING FENCE TYPE (I.E. 5 STRAND BARBED WIRE OR WOVEN WIRE FENCE)

NOTES:

- FENCING SHOWN IN THIS DETAIL IS THE MINIMUM REQUIRED BY THE ENGINEER.
- TIES TO EXISTING FENCE REQUIRE THE SAME LAYOUT AS FENCE CORNERS (I.E. CORNER POSTS WITH BRACING.)
- CORNER AND BRACING POST SHALL BE BURIED A MINIMUM OF 5 FEET.
- ALL 10' x 5" Ø STEEL PIPE MUST HAVE WELD ON DOME CAP. PLASTIC CAP WILL NOT BE ACCEPTED.

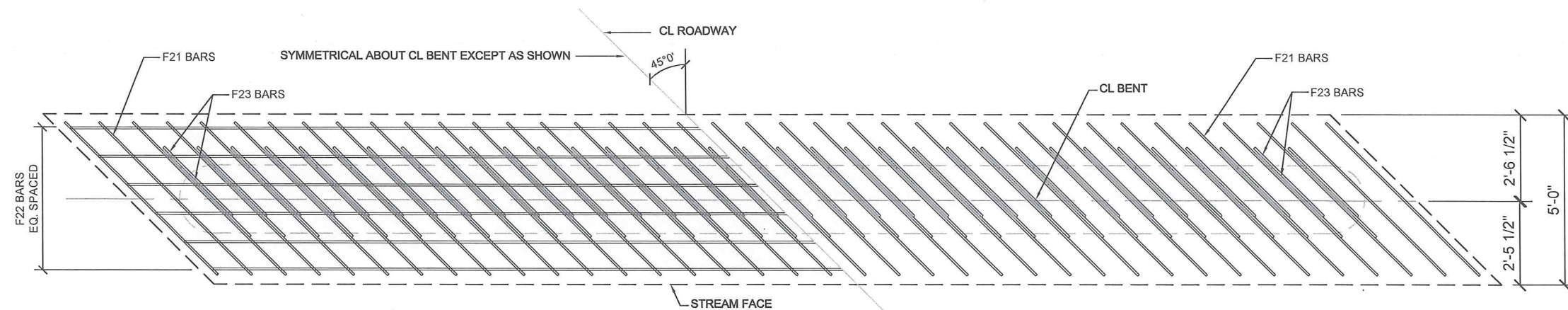


Date	
Revision/Issue	
No.	

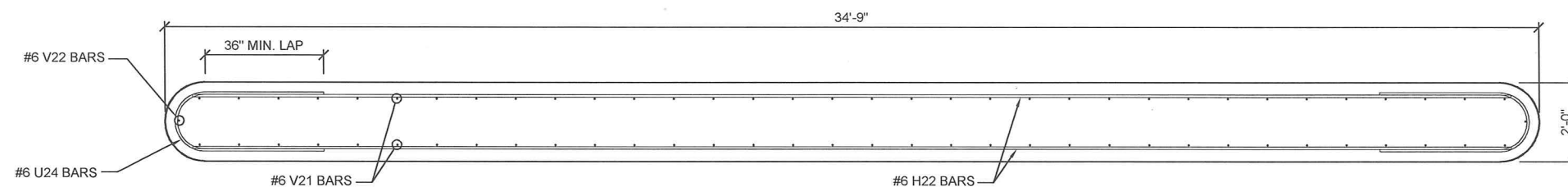
HARRISON ROAD BRIDGE #23900061 OVER STRAIGHT FORK CREEK
MORGAN COUNTY, MISSOURI
TYPICAL DETAILS

CHECKED BY: SJ
DRAWN BY: KFT
JOB NUMBER: 13-3263
FILE NAME: 13-3263_Civil
SCALE: NTS
ISSUE DATE: 01.22.2014
SHEET NUMBER:

C3



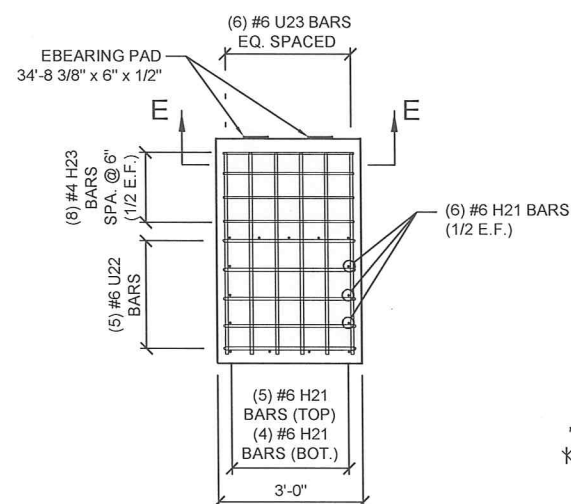
SECTION A-A
PLAN VIEW OF FOOTING REINFORCING



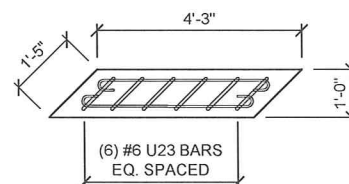
SECTION B-B

NOTE:

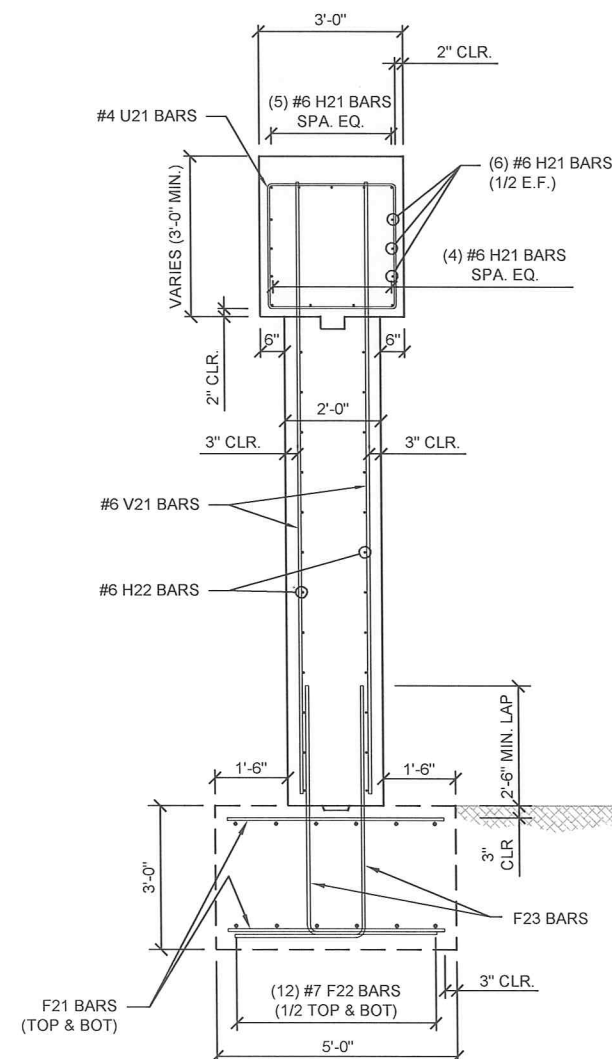
LABELS FOR REINFORCING STEEL ARE SHOWN FOR BENT #2.
BENT #3 IS IDENTICAL EXCEPT FOR THE FIRST NUMBER OF THE BAR LABEL.
EXAMPLE: #5 U21 BARS = BENT #2
#5 U31 BARS = BENT #3



SECTION C-C

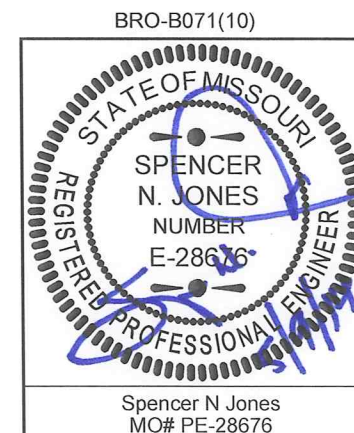


SECTION E-E



SECTION D-D

NOTE: THIS DRAWING NOT TO SCALE. FOLLOW DIMENSIONS.

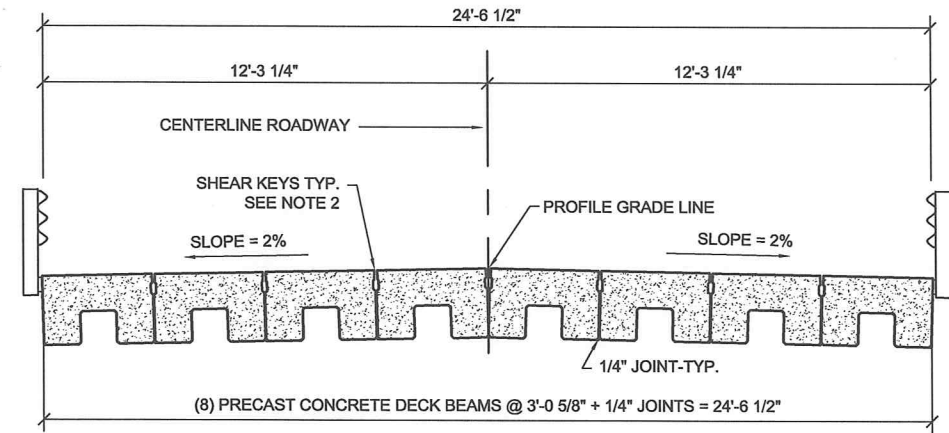
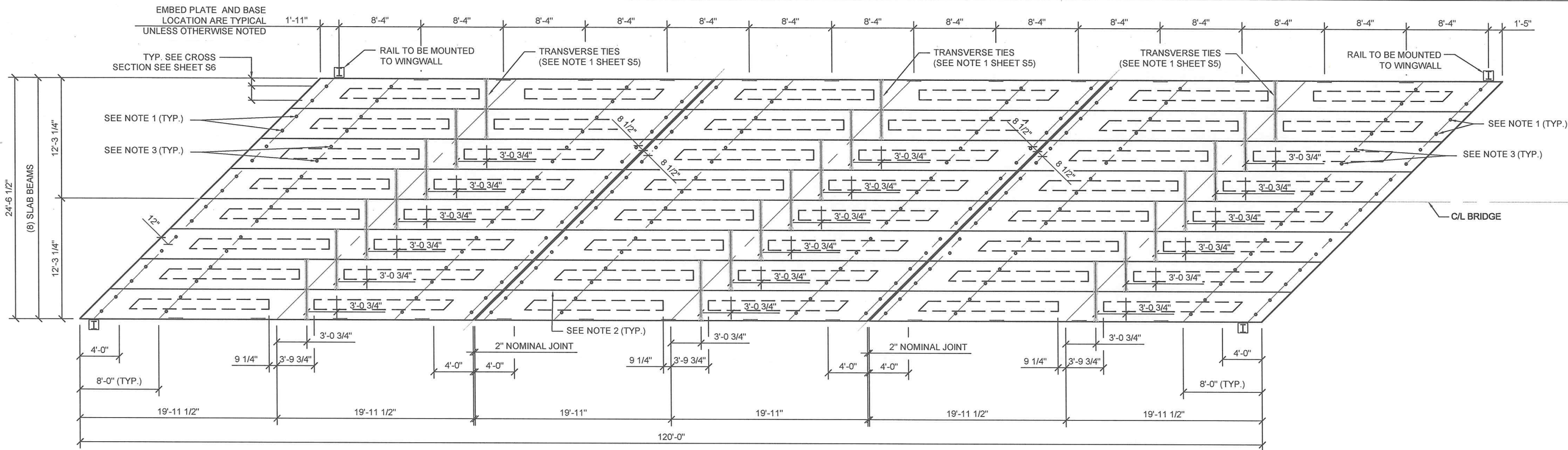


No.	Revision/Issue	Date
1		
2		
3		
4		
5		

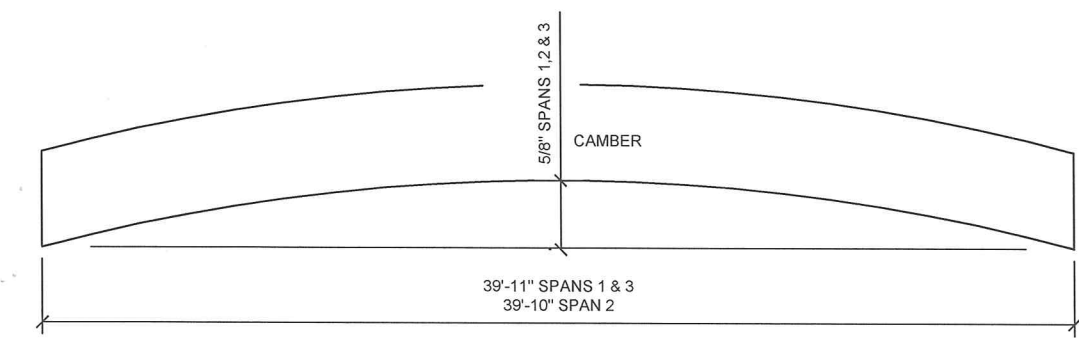
HARRISON ROAD BRIDGE #23900061 OVER STRAIGHT FORK CREEK
MORGAN COUNTY, MISSOURI
INTERMEDIATE BENT DETAILS

CHECKED BY: SJ
DRAWN BY: KFT
JOB NUMBER: 13-3263
FILE NAME: 13-3263_Civil
SCALE: NTS
ISSUE DATE: 01.22.2014
SHEET NUMBER:

S3



TYPICAL CROSS SECTION OF ROADWAY
(NEAR CL OF STRUCTURE)



TYPICAL SLAB CAMBER

SLAB SHALL BE CAMBERED FOR DEAD LOAD DEFLECTIONS.

NOTE: THIS DRAWING NOT TO SCALE. FOLLOW DIMENSIONS.

SLAB BEAM LAYOUT PLAN

DESIGN DATA

DESIGN SPECIFICATIONS: 2002 A.A.S.H.T.O. STANDARD SPECIFICATIONS FOR HIGHWAY BRIDGES, 17TH EDITION AND CURRENT INTERIMS

THE CONTRACTOR SHALL FOLLOW THE SPECIFICATIONS AS STATED IN THE "MISSOURI STANDARD SPECIFICATIONS FOR HIGHWAY CONSTRUCTION," 2011 AND CURRENT SUPPLEMENTAL SPECIFICATIONS REVISIONS.

DESIGN LOADING: HL-93
SEISMIC PERFORMANCE CATEGORY 'A'
EARTH --- 120 PSF
EQUIVALENT FLUID PRESSURE --- 45 POUNDS/CU. FT.
35 POUND/SQUARE FOOT FUTURE WEAR SURFACE SUPERSTRUCTURE:
SIMPLY SUPPORTED NON-COMPOSITE FOR DEAD AND LIVE LOADS.

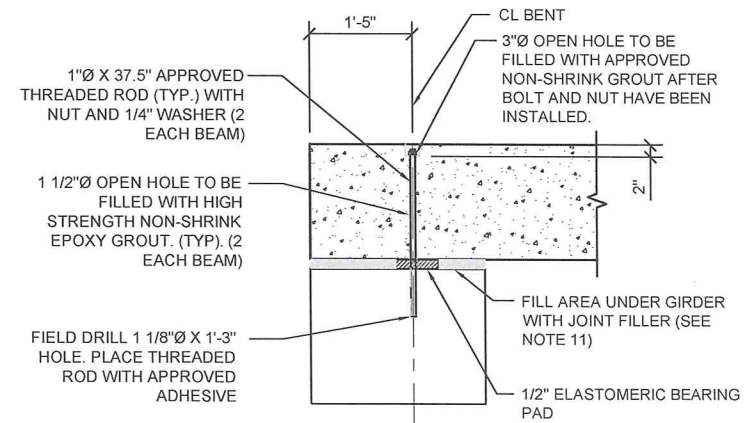
DESIGN UNIT STRESSES

CONCRETE $f'_c = 6,000$ psi
REINFORCING STEEL STRUCTURAL $f_y = 60,000$ psi
CARBON STEEL $f_y = 50,000$ psi

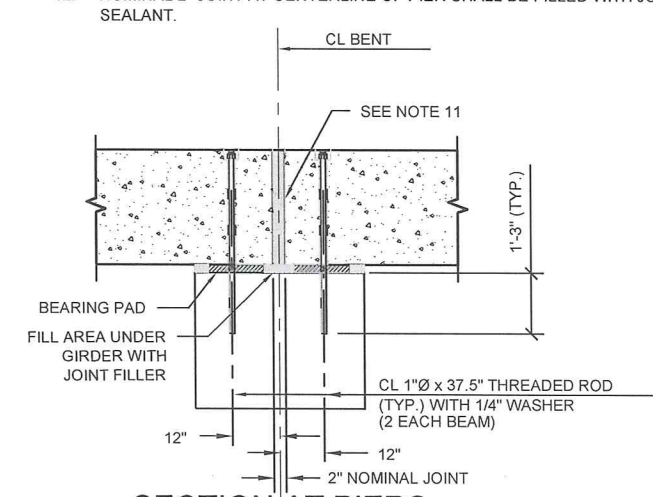
GENERAL NOTES

NOTES:

- AFTER BEAMS HAVE BEEN ERECTED, HOLES SHALL BE DRILLED INTO SUBSTRUCTURE AND ANCHOR BOLTS PLACED. ANCHOR HOLES SHALL BE FILLED WITH EPOXY GROUT TO TOP OF BEAM. ANCHOR BOLTS SHALL BE EQUIVALENT TO ASTM A 307.
- LONGITUDINAL SHEAR KEYS SHALL BE EPOXY GROUT.
- USE RECESSED LIFT ANCHORS ON EACH END. FOLLOW MANUFACTURER'S RECOMMENDATIONS FOR INSTALLATION.
- ALL REBAR IN SLAB BEAMS SHALL BE EPOXY COATED.
- DO NOT LIFT BEAMS UNTIL CONCRETE STRENGTH IS EQUAL TO 3500 PSI.
- PROVIDE A TYNE FINISH ON TOP OF SLAB BEAMS WITH DEPTH OF TYNES 1/4".
- JOINT FILLER MUST BE IN PLACE PRIOR TO SETTING SLAB BEAMS.
- SLAB BEAMS MUST MEET A DEFLECTION CRITERIA OF $L/800$
- SUPPLIER NEEDS TO BE PRE APPROVED
- SHOP DRAWINGS SHALL BE SUBMITTED FOR REVIEW AND APPROVAL
- CONTRACTOR SHALL SUBMIT GROUT MIX DESIGN FOR REVIEW AND APPROVAL
- NOMINAL 2" JOINT AT CENTERLINE OF PIER SHALL BE FILLED WITH JOINT FILLER. SEAL JOINT WITH APPROVED SEALANT.



SECTION AT ABUTMENTS
(ALONG CL BEAMS)



SECTION AT PIERS
(ALONG CL BEAMS)

BRO-B071(10)

STATE OF MISSOURI
REGISTERED PROFESSIONAL ENGINEER
SPENCER N. JONES
NUMBER E-28676

Spencer N Jones
MO# PE-28676

GRA GREAT RIVER ASSOCIATES
2008 S. MORGAN HILL ROAD, SPRINGFIELD, MO 65804
PHONE: (417) 886-7171 FAX: (417) 886-7591
www.graonline.com

Great River Associates, Inc. - Missouri State Certificate of Authority Number: 0000000000
Engineering: 2000-050895, Land Surveying: 2001011476, Landscape Architecture: 2007015673

No.	Revision/Issue	Date
1		
2		
3		
4		
5		

HARRISON ROAD BRIDGE #23900061 OVER STRAIGHT FORK CREEK
MORGAN COUNTY, MISSOURI

SLAB BEAM DETAILS

Copyright © 2014 by Great River Associates, Inc.

CHECKED BY: SJ
DRAWN BY: KFT
JOB NUMBER: 13-3263
FILE NAME: 13-3263_Civil
SCALE: NTS
ISSUE DATE: 01.22.2014
SHEET NUMBER: **S4**