

## ADDENDUM NO. 1

**ISSUED BY:** Great River Associates  
2826 S Ingram Mill Road  
Springfield, Missouri 65804  
(417) 886-7171  
(417) 886-7591 --- FAX

**DATE:** November 13, 2014

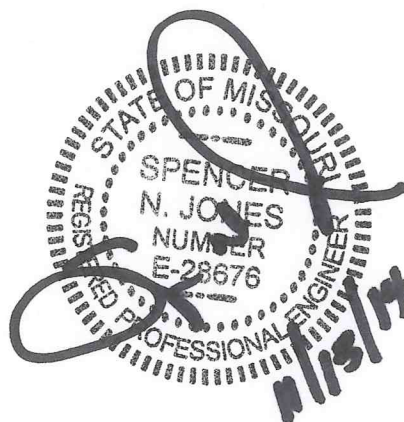
**FOR:** Washington County Bridge No. 06100321  
BRO – B110(9) over Furnace Creek

The attached revisions hereby supersede any and all data with which they may conflict as indicated on the Drawings, Specifications and related documents issued in the original set. Each trade is responsible for changes in its work caused by changes in the work of other trades. This addendum is a part of and shall be attached to the original set of plans and specifications for the work.

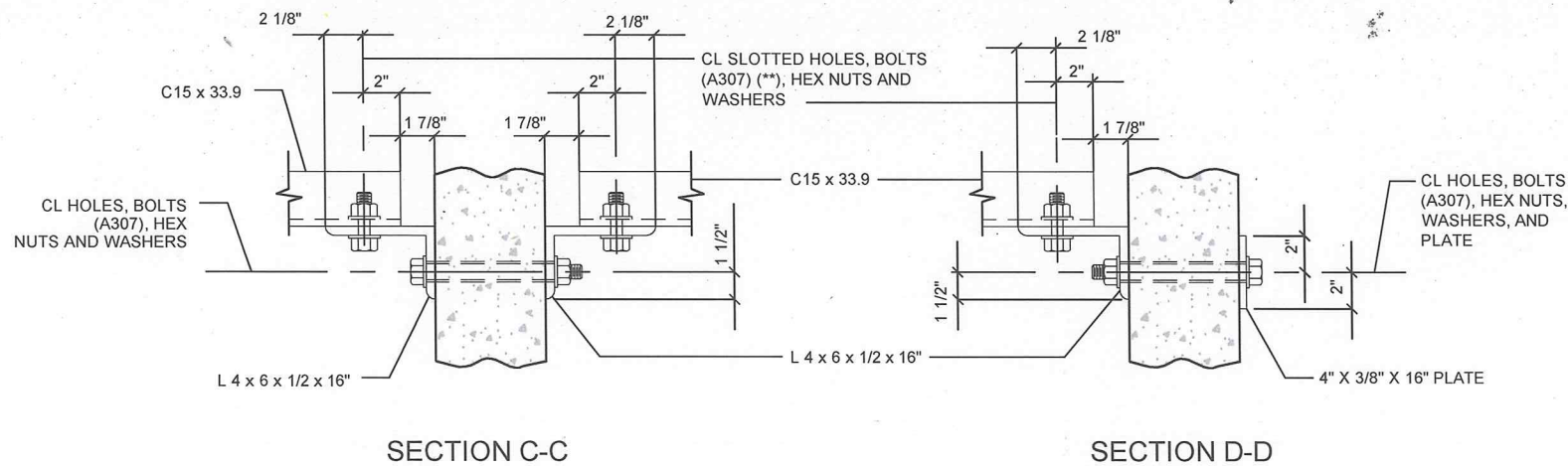
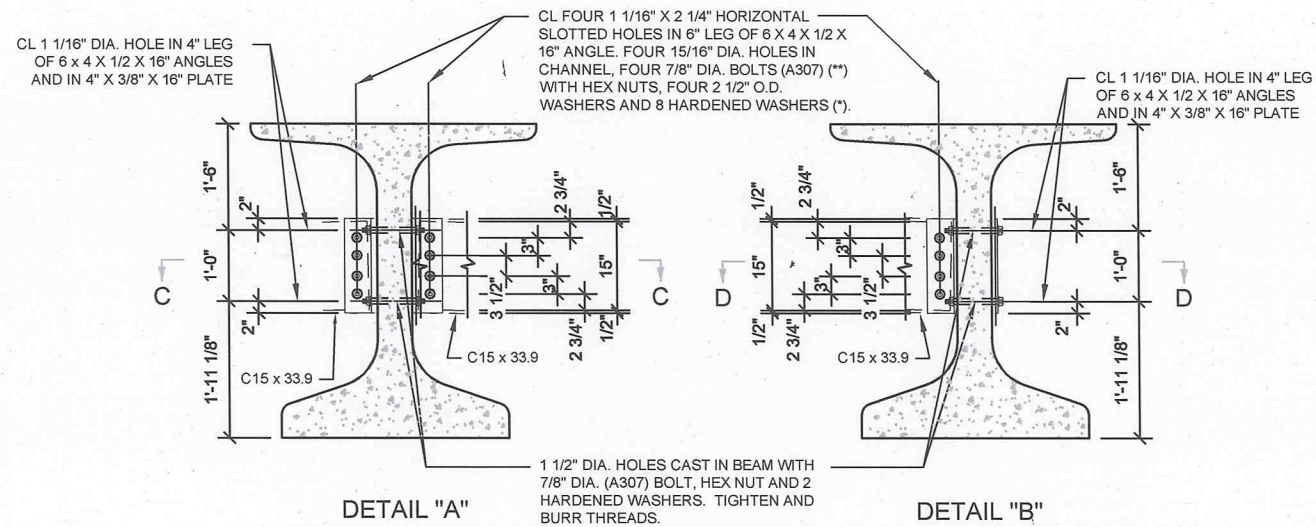
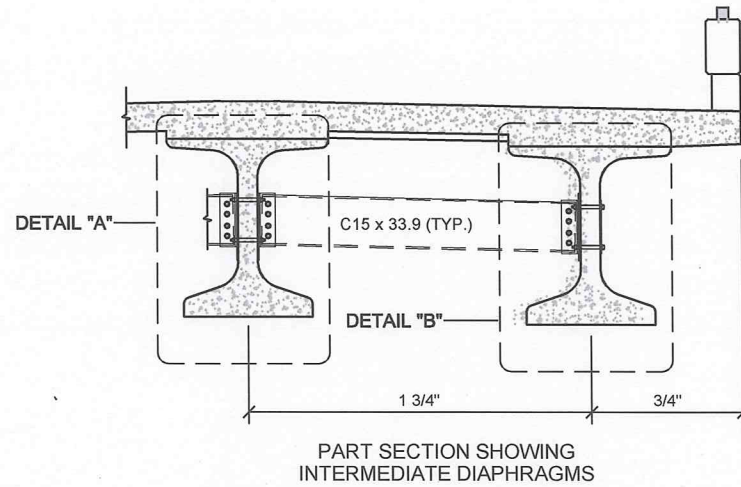
### Construction Plans

- Two notes were added on sheet S4
  - Payment for furnishing and installing steel intermediate diaphragms will be considered completely covered by the contract P/S girders.
  - Shop Drawings will not be required for steel intermediate diaphragms and angle connections

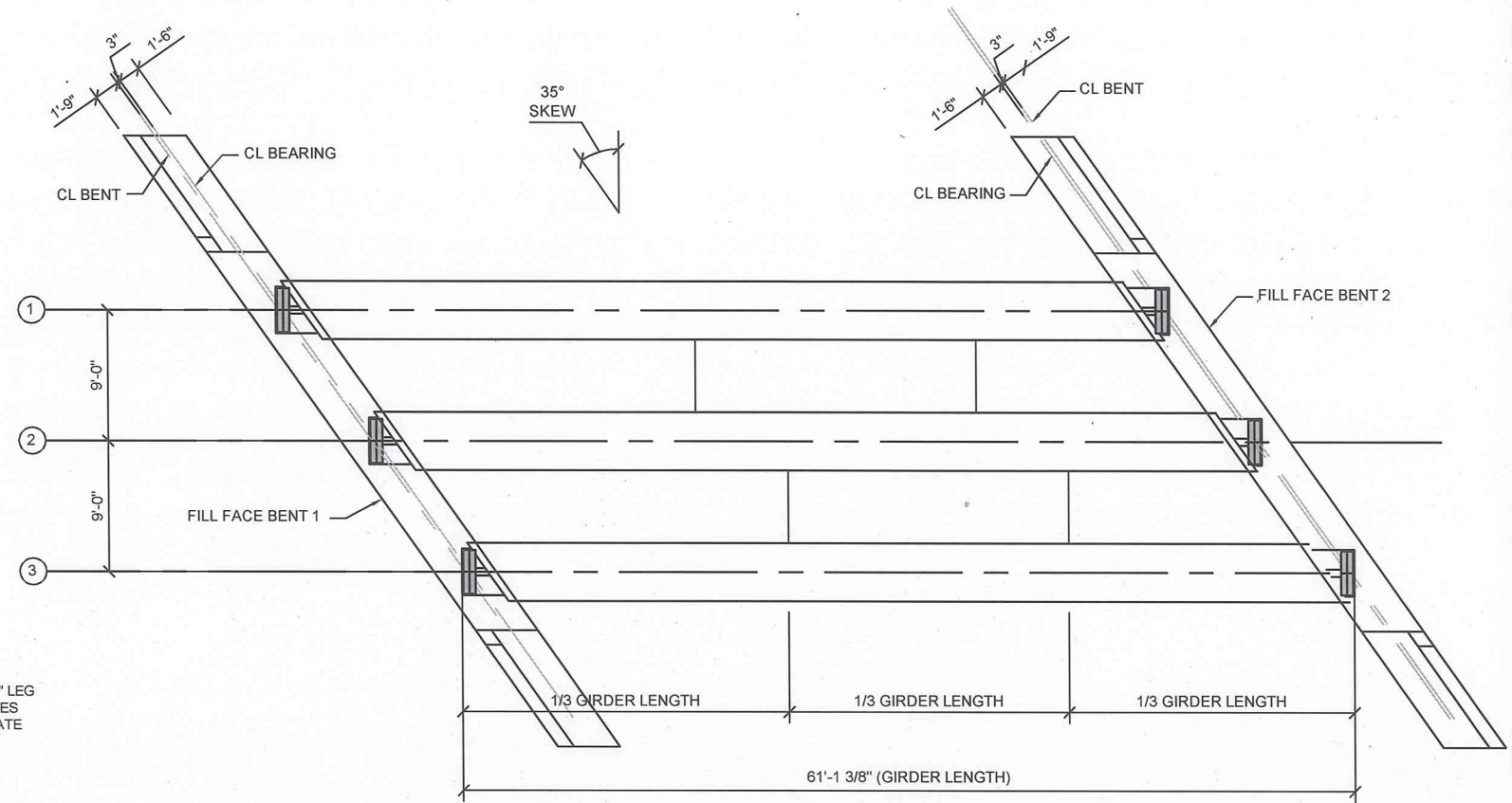
**Attachments:** Revised Sheet S4



END OF ADDENDUM No. 1



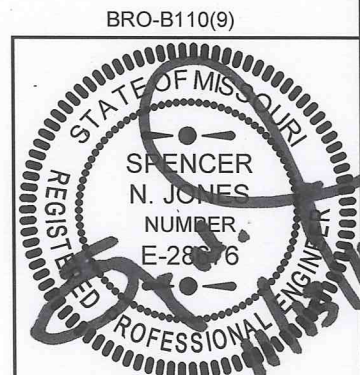
STEEL INTERMEDIATE DIAPHRAGM DETAILS



PART PLAN OF BRIDGE SHOWING GIRDER AND INTERMEDIATE DIAPHRAGM LAYOUT

#### STEEL DIAPHRAGM NOTES:

- (\*) IN LIEU OF 2 1/2" OUTSIDE DIAMETER WASHERS, CONTRACTOR MAY SUBSTITUTE A 3/16" (MIN. THICKNESS) PLATE WITH FOUR 15/16" DIA. HOLES AND ONE HARDENED WASHER PER BOLT.
- (\*\*) BOLTS SHALL BE TIGHTENED TO PROVIDE A TENSION OF ONE-HALF THAT SPECIFIED IN SEC 712 FOR HIGH STRENGTH BOLT INSTALLATION. A325 BOLTS MAY BE SUBSTITUTED FOR AND INSTALLED IN ACCORDANCE WITH THE REQUIREMENTS FOR THE SPECIFIED A307 BOLTS.
- ALL DIAPHRAGM MATERIALS INCLUDING BOLTS, NUTS, AND WASHERS SHALL BE GALVANIZED.
- FABRICATED STRUCTURAL STEEL SHALL BE ASTM A709 GRADE 36 EXCEPT AS NOTED.
- PAYMENT FOR FURNISHING AND INSTALLING STEEL INTERMEDIATE DIAPHRAGMS WILL BE CONSIDERED COMPLETELY COVERED BY THE CONTRACT UNIT PRICE FOR P/S CONCRETE GIRDERS.
- SHOP DRAWINGS WILL NOT BE REQUIRED FOR STEEL INTERMEDIATE DIAPHRAGMS AND ANGLE CONNECTIONS.



Spencer N Jones  
MO# PE-28676

FURNACE CREEK ROAD BRIDGE #06100321  
WASHINGTON COUNTY, MISSOURI

INTERMEDIATE DIAPHRAGM LAYOUT & DETAILS



No.	Revision/Issue	Date
1	ADDED STEEL DIAPHRAGM NOTES 5 & 6	11-13-2014
2		
3		
4		
5		
6		

CHECKED BY: SJ
DRAWN BY: KFT
JOB NUMBER: 13-3281
FILE NAME: 13-3281_Structural
SCALE: NTS
ISSUE DATE: 08.08.2014
SHEET NUMBER: S4

NOTE: THIS DRAWING IS NOT TO SCALE. FOLLOW DIMENSIONS.