

Steven V. Stenger  
County Executive

Saint Louis  
**COUNTY**  
**HIGHWAYS & TRAFFIC**  
**PUBLIC WORKS**

Stephanie Leon Streeter, P.E.  
Acting Director

February 19, 2015

**ADDENDUM NO. 1**

Notice to All Persons and Firms Proposing  
to Submit a Bid or Furnish Materials for  
Brentwood Boulevard Infrastructure  
St. Louis County Project No. AR-1523  
Federal Project No. STP-5577(633)

The construction contract for this project has been revised as follows:

No. 1

**Add** "Itemized Bid Sheets" to the Bid Documents.

No. 2

**Delete** Plan Sheets No. 2 and 3.

No. 3

**Insert New** Plan Sheets No. 2A and 3A.


No. 4

**Delete** Plan Sheets No. 14 through 23.

No. 5

**Insert New** Plan Sheets No. 14A through 23A.

**ATTENTION BIDDERS: CHECK THE ADDENDUM ACKNOWLEDGEMENT IN THE  
BID DOCUMENTS AND COMPLETE APPROPRIATELY.**

  
Daniel R. Naunheim, P.E.  
Division Manager, Design

DRN/ZH/jlh

*Attachments: Itemized Bid Sheets, Plan Sheets and Addendum Acknowledgement (Please sign  
and return.)*

Highways & Traffic: 1050 North Lindbergh Boulevard • Saint Louis, MO 63132 • 314/615-8504 • FAX 314/615-8194  
Public Works: 41 South Central Avenue • Saint Louis, MO 63105 • 314/615-5184 • FAX 314/615-7085  
Internet: <http://www.stlouisco.com> • TTY: 314/615-5889

bcc: Matt Gruendler

SUMMARY OF QUANTITIES		BRENTWOOD BOULEVARD INFRASTRUCTURE ST. LOUIS COUNTY PROJECT NO. AR-1523 FEDERAL PROJECT NO. STP-5577(633)				
SUBTOTAL	PROJECT TOTAL	UNIT	ITEM NO.	DESCRIPTION	REMARKS	
<b>ROADWAY ITEMS</b>						
1	1	L.S.	202-20.10	REMOVAL OF IMPROVEMENTS	Not shown on B sheets.	
950.1	950.1	S.Y.	202-22.30	REMOVAL OF RIGID PAVEMENT		
433.4	455.1	C.Y.	203-10.00	CLASS "A" EXCAVATION	Includes 5% extra for contingency.	
1	1	L.S.	203-10.30	LAND DISTURBANCE PERMIT		
3901.7	4096.8	S.Y.	304-05.04	TYPE 5 AGGREGATE BASE (4" Thick)	Includes 5% extra for contingency.	
4567.0	4795.4	TON	404-09.09	SUPERPAVE ASPHALTIC CONCRETE MIXTURE SP95 (PG76-22)C	Includes 5% extra for contingency. Est. at 1" and 0.0574 Ton/SY/Inch	
6293.8	6608.5	TON	404-12.72	SUPERPAVE ASPHALTIC CONCRETE MIXTURE SP125 (PG76-22)CLP	Includes 5% extra for contingency. Est. at 1.5" and 0.0574 Ton/SY/Inch	
1325.2	1391.5	TON	405-30.10	TYPE "C" BITUMINOUS CONCRETE (PAVEMENT)	Includes 5% extra for contingency.	
100.0	105.0	TON	405-30.20	TYPE "D" BITUMINOUS CONCRETE (PAVEMENT)	Includes 5% extra for contingency.	
726.1	726.1	S.Y.	405-30.25	ASPHALT PAVEMENT REPAIR		
6,751	7088.6	GAL	407-10.27	TACK-EMULSIFIED ASPHALT (SS-1H)	Includes 5% extra for contingency. Est. at 0.05 Gal/SY	
88,100	88,100	S.Y.	412-10.04	PAVEMENT SURFACING AND TEXTURING (0" to 4"), CONCRETE OR ASPHALT		
157.0	157.0	S.Y.	502-99.98	REMOVE AND REPLACE CONCRETE PAVEMENT (8" REINFORCED), INCLUDES CURB		
42.7	42.7	S.Y.	509-12.08	CONCRETE BASE (8" REINFORCED)		
50.0	50.0	S.Y.	509-12.38	CONCRETE BASE (8" REINFORCED), VERY EARLY STRENGTH		
3	3	EACH	603-10.35	ADJUST WATER SERVICE VALVE BOX TO GRADE		
3	3	EACH	604-20.26	ADJUST GRATE INLET TO GRADE		
91	91	EACH	604-20.30	ADJUSTING MANHOLE TO GRADE		
7	7	EACH	604-90.40	ADJUST INLET STONE TO GRADE		
8	8	EACH	604-90.50	REPLACE PRECAST INLET STONE AND ADJUST TO GRADE		
6	6	EACH	604-90.52	REPLACE INLET SILL		
6	6	EACH	604-90.55	REPLACE INLET LID		
340.6	340.6	S.Y.	608-10.90	REMOVE AND REPLACE CONCRETE MEDIAN/ISLAND		
16.7	16.7	S.Y.	608-50.96	REMOVE AND REPLACE PAVED APPROACH (6")		
181.0	181.0	S.Y.	608-50.97	REMOVE AND REPLACE PAVED APPROACH (7")		
1,288.0	1288.0	L.F.	609-10.93	REMOVE AND REPLACE CURB AND GUTTER (VARIOUS WIDTHS), VERTICAL/MOUNTABLE	Sawcutting, excavating and aggregate base are all incidental.	
300.0	300.0	L.F.	609-20.11	INTEGRAL CURB (6" HEIGHT AND UNDER)		
1,912.0	1912.0	L.F.	609-20.90	REMOVE AND REPLACE INTEGRAL CURB (6" HEIGHT AND UNDER)		
73.0	73.0	L.F.	609-30.10	ASPHALT CURB		
1	1	L.S.	612-30.10	STANDARD TRAFFIC CONTROL DEVICES	Not shown on B sheets.	
8	8	EACH	612-60.92	ARROW PANEL, TYPE "B" (NOISELESS), RENTAL	Not shown on B sheets.	
75.0	75.0	S.Y.	613-10.91	JOINT REPAIR - TRANSVERSE, VERY EARLY STRENGTH		
75.0	75.0	S.Y.	613-20.20	JOINT REPAIR - LONGITUDAL, VERY EARLY STRENGTH		
1	1	L.S.	619-00.00	MOBILIZATION	Not shown on B sheets.	
422.0	422.0	S.Y.	803-20.00	STRIP SODDING		
1	1	L.S.	806-45.00	INLET PROTECTION DEVICE	Not shown on B sheets.	
<b>TRAFFIC SIGNAL ITEMS</b>						
9	9	EACH	904-24.01	SIGNAL HEAD, TYPE 1S, PEDESTRIAN		
1	1	EACH	904-27.15	POST, SIGNAL, W/SQ. PEDESTAL BASE, 15' TOTAL HEIGHT, ALUMINUM		
26	26	EACH	904-28.07	POST, SIGNAL, W/SQ PEDESTAL BASE, 7' MAXIMUM HEIGHT, ALUMINUM		
33	33	EACH	904-49.20	DETECTOR, PEDESTRIAN PUSH BUTTON, FREEZEPROOF		
310	310	L.F.	904-52.00	CONDUIT, 2"		
1	1	EACH	904-74.99	CONDUIT REPAIR (LOCATE BROKEN CONDUIT, EXCAVATE, REMOVE EXISTING CABLE, REPAIR/REPLACE CONDUIT, REINSTALL CABLE, BACKFILL AND RESTORE) (DOES NOT INCLUDE SIDEWALK OR PAVEMENT REMOVAL AND REPLACEMENT)		
330	330	L.F.	904-83.05	CABLE, SIGNAL, #14 GAUGE, 5 CONDUCTOR		
550	550	L.F.	904-84.00	WIRE, STRANDED GROUND, #6 GAUGE		
4,339.0	4,339.0	L.F.	904-85.05	CABLE, DETECTOR LOOP, #14 GAUGE, 1 CONDUCTOR, W/TUBE JACKET (IN 3/4" CONDUIT AND PULL BOXES)		
24336.0	24336.0	L.F.	904-85.06	CABLE, DETECTOR LOOP, #14 GAUGE, 1 CONDUCTOR, W/TUBE JACKET (IN SAWED SLOT)		
4360.0	4360.0	L.F.	904-85.18	CABLE, PUSH BUTTON AND/OR DETECTOR LOOP LEAD-IN, #18 GAUGE, 2 CONDUCTOR (SHIELDED)		
6	6	EACH	904-90.17	PREFORMED PULL BOX (17"W X 30"L X 26"MIN.H), REINFORCED POLYMER CONCRETE W/1' CONCRETE APRON		
26	26	EACH	904-91.43	BASE, TYPE P-3, CONCRETE		
1	1	EACH	904-91.73	BASE, TYPE C-3, CONCRETE		
26	26	EACH	904-95.10	OPENING DRILLED IN EXISTING CONCRETE PULL BOX		
17	17	EACH	904-95.31	ADJUSTMENT OF PREFORMED PULL BOX		
12	12	EACH	904-95.40	ADJUSTMENT OF CONCRETE PULL BOX		
14	14	EACH	904-95.42	ADJUSTMENT OF CONCRETE DOUBLE PULL BOX		
5	5	EACH	904-98.60	RELOCATION OF EXISTING PUSH BUTTON		
<b>PEDESTRIAN AND BICYCLE ITEMS</b>						
1	1.0	L.S.	201-20.11	CLEARING VEGETATION FROM THE PEDESTRIAN ACCESS ROUTE	Not shown on B sheets.	
20	20	EACH	412-20.00	SIDEWALK GRINDING		
127	127	EACH	608-60.08	CONCRETE SIDEWALK, CURB RAMP		
1,036.3	1036.3	S.Y.	608-60.94	REMOVE AND REPLACE CONCRETE SIDEWALK (4" THICK)		
18.8	18.8	S.Y.	608-60.96	REMOVE AND REPLACE CONCRETE SIDEWALK (6" THICK)		
130.0	130.0	S.F.	608-60.99	TRUNCATED DOMES FOR CURB RAMPS (Retrofit Construction)		

COUNTY PROJECT NO. AR-1523  
 FEDERAL PROJECT NO. STP-5577(633)  
 E-W GATEWAY TIP NO. 6339-15  
 MSD: N/A  
 MSD BASE MAP: 20K, 21K

REV	DATE	BY	APP	DESCRIPTION
1		ZH		ADDENDUM NO. 1

DISCLAIMER OF RESPONSIBILITY: I hereby certify that I am a duly licensed Professional Engineer in the State of Missouri, and I am authorized to seal and sign the drawings, reports, and estimates prepared by me or under my direct supervision. I am not responsible for any errors or omissions in the drawings, reports, or estimates prepared by others who are not under my direct supervision. I am not responsible for any errors or omissions in the drawings, reports, or estimates prepared by others who are not under my direct supervision.

JOSEPH W. KULESSA  
 AT-LARGE  
 PE 2010090841  
 PROFESSIONAL ENGINEER

DATE: 2/19/2015

PREPARED BY:  
 DESIGN DIVISION  
 121 SOUTH MERAMEC AVENUE  
 7TH FLOOR  
 CLAYTON, MISSOURI 63105  
 (314) 616-6643  
 JOSEPH W. KULESSA  
 PROFESSIONAL ENGINEER  
 LICENSE NO. 2010090841

Sheryl L. Hodges, D.E., P.E., LPC  
 PUBLIC WORKS  
 HIGHWAYS & TRAFFIC  
 Director

BRENTWOOD BOULEVARD  
 INFRASTRUCTURE  
 SUMMARY OF QUANTITIES

DESIGNED: Z. HALILOVIC  
 DRAWN: Z. HALILOVIC  
 CHECKED: J.W. KULESSA  
 SHEET SEQUENCE: 2A OF 48

202-22.30 REMOVAL OF RIGID PAVEMENT			
As directed by the Engineer.			
LOCATION	QUANTITY S.Y. (0.1)	REMARKS	
Brentwood Boulevard/Eager Road	793.1	For 8" concrete base repair	
	157.0	For removal of 8" concrete pavement	
<b>TOTAL</b>	<b>950.1</b>		

203-10.00 CLASS "A" EXCAVATION			
For base repairs, shoulder repairs, R&R 7" & 8" concrete pavement, and R&R 6" sidewalk.			
LOCATION	QUANTITY C.Y.(0.1)	REMARKS	
Post Office on Brentwood Blvd.	12.4	For base repair, 42' X 24'	
Brentwood at Rosalie Avenue	3.0	For base repair, 12' X 20'	
Brentwood at vacant lot	2.3	For base repair, 14' X 13'	
Brentwood at Brentwood Place	3.3	For base repair, 9' X 10'	
2120 Brentwood Boulevard	1.5	For base repair, 10' X 12' (Mobil On The Run)	
2220 Brentwood Boulevard	9.9	For base repair, 67' X 12'	
2010 Brentwood Boulevard	1.6	For base repair, 14' X 9'	
North RR Tracks	2.3	For base repair, 31' X 6'	
South RR Tracks	3.0	For base repair, 11' X 22'	
2818 Brentwood Boulevard	0.4	For base repair, 6' X 6'	
2732 Brentwood Boulevard	0.4	For base repair, 6' X 6'	
Across from YMCA	0.4	For base repair, 6' X 6'	
Brentwood at Lawn Avenue	1.0	For base repair, 8' X 10'	
Brentwood at Pine Avenue	0.5	For base repair, 13' X 13'	
2119 Brentwood Boulevard	0.7	For base repair, 5' X 12'	
2223 Brentwood Boulevard	3.2	For base repair, 13' X 16'	
Brentwood at Bridgeport Avenue	6.5	For base repair, 44' X 12'	
2249 Brentwood Avenue	0.6	For base repair, 6' X 8'	
Brentwood at White Avenue	0.5	For base repair, 6' X 7'	
Brentwood Boulevard/Eager Road	34.6	Additional 8" concrete base repair, location to be determined by Engineer	
Brentwood Boulevard/Eager Road	218.7	For joint repair, location to be determined by Engineer	
Brentwood Boulevard/Eager Road	17.4	For removal and replacement of 8" concrete pavement, location to be determined by Engineer	
Brentwood Boulevard/Eager Road	37.8	For removal and replacement of concrete median, location to be determined by Engineer	
Brentwood Boulevard/Eager Road	23.8	For removal and replacement of 6" & 7" paved approaches	
Brentwood Boulevard	2.2	For removal and replacement of 6" sidewalk	
Brentwood Boulevard/Eager Road	45.4	For additional repairs as determined by Engineer	
<b>TOTAL</b>	<b>433.4</b>		

304-05.04 TYPE 5 AGGREGATE BASE (4" THICK)			
For use under 6" & 7" concrete pavement, 7" curb ramps, 6" sidewalks & bus stop pads, paved approaches, and concrete medians.			
LOCATION	QUANTITY S.Y.(0.1)	REMARKS	
Post Office on Brentwood Blvd.	112.0	For base repair, 42' X 24'	
Brentwood at Rosalie Avenue	26.7	For base repair, 12' X 20'	
Brentwood at vacant lot	20.2	For base repair, 14' X 13'	
Brentwood at Brentwood Place	10.0	For base repair, 9' X 10'	
2120 Brentwood Boulevard	13.3	For base repair, 10' X 12' (Mobil On The Run)	
2220 Brentwood Boulevard	89.3	For base repair, 67' X 12'	
2010 Brentwood Boulevard	14.0	For base repair, 14' X 9'	
North RR Tracks	20.7	For base repair, 31' X 6'	
South RR Tracks	26.9	For base repair, 11' X 22'	
2818 Brentwood Boulevard	4.0	For base repair, 6' X 6'	
2732 Brentwood Boulevard	4.0	For base repair, 6' X 6'	
Across from YMCA	4.0	For base repair, 6' X 6'	
Brentwood at Lawn Avenue	8.9	For base repair, 8' X 10'	
Brentwood at Pine Avenue	18.8	For base repair, 13' X 13'	
2119 Brentwood Boulevard	6.7	For base repair, 5' X 12'	
2223 Brentwood Boulevard	23.1	For base repair, 13' X 16'	
Brentwood at Bridgeport Avenue	58.7	For base repair, 44' X 12'	
2249 Brentwood Avenue	5.3	For base repair, 6' X 8'	
Brentwood at White Avenue	4.7	For base repair, 6' X 7'	
Brentwood Boulevard	323.6	For additional 8" concrete base repair, location to be determined by Engineer	
2440, 2944 Brentwood	10.2	R&R 6" sidewalk (2 locations)	
Brentwood at RR	8.0	R&R 6" sidewalk	
Brentwood Boulevard/Eager Road	157.0	For removal and replacement of 8" concrete pavement, location to be determined by Engineer	
Brentwood Boulevard/Eager Road	340.6	For removal and replacement of concrete median, location to be determined by Engineer	
Brentwood Boulevard/Eager Road	214.6	For removal and replacement of 6" & 7" paved approaches	
Brentwood Boulevard/Eager Road	1968.4	For joint repair, location to be determined by Engineer	
Brentwood Boulevard/Eager Road	408.0	For additional repairs as determined by Engineer	
<b>TOTAL</b>	<b>3901.7</b>		

404-09.09 SUPERPAVE ASPHALTIC CONCRETE MIXTURE SP95 (PG76-22)C				
Exact locations & quantities to be determined by the Engineer. Approximately 1" thick, estimated at 2.16 T/CY.				
LOCATION	FROM	TO	QUANTITY TON (0.1)	REMARKS
Brentwood Boulevard/Eager Road			4567.0	Location to be determined by Engineer
<b>TOTAL</b>			<b>4,567.0</b>	

404-12.76 SUPERPAVE ASPHALTIC CONCRETE MIXTURE SP125 (PG76-22)CLP				
Exact locations & quantities to be determined by the Engineer. Approximately 1.5" thick, estimated at 2.16 T/CY.				
LOCATION	FROM	TO	QUANTITY TON (0.1)	REMARKS
Brentwood Boulevard	E.o.M. at I-64	South of RR Tracks	5651.9	Mainline
			641.9	Additional locations to be determined by Engineer
<b>TOTAL</b>			<b>6,293.8</b>	

405-30.10 TYPE "C" BITUMINOUS CONCRETE (PAVEMENT)				
Exact locations & quantities to be determined by the Engineer. Estimated at 2.16 T/CY.				
LOCATION	FROM	TO	QUANTITY TON (0.1)	REMARKS
Brentwood Boulevard	E.o.M. at I-64	South of RR Tracks	595.0	For side streets, locations to be determined by Engineer
			12.3	Approach at Agnes Avenue
			16.6	Approach at Evans Avenue
			56.6	Approach at Wrenwood Lane
			42.5	Taper at Strassner Drive
			19.8	Approach at Lawn Avenue
			17.6	Approach at Pine Avenue
			24.6	Approach at Pine Avenue
			6.8	Approach at Moritz Avenue
			16.4	Approach at Brentwood Place
			7.5	Approach at Bridgeport Avenue
			13.2	Approach at Bridgeport Avenue
			23.9	Approach at White Avenue
			22.4	Approach at White Avenue
			17.0	Approach at Rosalie Avenue
			19.3	Approach at Harrison Avenue
			29.6	Approach at Eulalie Avenue
			15.4	Approach at Litzinger Road
			19.1	Approach at Madge Avenue
			20.0	Approach at Magdalen Avenue
			22.0	Approach at Powell Avenue
			3.3	Approach at Anna Avenue
			17.8	Approach at Pendelton Avenue
			19.7	Approach at Pendelton Avenue
			11.2	Approach at Russell Avenue
			100.0	For side streets, locations to be determined by Engineer
			156.0	For side streets, locations to be determined by Engineer
<b>TOTAL</b>			<b>1325.2</b>	

405-30.20 TYPE "D" BITUMINOUS CONCRETE (PAVEMENT)				
Exact locations & quantities to be determined by the Engineer. Estimated at 2.16 T/CY.				
LOCATION	FROM	TO	QUANTITY TON (0.1)	REMARKS
Brentwood Boulevard/Eager Road			50.0	Locations to be determined by Engineer
			50.0	Locations to be determined by Engineer
<b>TOTAL</b>			<b>100.0</b>	

405-30.25 ASPHALT PAVEMENT REPAIR				
Exact locations & quantities to be determined by the Engineer.				
LOCATION	FROM	TO	QUANTITY S.Y. (0.1)	REMARKS
Brentwood Boulevard/Eager Road			611.1	Locations to be determined by Engineer
			115.0	Locations to be determined by Engineer
<b>TOTAL</b>			<b>726.1</b>	

407-10.27 TACK-EMULSIFIED ASPHALT (SS-1H)				
Estimated at 0.10 Gal / S.Y.				
LOCATION	FROM	TO	QUANTITY GAL. (10)	REMARKS
Brentwood Boulevard/Eager Road			6,751	Locations to be determined by Engineer
<b>TOTAL</b>			<b>6,751</b>	

412-10.04 PAVEMENT SURFACING AND TEXTURING (0" to 4"), CONCRETE OR ASPHALT				
Approximately 2" depth. Includes butt joints and side streets as directed by the Engineer.				
LOCATION	FROM	TO	QUANTITY S.Y. (1.0)	REMARKS
Brentwood Boulevard/Eager Road			88,100	Locations to be determined by Engineer
<b>TOTAL</b>			<b>88,100</b>	

COUNTY PROJECT NO. AR-1523

FEDERAL PROJECT NO. STP-5577(633)

E-W GATEWAY TIP NO. 6339-15

MSD: N/A

MSD BASE MAP: 20K, 21K

REV	DATE	BY	DESCRIPTION
1	2/18	Z/H	ADDENDUM NO. 1

DISCLAIMER OF LIABILITY: I hereby certify that the information contained herein is true and correct to the best of my knowledge and belief, and I am not providing any warranty, express or implied, for the use of this information for any purpose other than that intended by the engineer. I am not responsible for any errors or omissions in this information, and I am not liable for any damages, including consequential damages, arising from the use of this information.

JOSEPH W. KULESSA  
PROFESSIONAL ENGINEER  
LICENSE NO. 2010000841

DATE: 2/19/2015

PREPARED BY: DESIGN DIVISION  
121 SOUTH MERAMEC AVENUE  
7TH FLOOR  
CLAYTON, MISSOURI 63105  
(314) 913-6646

JOSEPH W. KULESSA  
PROFESSIONAL ENGINEER  
LICENSE NO. 2010000841

Sheryl L. Hodges, D.E., P.E., LPG  
DIRECTOR

Saint Louis COUNTY  
HIGHWAYS & TRAFFIC  
PUBLIC WORKS

BRENTWOOD BOULEVARD INFRASTRUCTURE

DETAILED QUANTITIES 1 OF 8

DESIGNED: Z. HALILOVIC

DRAWN: Z. HALILOVIC

CHECKED: J.W. KULESSA

SHEET SEQUENCE: 3A OF 48

NOTE: MILL & OVERLAY ON BRENTWOOD BOULEVARD (CURB-CURB OR EDGE OF PAVEMENT-EDGE OF PAVEMENT). OTHER REPAIRS AS DETAILED ON QUANTITY SHEETS.

MATCHLINE SHEET 13

MATCHLINE SHEET 15

100'W R.R. RIGHT OF WAY  
(formerly the Creve Coeur Branch  
of the Missouri Pacific R.R.)

100'W R.R. RIGHT OF WAY  
(formerly the Creve Coeur Branch  
of the Missouri Pacific R.R.)

RUSSEL AVE.

SEE CURB RAMP DETAIL "C"

SEE CURB RAMP DETAIL "B"

S. BRENTWOOD BLVD.

ST. LOUIS PUBLIC SERVICE CO. R.R.

3021

3013

3021

2937

2929

2921

2915

2907

3000

2944

2932

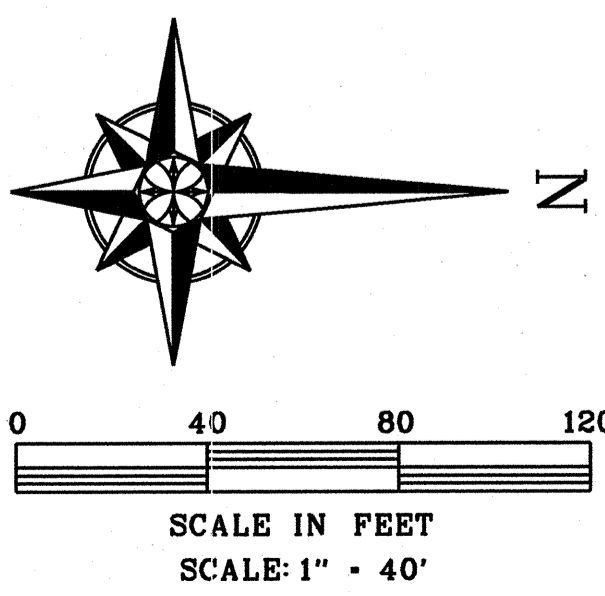
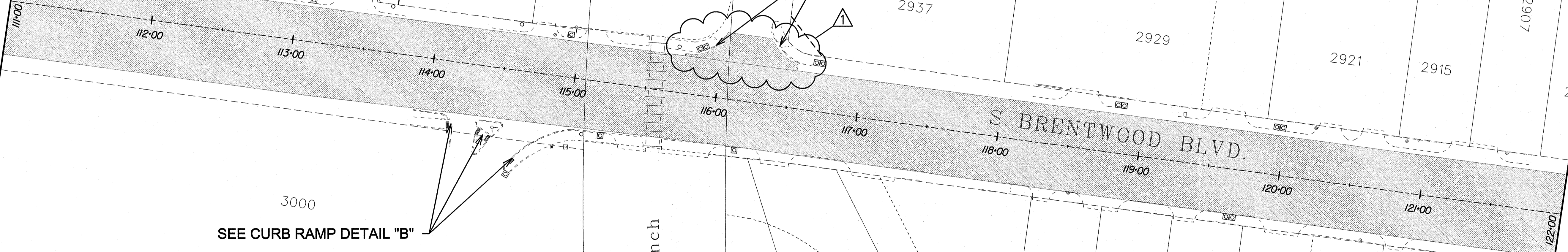
2928

2924

2914

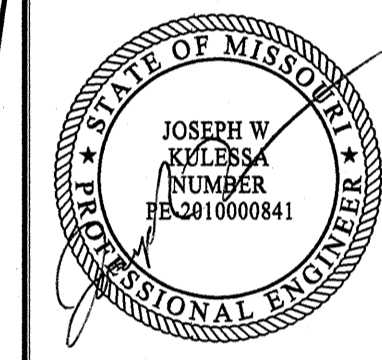
2912

2950



COUNTY PROJECT NO. <b>AR-1523</b>				
FEDERAL PROJECT NO. STP-6577(633)				
E-W GATEWAY TIP NO. 6339-15				
MSD:	N/A			
MSD BASE MAP: 20K, 21K				
REV	DATE	BY	APP	DESCRIPTION
1	2/18	ZH	JWK	ADDENDUM NO.1

DISCLAIMER OF LIABILITY  
I hereby certify that the documents intended to be authorized by my seal are my own work, and I hereby disclaim any responsibility for all other drawings, specifications, documents or instruments relating to or intended to be used for any part of the engineering project on survey.



DATE: 2/19/2015

PREPARED BY:  
DESIGN DIVISION  
121 SOUTH MERAMEC AVENUE  
7TH FLOOR  
CLAYTON, MISSOURI 63105  
(314) 616-8543

JOSEPH W. KULESSA  
P.L.L.C.  
LICENSE NO. 2810000841

**St. Louis County**  
**HIGHWAYS & TRAFFIC**  
**PUBLIC WORKS**  
Sheryl L. Hodges, D.E., P.E., LPG  
Director

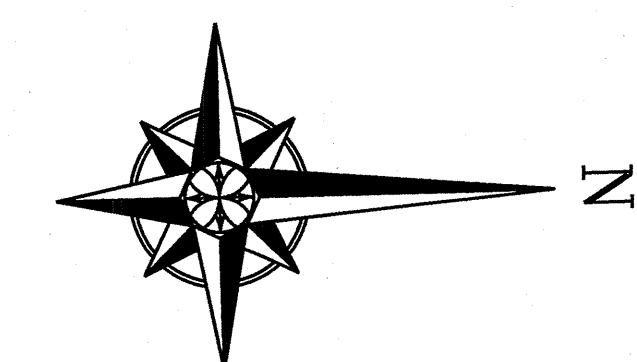
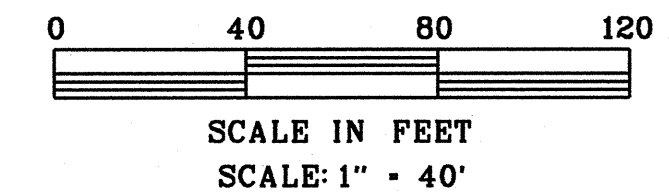
BRENTWOOD BOULEVARD  
INFRASTRUCTURE  
PLAN SHEET  
(2 OF 11)

DESIGNED:  
Z. HALILOVIC

DRAWN:  
Z. HALILOVIC

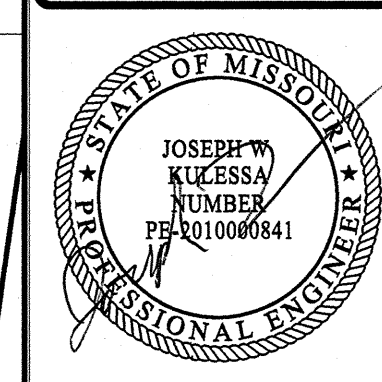
CHECKED:  
J.W. KULESSA

SHEET SEQUENCE:  
14A OF 48



COUNTY PROJECT NO. <b>AR-1523</b>	
FEDERAL PROJECT NO. STP-5577(633)	
E-W GATEWAY TIP NO. 6339-15	
MSD:	N/A
MSD BASE MAP: 20K, 21K	
REV	DATE
1	2/18
ZH	JWK
DESCRIPTION	
ADDENDUM NO.1	

RESUME OF WORK  
I hereby certify that the documents intended to be authorized by my seal are those shown on this sheet and I hereby disclaim any responsibility for all other drawings, specifications, documents or instruments relating to or intended to be used for any part of the engineering project or survey.



DATE: 2/19/2015

PREPARED BY:  
DESIGN DIVISION  
121 SOUTH MARINE AVENUE  
7TH FLOOR  
CLAYTON, MISSOURI 63105  
(314) 615-8543

JOSEPH W. KULESSA  
P.L.C. LICENSE NO. 201000841

**St. Louis County**  
**HIGHWAYS & TRAFFIC**  
**PUBLIC WORKS**

Sheryl L. Hodges, D.E., P.E., LPG  
Director

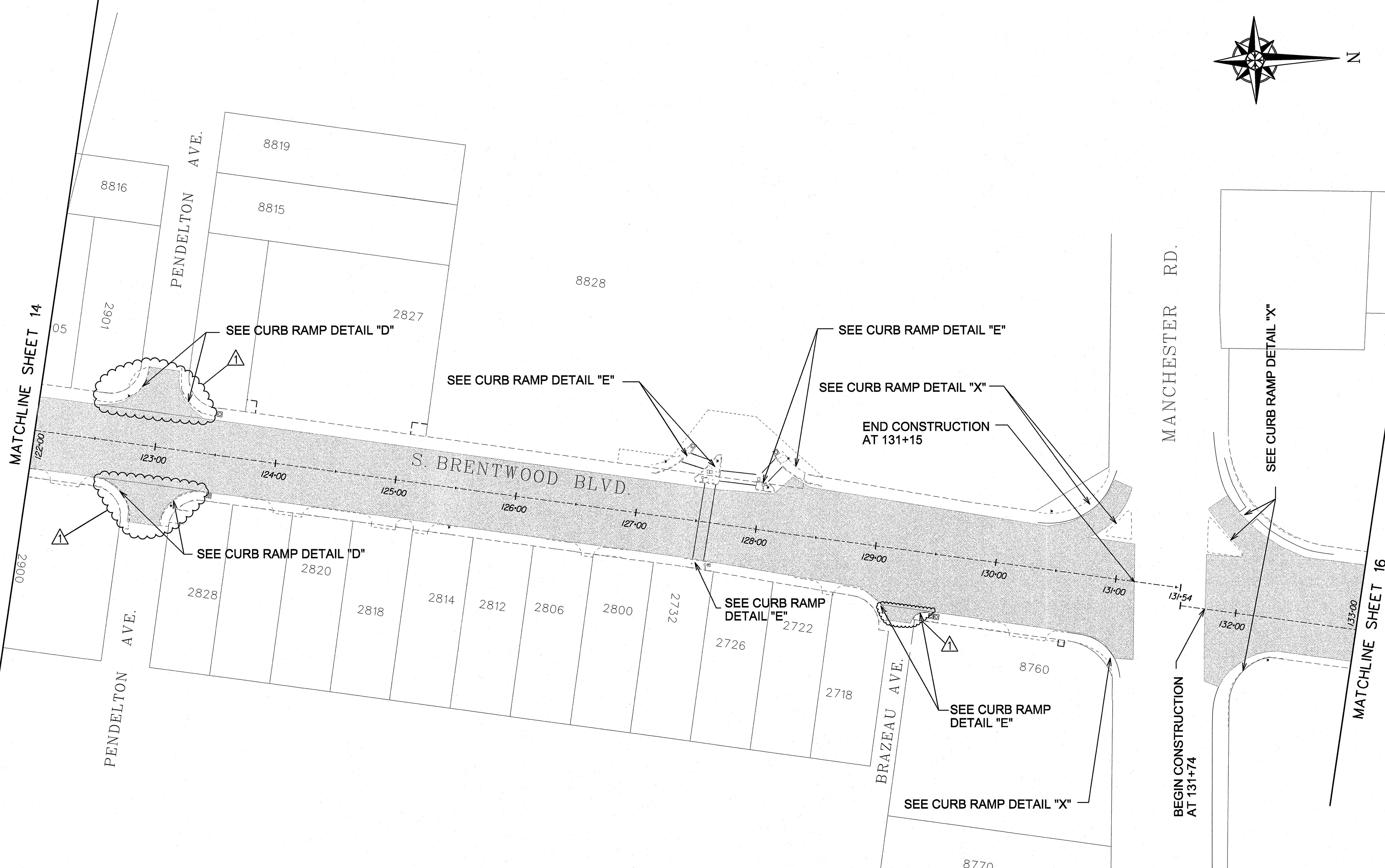
BRENTWOOD BOULEVARD  
INFRASTRUCTURE  
PLAN SHEET  
(3 OF 11)

DESIGNED:  
Z. HALILOVIC

DRAWN:  
Z. HALILOVIC

CHECKED:  
J.W. KULESSA

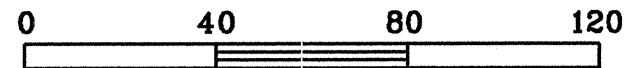
SHEET SEQUENCE:  
15A OF 48



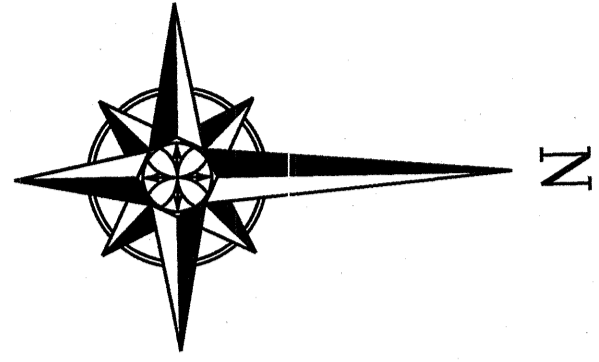
MATCHLINE SHEET 14

MATCHLINE SHEET 16

NOTE: MILL & OVERLAY ON BRENTWOOD BOULEVARD (CURB-CURB OR EDGE OF PAVEMENT-EDGE OF PAVEMENT). OTHER REPAIRS AS DETAILED ON QUANTITY SHEETS.



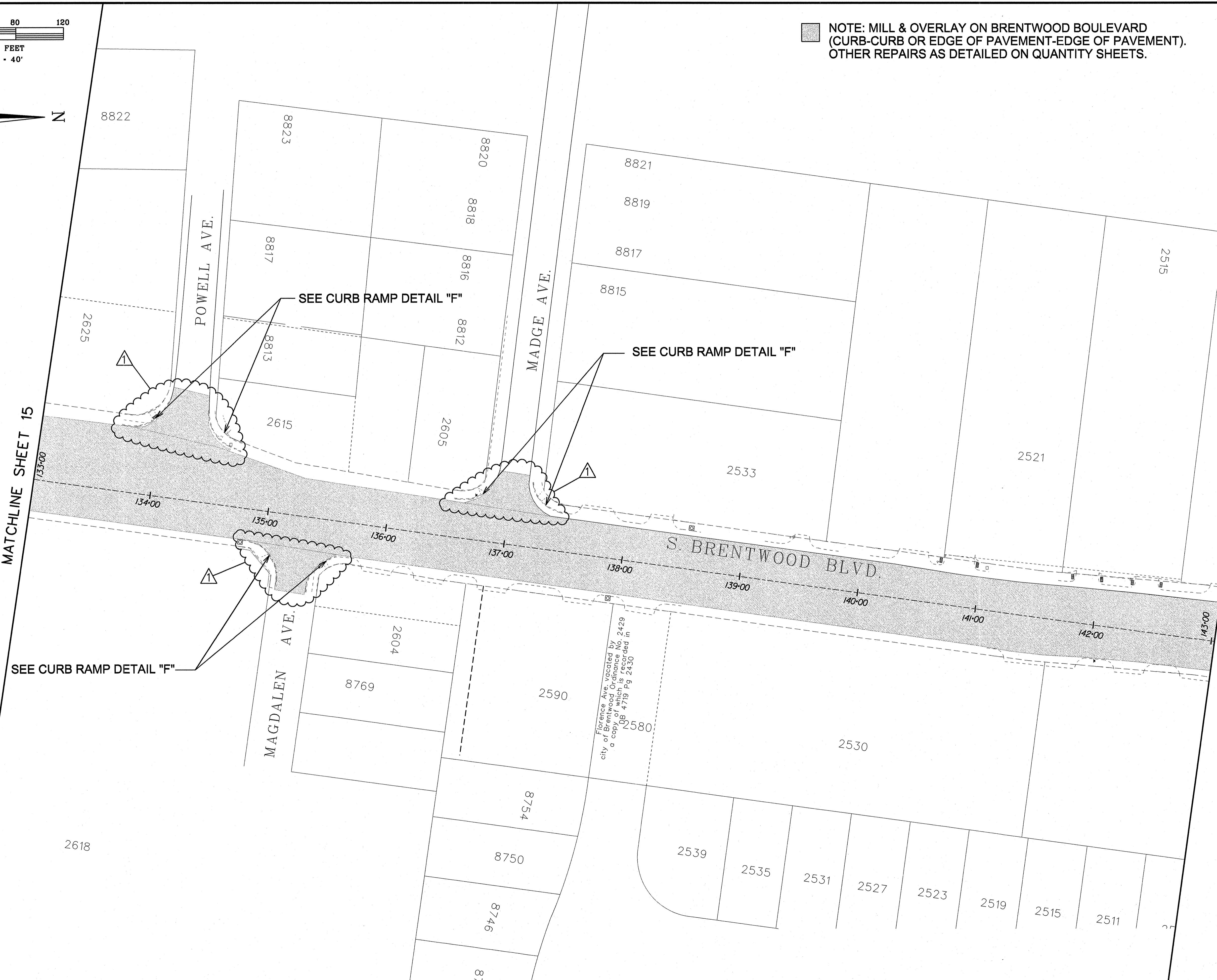
SCALE IN FEET  
SCALE: 1" = 40'



NOTE: MILL & OVERLAY ON BRENTWOOD BOULEVARD  
(CURB-CURB OR EDGE OF PAVEMENT-EDGE OF PAVEMENT).  
OTHER REPAIRS AS DETAILED ON QUANTITY SHEETS.

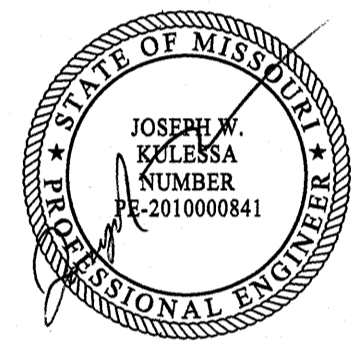
MATCHLINE SHEET 15

MATCHLINE SHEET 17



COUNTY PROJECT NO. <b>AR-1523</b>				
FEDERAL PROJECT NO. STP-5577(633)				
E-W GATEWAY TIP NO. 6339-15				
MSD:	N/A			
MSD BASE MAP: 20K, 21K				
REV	DATE	BY	APP	DESCRIPTION
1	2/18	ZH	JWK	ADDENDUM NO. 1

DESIGNER'S CERTIFICATION  
I hereby certify that the documents intended to be authorized by my seal are my own work and I hereby disclaim any responsibility for all other drawings, specifications, documents or instruments relating to or intended to be used for any part of the engineering project or survey.



DATE: 2/19/2015

PREPARED BY:  
DESIGN DIVISION  
121 SOUTH MERAMEC AVENUE  
7TH FLOOR  
CLAYTON, MISSOURI 63105  
(314) 615-8543

JOSEPH W. KULESSA  
PROFESSIONAL ENGINEER  
LICENSE NO. 2010000841

**St. Louis COUNTY**  
**HIGHWAYS & TRAFFIC**  
**PUBLIC WORKS**  
Sheryl L. Hodges, D.E., P.E., LPG  
Director

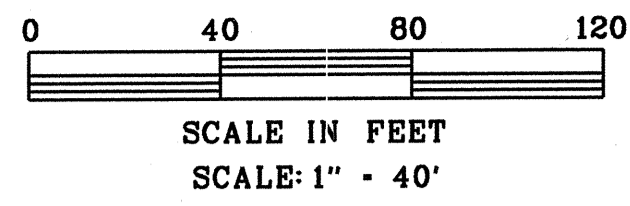
BRENTWOOD BOULEVARD  
INFRASTRUCTURE  
PLAN SHEET  
(4 OF 11)

DESIGNED:  
Z. HALILOVIC

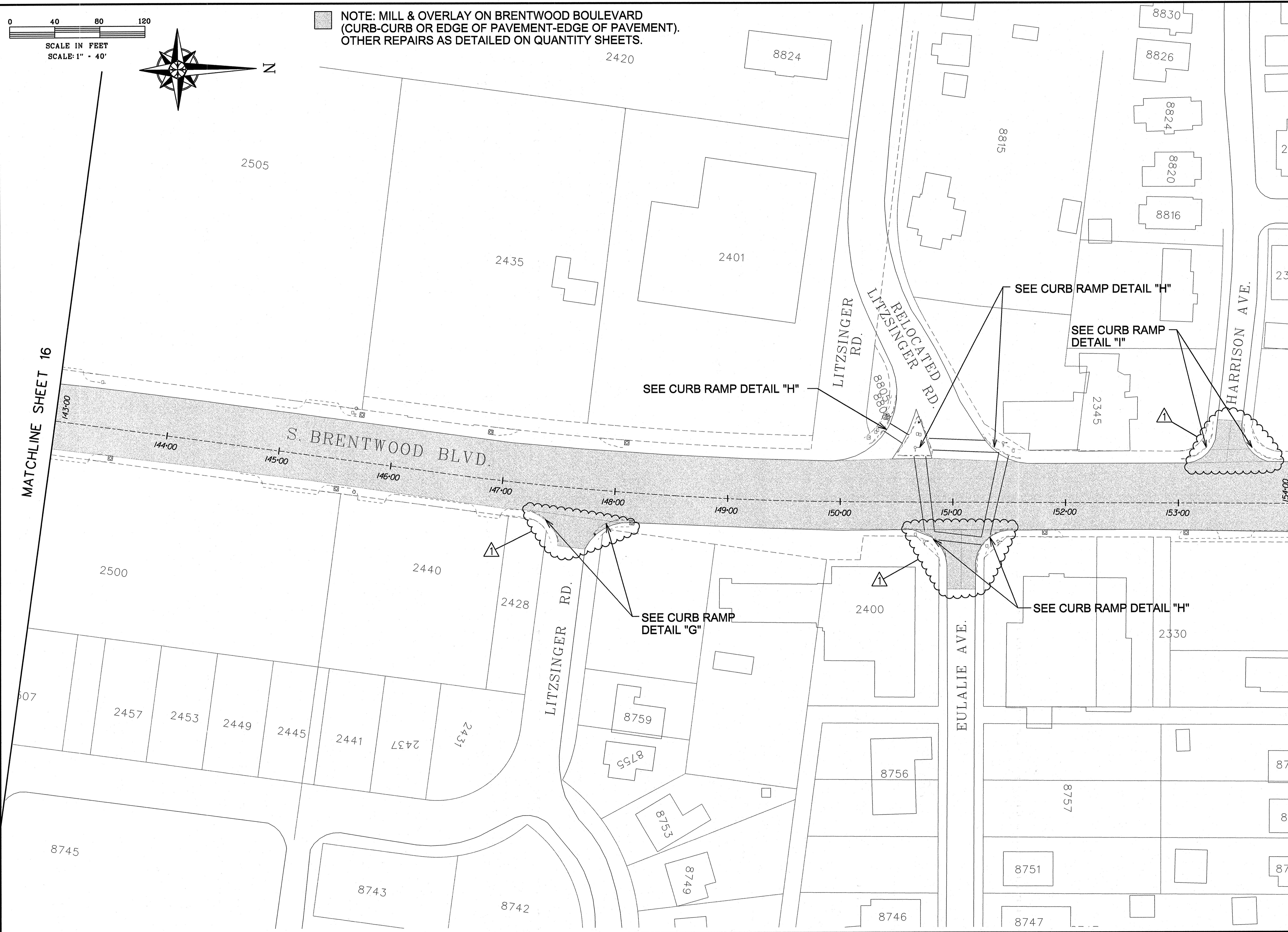
DRAWN:  
Z. HALILOVIC

CHECKED:  
J.W. KULESSA

SHEET SEQUENCE:  
16A OF 48



**NOTE: MILL & OVERLAY ON BRENTWOOD BOULEVARD  
(CURB-CURB OR EDGE OF PAVEMENT-EDGE OF PAVEMENT).  
OTHER REPAIRS AS DETAILED ON QUANTITY SHEETS.**

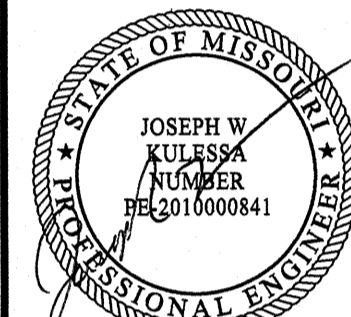


MATCHLINE SHEET 16

MATCHLINE SHEET 18

COUNTY PROJECT NO. <b>AR-1523</b>	
FEDERAL PROJECT NO. STP-5577(633)	
E-W GATEWAY TIP NO. 6339-15	
MSD:	N/A
MSD BASE MAP: 20K, 21K	
REV	DATE
1	2/18
BY	ZH JMK
DESCRIPTION ADDENDUM NO.1	

DISCLAIMER OF RESPONSIBILITY: The undersigned hereby certifies that the documents prepared by me or under my direct supervision and which I have authorized to be prepared by me or under my direct supervision are true and correct to the best of my knowledge and belief and that I am a duly licensed Professional Engineer in the State of Missouri. I accept full responsibility for all other drawings, reports or other documents prepared by me or under my direct supervision or those of my subordinates, employees, agents, or other representatives relating to or intended to be relied upon in connection with the engineering project or survey.



DATE: **2/19/2015**

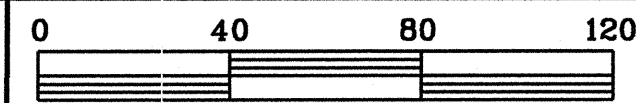
**PREPARED BY:**  
DESIGN DIVISION  
121 SOUTH MERAMEC AVENUE  
CLAYTON, MISSOURI 63105  
(314) 615-8643

**JOSEPH W. KULESSA**  
PROFESSIONAL ENGINEER  
LICENSE NO. 201000841

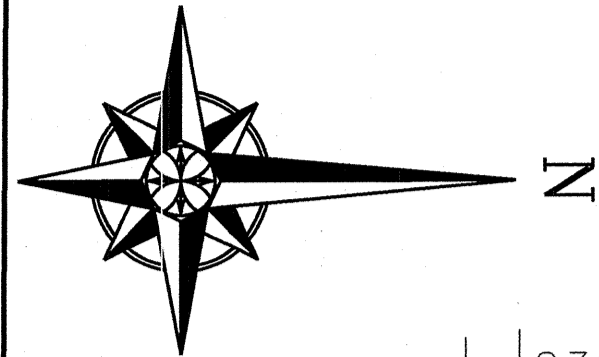
**St. Louis County**  
**HIGHWAYS & TRAFFIC**  
**PUBLIC WORKS**  
Sheryl L. Hodges, D.E., P.E., LPG  
Director

**BRENTWOOD BOULEVARD  
INFRASTRUCTURE  
PLAN SHEET  
(5 OF 11)**

DESIGNED:	Z. HALILOVIC
DRAWN:	Z. HALILOVIC
CHECKED:	J.W. KULESSA
SHEET SEQUENCE:	<b>17A OF 48</b>



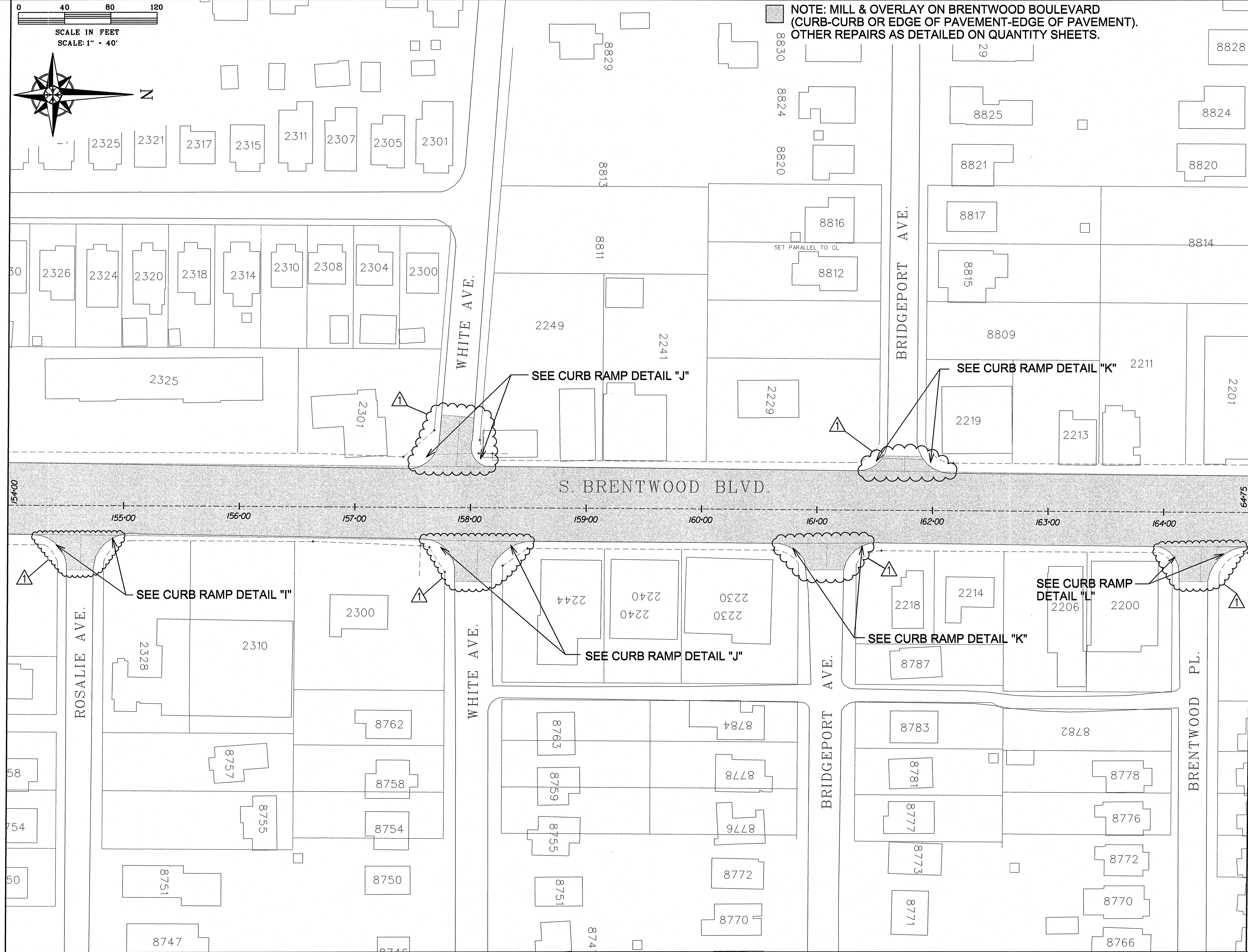
SCALE IN FEET  
SCALE: 1" = 40'



NOTE: MILL & OVERLAY ON BRENTWOOD BOULEVARD  
(CURB-CURB OR EDGE OF PAVEMENT-EDGE OF PAVEMENT).  
OTHER REPAIRS AS DETAILED ON QUANTITY SHEETS.

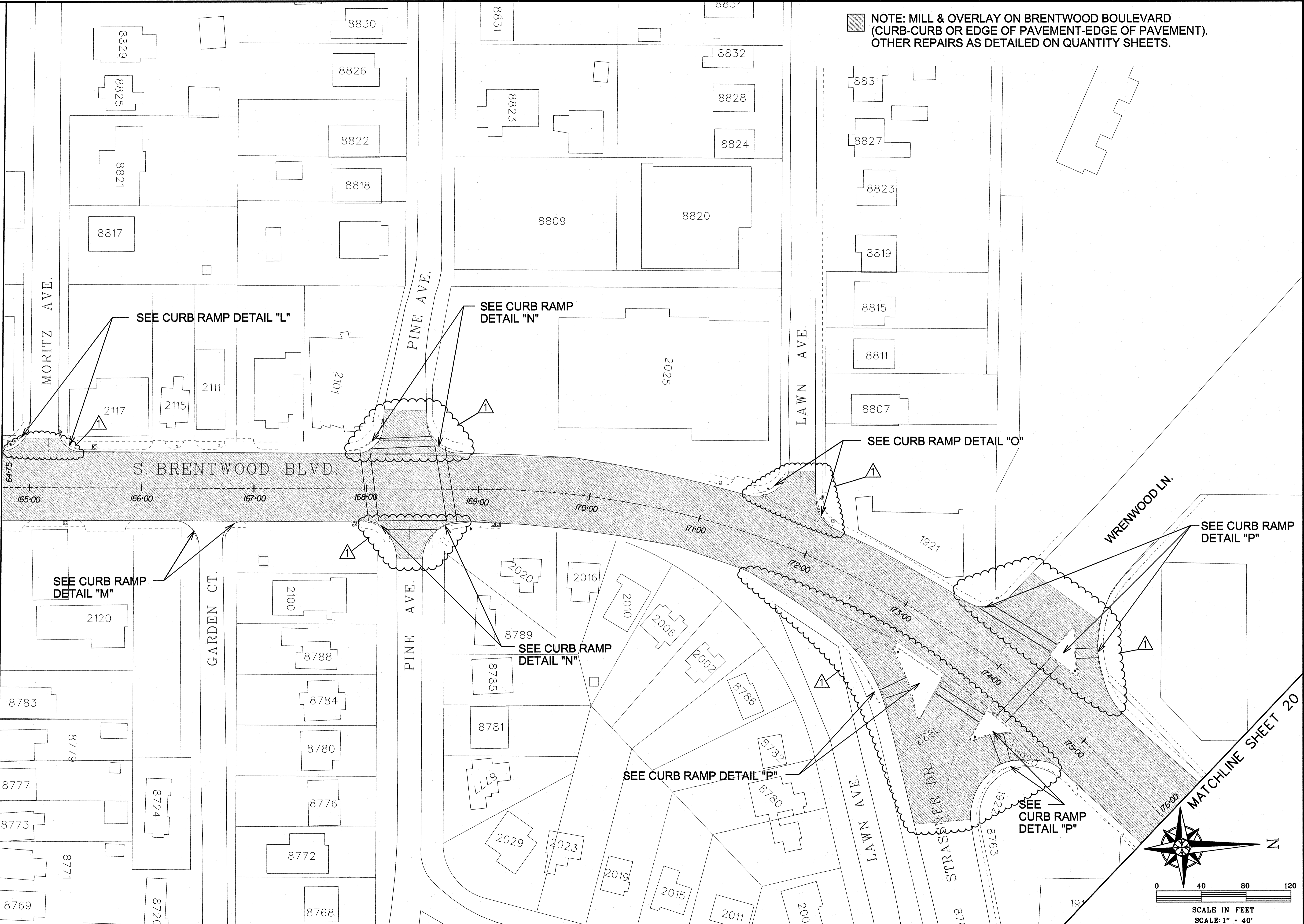
MATCHLINE SHEET 17

MATCHLINE SHEET 19



COUNTY PROJECT NO. <b>AR-1523</b>	
FEDERAL PROJECT NO. STP-5577(633)	
E-W GATEWAY TIP NO. 6339-15	
MSD:	N/A
MSD BASE MAP: 20K, 21K	
REVISIONS	DESCRIPTION
REV	DATE
BY	APP
DATE	DATE
1	1
2/18	ZH
1	JWK
ADDENDUM NO. 1	
<p>I hereby specify that the documents intended to be authorized by my seal are those shown on this sheet. I hereby disclaim any responsibility for all other drawings, reports, or documents or instruments relating to or intended to be used for any part of the engineering project or survey.</p>	
DATE: 2/19/2015	
PREPARED BY: DESIGN DIVISION 121 SOUTH MERAMEC AVENUE 7TH FLOOR CLAYTON, MISSOURI 63105 (314) 615-8543 JOSEPH W. KULESSA PROFESSIONAL ENGINEER LICENSE NO. 201000841	
BRENTWOOD BOULEVARD INFRASTRUCTURE PLAN SHEET (6 OF 11)	
DESIGNED: Z. HALILOVIC	
DRAWN: Z. HALILOVIC	
CHECKED: J.W. KULESSA	
SHEET SEQUENCE: 18A OF 48	

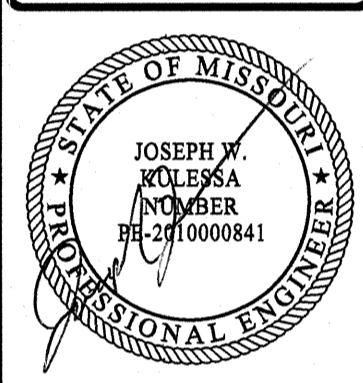




NOTE: MILL & OVERLAY ON BRENTWOOD BOULEVARD (CURB-CURB OR EDGE OF PAVEMENT-EDGE OF PAVEMENT). OTHER REPAIRS AS DETAILED ON QUANTITY SHEETS.

COUNTY PROJECT NO.		AR-1523
FEDERAL PROJECT NO.		STP-5577(633)
E-W GATEWAY TIP NO.		6339-15
MSD:		N/A
MSD BASE MAP:		20K, 21K
REVISIONS	DESCRIPTION	ADDENDUM NO.1
REV DATE	BY	JWK
1	2/18	ZH

DISCLAIMER OF RESPONSIBILITY: I hereby specify that the documents intended to be prepared by me or under my direct supervision and control, and I hereby disclaim any responsibility for all other documents or instruments prepared by or for me or under my direct supervision or control, or for any errors or omissions in any engineering project or survey.



DATE: 2/19/2015

PREPARED BY:  
 DESIGN DIVISION  
 121 SOUTH MERAMEC AVENUE  
 7TH FLOOR  
 CLAYTON, MISSOURI 63105  
 (314) 616-8593  
 JOSEPH W. KULESSA  
 PROFESSIONAL ENGINEER  
 LICENSE NO. 2010000841

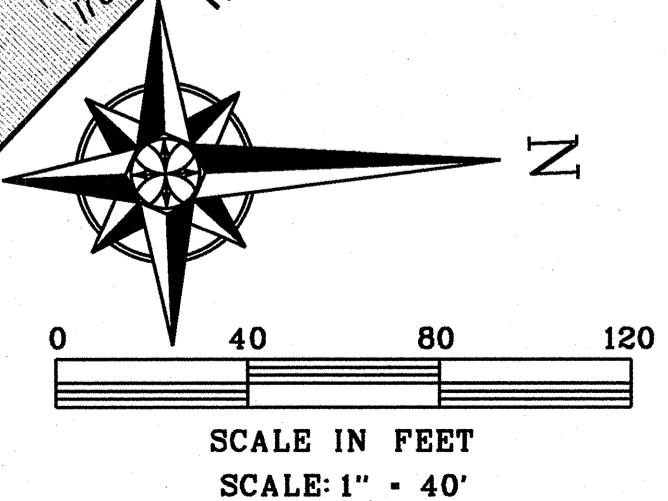


BRENTWOOD BOULEVARD  
 INFRASTRUCTURE  
 PLAN SHEET  
 (7 OF 11)

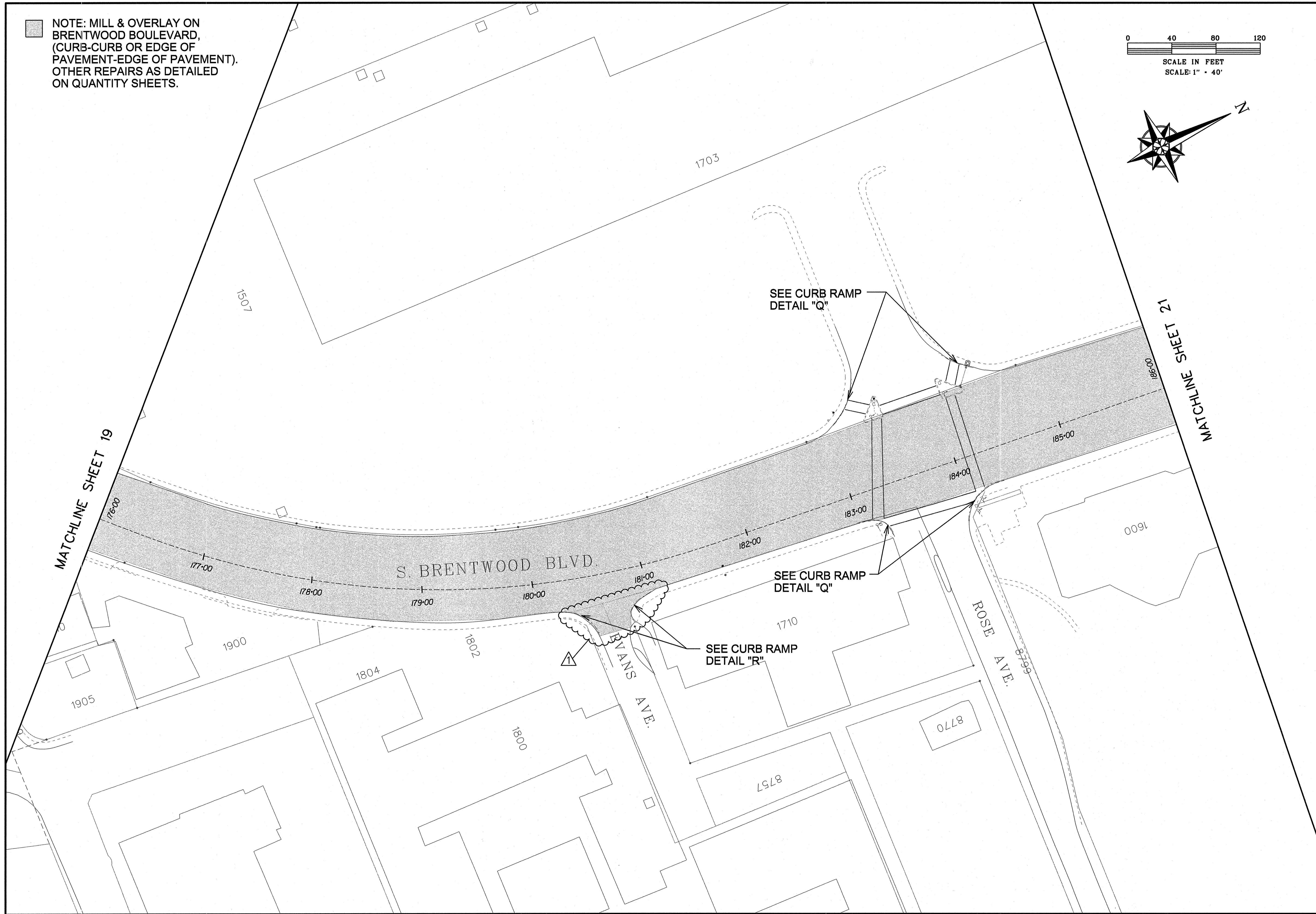
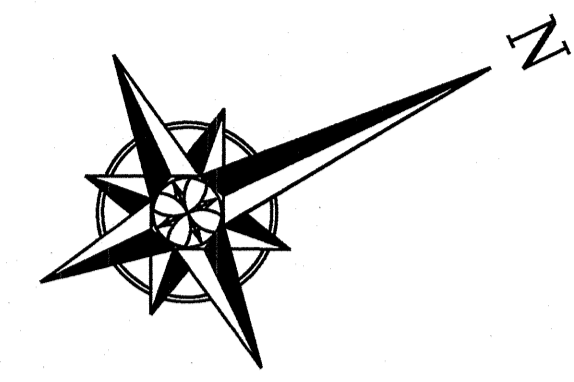
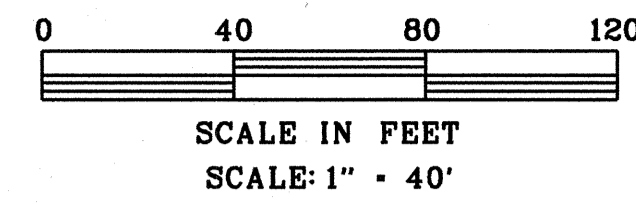
DESIGNED: Z. HALILOVIC  
 DRAWN: Z. HALILOVIC  
 CHECKED: J.W. KULESSA  
 SHEET SEQUENCE:  
 19A OF 48

MATCHLINE SHEET 18

MATCHLINE SHEET 20

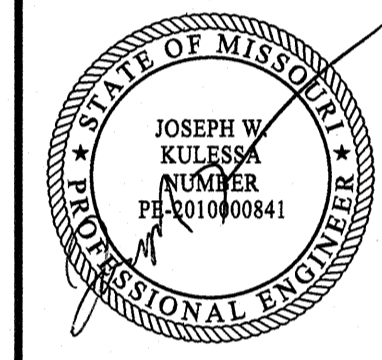


NOTE: MILL & OVERLAY ON BRENTWOOD BOULEVARD, (CURB-CURB OR EDGE OF PAVEMENT-EDGE OF PAVEMENT). OTHER REPAIRS AS DETAILED ON QUANTITY SHEETS.



COUNTY PROJECT NO. <b>AR-1523</b>	
FEDERAL PROJECT NO. <b>STP-5577(633)</b>	
E-W GATEWAY TIP NO. <b>6339-15</b>	
MSD:	<b>N/A</b>
MSD BASE MAP: <b>20K, 21K</b>	
REV	DATE
1	1/2/13
2	2/13
3	
4	
5	
6	
7	
8	
9	
10	
11	
12	
13	
14	
15	
16	
17	
18	
19	
20	
21	
22	
23	
24	
25	
26	
27	
28	
29	
30	
31	
32	
33	
34	
35	
36	
37	
38	
39	
40	
41	
42	
43	
44	
45	
46	
47	
48	
49	
50	
51	
52	
53	
54	
55	
56	
57	
58	
59	
60	
61	
62	
63	
64	
65	
66	
67	
68	
69	
70	
71	
72	
73	
74	
75	
76	
77	
78	
79	
80	
81	
82	
83	
84	
85	
86	
87	
88	
89	
90	
91	
92	
93	
94	
95	
96	
97	
98	
99	
100	

DISCLAIMER OF RESPONSIBILITY: I hereby specify that the documents intended to be used in connection with this project are limited to this sheet, and I hereby disclaim any responsibility for all other documents or instruments relating to or intended to be used in connection with this project or survey.



DATE: **2/19/2015**

PREPARED BY:  
DESIGN DIVISION  
121 SOUTH MERAMEC AVENUE  
7TH FLOOR  
CLAYTON, MISSOURI 63105  
(314) 615-8543  
JOSEPH W. KULESSA  
PROFESSIONAL ENGINEER  
LICENSE NO. 2010000841

**St. Louis County**  
**HIGHWAYS & TRAFFIC**  
**PUBLIC WORKS**  
Sheryl L. Hodges, D.E., P.E., LPG  
Director

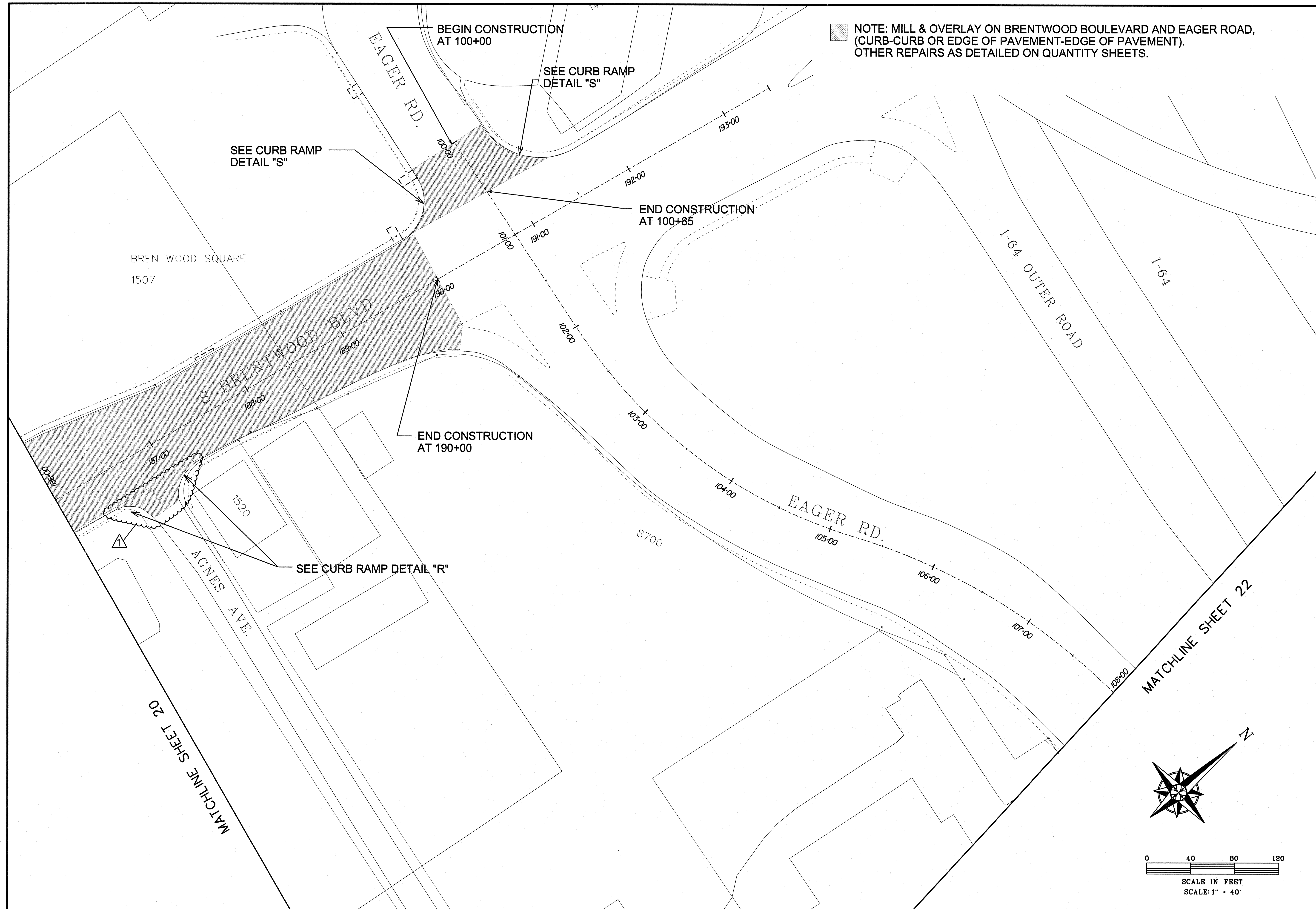
**BRENTWOOD BOULEVARD**  
**INFRASTRUCTURE**  
**PLAN SHEET**  
**(8 OF 11)**

DESIGNED:  
**Z. HALILOVIC**

DRAWN:  
**Z. HALILOVIC**

CHECKED:  
**J.W. KULESSA**

SHEET SEQUENCE:  
**20A OF 48**



COUNTY PROJECT NO.  
**AR-1523**

FEDERAL PROJECT NO.  
STP-5577(633)

E-W GATEWAY TIP NO.  
6339-15

MSD:  
N/A

MSD BASE MAP:  
20K, 21K

REV	DATE	BY	APP	DESCRIPTION
1	2/18	ZH	JMK	ADDENDUM NO. 1

DISCLAIMER OF RESPONSIBILITY: I, the undersigned, hereby certify that the design shown on this sheet is the work of my firm, and I am a duly licensed Professional Engineer in the State of Missouri. My license number is 2010000841. I am not responsible for any errors or omissions in this drawing or for any consequences arising therefrom. This drawing is to be used for any part of the engineering project or survey.

STATE OF MISSOURI  
  
 JOSEPH W. KULESSA  
 LICENSE NO. 2010000841  
 PROFESSIONAL ENGINEER

DATE: 2/19/2015

PREPARED BY:  
 DESIGN DIVISION  
 121 SOUTH MERAMEC AVENUE 63105  
 CLAYTON, MISSOURI 63105  
 (314) 615-6843

JOSEPH W. KULESSA  
 LICENSE NO. 2010000841  
 PROFESSIONAL ENGINEER

**SAINT LOUIS COUNTY**  
**HIGHWAYS & TRAFFIC**  
**PUBLIC WORKS**  
 Sheryl L. Hodges, D.E., P.E., LPG  
 Director

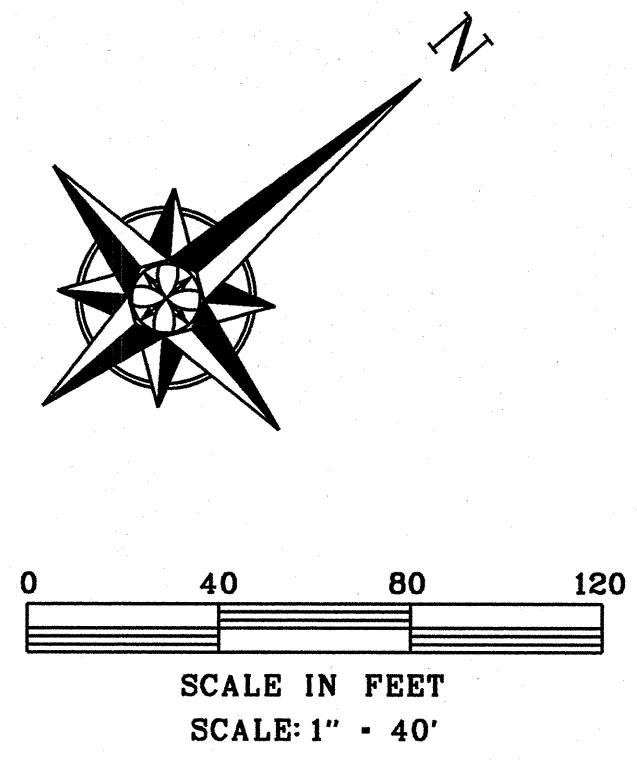
BRENTWOOD BOULEVARD  
 INFRASTRUCTURE  
 PLAN SHEET  
 (9 OF 11)

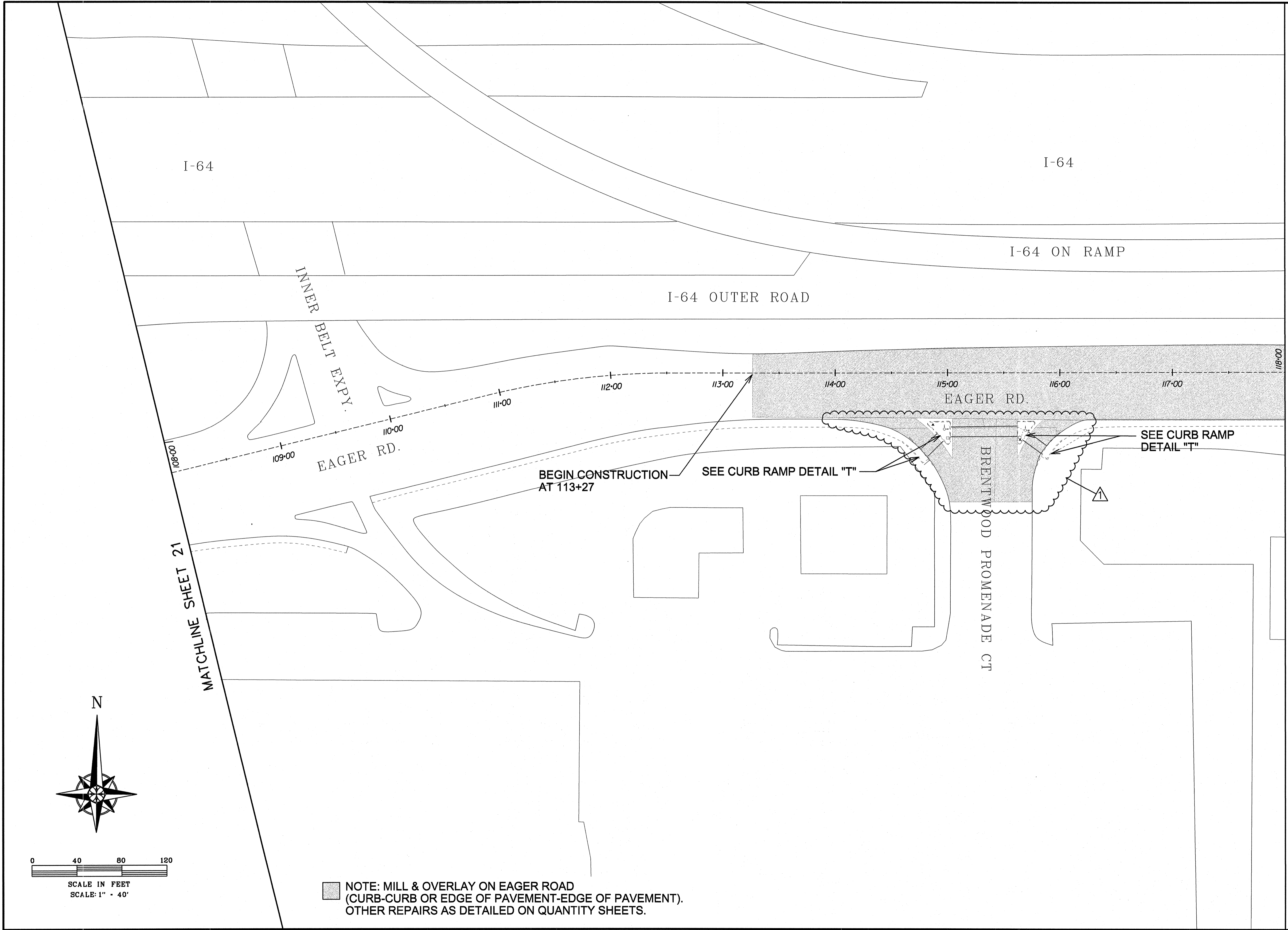
DESIGNED:  
Z. HALILOVIC

DRAWN:  
Z. HALILOVIC

CHECKED:  
J.W. KULESSA

SHEET SEQUENCE:  
21A OF 48



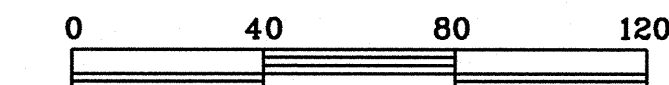


NOTE: MILL & OVERLAY ON EAGER ROAD (CURB-CURB OR EDGE OF PAVEMENT-EDGE OF PAVEMENT). OTHER REPAIRS AS DETAILED ON QUANTITY SHEETS.

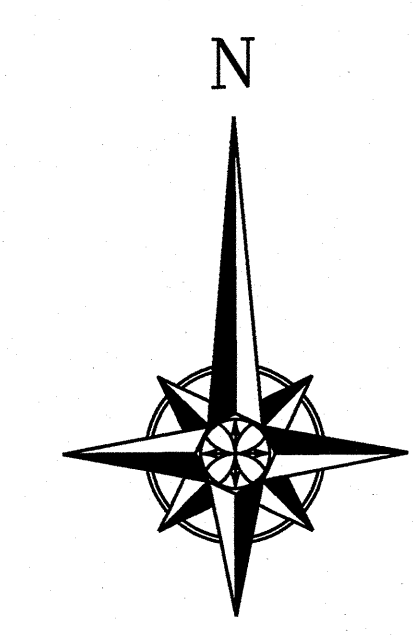
COUNTY PROJECT NO. <b>AR-1523</b>	
FEDERAL PROJECT NO. <b>STP-5577(633)</b>	
E-W GATEWAY TIP NO. <b>6339-15</b>	
MSD:	<b>N/A</b>
MSD BASE MAP: <b>20K, 21K</b>	
REV	DATE
1	2/13
BY	ZH JWK
APP	
DESCRIPTION	ADDENDUM NO.1
DISCLAIMER OF RESPONSIBILITY: I hereby specify that the work authorized by my seal are limited to this sheet, and I hereby disclaim any other drawings, specifications, estimates, reports or other documents or information relating to or intended to be used for any part of the engineering project or survey.	
DATE:	<b>2/19/2015</b>
PREPARED BY:	DESIGN DIVISION 121 SOUTH MERAMEC AVENUE 7TH FLOOR CLAYTON, MISSOURI 63105 (314) 915-8845 JOSEPH W. KULESSA PROFESSIONAL ENGINEER LICENSE NO. 2010000841
<b>BRENTWOOD BOULEVARD INFRASTRUCTURE</b> PLAN SHEET (10 OF 11)	
DESIGNED:	<b>Z. HALILOVIC</b>
DRAWN:	<b>Z. HALILOVIC</b>
CHECKED:	<b>J.W. KULESSA</b>
SHEET SEQUENCE:	<b>22A OF 48</b>

MATCHLINE SHEET 21

MATCHLINE SHEET 23

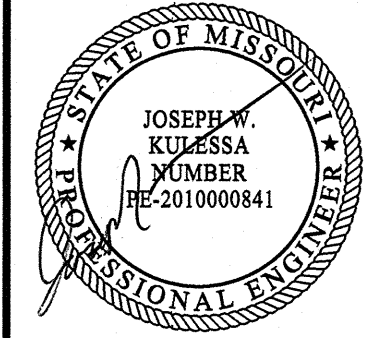


SCALE IN FEET  
SCALE: 1" = 40'



COUNTY PROJECT NO.	AR-1523		
FEDERAL PROJECT NO.	STP-5577(633)		
E-W GATEWAY TIP NO.	6339-15		
MSD:	N/A		
MSD BASE MAP:	20K, 21K		
REVISIONS			
REV. DATE	BY	APP.	DESCRIPTION
1	2/18	Z/H	JMK
			ADDENDUM NO. 1

DISCLAIMER OF LIABILITY: I hereby certify that the work shown on this drawing was prepared by me or under my direct supervision and that I am a duly licensed Professional Engineer in the State of Missouri. I am not responsible for any errors or omissions in this drawing or for any consequences arising therefrom. I accept no responsibility for any damages, claims, or lawsuits, in whole or in part, resulting from the use of this drawing for any purpose other than that intended by the engineer who prepared it.



DATE: 2/19/2015

PREPARED BY:  
DESIGN DIVISION  
121 SOUTH MERAMEC AVENUE  
7TH FLOOR 63105  
CLAYTON, MO 63044  
(314) 915-8843  
JOSEPH W. KULESSA  
PROFESSIONAL ENGINEER  
LICENSE NO. 2010000841

Saint Louis  
**COUNTY**  
HIGHWAYS & TRAFFIC  
PUBLIC WORKS  
Sheryl L. Hodges, D.E., P.E., LPG  
Director

BRENTWOOD BOULEVARD  
INFRASTRUCTURE  
PLAN SHEET  
(11 OF 11)

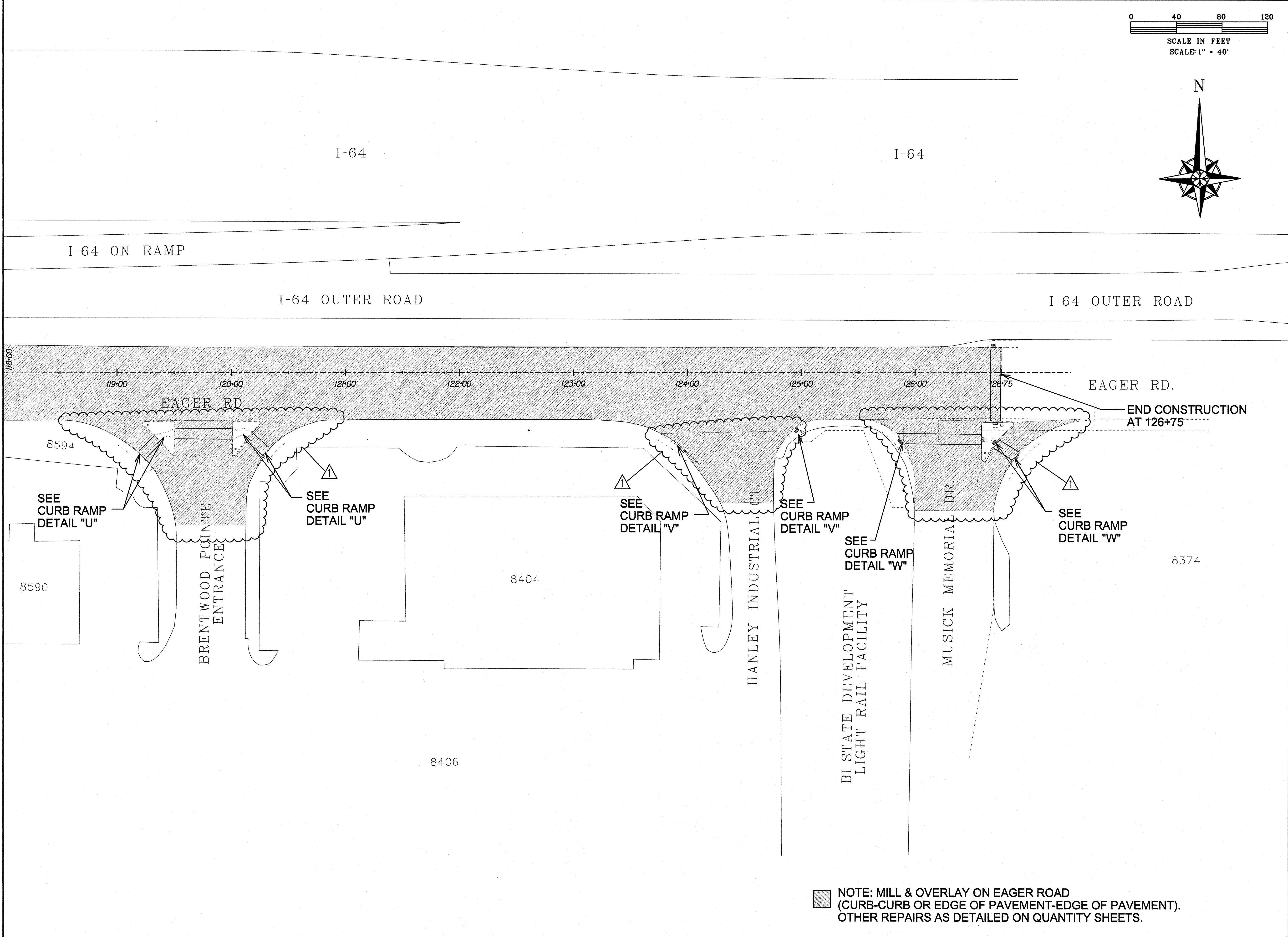
DESIGNED:  
Z. HALILOVIC

DRAWN:  
Z. HALILOVIC

CHECKED:  
J.W. KULESSA

SHEET SEQUENCE:  
23A OF 48

MATCHLINE SHEET 22



NOTE: MILL & OVERLAY ON EAGER ROAD  
(CURB-CURB OR EDGE OF PAVEMENT-EDGE OF PAVEMENT).  
OTHER REPAIRS AS DETAILED ON QUANTITY SHEETS.

## ITEMIZED BID

**FEDERAL PROJECT NO. STP-5577(633)**  
**COUNTY PROJECT NO. AR-1523**

**PAGE 1 OF 5**

ITEM NO.	ITEM DESCRIPTION	UNIT	QUANTITY	UNIT PRICE	AMOUNT
<b>ROADWAY ITEMS</b>					
202-20.10	Removal of Improvements	L.S.	1		
202-22.30	Removal of Rigid Pavement	S.Y.	950.1		
203-10.00	Class "A" Excavation	C.Y.	455.1		
203-10.30	Land Disturbance Permits	L.S.	1		
304-05.04	Type 5 Aggregate Base (4" Thick)	S.Y.	4096.8		
404-09.09	Superpave Asphaltic Concrete Mixture SP95 (PG76-22)C	TON	4795.4		
404-12.76	Superpave Asphaltic Concrete Mixture SP125 (PG 76-22)CLP	TON	6608.5		
405-30.10	Type "C" Bituminous Concrete (Pavement)	TON	1391.5		
405-30.20	Type "D" Bituminous Concrete (Pavement)	TON	105		
405-30.25	Asphalt Pavement Repair	S.Y.	726.1		
407-10.27	Tack-Emulsified Asphalt (SS-1H)	GAL.	7088.6		
412-10.04	Pavement Surfacing and Texturing (0" to 4"), Concrete or Asphalt	S.Y.	88100		
502-99.98	Remove and Replace Concrete Pavement (8" Non-reinforced), Includes Curb (Bonus/Penalty)	S.Y.	157		

## ITEMIZED BID

**FEDERAL PROJECT NO. STP-5577(633)**  
**COUNTY PROJECT NO. AR-1523**

**PAGE 2 OF 5**

ITEM NO.	ITEM DESCRIPTION	UNIT	QUANTITY	UNIT PRICE	AMOUNT
509-12.08	Concrete Base (8" Reinforced)	S.Y.	42.7		
509-12.38	Concrete Base (8" Reinforced), Very Early Strength	S.Y.	50		
603-10.35	Adjust Water Service Valve Box to Grade	EACH	3		
604-20.26	Adjust Grate Inlet to Grade	EACH	3		
604-20.30	Adjusting Manhole to Grade	EACH	91		
604-90.40	Adjust Inlet Stone to Grade	EACH	7		
604-90.50	Replace Precast Inlet Stone and Adjust to Grade	EACH	8		
604-90.52	Replace Inlet Sill	EACH	6		
604-90.55	Replace Inlet Lid	EACH	6		
608-10.90	Remove and Replace Concrete Median/Island	S.Y.	340.6		
608-50.96	Remove and Replace Paved Approach (6")	S.Y.	16.7		
608-50.97	Remove and Replace Paved Approach (7")	S.Y.	181		
609-10.93	Remove and Replace Curb and Gutter (Various Widths), Vertical/Mountable	L.F.	1288		
609-20.11	Integral Curb (6" Height and Under)	L.F.	300		

## ITEMIZED BID

**FEDERAL PROJECT NO. STP-5577(633)**  
**COUNTY PROJECT NO. AR-1523**

**PAGE 3 OF 5**

ITEM NO.	ITEM DESCRIPTION	UNIT	QUANTITY	UNIT PRICE	AMOUNT
609-20.90	Remove and Replace Integral Curb (6" Height and Under)	L.F.	1912		
609-30.10	Asphalt Curb	L.F.	73		
612-30.10	Standard Traffic Control Devices	L.S.	1		
612-60.92	Arrow Panel, Type "B" (Noiseless), Rental	EACH	8		
613-10.91	Joint Repair - Transverse, Very Early Strength	S.Y.	75		
613-20.20	Joint Repair - Longitudinal, Very Early Strength	S.Y.	75		
619-00.00	Mobilization	L.S.	1		
803-20.00	Strip Sodding	S.Y.	422		
806-45.00	Inlet Protection	L.S.	1		
	<b>SUBTOTAL Roadway Items</b>				
<b>COUNTY TRAFFIC SIGNAL ITEMS</b>					
904-24.01	Signal Head, Type 1S, Pedestrian	EACH	9		
904-27.15	Post, Signal, w/Sq. Pedestal Base, 15' Total Height, Aluminum	EACH	1		
904-28.07	Post, Signal, w/Sq. Pedestal Base and Post Cap, 7' Maximum Total Height, Aluminum	EACH	26		



## ITEMIZED BID

**FEDERAL PROJECT NO. STP-5577(633)**  
**COUNTY PROJECT NO. AR-1523**

**PAGE 4 OF 5**

ITEM NO.	ITEM DESCRIPTION	UNIT	QUANTITY	UNIT PRICE	AMOUNT
904-49.20	Detector, Pedestrian Push Button, Freezeproof	EACH	33		
904-52.00	Conduit, 2"	L.F.	310		
904-74.99	Conduit Repair (locate broken conduit, excavate, remove existing cable, repair/replace conduit, reinstall cable, backfill and restore) (Does not include sidewalk or pavement removal and replacement)	EACH	1		
904-83.05	Cable, Signal, #14 Gauge, 5 Conductor	L.F.	330		
904-84.00	Wire, Stranded Ground, #6 Gauge	L.F.	550		
904-85.05	Cable, Detector Loop, #14 Gauge, 1 Conductor, w/Tube Jacket (In Conduit and Pull Boxes)	L.F.	4339		
904-85.06	Cable, Detector Loop, #14 Gauge, 1 Conductor, w/Tube Jacket (In Sawed Slot)	L.F.	24336		
904-85.18	Cable, Push Button and/or Detector Loop Lead-In, #18 Gauge, 2 Conductor (Shielded)	L.F.	4360		
904-90.17	Preformed Pull Box (17"W x 30"L x 26"min.H), Reinforced Polymer Concrete w/1' Concrete Apron	EACH	6		
904-91.43	Base, Type P-3, Concrete	EACH	26		
904-91.73	Base, Type C-3, Concrete	EACH	1		
904-95.10	Opening Drilled in Existing Concrete Pull Box	EACH	26		
904-95.31	Adjustment of Preformed Pull Box	EACH	17		

## ITEMIZED BID

FEDERAL PROJECT NO. STP-5577(633)  
 COUNTY PROJECT NO. AR-1523

PAGE 5 OF 5

ITEM NO.	ITEM DESCRIPTION	UNIT	QUANTITY	UNIT PRICE	AMOUNT
904-95.40	Adjustment of Concrete Single Pull Box	EACH	12		
904-95.42	Adjustment of Concrete Double Pull Box	EACH	14		
904-98.60	Relocation of Existing Push Button	EACH	5		
	<b>SUBTOTAL County Traffic Signal Items</b>				
<b>PEDESTRIAN AND BICYCLE ITEMS</b>					
201-20.11	Clearing Vegetation from the Pedestrian Access Route	L.S.	1		
412-20.00	Sidewalk Grinding	EACH	20		
608-60.08	Concrete Sidewalk, Curb Ramp	EACH	127		
608-60.94	Remove and Replace Concrete Sidewalk (4" Thick)	S.Y.	1036.3		
608-60.96	Remove and Replace Concrete Sidewalk (6" Thick)	S.Y.	18.8		
608-60.99	Truncated Domes for Curb Ramps (Retrofit Construction)	S.F.	130		
	<b>SUBTOTAL Pedestrian and Bicycle Items</b>				
	<b>PROJECT TOTAL</b>				

February 19, 2015

**ADDENDUM ACKNOWLEDGEMENT**

**ADDENDUM NO. 1**

FROM: St. Louis County Department of Highways and Traffic

RE: Brentwood Boulevard Infrastructure  
St. Louis County Project No. AR-1523  
Federal Project No. STP-5577(633)

**PACKAGE INCLUDES THIS ACKNOWLEDGEMENT,  
ADDENDUM NOTICE, REVISED PLAN SHEET AND ITEMIZED  
BID SHEETS.**

(20 pages total)

IF YOU DID NOT RECEIVE ALL PAGES, CALL (314) 615-8569.

UPON RECEIPT OF THIS PACKAGE, **PLEASE SIGN AND  
DATE** (IN THE INDICATED LOCATIONS BELOW), AND **FAX  
THIS ACKNOWLEDGEMENT TO THE DEPARTMENT OF  
HIGHWAYS & TRAFFIC AT (314) 615-8194** (Attn: Zenija  
Halilovic, DESIGN DIVISION) TO VERIFY RECEIPT

COMPANY \_\_\_\_\_

RECEIVED BY \_\_\_\_\_

DATE \_\_\_\_\_

**COUNTY BLUE REPROGRAPHICS, INC.**

**PROJECT DISTRIBUTION INFORMATION**

**PROJECT MANAGERS: MAKE 8 COPIES OF THE ADDENDUM AND SEND TO CONSTRUCTION DIVISION: DAVE CORWIN**

Date:  

**Client Information**

Company Name:	St. Louis County Department of Highways and Traffic				
Contact Name:	Zenija Halilovic				
Contact Email:	zhalilovic@stlouisco.com				
Contact Phone:	(314) 615-8569				
Secondary Contact Name:	Design Division				
Address:	1050 North Lindbergh				
City:	St. Louis	State:	MO	Zip:	63132
Phone:	(314) 615-8543	Fax:	(314) 615-8194		

**Project Information**

Project Name:	Brentwood Boulevard Infrastructure	Project No:	AR-1523		
Bid Date:	March 4, 2015	Bid Time:	2:00 PM		
Project Location:	St. Louis County				
City:		State:	MO	Zip:	

Miscellaneous Information:

Plans Available on Deposit:  Yes  No

Special Bid Instructions PLEASE PLACE ADDENDUM AND ATTACHMENT ON WEBSITE AND SEND TO PLANHOLDERS NO LATER THAN February 23, 2015. (ADDENDUM ACKNOWLEDGEMENT IS INCLUDED.) PLEASE PROVIDE ST. LOUIS COUNTY VERIFICATION OF TRANSMITTAL TO PLANHOLDERS.

**Bidder's List, Distribution Information and Addenda**

Open  Approved Only

Maximum Number of Sets:

Per Contractor:	Unlimited
Provided by Owne	1 each to AGCof MO ePlan, MoKan, F.W. Dodge, Reed Market Data, SIBA, isqft & Contractors Assistance Program

Please select all the options that are allowed:

- |   |  |
|---|--|
| <input checked="" type="checkbox"/> Full Sets | <input type="checkbox"/> Half Sets                             |
| <input type="checkbox"/> Partial Sets         | <input type="checkbox"/> Half Size Sets                        |
| <input type="checkbox"/> Single Sheets        | <input checked="" type="checkbox"/> CD Distribution (PDF, TIF) |

Should CDS automatically send addenda to all plan holders?

Yes (Notify, send & verify receipt)  No

Who is paying for addenda printing & delivery?  Contractor  Subcontractor

Signature *Zenija Halilovic*

Date: 2/23/2015