

LITZSINGER ROAD IMPROVEMENTS – ADDENDUM #1
City of Brentwood, MO
Federal Project STP-5438(608)
March 6, 2015

This addendum is hereby made part of the contract documents of the above referenced project. This addendum supplements and/or amends the originally issued documents and all related addenda.

Attachments:

- Revised Bid Form
 - Line number 57 (1" Schedule 40 PVC Conduit) was changed to Item number 9017401 (Cable Conduit, 1 in., 2 Conductors and 1 Bare Neutral, 2 AWG).
 - Line number 58 (2" Schedule 40 PVC Conduit) was changed to Item number 9017407 (Cable Conduit, 1 in., 2 Conductors and 1 Bare Neutral, 8 AWG).
 - Line numbers 59, 60, 61, 62, & 65 are no longer used.

- Sheet 2A revised to reflect the updated quantities.

- Sheet E2-E5 revised callouts to reflect utilization of cable conduit.

- Sheet E6 revised panel configuration.

- Additional Remarks
 - Polypropylene pipe is allowed as a suitable substitute to reinforced concrete pipes. All pipe shall conform to the Metropolitan St. Louis Sewer District Standard Construction Specifications for Sewers and Drainage Facilities, 2009 and latest approved material list.

ACKNOWLEDGEMENT OF ADDENDUM #1

The bidder will acknowledge receipt of this Addendum and acceptance of its conditions by signing this Addendum and including it with the bid.

SIGNATURE: _____

TITLE: _____

COMPANY: _____

DATE: _____

ITEMIZED BID FORM

Litzsinger Road Improvements Resurfacing and Sidewalks

LINE	ITEM NUMBER	DESCRIPTION	UNIT	QUANTITY	UNIT PRICE	TOTAL
		ROADWAY ITEMS:				
1	2013000	CLEARING AND GRUBBING	ACRE	0.2		
2	2022010	REMOVAL OF IMPROVEMENTS	LS	1		
3	2031000	CLASS A EXCAVATION	CY	609		
4	2035500	EMBANKMENT IN PLACE	CY	455		
5	2036000	COMPACTING EMBANKMENT	CY	518		
6	3040504	TYPE 5 AGGREGATE FOR BASE (4 IN. THICK)	SY	4541		
7	4011209	BITUMINOUS PAVEMENT MIXTURE PG64-22, (BP-1)	TON	1130		
8	4013000	BITUMINOUS PAVEMENT MIXTURE PG64-22 (BASE)	TON	230		
9	4019906	FULL DEPTH PAVEMENT REPAIR	SY	1000		
10	4071005	TACK COAT	GAL	544		
11	4081010	PRIME-LIQUID ASPHALT RC 70 OR MC 30	GAL	300		
12	4134000	BITUMINOUS FOG SEAL	GAL	50		
13	5021106	CONCRETE PAVEMENT (6 IN. NON-REINFORCED)	SY	569		
14	5021107	CONCRETE PAVEMENT (7 IN. NON-REINFORCED)	SY	139		
15	5024008	CONCRETE BASE (8 IN. NON-REINFORCED)	SY	68		
16	5029905	CONCRETE BASE WIDENING	SY	277		
17	6031020	RELOCATING SERVICE CONNECTIONS (CLASS 5) (UNDER 1 IN. DIA)	EACH	7		
18	6031023	RELOCATING SERVICE CONNECTIONS (CLASS 5) (3 IN. DIA AND ABOVE)	EACH	2		
19	6039902	ADJUST WATER SERVICE VALVE BOX TO GRADE	EACH	32		
20	6039904	ADJUST TO GRADE WATER METER	EACH	4		
21	6039932	ADJUST TO GRADE GAS VALVE	EACH	16		
22	6042010	ADJUSTING MANHOLE	EACH	7		
23	6049902	ADJUST TO GRADE SINGLE CURB INLET WITH NEW INLET STONE	EACH	1		
24	6049908	ADJUST TO GRADE DOUBLE CURB INLET WITH NEW INLET STONE	EACH	3		
25	6085006	PAVED APPROACH, 6 IN	SY	518		
26	6085007	PAVED APPROACH, 7IN	SY	128		
27	6091010	CONCRETE CURB (6 IN. HEIGHT AND UNDER) TYPE S	LF	551		

LINE	ITEM NUMBER	DESCRIPTION	UNIT	QUANTITY	UNIT PRICE	TOTAL
28	6092011	INTEGRAL CURB (6 IN. HEIGHT AND UNDER) TYPE A	LF	133		
29	6099903	CONCRETE CURB AND GUTTER (2' WIDE)	LF	2523		
30	6099904	ROLLED CURB AND GUTTER (3" HEIGHT)	LF	418		
31	6099905	INTEGRAL ROLLED CURB	LF	133		
32	6131014	FULL DEPTH PAVEMENT REPAIR SAWCUT	LF	6644		
33	6169901	CHANNELIZING DEVICE	LS	1		
34	6169906	CONSTRUCTION SIGNS	LS	1		
35	6181000	MOBILIZATION	LS	1		
36	6221001	COLDMILLING BITUMINOUS PAVEMENT FOR REMOVAL OR SURFACING (3 IN. THICK OR LESS)	SY	9414		
37	6274000	CONTRACTOR FURNISHED SURVEYING AND STAKING	LS	1		
38	7261312	12" CLASS III REINFORCED CONCRETE PIPE CULVERT	LF	293		
39	7261315	15" CLASS III REINFORCED CONCRETE PIPE CULVERT	LF	613		
40	7261318	18" CLASS III REINFORCED CONCRETE PIPE CULVERT	LF	520		
41	7319902	MANHOLE	EACH	2		
42	7319904	SINGLE CURB INLET, UNTRAPPED	EACH	7		
43	8061019	SILT FENCE	LF	500		
44	8069903	FIBER ROLLS	LF	39		
		PAVEMENT MARKING:				
45	6206000B	4 IN. WHITE ACRYLIC WATERBORNE PAVEMENT MARKING PAINT	LF	6185		
46	6206001B	4 IN. YELLOW ACRYLIC WATERBORNE PAVEMENT MARKING PAINT	LF	6606		
47	6206106	6 IN. WHITE ACRYLIC WATERBORNE PAVEMENT MARKING PAINT	LF	583		
48	6206124	24 IN. WHITE ACRYLIC WATERBORNE PAVEMENT MARKING PAINT	LF	149		
		LANDSCAPING/STREETSCAPING:				
49	8031000A	TURF TYPE TALL FESCUE SODDING	SY	2726		
50	8069902	IRRIGATION LINE REPLACEMENT	LF	300		
51	8069903	IRRIGATION HEAD REPLACEMENT	EACH	10		
52	8089901	CONSTRUCTION FENCE FOR TREE PROTECTION	LF	80		

LINE	ITEM NUMBER	DESCRIPTION	UNIT	QUANTITY	UNIT PRICE	TOTAL
		TRAFFIC SIGNALS:				
53	9028500	CABLE, LOOP DETECTOR, IN DUCT	LF	1160		
		PEDESTRIAN FACILITIES:				
54	6081010	CONCRETE CURB RAMP	SY	450		
55	6081012	TRUNCATED DOMES	SF	263		
56	6086004	CONCRETE SIDEWALK, 4 IN.	SY	1731		
		LIGHTING:				
57	9017401	CABLE CONDUIT, 1 IN., 2 CONDUCTORS AND 1 BARE NEUTRAL, 2 AWG	LF	80		
58	9017407	CABLE CONDUIT, 1 IN., 2 CONDUCTORS AND 1 BARE NEUTRAL, 8 AWG	LF	3200		
59	0	NOT USED	0	0		
60	0	NOT USED	0	0		
61	0	NOT USED	0	0		
62	0	NOT USED	0	0		
63	9019902	66W LED LIGHT FIXTURE WITH 10' DECORATIVE POLE	EA	31		
64	9019904	10' X 3/4" COPPER CLAD GROUND ROD	EA	32		
65	0	NOT USED	0	0		
66	9019906	100 A, 120/240 V, METERED LIGHTING PEDESTAL	EA	1		
67	9029100	CONCRETE BASE FOR LIGHT POLES, METERED PEDESTAL	CY	17		
	TOTAL:	WRITTEN:	NUMBERS:			

LINE NO.	ITEM NUMBER	ITEM DESCRIPTION	UNIT	QUANTITY
SUMMARY OF QUANTITIES				
ROADWAY ITEMS:				
1	2013000	CLEARING AND GRUBBING	ACRE	0.2
2	2022010	REMOVAL OF IMPROVEMENTS	LS	1
3	2031000	CLASS A EXCAVATION	CY	609
4	2035500	EMBANKMENT IN PLACE	CY	455
5	2036000	COMPACTING EMBANKMENT	CY	518
6	3040504	TYPE 5 AGGREGATE FOR BASE (4 IN. THICK)	SY	4541
7	4011209	BITUMINOUS PAVEMENT MIXTURE PG64-22, (BP-1)	TON	1130
8	4013000	BITUMINOUS PAVEMENT MIXTURE PG64-22 (BASE)	TON	230
9	4019906	FULL DEPTH PAVEMENT REPAIR	SY	1000
10	4071005	TACK COAT	GAL	544
11	4081010	PRIME-LIQUID ASPHALT RC 70 OR MC 30	GAL	300
12	4134000	BITUMINOUS FOG SEAL	GAL	50
13	5021106	CONCRETE PAVEMENT (6 IN. NON-REINFORCED)	SY	569
14	5021107	CONCRETE PAVEMENT (7 IN. NON-REINFORCED)	SY	139
15	5024008	CONCRETE BASE (8 IN. NON-REINFORCED)	SY	68
16	5029905	CONCRETE BASE WIDENING	SY	277
17	6031020	RELOCATING SERVICE CONNECTIONS (CLASS 5) (UNDER 1 IN. DIA)	EACH	7
18	6031023	RELOCATING SERVICE CONNECTIONS (CLASS 5) (3 IN. DIA AND ABOVE)	EACH	2
19	6039902	ADJUST WATER SERVICE VALVE BOX TO GRADE	EACH	32
20	6039904	ADJUST TO GRADE WATER METER	EACH	4
21	6039932	ADJUST TO GRADE GAS VALVE	EACH	16
22	6042010	ADJUSTING MANHOLE	EACH	7
23	6049902	ADJUST TO GRADE SINGLE CURB INLET WITH NEW INLET STONE	EACH	1
24	6049908	ADJUST TO GRADE DOUBLE CURB INLET WITH NEW INLET STONE	EACH	3
25	6085006	PAVED APPROACH, 6 IN	SY	518
26	6085007	PAVED APPROACH, 7IN	SY	128
27	6091010	CONCRETE CURB (6 IN. HEIGHT AND UNDER) TYPE S	LF	551
28	6092011	INTEGRAL CURB (6 IN. HEIGHT AND UNDER) TYPE A	LF	133
29	6099903	CONCRETE CURB AND GUTTER (2' WIDE)	LF	2523
30	6099904	ROLLED CURB AND GUTTER (3" HEIGHT)	LF	418
31	6099905	INTEGRAL ROLLED CURB	LF	133
32	6131014	FULL DEPTH PAVEMENT REPAIR SAWCUT	LF	6644
33	6169901	CHANNELIZING DEVICE	LS	1
34	6169906	CONSTRUCTION SIGNS	LS	1
35	6181000	MOBILIZATION	LS	1
36	6221001	COLDMILLING BITUMINOUS PAVEMENT FOR REMOVAL OR SURFACING (3 IN. THICK OR LESS)	SY	9414
37	6274000	CONTRACTOR FURNISHED SURVEYING AND STAKING	LS	1
38	7261312	12" CLASS III REINFORCED CONCRETE PIPE CULVERT	LF	293
39	7261315	15" CLASS III REINFORCED CONCRETE PIPE CULVERT	LF	613
40	7261318	18" CLASS III REINFORCED CONCRETE PIPE CULVERT	LF	520
41	7319902	MANHOLE	EACH	2
42	7319904	SINGLE CURB INLET, UNTRAPPED	EACH	7
43	8061019	SILT FENCE	LF	500
44	8069903	FIBER ROLLS	LF	39



LINE NO.	ITEM NUMBER	ITEM DESCRIPTION	UNIT	QUANTITY
SUMMARY OF QUANTITIES				
PAVEMENT MARKING:				
45	6206000B	4 IN. WHITE ACRYLIC WATERBORNE PAVEMENT MARKING PAINT	LF	6185
46	6206001B	4 IN. YELLOW ACRYLIC WATERBORNE PAVEMENT MARKING PAINT	LF	6606
47	6206106	6 IN. WHITE ACRYLIC WATERBORNE PAVEMENT MARKING PAINT	LF	583
48	6206124	24 IN. WHITE ACRYLIC WATERBORNE PAVEMENT MARKING PAINT	LF	149
LANDSCAPING/STREETSCAPING:				
49	8031000A	TURF TYPE TALL FESCUE SODDING	SY	2726
50	8069902	IRRIGATION LINE REPLACEMENT	LF	300
51	8069903	IRRIGATION HEAD REPLACEMENT	EACH	10
52	8089901	CONSTRUCTION FENCE FOR TREE PROTECTION	LF	80
TRAFFIC SIGNALS:				
53	9028500	CABLE, LOOP DETECTOR, IN DUCT	LF	1160
PEDESTRIAN FACILITIES:				
54	6081010	CONCRETE CURB RAMP	SY	450
55	6081012	TRUNCATED DOMES	SF	263
56	6086004	CONCRETE SIDEWALK, 4 IN.	SY	1731
LIGHTING:				
57	9017401	CABLE CONDUIT, 1 IN., 2 CONDUCTORS AND 1 BARE NEUTRAL, 2 AWG	LF	80
58	9017407	CABLE CONDUIT, 1 IN., 2 CONDUCTORS AND 1 BARE NEUTRAL, 8 AWG	LF	3200
59	0	NOT USED	0	0
60	0	NOT USED	0	0
61	0	NOT USED	0	0
62	0	NOT USED	0	0
63	9019902	66W LED LIGHT FIXTURE WITH 10' DECORATIVE POLE	EA	31
64	9019904	10' X 3/4" COPPER CLAD GROUND ROD	EA	32
65	0	NOT USED	0	0
66	9019906	100 A, 120/240 V, METERED LIGHTING PEDESTAL	EA	1
67	9029100	CONCRETE BASE FOR LIGHT POLES, METERED PEDESTAL	CY	17

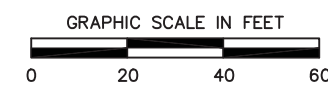
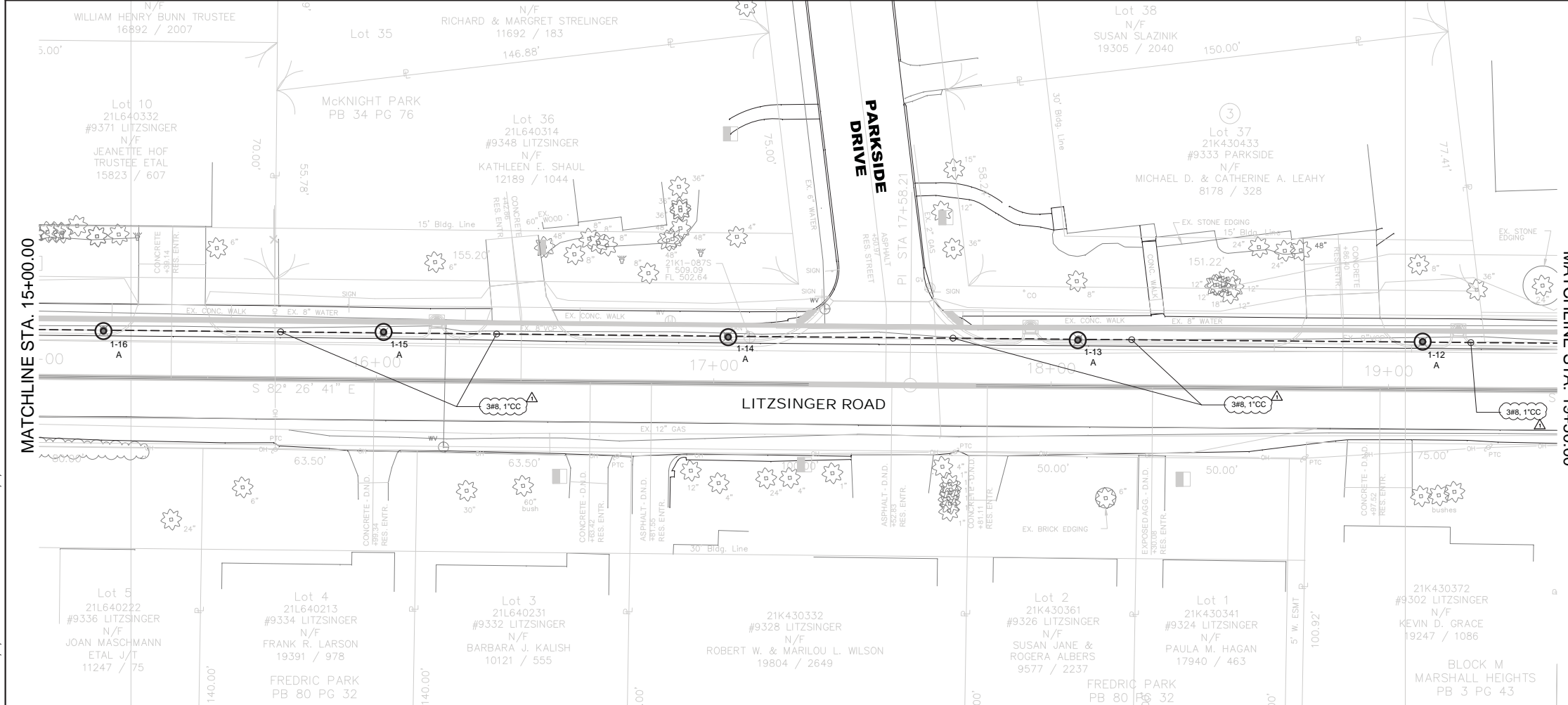
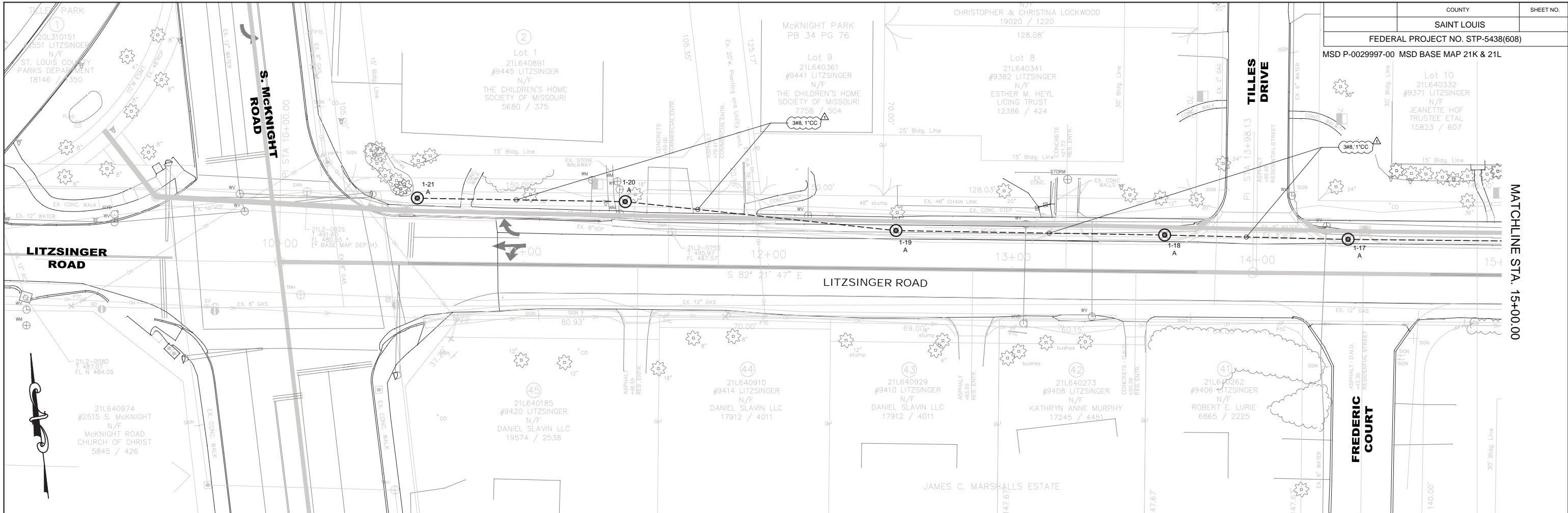
REV.

3/6/2015

...1223700_Quantities.dgn

ZIP CODE OF SITE: 63144

<table border="1"> <tr> <th>REVISIONS NO.</th> <th>DESCRIPTION</th> <th>DATE</th> </tr> <tr> <td>1</td> <td>ADDENDUM 1</td> <td>3-4-15</td> </tr> </table>	REVISIONS NO.	DESCRIPTION	DATE	1	ADDENDUM 1	3-4-15	SCHEDULE OF QUANTITIES	
REVISIONS NO.	DESCRIPTION	DATE						
1	ADDENDUM 1	3-4-15						
LITZINGER ROAD IMPROVEMENTS								
BRENTWOOD, MISSOURI								
	PREPARED BY: 	FILE: 1223700 DATE: 3/6/2015						
<small>Discipline: Professional Engineering Certificate of Authority: 000159 Expiration Date: December 31, 2014</small>								



- GENERAL NOTES:**
- LIGHTING SUBSTATION IDENTIFIERS ARE AS FOLLOWS:
 1-1 = CIRCUIT #1, POLE #1
 - CC = CABLE/CONDUIT IN ACCORDANCE WITH MODOT SPECIFICATIONS.

ZIP CODE OF SITE: 63144

NO.	REVISIONS DESCRIPTION	DATE
1	ADDENDUM #1	3/4/15

PLAN / PLAN SHEET

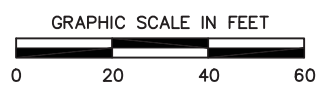
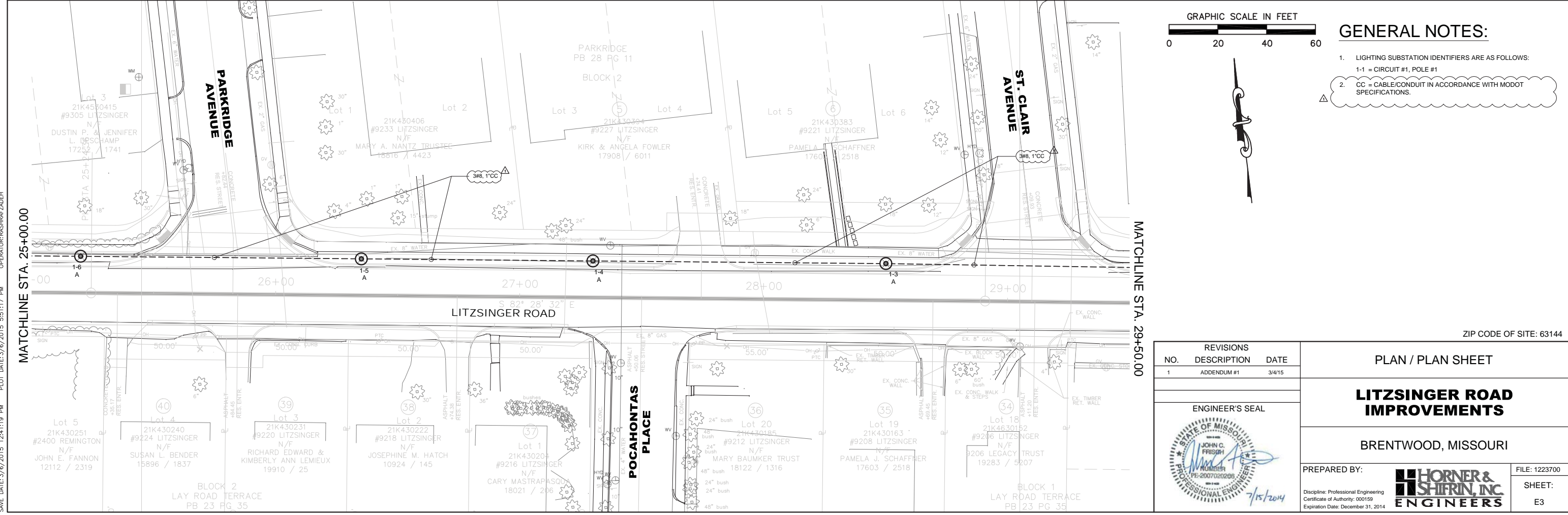
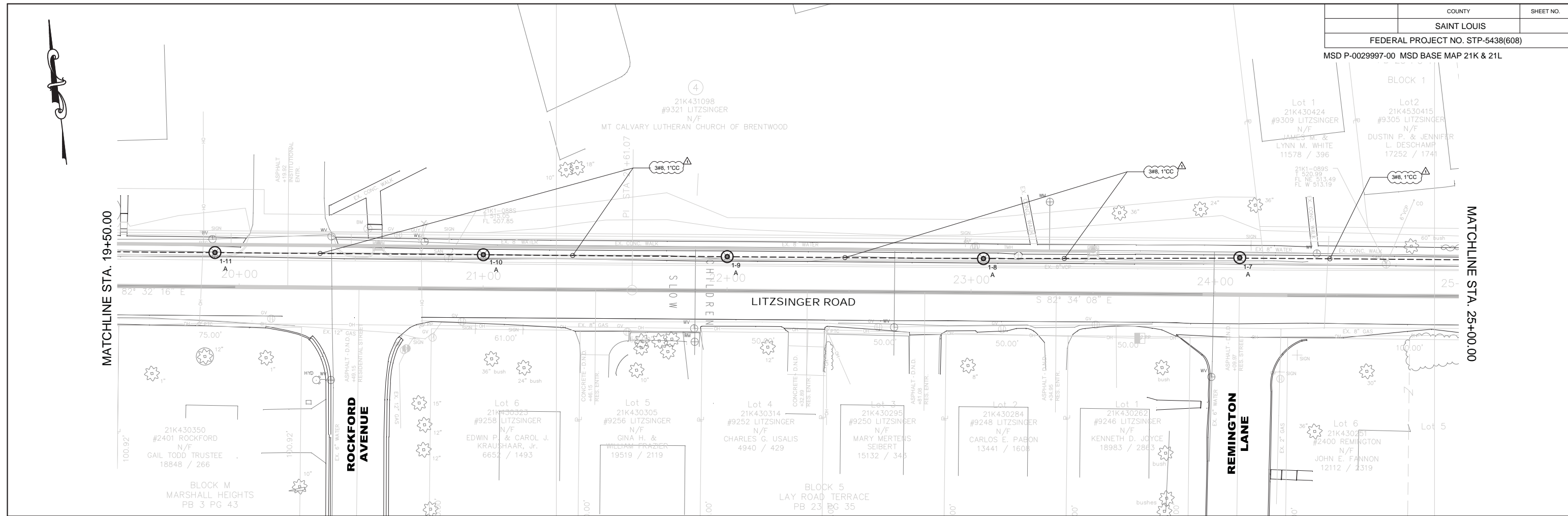
ENGINEER'S SEAL

LITZINGER ROAD IMPROVEMENTS
 BRENTWOOD, MISSOURI

PREPARED BY: **HORNER & SHIRIN, INC. ENGINEERS**

FILE: 1223700
 SHEET: E2
 Discipline: Professional Engineering
 Certificate of Authority: 000159
 Expiration Date: December 31, 2014

DWG: T:\1223700\Cad\VE\1223700_E2.dwg
 DATE: 3/6/2015 12:42:27 PM
 PLOT DATE: 3/6/2015 5:45:59 PM
 OPERATOR: RASHRAZADEH

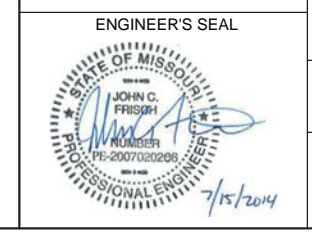


- GENERAL NOTES:**
- LIGHTING SUBSTATION IDENTIFIERS ARE AS FOLLOWS:
1-1 = CIRCUIT #1, POLE #1
 - CC = CABLE/CONDUIT IN ACCORDANCE WITH MODOT SPECIFICATIONS.

ZIP CODE OF SITE: 63144

NO.	REVISIONS DESCRIPTION	DATE
1	ADDENDUM #1	3/4/15

PLAN / PLAN SHEET



LITZINGER ROAD IMPROVEMENTS
BRENTWOOD, MISSOURI

PREPARED BY: **HORNER & SHIRIN, INC. ENGINEERS**

Discipline: Professional Engineering
Certificate of Authority: 000159
Expiration Date: December 31, 2014

FILE: 1223700
SHEET: E3

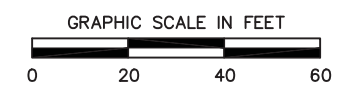
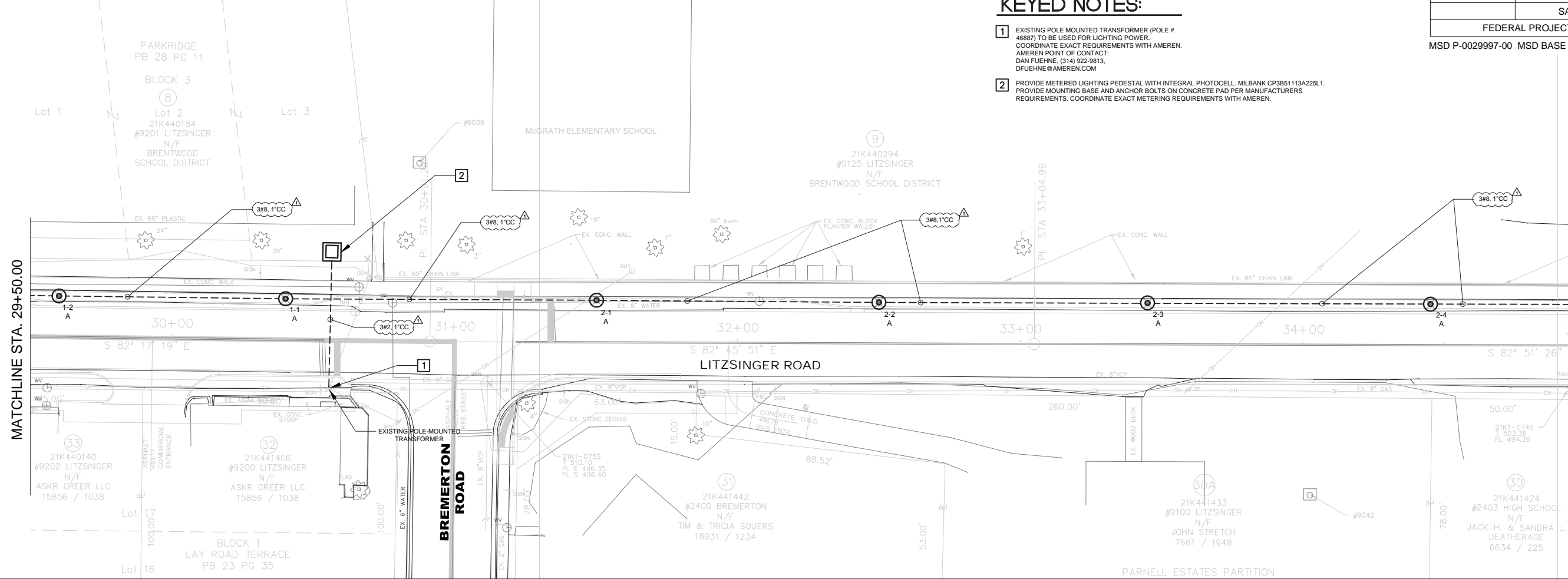
DWG: T:\1223700\Cad\VE\1223700_E3.dwg
 SAVE DATE: 3/9/2015 12:41:19 PM
 PLOT DATE: 3/16/2015 5:51:17 PM
 OPERATOR: RASHRAZADEH

KEYED NOTES:

- EXISTING POLE MOUNTED TRANSFORMER (POLE # 46887) TO BE USED FOR LIGHTING POWER. COORDINATE EXACT REQUIREMENTS WITH AMEREN. AMEREN POINT OF CONTACT: DAN FUEHNE, (314) 922-9813, DFUEHNE@AMEREN.COM
- PROVIDE METERED LIGHTING PEDESTAL WITH INTEGRAL PHOTOCELL. MILBANK CP3851113A225L1. PROVIDE MOUNTING BASE AND ANCHOR BOLTS ON CONCRETE PAD PER MANUFACTURERS REQUIREMENTS. COORDINATE EXACT METERING REQUIREMENTS WITH AMEREN.

MATCHLINE STA. 29+50.00

MATCHLINE STA. 35+00.00



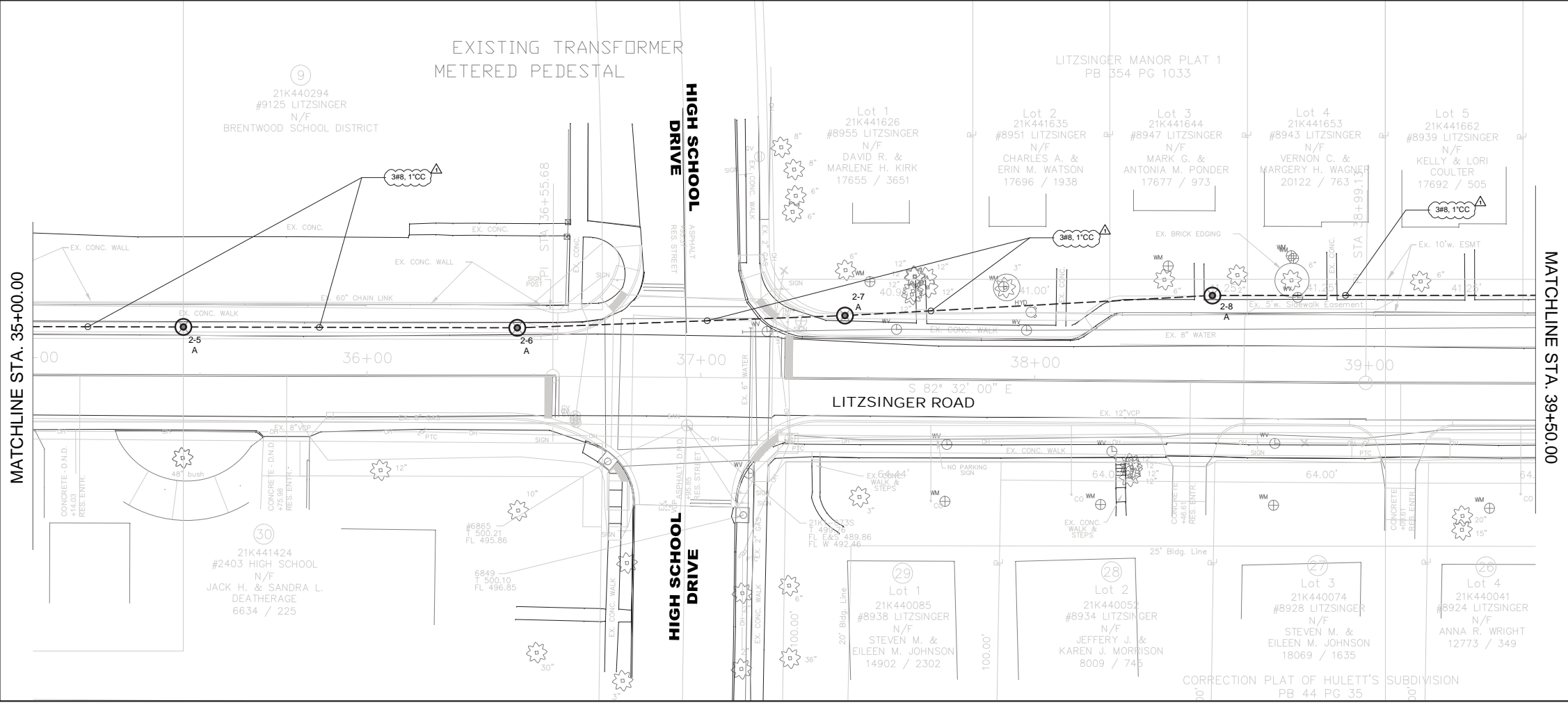
GENERAL NOTES:

- LIGHTING SUBSTATION IDENTIFIERS ARE AS FOLLOWS:
1-1 = CIRCUIT #1, POLE #1
- CC = CABLE/CONDUIT IN ACCORDANCE WITH MODOT SPECIFICATIONS.

ZIP CODE OF SITE: 63144

MATCHLINE STA. 35+00.00

MATCHLINE STA. 39+50.00



REVISIONS NO.	DESCRIPTION	DATE
1	ADDENDUM #1	3/4/15

ENGINEER'S SEAL

PLAN / PLAN SHEET

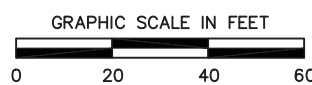
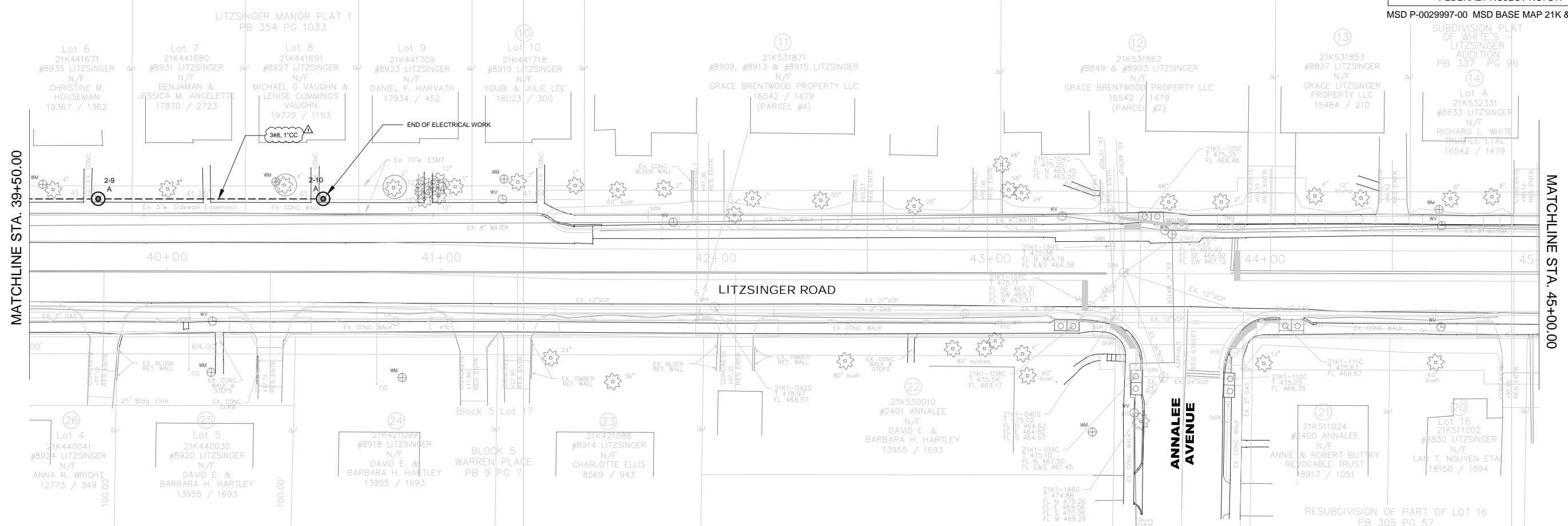
LITZINGER ROAD IMPROVEMENTS

BRENTWOOD, MISSOURI

PREPARED BY: **HORNER & SHIRIN, INC. ENGINEERS**

FILE: 1223700
SHEET: E4
Discipline: Professional Engineering
Certificate of Authority: 000159
Expiration Date: December 31, 2014

DMC: T:\1223700_Cad\1223700_E4.dwg
 SAVE DATE: 3/15/2015 12:40:40 PM
 PLOT DATE: 3/15/2015 5:54:41 PM
 OPERATOR: RASHRAZADEH



GENERAL NOTES:

- LIGHTING SUBSTATION IDENTIFIERS ARE AS FOLLOWS:
1-1 = CIRCUIT #1, POLE #1
- CC = CABLE/CONDUIT IN ACCORDANCE WITH MODOT SPECIFICATIONS.

NO.	DESCRIPTION	DATE
1	ADDENDUM #1	3/4/15

ENGINEER'S SEAL

PLAN / PLAN SHEET

LITZINGER ROAD IMPROVEMENTS

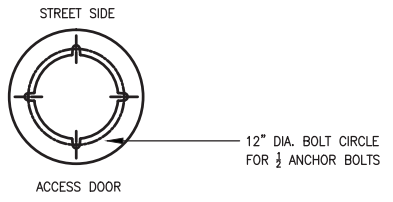
BRENTWOOD, MISSOURI

PREPARED BY: **HORNER & SHIRIN, INC. ENGINEERS**

FILE: 1223700
SHEET: E5
Discipline: Professional Engineering
Certificate of Authority: 000159
Expiration Date: December 31, 2014

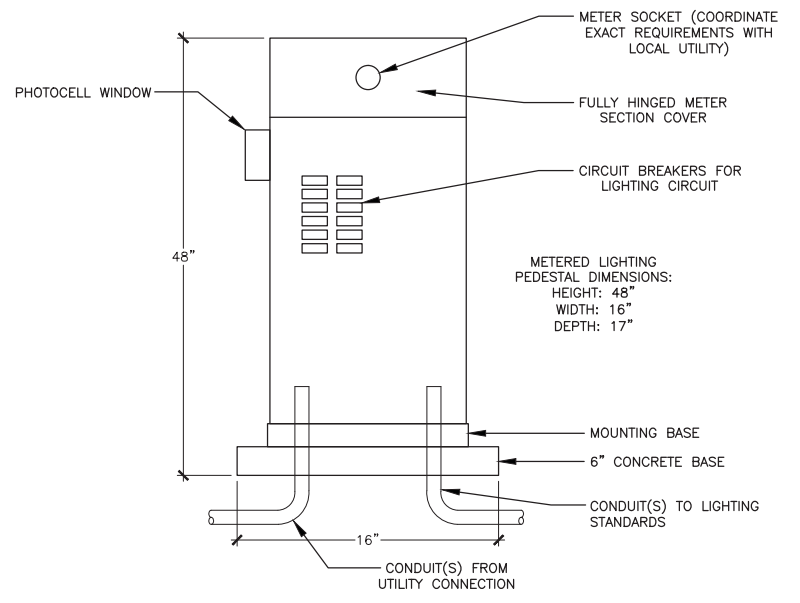
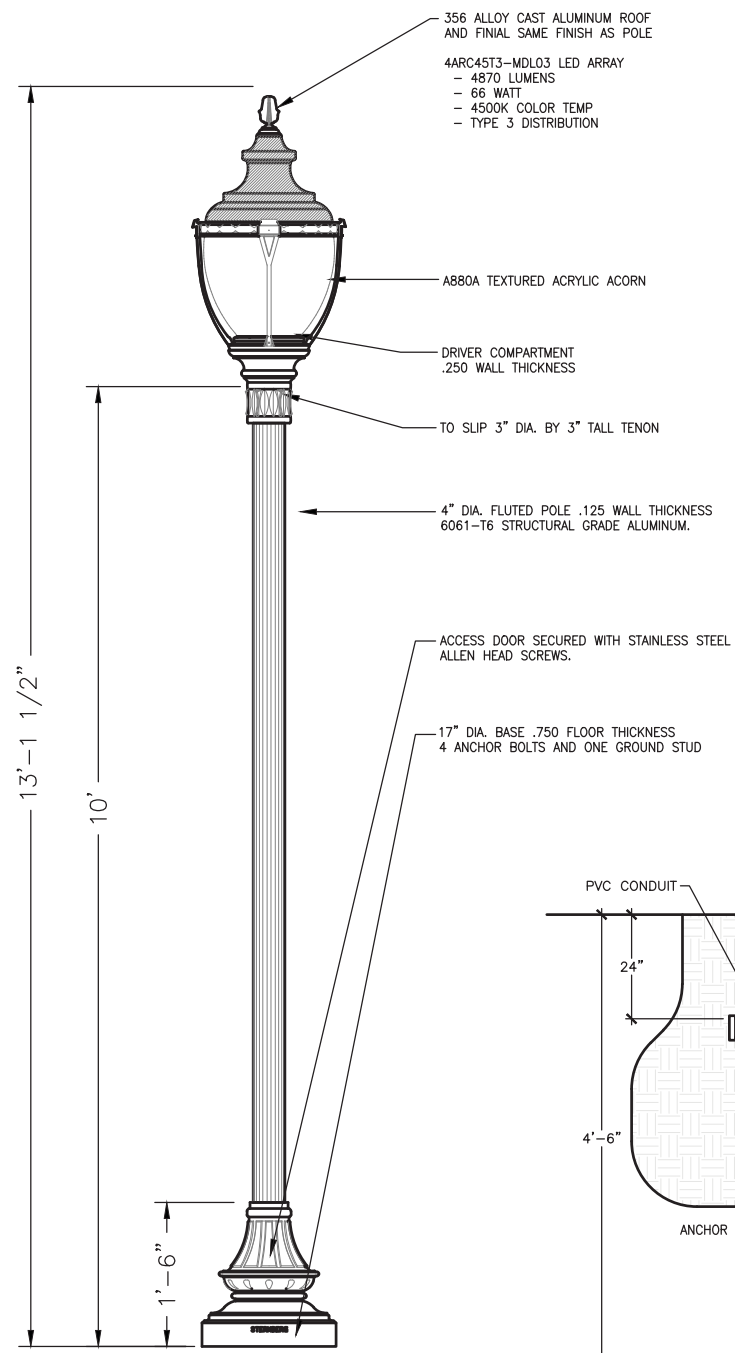
DWG: T:\1223700_Cad\VE\1223700_LE5.dwg
 SAVE DATE: 3/9/2015 12:40:02 PM
 PLOT DATE: 3/9/2015 5:57:04 PM
 OPERATOR: RASIRAZAUEH

ZIP CODE OF SITE: 63144

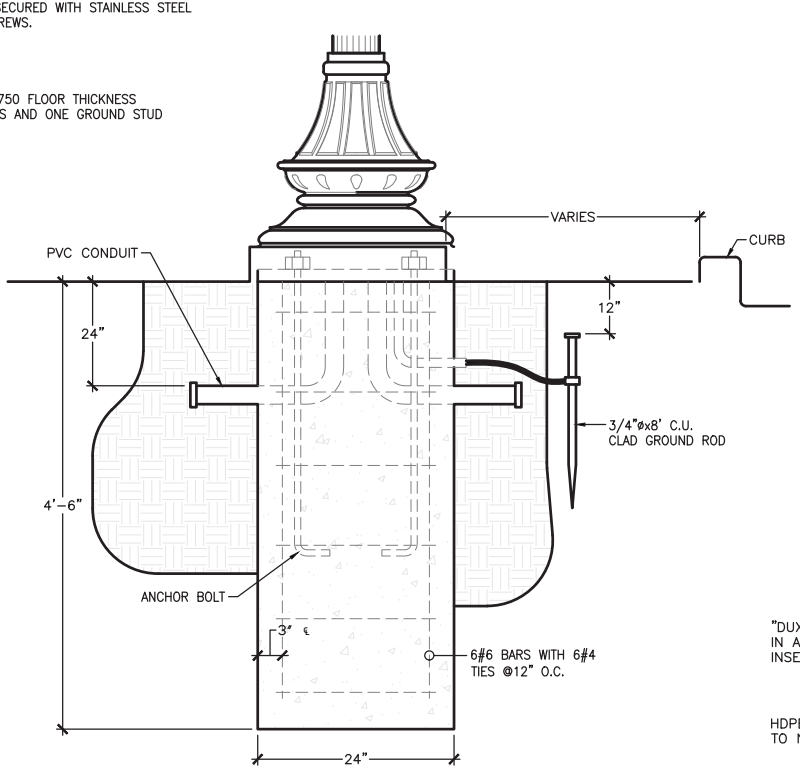


BRANCH PANEL NAME	VOLTAGE	PHASE	WIRE	BUS SIZE	MAIN OCP	AIC RATING
PANEL A	120/ 240	1	3	100 A	100	10,000
100% NEUTRAL CODE: L=LIGHTING, R=RECEPTACLE, M=MOTOR, E=EQUIPMENT, LUSH MOUNTING TRIM						
NEMA 3R COPPER GROUND BAR FEED THRU LUGS						
LOAD	COOR	COOR	COOR	COOR	COOR	LOAD
LIGHT POLE CKT1	L 2	20	1	1,400		LIGHT POLE CKT2
	L		3	700		
	M 1	20	6			
	M 2	20	7			
	M 2	20	9			
	M 2	30	11			
2,100	PHASE A	RECEPT-W @	per NEC	TCL VA		2,100
0	PHASE B	LIGHTS-W @	100%	DEMAND VA		0
		MOTOR-W @	95%	HI-PH CONN. A		18
2,100	TCL	EQUIP-VA @	100%	DEMAND A		0

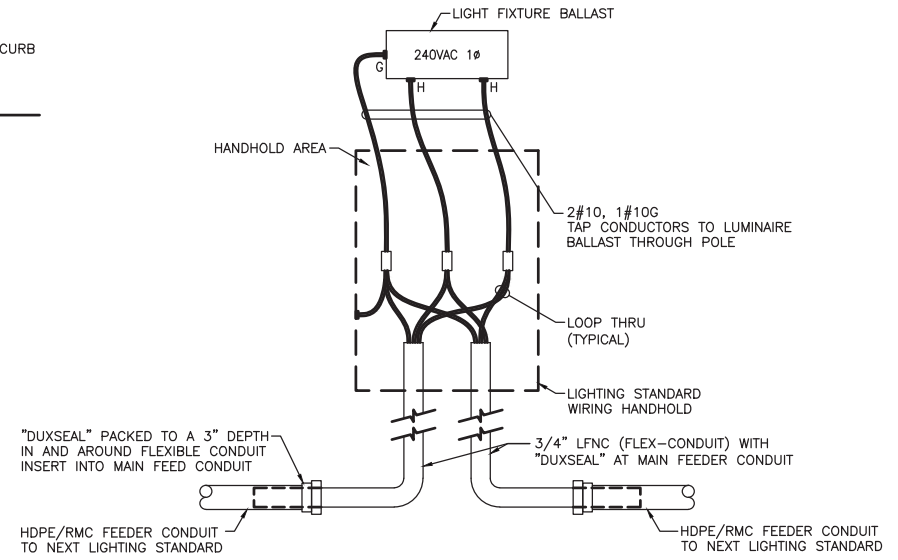
MARK	MANUFACTURER	CATALOG	LAMPS TYPE	INPUT WATTS	FINISH	MOUNTING	REMARKS
A	STERNBERG	A880ASRLED/5PBD4PT/4210FP4/4ARC45T3/MLBKT	LED Color 4500K	66	Black	Pole	TYPE 3 DISTRIBUTION, 4" FLUTED 10' TALL ALUMINUM POLE.



4 STREET LIGHT WIRING DETAIL
E2.X SCALE: N.T.S.



2 POLE BASE MOUNTING DETAIL
E2.X SCALE: N.T.S.



3 STREET LIGHT WIRING DETAIL
E2.X SCALE: N.T.S.

1 POLE DETAIL
E2.X SCALE: N.T.S.

DWG: I:\1223700_Cad\VE\1223700_E6.dwg
 SAVE DATE: 3/9/2015 12:41:48 PM
 PLOT DATE: 3/9/2015 5:58:16 PM
 OPERATOR: RASHRAFZADEH

NO.	REVISIONS DESCRIPTION	DATE
1	ADDENDUM #1	3/4/15

ENGINEER'S SEAL

STATE OF MISSOURI
JOHN C. FRISCH
PROFESSIONAL ENGINEER
NO. 15-2007020209
7/15/2014

PLAN / PLAN SHEET

LITZINGER ROAD IMPROVEMENTS

BRENTWOOD, MISSOURI

PREPARED BY: **HORNER & SHIFRIN, INC. ENGINEERS**

FILE: 1223700 SHEET E6

Discipline: Professional Engineering
Certificate of Authority: 000159
Expiration Date: December 31, 2014

ZIP CODE OF SITE: 63144