



**TAYLOR ENGINEERING, L.L.C.**

**109 E. COLUMBIA - P.O. BOX 674  
FARMINGTON, MO 63640**

**(573) 756-9226 - FAX (573) 756-7310**

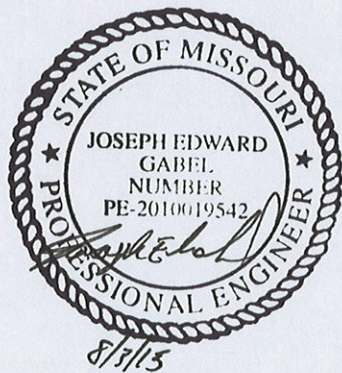
City of Ste. Genevieve, Missouri  
Ste. Genevieve River Beautification & Hiking Trail  
PROJECT NUMBER: STP-9900(025)

**ADDENDUM #3**

The above referenced project is to be amended as follows:

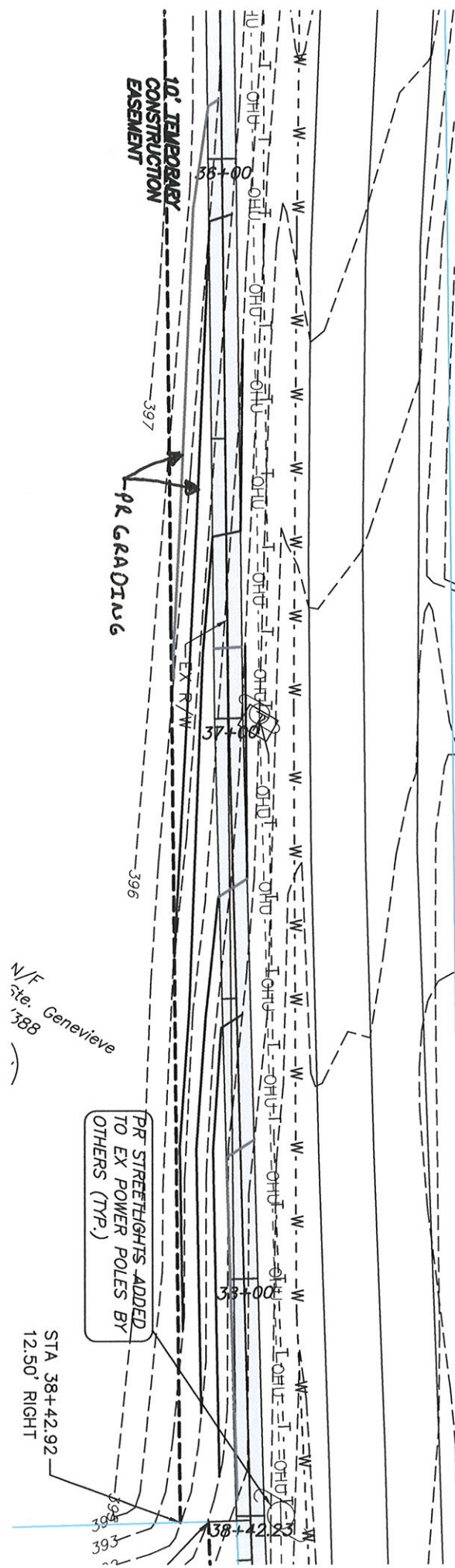
1. Please replace original bid tab with the one provided and add the alternate bid tab to the bid documents. The City will accept alternate bids to construct the Hiking Trail using concrete for the entire trail. The contractor shall only submit one bid tab. Either the original bid tab or the alternate bid tab. The lowest, responsive bid will be accepted.
2. If submitting original bid tab, all ADA ramps shall be constructed with concrete.
3. JSP section F.1.0 - Remove sentence "The Contractor shall provide all original survey field notes and bound survey notebooks to the City upon completion of the project."
4. See attached sketch for grading from STA 35+75 - 38+40. Grading on either side of the trail shall be a 3:1 slope to match existing grade.
5. Storm sewer pipe at STA 30+00 shall be CMP.

End Addendum #3



Issued August 3, 2015  
Taylor Engineering, LLC  
P.O. Box 674  
Farmington, MO 63640  
(573) 756 - 9226  
[www.taylorengineeringllc.com](http://www.taylorengineeringllc.com)





BID TAB					
Ste. Genevieve River Beautification - Hiking Trail					
City of Ste. Genevieve					
February 9, 2015 - Revised August 3, 2015					
Item	Description	Quantity		Unit Price	Total Price
1	Mobilization	1	Lump		
2	5' Asphalt Hiking Trail -- Includes Crushed Stone Base, Concrete ADA Ramps & Detectable Warning Pads	5,114	LF		
3	5' Concrete Hiking Trail -- Includes Crushed Stone Base, ADA Ramps & Detectable Warning Pads	1,757	LF		
4	3" Asphaltic Parking Area -- Includes 8" Crushed Stone Base	3,015	SF		
5	3" Asphaltic Driveway Entrance -- Includes 8" Crushed Stone Base	3,969	SF		
6	8" Concrete Driveway Entrance -- Includes Crushed Stone Base	785	SF		
7	3" Asphaltic Roadway Widening-- Includes 8" Crushed Stone Base	122	SF		
8	4" White Pavement Striping	6,680	LF		
9	6" Thick Concrete Headwall	20	LF		
10	8" Thick Concrete Headwall	40	LF		
11	4" Thick Concrete Flume	36	SF		
12	Headwall Rail	18	LF		
13	5' x 6' Open Back Box Inlet	1	EA		
14	4' x 4' Open Back Box Inlet	1	EA		
15	4' x 4' Curb Inlet	2	EA		
16	4' x 3' Grate Inlet	2	EA		
17	12" RCP -- Includes Trenching and Crushed Stone Backfill	29	LF		
18	15" RCP -- Includes Trenching and Crushed Stone Backfill	154	LF		
19	18" CMP -- Includes Trenching and Crushed Stone Backfill	30	LF		
20	18" HDPE -- Includes Trenching and Crushed Stone Backfill	14	LF		
21	24" CMP -- Includes Trenching and Crushed Stone Backfill	37	LF		
22	36" RCP -- Includes Trenching and Crushed Stone Backfill	62	LF		
23	15" CMP FES w/Toe Wall	1	EA		
24	18" CMP FES w/Toe Wall	2	EA		
25	24" CMP FES w/Toe Wall	2	EA		
26	24"X12"X24" Tee including Connections to CMP and RCP Installed & Complete	1	EA		
27	Remove Existing Sidewalk -- Includes Fill, Seed & Mulch	1,738	LF		
28	Trail End Sign w/Pole Installed & Complete	2	EA		
29	Adjust Sanitary Sewer Manhole	1	EA		
30	Clearing and Grubbing	2	AC		
31	Undercut Unsuitable Material and Replace with Compacted Crushed Stone	100	CY		
32	Site Grading	115	CY		
33	Waste Excavation	474	CY		
34	Rock Excavation	20	CY		
35	Seeding and Mulching	3.50	AC		
36	Trim Line Channelizers	100	EA		
37	Traffic Control Signs	75	SF		
38	Flagger	2	EA		
39	Silt Fencing	323	LF		
40	Straw Bale Sediment Trap	16	EA		
				TOTAL	
TOTAL BID WRITTEN:					

ALTERNATE BID TAB FOR ALL CONCRETE HIKING TRAIL Ste. Genevieve River Beautification - Hiking Trail City of Ste. Genevieve August 3, 2015					
Item	Description	Quantity		Unit Price	Total Price
1	Mobilization	1	Lump		
2	5' Concrete Hiking Trail -- Includes Crushed Stone Base, Concrete ADA Ramps & Detectable Warning Pads	5,114	LF		
3	5' Concrete Hiking Trail -- Includes Crushed Stone Base, ADA Ramps & Detectable Warning Pads	1,757	LF		
4	3" Asphaltic Parking Area -- Includes 8" Crushed Stone Base	3,015	SF		
5	3" Asphaltic Driveway Entrance -- Includes 8" Crushed Stone Base	3,969	SF		
6	8" Concrete Driveway Entrance -- Includes Crushed Stone Base	785	SF		
7	3" Asphaltic Roadway Widening-- Includes 8" Crushed Stone Base	122	SF		
8	4" White Pavement Striping	6,680	LF		
9	6" Thick Concrete Headwall	20	LF		
10	8" Thick Concrete Headwall	40	LF		
11	4" Thick Concrete Flume	36	SF		
12	Headwall Rail	18	LF		
13	5' x 6' Open Back Box Inlet	1	EA		
14	4' x 4' Open Back Box Inlet	1	EA		
15	4' x 4' Curb Inlet	2	EA		
16	4' x 3' Grate Inlet	2	EA		
17	12" RCP -- Includes Trenching and Crushed Stone Backfill	29	LF		
18	15" RCP -- Includes Trenching and Crushed Stone Backfill	154	LF		
19	18" CMP -- Includes Trenching and Crushed Stone Backfill	30	LF		
20	18" HDPE -- Includes Trenching and Crushed Stone Backfill	14	LF		
21	24" CMP -- Includes Trenching and Crushed Stone Backfill	37	LF		
22	36" RCP -- Includes Trenching and Crushed Stone Backfill	62	LF		
23	15" CMP FES w/Toe Wall	1	EA		
24	18" CMP FES w/Toe Wall	2	EA		
25	24" CMP FES w/Toe Wall	2	EA		
26	24"x12"x24" Tee including Connections to CMP and RCP Installed & Complete	1	EA		
27	Remove Existing Sidewalk -- Includes Fill, Seed & Mulch	1,738	LF		
28	Trail End Sign w/Pole Installed & Complete	2	EA		
29	Adjust Sanitary Sewer Manhole	1	EA		
30	Clearing and Grubbing	2	AC		
31	Undercut Unsuitable Material and Replace with Compacted Crushed Stone	100	CY		
32	Site Grading	115	CY		
33	Waste Excavation	474	CY		
34	Rock Excavation	20	CY		
35	Seeding and Mulching	3.50	AC		
36	Trim Line Channelizers	100	EA		
37	Traffic Control Signs	75	SF		
38	Flagger	2	EA		
39	Silt Fencing	323	LF		
40	Straw Bale Sediment Trap	16	EA		
				TOTAL	
TOTAL BID WRITTEN:					