



ADDENDUM NUMBER 1

Project Number 70142206

Project Title Independence and Benton Boulevard Intersection
Federal Project No. STP 3434 (402) and TIP No. 611169

County Jackson

ISSUE DATE: January 28, 2016

Bidders are hereby notified that the Bidding and Contract Documents for the above project, for which Bids are to be received on WEDNESDAY, February 3, 2016, are amended as follows:

Information to Bidders The following is provided to Bidders for information only:

- Q1. Please confirm the letters on the metal panels are cut through the plate and not an applied letter of any kind.
- A 1: Lettering and graphics are cut completely through the metal panels.
- Q2. The drawings references "cut channels" at the bottom of the plate. They are depicted differently than the letters. Are these elements rectangular cutouts in the plate or are they applied pieces of steel channel on the face of the panel?
- A2: Lettering and graphics are cut completely through the metal panels.

Drawings

1. Modify Sheet No. 3 – Summary of Quantities as follows **(This sheet is not reissued with this addendum)**:
 - a. Bid item Metal Posts change the quantity of 33 each to the following:

“Metal Posts = 54 Each”

To clarify each “Wall Section” will have two (2) posts which is a total of 54 posts. A single footing can accommodate (1) or (2) posts depending on where the posts are located in along the length of the sign. The bid quantity of 33 concrete post footings remains unchanged.
 - b. Bid item Plasma Cutting (of wall panels) change the quantity of 48 each to the following:

“Plasma Cutting (of wall panels) = 27 Each”

To clarify "Plasma Cutting (of wall panels)": A total of 27 finished wall panels will be cut from the 20-4'x8' weathering steel sheets that are in the bid item "Wall (4'x8' Panels)". The bid quantity per each for this item shall include all plasma cutting and other fabrication required to transform the 20 sheets into the final 27 panels.

2. Modify Sheet No. 10 thru 13 as follows:
 - a. A legend and cross hatching have been added to these sheets to clarify the locations of the bid items for "4" Concrete Sidewalk", "Sidewalk Ramps" and "Concrete Paver w/ 4" and 8" concrete & gravel base" and to show that there is no overlap between these items. **Refer to attached sheets 10 thru 13, reissued in their entirety.**
3. Modify Sheet No. 55 (L201) – Independence and Benton Details as follows **(This sheet is not reissued with this addendum)**:
 - a. On the Detail 3 – Concrete Sidewalk in the lower left hand corner change the callout from "6x6, 1.4x1.4 WWF" to the following:

"6x6-W2.9xW2.9 WWF."
4. Modify Sheet No. 57 (L203) as follows **(This sheet is not reissued with this addendum)**:
 - a. On the Detail 1 – Tile Lettering - Plan, the following information is to be added: The tiles shall be porcellaneous tile, white background white tile with blue lettering outlined in a cream/yellow color edge. Non-glazed tile with full depth color for each color. Color shall not be painted onto the surface.
5. Modify Sheet No. 58 (L204) as follows:
 - a. On the Detail 4 – Boulevard Access Panel, clarify as follows: This is a detail for the Bronze Plaque(s) and not the access panel. New details have been provided as part of this addendum for the access panel. Official artwork will be provided to the selected contractor of the Bronze Plaque which will specify all wording to include in the plaque.
 - b. Added Detail 5 – Bronze Access Panel - Details, add two new details showing the maintenance access panel to be located at the top of each marker. The maintenance access panel is subsidiary to the bid item "Boulevard Marker". **Refer to attached sheet 58, reissued in its entirety.**
6. Modify Sheet No. 60 (L206) – Independence and Benton Details as follows **(This sheet is not reissued with this addendum)**:
 - a. On the Detail 3 – Parking Edge and Sign Wall Section in the upper right hand corner change the callout from "2" Sq Steel Tube mounted in" to the following:

"2¹/₂"x2¹/₂"x1¹/₄" Sq Steel Tube mounted in"

7. Modify Sheet No. 72 – Traffic Control Plan – Phase 5 Construction as follows **(This sheet is not reissued with this addendum)**:

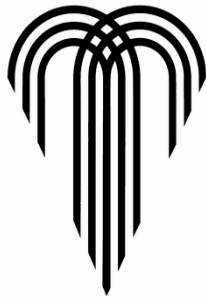
- a. In the notes in the upper right hand corner for “Phase 5 Activities” replace the note with the following:

“Construct Milling, Overlay and Pavement Marking. Use Traffic Control Standard for One-Lane Closure. Maintain at least one lane in each direction on Independence Boulevard at all times.”

Specifications

Replace Section 00412 Unite Prices, attached. The Unit Prices form has been revised by this addendum to change the quantities for bid items 35 and 36.

NOTE: Bidders must acknowledge receipt of this Addendum by listing the number and date, where provided, on the Bid Form - Document 00410.

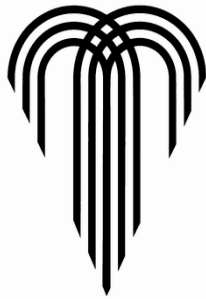
CITY OF FOUNTAINS
HEART OF THE NATIONKANSAS CITY
MISSOURI**UNIT PRICES****PROJECT NO. STP 3434 (402)****PROJECT TITLE: Independence Blvd. & Benton Blvd. Intersection****NOTE: IN THE EVENT OF DISCREPANCY, UNIT PRICE SHALL GOVERN.**

Item No.	Unit	Quantity	Item Description:	Unit	Extension
			GENERAL		
1.	LS	1	G - Mobilization		
2.	LS	1	G - Staking		
3.	EA	1	G- Field Office		
			DEMOLITION		
4.	LS	1	D - Removals		
			TRAFFIC CONTROL		
5.	SF	209	TC - Construction Signs		
6.	SF	292	TC - Relocated Signs		
7.	EA	20	TC - Channelizer		
8.	EA	1	TC - Type III Moveable Barricade with Lights		
8.	EA	5	TC - Type II Moveable Barricade		
9.	LF	2583	TC - Preformed Removable Marking Tape 4 inches (White)		
10.	LF	1966	TC - Preformed Removable Marking Tape 4 inches (Yellow)		
11.	LF	157	TC - Preformed Removable Marking Tape 24 inches (White)		
12.	LF	764	TC - Pavement Marking Removal		
13.	EA	6	TC - Proximity Activated Voice Device		
			PAVING		
14.	SY	3996	P - Asphaltic Concrete Surface Course (Type 301) (2")		
15.	SY	300	P - Concrete Base (9")		
16.	SY	3682	P - 2" Milling		
17.	SY	27	P - Bituminous Pavement Patch (Parking Lot)		
			PAVERS & CONCRETE		
18.	SF	2486	P&C - Commercial Entrance (Type VI)		
19.	SF	5400	P&C - Concrete Paver w/4" concrete & gravel base (sand set)		
20.	SF	780	P&C - Concrete Paver w/8" concrete & gravel base (sand set)		
21.	SF	2600	P&C - 4" Concrete Sidewalk		
22.	SF	1100	P&C - Sidewalk Ramps		
23.	LF	882	P&C - Concrete Curb PS1		
24.	LF	465	P&C - Concrete Curb PS1 (Modified)		
25.	LF	156	P&C - Tree Well Curb		
26.	LF	450	P&C - Edge Restraint Curb (8")		
27.	EA	6	P&C - Concrete Median Nose		
28.	EA	8	P&C - Clay Tile Lettering (Street Names) 8 Locations		
29.	EA	33	P&C - Metal Post Wall Footings		
30.	EA	2	P&C - BMP Basin		

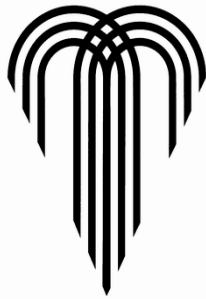
			STONE MASONRY		
--	--	--	----------------------	--	--

CITY OF FOUNTAINS
HEART OF THE NATIONKANSAS CITY
MISSOURI**UNIT PRICES****PROJECT NO. STP 3434 (402)****PROJECT TITLE: Independence Blvd. & Benton Blvd. Intersection****NOTE: IN THE EVENT OF DISCREPANCY, UNIT PRICE SHALL GOVERN.**

Item No.	Unit	Quantity	Item Description:	Unit	Extension
31.	LF	18	SM - Seat Walls & Cap (w/footing)		
32.	EA	12	SM - Wall Pedestals & Caps (w/footing)		
33.	EA	2	SM - Boulevard Marker		
			METAL FABRICATION		
34.	EA	20	MF - Wall (4'x8' Panels)		
35.	EA	54	MF - Wall Metal Posts		
36.	EA	27	MF - Plasma Cutting (of wall panels)		
37.	EA	9	MF - BMP Grates (24" x 1" x 12" w panel)		
			SITE FURNISHINGS		
38.	EA	4	SF - Trash Receptacles		
			RELOCATIONS		
39.	EA	1	R - Fire Hydrant (Relocation)		
			STORM SEWERS		
40.	LF	151	SS - 12" Class III RCP		
41.	EA	5	SS - 5' x 3' Curb Inlet		
42.	EA	2	SS - 4' x 4' Junction Box		
43.	EA	1	SS - Grate Inlet		
			STREET LIGHTING		
44.	EA	3	SL - 30 Foot Dark Bronze Aluminum Pole		
45.	EA	4	SL - Screw Anchor Base for 30' Light Pole		
46.	EA	7	SL - Type II Junction Box KCMO		
47.	EA	1	SL - Lighting Controller - Pad Mounted		
48.	EA	1	SL - Lighting Controller Foundation		
49.	EA	1	SL - Ground Rod for Lighting Controller		
50.	EA	4	SL - Ground Rod for Light Pole		
51.	EA	1	SL - Photo Cell		
52.	EA	3	SL - Shoe Box 250 W HPS, 240 V, Type III		
53.	EA	6	SL - 400 Watt Cobra Head		
54.	EA	2	SL - 250 Watt Cobra Head		
55.	EA	750	SL - 2" Schedule 40 PVC Conduit		
56.	LF	850	SL - 3c #4 Distribution Cable		
57.	LF	900	SL - 1c #10 Pole & Bracket Cable		
58.	EA	4	SL - 6" Anti-theft Cable Retainer		
59.	LF	670	SL - Trench and Backfill		
60.	EA	10	SL - Conduit Markers		
61.	EA	30	SL - Wire Connectors at Pole Base		
62.	EA	6	SL - ID Tags		
63.	EA	20	SL - Connector Kit, Fused		
64.	EA	10	SL - Connector Kit, Unfused		
65.	LF	45	SL - Trench and Backfill (For Service Conduit System)		
66.	LF	60	SL - 3" PVC for Service Conductors		
67.	LF	240	SL - 1c #2 for Service		
68.	EA	1	SL - Light Pole Relocation		

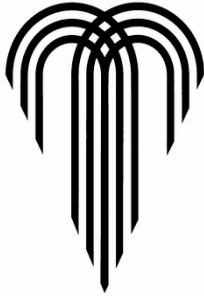
CITY OF FOUNTAINS
HEART OF THE NATIONKANSAS CITY
MISSOURI**UNIT PRICES****PROJECT NO. STP 3434 (402)****PROJECT TITLE: Independence Blvd. & Benton Blvd. Intersection****NOTE: IN THE EVENT OF DISCREPANCY, UNIT PRICE SHALL GOVERN.**

Item No.	Unit	Quantity	Item Description:	Unit	Extension
69.	LF	80	SL - Bore Conduit (2")		
70.	LF	15	SL - Bore Conduit (3")		
			DECORATIVE LIGHTING		
71.	EA	6	DL - 14.5 Feet Aluminum Pole		
72.	EA	6	DL - Screw Anchor Base for 14.5 foot Light Pole		
73.	EA	2	DL - Architectural Flood		
74.	EA	17	DL - Inground LED		
75.	EA	10	DL - Type II Junction Box KCMO		
76.	EA	1	DL - Lighting Controller - Pad Mounted		
77.	EA	1	DL - Lighting Controller Foundation		
78.	EA	1	DL - Ground Rod for Lighting Controller		
79.	EA	6	DL - Ground Rod for Light Pole		
80.	EA	1	DL - Photo Cell		
81.	EA	6	DL - Decorative Luminaire, 70 W HPS, 240 V		
82.	LF	125	DL - 3/4" Schedule 40 PVC Conduit		
83.	LF	650	DL - 2" Schedule 40 PVC Conduit		
84.	LF	700	DL - 3c #8 Distribution Cable		
85.	LF	270	DL - 1c #10 Pole & Bracket Cable		
86.	LF	150	DL - 3c #10 Distribution Cable		
87.	EA	6	DL - 4" Anti-theft Cable Retainer		
88.	LF	650	DL - Trench and Backfill		
89.	EA	8	DL - Conduit Markers		
90.	EA	18	DL - Wire Connector at Pole Base		
91.	EA	12	DL - Connector Kit, Fused		
92.	EA	6	DL - Connector Kit, Unfused		
93.	LF	15	DL - Bore Conduit (3")		
94.	LF	45	DL - Trench & Backfill (For Service Conduit System)		
95.	LF	60	DL - 3" PVC for Service Conductors		
96.	LF	240	DL - 1c #2 for Service		
			TRAFFIC SIGNAL		
97.	EA	1	TS - Power Supply (Type 332L)		
98.	EA	1	TS - Signal Controller (Type ASC/3 RM)		
99.	CY	14	TS - Concrete for Base		
100.	EA	5	TS - Type II Pull Box		
101.	EA	2	TS - Mast Arm Length 38 feet		
102.	EA	1	TS - Mast Arm Length 26 feet		
103.	EA	1	TS - Mast Arm Length 28 feet		
104.	EA	1	TS - Lighting Pole		
105.	EA	3	TS - Pedestals		
106.	EA	16	TS - Signal Heads 3 Section		
107.	EA	2	TS - Signal Heads 5 Section		
108.	EA	8	TS - Push Button Detector w/signs		
109.	EA	8	TS - Countdown Pedestrian Signal Heads		

CITY OF FOUNTAINS
HEART OF THE NATIONKANSAS CITY
MISSOURI**UNIT PRICES****PROJECT NO. STP 3434 (402)****PROJECT TITLE: Independence Blvd. & Benton Blvd. Intersection****NOTE: IN THE EVENT OF DISCREPANCY, UNIT PRICE SHALL GOVERN.**

Item No.	Unit	Quantity	Item Description:	Unit	Extension
110.	EA	4	TS - Video Detection Camera		
111.	EA	4	TS - Opticom		
112.	EA	1	TS - PTZ Camera		
113.	EA	4	TS - Internally Illuminated Street Name Sign		
114.	EA	5	TS - 400 Watt HPS Luminaire and 6' arm		
115.	LF	727	TS - 2" Trenched Conduit		
116.	LF	1410	TS - 3" Trenched Conduit		
117.	LF	606	TS - 4" Trenched Conduit		
118.	LF	32	TS - 1c #8 Power Cable		
119.	LF	1345	TS - 3c #8 Power Cable (Lighting)		
120.	LF	210	TS - 2c #10 Power Cable (Lighting)		
121.	LF	2269	TS - 5c #14 Signal Cable		
122.	LF	4354	TS - 7c #14 Signal Cable		
123.	LF	3541	TS - 2c #14 Det. Lead-In Cable		
124.	LF	1936	TS - Fiber Optic Cable (96 count with tracer wire)		
125.	LF	302	TS - 3" Fiber Optic Conduit		
126.	EA	2	TS - Internet 1000mbps Ethernet Switch		
127.	EA	2	TS - Interconnect Underground Splice Enclosure with up to 8 splices each		
128.	EA	44	TS - Splices		
129.	EA	2	TS - Interconnect 8 fiber LC port portable fiber optic interface panel with 200 ITS drop cable		
130.	EA	2	Type III Pull Box		
131.	LF	1390	TS - 3c #16 Video Cable		
132.	LF	1390	TS - Coax Video Cable		
133.	LF	421	TS - PTZ Camera Cable		
			PAVEMENT MARKING & SIGNING		
134.	LF	817	PM&S - 4" White Solid Thermoplastic Pavement Marking		
135.	LF	100	PM&S - 6" White Solid Thermoplastic Pavement Marking		
136.	LF	360	PM&S - 24" White Solid Thermoplastic Pavement Marking		
137.	LF	399	PM&S - 4" Yellow Solid Thermoplastic Pavement Marking		
138.	EA	5	PM&S - White Cold Plastic Left Turn Arrow		
139.	EA	2	PM&S - White Cold Plastic Right Turn Arrow		
140.	EA	4	PM&S - White Cold Plastic "BIKE" Symbol		
141.	SF	51	PM&S - Traffic Signs		
142.	EA	14	PM&S - Sign Post		
			LANDSCAPING		
143.	EA	10	L - Green Vase Zelkova (4" Cal)		
144.	EA	69	L - Bonanza Gold Barberry (1 gal)		
145.	EA	137	L - Green Mound Juniper (1 gal)		

CITY OF FOUNTAINS
HEART OF THE NATION



KANSAS CITY
MISSOURI

UNIT PRICES

PROJECT NO. STP 3434 (402)

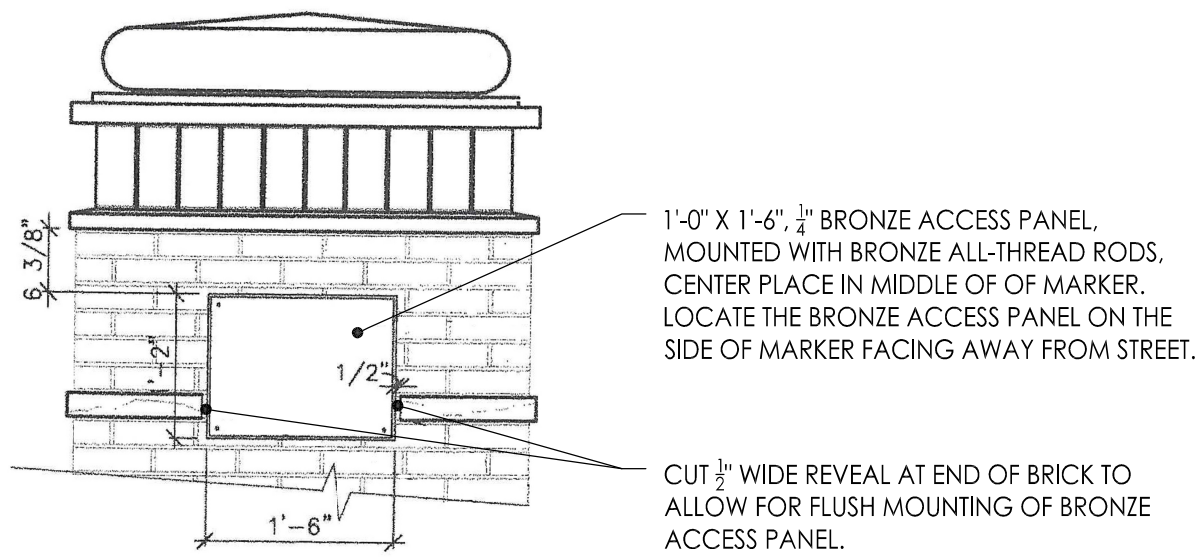
PROJECT TITLE: Independence Blvd. & Benton Blvd. Intersection

NOTE: IN THE EVENT OF DISCREPANCY, UNIT PRICE SHALL GOVERN.

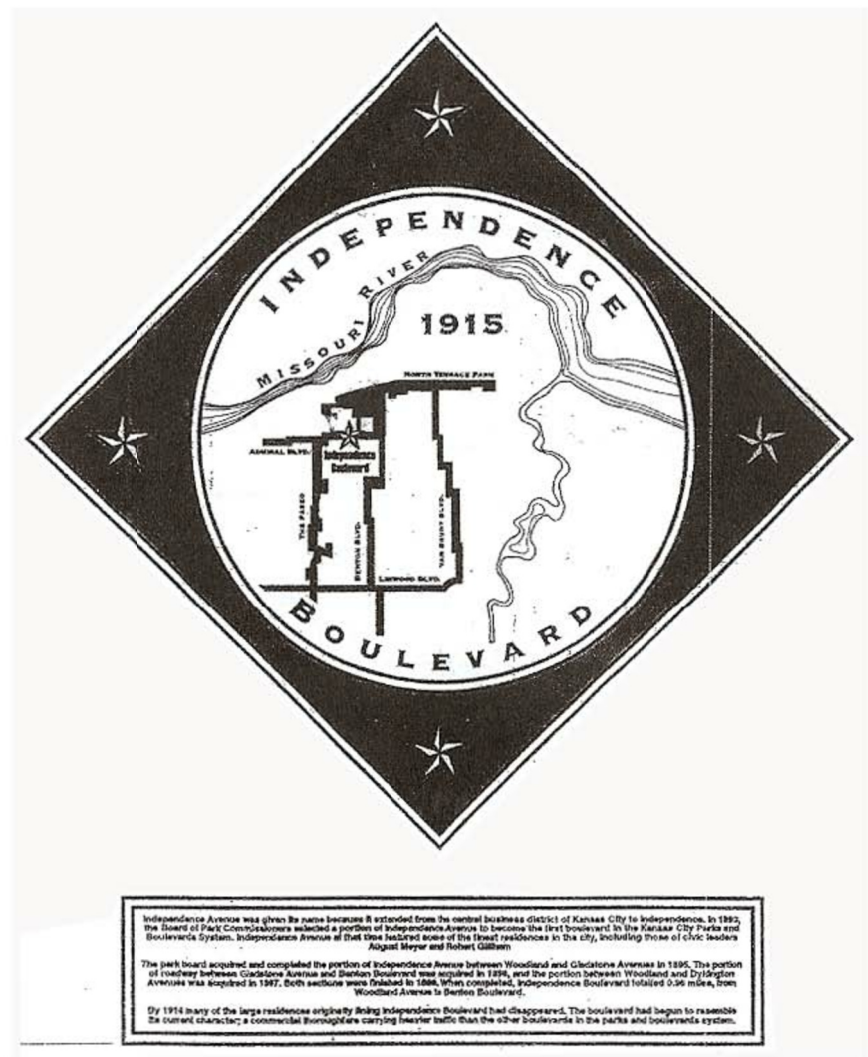
Item No.	Unit	Quantity	Item Description:	Unit	Extension
146.	EA	541	L - Scouring Rush Horsetail (1 gal)		
147.	CY	63	L - BMP Soils		
148.	CY	13	L - BMP Gravel Base		
149.	CY	4	L - BMP Sand Layer		
150.	LF	144	L - Sub-Drainage Piping (4" Solid); filter fabric wrapped		
151.	EA	18	L - Sub-Drainage Cleanouts		
152.	LF	515	L - Sub-Drainage Piping (4" Perf); filter fabric wrapped		
153.	CY	65	L - Planting Soil Mix		
154.	TON	4	L - Decorative Rock (Road BMP's); 200 sf @ 4" depth		
155.	SF	5000	L - Turf Seed		
156.	SF	2000	L - Filter Fabric		
Total Unit Prices: (LAST PAGE ONLY)					

Note: May be printed, for manual fill-in, or filled in on electronic excel spreadsheet version.

G:\Archive\2010\1050-Independence at Benton Blvd\Drawings\Current\L2004-206_Details.dwg 1/28/2016 11:49:47 AM 0.369:1 BRIAN ROTH

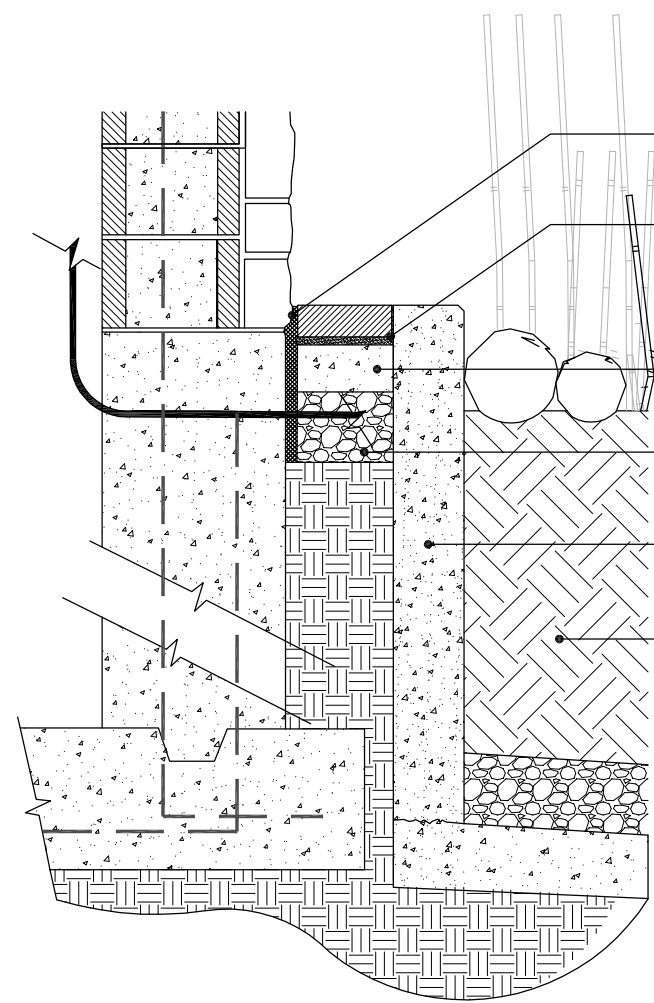


5 BRONZE ACCESS PANEL - DETAILS
SCALE: NTS



4 BRONZE PLAQUE - ACCESS PANEL
SCALE: 1/2"=1'-0"

ELECTRICAL NOTE
RE: SHEET # 25 FOR ALL LIGHTING



NORTH BLVD MARKER @ BMP - SECTION

2 BOULEVARD MARKER-SECTION
SCALE: 3/4"=1'-0"

WEATHERPROOF, WALL MOUNTED FLOOD LIGHT
- 70 WATT, ADJUSTABLE ARM, BY GENERAL ELECTRIC
- WALL MOUNT INSIDE MONUMENT PER MANUFACTURER RECOMMENDATIONS
- CONTRACTOR TO PROVIDE SHOP DRAWINGS FOR REVIEW
- RE: SHEET #25 PER STREETLIGHT LAYOUT PLAN

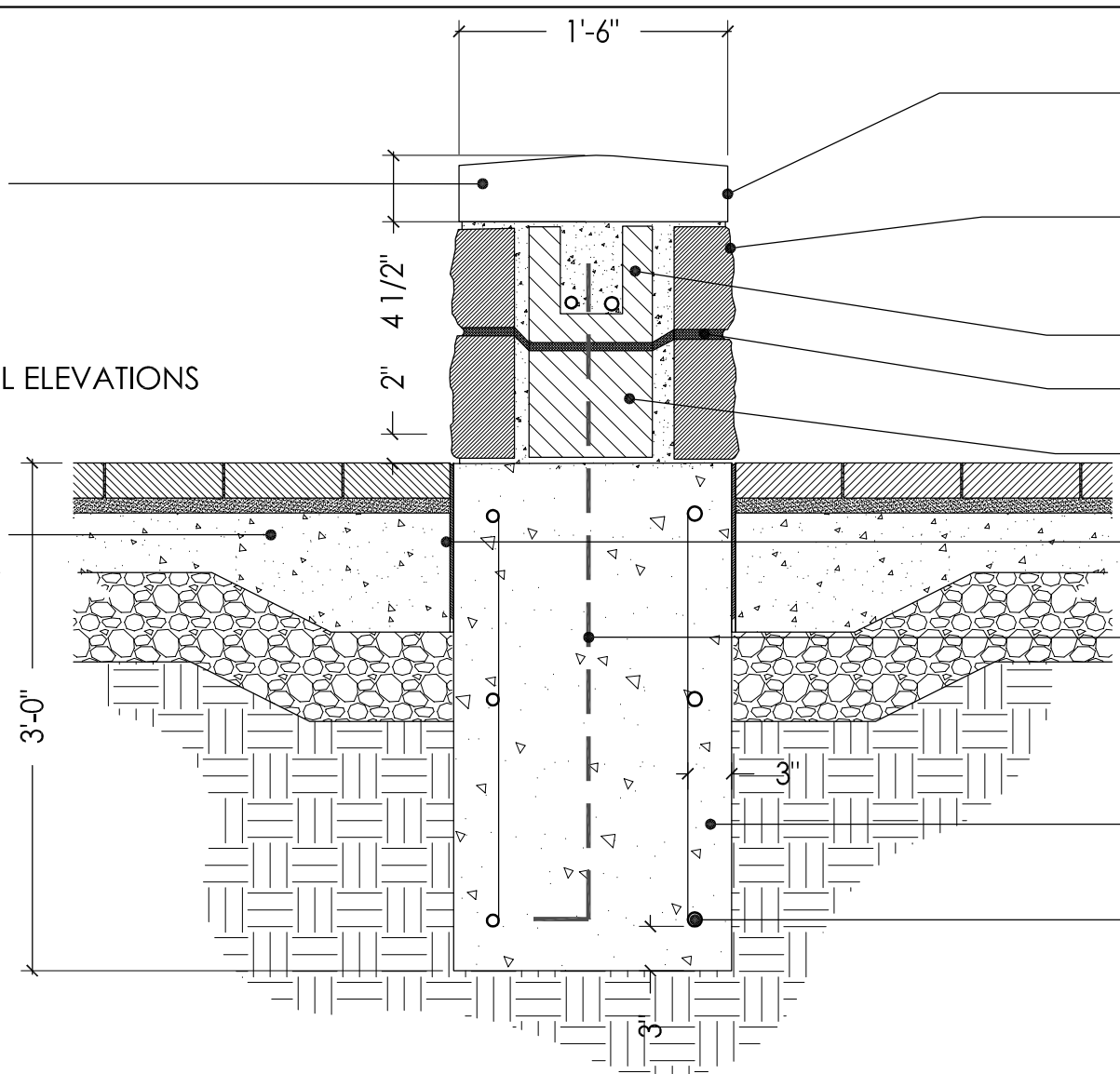
EXPANSION JOINT
RE: SHEET #13
(1) 8"X8" CONCRETE PAVER & SETTING BED
RE: SPEC 02515 - UNIT PAVERS
CONCRETE SIDEWALK
RE: 3/L301
COMPACTED SUBGRADE
CRUSHED AGGREGATE
BMP BASIN
RE: 1/L202
BMP SECTION
RE: 1/L202

4" X 8" X 16" CMU BLOCK (TYP)
12" X 8" X 16" CMU BLOCK (TYP)
#4 REBAR @ CORNERS (20" MIN LAPS)
WITH ALL CELLS FULLY GROUTED
ELECTRIC CONDUIT
RE: SHEET #25
#4 REBAR @ 1' O.C.
VERTICAL EACH FACE WITH STANDARD HOOKS INTO FOOTING
5'X5'X1' FOOTING
W/ #4 REBAR @ 12" O.C., BOTH WAYS

1b BOULEVARD MARKER-SECTION
SCALE: 3/4"=1'-0"

MORTAR
RAKE AND CAULK ALL HORIZONTAL JOINTS IN CUT LIMESTONE CAP
NOTE:
RE: GRADING PLANS FOR SEAT WALL ELEVATIONS

CONCRETE SIDEWALK W/ THICKENED EDGE
RE: 3/L201



3 SEATWALL SECTION
SCALE: 1"=1'-0"

CUT LIMESTONE CAP
2 X 2 1/4" STEEL FRAME
VERTICAL SUPPORT AT CORNERS ONLY, BOLT STONE TO FRAME W/ CUPS AS REQUIRED
GLASS BLOCK - 4" X 8" DECORA BY PPG
1/4" MORTAR JOINTS
CUT LIMESTONE CAP W/ 1/4" SLOPE MIN

SPLITFACE LIMESTONE BRICK
WITH MITRED CORNERS (TYP)

8" X 8" X 16" CMU BLOCK (TYP)
WITH ALL CELLS FULLY GROUTED
NON-CORRESSIVE CORRUGATED TIE (TYP)

VENEER BRICK
RUNNING BOND
FLEXIBLE THROUGH WALL FLASHING
WITH COTTON WICKS, 16" O.C.

CUT LIMESTONE CAP
CAULK ALL JOINTS AT SILL CAP

12" BOND BEAM
CMU BLOCK
4" THICK NATIVE KANSAS LIMESTONE VENEER
MORTAR IN PLACE, COLOR TO BE APPROVED BY OWNER'S REP.

NON-CORRESSIVE CORRUGATED TIE (TYP)
CONCRETE PAVER & SETTING BED
RE: SPEC 02515 - UNIT PAVERS
FINISH GRADE

CONCRETE SIDEWALK
RE: 3/L201

#4 REBAR
HORIZONTAL STIRRUP BARS EACH FACE, 12" O.C.

16" CONCRETE STEMWALL
2" X 4" CONCRETE KEY

CENTER OF COLUMN

CUT LIMESTONE CAP
MORTAR IN PLACE;
RE: SPEC 04860 - STONE VENEER ASSEMBLIES
ROUGH CUT NATIVE KANSAS LIMESTONE
4" THICK VENEER SET IN MORTAR;
RE: SPEC 04860 - STONE VENEER ASSEMBLIES
BOND BEAM CMU BLOCK
NON CORROSIVE CORRUGATED TIE
CMU BLOCK

EXPANSION JOINT
WITH BACKER ROD AND SEALANT

#4 REBAR
EXTEND INTO SEAT WALL BASE, 1'-2" WITH STANDARD HOOK

CONCRETE FOOTING

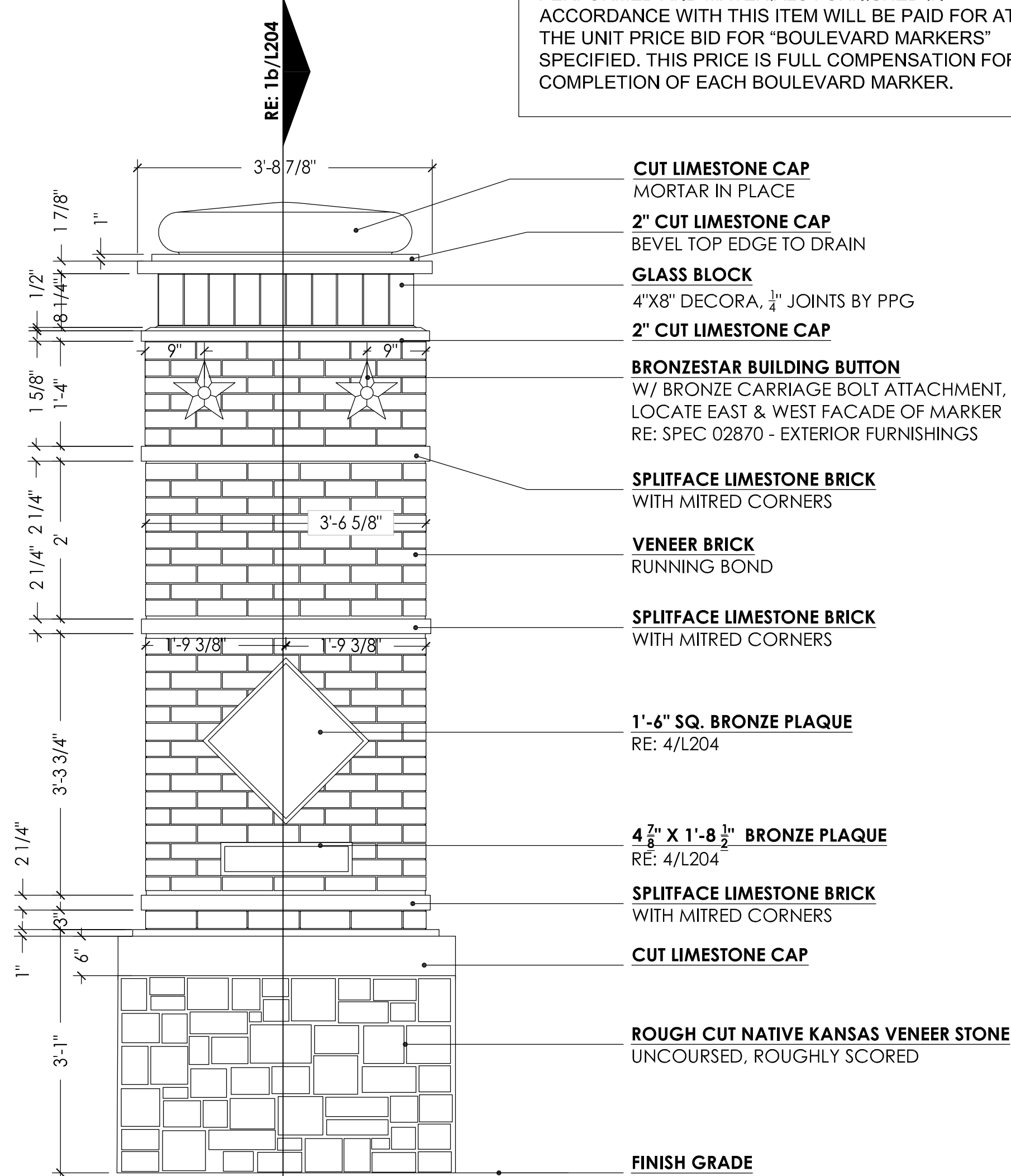
#4 REBAR
12" O.C. HORIZONTAL
18" O.C. VERTICAL

STATE	PROJECT NO.	YEAR	SHEET NO.
MO.	70142206	2014	

FEDERAL PROJ. NO. STP 3434(402)

MEASUREMENT & METHOD OF PAYMENT
SEATWALLS & CAP (W/FOOTING) WILL BE MEASURED BY LINEAR FOOT. THE WORK PERFORMED AND MATERIALS FURNISHED IN ACCORDANCE WITH THIS ITEM WILL BE PAID FOR AT THE UNIT PRICE BID FOR "SEATWALLS & CAP (W/FOOTING)" SPECIFIED. THIS PRICE IS FULL COMPENSATION FOR PROVIDING AND INSTALLING ALL COMPONENTS OF THE SEATWALL INCLUDING BUT NOT LIMITED TO CAPS, VENEER STONE, MASONRY, REINFORCEMENT AND SUBGRADE PREP.

MEASUREMENT & METHOD OF PAYMENT
BOULEVARD MARKERS WILL BE MEASURED BY LUMP SUM FOR EACH INDIVIDUAL MARKER. THE WORK PERFORMED AND MATERIALS FURNISHED IN ACCORDANCE WITH THIS ITEM WILL BE PAID FOR AT THE UNIT PRICE BID FOR "BOULEVARD MARKERS" SPECIFIED. THIS PRICE IS FULL COMPENSATION FOR COMPLETION OF EACH BOULEVARD MARKER.



1a BOULEVARD MARKER - ELEVATION
SCALE: 3/4"=1'-0"



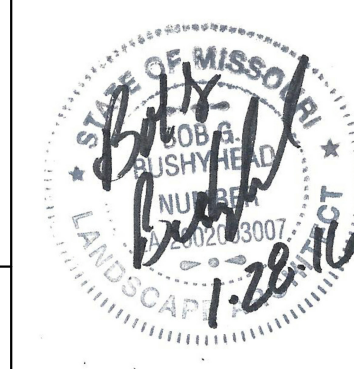
CITY OF KANSAS CITY, MISSOURI
INDEPENDENCE BLVD DESIGN

INDEPENDENCE & BENTON
DETAILS

LOCHNER
903 East 104th Street, Kansas City, MO 64131-3451

Detailed By: Drawn By:
Checked By: BDR Scale:

File No.



Sheet No. L204

I:\KACADD\Modot\Lochner Variables\Fen Tables\Modot Structural.tbl
I:\KACADD\Modot\Lochner Variables\Plot Config\Modot_PDF_EngBWFull.plt
I:\KAC\PRJ\000009238\01 - Project\Preliminary_and_ROW_Plans\001050333_Final_Plans\10-70142206-Det-Ramps2.dgn

STATE	PROJECT NO.	YEAR	SHEET NO.
MO.	70142206	2014	

FEDERAL PROJ. NO. STP 3434(402)

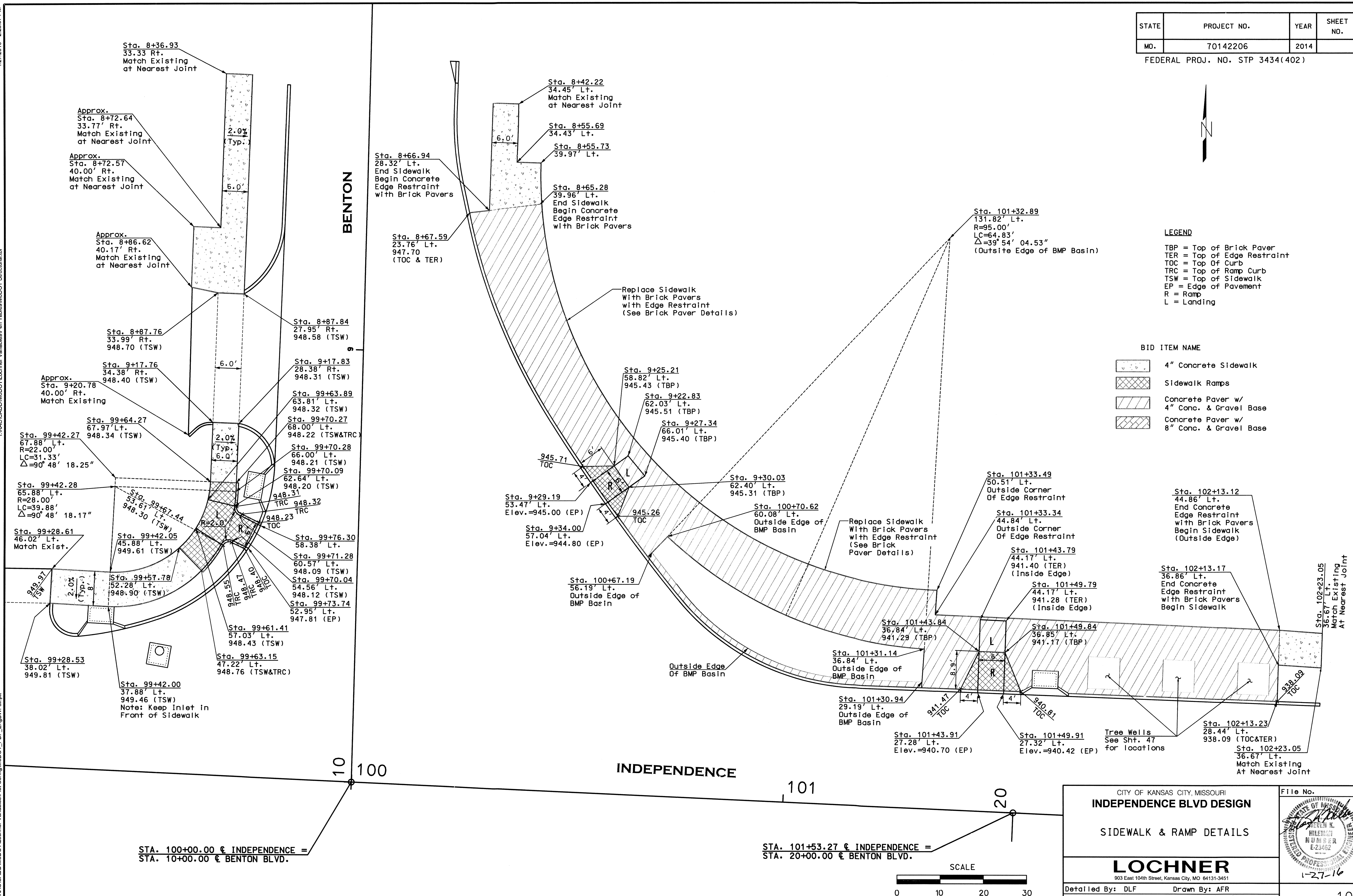


LEGEND

TBP = Top of Brick Paver
TER = Top of Edge Restraint
TOC = Top of Curb
TRC = Top of Ramp Curb
TSW = Top of Sidewalk
EP = Edge of Pavement
R = Ramp
L = Landing

BID ITEM NAME

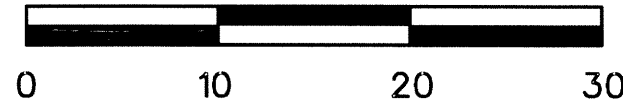
- 4" Concrete Sidewalk
- Sidewalk Ramps
- Concrete Paver w/
4" Conc. & Gravel Base
- Concrete Paver w/
8" Conc. & Gravel Base



STA. 100+00.00 @ INDEPENDENCE =
STA. 10+00.00 @ BENTON BLVD.

STA. 101+53.27 @ INDEPENDENCE =
STA. 20+00.00 @ BENTON BLVD.

SCALE

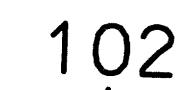


CITY OF KANSAS CITY, MISSOURI INDEPENDENCE BLVD DESIGN		LOCHNER 903 East 104th Street, Kansas City, MO 64131-3451	File No. 1-27-16
SIDEWALK & RAMP DETAILS			
Detailed By: DLF	Drawn By: AFR	Sheet No. 10R	
Checked By: CMS	Scale: 1"=10'		







BENTON

22

FEDERAL PROJ. NO. STP 3434(402)

TBP = Top of Brick Paver
TER = Top of Edge Restraint
TOC = Top Of Curb
TRC = Top of Ramp Curb
TSW = Top of Sidewalk
EP = Edge of Pavement
R = Ramp
L = Landing

	4" Concrete Sidewalk
	Sidewalk Ramps
	Concrete Paver w/ 4" Conc. & Gravel Base
	Concrete Paver w/ 8" Conc. & Gravel Base

SIDEWALK & RAMP DETAILS

903 East 104th Street, Kansas City, MO 64131-3451

[Signature]

STATE OF MINNESOTA
JULIAN L.
MINNEAPOLIS
NUMBER
E-23602

Sheet No. 11R

STATE	PROJECT NO.	YEAR	SHEET NO.
MO.	70142206	2014	

FEDERAL PROJ. NO. STP 3434(402)

NORTH ISLAND CURVE DATA						
ALL POINT LOCATIONS ARE OFF of CURB UNLESS OTHERWISE NOTED						
Island		Location	Station	Offset	Elevation	
4a	R	1.00'	PC	20+50.50	9.16' Lt.	940.81
	L	1.50'	Mid-Point	20+51.06	9.63' Lt.	-
	Δ	85° 41' 52.68"	PCC	20+51.79	9.60' Lt.	940.80
4b	R	2.00'	PCC	20+50.39	2.75' Lt.	*942.25
	L	4.88'	Mid-Point	20+51.88	1.01' Lt.	*942.43
	Δ	139° 47' 00.00"	PCC	20+60.77	0.99' Rt.	*942.60
4c	R	1.00'	PC	20+47.27	12.32' Rt.	941.64
	L	1.55'	Mid-Point	20+46.52	12.42' Rt.	-
	Δ	89° 03' 10.51"	PT	20+45.91	11.97' Rt.	941.65
4d	R	1.50'	PC	20+42.76	6.72' Rt.	941.53
	L	1.55'	Mid-Point	20+42.55	5.99' Rt.	941.52
	Δ	59° 19' 34.17"	PT	20+42.73	5.24' Rt.	941.51
Island 5						
5a	R	1.00'	PC	101+44.32	30.20' Rt.	941.33
	L	1.57'	Mid-Point	101+44.02	29.49' Rt.	-
	Δ	89° 46' 27.88"	PT	101+43.31	29.20' Rt.	941.29
5b	R	2.00'	PC	101+40.14	32.88' Rt.	*942.57
	L	4.28'	Mid-Point	101+38.39	33.93' Rt.	*942.74
	Δ	122° 40' 49.43"	PT	101+38.46	35.97' Rt.	*942.90
5c	R	1.00'	PC	101+37.01	40.50' Rt.	941.72
	L	1.55'	Mid-Point	101+37.62	40.94' Rt.	-
	Δ	89° 03' 10.51"	PT	101+38.37	40.82' Rt.	941.74
5d	R	1.75'	PC	101+43.52	37.71' Rt.	941.65
	L	1.81'	Mid-Point	101+44.14	37.07' Rt.	941.64
	Δ	59° 12' 35.06"	PT	101+44.36	36.20' Rt.	941.63
Island 6						
6a	R	1.00'	PCC	101+50.32	30.19' Rt.	941.00
	L	1.57'	Mid-Point	101+50.61	29.48' Rt.	-
	Δ	90° 13' 32.12"	PT	101+51.31	29.18' Rt.	940.96
6b	R	2.00'	PC	101+66.85	32.80' Rt.	*941.38
	L	4.51'	Mid-Point	101+68.66	33.93' Rt.	*941.28
	Δ	129° 17' 08.34"	PT	101+68.41	36.06' Rt.	*941.18
6c	R	1.00'	PC	101+66.72	44.78' Rt.	940.41
	L	1.51'	Mid-Point	101+66.13	45.22' Rt.	-
	Δ	86° 39' 23.97"	PT	101+65.39	45.14' Rt.	940.45
6d	R	1.50'	PC	101+51.15	37.53' Rt.	941.46
	L	1.61'	Mid-Point	101+50.58	36.98' Rt.	-
	Δ	61° 27' 50.77"	PCC	101+50.36	36.21' Rt.	941.49

*NOTE: These Elevations Are at Top Back Of Curb

