

MANCHESTER ROAD PHASE 3 – ADDENDUM #1
City of Maplewood, MO
Federal Project STP-5401(669)
March 8, 2016

This addendum is hereby made part of the contract documents of the above referenced project. This addendum supplements and/or amends the originally issued documents and all related addenda.

Attachments:

- Revised Bid Form
 - Item number 9018245 (Pole Foundations (45 ft. or 13.5 m Mounting Height)) was added with a quantity of 1 Each.
 - Item number 9029100 (Base, Concrete) was modified to 9.6 C.Y.
 - Item number 9019902 (99W LED Light Fixture with 15 Foot Decorative Pole) was modified to (100W LED Light Fixture with 15 Foot Decorative Pole)
- Sheet 2A revised to reflect the updated quantities.
- Sheet C14.1 revised to reflect Pole Foundations (45ft. or 13.5 m Mounting Height).
- Sheet C14.2 revised to reflect changes in Base, Concrete schedule and quantities.
- Sheet E5.1 revised to show updated light fixture and pole catalog numbers.
- Revised Project Specification section V: Exterior Lighting, section 2.3.A.1 (page 70) from 3500K to 4000K to match updated light fixture catalog number.

ACKNOWLEDGEMENT OF ADDENDUM #1

The bidder will acknowledge receipt of this Addendum and acceptance of its conditions by signing this Addendum and including it with the bid.

SIGNATURE: _____

TITLE: _____

COMPANY: _____

DATE: _____

ITEMIZED BID: The bidder should complete the following section in accordance with Sec 102.5. The bidder proposes to furnish all labor, materials, equipment, services, etc. required for the performance and completion of the work, as follows:

**BID ITEMS Project: Manchester Road Phase 3 Improvements
Federal Project No. STP - 5401(669)**

ITEM NUMBER	DESCRIPTION	UNIT	QUANTITY	UNIT PRICE	TOTAL
	ROADWAY ITEMS:				
2013000	CLEARING AND GRUBBING	ACRE	0.5		
2022010	REMOVAL OF IMPROVEMENTS	L.S.	1		
2031000	CLASS A EXCAVATION	C.Y.	1819		
2036000	COMPACTING EMPANKMENT	C.Y.	117		
2069907	HAUL OFF ECESS MATERIAL	C.Y.	1717		
3040504	TYPE 5 AGGREGATE FOR BASE (4 IN. THICK)	S.Y.	2814		
3040506	TYPE 5 AGGREGATE FOR BASE (6 IN. THICK)	S.Y.	793		
3101002	GRAVEL (A)	TONS	28		
4011209	BITUMINOUS PAVEMENT MIXTURE PG64-22, (BP-1)	TONS	253		
4013000	BITUMINOUS PAVEMENT MIXTURE PG64-22, (BASE)	TONS	88		
4071005	TACK COAT	GAL.	217		
4081010	PRIME-LIQUID ASPHALT RC 70 OR MC 30	GAL.	978		
5021107	CONCRETE PAVEMENT (7 IN. NON-REINF)	S.Y.	743		
5021108	CONCRETE PAVEMENT (8 IN. NON-REINF)	S.Y.	1573		
6039902	ADJUST WATER VALVE TO GRADE	EACH	6		
6039922	ADJUST CLEANOUT TO GRADE	EACH	2		
6039932	ADJUST GAS VALVE TO GRADE	EACH	11		
6042010	ADJUST MANHOLE	EACH	2		
6049902	ADJUST ELECTRICAL MANHOLE TO GRADE	EACH	2		
6049903	ADJUST TELEPHONE MANHOLE/BOX TO GRADE	EACH	3		
6071056	(72 IN.) PROPERTY FENCE (STRUCTURES)	L.F.	142		
6079902	MECHANICAL GATE	EACH	1		
6081010	CONCRETE CURB RAMP	S.Y.	248		
6081012	TRUNCATED DOMES	S.F.	133		
6086004	CONCRETE SIDEWALK, 4 IN.	S.Y.	1650		
6086007	CONCRETE SIDEWALK, 7 IN.	S.Y.	265		
6091010	CONCRETE CURB (6 IN. HEIGHT AND UNDER) TYPE S	L.F.	239		
6092011	INTEGRAL CURB (6 IN. HEIGHT AND UNDER) TYPE A	L.F.	823		
6092012	INTEGRAL CURB (6 IN. HEIGHT AND UNDER) TYPE B	L.F.	1421		
6092014	INTEGRAL CURB TYPE N	L.F.	111		
6092098	CONCRETE WHEEL STOP	EACH	8		
6092099	BOLLARD	EACH	39		
6131014	FULL DEPTH PAVEMENT REPAIR SAW CUT	L.F.	4364		
6161005	CONSTRUCTION SIGNS	S.F.	400		
6161024	CHANNELIZER (TRIM LINE) WITH LIGHT	EACH	139		
6161031	TYPE III MOVEABLE BARRICADE WITH LIGHT	EACH	19		
6161040	FLASHING ARROW PANEL	EACH	1		

6161098	CHANGEABLE MESSAGE SIGN, CONTRACTOR FURNISHED, CONTRACTOR RETAINED	EACH	2		
6181000	MOBILIZATION	L.S.	1		
6274000	CONTRACTOR FURNISHED SURVEYING AND STAKING	L.S.	1		
7209904	MODULAR BLOCK RETAINING WALL	S.F.	350		
7250312A	12 IN. PIPE GROUP B	L.F.	459		
7269903	6 IN. PVC UNDERDRAIN (PAVERS)	L.F.	235		
7269924	GRANULAR FILL	C.Y.	159		
7319901	MSD STANDARD PRECAST MANHOLE	EACH	6		
7319902	MSD STANDAARD PRECAST SINGLE CURB INLET	EACH	2		
7319903	MSD STANDARD PRECAST SINGLE CURB INLET (TRAPPED)	EACH	5		
7319904	MSD STANDARD PRECAST DOUBLE CURB INLET (TRAPPED)	EACH	2		
7319905	MSD STANDARD DOUBLE 2 GRATE INLET (TRAPPED)	EACH	1		
7319906	MSD 2 GRATE INLET WITH SIDE INTAKE	EACH	1		
7319907	MSD DOUBLE 2 GRATE INLET WITH SIDE INTAKE	EACH	1		
7319908	MSD STANDARD AREA INLET, OPEN 4 SIDES (TRAPPED)	EACH	1		
8051000A	SEEDING - COOL SEASON MIXTURES	ACRE	0.5		
8061007A	CURB INLET CHECK	EACH	15		
8061019	SILT FENCE	L.F.	1385		
9039902	RELOCATE CAR DEALERSHIP SIGN	EACH	1		
9039903	RELOCATE LIGHT AT CAR DEALERSHIP	EACH	4		
	ROADWAY ITEMS SUBTOTAL:				
	PAVEMENT MARKING:				
620600B	4 IN. WHITE ACRYLIC WATERBORNE PAVEMENT MARKING PAINT	L.F.	2849		
6206001B	4 IN. YELLOW ACRYLIC WATERBORNE PAVEMENT MARKING PAINT	L.F.	2724		
6206106	ACRYLIC WATERBORNE PAVEMENT MARKING PAINT, 6 IN., WHITE	L.F.	534		
6206124	ACRYLIC WATERBORNE PAVEMENT MARKING PAINT, 24 IN., WHITE	L.F.	131		
6206125	ACRYLIC WATERBORNE PAVEMENT MARKING PAINT, 24 IN., YELLOW	L.F.	44		
6206197	ACRYLIC WATERBORNE PAVEMENT MARKING PAINT, STRAIGHT ARROW	EACH	4		
6206198	ACRYLIC WATERBORNE PAVEMENT MARKING PAINT, TURN ARROW	EACH	6		
6206199	ACRYLIC WATERBORNE PAVEMENT MARKING PAINT, STRAIGHT/TURN ARROW	EACH	6		
	PAVEMENT MARKING SUBTOTAL:				
	TRAFFIC SIGNAL ITEMS:				
9018245	POLE FOUNDATIONS (45 FT. OR 13.5 M MOUNTING HEIGHT)	EACH	1		
9020513	SIGNAL HEAD, TYPE 3B	EACH	8		
9020514	SIGNAL HEAD, TYPE 4B	EACH	2		
9020811	SIGNAL HEAD, TYPE 1S, PEDESTRIAN	EACH	4		
9020821	SIGNAL HEAD, TYPE 11S, PEDESTRIAN	EACH	2		
9022708	POST, SIGNAL 8 FT. OR 2.4 M.	EACH	3		
9023115	POST, TYPE CL, 15 FT. ARM OR 4.6 M ARM	EACH	1		
9023145	POST, TYPE CL, 45 FT. ARM OR 13.7 M ARM	EACH	1		
9023445	POST, TYPE BL, LONGEST ARM 45 FT. OR 13.7 M	EACH	1		
9024283	CONTROLLER ASSEMBLY HOUSING, NEMA TS2 CONTROLLER	EACH	1		

9024920	DETECTOR, PUSH BUTTON	EACH	8		
9024975	VIDEO DETECTION SYSTEM	EACH	1		
9025300	CONDUIT, 3 IN., TRENCH	L.F.	96		
9028100	CABLE, 10 AWG 1 CONDUCTOR, POLE AND BRACKET	L.F.	240		
9028302	CABLE, 12 AWG 2 CONDUCTOR	L.F.	530		
9028308	CABLE, 16 AWG 2 CONDUCTOR	L.F.	990		
9028310	CABLE, 16 AWG 5 CONDUCTOR	L.F.	1000		
9028311	CABLE, 16 AWG 7 CONDUCTOR	L.F.	1800		
9028611	POWER SUPPLY ASSEMBLY, TYPE 1 WITH 120V LIGHTING CONTROL CABINET	EACH	1		
9028811	PULL BOX, PREFORMED CLASS 2	EACH	3		
9028812	PULL BOX, PREFORMED CLASS 3	EACH	1		
9029100	BASE, CONCRETE	C.Y.	9.6		
9029400	TEMPORARY TRAFFIC SIGNALS	L.S.	1		
9029901	RELOCATE COMMUNICATIONS POLE & EQUIPMENT	L.S.	1		
9029901	RELOCATE & MODIFY TRAFFIC SIGNAL EQUIPEMENT	L.S.	1		
9035068	SIGNAL SIGN, TYPE SHR2L-1	S.F.	36		
9039902	ILLUMINATED SIGN	EACH	4		
	TRAFFIC SIGNAL ITEMS SUBTOTAL:				
	LIGHTING ITEMS:				
9014501	CONDUIT, 1 IN. RIGID, EXTERNAL ON STRUCTURE	L.F.	50		
9017002	CABLE, 2 AWG 1 CONDUCTOR	L.F.	100		
9017010	CABLE, 10 AWG 1 CONDUCTOR, POLE AND BRACKET	L.F.	1450		
9017407	CABLE CONDUIT, 1 IN., 2 CONDUCTORS AND 1 BARE NEUTRAL, 8 AWG	L.F.	7500		
9018610	POWER SUPPLY ASSEMBLY, TYPE 1 240/120 VOLT SERVICE, LIGHTING ONLY	EACH	1		
9019902	100W LED LIGHT FIXTURE WITH 15 FOOT DECORATIVE POLE	EACH	56		
9019905	10" X 3/4" COPPER CLAD GROUND ROD	EACH	57		
9029100	BASE, CONCRETE	C.Y.	24		
	LIGHTING ITEMS SUBTOTAL:				
	LANDSCAPING ITEMS:				
8089902	TREE GRATE	EACH	6		
8089903	BENCH	EACH	1		
8089904	WASTE RECEPTACLE	EACH	2		
8089905	EXPOSED AGGREGATE CONCRETE PAVING	S.Y.	445		
8089906	BUS STOP CONCRETE SEAT WALL	S.F.F.	35		
8089907	SCULPTURE NODE CONCRETE SEAT WALL	S.F.F.	62		
8089908	PERMEABLE PAVING	S.F.	1050		
8089909	CANOPY TREES	EACH	59		
8089910	EVERGREEN TREES	EACH	53		
8089911	FLOWERING TREES	EACH	13		
8089912	SHRUBS	EACH	75		
8089913	PERENNIALS	EACH	7143		
8089914	SOD	S.Y.	2446		
8089915	STRUCTURAL SOIL	C.Y.	170		

8089916	TOP SOIL	C.Y.	1320		
8089917	DEMOLITION & EXCAVATION	C.Y.	1500		
	LANDSCAPING ITEMS SUBTOTAL:				
	IRRIGATION ITEMS:				
6039904	SPRAY IRRIGATION	S.F.	20644		
6039905	DRIP IRRIGATION	S.F.	10113		
6039906	SLEEVEING	L.F.	1345		
	IRRIGATION ITEMS SUBTOTAL:				
				TOTAL BID	

- L. Lenses and Refractors Gaskets: Use heat- and aging-resistant resilient gaskets to seal and cushion lenses and refractors in luminaire doors.
- M. Luminaire Finish: Manufacturer's standard paint applied to factory-assembled and -tested luminaire before shipping. Where indicated, match finish process and color of pole or support materials.
- N. Factory-Applied Finish for Steel Luminaires: Comply with NAAMM's "Metal Finishes Manual for Architectural and Metal Products" for recommendations for applying and designating finishes.
 - 1. Surface Preparation: Clean surfaces to comply with SSPC-SP 1, "Solvent Cleaning," to remove dirt, oil, grease, and other contaminants that could impair paint bond. Grind welds and polish surfaces to a smooth, even finish. Remove mill scale and rust, if present, from uncoated steel, complying with SSPC-SP 5/NACE No. 1, "White Metal Blast Cleaning," or SSPC-SP 8, "Pickling."
 - 2. Exterior Surfaces: Manufacturer's standard finish consisting of one or more coats of primer and two finish coats of high-gloss, high-build polyurethane enamel.
 - a. Color: Black.
- O. Factory-Applied Labels: Comply with UL 1598. Include recommended lamps and ballasts. Labels shall be located where they will be readily visible to service personnel, but not seen from normal viewing angles when lamps are in place.
 - 1. Label shall include the following lamp and ballast characteristics:
 - a. "USES ONLY" and include specific lamp type.
 - b. Lamp diameter code (T-4, T-5, T-8, T-12), tube configuration (twin, quad, triple), base type, and nominal wattage for fluorescent and compact fluorescent luminaires.
 - c. Lamp type, wattage, bulb type (ED17, BD56, etc.) and coating (clear or coated) for HID luminaires.
 - d. Start type (preheat, rapid start, instant start) for fluorescent and compact fluorescent luminaires.
 - e. ANSI ballast type (M98, M57, etc.) for HID luminaires.
 - f. CCT and CRI for all luminaires.

2.3 LED FIXTURE

- A. Description: Solid State LED with compatible driver shall include the following:
 - 1. Color Corrected Temperature (CCT): ~~3500 K~~ 4000K
 - 2. Color Rendering Index (CRI): 80
 - 3. Dimming: Minimum efficacy, light output, CCT, CRI, and power factor of dimmable lamps will be confirmed with the lamp operated at full power.
 - 4. Warranty: A warranty must be provided for lamps, covering material repair or replacement for a minimum of three (3) years from the date of purchase.
 - 5. Power Factor: For lamp power $\leq 5W$ and for low voltage lamps, no minimum power factor is required. For lamp power $> 5W$, power factor must be ≥ 0.70 . Note: Power factor must be measured at rated voltage.
 - 6. Minimum Operating Temperature: $-20^{\circ}C$
 - 7. LED Operating Frequency: ≥ 150 Hz

SUMMARY OF QUANTITIES			
ITEM NUMBER	DESCRIPTION	UNIT	QUANTITY
	ROADWAY ITEMS:		
2013000	CLEARING AND GRUBBING	ACRE	0.5
2022010	REMOVAL OF IMPROVEMENTS	L.S.	1
2031000	CLASS A EXCAVATION	C.Y.	1819
2036000	COMPACTING EMBANKMENT	C.Y.	117
2069907	HAUL OFF EXCESS MATERIAL	C.Y.	1717
3040504	TYPE 5 AGGREGATE FOR BASE (4 IN. THICK)	S.Y.	2814
3040506	TYPE 5 AGGREGATE FOR BASE (6 IN. THICK)	S.Y.	793
3101002	GRAVEL (A)	TONS	28
4011209	BITUMINOUS PAVEMENT MIXTURE PG64-22, (BP-1)	TONS	253
4013000	BITUMINOUS PAVEMENT MIXTURE PG64-22 (BASE)	TONS	88
4071005	TACK COAT	GAL.	217
4081010	PRIME-LIQUID ASPHALT RC 70 OR MC 30	GAL.	978
5021107	CONCRETE PAVEMENT (7 IN. NON-REINF)	S.Y.	743
5021108	CONCRETE PAVEMENT (8 IN. NON-REINF)	S.Y.	1573
6039902	ADJUST WATER VALVE TO GRADE	EACH	6
6039922	ADJUST CLEANOUT TO GRADE	EACH	2
6039932	ADJUST GAS VALVE TO GRADE	EACH	11
6042010	ADJUST MANHOLE	EACH	2
6049902	ADJUST ELECTRICAL MANHOLE TO GRADE	EACH	2
6049903	ADJUST TELEPHONE MANHOLE/BOX TO GRADE	EACH	3
6071056	(72 IN.) PROPERTY FENCE (STRUCTURES)	L.F.	142
6079902	MECHANICAL GATE	EACH	1
6081010	CONCRETE CURB RAMP	S.Y.	248
6081012	TRUNCATED DOMES	S.F.	133
6086004	CONCRETE SIDEWALK, 4 IN.	S.Y.	1650
6086007	CONCRETE SIDEWALK, 7 IN.	S.Y.	265
6091010	CONCRETE CURB (6 IN. HEIGHT AND UNDER) TYPE S	L.F.	239
6092011	INTEGRAL CURB (6 IN. HEIGHT AND UNDER) TYPE A	L.F.	823
6092012	INTEGRAL CURB (6 IN. HEIGHT AND UNDER) TYPE B	L.F.	1421
6092014	INTEGRAL CURB TYPE N	L.F.	111
6092098	CONCRETE WHEEL STOP	EACH	8
6092099	BOLLARD	EACH	39
6131014	FULL DEPTH PAVEMENT REPAIR SAW CUT	L.F.	4364
6161005	CONSTRUCTION SIGNS	SQ. FT.	400
6161024	CHANNELIZER (TRIM LINE) WITH LIGHT	EACH	139
6161031	TYPE III MOVEABLE BARRICADE WITH LIGHT	EACH	19
6161040	FLASHING ARROW PANEL	EACH	1
6161098	CHANGEABLE MESSAGE SIGN, CONTRACTOR FURNISHED, CONTRACTOR RETAINED	EACH	2
6181000	MOBILIZATION	L.S.	1
6274000	CONTRACTOR FURNISHED SURVEYING AND STAKING	L.S.	1
7209904	MODULAR BLOCK RETAINING WALL	S.F.	350
7250312A	12 IN. PIPE GROUP B	L.F.	459
7269903	6" PVC UNDERDRAIN (PAVERS)	L.F.	235
7269924	GRANULAR FILL	CU. YD.	159
7319901	MSD STANDARD PRECAST MANHOLE	EACH	6
7319902	MSD STANDARD PRECAST SINGLE CURB INLET	EACH	2
7319903	MSD STANDARD PRECAST SINGLE CURB INLET (TRAPPED)	EACH	5
7319904	MSD STANDARD PRECAST DOUBLE CURB INLET (TRAPPED)	EACH	2
7319905	MSD STANDARD DOUBLE 2 GRATE INLET (TRAPPED)	EACH	1
7319906	MSD 2 GRATE INLET WITH SIDE INTAKE	EACH	1
7319907	MSD DOUBLE 2 GRATE INLET WITH SIDE INTAKE	EACH	1
7319908	MSD STANDARD AREA INLET (TRAPPED) OPEN 4 SIDES	EACH	1
8051000A	SEEDING - COOL SEASON MIXTURES	ACRE	0.5
8061007A	CURB INLET CHECK	EACH	15
8061019	SILT FENCE	L.F.	1385
9039902	RELOCATE CAR DEALERSHIP SIGN	EACH	1
9039903	RELOCATE LIGHT AT CAR DEALERSHIP	EACH	4
	PAVEMENT MARKING:		
620600B	4 IN. WHITE ACRYLIC WATERBORNE PAVEMENT MARKING PAINT	L.F.	2849
6206001B	4 IN. YELLOW ACRYLIC WATERBORNE PAVEMENT MARKING PAINT	L.F.	2724
6206106	ACRYLIC WATERBORNE PAVEMENT MARKING PAINT, 6 IN., WHITE	L.F.	534
6206124	ACRYLIC WATERBORNE PAVEMENT MARKING PAINT, 24 IN., WHITE	L.F.	131
6206125	ACRYLIC WATERBORNE PAVEMENT MARKING PAINT, 24 IN., YELLOW	L.F.	44
6206197	ACRYLIC WATERBORNE PAVEMENT MARKING PAINT, STRAIGHT ARROW	EACH	4
6206198	ACRYLIC WATERBORNE PAVEMENT MARKING PAINT, TURN ARROW	EACH	6
6206199	ACRYLIC WATERBORNE PAVEMENT MARKING PAINT, STRAIGHT/TURN ARROW	EACH	6

SUMMARY OF QUANTITIES			
ITEM NUMBER	DESCRIPTION	UNIT	QUANTITY
TRAFFIC SIGNAL ITEMS:			
9018245	POLE FOUNDATIONS (45 FT. OR 13.5 M MOUNTING HEIGHT)	EACH	1
9020513	SIGNAL HEAD, TYPE 3B	EACH	8
9020514	SIGNAL HEAD, TYPE 4B	EACH	2
9020811	SIGNAL HEAD, TYPE 1S, PEDESTRIAN	EACH	4
9020821	SIGNAL HEAD, TYPE 11S, PEDESTRIAN	EACH	2
9022708	POST, SIGNAL 8 FT. OR 2.4 M.	EACH	3
9023115	POST, TYPE CL, 15 FT. ARM OR 4.6 M ARM	EACH	1
9023145	POST, TYPE CL, 45 FT. ARM OR 13.7 M ARM	EACH	1
9023445	POST, TYPE BL, LONGEST ARM 45 FT. OR 13.7 M	EACH	1
9024283	CONTROLLER ASSEMBLY HOUSING, NEMA TS2 CONTROLLER	EACH	1
9024920	DETECTOR, PUSHBUTTON	EACH	8
9024975	VIDEO DETECTION SYSTEM	EACH	1
9025300	CONDUIT, 3 IN., TRENCH	L.F.	96
9028100	CABLE, 10 AWG 1 CONDUCTOR, POLE AND BRACKET	L.F.	240
9028302	CABLE, 12 AWG 2 CONDUCTOR	L.F.	530
9028308	CABLE, 16 AWG 2 CONDUCTOR	L.F.	990
9028310	CABLE, 16 AWG 5 CONDUCTOR	L.F.	1000
9028311	CABLE, 16 AWG 7 CONDUCTOR	L.F.	1800
9028611	POWER SUPPLY ASSEMBLY, TYPE 1 WITH 120V LIGHTING CONTROL CABINET	EACH	1
9028811	PULL BOX, PREFORMED CLASS 2	EACH	3
9028812	PULL BOX, PREFORMED CLASS 3	EACH	1
9029100	BASE, CONCRETE	C.Y.	9.6
9029400	TEMPORARY TRAFFIC SIGNALS	I.S.	
9029901	RELOCATE COMMUNICATIONS POLE & EQUIPMENT	L.S.	1
9029901	RELOCATE & MODIFY TRAFFIC SIGNAL EQUIPMENT	L.S.	1
9035068	SIGNAL SIGN, TYPE SHR2L-1	S.F.	36
9039902	ILLUMINATED SIGN	EACH	4
LIGHTING ITEMS:			
9014501	CONDUIT, 1 IN. RIGID, EXTERNAL ON STRUCTURE	L.F.	50
9017002	CABLE, 2 AWG 1 CONDUCTOR	L.F.	100
9017010	CABLE, 10 AWG 1 CONDUCTOR, POLE AND BRACKET	L.F.	1450
9017407	CABLE CONDUIT, 1 IN., 2 CONDUCTORS AND 1 BARE NEUTRAL, 8 AWG	L.F.	7500
9018610	POWER SUPPLY ASSEMBLY, TYPE 1, 240/120 VOLT SERVICE, LIGHTING ONLY	EACH	1
9019902	100W LED LIGHT FIXTURE WITH 15 FOOT DECORATIVE POLE	EACH	56
9019905	10' X 3/4" COPPER CLAD GROUND ROD	EACH	57
9029100	BASE, CONCRETE	C.Y.	24
LANDSCAPE ITEMS:			
8089902	TREE GRATE	EACH	6
8089903	BENCH	EACH	1
8089904	WASTE RECEPTACLE	EACH	2
8089905	EXPOSED AGGEGRATE CONCRETE PAVING	S.Y.	445
8089906	BUS STOP CONCRETE SEAT WALL	S.F.F.	35
8089907	SCULPTURE NODE CONCRETE SEAT WALL	S.F.F.	62
8089908	PERMEABLE PAVING	S.F.	1050
8089909	CANOPY TREES	EACH	59
8089910	EVERGREEN TREES	EACH	53
8089911	FLOWERING TREES	EACH	13
8089912	SHRUBS	EACH	75
8089913	PERENNIALS	EACH	7143
8089914	SOD	S.Y.	2446
8089915	STRUCTURAL SOIL	C.Y.	170
8089916	TOP SOIL	C.Y.	1320
8089917	DEMOLITION & EXCAVATION	C.Y.	1500
IRRIGATION ITEMS:			
6039904	SPRAY IRRIGATION	S.F.	20644
6039905	DRIP IRRIGATION	S.F.	10113
6039906	SLEEVEING	L.F.	1345

[illegible]

401 S. 18TH ST., STE. 400 SAINT LOUIS, MO 63103-2296
314-531-4321 • FAX 314-531-5966 • WWW.HORNERSHIFRIN.COM

Name: Aaron Harrison
Discipline: Civil Engineer
License No. 20030149766
Expiration Date: 12-31-2015

CITY OF MAPLEWOOD
MANCHESTER ROAD - PHASE 3

CITY: MAPLEWOOD
COUNTY: ST. LOUIS
STATE: MISSOURI

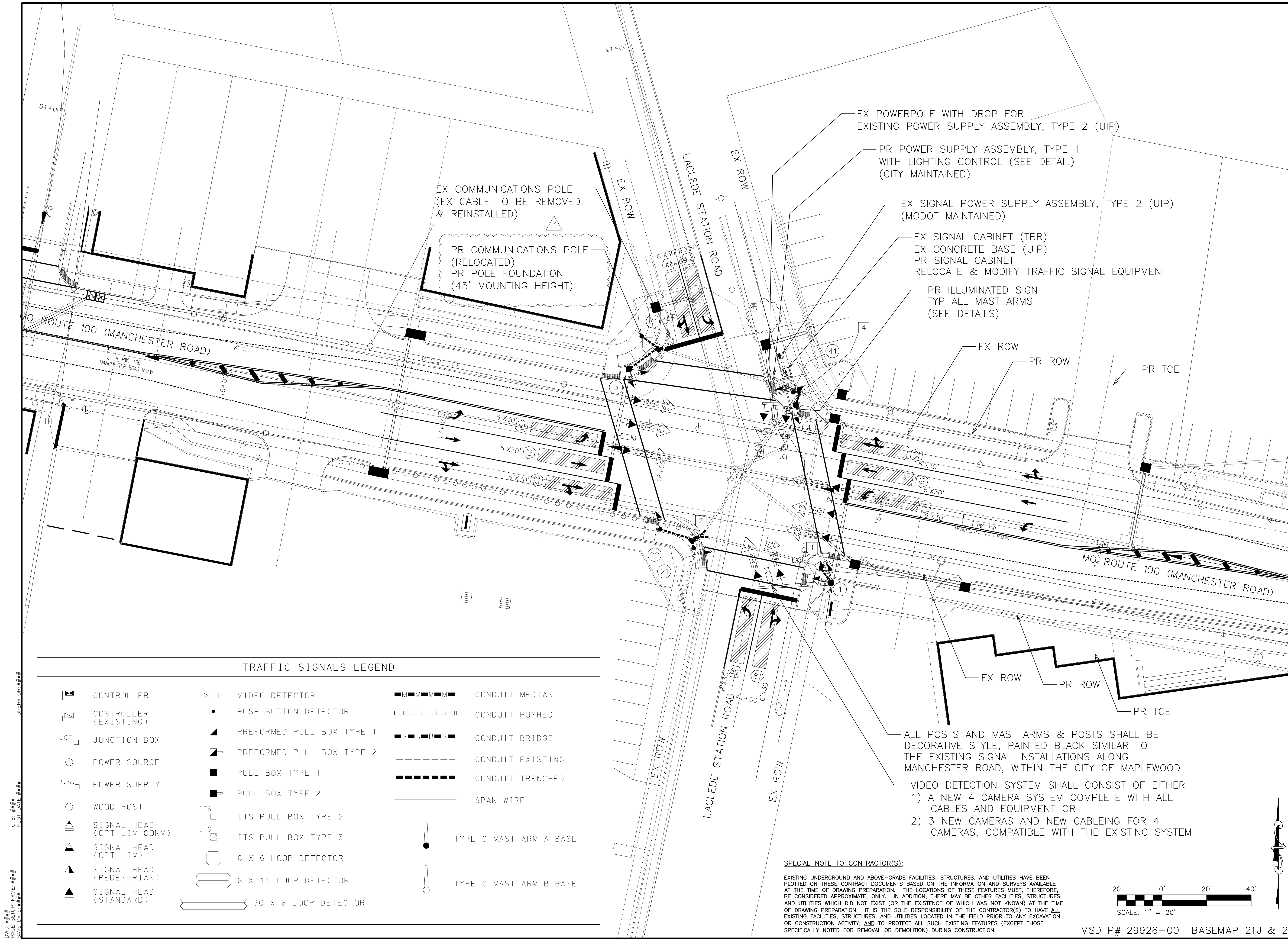
SUMMARY OF QUANTITIES

DATE: 02/10/2016

DESIGNED: AMH
DRAWN: AMH
CHECKED: JDJ

JOB NO. 1217000

C2A



DWG: ###
PAGE SETUP NAME: ###
SAVE DATE: ###
CTB: ###
PLOT DATE: ###
OPERATOR: ###

TRAFFIC SIGNALS LEGEND					
	CONTROLLER		VIDEO DETECTOR		CONDUIT MEDIAN
	CONTROLLER (EXISTING)		PUSH BUTTON DETECTOR		CONDUIT PUSHED
	JUNCTION BOX		PREFORMED PULL BOX TYPE 1		CONDUIT BRIDGE
	POWER SOURCE		PREFORMED PULL BOX TYPE 2		CONDUIT EXISTING
	POWER SUPPLY		PULL BOX TYPE 1		CONDUIT TRENCHED
	WOOD POST		PULL BOX TYPE 2		SPAN WIRE
	SIGNAL HEAD (OPT LIM CONV)		ITS PULL BOX TYPE 2		TYPE C MAST ARM A BASE
	SIGNAL HEAD (OPT LIM)		ITS PULL BOX TYPE 5		TYPE C MAST ARM B BASE
	SIGNAL HEAD (PEDESTRIAN)		6 X 6 LOOP DETECTOR		
	SIGNAL HEAD (STANDARD)		6 X 15 LOOP DETECTOR		
			30 X 6 LOOP DETECTOR		

SPECIAL NOTE TO CONTRACTOR(S):
EXISTING UNDERGROUND AND ABOVE-GRADE FACILITIES, STRUCTURES, AND UTILITIES HAVE BEEN PLOTTED ON THESE CONTRACT DOCUMENTS BASED ON THE INFORMATION AND SURVEYS AVAILABLE AT THE TIME OF DRAWING PREPARATION. THE LOCATIONS OF THESE FEATURES MUST, THEREFORE, BE CONSIDERED APPROXIMATE, ONLY. IN ADDITION, THERE MAY BE OTHER FACILITIES, STRUCTURES, AND UTILITIES WHICH DID NOT EXIST (OR THE EXISTENCE OF WHICH WAS NOT KNOWN) AT THE TIME OF DRAWING PREPARATION. IT IS THE SOLE RESPONSIBILITY OF THE CONTRACTOR(S) TO HAVE ALL EXISTING FACILITIES, STRUCTURES, AND UTILITIES LOCATED IN THE FIELD PRIOR TO ANY EXCAVATION OR CONSTRUCTION ACTIVITY, AND TO PROTECT ALL SUCH EXISTING FEATURES (EXCEPT THOSE SPECIFICALLY NOTED FOR REMOVAL OR DEMOLITION) DURING CONSTRUCTION.

20' 0' 20' 40'
SCALE: 1" = 20'

MSD P# 29926-00 BASEMAP 21J & 21K

STP-5401(669)

1	3/8/16	ADDENDUM 1
NO.	DATE	REVISION

401 S. 18TH ST., STE. 400 SAINT LOUIS, MO 63103-2296
314-531-4321 • FAX 314-531-6886 • WWW.HORNERSHIFFRIN.COM
DISCIPLINE: PROFESSIONAL ENGINEERING
CERTIFICATE OF AUTHORITY: 000159
EXPIRATION DATE: DECEMBER 31, 2016

Name: Brian Schmidt
License No.: 201400727
Expiration Date: 12-31-2016

CITY OF MAPLEWOOD
MANCHESTER ROAD - PHASE 3

CITY: MAPLEWOOD
COUNTY: ST. LOUIS
STATE: MISSOURI

TRAFFIC SIGNAL PLANS

DATE:	04/10/15
DESIGNED:	BDS
DRAWN:	BDS
CHECKED:	JDJ
JOB NO.	1217000

C14.1

TOTAL	9.6
TOTAL	9.6

1

SUBTOTAL OPTICALLY LIMITED
SUBTOTAL CONVENTIONAL
SUBTOTAL COMBINATION OL & CONV
TOTAL OPTICALLY LIMITED
TOTAL CONVENTIONAL
TOTAL COMBINATION OL & CONV

4	R10-FYA	30 X 36	7.5	30
SUBTOTAL AREA ITEM NO. 903-50.68				36
TOTAL AREA ITEM NO. 903-50.68				36

ALL LENGTHS AND SPACINGS ARE IN FEET UNLESS OTHERWISE INDICATED.

* ITEMS FOR WHICH SEPARATE PAYMENT WILL NOT BE MADE.

** SEE STANDARD PLANS 902.10 AND 902.30 FOR CONCRETE REQUIREMENTS ON BASES.

*** USE D3-16 FOR ONE LINE. USE D3-18 FOR TWO LINE.

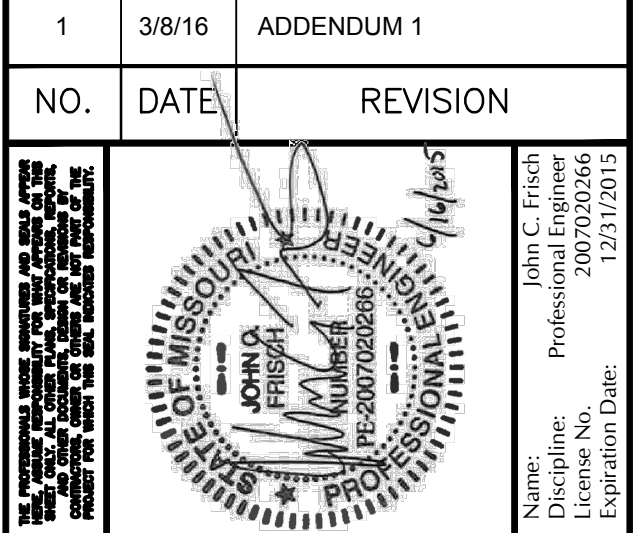
SIGNAL STRUCTURES WHICH WILL EXCEED THE DIMENSION LIMITS SHOWN ON STANDARD PLAN SHEETS IN SECTION 902 AND ANY OTHER INSTALLATION WHERE THE DETAILS OF CONSTRUCTION ARE NOT FURNISHED IN THE CONTRACT PLANS, SHALL BE DESIGNED BY A PROFESSIONAL ENGINEER IN ACCORDANCE WITH THE 2001 AASHTO STANDARD SPECIFICATIONS FOR STRUCTURAL SUPPORTS FOR HIGHWAY SIGNS, LUMINAIRES AND TRAFFIC SIGNALS, 4TH EDITION, AND LATEST INTERIMS. THE STRUCTURE SHALL BE DESIGNED AS IMPORTANCE CATEGORY I FOR FATIGUE WITH A 50-YEAR DESIGN LIFE. THE CONTRACTOR SHALL SUBMIT A SET OF SHOP DETAIL DRAWINGS INCLUDING WELD PROCEDURE SPECIFICATIONS AND DESIGN COMPUTATIONS FOR MDOOT RECORDS AND REFERENCE. THE SUBMITTED DRAWINGS AND CALCULATIONS SHALL BE SIGNED AND SEALED IN ACCORDANCE WITH THE LAWS RELATING TO ARCHITECTS AND PROFESSIONAL ENGINEERS (CHAPTER 327, RSMO.), AND SHALL INCLUDE A TITLE BLOCK OR SUMMARY SHEET WHICH LISTS AND CERTIFIES THAT THE PRODUCT MEETS ALL OF THE SPECIFIED DESIGN CRITERIA.

MO ROUTE 100 (MANCHESTER ROAD) AND LACLEDE STATION ROAD
INTERSECTION

C14.2



STP-5401(669)



401 S. 18TH ST., STE. 400 SAINT LOUIS, MO 63103-2296
314-531-4321 • FAX 314-531-6966 • WWW.HORNERSHIFRIN.COM
DISCIPLINE: PROFESSIONAL ENGINEERING
CERTIFICATE OF AUTHORITY: 000159
EXPIRATION DATE: DECEMBER 31, 2016

Name: John C. Frisch
Discipline: Professional Engineer
License No. 2007020266
Expiration Date: 12/31/2015

CITY: MAPLEWOOD
COUNTY: ST. LOUIS
STATE: MISSOURI

ELECTRICAL DETAILS

JOB NO.	1217000
---------	---------

E5.1