

**ADDENDUM No. 1**  
**JEFFERSON CITY WAYFINDING SIGNAGE**  
**TAP 9901(501)**

**CITY OF JEFFERSON – PUBLIC WORKS**  
**April 13, 2014**

Notice is hereby given to bidders that in reference to the subject project, the following modifications shall be noted. All other aspects of the Contract Documents remain in full force and effect.

The bidder will acknowledge receipt of this Addendum and his acceptance of its conditions by signing this Addendum and including it with his bid.

BIDDER:

---

BY:

---

TITLE:

---

Addendum Items

- 1) Questions/Clarifications
- 2) Notice to Contractors Announcement Changes
- 3) Bid Proposal Form Changes
- 4) Job Special Provisions Changes
- 5) Plan Sheet Changes
- 6) Attachments

**ADDENDUM No. 1**  
**JEFFERSON CITY WAYFINDING SIGNAGE**  
**TAP 9901(501)**

**1) QUESTIONS/CLARIFICATIONS**

The following questions were raised at the pre-bid conference, or via phone or email. The questions, answers, and additional clarifications provided below, grouped by the affected plan sheet number.

**1. Sheet 2**

- a. Question: In the “Potential Additional Signs” schedule, the District Directional Signs call for small 3” decorative post, but the drawing shows a large 4” decorative post. Please confirm which is correct.
  - i. Answer: The Post Type for Sign 183A, 184A, and 185A is changed to “Decorative (Large)”.
    - 1. The Post Type Quantity Table is updated as follows
      - a. Decorative (Large): 3
      - b. Decorative (Small): 4
- b. Question: The drawings for the District Directional Signs shows (2) options, painted black 4” decorative post or a painted black 4” pipe post. Schedule shows some of these signs to have an unpainted galvanized steel 4” pipe post. Please confirm which is correct. If it is to be galvanized, what is the finish on the base cover for these signs?
  - i. Answer: Post Coating for Sign 21, 22, 23, 24, and 25 is changed to “Galvanized”. For the base cover, the finish coat and intermediate coats shall be colored Pantone Black, in accordance with the architect’s specifications.

**2. Sheet G-100**

- a. Question: What is the scope of work for the requested prototypes? Are you looking for a full size panel? What sign types? Material and digital print samples?
  - i. Answer: Four (4) prototypes will be required, as described below:
    - 1. Sign Type C – One (1) full scale section on actual reflective sheeting material. Arcturis to provide artwork of section of capitol seal and legend (approx. 3’x4’). Mount to foam core.
    - 2. Sign Type D – One (1) full scale section digitally printed capitol seal and 2 lines of legend. Arcturis to provide digital artwork. No printing on reflective sheeting required for this prototype. Prototype is for review of layout, font, and arrow size
    - 3. Sign Type F – One (1) full scale section on painted aluminum panel with digitally printed capitol seal and 2 lines of vinyl-applied legend. Arcturis to provide digital artwork of section.
    - 4. Sign Type G2 – One (1) full scale version of the full sign (area map sign) on CHPL sign (or approved alternate – see Question 6). Arcturis to provide digital artwork.

## 3. Sheet G-103

- a. Clarification: Side View (2) shows the incremental panels up to the top of the structural posts. The header portion of the sign (shown with red sign face – Pantone 1815) may be a 1/8" minimum thickness panel attached per Missouri Standard Plans for Highway Construction.

## 4. Sheet G-105, 109, 110, 111, 113, 115, 119, and 121

- a. Question: Should a bid be provided for each pole option?
  - i. Answer: Pole/Post options shown for illustrative purposes. The post type for each installation is shown on Plan Sheet 2 of 40.

## 5. Sheet G-109 and G-119

- a. Question: Can exposed mounting hardware be used for the PSST posts? Would paint match printed background color of panel?
  - i. Answer: PSST Posts are specified on Plan Sheet 2 for the following sign types: Street Parking Directional, Bikeway Directional, and Bikeway Arrow (no destination). Mounting hardware is dependent on sign material type, specified as follows.
    - 1. Street Parking Directional (Sign Type E: Plan Sheet G-109)
      - a. Panel thickness is revised in this addendum (see Plan Sheet changes below).
      - b. Exposed hardware may be used, provided all finish on exposed hardware and fasteners match surrounding sign surfaces (colors) unless otherwise noted.
    - 2. Bikeway Directional (Sign Type H) and Bikeway Arrow (no destination) (Sign Type H2) (Plan Sheet G-119):
      - a. Panel material and thickness is revised in this addendum (see Plan Sheet changes below).
      - b. Exposed hardware may be used, provided all finish on exposed hardware and fasteners match surrounding sign surfaces (colors) unless otherwise noted.

## 6. Sheet G-115

- o Question: What does "Changeable map" mean?
  - i. Answer: Each sign of Type G2 (Area Map) will be a different piece of artwork, which will be provided by the architect.

## 7. Sheet G-115, G-117, and G-119

- a. Question: (1) Can custom high pressure laminate (CHPL) be substituted with digitally embedded fiberglass? (2) Is I-Zone the only acceptable manufacturer for these signs?
  - i. Answer: For Sign Type G2, the printed note "I-Zone or approved alternates" shall mean alternate materials and alternate manufacturers, as approved by the architect. Digitally embedded fiberglass is an acceptable material, provided all equivalent specifications for CHPL (JSP Section L – Sign Types – Item 2.9) are met and approved by the architect.
  - ii. Clarification: Panel material and thickness is revised for Sign Type H (Bikeway Directional) and Type H2 (Bikeway Arrow - no destination) in this in this addendum (see Plan Sheet changes below), with the CHPL requirements no longer applicable on Sheet G-119.

#### 8. Decorative Sign Post Finials and Bases

- a. Question: Plan Sheet G-105 shows a 5" finial and 5" base with a 4" pole; Plan Sheets G-110 and G-111 show a 4" finial and 4" base with a 3" pole; Plan Sheets G-113 and G-115 show a 3" finial and 3" base with a 3" pole. Should all base sizes match the pole size?
  - i. Answer: Yes, all base sizes shall match the pole size. See Plan Sheet 2 for post type of each sign installation.

#### 9. Sign Retroreflectivity

- a. Question: Is there a City requirement for sign retroreflectivity beyond MoDOT standards?
  - i. Answer: No, there is no additional retroreflectivity requirements beyond MoDOT standards. Any appropriate means of achieving the retroreflectivity requirement may be proposed, and will need approval from the architect when shop drawings are submitted.
- b. Clarification: Not all sign types require retroreflectivity. The notes for each sign type in the sign detail sheets describe the requirements for the sign panels.

#### 10. Sign Posts

- a. Question: What is the City's requirement for sign post coating?
  - i. Answer: All posts shall have either System G coating or be galvanized. See Plan Sheet changes below for clarification in Table of Contents on Plan Sheet 2.

#### 11. Sign Edges

- a. Question: The side view drawings for both the aluminum and high pressure laminate signs shows the panel colors on the return (edge of panel). Please confirm that the returns will be painted black or standard black on HPL and not multi-color as show on drawings.
  - i. Answer: Sign edge colors are shown for visual purposes only. Returns may have a black color.
  - ii. Clarification: Sign Type G1 (Information Kiosk/Directory: Sheet G-113) accurately depicts the side view as showing the sign cabinet edges being colored to match the front and rear views.

#### 12. Sign Coatings

- a. Question: What are the specifications of a System G pole (JSP 2.3)?
  - i. Answer: Specifications for System G coating can be found in MoDOT's Missouri Standard Specifications for Highway Construction Section 1045.3 and 1081.
- b. Question: The specification for the decorative posts call for System G coatings. The decorative posts will be extruded aluminum, not steel, and all of the decorative bases will be aluminum castings and will not be capable of receiving a prime coat as specified in MODOT specification 1045.3. Please confirm that epoxy primer with polyurethane finish coat will suffice.
  - i. Answer: Epoxy primer with polyurethane finish coat is an acceptable alternate for the decorative posts, to be approved by the architect.

#### 13. Double Sided Signs

- a. Question: (1) For the double sided signs, does the sign panel mirror itself on side B so both panel line up? (2) Is the wave design along the bottom edge reversed?

- i. Answer: Yes, all double sided sign locations shall have one side with the wave pattern reversed along the bottom edge so the bottom edges of both signs are lined up (i.e. so that the back of both signs are not visible). See Plan Sheet 2 for a list of double sided signs.

#### 14. Sign Removals

- a. Question: For signs that are being removed where a new sign is not being replaced, is the entire sidewalk panel expected to be replaced?
  - i. Answer: Removal notes are revised with this Addendum (see Plan Sheet changes below) for signs that are not being replaced in the same location with a new sign. Post removal at these locations will not be required. All removals are subsidiary to other bid items.

#### 15. Alternate Signs

- a. Question: Is a bid needed for the alternate signs?
  - i. Answer: The alternate signs should not be a part of the bid. If any alternates are selected, the unit prices will be based on the bid items in the base bid.

#### 16. Labor Rates

- a. Question: Is Union Labor required?
  - i. Answer: Prevailing wage is required for on-site work, based on the County (Cole and Callaway) prevailing wage rates in the bid packet, which may be adjusted in a future addendum that would be issued prior to the bid opening.

#### 17. Permitting

- a. Question: Are City sign permits required for this project?
  - i. Answer: No City sign permits are required. MoDOT requires a permit to work on the state right-of-way, which will be necessary for some signs. The City will complete this permit application and have the contractor endorse it.

#### 18. DBE Subcontractors

- a. Question: DBE sub-contractor partners are still being solicited to handle all field-related work. We ask that you allow future questions/clarifications regarding this part of the project should we receive anything from these subcontractors.
  - i. Answer: The bid opening date is being moved to April 26<sup>th</sup> (see Notice to Contractors Announcement Changes below). Additional questions will be addressed as much as possible.

## 2) **NOTICE TO CONTRACTORS ANOUNCEMENT CHANGES**

Sealed bids for the Jefferson City Wayfinding Project will be received at: 320 E. McCarty Street, Jefferson City, MO 65101 until 1:30 o'clock P.M. (Prevailing Local Time) on the **26<sup>th</sup> day of April**, at the office of the Purchasing Agent, and at that time will be publicly opened and read aloud in the Council Chambers. All bids shall be submitted on the forms included in the contract specifications.

### 3) **BID PROPOSAL FORM CHANGES**

The following changes have been made to the bid proposal form. **A revised bid proposal form is attached.** The Bidder shall use the revised bid proposal form when preparing his bid.

- Changed Quantity of Item 2 – Site Preparation and Restoration (Concrete) – to 16
- Changed Quantity of Item 4 – Site Preparation and Restoration (Turf) – to 27
- Changed Quantity of Item 15 – Existing Pole Mount Installation (or Additional New Sign on Other New Post) – to zero (0)
- Changed Quantity of Item 19 – Pipe Post (3”) – to 2
- Changed Quantity of Item 24 – Perforated Square Steel Tube Post with System G Coating – to 6
- Changed Quantity of Item 28 – Concrete Footing for PSST Post – to 19

### 4) **JOB SPECIAL PROVISIONS CHANGES:**

The following Job Special Provisions are replaced with the following:

#### F. **TIME FOR COMPLETION OF WORK**

- 1.1 Regardless of when the work is begun on this contract, all work shall be completed on or before the date specified below. Completion by this date shall be in accordance with the requirements of Sec. 108.7.

Completion Date: **December 15, 2016**

#### J. **SIGN POSTS**

**2.3 Base and Surface Coatings.** System G coatings and all applicable undercoatings shall be applied to all “Decorative” posts as well as structural, **pipe**, and PSST posts designated to be coated as shown in the contract plans or as designated elsewhere in this contract. Posts not coated with System G coatings shall be hot-dipped galvanized in accordance with applicable portions of Sec. 903 as well as Sec. 1081.

**2.3.2 Intermediate and Finish Coats.** Finish and intermediate coatings shall be in accordance with Sec. 1045 as it applies to System G coatings, except as modified herein. Finish coat and intermediate coats shall be colored **Pantone Black**.

**5) PLAN SHEET CHANGES:**

- Sheet 2
  - All signs shown as Post Coating “None” shall be replaced with “Galvanized”. Revised quantities are as follows.
    - Post Coating
      - Base Bid
        - Galvanized: 28
        - System G: 28
      - Potential Additional Signs
        - Galvanized: 11
        - System G: 14
    - For Signs 21, 22, and 23, the Site Preparation type “Concrete” shall be replaced with “Turf”. Revised quantities are as follows (also see revised Bid Form).
      - Site Preparation (Base Bid)
        - Turf: 27
        - Concrete: 16
    - For Sign 33, Footing Type “None” shall be replaced with “Concrete”. Revised quantities are as follows (also see revised Bid Form).
      - Concrete Footings (Base Bid)
        - Decorative: 14
        - Structural: 2
        - Pipe: **15**
        - PSST: 19
        - Total: 50
    - General Notes
      - Note G is revised to say the following:
        - All sign removals **and relocations** are considered subsidiary to other bid items.
- Sheet 6
  - View B
    - Northeast corner of Capitol Ave./Madison St.
      - Original Note
        - Remove existing Parking Garage sign and salvage to City
      - Revised Note
        - Remove existing Parking Garage sign and salvage to City.  
**DND existing post.**
      - Field Picture



- Southwest corner of Capitol Ave./Madison St.
  - Original Note
    - Remove existing Parking Garage sign and salvage to City
  - Revised Note
    - Remove existing Parking Garage sign and salvage to City.  
**DND post. Relocated 2 Hr Parking sign to the top of the U-Channel Post.**
  - Field Picture



- Sheet 7
  - View A
    - South side of High St.
      - Original Note
        - Remove existing Parking Garage sign and salvage to City
      - Revised Note
        - Remove existing Parking Garage sign and salvage to City.  
**DND post.**
      - Field Picture



(picture courtesy of Google Earth)



- Sheet 13

- View A

- Northeast corner of Broadway St./Wall Way

- Original Note
        - Remove 2 Hr Parking sign and post and salvage to the City
      - Revised Note
        - **Relocate** 2 Hr Parking sign and post **at the direction of the Engineer**
      - Field Picture



- View D

- Northeast corner of Jefferson St./Wall Way

- Original Note
        - Remove Wall Way and 90 Min Parking signs and post and salvage to the City
      - Revised Note
        - Remove **Parking and Right Arrow signs** and salvage to the City. **Relocate** Wall Way street name sign and 90 Min Parking sign and post **at the direction of the Engineer**
      - Field Picture



- Sheet 14

- View B

- South side of US 50/63 (approaching Broadway Street)

- Original Note
        - If Alternate sign 114A is selected, remove existing "Missouri State Capitol"/"Missouri State Museum" sign

and “Missouri Civil War” sign and posts and salvage to City.

- Revised Note
  - If Alternate sign 114A is selected, remove existing “Missouri State Capitol”/“Missouri State Museum” sign **and right post** and salvage to City. **Relocate** “Missouri Civil War” sign **to left post**.
- Field Picture



- View C
  - North/East side of US 50/63 (approaching Broadway Street)
    - Original Note
      - If Alternate sign 113A is selected, remove existing “Missouri State Capitol”/“Missouri State Museum” sign and “Missouri Civil War” sign and posts and salvage to City
    - Revised Note
      - If Alternate sign 114A is selected, remove existing “Missouri State Capitol”/“Missouri State Museum” sign **and right post** and salvage to City. **Relocate** “Missouri Civil War” sign **to left post**.
    - Field Picture



- Sheet 16
  - View C
    - North side of 4<sup>th</sup> St. at Cottonwood St.
      - Original Note

- Remove existing Bike Destination sign, Historical Marker sign and arrow, Greenway sign and posts and salvage to the City
- Revised Note
  - Remove existing Bike Destination sign **and right post** and salvage to the City. **Relocate** Greenway sign **below Sign 68 on new post**. **DND** Historical Marker sign and arrow. **Remove top portion of left post above Historical Marker sign.**
- Field Picture



- South side of 4<sup>th</sup> St. at Cottonwood Street
  - Original Note
    - Remove existing Bike Destination sign and Greenway sign and post and salvage to the City
  - Revised Note
    - Remove existing Bike Destination sign and post and salvage to the City. **Relocate existing** Greenway sign **below Sign 69 on new post**.
  - Field Picture



- Sheet 17
  - View C
    - South side of Wall Way at Monroe St.
      - Original Note
        - Remove existing Street Name sign and post and salvage to the City



- Revised Note
  - Remove existing post and salvage to the City. **Relocate Wall Way Street Name sign above Sign 33 on new post.**
- Field Picture



(Parking sign, Arrow sign, and post are to be removed per the other note in View C of Plan Sheet 17.

- Sheet G-101
  - Colors
    - The name for match color 7 is changed to Pantone 540 (used for Sign 24).
- Sheet G-104 (Sign Type C – Major Boulevard Vehicular Directional)
  - Detail View (5): Sign Type C
    - The optional wave was not chosen for any of the sign locations for Sign Type C. All signs of Type C will have exterior dimensions shown in Detail View (4) on Plan Sheet G-104. Legend spacing shown on View (5) still applies. Final artwork to be provided by the architect.
- Sheet G-105 (Sign Type D – District Vehicular Directional)
  - PANEL Note
    - Panel thickness is changed to 1/8" minimum. Exposed fasteners may be used provided they match surrounding sign surfaces (colors). All fasteners and hardware to be approved by the architect.
- Sheet G-106
  - Heading for Sign 24 shall match color ID (7) (Pantone 540) on Plan Sheet G-101.
- Sheet G-109 (Sign Type E – Street Parking Directional)
  - PANEL Note
    - Panel thickness is changed to 0.08" minimum. Exposed fasteners may be used provided they match surrounding sign surfaces (colors). All fasteners and hardware to be approved by the architect.
  - COLOR Note:
    - Reference to Pantone Black applies only to posts identified as Post Coating System G on Plan Sheet 2 of 40.

- Sheet G-110 (Sign Type E – Street Parking Directional)
  - PANEL Note
    - Panel thickness is changed to 0.08” minimum. Exposed fasteners may be used provided they match surrounding sign surfaces (colors). All fasteners and hardware to be approved by the architect.
- Sheet G-111 (Sign Type F – Pedestrian Directional)
  - PANEL Note
    - Panel thickness is changed to 1/8” minimum. Exposed fasteners may be used provided they match surrounding sign surfaces (colors). All fasteners and hardware to be approved by the architect.
- Sheet G-115 (Sign Type G2 – Area Map)
  - PANEL
    - For Sign Type G2, the printed note “I-Zone or approved alternates.” shall mean alternate materials and alternate manufacturers, as approved by the architect. Digitally embedded fiberglass is an acceptable material, provided all equivalent specifications for CHPL (JSP Section L – Sign Types – Item 2.9) are met and approved by the architect.
  - The lower fastener shown on the on side views (Decorative Post (Small) and Pipe Post) shall be lowered to near the bottom of the sign. Final fastener location to be approved by the architect.
- Sheet G-117 (Sign Type G2 – Area Map Custom)
  - PANEL
    - For Sign #53, the printed note “I-Zone or approved alternates.” shall mean alternate materials and alternate manufacturers, as approved by the architect. Digitally embedded fiberglass is an acceptable material, provided all equivalent specifications for CHPL (JSP Section L – Sign Types – Item 2.9) are met and approved by the architect.
- Sheet G-119 (Sign Type H – Bikeway Directional)
  - PANEL
    - Sign panel material and thickness are changed as follows:
      - Panel shall be 0.08” thick (minimum) aluminum with retroreflective sign faces digitally printed with 3M UV-cured inkjet inks onto 3M™ Diamond Grade™ DG<sup>3</sup> Reflective Sheeting. Overlaid with transparent 3M™ Electro-Cut™ Film 1170.
      - Exposed fasteners may be used provided they match surrounding sign surfaces (colors). All fasteners and hardware to be approved by the architect.
  - Color Note
    - Posts shall be galvanized or coated with System G coating as specified on Plan Sheet 2 of 40 under Post Coating for each sign location.
- Sheet G-121 (Sign Type J2 – Subdistrict Sign)
  - PANEL Note
    - Panel thickness is changed to 1/8” minimum. Exposed fasteners may be used provided they match surrounding sign surfaces (colors). All fasteners and hardware to be approved by the architect.

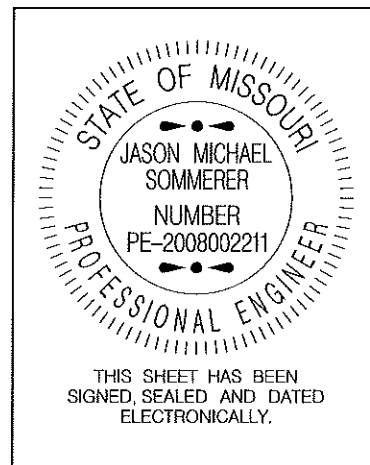
**6) ATTACHMENT:**

- Revised Bid Form
- Pre-Bid Conference Meeting Minutes

**BARTLETT & WEST, INC.**

Jason Sommerer, P.E., PTOE  
Project Engineer

Attachment



# **City of Jefferson**

Department of Public Works  
320 E. McCarty St.  
Jefferson City, MO 65101



## **Carrie Tergin, Mayor**

Matthew Morasch, PE, Director  
Phone: 573-634-6410  
Fax: 573-634-6562

April 13, 2016

**Subject: Wayfinding Signage  
Project No. 32137  
Federal Project TAP-9901 (501)  
Pre-bid Conference Notes**

A pre-bid conference was held in the Thomas Jefferson Conference Room of City Hall on Thursday, April 7, 2016 for the above noted project. Those who attended the meeting are listed below:

<b><u>NAME</u></b>	<b><u>REPRESENTING</u></b>	<b><u>PHONE</u></b>
David Bange	City of Jefferson, Public Works	(573) 634-6433
Mike Frendiger	Geograph, Inc.	(512) 266-8614
Jeanna Stoll	Star Signs, LLC	(785) 312-1020
Mike Gessel	ASI Signage Innovations	(314) 421-2288

The meeting proceeded with a general discussion of the planned project and an overview of the drawings and specifications. This memorandum summarizes the proceedings of that meeting. Questions received at the meeting and their corresponding answers are contained within the addendum. Below are the items that were specifically discussed.

### **Review of Specifications**

- Bid Opening Date and Time
  - A discussion was held amongst those present which has led to a change in the date of the bid opening. Bids are now due to the Purchasing Agent by 1:30 P.M. on Tuesday, **April 26, 2016**.
- Final Checklist before Submitting Bid
  - The items to be submitted with the bid are listed and are part of the stapled insert in the spec book.
  - Be aware of some mistakes which will make the bid nonresponsive
    - Not signing the bid and including a corporate seal if the bidder is a corporation
    - Not incorporation the project addendums
    - Using forms other than the ones provided in the bid package
    - Using a pencil to fill in the form, using white out, and not initializing changes

### **Notice to Contractors**

- The Contract time was set with a completion date of October 31, 2016. After discussion at the pre bid meeting the completion date will be changed by addendum to **December 15, 2016**.
- Liquidated damages are set at \$700.00 per day.
- A bid guaranty in the amount of 5% of the bid amount is required
- Federal funds are being expended on this project which bring additional requirements
  - The project will be inspected by City personal but state and federal inspectors may also choose to inspect the job at times and frequencies of their choosing.
  - The contractor is required to pay prevailing wage. The wage to be paid is the higher amount listed in either the state or federal wage orders included in the contract.
- The contractor must be enrolled in the E-Verify Program.
- All workers must have completed a ten hour OSHA training course.
- The contractor is required to meet Buy American requirements.
- The Prime Contractor must perform 30% of the contract work.
- The City will provide a sales tax exemption for the material incorporated into the project.
- The DBE contract goal for the project has been set at 6%. An approved DBE contractor must perform 6% of the total project.

#### Bid Packet

- The bid packet contains an itemized bid form and other information all of which needs to be submitted with the submission of the bid.
- The DBE forms may be submitted with the bid or as described below.

#### DBE Submittal Forms

- The DBE Submittal Forms must be submitted by the low bidder and the second low bidder by 4:00 p.m. three business days after the bid opening. (Friday, April 29, 2016)

#### Required Contract Provisions Federal-Aid Construction Contracts

- The second paragraph of item I. General, states that these very same provisions must be included in every contract that the Prime Contractor signs with a Sub Contactor.

#### Federal Aid Provisions

- The contractor should make himself aware of the requirements for minority participation within his own workforce.

#### Wage Rates

- The Federal Davis Bacon wage rate will be updated as part of the addendum.
  - The applicable Federal Wage Rate for this project is General Decision Number: MO160001 04/01/2016

#### Sample Contract

- A sample contract has been included.

#### Additional Comments

- It is anticipated that the City Council will approve the contract on June 6, 2016. Notice to proceed can be expected in the latter part of June.



Sincerely,

A handwritten signature in cursive script, appearing to read "David Bange".

David Bange  
City Engineer

DB:db

C: Plan Holders  
Meeting Attendees  
Project File  
Writer's File



**CITY OF JEFFERSON  
ITEMIZED BID FORM - REVISED  
JEFFERSON CITY WAYFINDING  
STATE PROJECT NO. TAP-9901 (501)  
PROJECT NO. 32137**

ITEM NO.	DESCRIPTION	UNIT	APPROX. QUANTITY	UNIT PRICE	AMOUNT
1	Mobilization	LS	1		
2	Site Preparation and Restoration (Concrete)	EA	16		
3	Site Preparation and Restoration (Exposed Aggregate Concrete)	EA	10		
4	Site Preparation and Restoration (Turf)	EA	27		
5	Major Boulevard Vehicular Directional Sign	EA	1		
6	District Vehicular Directional Sign	EA	11		
7	Street Parking Directional Sign	EA	12		
8	Pedestrian Directional Sign	EA	6		
9	Information Kiosk/Directory Sign Cabinet	EA	2		
10	Area Map Sign	EA	6		
11	Area Map Insert (Insert for existing sign frame)	EA	1		
12	Bikeway Directional Sign	EA	16		
13	Bikeway Arrow Sign (no destinations)	EA	3		
14	Subdistrict ID Sign	EA	1		
15	Existing Pole Mount Installations (or Additional New Sign on Other New Post)	EA	0		
16	Decorative Post (Large)	EA	1		
17	Decorative Post (Small)	EA	13		
18	Structural Post (W6x9)	EA	2		
19	Pipe Post (3")	EA	2		
20	Pipe Post (3") with System G Coating	EA	3		
21	Pipe Post (4")	EA	5		
22	Pipe Post (4") with System G Coating	EA	5		
23	Perforated Square Steel Tube Post	EA	19		
24	Perforated Square Steel Tube Post with System G Coating	EA	6		

ITEM NO.	DESCRIPTION	UNIT	APPROX. QUANTITY	UNIT PRICE	AMOUNT
25	Concrete Footing for Decorative Post	EA	14		
26	Concrete Footing for Structural Post	EA	2		
27	Concrete Footing for Pipe Post	EA	15		
28	Concrete Footing for PSST Post	EA	19		
<b>TOTAL BASE BID</b>					

---

Signature of Bidder

---

Date