

ADDENDUM NO. 1

DATE: May 20, 2016

PROJECT: Poplar Bluff Municipal Airport Lighting Project

LETTING DATE: May 26, 2016 At 10:00 AM (Local time)

LOCATION: City Hall; Poplar Bluff, Missouri

OWNER: City of Poplar Bluff, Missouri

ENGINEER: Smith & Co. of Poplar Bluff, Missouri

SUBJECT: Section 0090 Measurements and Payments:

- 1) Retainage – Subsection 90-06 and Subsection 90-08 calls for 10 percent retainage. Retainage has been revised to 5 percent. Replace corresponding referenced subsections with attached.

SUBJECT: LED Lighting Clarification

- 1) It is the intent of the project for all proposed lighting to be Light-Emitting Diode (LED) Lights.

SUBJECT: Item D-106 Selective Demolition

- 1) Section 106-3.8 called for the salvage of some of the lighting equipment. This section has been revised and the only item to be salvaged shall be the existing Constant Current Regulator. This item can be left in place once it has been disconnected and is no longer in service. The City of Poplar Bluff will store it in its current location. Replace existing page 19 of the FAA Specifications with attached.

SUBJECT: Plan Sheet 4

- 1) The Runway Threshold/Edge Lights at the end of Runway 18 have been changed from Obscured/Red to Green/Red. Please replace Plan Sheet 4 with attached.
- 2) Bid Item L-125-5.6 has also been revised to indicate this revision. Please replace corresponding contract document sheets with the attached pages.

SUBJECT: Airport Precision Path Indicator (PAPI) Clarification

- 1) The PAPI System is L-881. The intent is to have 4 individual box systems with 2 light units in each box as is the existing condition.

SUBJECT: Plan Sheet 7

- 1) The Typical Trench And Wire Placement Detail has been revised. The Counter Poise wire was changed from #8 AWG to #6 AWG. Please exchange Plan Sheet 7 with attached.

SUBJECT: VASI Concrete Approach Slab Clarification

- 1) The Concrete Slab to the VASI equipment was not shown on the plan sheets. The contractor shall have the option of boring under the slab and pulling the wire through or saw cutting, trenching and reconstructing the approach slab.
- 2) The cost for this work shall be incidental to Bid Item L-108-5.1: Trenching for Direct Cable and Counter Poise Wire.

SUBJECT: Construction Phasing Clarification

- 1) The Existing Construction Phasing on Plan Sheet 3 states that the Runway shall be closed for 90 Days during construction. While this statement is correct, it shall be noted that the runway closure within those 90 Days shall be from the established time period of 8:00 A.M. to 8:00 P.M. per calendar day. This will allow morning traffic to leave and leave some daylight for evening traffic.
- 2) There shall be no open trenches during non-working hours or periods of time that there is no construction.
- 3) The airport closures shall be coordinated with Airport Manager. It is the contractor's responsibility to coordinate with Airport Manager during construction.

Sincerely,

SMITH & CO.
ENGINEERS



Dominic Thompson, P.E.
Project Manager



from his/her stock, that the quantity claimed was actually used, and that the price and transportation claimed represent the actual cost to the Contractor.

90-06 PARTIAL PAYMENTS. Partial payments will be made at least once each month as the work progresses. Said payments will be based upon estimates prepared by the Engineer of the value of the work performed and materials complete in place in accordance with the contract, plans, and specifications. Such partial payments may also include the delivered actual cost of those materials stockpiled and stored in accordance with the subsection titled PAYMENT FOR MATERIALS ON HAND of this section.

No partial payment will be made when the amount due the Contractor since the last estimate amounts to less than five hundred dollars.

From the total of the amount determined to be payable on a partial payment, 5 percent of such total amount will be deducted and retained by the Owner until the final payment is made, except as may be provided (at the Contractor's option) in the subsection titled PAYMENT OF WITHHELD FUNDS of this section. The balance (90 percent) of the amount payable, less all previous payments, shall be certified for payment. Should the Contractor exercise his/her option, as provided in the subsection titled PAYMENT OF WITHHELD FUNDS of this section, no such 5 percent retainage shall be deducted.

When not less than 95 percent of the work has been completed, the Engineer may, at the Owner's discretion and with the consent of the surety, prepare an estimate from which will be retained an amount not less than twice the contract value or estimated cost, whichever is greater, of the work remaining to be done. The remainder, less all previous payments and deductions, will then be certified for payment to the Contractor.

It is understood and agreed that the Contractor shall not be entitled to demand or receive partial payment based on quantities of work in excess of those provided in the proposal or covered by approved change orders or supplemental agreements, except when such excess quantities have been determined by the Engineer to be a part of the final quantity for the item of work in question.

No partial payment shall bind the Owner to the acceptance of any materials or work in place as to quality or quantity. All partial payments are subject to correction at the time of final payment as provided in the subsection titled ACCEPTANCE AND FINAL PAYMENT of this section.

The Contractor shall deliver to the Owner a complete release of all claims for labor and material arising out of this contract before the final retained percentage or final payment is made. If any subcontractor or supplier fails to furnish such a release in full, the Contractor may furnish a bond or other collateral satisfactory to the Owner to indemnify the Owner against any potential lien or other such claim. The bond or collateral shall include all costs, expenses, and attorney fees the Owner may be compelled to pay in discharging any such lien or claim.

90-07 PAYMENT FOR MATERIALS ON HAND. Partial payments may be made to the extent of the delivered cost of materials to be incorporated in the work, provided that such materials meet the requirements of the contract, plans, and specifications and are delivered to acceptable sites on the airport property or at other sites in the vicinity that are acceptable to the Owner. Such delivered costs of stored or stockpiled materials may be included in the next partial payment after the following conditions are met:

- a. The material has been stored or stockpiled in a manner acceptable to the Engineer at or on an approved site.
- b. The Contractor has furnished the Engineer with acceptable evidence of the quantity and quality of such stored or stockpiled materials.
- c. The Contractor has furnished the Engineer with satisfactory evidence that the material and transportation costs have been paid.
- d. The Contractor has furnished the Owner legal title (free of liens or encumbrances of any kind) to the material so stored or stockpiled.
- e. The Contractor has furnished the Owner evidence that the material so stored or stockpiled is insured against loss by damage to or disappearance of such materials at anytime prior to use in the work.

It is understood and agreed that the transfer of title and the Owner's payment for such stored or stockpiled materials shall in no way relieve the Contractor of his/her responsibility for furnishing and placing such materials in accordance with the requirements of the contract, plans, and specifications.

In no case will the amount of partial payments for materials on hand exceed the contract price for such materials or the contract price for the contract item in which the material is intended to be used.

No partial payment will be made for stored or stockpiled living or perishable plant materials.

The Contractor shall bear all costs associated with the partial payment of stored or stockpiled materials in accordance with the provisions of this subsection.

90-08 PAYMENT OF WITHHELD FUNDS. At the Contractor's option, he/she may request that the Owner accept (in lieu of the 5 percent retainage on partial payments described in the subsection titled PARTIAL PAYMENTS of this section) the Contractor's deposits in escrow under the following conditions.

- a. The Contractor shall bear all expenses of establishing and maintaining an escrow account and escrow agreement acceptable to the Owner.
- b. The Contractor shall deposit to and maintain in such escrow only those securities or bank certificates of deposit as are acceptable to the Owner and having a value not less than the 5 percent retainage that would otherwise be withheld from partial payment.
- c. The Contractor shall enter into an escrow agreement satisfactory to the Owner.
- d. The Contractor shall obtain the written consent of the surety to such agreement.

90-09 ACCEPTANCE AND FINAL PAYMENT. When the contract work has been accepted in accordance with the requirements of the subsection titled FINAL ACCEPTANCE of Section 50, the Engineer will prepare the final estimate of the items of work actually performed. The Contractor shall approve the Engineer's final estimate or advise the Engineer of his/her objections to the final estimate which are based on disputes in measurements or computations of the final quantities to be paid under the contract as amended by change order or supplemental agreement. The Contractor and the Engineer shall resolve all disputes (if any) in the measurement and computation of final quantities to be paid within 30 calendar days of the Contractor's receipt of the Engineer's final estimate. If, after such 30-day period, a dispute still exists, the Contractor may approve the Engineer's estimate under protest of the quantities in dispute, and such disputed quantities shall be considered by the Owner as a claim in accordance with the subsection titled CLAIMS FOR ADJUSTMENT AND DISPUTES of Section 50.

After the Contractor has approved, or approved under protest, the Engineer's final estimate, final payment will be processed based on the entire sum, or the undisputed sum in case of approval under protest, determined to be due the Contractor less all previous payments and all amounts to be deducted under the provisions of the contract. All prior partial estimates and payments shall be subject to correction in the final estimate and payment.

If the Contractor has filed a claim for additional compensation under the provisions of the subsection titled CLAIMS FOR ADJUSTMENTS AND DISPUTES of Section 50 or under the provisions of this subsection, such claims will be considered by the Owner in accordance with local laws or ordinances. Upon final adjudication of such claims, any additional payment determined to be due the Contractor will be paid pursuant to a supplemental final estimate.

END OF SECTION 90

(5) Cost of property damage, liability and workman's compensation insurance premiums, unemployment insurance contributions, and social security tax.

Statements shall be accompanied and supported by a receipted invoice for all materials used and transportation charges. However, if materials used on the force account work are not specifically purchased for such work but are taken from the Contractor's stock, then in lieu of the invoices the Contractor shall furnish an affidavit certifying that such materials were taken from his/her stock, that the quantity claimed was actually used, and that the price and transportation claimed represent the actual cost to the Contractor.

90-06 PARTIAL PAYMENTS. Partial payments will be made at least once each month as the work progresses. Said payments will be based upon estimates prepared by the Engineer of the value of the work performed and materials complete in place in accordance with the contract, plans, and specifications. Such partial payments may also include the delivered actual cost of those materials stockpiled and stored in accordance with the subsection titled PAYMENT FOR MATERIALS ON HAND of this section.

No partial payment will be made when the amount due the Contractor since the last estimate amounts to less than five hundred dollars.

From the total of the amount determined to be payable on a partial payment, 5 percent of such total amount will be deducted and retained by the Owner until the final payment is made, except as may be provided (at the Contractor's option) in the subsection titled PAYMENT OF WITHHELD FUNDS of this section. The balance (95 percent) of the amount payable, less all previous payments, shall be certified for payment. Should the Contractor exercise his/her option, as provided in the subsection titled PAYMENT OF WITHHELD FUNDS of this section, no such 5 percent retainage shall be deducted.

When not less than 95 percent of the work has been completed, the Engineer may, at the Owner's discretion and with the consent of the surety, prepare an estimate from which will be retained an amount not less than twice the contract value or estimated cost, whichever is greater, of the work remaining to be done. The remainder, less all previous payments and deductions, will then be certified for payment to the Contractor.

It is understood and agreed that the Contractor shall not be entitled to demand or receive partial payment based on quantities of work in excess of those provided in the proposal or covered by approved change orders or supplemental agreements, except when such excess quantities have been determined by the Engineer to be a part of the final quantity for the item of work in question.

No partial payment shall bind the Owner to the acceptance of any materials or work in place as to quality or quantity. All partial payments are subject to correction at the time of final payment as provided in the subsection titled ACCEPTANCE AND FINAL PAYMENT of this section.

90-07 PAYMENT FOR MATERIALS ON HAND. Partial payments may be made to the extent of the delivered cost of materials to be incorporated in the work, provided that such materials meet the requirements of the contract, plans, and specifications and are delivered to acceptable sites on the airport property or at other sites in the vicinity that are acceptable to the Owner. Such delivered costs of stored or stockpiled materials may be included in the next partial payment after the following conditions are met:

- a. The material has been stored or stockpiled in a manner acceptable to the Engineer at or on an approved site.
- b. The Contractor has furnished the Engineer with acceptable evidence of the quantity and quality of such stored or stockpiled materials.
- c. The Contractor has furnished the Engineer with satisfactory evidence that the material and transportation costs have been paid.
- d. The Contractor has furnished the Owner legal title (free of liens or encumbrances of any kind) to the material so stored or stockpiled.

e. The Contractor has furnished the Owner evidence that the material so stored or stockpiled is insured against loss by damage to or disappearance of such materials at anytime prior to use in the work.

It is understood and agreed that the transfer of title and the Owner's payment for such stored or stockpiled materials shall in no way relieve the Contractor of his/her responsibility for furnishing and placing such materials in accordance with the requirements of the contract, plans, and specifications.

In no case will the amount of partial payments for materials on hand exceed the contract price for such materials or the contract price for the contract item in which the material is intended to be used.

No partial payment will be made for stored or stockpiled living or perishable plant materials.

The Contractor shall bear all costs associated with the partial payment of stored or stockpiled materials in accordance with the provisions of this subsection.

90-08 PAYMENT OF WITHHELD FUNDS. At the Contractor's option, he/she may request that the Owner accept (in lieu of the 5 percent retainage on partial payments described in the subsection titled PARTIAL PAYMENTS of this section) the Contractor's deposits in escrow under the following conditions.

a. The Contractor shall bear all expenses of establishing and maintaining an escrow account and escrow agreement acceptable to the Owner.

b. The Contractor shall deposit to and maintain in such escrow only those securities or bank certificates of deposit as are acceptable to the Owner and having a value not less than the 5 percent retainage that would otherwise be withheld from partial payment.

c. The Contractor shall enter into an escrow agreement satisfactory to the Owner.

d. The Contractor shall obtain the written consent of the surety to such agreement.

90-09 ACCEPTANCE AND FINAL PAYMENT. When the contract work has been accepted in accordance with the requirements of the subsection titled FINAL ACCEPTANCE of Section 50, the Engineer will prepare the final estimate of the items of work actually performed. The Contractor shall approve the Engineer's final estimate or advise the Engineer of his/her objections to the final estimate which are based on disputes in measurements or computations of the final quantities to be paid under the contract as amended by change order or supplemental agreement. The Contractor and the Engineer shall resolve all disputes (if any) in the measurement and computation of final quantities to be paid within 30 calendar days of the Contractor's receipt of the Engineer's final estimate. If, after such 30-day period, a dispute still exists, the Contractor may approve the Engineer's estimate under protest of the quantities in dispute, and such disputed quantities shall be considered by the Owner as a claim in accordance with the subsection titled CLAIMS FOR ADJUSTMENT AND DISPUTES of Section 50.

After the Contractor has approved, or approved under protest, the Engineer's final estimate, final payment will be processed based on the entire sum, or the undisputed sum in case of approval under protest, determined to be due the Contractor less all previous payments and all amounts to be deducted under the provisions of the contract. All prior partial estimates and payments shall be subject to correction in the final estimate and payment.

If the Contractor has filed a claim for additional compensation under the provisions of the subsection titled CLAIMS FOR ADJUSTMENTS AND DISPUTES of Section 50 or under the provisions of this subsection, such claims will be considered by the Owner in accordance with local laws or ordinances. Upon final adjudication of such claims, any additional payment determined to be due the Contractor will be paid pursuant to a supplemental final estimate.

90-10 CONSTRUCTION WARRANTY. In addition to any other warranties in this contract, the Contractor warrants that work performed under this contract conforms to the contract requirements and is free of any defect in equipment, material, or design furnished, or workmanship performed by the Contractor or any subcontractor or supplier at any tier. **This warranty shall continue for a period of 1 year from the date of final acceptance of the work.** If the Owner takes possession of any part of the work before final acceptance, this warranty shall continue for a period of 1 year from the date the Owner takes possession.

- C. Disposal: Transport demolished materials off Owner's property and legally dispose of them.

106-3.8 SELECTIVE DEMOLITION SCHEDULE

- A. Existing Items to Be Removed and Salvaged:
 - 1. Existing Constant Current Regulator
- B. Existing Items to Be Removed and Reinstalled:
 - 1. Power for Lighting and Receps.
- C. Existing Items to be Disconnected and Abandoned.
 - 1. Cable serving runway lights.
- D. Existing Items to Be Removed
 - 1. Trees within Runway Safety Zone
 - 2. Power Pole Within Runway Safety Zone – Contractor Responsible for Coordinating with Utility Company
 - 3. Runway Lights and Accessories.
 - 4. Pilot Radio Control Receiver.
 - 5. REIL's
 - 6. PAPI – If Alternate No. 1 is selected.
 - 7. Taxiway Reflectors

106-3.9 METHOD OF MEASUREMENT

- A. This item will be measured for lump sum for all items cited in 106-3.10 of this specification and as shown on the plans.

106-3.10 BASIS OF PAYMENT

- A. Payment will be made for the contract lump sum price for "Demolition" under: D-106-3.10 Demolition – Lump Sum.

END OF SECTION 106

- L-125-5.1 Airport Runway Edge LED Lights (White) Medium Intensity Stake Mounted -- per each
- L-125-5.2 Airport Runway End/Threshold LED Lights (Red) Medium Intensity Stake Mounted-- per each
- L-125-5.3 Airport Runway Threshold/Edge LED Lights (Yellow/Red) Medium Intensity Stake Mounted-- per each
- L-125-5.4 Airport Runway Threshold/Edge LED Lights (Yellow/White) Medium Intensity Stake Mounted-- per each
- L-125-5.5 Airport Runway Threshold/Edge LED Lights (White/Yellow) Medium Intensity Stake Mounted-- per each
- L-125-5.6 Airport Runway Threshold/Edge LED Lights (Green/Red) Medium Intensity Stake Mounted-- per each
- L-125-5.7 Airport Runway Threshold/Edge LED Lights (Obscured/Green) Medium Intensity Stake Mounted-- per each
- L-125-5.8 Airport Taxiway Edge LED Lights (Blue) Medium Intensity Stake Mounted-- per each
- L-125-5.9 Airport Taxiway Guidance Signs -- per each
- L-125-5.10 Airport Runway End Identification Light (REIL) System -- per each

MATERIAL REQUIREMENTS

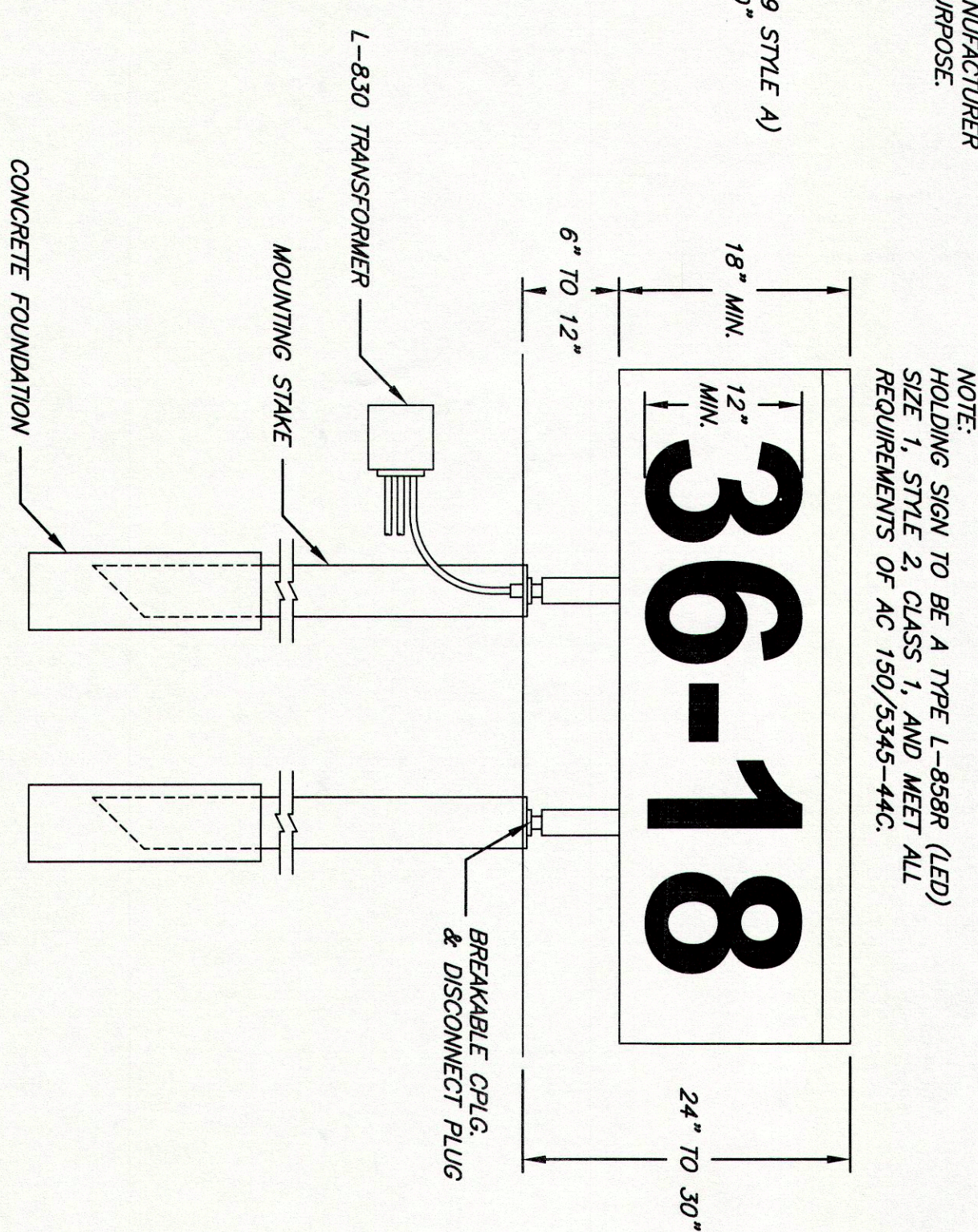
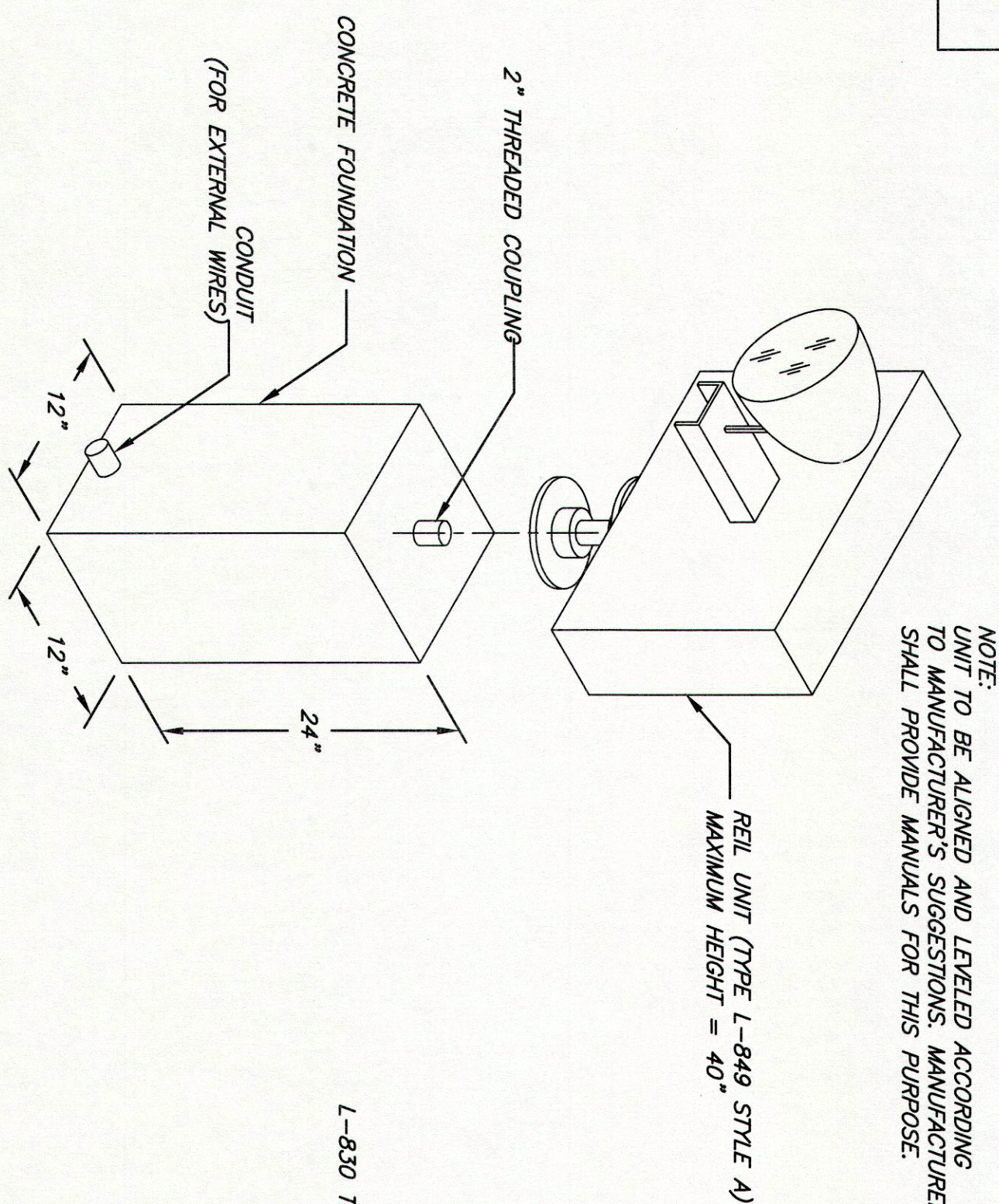
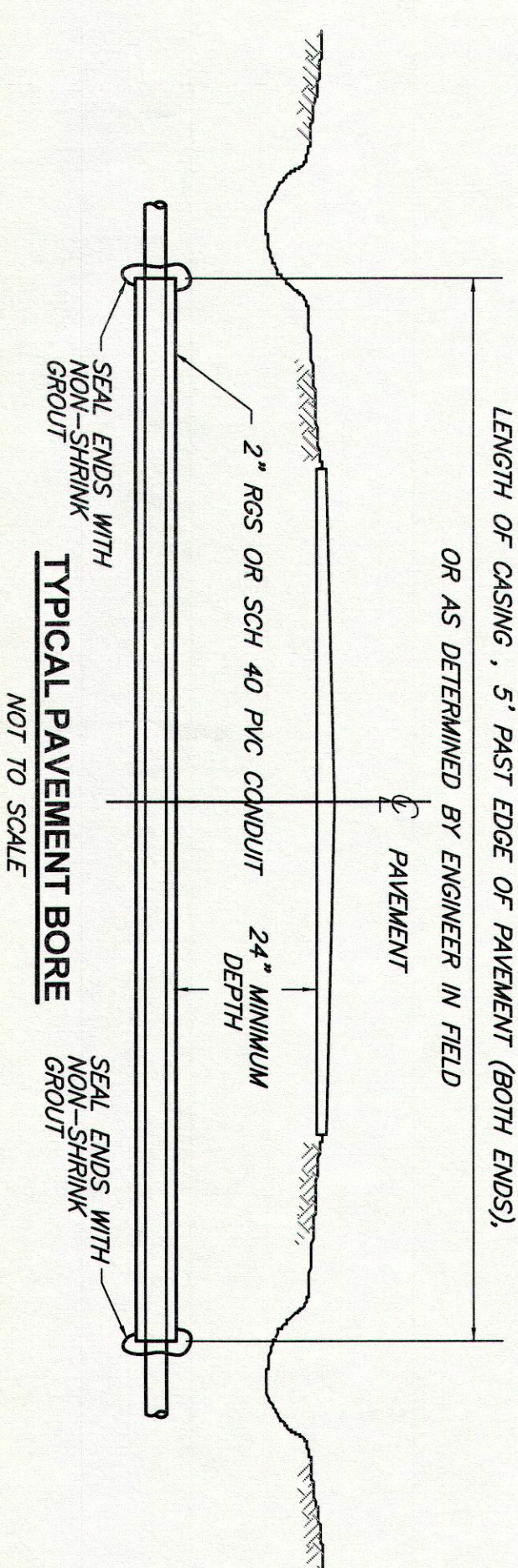
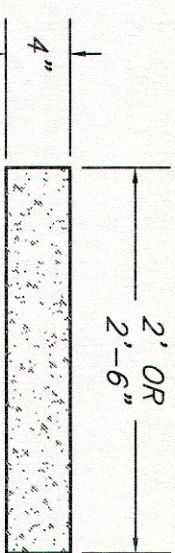
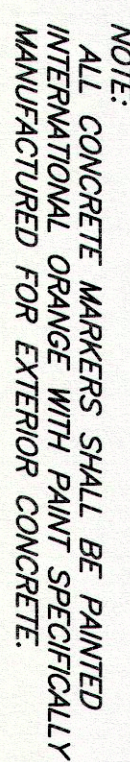
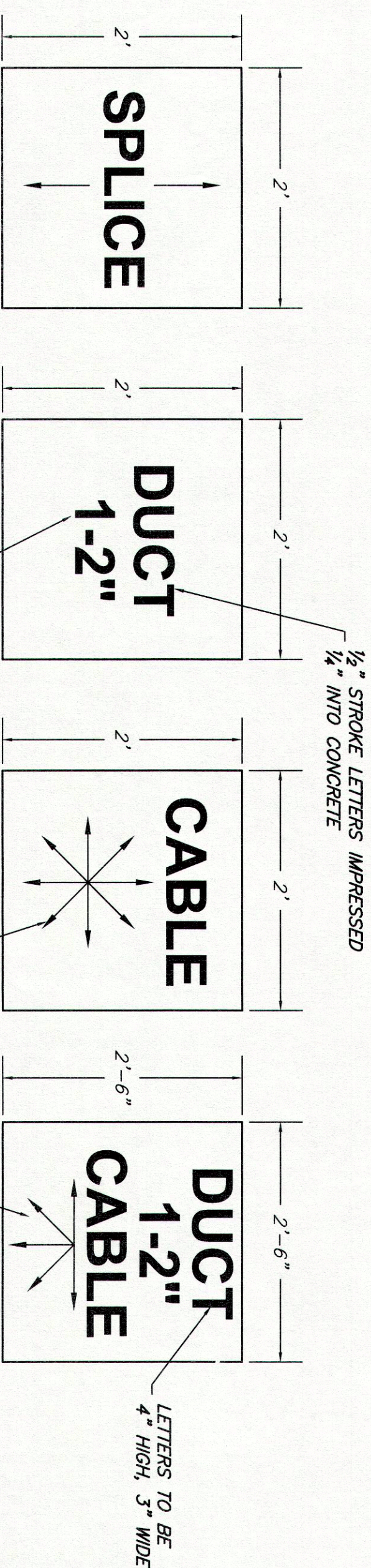
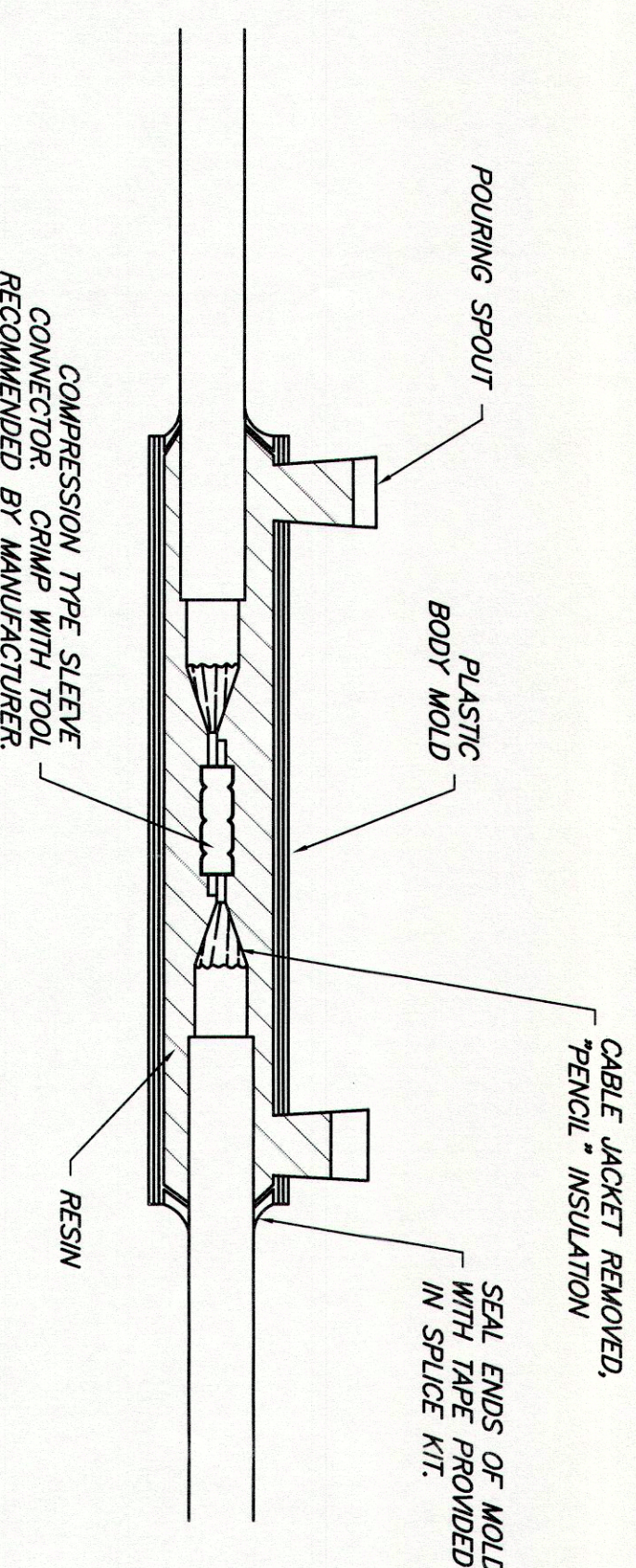
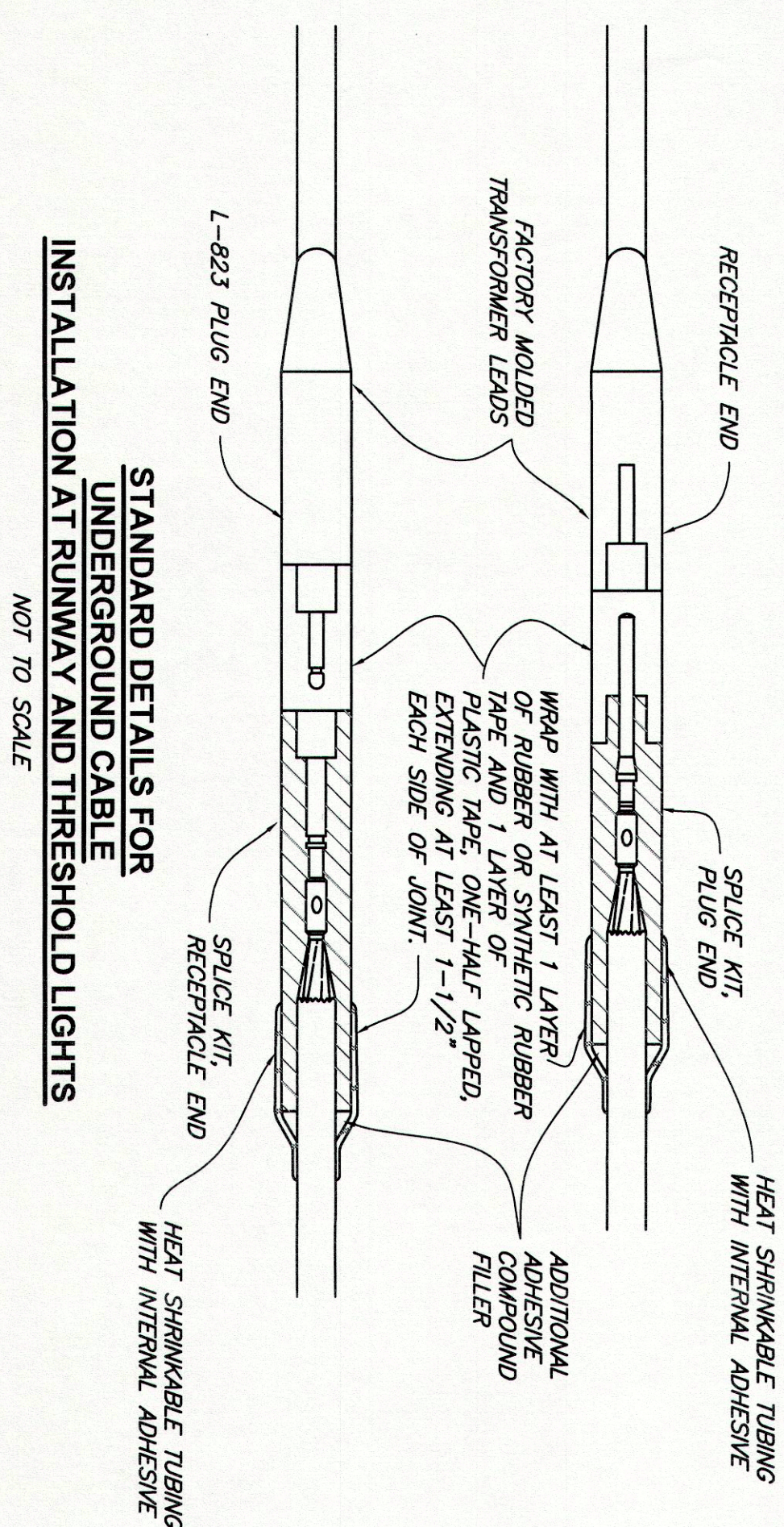
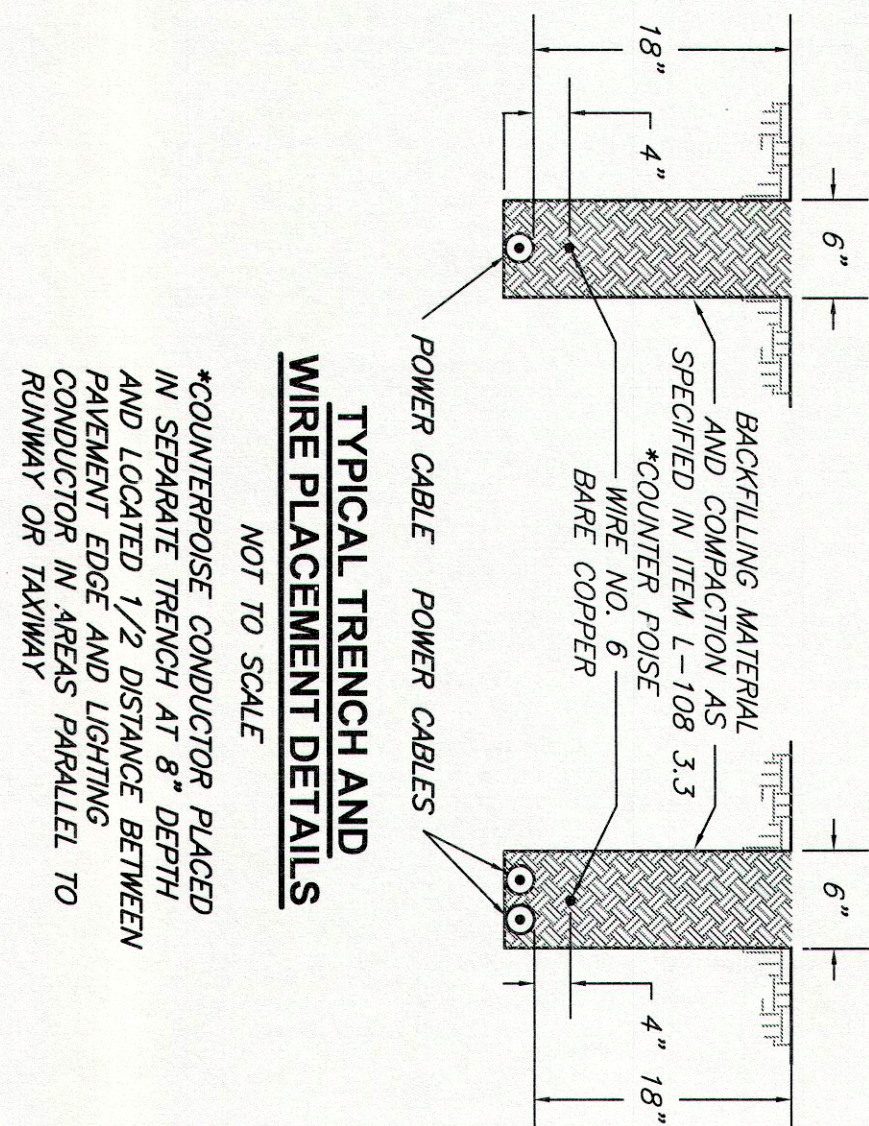
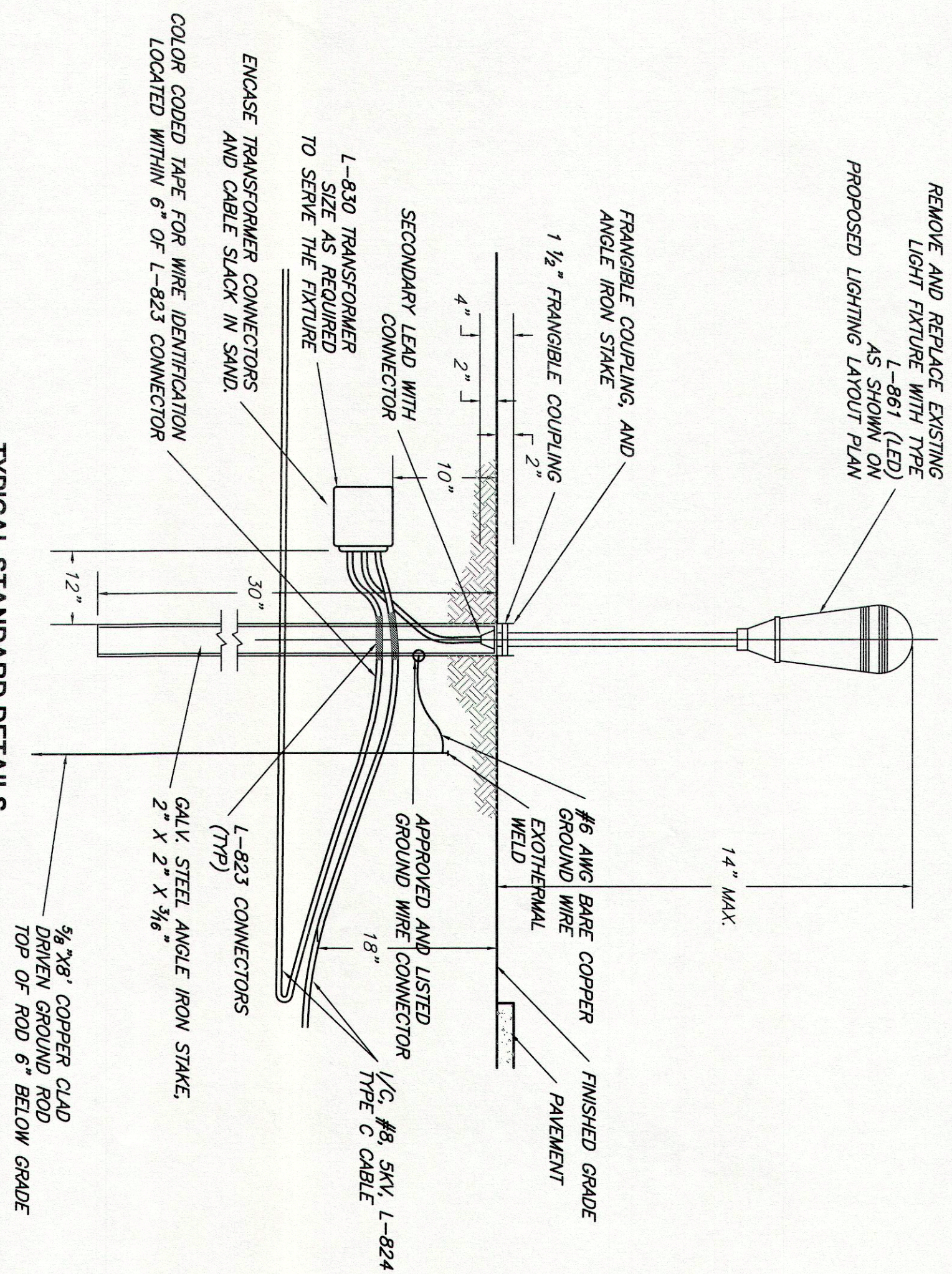
Fed.Spec.W-C-1094	Conduit and Conduit Fittings; Plastic, Rigid (cancelled; replaced by UL 514 Boxes, Nonmetallic Outlet, Flush Device Boxes, & Covers, and UL 651 Standard for Conduit & Rigid PVC)
Underwriters Laboratories Standard 6	Rigid Metal Conduit
Underwriters Laboratories Standard 514B	Fittings for Cable and Conduit
Underwriters Laboratories Standard 1242	Intermediate Metal Conduit
Underwriters Laboratories Standard 651	Schedule 40 and 80 Rigid PVC Conduit (for Direct Burial)
Underwriters Laboratories concrete encasement)	Type EB and A Rigid PVC Conduit and HDPE Conduit(for Standard 651A
AC 150/5340-18	Standards For Airport Sign Systems
AC 150/5340-30	Design and Installation Details for Airport Visual Aids
AC 150/5345-42	Specification for Airport Light Bases, Transformer Housing, Junction Boxes, and Accessories
AC 150/5345-44	Specification for Taxiway and Runway Signs
AC 150/5345-46	Specification for Runway and Taxiway Light Fixtures
AC 150/5345-47	Isolation Transformers for Airport Light Systems
AC 150/5345-51	Specification for Discharge-Type Flashing Light Equipment

L-125-5.5	Airport Runway Threshold/Edge LED Lights (White/Yellow)	EA	11				
L-125-5.6	Airport Runway Threshold/Edge LED Lights (Green/Red)	EA	8				
L-125-5.7	Airport Runway Threshold/Edge LED Lights (Obscured/Green)	EA	3				
L-125-5.8	Airport Taxiway Edge LED Lights (Blue)	EA	139				
L-125-5.9	Airport Taxiway Guidance Sign (L-858)	EA	4				
L-125-5.10	Airport Runway End Identification Light (REIL) System	EA	4				
L-111-6.1	Radio Controlled Lighting Receiver	EA	1				
TOTAL BID (Base Bid)							

BID ALTERNATE NO. 1							
BID ITEM	FAA or MoDOT SPEC.	ITEM DESCRIPTION	APPROX. QUANTITY AND UNITS	UNIT PRICE		EXTENSION	
				DOLLARS	CTS	DOLLARS	CTS
MO-120-5.1	Airport Precision Path Indicator (PAPI)	EA	1				
TOTAL (Bid Alternate No. 1)							
TOTAL BID (Base Bid + Bid Alternate No.1)							

ACKNOWLEDGEMENTS BY BIDDER

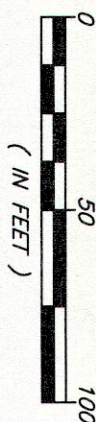
- a. By submittal of a proposal, the BIDDER acknowledges and accepts that the quantities established by the OWNER are an approximate estimate of the quantities required to fully complete the Project and that the estimated quantities are principally intended to serve as a basis for evaluation of bids. The BIDDER further acknowledges and accepts that payment under this contract will be made only for actual quantities and that quantities will vary in accordance with the General Provisions subsection entitled "Alteration of Work and Quantities".
- b. The BIDDER acknowledges and accepts that the Bid Documents are comprised of the documents identified within the General Provisions. The BIDDER further acknowledges that each the individual documents that comprise the Bid Documents are complementary to one another and together establishes the complete terms, conditions and obligations of the successful BIDDER.
- c. As evidence of good faith in submitting this proposal, the undersigned encloses a bid guaranty in the form of a certified check, cashier's check or bid bond in the amount of 5% of the bid price. The BIDDER acknowledges and accepts that refusal or failure to accept award and execute a contract within the terms and



KEYED NOTES - LIGHTING LAYOUT PLAN

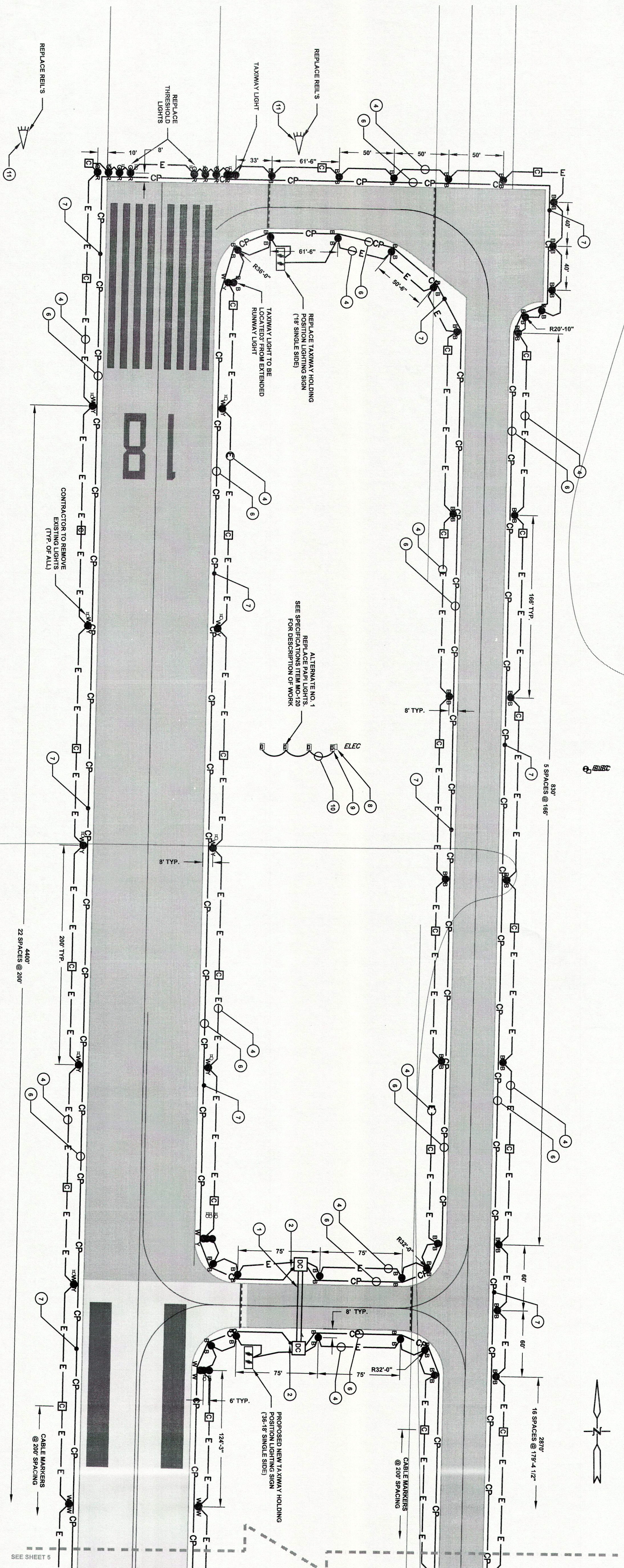
- 1) BORE 24" BELOW PAVEMENT AND PLACE 2" RSS CONDUIT OR PVC SCHEDULE 40 RISIG CONDUIT. EXTEND CONDUIT OUT 6" FROM EDGE OF PAVEMENT. PLACE #6 AWG BARE COPPER WIRE ABOVE CONDUIT. SEAL ENDS OF CONDUIT WITH APPROVED SEALING MATERIAL.
- 2) REMOVE EXISTING PAVEMENT AND PLACE 2" RSS CONDUIT OR PVC SCHEDULE 40 CONDUIT. EXTEND CONDUIT OUT 6" FROM EDGE OF PAVEMENT. PLACE #6 AWG BARE COPPER WIRE ABOVE CONDUIT. SEAL ENDS OF CONDUIT WITH APPROVED SEALING MATERIAL.
- 3) 2 AWG, 1 CONDUCTOR 8KV, -824 LIGHTING CABLE AND 1 - #6 AWG BARE COPPER CONTOURPOSE CONDUCTOR BURIED 18" BELOW GRADE WITH MAGNETIC WARNING RIBBON PLACED 12" ABOVE CABLE (SEE DETAIL SHEET #7).
- 4) 1 - #8, 1 CONDUCTOR 8KV, -824 LIGHTING CABLE BURIED 18" BELOW GRADE WITH MAGNETIC WARNING RIBBON PLACED 12" ABOVE CABLE. (SEE DETAIL SHEET #7).
- 5) 1 - #8, 1 CONDUCTOR 8KV, -824 LIGHTING CABLE AND 1 - #6 AWG BARE COPPER CONTOURPOSE CONDUCTOR BURIED 18" BELOW GRADE WITH MAGNETIC WARNING RIBBON PLACED 12" ABOVE CABLE (SEE DETAIL SHEET #7).
- 6) #6 AWG BARE COPPER CONTOURPOSE CONDUCTOR BURIED 47" BELOW GRADE AND HALF THE DISTANCE FROM EDGE OF RUNWAY OR TAXIWAY PAVEMENT TO LIGHTING CABLE.
- 7) 6# X 8' LISTED COPPER CLAD DRYEN GROUND ROD EXOTHERMICALLY CONNECTED TO #6 AWG EXISTING 120/240V/1P PHASE. SPACED NO FURTHER THAN 500' APART.
- 8) EXISTING 120/240V/1P PHASE - 100 M.L. BRK. PANEL. REPLACE EXISTING BARKS WITH 1 - 250/2P BRK. (NORTH REL'S), 1 - 204/1P BRK. (PAPI LIGHTS), AND 1 - 204/1P BRK. (ANTENNA CONTROLLER)
- 9) REMOVE EXISTING PAPI LIGHT CONTROL, BOX AND ANTENNA RECEIVER CONTROL, BOX AND REPLACE WITH NEW PAPI LIGHT CONTROL, BOX AND ANTENNA RECEIVER CONTROL, BOX. PROVIDE 2 POLE, 20A, 120V CIRC. CONTACTOR IN PAPI CONTROL, BOX FOR CONTROL OF NORTH REL'S. NORTH REL'S TO BE ACTIVATED WITH PAPI LIGHTS. COORDINATE PAPI AND REL LIGHTS INTENSITY WITH AIRPORT MANAGER.
- 10) PURNISH AND INSTALL, NEW CONDUIT AND WIRING AS REQUIRED FOR PAPI CONTROLLER AND LIGHTS.
- 11) REMOVE AND REPLACE EXISTING REL LIGHTS AND CONTROLLER AND CONNECT TO EXISTING WIRING. PROVIDE 2 POLE, 20A, 120V CIRC. CONTACTOR IN REL LIGHTS AND CONTROLLER. ALL WIRING TO VERIFY EXISTING VOLTAGE AND INSTALL NEW REL'S TO OPERATE ON EXISTING VOLTAGE.
- 12) REMOVE AND REPLACE EXISTING REL LIGHTS ANTENNA RECEIVER CONTROL, BOX AND CONNECT TO EXISTING WIRING.
- 13) REMOVE AND REPLACE EXISTING 120/240V/1P PHASE/100A M.L.O. CIRC. NEMA 3S BRK. PANEL. PURNISH AND INSTALL 1 - 204/2P BRK. AND 1 - 204/1P BRK. CONNECT TO EXISTING WIRING.
- 14) DISCONNECT AND REMOVE EXISTING COR. RADIO RECEIVER, RADIO ANTENNA, AND PHOTO CELL. REMOVE ITEMS TO BE RETURNED TO OWNER.

LAYOUT PLAN



1. LIGHTING LAYOUT SHALL MEET A: 516.05.4-300 OF THE FEDERAL AVIATION'S DESIGN AND INSTALLATION DETAILS SPECIFICATIONS, AND DATED 7/21/2014.
2. CONTRACTOR IS RESPONSIBLE FOR FINAL LAYOUT
3. CONTRACTOR IS TO REMOVE AND DISPOSE OF EXISTING TASK DIRECTORS.
4. CONTRACTOR IS TO REMOVE AND DISPOSE OF EXISTING RUNWAY LIGHTS, THRESHOLD LIGHTS AND LIGHTING TRANSFORMERS, EXISTING LIGHTING WIRING AND COUNTERPOISE WIRING IS TO BE ABANDONED.

LEGEND			
DESCRIPTION	SYMBOL	DESCRIPTION	SYMBOL
		PROPOSED TAXIWAY BLUE LIGHT	
		PROPOSED DUCT MARKERS	
EXISTING RUNWAY AND THRESHOLD LIGHTS		PROPOSED Z DUCT	
EXISTING PAVEMENT		PROPOSED BURIED ELECTRICAL CABLE	
		PROPOSED HOLDING POSITION SIGN	
EXISTING REL.		EXISTING HOLDING POSITION SIGN	
PROPOSED THRESHOLD LIGHTS W/ 300' RED GLOBE		EXISTING TAXI LIGHTS	
		PROPOSED THRESHOLD LIGHTS W/ 160' WHITE GLOBE AND 160' YELLOW GLOBE	
		PROPOSED RUNWAY LIGHTS W/ 300' WHITE GLOBE	
		PROPOSED THRESHOLD LIGHTS W/ 180' OBSOURED GLOBE	
		PROPOSED THRESHOLD LIGHTS W/ 160' GREEN GLOBE	
PROPOSED CABLE MARKER		PROPOSED BURIED COUNTERPOSE CONDUCTOR	
PROPOSED COMBINATION DUCT/CABLE MARKER		PROPOSED THRESHOLD LIGHT WITH 160' YELLOW GLOBE AND 160' RED GLOBE	



RUNWAY AND TAXIWAY LIGHTING SYSTEM IMPROVEMENTS POPLAR BLUFF, MISSOURI

PROPOSED LIGHTING LAYOUT PLAN

PROJECT #: P150254
SHEET: 4

ESTABLISHED 1968 AN EMPLOYEE OWNED COMPANY

SMITH & CO.

ENGINEERS

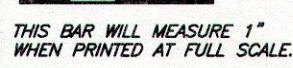
901 VINE STREET; P.O. BOX 7
POPULAR BLUFF, MISSOURI 63902
(573) 785-9861 FAX: (573) 785-2651 WWW.SHSMITHCO.COM

CIVIL ENGINEERING • SURVEYING •
ENVIRONMENTAL & GEOTECHNICAL SERVICES • MATERIAL TESTING



SURVEYED BY: N/A
DESIGNED BY: DDT
DRAWN BY: AFS
CHECKED BY: DDT
FIELD BOOK: N/A

DATE: N/A
DATE: 1/16
DATE: 1/16
DATE: 1/16

[illegible]

MO# F2-2000013010
S.H. SMITH & COMPANY
CERT.# E-616-D

SEA

