

ADDENDA COVER PAGE

The following Addenda have been currently released for this project. Only Addendum #1 is attached to this cover page:

1. Addendum #1, 05/03/16

Please continue to monitor the Drexel Technologies website for additional Addenda, if any, for this project. This cover sheet will reflect additional Addenda and the attachments to this cover page will include any and all current Addenda as they are published.

Note: Contractor is required to acknowledge receipt of all Addenda. Acknowledgement of addenda (addendum number and date of receipt) shall be recorded within the submitted bidder's forms within the sealed envelope, easily visible so they may be recognized and recorded at the bid opening. Failure to acknowledge receipt could result in Contractor not being recommended for award of contract.

ADDENDUM # 1

TO THE DRAWINGS AND SPECIFICATIONS FOR:

**Waterford Crossing Drive and Highway K Intersection Imp.
CMAQ-7302(649)**

City of O'Fallon, Missouri
100 North Main Street
O'Fallon, Missouri 63366

City of O'Fallon, Missouri
100 North Main Street
O'Fallon, MO 63366
636-379-5492
636-978-4144 Fax
E-mail: dbuesse@ofallon.mo.us

Tuesday May 3, 2016

All addenda and information included in them shall be considered part of the contract documents. Receipt of all addenda for this project shall be shown within the bid submission as described in the specifications. The following are clarifications, revisions of the contract documents and additional information:

I. PLANS:

Plan Sheet 3 – “Quantities Sheet 1 of 1”

The bid item “REMOVE AND REPLACE WIRELESS
ACCESS POINT OR REPEATER” has been adjusted to show the correct quantity.

II. SPECIFICATIONS:

Bid Form:

The following line items have been adjusted to show the correct descriptions and/or quantities:

- Line Item 42 & 43
- Line Items 50 through 64

The following line item has been crossed out and removed:

- Line Item 49

III. Q&A

***Q:** Could you explain more as to where the Rem & Replace Wireless Access Point or Repeater are located the plans are not very clear?*

A: See attached document that explains the location of the SENSYS repeater. It should be removed and relocated to pole #2, as noted on plan sheet 6, and as described in section AA of the Job Special Provisions (JSPs).

***Q:** On Sheet 16 in the detector schedule box Note No 2 makes reference to No direct pay for the required number of 2 channel detector cards, shall be included in the cost of the push button detectors. This has nothing to do with the push button detectors. There a total of 12 ea Standard 2 Channel Detector Cards shown but actually there are a total of 6 required. These cards on past projects have always been a Pay Item. I am assuming*

this intersection is operated by Loop Detection now and if so these cards are already in the controller and are not required to be added by this contract.

A: Any additional detector cards (if they are needed or not) would be included in the cost of the push button assemblies.

ALL BIDDERS MUST SIGN THIS ADDENDUM IN THE SPACE PROVIDED BELOW
AND ATTACH IT TO THEIR BID PROPOSAL.

ADDENDUM NO. 1

ACKNOWLEDGED BY: _____

FIRM'S NAME: _____

PAVEMENT AND ENTRANCES									
LOCATION				TYPE 5 AGGREGATE 4" THICK (SQ YD)	CONCRETE PAVEMENT (8" NON-REINFORCED) (SQ YD)	GRAVEL (A) OR CRUSHED STONE (B) (SQ YD)	FULL DEPTH SAW CUT (FT)	INTEGRAL CURB TYPE A (6 IN. AND UNDER) (LIN FT)	INTEGRAL CURB TYPE M (LIN FT)
ROAD	SIDE	STATION	STATION						
WATERFORD	RT	5+27.00	9+57.65	1021.5	938.9	23.0	535.0	393.0	101.0
WATERFORD	LT	9+43.95	9+47.29				5.0	5.0	
WATERFORD	LT	9+52.83	9+53.67				3.0	3.0	
PHEASANT MEADOWS	LT	10+56.91	10+60.46				8.0	8.0	
PHEASANT MEADOWS	LT	10+68.11	10+72.29				5.0	5.0	
PHEASANT MEADOWS	LT	10+73.32	10+74.74				2.0	2.0	
PHEASANT MEADOWS	LT	10+82.61	10+85.29				3.0	3.0	
PHEASANT MEADOWS	RT	10+62.41	10+65.65				5.0	5.0	
PHEASANT MEADOWS	RT	10+74.74	10+76.64				2.0	2.0	
TOTAL				1021	938.9	23		426	101

SIDEWALKS						
LOCATION				CONCRETE SIDEWALK 4 INCH (SQ YD)	FULL DEPTH SAW CUT (FT)	CONCRETE CURB RAMP # (SQ YD)
ROAD	SIDE	STATION	STATION			
WATERFORD	LT	8+73.03	9+52.68	44.46	24.0	3.84
WATERFORD	RT	9+31.87	9+57.81	0.00	0.0	38.56
PHEASANT MEADOWS	LT	10+60.75	10+86.60	5.57	50.0	8.56
PHEASANT MEADOWS	RT	10+66.03	10+97.10	17.78	43.0	26.44
PAY TOTAL				67.8		77.4

INTEGRAL CURB TYPE A INCLUDED IN RAMP SQ YD

BOX CULVERT EXTENSION						
LOCATION			CLASS 4 EXCAVATION (CU YD)	PARTIAL REMOVAL OF CULVERT- BRIDGE CONCRETE (L SUM)	CLASS B-1 CONCRETE (CULVERTS-BRIDGE) (CU YD)	REINFORCING STEEL (CULVERTS-BRIDGE) (POUND)
ROAD	SIDE	STATION				
WATERFORD	RT	9+19.89	28	1	19.5	4010
TOTAL			28.0	1	19.5	4010

DRAINAGE							
STRUCTURE NUMBER	LOCATION			18" CLASS III PIPE (LIN FT)	CURB INLET (EACH)	ADJUSTING BASIN OR INLET (EACH)	ROCK LINING 2.5' THICK (CU YD)
	ROAD	SIDE	STATION				
	WATERFORD	LT	8+94.45			1	
CI 1-1	WATERFORD	RT	8+94.58	21	1		40
TOTAL				21	1	1	40

EROSION CONTROL							
LOCATION				SILT FENCE (LIN FT)	CURB INLET CHECK (EACH)	TYPE C BERM (LIN FT)	SEDIMENT REMOVAL (CU YD)
SIDE	SIDE	STATION	STATION				
WATERFORD	LT	8+73.00	9+50.00	91	1		2
WATERFORD	RT	5+27.00	9+60.00	454	1	30	6
PHEASANT MEADOWS	LT	10+57.00	11+00.00		1		1
PHEASANT MEADOWS	RT	10+62.00	11+15.00		1		1
TOTAL				545	4	30	10

TEMPORARY TRAFFIC CONTROL		
ITEM		UNIT
CONSTRUCTION SIGNS		SQ FT
FLEXIBLE NON-METALLIC CHANNELIZER (TRIM-LINE)		EA
PAVEMENT EDGE TREATMENT		LIN. FT
ADVANCED WARNING RAIL SYSTEM		EA
FLAG ASSEMBLY		EA
FLASHING ARROW PANEL		EA

SODDING				
LOCATION				TURF TYPE TALL FESCUE SODDING (SQ YD)
ROAD	SIDE	STATION	STATION	
WATERFORD	LT	8+61.00	9+55.00	122
WATERFORD	RT	5+27.00	9+59.00	1297
PHEASANT MEADOWS	LT	10+54.00	10+93.00	62
PHEASANT MEADOWS	RT	10+57.00	10+95.00	33
TOTAL				1515

MISCELLANEOUS SCHEDULE								
TOTAL	CLEARING AND GRUBBING	MOBILIZATION	CONTRACTOR FURNISHED SURVEYING & STAKING	REMOVE AND REPLACE MONUMENT	RELOCATED POLE	REMOVAL OF IMPROVEMENTS	RELOCATED BIKE SIGN	REMOVE AND REPLACE WIRELESS ACCESS POINT OR REPEATER
	(ACRE)	(L SUM)	(L SUM)	(L SUM)	(EACH)	(L SUM)	(L SUM)	(EACH)
	1	1	1	1	1	1	1	1
	1	1	1	1	1*	1	1**	1

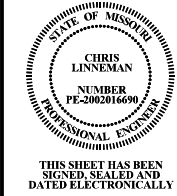
* STA. 6+26, RT.

** STA. 9+03, RT.

1

PAVEMENT MARKING SCHEDULE												
LOCATION			ACRYLIC COPOLYMER FAST DRY PAVEMENT MARKING PAINT 4" WHITE	HIGH BUILD WATERBORNE PAVEMENT MARKING PAINT, TYPE I BEADS 12" WHITE	WATERBORNE PAVEMENT MARKING PAINT, TYPE P BEADS 24" WHITE	ACRYLIC COPOLYMER FAST DRY PAVEMENT MARKING PAINT 4" YELLOW	TYPE 2 PREFORMED MARKING TAPE (GROOVED) STRAIGHT- LEFT/RIGHT ARROW	TYPE 2 PREFORMED MARKING TAPE (GROOVED) LEFT/RIGHT ARROW	ACRYLIC WATERBORNE PAVEMENT BIKE SYMBOL	TYPE 2 PREFORMED MARKING TAPE (GROOVED) STRAIGHT ARROW	PAVEMENT MARKING REMOVAL	PAVEMENT MARKING REMOVAL (SYMBOLS)
ROAD	STATION	STATION	(LIN FT)	(LIN FT)	(LIN FT)	(LIN FT)	(EACH)	(EACH)	(EACH)	(EACH)	(LIN FT)	(EACH)
WATERFORD-PHEASANT MEADOWS	5+66	11+30	1050	365	190	440	3	7	12	5	1240	8
TOTAL			1050	365	190	440	3	7	12	5	1280	8

QUANTITIES
SHEET 1 OF 1



DATE PREPARED
5/3/2016

SHEET NO. 3 TOTAL SHEETS 28

FEDERAL PROJECT NO.
CMAQ 7302(649)

COUNTY
ST. CHARLES

JOB NO.

CONTRACT ID.

PROJECT NO.

BRIDGE NO.

DATE	DESCRIPTION				

Waterford Crossing
City of O'Fallon
100 North Main Street
O'Fallon, Missouri 63366



EFK Moen, LLC
Civil Engineering Design
13523 Barrett Parkway Dr
Suite 250
St. Louis, MO 63021
Phone 314-394-3100
Fax 314-394-3199
Missouri Certificate of Authority: 001578

Project: Waterford Crossing Drive and Highway K Intersection Improvements - City of O'Fallon
CMAQ 7302(649)
ITEMIZED BID FORM

Line Item	Description	Unit	Quantity	Unit Price	Extended Price
ROADWAY					
1	CLEARING AND GRUBBING	ACRE	1		
2	REMOVAL OF IMPROVEMENTS	L.S.	1		
3	CLASS 4 EXCAVATION	C.Y.	28		
4	LINEAR GRADING CLASS 1	STA.	4.3		
5	PARTIAL REMOVAL OF CULVERT-BRIDGE CONCRETE	L.S.	1		
6	TYPE 5 AGGREGATE FOR BASE (4 IN. THICK)	S.Y.	1021		
7	GRAVEL (A) OR CRUSHED STONE (B)	S.Y.	23		
8	CONCRETE PAVEMENT (8 IN. NON-REINF)	S.Y.	938.9		
9	ADJUSTING BASIN OR INLET	EACH	1		
10	INTEGRAL CURB (6 IN. HEIGHT AND UNDER) TYPE A	L.F.	426		
11	INTEGRAL CURB TYPE M	L.F.	101		
12	ROCK LINING	C.Y.	40		
13	CURB INLET	EACH	1		
14	CONSTRUCTION SIGNS	S.F.	168		
15	ADVANCED WARNING RAIL SYSTEM	EACH	3		
16	FLAG ASSEMBLY	EACH	9		
17	CHANNELIZER (DRUM-LIKE)	EACH	100		
18	FLASHING ARROW PANEL	EACH	2		
19	MOBILIZATION	L.S.	1		
20	PAVEMENT EDGE TREATMENT	L.F.	536		
21	CONTRACTOR FURNISHED SURVEYING AND STAKING	L.S.	1		
22	CLASS B-1 CONCRETE (CULVERTS-BRIDGE)	C.Y.	19.5		

Addendum #1 – 05/03/2016

23	REINFORCING STEEL (CULVERTS-BRIDGE)	LBS	4010		
24	MODULAR BLOCK RETAINING WALL	S.F.	341		
25	18 IN. PIPE GROUP A	L.F.	21		
26	CURB INLET CHECK	EACH	4		
27	SEDIMENT REMOVAL	C.Y.	10		
28	SILT FENCE	L.F.	545		
29	TYPE C BERM	L.F.	30		
ROADWAY SUBTOTAL:					
SIGNALS, LIGHTING, SIGNING AND STRIPING ITEMS					
30	TYPE 2 PREFORMED MARKING TAPE (GROOVED) LEFT/RIGHT ARROW	EACH	7		
31	TYPE 2 PREFORMED MARKING TAPE (GROOVED) STRAIGHT ARROW	EACH	5		
32	TYPE 2 PREFORMED MARKING TAPE (GROOVED) COMBINATION STRAIGHT-LEFT/RIGHT ARROW	EACH	3		
33	12 IN WHITE HIGH BUILD WATERBORNE PAVEMENT MARKING PAINT, TYPE 1 BEADS	L.F.	365		
34	24 IN. WHITE WATERBORNE PAVMENT MARKING PAINT TYPE P BEADS	L.F.	190		
35	4 IN. WHITE ACRYLIC COPOLYMER FAST DRY PAVEMENT MARKING PAINT	L.F.	1050		
36	4 IN. YELLOW ACRYLIC COPOLYMER FAST DRY PAVEMENT MARKING PAINT	L.F.	440		
37	PAVEMENT MARKING REMOVAL	L.F.	1280		
38	PAVEMENT MARKING REMOVAL (SYMBOLS)	EACH	8		
39	ACRYLIC WATERBORNE PAVEMENT BIKE SYMBOL	EACH	12		
40	RELOCATED POLE	EACH	1		
41	LUMINAIRE, 150 WATT HIGH PRESSURE SODIUM	EACH	2		
42	PULL BOX, PREFORMED CLASS 2	EACH	1		
43	PULL BOX, PREFORMED CLASS 3	EACH	1		
44	SIGNAL HEAD, TYPE 1T	EACH	4		

Addendum #1 – 05/03/2016

45	SIGNAL HEAD, TYPE 1S	EACH	2		
46	SIGNAL HEAD, TYPE 3B	EACH	6		
47	SIGNAL HEAD, TYPE 4B	EACH	2		
48	POST, SIGNAL 8 FT. OR 2.4 M	EACH	3		
49	POST, TYPE CL, 45 FT. ARM OR 13.7 M ARM	EACH	2		
50	POST, TYPE CL, 50 FT. ARM OR 15.2 M ARM	EACH	2		
51	DETECTOR, PUSHBUTTON	EACH	6		
52	CONDUIT, 1 IN., LOOP DETECTOR	L.F.	221		
53	CONDUIT, 3 IN. TRENCH	L.F.	158		
54	CABLE, 10 AWG 1 CONDUCTOR, POLE AND BRACKET	L.F.	180		
55	CABLE, 12 AWG 2 CONDUCTOR	L.F.	210		
56	CABLE, 16 AWG 2 CONDUCTOR	L.F.	880		
57	CABLE, 16 AWG 5 CONDUCTOR	L.F.	890		
58	CABLE, 16 AWG 7 CONDUCTOR	L.F.	710		
59	CABLE, LOOP DETECTOR, IN DUCT	L.F.	1660		
60	CABLE LOOP DETECTOR, LEAD-IN	L.F.	1640		
61	BASE, CONCRETE	C.Y.	7.9		
62	SIGNAL SIGN, TYPE SHR2I-1	S.F.	14		
63	RELOCATED BIKE SIGN	L.S.	1		
64	REMOVE AND REPLACE WIRELESS ACCESS POINT OR REPEATER	EACH	1		
SIGNALS, LIGHTING, SIGNING AND STRIPING SUBTOTAL:					
LANDSCAPING/STREETSCAPING ITEMS					
65	TURF TYPE TALL FESCUE SODDING	S.Y.	1515		
66	REMOVE AND REPLACE MONUMENT	L.S.	1		
LANDSCAPING/STREETSCAPING SUBTOTAL:					
BICYCLE AND PEDESTRIAN ITEMS					
67	PEDESTRIAN FENCE	L.F.	67		
68	CONCRETE CURB RAMP	S.Y.	77.4		
69	CONCRETE SIDEWALK, 4 IN.	S.Y.	67.8		
BICYCLE AND PEDESTRIAN SUBTOTAL:					

TOTAL BASE BID:	
-----------------	--

Grand Total (as written):

Signature Required Below

CONTRACTOR SIGNATURE: _____ **DATE:** _____ **CORPORATE SEAL (AFFIX)**

Route K @ Waterford Crossing



Location of wireless access point for SENSYS

