



October 15, 2019

RE: Page Avenue and Ferguson Avenue Intersection Improvements
City of Pagedale, MO
Addendum #1

To All Prospective Bidders,

This Addendum, consisting of 4 pages, is issued to correct the original documents as noted below, and is hereby made a part of the contract documents.

1. Revised signal head and mast arm pay items and quantities on the Bid Form and on page 7 of 55 to match tabulation on sheet 43 of 55.
2. Revise Note 1 on page 40 of 55 to read "The City of Pagedale"
3. Changed the location of signal head "82" from a mast arm mount to a post mount to match tabulation on sheet 43 of 55.

Prime contractors must include the enclosed revised Bid Form in their bidding proposal. If a contractor has already submitted their proposal, the contractor shall have the option to submit a revised complete proposal package or submit just the revised Bid Form which shall be incorporated into their original submittal. All revised submittals shall be submitted by the deadline listed in the original proposal. All original Bid Forms shall be void and any bids submitted without the revised Bid Form will not be accepted.

Thank You,

Lochmueller Group

A handwritten signature in blue ink, appearing to read "Lorne W. Jackson".

Lorne Jackson, PE
Project Manager

Attachments

PAGE AVENUE AND FERGUSON AVENUE INTERSECTION IMPROVEMENTS
BID FORM

Route: Page Avenue (Route 180) County: St. Louis Agency: City of Pagedale
Project No.: STP-5402 (613)

CONTRACTOR NAME _____

- ***FOR COMPLETE INFORMATION COVERING THESE ITEMS, REFERENCE PLANS & SPECIFICATIONS.***

The undersigned Bidder acknowledges receipt of the following addenda listed by number and date appearing on each addendum:

Addendum Number & Date Received:

Addendum #1 - Issued 10-15-19

ITEMIZED BID FORM

(PAGE 1 OF 4)

SPECIFIC ROADWAY ITEMS					
ITEM NUMBER	DESCRIPTION	QUANTITY	UNIT	UNIT PRICE	EXTENDED PRICE
2022010	REMOVAL OF IMPROVEMENTS	1	LS		
3040504	TYPE 5 AGGREGATE FOR BASE (4 IN. THICK)	1018	SY		
4030109	ASPHALTIC CONCRETE MIXTURE PG 70-22 (SP125CLP MIX)	709	TONS		
4071005	TACK COAT	493.92	GAL		
5024008	CONCRETE BASE (8 IN. NON-REINF)	48	SY		
604-13.01	SINGLE CURB INLET, TRAPPED	1	EA		
604-13.02	DOUBLE CURB INLET, TRAPPED	1	EA		
604-20.23	REBUILD MANHOLE	1	EA		
604-20.30	ADJUSTING MANHOLE	5	EA		
604-99.01	MANHOLE (SPECIAL), 72"	1	EA		
6083006	6 IN. CONCRETE MEDIAN STRIP	17.6	SY		
6085008	PAVED APPROACH, 8 IN.	181	SY		
6091010	CONCRETE CURB (6 IN. HEIGHT AND UNDER) TYPE S	1258	LF		
6092011	INTEGRAL CURB (6 IN. HEIGHT AND UNDER) TYPE A	52	LF		
611-20.95	GROUT FOR ABANDONED SEWERS	2	CY		
6169901	TRAFFIC CONTROL	1	LS		
6181000	MOBILIZATION	1	LS		
6221001	COLDMILLING BITUMINOUS PAVEMENT FOR REMOVAL OF SURFACING (3 IN. THICK OR LESS)	6174	SY		
6274000	CONTRACTOR FURNISHED SURVEYING AND STAKING	1	LS		
726-23.12	12" CLASS III REINFORCED CONCRETE PIPE CULVERT (GASKET TYPE)	37	LF		
726-23.18	18" CLASS III REINFORCED CONCRETE PIPE CULVERT (GASKET TYPE)	8	LF		
8061007A	CURB INLET CHECK	3	EA		
8061019	SILT FENCE	427	LF		
SPECIFIC LANDSCAPING ITEMS					
ITEM NUMBER	DESCRIPTION	QUANTITY	UNIT	UNIT PRICE	EXTENDED PRICE
603-99.90	IRRIGATION SYSTEM	2320	SY		
6089905A	EXPOSED AGGREGATE CONCRETE SIDEWALK	65	SY		
803-10.00	SODDING	1248	SY		
8041000	TOPSOIL	529	CY		
8049907A	PLANTING SOIL MIXTURE	158	CY		
808-90.54	AMELANCHIER X GRANDIFLORA (MULTI-TRUNK) 10' HT.	3	EA		
808-90.55	CERCIS CANADENSIS 'FOREST PANSY' (SINGLE TRUNK) 12' HT.	3	EA		
808-90.56	CERCIS CANADENSIS 'FOREST PANSY' (MULTI-TRUNK) 12' HT.	6	EA		

ITEMIZED BID FORM

(PAGE 2 OF 4)

SPECIFIC LANDSCAPING ITEMS					
ITEM NUMBER	DESCRIPTION	QUANTITY	UNIT	UNIT PRICE	EXTENDED PRICE
808-90.57	SYRINGA RETICULATA 'IVORY SILK' 10' HT.	3	EA		
8089907	COMPOST MULCH	40	CY		
820-90.23	VIBURNUM X RHYTIDOPHYLLOIDES 'ALLEGHANY'	20	EA		
820-90.46	ROSA 'RADRAZZ' KNOCK OUT	37	EA		
820-90.47	ILEX VERTICILLATA 'NANA' RED SPRITE	37	EA		
820-90.48	ILEX VERTICILLATA 'JIM DANDY'	8	EA		
840-90.06	NARCISSUS 'KING ALFRED'	1260	EA		
840-90.07	HEMEROCALLIS X 'STELLA DE ORO'	118	EA		
840-90.38	LIRIOPE MUSCARI	700	EA		
820-90.49	JUNIPERUS SABINA 'ARCADIA'	67	EA		
840-90.64	PEROVSKIA ATRIPLICIFOLIA 'LITTLE SPIRE'	184	EA		
840-90.65	VERBENA PERUVIANA 'AZTEC WILD ROSE'	180	EA		
SPECIFIC BICYCLE / PEDESTRIAN ITEMS					
ITEM NUMBER	DESCRIPTION	QUANTITY	UNIT	UNIT PRICE	EXTENDED PRICE
6081010	CONCRETE CURB RAMP	55	SY		
6081012	TRUNCATED DOMES	74	SF		
6086004	CONCRETE SIDEWALK, 4 IN.	647	SY		
6209902B	PREFORMED THERMOPLASTIC PAVEMENT MARKING, BIKE LANE SYMBOL W/ STRAIGHT ARROW	3	EA		
6209902C	PREFORMED THERMOPLASTIC PAVEMENT MARKING, SHARED LANE SYMBOL	5	EA		
SPECIFIC SIGNALS / LIGHTING /SIGNING / STRIPING ITEMS					
ITEM NUMBER	DESCRIPTION	QUANTITY	UNIT	UNIT PRICE	EXTENDED PRICE
6205901A	4 IN. YELLOW HIGH BUILD WATERBORNE PAVEMENT MARKING PAINT, TYPE L BEADS	1600	LF		
6205902A	6 IN. WHITE HIGH BUILD WATERBORNE PAVEMENT MARKING PAINT, TYPE L BEADS	1720	LF		
6206124A	24 IN. WHITE WATERBORNE PAVEMENT MARKING PAINT, TYPE P BEADS	370	LF		
6209902A	PREFORMED THERMOPLASTIC PAVEMENT MARKING, LEFT/RIGHT ARROW	11	EA		
9011115	BRACKET ARM, 15 FT.	4	EA		
9011311	LUMINAIRE, LED-A	4	EA		
9012230	BASE MOUNTED CONTROL STATION 240 VOLT - 4 CIRCUIT	1	EA		
9013002	CONDUIT, 2 IN. RIGID, IN TRENCH	18	LF		
9013004	CONDUIT, 4 IN. RIGID, IN TRENCH	19	LF		
9014004	CONDUIT, 4 IN. RIGID, PUSHED	201	LF		
9016110	PULL BOX, PREFORMED CLASS 1	3	EA		
9017110	CABLE, 10 AWG 1 CONDUCTOR, POLE AND BRACKET	504	LF		

ITEMIZED BID FORM

(PAGE 3 OF 4)

SPECIFIC SIGNALS / LIGHTING /SIGNING / STRIPING ITEMS (CONTINUED)					
ITEM NUMBER	DESCRIPTION	QUANTITY	UNIT	UNIT PRICE	EXTENDED PRICE
9017407	CABLE-CONDUIT, 1 IN., 2 CONDUCTORS AND 1 BARE NEUTRAL, 8 AWG	1930	LF		
9018612	POWER SUPPLY ASSEMBLY, TYPE 2, 240/120 VOLT SERVICE, LIGHTING ONLY	1	EA		
9019902A	REMOVE EXISTING LIGHT POLE FOUNDATION	1	EA		
9019902C	POLE FOUNDATION (12 FT. MOUNTING HEIGHT)	21	EA		
9019902D	LIGHT POLE ASSEMBLY	21	EA		
9020213	SIGNAL HEAD, TYPE 3S	3	EA		
9020513	SIGNAL HEAD, TYPE 3B	5	EA		
9020514	SIGNAL HEAD, TYPE 4B	4	EA		
9020811	SIGNAL HEAD, TYPE 1S, PEDESTRIAN	6	EA		
9022708	POST, SIGNAL 8 FT.	4	EA		
9023130	POST, TYPE CL, 30 FT. ARM	1	EA		
9023135	POST, TYPE CL, 35 FT. ARM	2	EA		
9023145	POST, TYPE CL, 45 FT. ARM	1	EA		
9024283	CONTROLLER ASSEMBLY HOUSING, NEMA TS2 CONTROLLER	1	EA		
9024920	DETECTOR, PUSH BUTTON	6	EA		
9024975	VIDEO DETECTION SYSTEM	1	EA		
9025200	CONDUIT, 2 IN., TRENCH	45	LF		
9025300	CONDUIT, 3 IN. TRENCH	317	LF		
9027300	CONDUIT, 3 IN. PUSHED	332	LF		
9028100	CABLE, 10 AWG 1 CONDUCTOR, POLE AND BRACKET	380	LF		
9028208	CABLE, 8 AWG 1 CONDUCTOR, POWER	120	LF		
9028302	CABLE, 12 AWG 2 CONDUCTOR	850	LF		
9028308	CABLE, 16 AWG 2 CONDUCTOR	1440	LF		
9028310	CABLE, 16 AWG 5 CONDUCTOR	1550	LF		
9028311	CABLE, 16 AWG 7 CONDUCTOR	3070	LF		
9028611	POWER SUPPLY ASSEMBLY, TYPE 1 WITH 120V LIGHTING CONTROL CABINET	1	EA		
9028811	PULL BOX, PREFORMED CLASS 2	3	EA		
9028812	PULL BOX, PREFORMED CLASS 3	1	EA		
9029100	BASE, CONCRETE	12	CY		
9029902A	NETWORK CONNECTED SIGNAL MONITOR	1	EA		
9029902B	RELOCATE EXISTING COMMUNICATION EQUIPMENT	1	EA		
9031270A	2 IN. PSST POST - 12 GA.	13	LF		
9035004A	SH-FLAT SHEET	87	SF		
9039902A	REMOVE AND RELOCATE GROUND MOUNT SIGN	6	EA		

SUMMARY OF QUANTITIES

ITEM NUMBER	DESCRIPTION	UNIT	QUANTITY
2022010	REMOVAL OF IMPROVEMENTS	LS	1
3040504	TYPE 5 AGGREGATE FOR BASE (4 IN. THICK)	SY	1018
4030109	ASPHALTIC CONCRETE MIXTURE PG 70-22 (SP125CLP MIX)	TONS	709
4071005	TACK COAT	GAL	494
5024006	CONCRETE BASE (8 IN. NON-REINF)	SY	48
* 603-99-90	IRRIGATION SYSTEM	SY	2320
* 604-13-01	SINGLE CURB INLET, TRAPPED	EA	1
* 604-13-02	DOUBLE CURB INLET, TRAPPED	EA	1
* 604-20-23	REBUILD MANHOLE	EA	1
* 604-20-30	ADJUSTING MANHOLE	EA	5
* 604-99-01	MANHOLE (SPECIAL), 72"	EA	1
6081010	CONCRETE CURB RAMP	SY	55
6081012	TRUNCATED DOMES	SF	74
6083006	6 IN. CONCRETE MEDIAN STRIP	SY	18
6085008	PAVED APPROACH, 8 IN.	SY	181
6086004	CONCRETE SIDEWALK, 4 IN.	SY	647
6089005A	EXPOSED AGGREGATE CONCRETE SIDEWALK	SY	65
6091010	CONCRETE CURB (6 IN. HEIGHT AND UNDER) TYPE S	LF	1258
6092011	INTEGRAL CURB (6 IN. HEIGHT AND UNDER) TYPE A	LF	52
* 611-20-95	GROUT FOR ABANDONED SEWERS	CY	2
6169901	TRAFFIC CONTROL	LS	1
6181000	MOBILIZATION	LS	1
6205901A	4 IN. YELLOW HIGH BUILD WATERBORNE PAVEMENT MARKING PAINT, TYPE L BEADS	LF	1600
6205902A	6 IN. WHITE HIGH BUILD WATERBORNE PAVEMENT MARKING PAINT, TYPE L BEADS	LF	1720
6206124A	24 IN. WHITE WATERBORNE PAVEMENT MARKING PAINT, TYPE P BEADS	LF	370
6209902A	PREFORMED THERMOPLASTIC PAVEMENT MARKING, LEFT/RIGHT ARROW	EA	11
6209902B	PREFORMED THERMOPLASTIC PAVEMENT MARKING, BIKE LANE SYMBOL W/ STRAIGHT ARROW	EA	3
6209902C	PREFORMED THERMOPLASTIC PAVEMENT MARKING, SHARED LANE SYMBOL	EA	5
6221001	COLDMLING BITUMINOUS PAVEMENT FOR REMOVAL OF SURFACING (3 IN. THICK OR LESS)	SY	6174
6274000	CONTRACTOR FURNISHED SURVEYING AND STAKING	LS	1
* 726-23-12	12" CLASS III REINFORCED CONCRETE PIPE CULVERT (GASKET TYPE)	LF	37
* 726-23-18	18" CLASS III REINFORCED CONCRETE PIPE CULVERT (GASKET TYPE)	LF	8
* 803-10-00	SODDING	SY	1248
8041000	TOPSOIL	CY	529
8049907A	PLANTING SOIL MIXTURE	CY	158
8061007A	CURB INLET CHECK	EA	3
8061019	SILT FENCE	LF	427
* 808-90-54	AMELANCHIER X GRANDIFLORA (MULTI-TRUNK) 10' HT.	EA	3
* 808-90-55	CERCIS CANADENSIS 'FOREST PANSY' (SINGLE TRUNK) 12' HT.	EA	3
* 808-90-56	CERCIS CANADENSIS 'FOREST PANSY' (MULTI-TRUNK) 12' HT.	EA	6
* 808-90-57	SYRINGA RETICULATA 'IVORY SILK' 10' HT.	EA	3
8089907	COMPOST MULCH	CY	40
* 820-90-23	VIBURNUM X RHYTIDOPHYLLOIDES 'ALLEGHANY'	EA	20
* 820-90-46	ROSA 'RADRAZZ' KNOCK OUT	EA	37
* 820-90-47	ILEX VERTICILLATA 'NANA' RED SPRITE	EA	37
* 820-90-48	ILEX VERTICILLATA 'JIM DANDY'	EA	8
* 840-90-06	NARCISSUS 'KING ALFRED'	EA	1260
* 840-90-07	HEMEROCALLIS X 'STELLA DE ORO'	EA	118
* 840-90-38	LIRIOPE MUSCARI	EA	700
* 820-90-49	JUNIPERUS SABINA 'ARCADIA'	EA	67
* 840-90-64	PEROVSKIA ATRIPLICIFOLIA LITTLE SPIRE'	EA	184
* 840-90-65	VERBENA PERUVIANA 'AZTEC WILD ROSE'	EA	180

ITEM NUMBER	DESCRIPTION	UNIT	QUANTITY
9011115	BRACKET ARM, 15 FT.	EA	4
9011311	LUMINAIRE, LED-A	EA	4
9012230	BASE MOUNTED CONTROL STATION 240 VOLT - 4 CIRCUIT	EA	1
9013002	CONDUIT, 2 IN. RIGID, IN TRENCH	LF	16
9013004	CONDUIT, 4 IN. RIGID, IN TRENCH	LF	19
9014004	CONDUIT, 4 IN. RIGID, PUSHED	LF	201
9016110	PULL BOX, PREFORMED CLASS 1	EA	3
9017110	CABLE, 10 AWG 1 CONDUCTOR, POLE AND BRACKET	LF	504
9017407	CABLE-CONDUIT, 1 IN., 2 CONDUCTORS AND 1 BARE NEUTRAL, 8 AWG	LF	1930
9018612	POWER SUPPLY ASSEMBLY, TYPE 2, 240/120 VOLT SERVICE, LIGHTING ONLY	EA	1
9019902A	REMOVE EXISTING LIGHT POLE FOUNDATION	EA	1
9019902C	POLE FOUNDATION (12 FT. MOUNTING HEIGHT)	EA	21
9019902D	LIGHT POLE ASSEMBLY	EA	21
9020213	SIGNAL HEAD, TYPE 3S	EA	3
9020513	SIGNAL HEAD, TYPE 3B	EA	5
9020514	SIGNAL HEAD, TYPE 4B	EA	4
9020811	SIGNAL HEAD, TYPE 1S, PEDESTRIAN	EA	6
9022708	POST, SIGNAL 9 FT.	EA	4
9023130	POST, TYPE CL, 30 FT. ARM	EA	1
9023135	POST, TYPE CL, 35 FT. ARM	EA	2
9023145	POST, TYPE CL, 45 FT. ARM	EA	1
9024283	CONTROLLER ASSEMBLY HOUSING, NEMA TS2 CONTROLLER	EA	1
9024920	DETECTOR, PUSH BUTTON	EA	6
9024975	VIDEO DETECTION SYSTEM	EA	1
9025200	CONDUIT, 2 IN., TRENCH	LF	45
9025300	CONDUIT, 3 IN. TRENCH	LF	317
9027300	CONDUIT, 3 IN. PUSHED	LF	332
9028100	CABLE, 10 AWG 1 CONDUCTOR, POLE AND BRACKET	LF	380
9028208	CABLE, 8 AWG 1 CONDUCTOR, POWER	LF	120
9028302	CABLE, 12 AWG 2 CONDUCTOR	LF	850
9028308	CABLE, 16 AWG 2 CONDUCTOR	LF	1440
9028310	CABLE, 16 AWG 5 CONDUCTOR	LF	1550
9028311	CABLE, 16 AWG 7 CONDUCTOR	LF	3070
9028611	POWER SUPPLY ASSEMBLY, TYPE 1 WITH 120V LIGHTING CONTROL CABINET	EA	1
9028811	PULL BOX, PREFORMED CLASS 2	EA	3
9028812	PULL BOX, PREFORMED CLASS 3	EA	1
9029100	BASE, CONCRETE	CY	12.0
9029902A	NETWORK CONNECTED SIGNAL MONITOR	EA	1
9029902B	RELOCATE EXISTING COMMUNICATION EQUIPMENT	EA	1
9031270A	2 IN. PSST POST - 12 GA.	LF	13
9035004A	SH-FLAT SHEET	SF	87
9039902A	REMOVE AND RELOCATE GROUND MOUNT SIGN	EA	6
9109902A	FIBER OPTIC PGTAIL, SM, FURNISH AND INSTALL	EA	4
9109902B	FIBER OPTIC JUMPER, SM, FURNISH AND INSTALL	EA	4
9109902C	FIBER OPTIC SPLICE	EA	26
9109902D	WALL-MOUNTED INTERCONNECT CENTER, FURNISH AND INSTALL	EA	1

* DENOTES A ST. LOUIS COUNTY DEPARTMENT OF TRANSPORTATION BID ITEM NUMBER



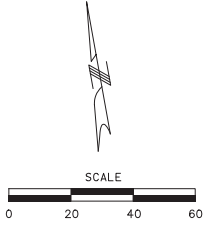
DISCLAIMER OF RESPONSIBILITY
 I hereby specify that the documents intended to be authorized by my seal are limited to this sheet, and I hereby disclaim any responsibility for all other drawings, specifications, estimates, reports or other documents or instruments relating to or intended to be used for any part of the engineering project or survey.

REV	DATE	BY	DESCRIPTION

LOCHMUELLER GROUP
 411 N. 10TH STREET, SUITE 200
 SAINT LOUIS, MISSOURI 63101
 P (314) 461-5288
 WWW.LOCHMUELLER.COM
 MISSOURI STATE ENGINEERING CORPORATION
 CERTIFICATE/LICENSE NO. 2002011852

PAGE AVE. AND FERGUSON AVE
 INTERSECTION IMPROVEMENTS
 SUMMARY OF QUANTITIES
 (SHEET 1 OF 4)

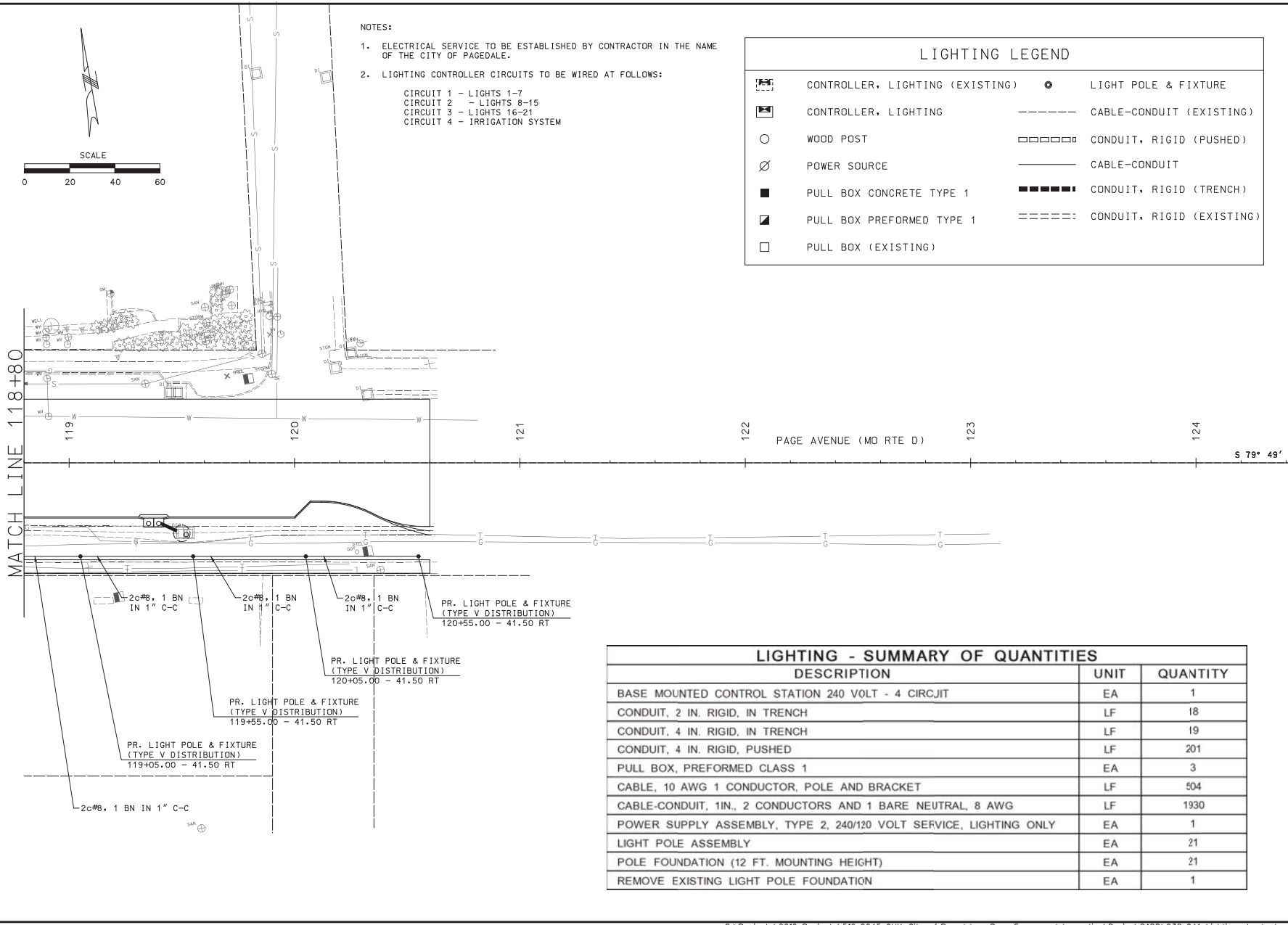
PROJECT/JOB NO.
 STP-5402(613)
 MSD PROJECT NO.
 18MSD-00118
 MSD BASE MAP
 17J2
 DATE PREPARED
 10/15/2019
 SHEET
 OF 55



NOTES:

- ELECTRICAL SERVICE TO BE ESTABLISHED BY CONTRACTOR IN THE NAME OF THE CITY OF PAGEDALE.
- LIGHTING CONTROLLER CIRCUITS TO BE WIRED AS FOLLOWS:
 CIRCUIT 1 - LIGHTS 1-7
 CIRCUIT 2 - LIGHTS 8-15
 CIRCUIT 3 - LIGHTS 16-21
 CIRCUIT 4 - IRRIGATION SYSTEM

LIGHTING LEGEND			
	CONTROLLER, LIGHTING (EXISTING)		LIGHT POLE & FIXTURE
	CONTROLLER, LIGHTING		CABLE-CONDUIT (EXISTING)
	WOOD POST		CONDUIT, RIGID (PUSHED)
	POWER SOURCE		CABLE-CONDUIT
	PULL BOX CONCRETE TYPE 1		CONDUIT, RIGID (TRENCH)
	PULL BOX PREFORMED TYPE 1		CONDUIT, RIGID (EXISTING)
	PULL BOX (EXISTING)		



LIGHTING - SUMMARY OF QUANTITIES		
DESCRIPTION	UNIT	QUANTITY
BASE MOUNTED CONTROL STATION 240 VOLT - 4 CIRCUIT	EA	1
CONDUIT, 2 IN. RIGID, IN TRENCH	LF	18
CONDUIT, 4 IN. RIGID, IN TRENCH	LF	19
CONDUIT, 4 IN. RIGID, PUSHED	LF	201
PULL BOX, PREFORMED CLASS 1	EA	3
CABLE, 10 AWG 1 CONDUCTOR, POLE AND BRACKET	LF	504
CABLE-CONDUIT, 1IN., 2 CONDUCTORS AND 1 BARE NEUTRAL, 8 AWG	LF	1930
POWER SUPPLY ASSEMBLY, TYPE 2, 240/120 VOLT SERVICE, LIGHTING ONLY	EA	1
LIGHT POLE ASSEMBLY	EA	21
POLE FOUNDATION (12 FT. MOUNTING HEIGHT)	EA	21
REMOVE EXISTING LIGHT POLE FOUNDATION	EA	1

DISCLAIMER OF RESPONSIBILITY
 I hereby specify that the documents intended to be authorized by my seal are limited to this sheet, and I hereby disclaim any responsibility for all other drawings, specifications, estimates, reports or other documents or instruments relating to or intended to be used for any part of the engineering project or survey.

REV	DATE	BY	DESCRIPTION

411 N. 10TH STREET, SUITE 200
 SAINT LOUIS, MISSOURI 63101
 P (314) 551-5288
 WWW.LOCHMULLER.COM
 MISSOURI STATE ENGINEERING CORPORATION
 CERTIFICATE/LICENSE NO. 2002011852

PAGE AVE. AND FERGUSON AVE INTERSECTION IMPROVEMENTS

LIGHTING PLAN (SHEET 3 OF 3)

PROJECT/JOB NO. STP-5402(613)
MSD PROJECT NO. 18MSD-00118
MSD BASE MAP 17J2
DATE PREPARED 10/15/2019
SHEET 40 OF 55



DISCLAIMER OF RESPONSIBILITY
 I hereby specify that the documents intended to be authorized by my seal are limited to this sheet, and I hereby disclaim any responsibility for all other drawings. Specifications, estimates, reports or instruments relating to this project shall be used for any part of the engineering project or survey.

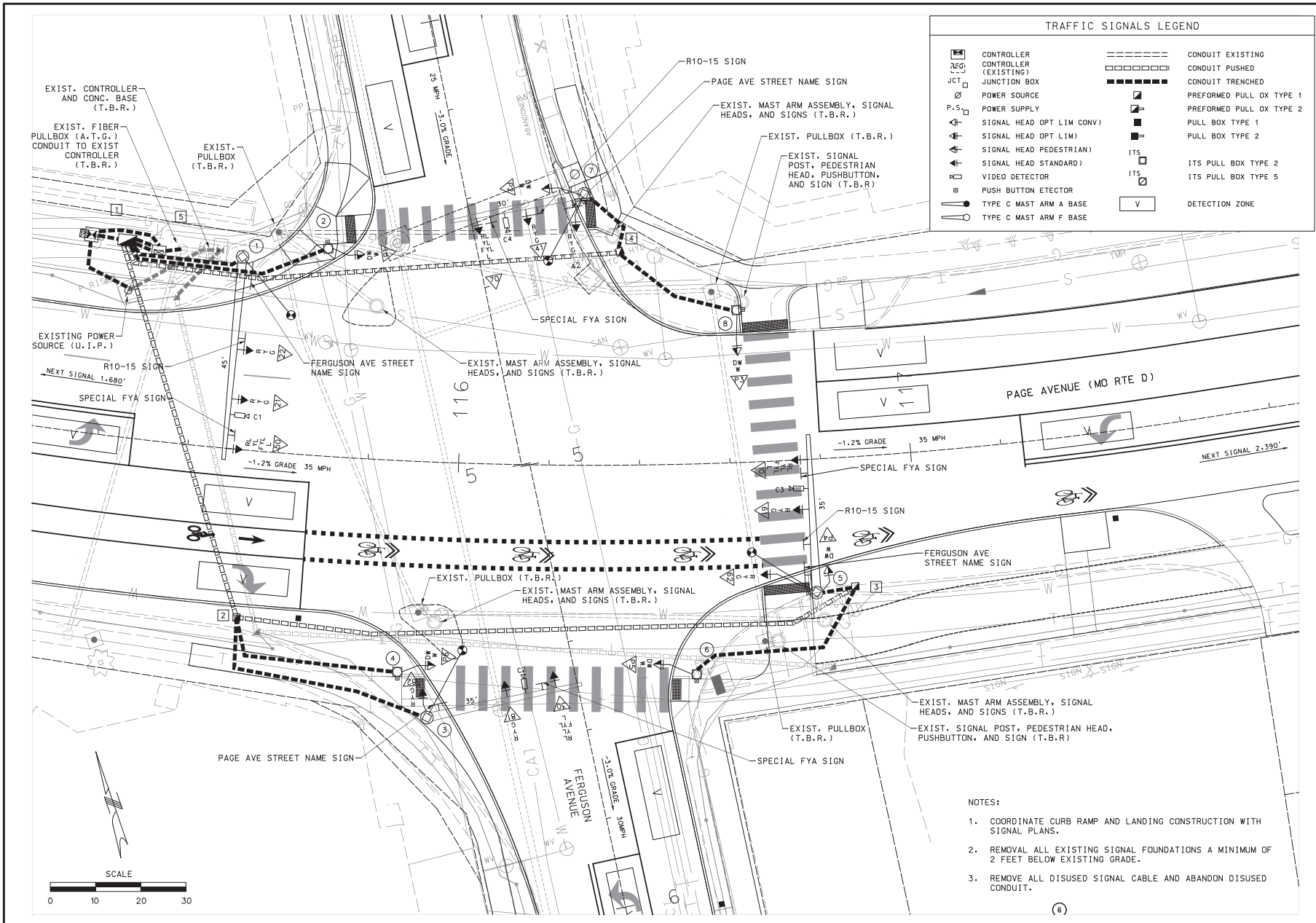
REV	DATE	BY	DESCRIPTION

LOCHMUELLER GROUP
 411 N. 10TH STREET, SUITE 200
 SAINT LOUIS, MISSOURI 63101
 P (314) 431-3888
 WWW.LOCHMUELLER.COM
 MISSOURI STATE ENGINEERING CORPORATION
 CERTIFICATE/LICENSE NO. 2002011852

PAGE AVE. AND FERGUSON AVE INTERSECTION IMPROVEMENTS
 SIGNAL SHEET (1 OF 8)
 SIGNAL PLAN

PROJECT/JOB NO. STP-5402(613)
 MSD PROJECT NO. 18MSD-00118
 MSD BASE MAP 17J2
 DATE PREPARED 10/15/2019
 SHEET 42 OF 55

LOCHMUELLER PROJECT NO. 516-0045



[Symbol]	CONTROLLER (EXISTING)	[Symbol]	CONDUIT EXISTING
[Symbol]	CONTROLLER (EXISTING)	[Symbol]	CONDUIT PUSHED
[Symbol]	JUNCTION BOX	[Symbol]	CONDUIT TRENCHED
[Symbol]	POWER SOURCE	[Symbol]	PREFORMED PULL OX TYPE 1
[Symbol]	POWER SUPPLY	[Symbol]	PREFORMED PULL OX TYPE 2
[Symbol]	SIGNAL HEAD OPT LIM CONV)	[Symbol]	PULL BOX TYPE 1
[Symbol]	SIGNAL HEAD OPT LIM)	[Symbol]	PULL BOX TYPE 2
[Symbol]	SIGNAL HEAD PEDESTRIAN)	[Symbol]	ITS PULL BOX TYPE 2
[Symbol]	SIGNAL HEAD STANDARD)	[Symbol]	ITS PULL BOX TYPE 5
[Symbol]	VIDEO DETECTOR	[Symbol]	DETECTION ZONE
[Symbol]	PUSH BUTTON ETECTOR		
[Symbol]	TYPE C MAST ARM A BASE		
[Symbol]	TYPE C MAST ARM F BASE		

- NOTES:
- COORDINATE CURB RAMP AND LANDING CONSTRUCTION WITH SIGNAL PLANS.
 - REMOVAL ALL EXISTING SIGNAL FOUNDATIONS A MINIMUM OF 2 FEET BELOW EXISTING GRADE.
 - REMOVE ALL DISUSED SIGNAL CABLE AND ABANDON DISUSED CONDUIT.