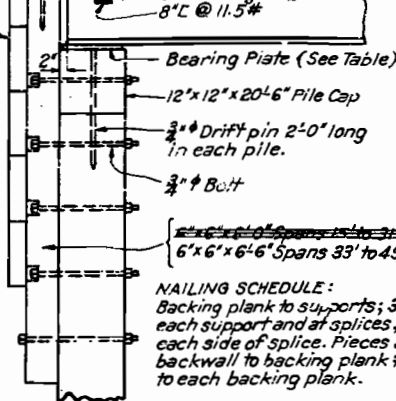


MISSOURI STATE HIGHWAY DEPARTMENT

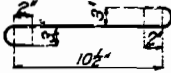
FED. ROAD STATE DIST. NO. 5
 PROJ. NO. WPSO 782A
 YEAR 1935
 SHEET NO. 2
 TOTAL SHEETS 6

2 Layers of roofing felt:
 6"x6"x21'4" with 3"x12"
 drift pin at each backing support.

3"x5"x21'4" Steel Plate
 15"x3"x4" lag screws @
 abt. 20' cts. staggered
 3"x12" Backing Plank



SECTION THRU END BENT AT E

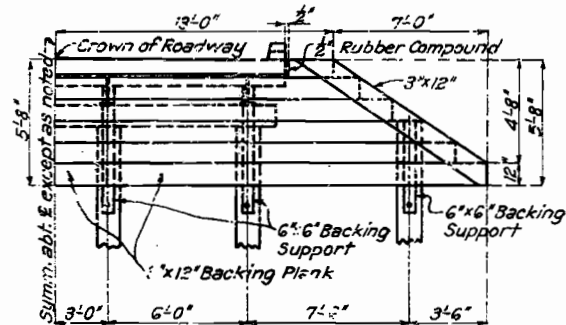
BILL OF REINFORCING STEEL														
NO.	SIZE	LENGTH	MARK	LOCATION	BENDING SKETCH									
"A"	3"	2'-0"	C1	Curb										
"C"	3"	2'-0"	C2	"										
"D"	3"	2'-0"	S1	Slab										
"E"	3"	2'-0"	S2	"										
SPAN														
SINGLE SPAN					ONE END SPAN					ONE INT. SPAN				
"A"	"B"	"C"	"D"	"E"	"A"	"B"	"C"	"D"	"E"	"A"	"B"	"C"	"D"	"E"
15'-0"	8	16'-9"	76	26	16'-9"	8	15'-9"	70	26	15'-9"	8	14'-9"	64	26
17'-0"	8	18'-9"	86	25	18'-9"	8	17'-9"	80	25	17'-9"	8	16'-9"	74	26
19'-0"	8	20'-9"	96	26	20'-9"	8	19'-9"	88	26	19'-9"	8	18'-9"	84	26
21'-0"	8	22'-9"	106	26	22'-9"	8	21'-9"	96	26	21'-9"	8	20'-9"	92	26
23'-0"	8	24'-9"	116	26	24'-9"	8	23'-9"	106	26	23'-9"	8	22'-9"	100	26
25'-0"	8	26'-9"	118	26	26'-9"	8	25'-9"	114	26	25'-9"	8	24'-9"	110	26
27'-0"	8	28'-9"	130	26	28'-9"	8	27'-9"	124	26	27'-9"	8	26'-9"	118	26
29'-0"	8	30'-9"	138	26	30'-9"	8	29'-9"	132	26	29'-9"	8	28'-9"	126	26
31'-0"	8	32'-9"	146	26	32'-9"	8	31'-9"	140	26	31'-9"	8	30'-9"	134	26
33'-0"	15	34'-6"	154	52	34'-6"	16	33'-0"	150	52	34'-6"	16	32'-6"	146	52
35'-0"	16	36'-6"	162	52	36'-6"	16	35'-0"	158	52	36'-6"	16	34'-6"	154	52
37'-0"	16	38'-6"	172	52	38'-6"	16	37'-0"	168	52	38'-6"	16	36'-6"	164	52
39'-0"	16	40'-6"	180	52	40'-6"	16	39'-0"	176	52	40'-6"	16	38'-6"	172	52
41'-0"	16	42'-6"	188	52	42'-6"	16	41'-0"	184	52	42'-6"	16	40'-6"	180	52
43'-0"	16	44'-6"	196	52	44'-6"	16	43'-0"	192	52	44'-6"	16	42'-6"	188	52
45'-0"	16	46'-6"	206	52	46'-6"	16	45'-0"	200	52	46'-6"	16	44'-6"	196	52
47'-0"	16	48'-6"	216	52	48'-6"	16	47'-0"	210	52	48'-6"	16	46'-6"	204	52
49'-0"	16	50'-6"	224	52	50'-6"	16	49'-0"	220	52	50'-6"	16	48'-6"	216	52

Note: Reinforcing bars in each span to be billed and tagged separately.

SUBSTRUCTURE TIMBER RILLS				
PIECE	NO.	SIZE	LENGTH	REMARKS
Backing Plank	1	3"x12"	23'-6"	Cut to length.
"	1	3"x12"	17'-6"	"
"	1	3"x12"	22'-0"	"
"	1	3"x12"	16'-0"	"
"	1	3"x12"	20'-6"	"
"	1	3"x12"	14'-6"	"
"	1	3"x12"	19'-0"	"
"	1	3"x12"	13'-0"	"
"	1	3"x12"	17'-6"	"
"	1	3"x12"	11'-6"	"
Shoulder Plank	2	3"x8"	24'-9"	"
Edge Support	2	3"x12"	19'-6"	Cut to length & shape.
Backing Support	4	6"x6"	6'-6"	"
Spans 33' to 49' Incl.	4	6"x6"	6'-6"	"
Backing Support	2	6"x6"	4'-0"	"
Back Support Cap	1	6"x6"	2'-4"	Cut to length.
Pile Cap	1	12"x12"	20'-6"	"

Note: Any irregularity in alignment of piling in end bents to be corrected by facing or E surface of the 6"x6" backing support so as to place the surface of the backing in a true plane and eliminate any strain on the backing plank. Splice in backing plank to be made at center of 6"x6" backing support and to be alternated on the two intermediate supports.

DIMENSIONS		
SPAN	"G"	"H"
15'-0"	2'-1"	2'-3"
17'-0"	2'-1"	2'-2"
19'-0"	2'-3"	2'-3"
21'-0"	2'-3"	2'-4"
23'-0"	2'-3"	2'-0"
25'-0"	2'-1"	2'-2"
27'-0"	2'-1"	2'-2"
29'-0"	2'-3"	2'-4"
31'-0"	2'-3"	2'-4"
33'-0"	2'-4"	2'-5"
35'-0"	2'-4"	2'-5"
37'-0"	2'-4"	2'-5"
39'-0"	2'-7"	2'-8"
41'-0"	2'-7"	2'-8"
43'-0"	2'-7"	2'-8"
45'-0"	2'-10"	2'-10"
47'-0"	2'-11"	2'-11"
49'-0"	2'-11"	2'-11"



HALF ELEVATION OF END BENT

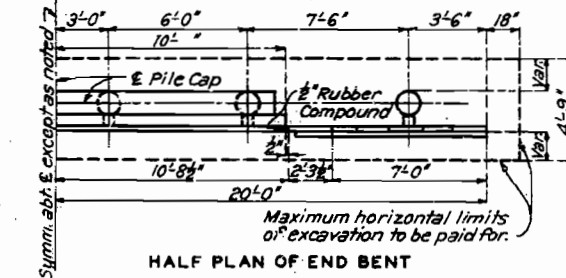
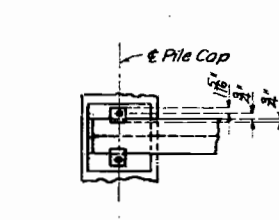
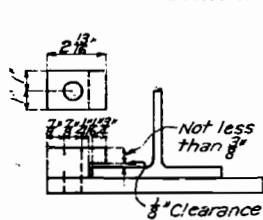
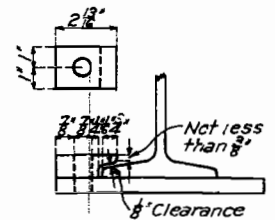
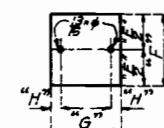


TABLE OF BEARING PLATES									
SPAN	NO.	STRINGER	AT END BENTS				AT INT. BENTS		
"S"	PLATES		THICK.	"F"	"G"	"H"	THICK.	"I"	"J"
15'-0"	4	All	3"	10"	11"	13"	3"	10"	11"
17'-0"	4	"	3"	10"	11"	13"	3"	10"	11"
19'-0"	4	"	3"	10"	12"	13"	3"	10"	12"
21'-0"	4	"	3"	10"	12"	13"	3"	10"	12"
23'-0"	4	"	3"	10"	12"	13"	3"	10"	12"
25'-0"	4	"	3"	10"	12"	13"	3"	10"	12"
27'-0"	4	"	3"	10"	12"	14"	3"	10"	12"
29'-0"	4	"	3"	10"	12"	14"	3"	10"	12"
31'-0"	4	"	3"	10"	13"	14"	3"	10"	13"
33'-0"	4	"	3"	11"	13"	14"	3"	11"	13"
35'-0"	4	"	3"	11"	13"	14"	3"	11"	13"
37'-0"	4	"	3"	11"	13"	14"	3"	11"	13"
39'-0"	4	"	3"	11"	13"	14"	3"	11"	13"
41'-0"	4	"	3"	11"	13"	14"	3"	11"	13"
43'-0"	2	Outside	3"	11"	14"	14"	3"	11"	14"
45'-0"	2	Inside	3"	11"	14"	14"	3"	11"	14"
47'-0"	4	"	3"	11"	14"	14"	3"	11"	14"
49'-0"	4	"	3"	11"	14"	14"	3"	11"	14"



DETAILS OF FLANGE CLAMPS

Note: Cast iron clamps used on bearing plates to have 1/8" clearance at flange of beam to allow for expansion. All clamps to have 3/4" cored holes. Use two clamps only on each I-Beam at pile caps on end bents.

Sheet No. 2 of 2

BRIDGE OVER DRAINAGE DITCH NO. 72

STATE ROAD FROM ROUTE 84 TO BRAGG CITY
 ABOUT 1.0 MILE WEST OF BRAGG CITY

PROJECT NO. WPSO 782A (SA) STA. 967+37.10

PEMISCOT COUNTY

NO CONSTRUCTION CHANGES

FINAL PLANS

F-536

373

Drawn Aug. 1933 By R.J.G.
 Checked Aug. 1933 By R.J.G.
 Assembled April 1935 By A.J.B.
 Checked May 1935 By A.J.B.

Note: This drawing is not to scale. Follow dimensions.