

Steven V. Stenger
County Executive



Daniel W. Dreisewerd, P.E., PTOE
Acting Director

Stephanie Leon Streeter, P.E.
Deputy Director

July 10, 2017

ADDENDUM NO. 5

Notice to All Persons and Firms Proposing
to Submit a Bid or Furnish Materials for
Musick Avenue Bridge No. 412
St. Louis County Project No. CR-1452
Federal Project No. BRM-5572(602)

The construction contract for this project has been revised as follows:

No. 1

Revised Sheet 5 of 53 in construction plan set as follows:

Deleted Type II Rock Blanket gradation summary table

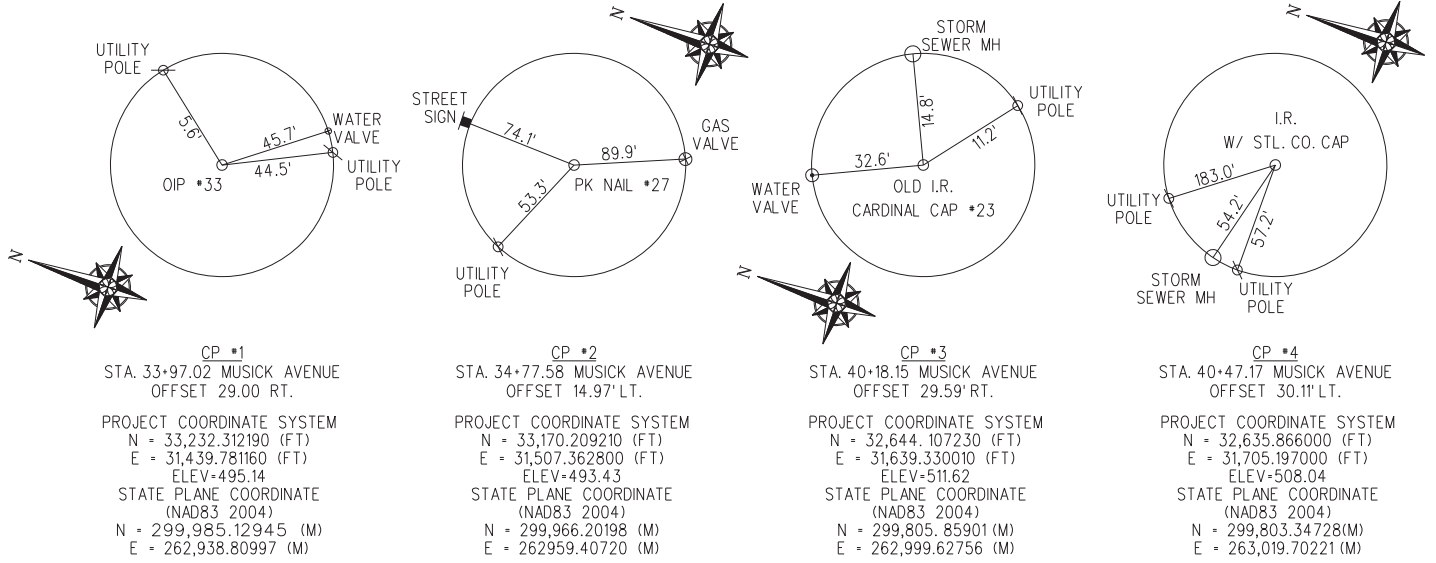
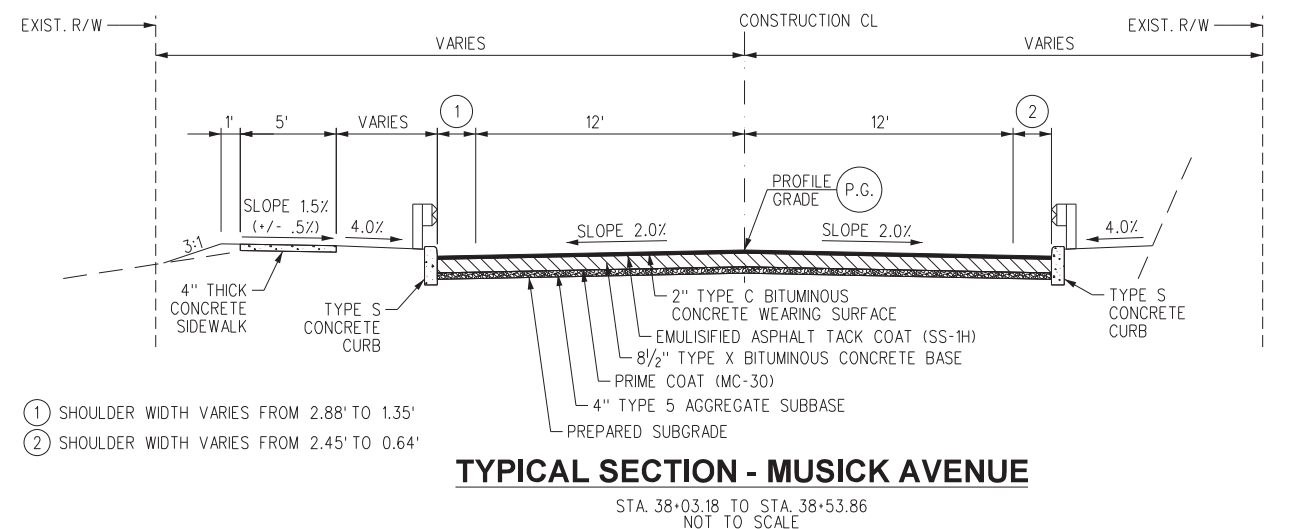
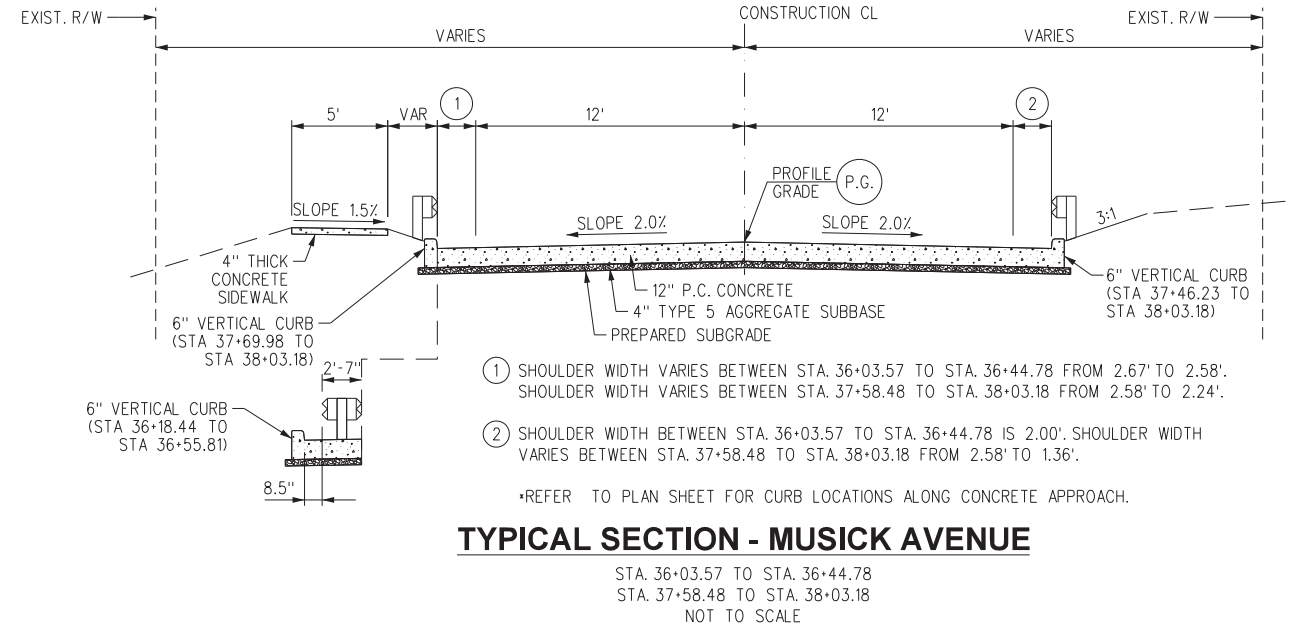
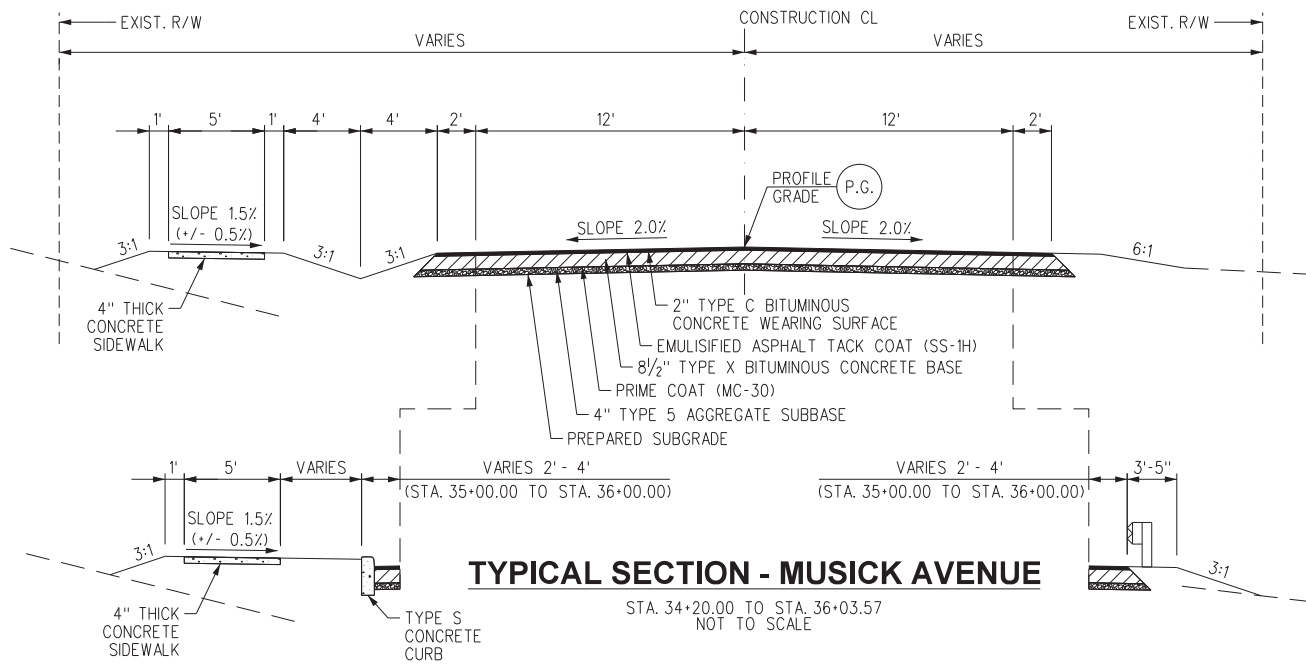
REVISED CONSTRUCTION PLAN SHEET 5 OF 53 IS ATTACHED AND SHOWS THE CHANGE NOTED IN ITEM NO. 1 ABOVE.

ATTENTION BIDDERS: THE ADDENDUM ACKNOWLEDGEMENT IN THE BID DOCUMENTS MUST BE COMPLETED AND SUBMITTED WITH ALL BID PROPOSALS.

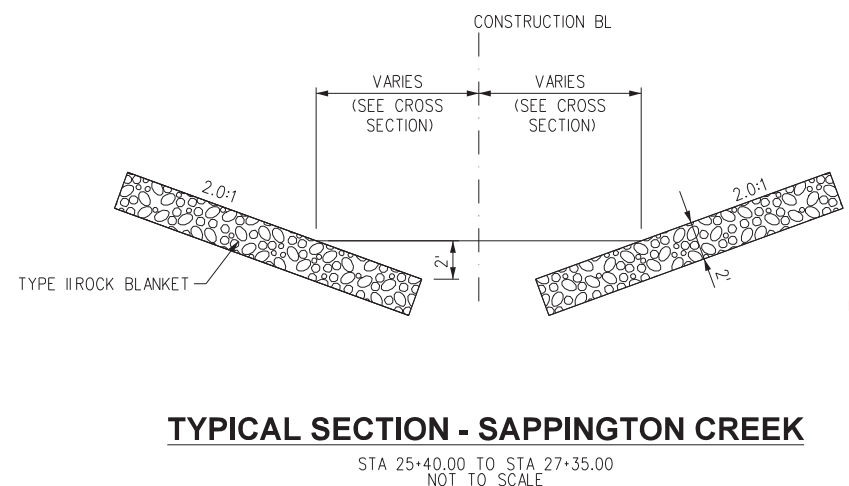
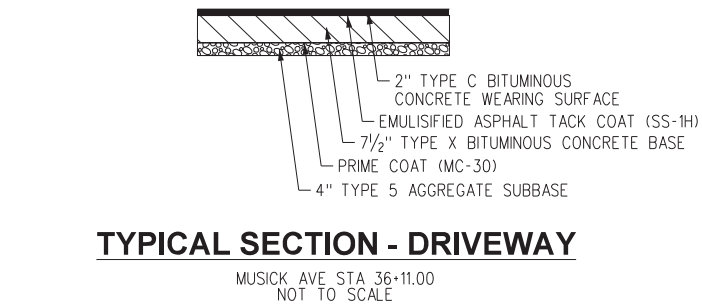
A handwritten signature in blue ink, appearing to read "Joseph Kulesa".

Joseph Kulesa, P.E.
Acting Division Manager, Design

JK/PRT



COORDINATE POINT LISTING				
LOCAL COORDINATE SYSTEM				
STATION	LOCATION	NORTHING	EASTING	DESCRIPTION
34+20.00	MUSICK AVENUE	33,219.90	31,474.64	BEGIN PROJECT
38+53.86	MUSICK AVENUE	32,809.18	31,614.41	END PROJECT
25+40.00	SAPPINGTON CREEK	32,919.94	31,665.23	BEGIN PROJECT
27+35.00	SAPPINGTON CREEK	32,971.88	31,477.27	END PROJECT



DELETED

TYPE II ROCK BLANKET		
% FINER BY WEIGHT	LIMITS OF STONE WEIGHT (lb)	
	MAX	MIN
100	2,331	933
50	691	167
15	346	146

COUNTY PROJECT NO. **CR-1452**

FEDERAL PROJECT NO. **BRM-5572(602)**

E-W GATEWAY TIP NO. **6358-15**

MSD: **P-0030707-00**

MSD BASE MAP: **27K**

REV.	DATE	BY	APP.	DESCRIPTION

DISCLAIMER OF LIABILITY: I hereby specify that the documents intended to be used by any contractor are limited to the project and I hereby disclaim any responsibility for all other documents or instruments relating to or intended to be used on any project or survey.

STATE OF MISSOURI
JEFFREY E. MUES
ENGINEER
LICENSE NO. 2000182446

DATE: **09/07/2016**

BURNS & MCDONNELL
425 SOUTH WOODS MILL ROAD
CHESTERFIELD, MISSOURI 63017
ENG. 000185
J. MUES
PROFESSIONAL ENGINEER
LICENSE NO. 2000182446

Saint Louis COUNTY TRANSPORTATION PUBLIC WORKS
Nicholas D. Gardner, Ph.D., P.E.
Director

MUSICK AVENUE BRIDGE NO. 412 OVER SAPPINGTON CREEK

TYPICAL SECTIONS

DESIGNED: **J. MUES**

DRAWN: **D. MICKE**

CHECKED: **K. RESTOFF**

SHEET SEQUENCE: **5 OF 53**