

Overall Context Map

- 6 shared interest in a bridge connection between Unger Park and Greentree Park
- 3 shared support for this project and proposed connection
- 4 shared opposition to development of overlook on east side of river

- Improve the river. Even a dam downstream
- How about adding a ferry here?
- No public access on privately owned land
- No bikes in Emmenegger Nature Park

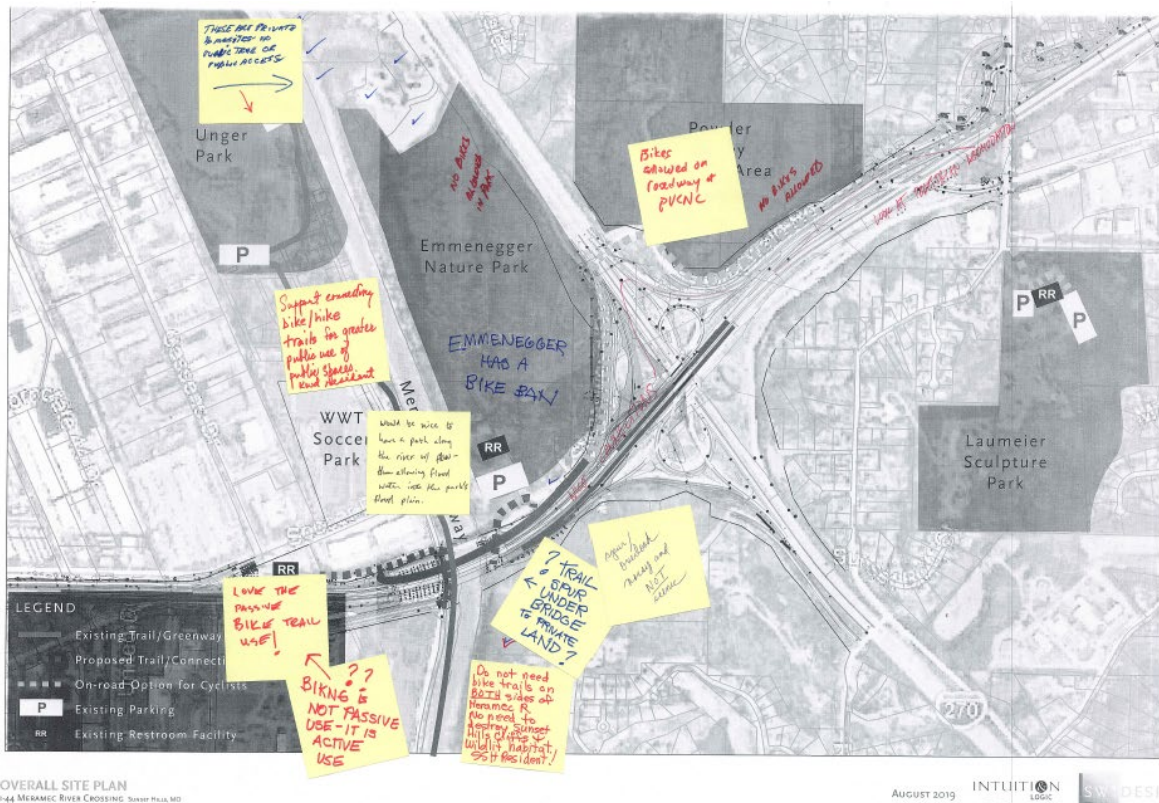


Project Area Map

- 2 reaffirmed that no bikes are allowed in Emmenegger Nature Park
- 2 in support of bike trail connections across the Meramec River
- 2 opposed to trail spur south of Emmenegger Nature Park
- 2 reaffirmed no bikes are allowed in Powder Valley Nature Center, only on entrance roadway

Additional Comments:

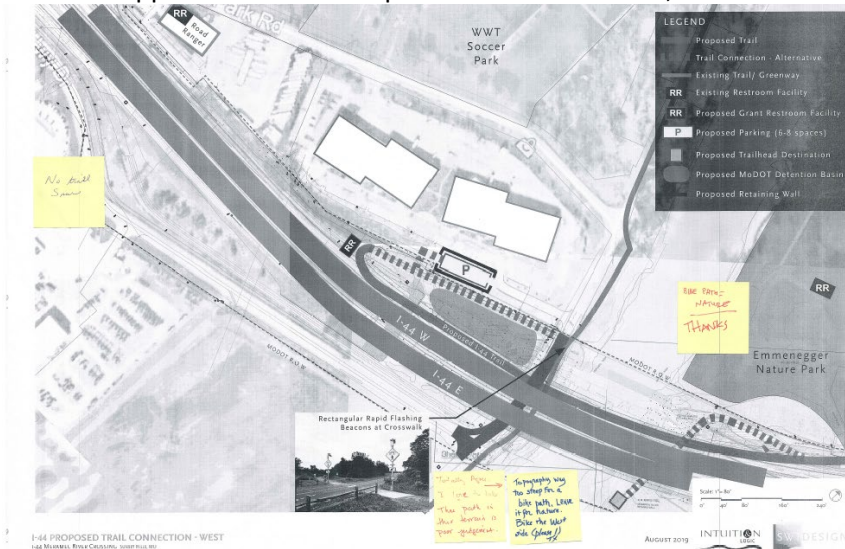
- No public trails on private home sites (North of Emmenegger Nature Park)
- Request for path along river that allows flood water into the park's floodplain
- Request to study pedestrian connection from Emmenegger Nature Park to Powder Valley



West Connection

1. Crossing North of I-44 and Additional Parking

- 3 opposed to overlook spur on East side of river, concerned about steep terrain

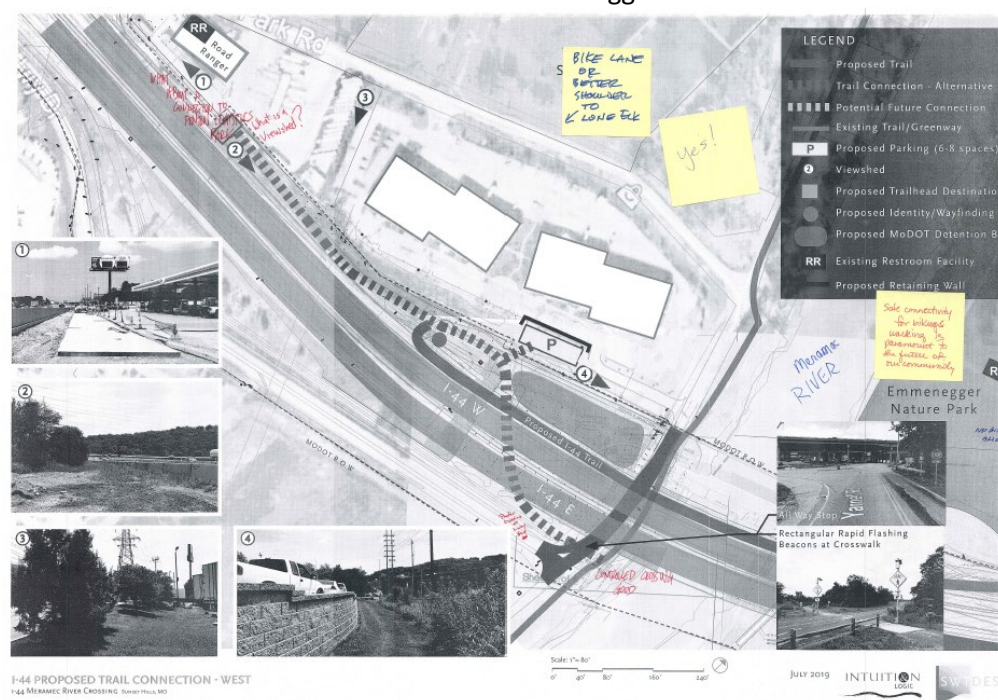


2. Crossing South of I-44 and Spur to Road Ranger

- 2 responded Yes to controlled 3-way stop crossing
- 2 requested a bike lane or shoulder along route to Lone Elk Park (starting at Soccer Park Rd.)

Additional Comments:

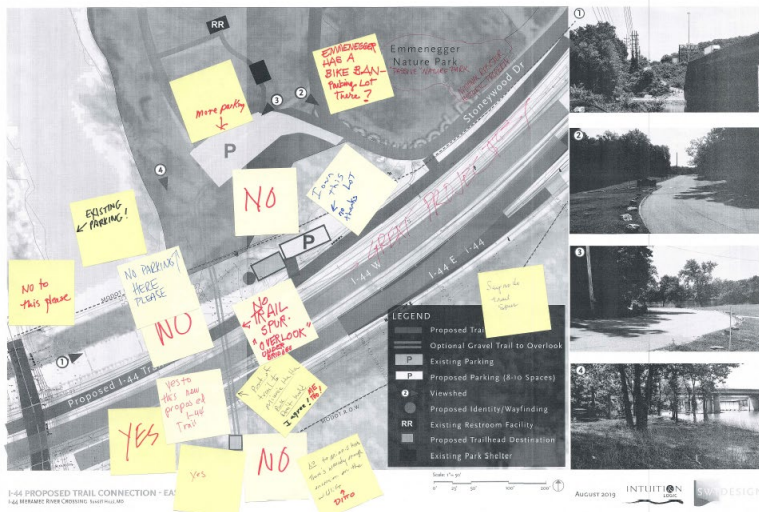
- “Safe connectivity for biking and walking is paramount to the future of our community.”
- Suggestion for a connection to Fenton Logistics Park
- Reminder no bikes are allowed in Emmenegger Nature Park



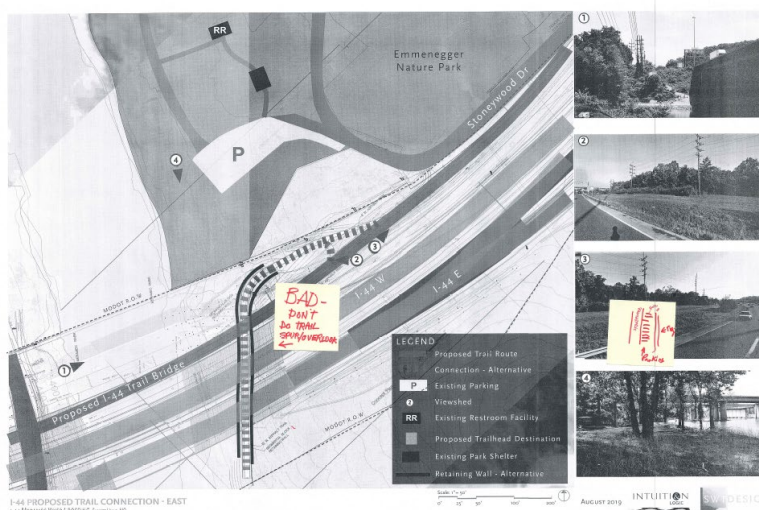
1. Gravel Trail to riverside landing/Trailhead with parking

- 2 responded No to trail spur overlook
- 5 responded No to a full connection to Minnie Ha Ha Park
- 3 responded No to general plan
- 4 responded Yes to general plan
- 1 responded Yes to additional parking

- Request for no parking along river's edge at Emmenegger Nature Park
- Opposition to development from owner of land between MODOT R.O.W. and Emmenegger Nature Park

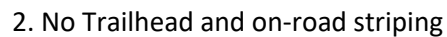


- 1 opposed to trail spur overlook
- Sketch showing head-in parking off of Stoneywood Drive



1. Parking/Trailhead and on-road connection

- 2 people in support of project and safe crossing over the Meramec River
- Suggestion to utilize Geyer Road for access to Grant's Trail
- Suggestion to connect to Kirkwood Bike Trail 7
- 1 in favor of striped bike lanes on Stoneywood and Craigwood
- Also consider pedestrian improvements



- 6 responses prefer striping the bike lane
- No-curbs preferred, or rolled curbs instead of barrier
- Request to sweep shoulders frequently to keep them bike friendly



Amenity Character and Material Preferences

1. Seating and Shade Structures - ***Traditional: 26**, Unique/Artistic: 10
2. Trailheads and Nodes - Formal: 2, ***Informal: 28**
3. Trailhead Parking + Amenities - ***Bicycle & Pedestrian Focused: 21**,
Vehicular Access & Group Amenities: 19
4. Trail Identity Elements - ***Integrated/ Branded: 26**, Unique/Artistic: 9
5. Trail Node Character - Standard at all Locations: 17, ***Site Specific: 22**

Additional Comments

- Please use native plants – less mowing and maintenance
- Water fountains
- Beautiful metal on entrances
- Why do we need any of this? Spend our tax dollars productive
- There's already a shelter at Emmenegger
- Stone benches don't rust or move
- Spend funds on adding/expanding the trail system, not on monuments
- This is an excellent use of parks and rec taxes. Would whole-heartedly support!
- Appreciate information/ historical type signs.
- Don't pave bike trail through east riverfront – no trail spur!
- Great Connection! Great Project!
- Great project – but spend money on more trails – no need for fancy stuff.

AMENITY CHARACTER AND MATERIAL PREFERENCES
PLEASE INDICATE YOUR PREFERENCE USING THE STICKERS PROVIDED

Seating + Shade Structures

PLACE STICKER HERE

PLACE STICKER HERE

PLACE STICKER HERE

PLACE STICKER HERE

Trailheads + Nodes

PLACE STICKER HERE

PLACE STICKER HERE

PLACE STICKER HERE

PLACE STICKER HERE

Trailhead Parking + Amenities

PLACE STICKER HERE

PLACE STICKER HERE

PLACE STICKER HERE

PLACE STICKER HERE

Trail Identity Elements

PLACE STICKER HERE

PLACE STICKER HERE

PLACE STICKER HERE

PLACE STICKER HERE

Trail Node Character

PLACE STICKER HERE

PLACE STICKER HERE

PLACE STICKER HERE

PLACE STICKER HERE

GENERAL COMMENTS:

please use native plants - less mowing & maintenance
beautiful metal on entrances
Why do we need any of this? - there is an excellent use
Spend our tax dollars productive of parks & rec taxes.
There's already a shelter at Emmenegger
Stone benches don't rust or move
Spend funds on adding/expanding the trail system, not on monuments.

Don't pave bike trail through east riverfront - NO TRAIL SPUR!
GREAT CONNECTION! GREAT PROJECT!
Great project - but spend money on more trails - no need for fancy stuff.

AMENITY CHARACTER AND MATERIAL PREFERENCES
1425 MERAMEC RIVER CROSSING - I-44 / 400
AUGUST 2019 INTUITION DESIGN SVS DESIGN