

AMENITY CHARACTER AND MATERIAL PREFERENCES

PLEASE INDICATE YOUR PREFERENCE USING THE STICKERS PROVIDED.

Seating + Shade Structures

Trailheads + Nodes

Trailhead Parking + Amenities

Trail Identity Elements

Trail Node Character

please use native plants - less mowing & maintenance
water features
why do we need any of this? this is an excellent use of space for the public to enjoy the river. There's already a bike lane in Emmenegger. Stone arches don't need or more. Spend funds on adding/expanding the trail system, not amenities.

Don't pave bike trail through East River front - NO TRAIL SPUR!
GREAT CONNECTION! GREAT PROJECT!

Appendix: International/historical type sign

Greenway Project - But Shaded history are not there - No more the best project



Community Meeting #01 Feedback - Summary

Input Meeting #1 - Tuesday August 20, 2019

- Held at Sunset Hills Community Center
- 169 attendees signed-in on attendance sheet
- Input received maps, sticker preference, notes and discussion
- Web link provided on online input form on welcome letter

Online Feedback Form

- Open for input August 20 - September 6, 2019
- Received 258 responses
- 188 individuals completed the full form

Great Rivers Greenway

I-44/Meramec River Crossing Feedback Form

Thanks in advance for your input!

This is one opportunity to give your input about the separated path for people walking and biking across the Meramec River, parallel to Interstate 44, plus the amenities, trailhead options and possible connections from that spot.

1. What is your name? (First, Last)

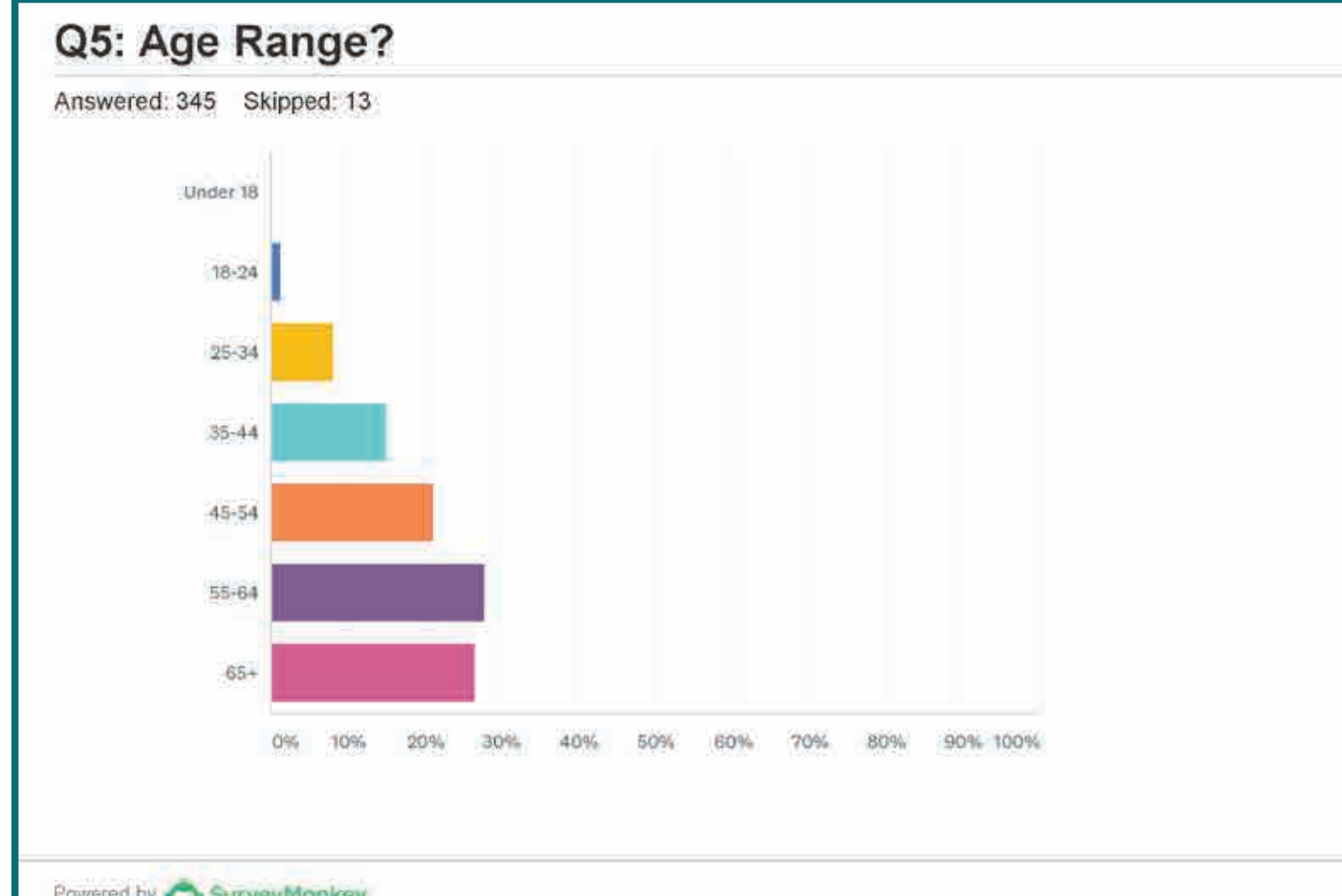
2. Would you like to get project updates by phone? Leave your number here!

3. Would you like to get project updates by email? Leave your email here!

Q7: To help us ensure we're hearing from all residents, please consider this optional question: What is your gender?

Answered: 347 Skipped: 11

Gender	Percentage
Female	40%
Male	50%
Non-Binary/Third Gender	0%
Prefer Not to Answer	10%
Other (please specify)	0%



- Q8. What motivated you to attend today's input session?**
- 239/358 respondents answered and identified the following as their motivation for attending the first input session. Of all the 358 respondents:
- Interest in Greenway Connectivity – 25%
 - Environmental/Wildlife Concerns – 13%
 - To Receive Information – 13%
 - Online Platform – 7%
 - Word of Mouth – 3%
 - In Opposition – 3%
 - Lives/Work in Close Proximity – 2%





Survey Feedback

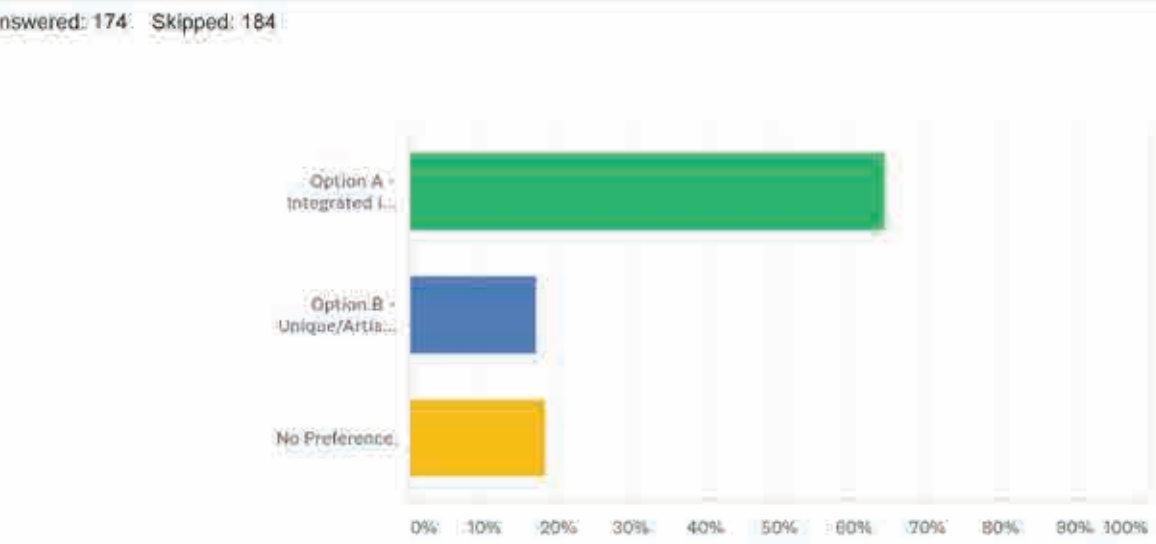
Q9. What and where would you like the greenway to connect to?

- 233 of 358 respondents answered and commented on the following as their preference for greenway connectivity. Of all the 358 respondents:
- 12% expressed support for the current proposed connections in the project
 - 8% mentioned other trails
 - 6% referenced Gravois Greenway: Grant's Trail
 - 5% mentioned not wanting any connections
 - 4% mentioned not connecting to Emmenegger Park
 - 4% mentioned destinations in the City of Kirkwood
 - 3% mentioned not wanting the spur or future trails
 - 3% mentioned other parks and natural areas
 - Less than 1% mentioned another bridge linking Unger and Greentree parks, connecting to Route 141, connecting to Eureka and Route 66 State Park or destinations in the City of St. Louis

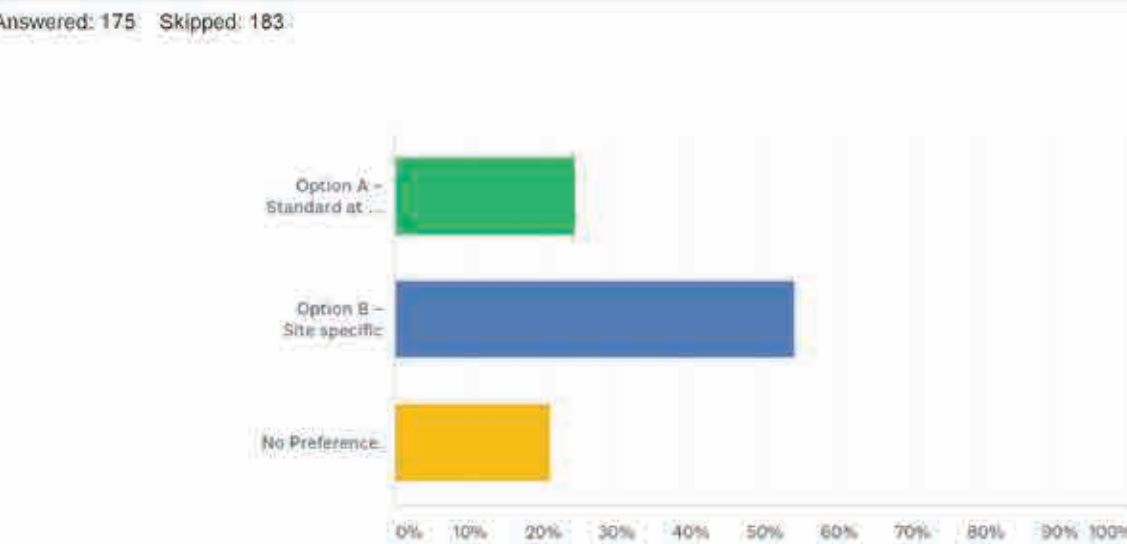
Q10. Any other general comments?

- 165/358 respondents answered. Of all the 358 respondents:
- 11% expressed questions or concerns about the environmental impact of future projects that may extend trails or greenways further on the east/north side of the Meramec River
 - 9% offered general support or future desired connections
 - 2% asked informational questions about flooding, cost, bike lanes, etc.

Q28: Which trail identity elements do you prefer?

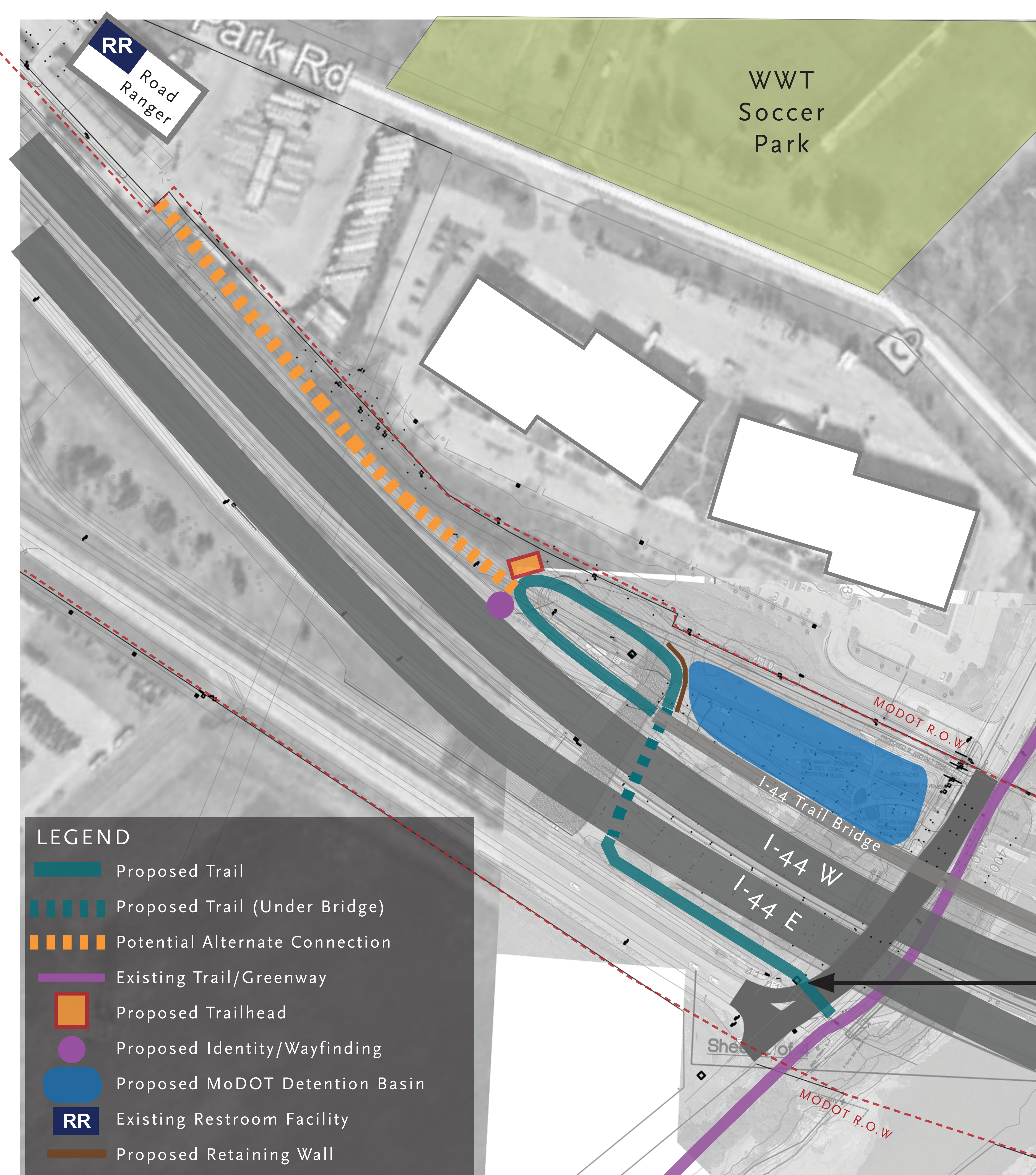


Q29: Which trail character elements do you prefer?



LEGEND

- Existing Trail/Greenway
- Bike / Pedestrian Bridge
- Proposed Trail/Connection to Bridge
- On-road Option for Cyclists
- P Existing Parking
- RR Existing Restroom Facility
- 0.5 mile Radius from Bridge:
 - 2 minute bike ride
 - 5 minute run
 - 8 minute walk
- 1.0 mile Radius from Bridge:
 - 5 minute bike ride
 - 10 minute run
 - 15 minute walk

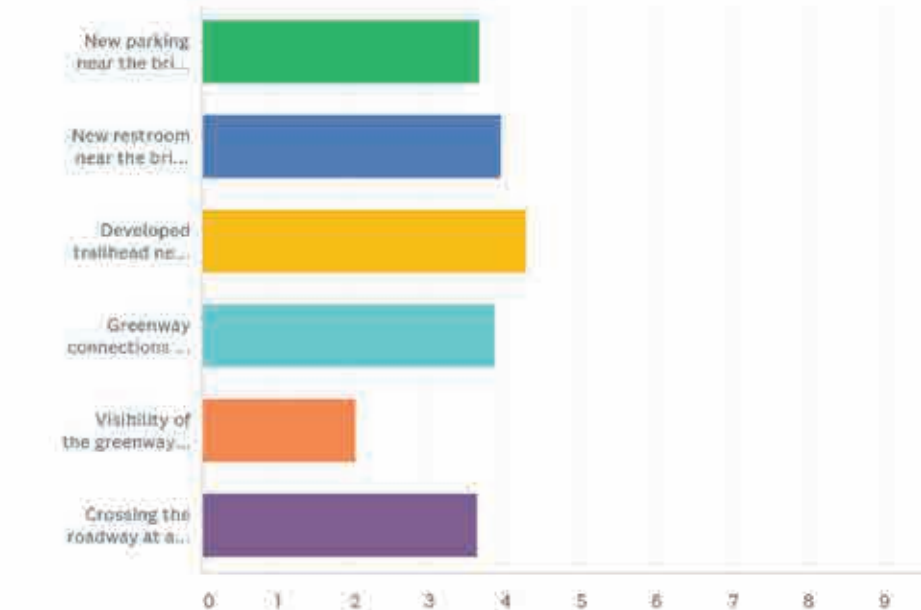


I-44 PROPOSED TRAIL CONNECTION - WEST
I-44 MERAMEC RIVER CROSSING SUNSET HILLS, MO

Survey Feedback

Q11: Please rank your top priorities for the West Bridge Approach from the list below!

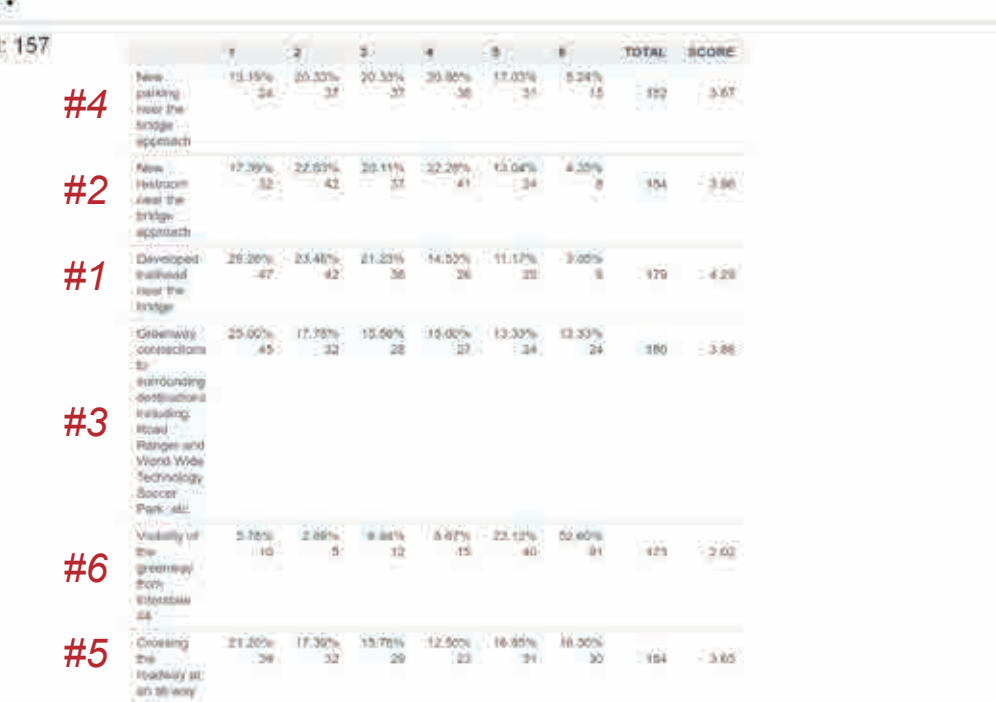
Answered: 201 Skipped: 157



Powered by SurveyMonkey

Q11: Please rank your top priorities for the West Bridge Approach from the list below!

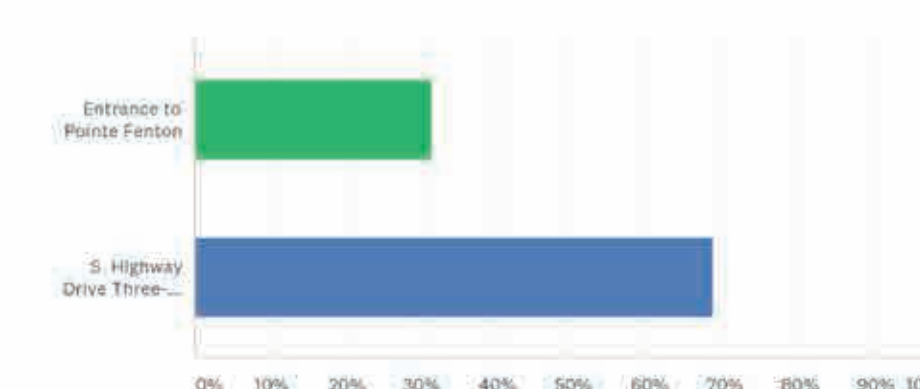
Answered: 201 Skipped: 157



Powered by SurveyMonkey

Q12: Which crossing location along Yarnell Road do you prefer?

Answered: 159 Skipped: 199



Powered by SurveyMonkey

Q12: Which crossing location along Yarnell Road do you prefer?

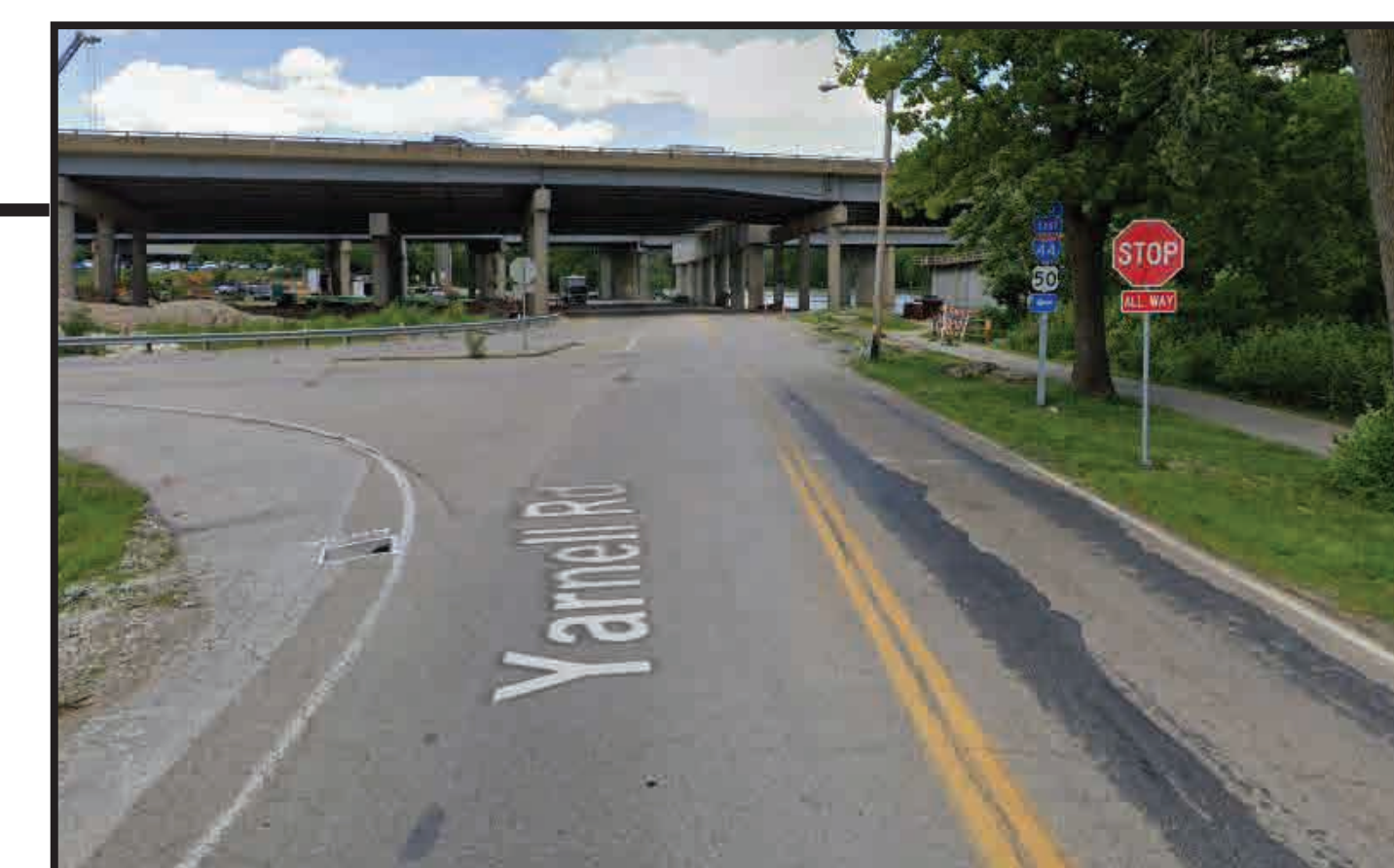
Answered: 159 Skipped: 199

ANSWER CHOICES	RESPONSES
Entrance to Pointe Fenton	31.45% 50
S. Highway Drive Three-Way Stop	68.55% 109
TOTAL	159

Powered by SurveyMonkey

Q13 – Q15: West Bridge Approach Feedback

- Respondents identified the following as preferred amenities to include:
 - Water Station
 - Restrooms
 - Betterment to lighting, benches, trash cans
 - Wayfinding (trail maps, signage, etc.)
 - Parking
- Respondents also expressed an interest in:
 - Prioritizing amenities usability over aesthetics.
 - Keeping native vegetation.
 - To consider increasing patrolling if there is added parking.
 - Street congestion and potential speeding



OCTOBER 15, 2019

INTUITION & LOGIC

SWTDESIGN