

Steven V. Stenger
County Executive



Daniel W. Dreisewerd, P.E., PTOE
Acting Director

Stephanie Leon Streeter, P.E.
Deputy Director

November 1, 2017

ADDENDUM NO. 1

Notice to All Persons and Firms Proposing
to Submit a Bid or Furnish Materials for
Vance Road Bridge No. 368 & Vance Road ARS Infrastructure
St. Louis County Project No. AR-1648 & AR-1491
Federal Project No. BRM-9900(680) & STP-9900(663)

The following clarifications are offered to assist potential bidders in compiling their bid proposals:

No. 1

Three (3) plan sheets are attached to provide further information regarding the pedestrian bridge on Vance Road which will be relocated as part of this project:

- One (1) sheet showing structural construction details of the existing pedestrian bridge
- Two (2) shop drawing sheets of the existing pedestrian bridge

No. 2

Final coordination details for the removal and relocation of the existing pedestrian bridge will be finalized with the City of Valley Park prior to the start of construction. Bidders are advised to bid the work related to these items as they deem appropriate based on the information provided in JSP 1200.70.6.

No. 3

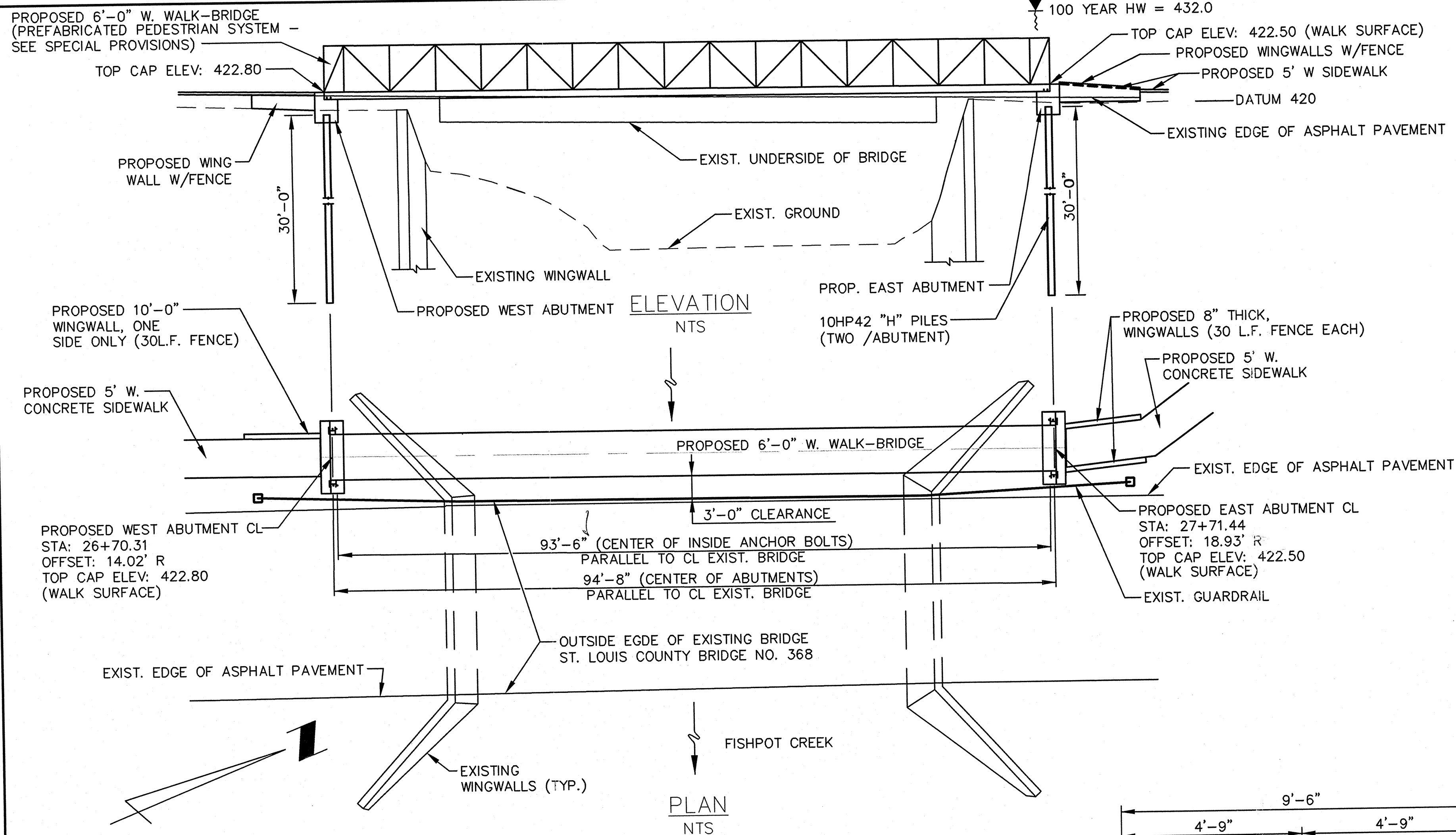
Further utility coordination has been completed with Ameren. Ameren now anticipates that the relocation of the affected poles will be completed prior to the contract Notice to Proceed date of March 12, 2018.

ATTENTION BIDDERS: THE ADDENDUM ACKNOWLEDGEMENT IN THE BID DOCUMENTS MUST BE COMPLETED AND SUBMITTED WITH ALL BID PROPOSALS.

A handwritten signature in blue ink, appearing to read "Joseph Kulesa".

Joseph Kulesa, P.E.
Division Manager, Design

JK/PRT



TOTAL BILL OF MATERIAL

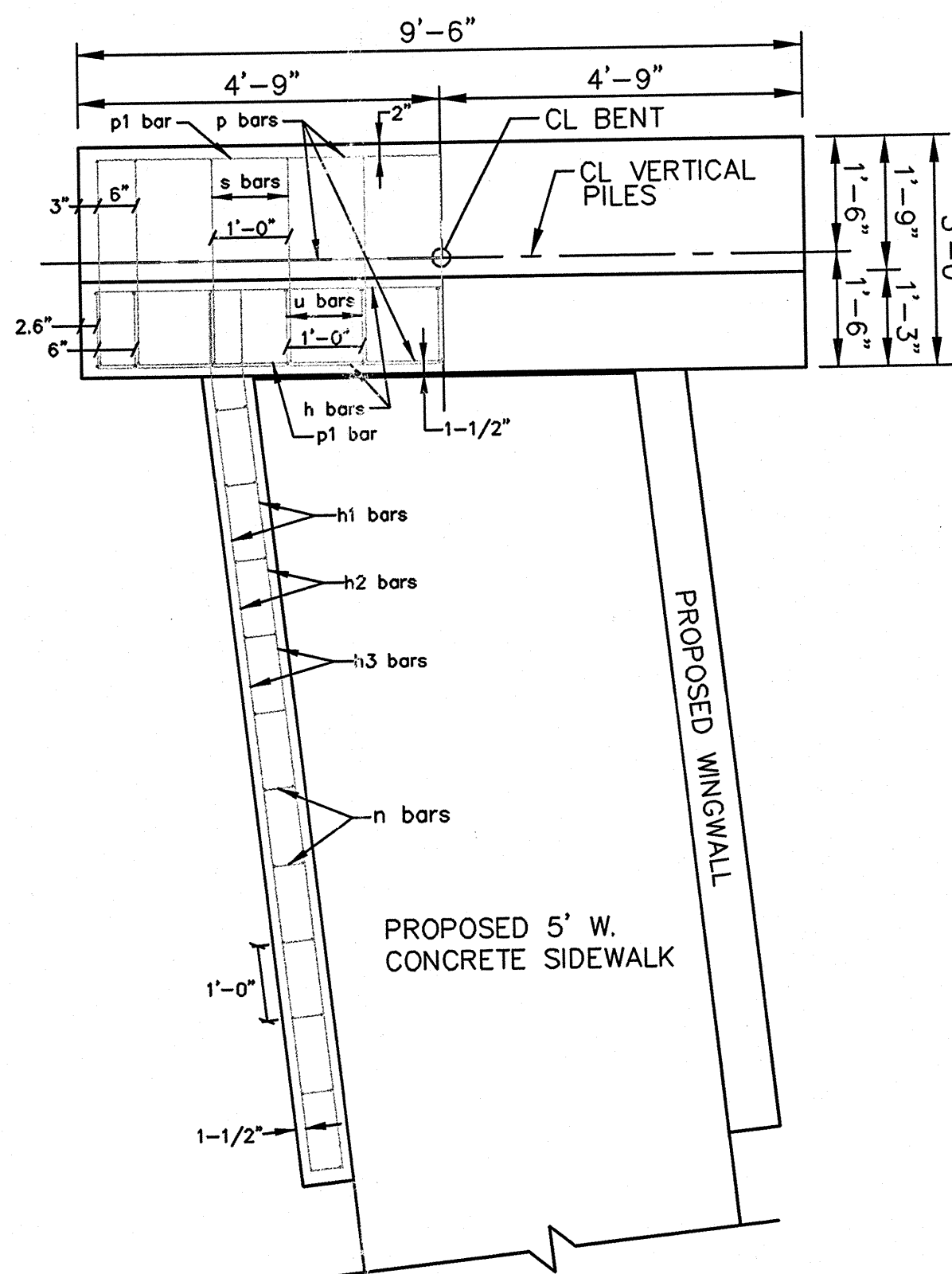
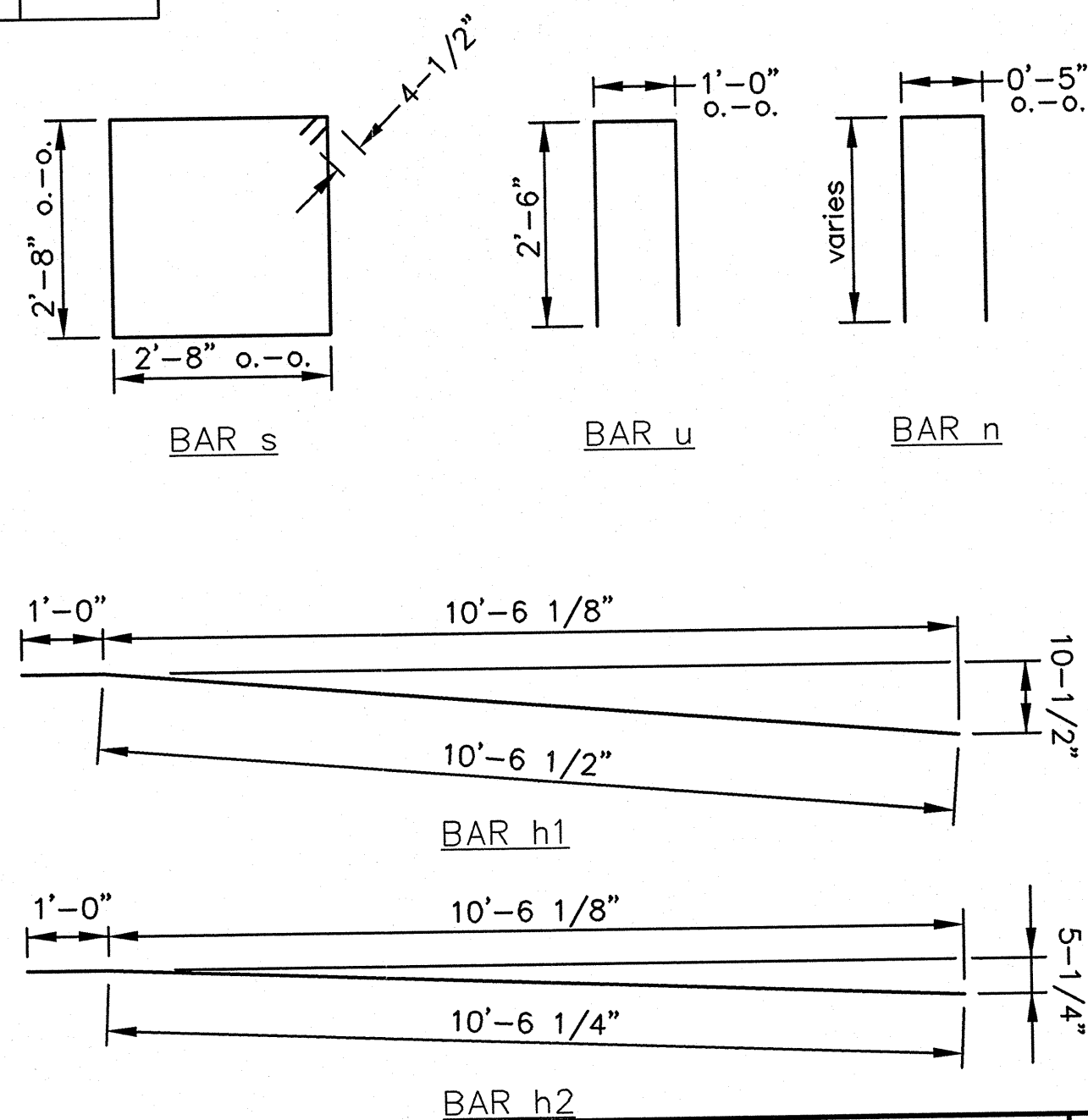
ITEM	UNIT	TOTAL
STRUCTURE EXCAVATION	CU. YD.	7.09
CLASS X CONCRETE	CU. YD.	1.13
CLASS X CONCRETE - WINGWALLS	CU. YD.	1.13
F & E STRUCTURAL STEEL (A588)	L. SUM	4
ELASTOMERIC BEARING ASSEMBLY TI	EACH	4
REINFORCEMENT BARS	LBS.	945
REINFORCEMENT BARS - WINGWALLS	LBS.	180
PILES	LIN. FT.	120

PILE DATA

ABUTMENT	WEST	EAST
TYPE	H	H
CAPACITY - TON	10	10
ESTIMATED LENGTH - FEET	30	30
NUMBER REQUIRED	2	2
PILES	10HP42	10HP42

BAR LIST FOR ONE ABUTMENT

BAR	NO.	SIZE	LENGTH	SHAPE
h	42	#5	9'-0"	□
h1	3	#5	11'-6.5"	□
h2	3	#4	11'-6.3"	□
h3	3	#5	11'-6"	□
n	16	#4	varies	□
p	12	#5	9'-0"	□
p1	4	#5	9'-0"	□
s	24	#4	10'-9"	□
u	24	#4	6'-0"	□

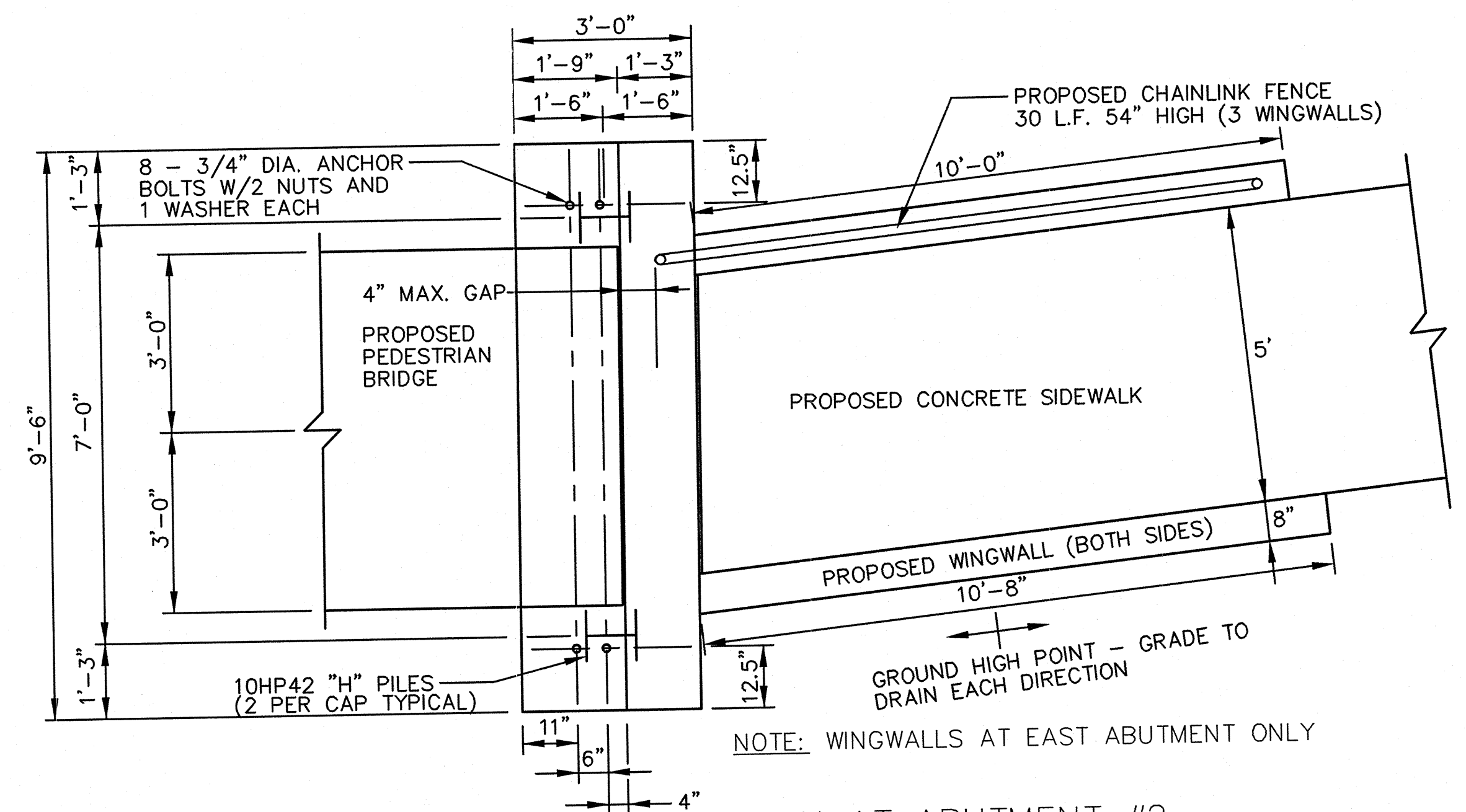


NOTE: WINGWALLS TYPICAL AT EACH ABUTMENT
PLAN AT WEST ABUTMENT SIMILAR, EXCEPT HAS 10' LONG WINGWALL NORTH SIDE

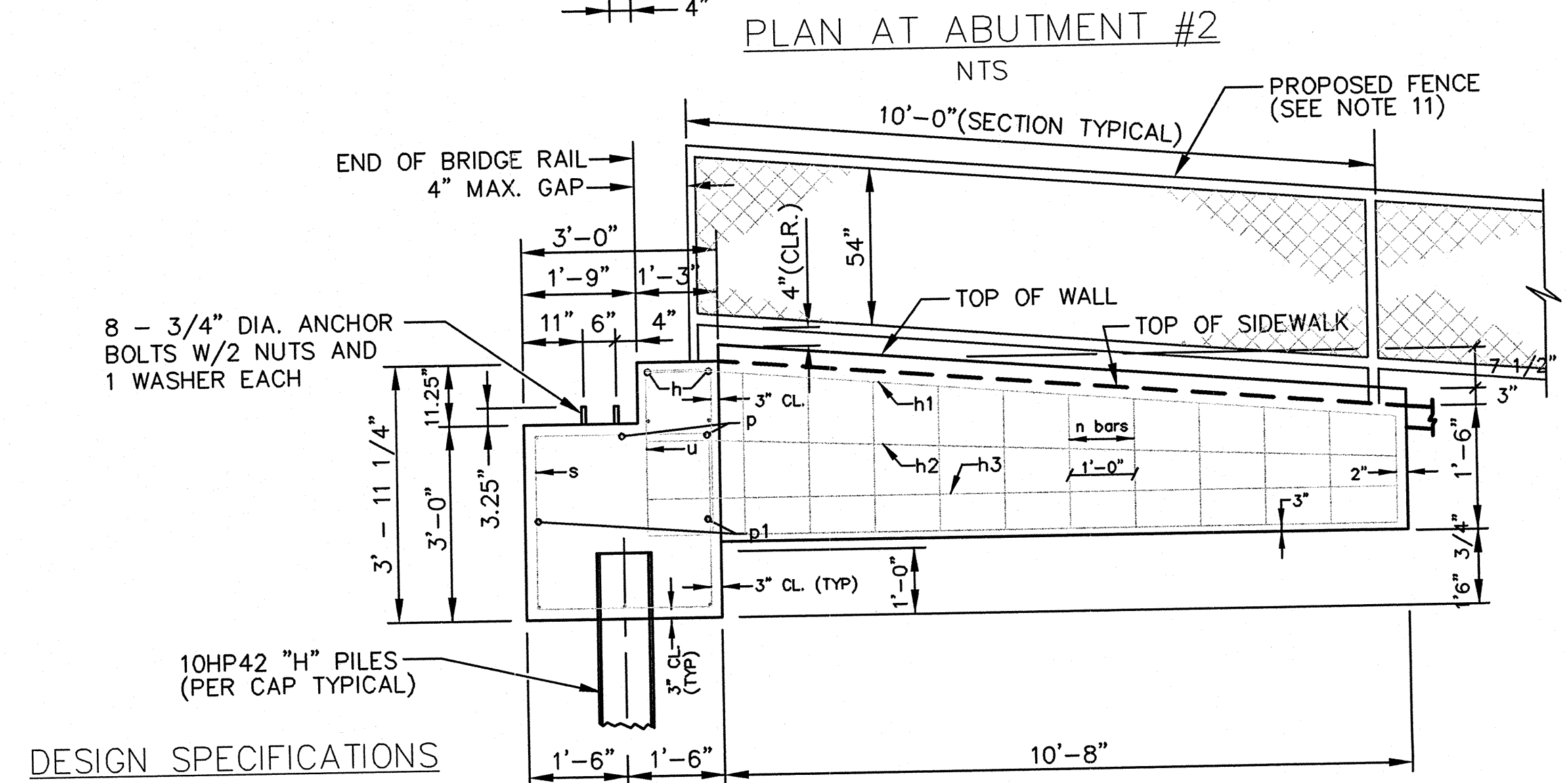
1997 AASHTO GUIDE SPECIFICATIONS FOR DESIGN OF PEDESTRIAN BRIDGES

GENERAL NOTES

- SEE SPECIAL PROVISIONS FOR BORING LOGS.
- ST. LOUIS COUNTY CLASS "B" CONCRETE SHALL BE USED THROUGHOUT.
- FASTENERS SHALL BE HIGH STRENGTH BOLTS. BOLTS 3/4"Ø, OPEN HOLES 13/16"Ø, UNLESS OTHERWISE NOTED.
- ALL STRUCTURAL STEEL SHALL BE AASHTO A588, EXCEPT EXPANSION JOINT ANGLES AND ATTACHED BARS SHALL BE AASHTO M 183. EXPANSION JOINT ANGLES AND ATTACHED BARS SHALL BE SHOP PAINTED WITH THE ZINC-SILICATE PRIMER.
- THE STRUCTURAL STEEL BEARING PLATES OF THE ELASTOMERIC BEARING ASSEMBLY SHALL CONFORM TO THE REQUIREMENTS OF AASHTO A588.
- FIELD WELDING OF CONSTRUCTION ACCESSORIES WILL BE PERMITTED ON THE TOP FLANGE OF BEAMS ONLY.
- THE CONTRACTOR SHALL DRIVE PILES, AS SPECIFIED, IN A PERMANENT LOCATION AS DIRECTED BY THE ENGINEER.
- REINFORCEMENT BARS SHALL CONFORM TO THE REQUIREMENTS OF AASHTO M 31 OR M 53 GRADE 60.
- SPACE REINFORCEMENT IN CAP TO MISS ANCHOR BOLTS.
- PEDESTRIAN BRIDGE SHOP DRAWINGS SHALL BE SUBMITTED TO ST. LOUIS COUNTY DEPARTMENT OF HIGHWAYS AND TRAFFIC FOR REVIEW AND APPROVAL.
- THE CHAIN LINK FENCE SHALL BE 54" HIGH AND 30'-0" LONG. THE POST ANCHORAGE THAT FALLS ON THE CONCRETE ABUTMENT AND WING WALLS SHALL CONFORM TO THE STANDARD DRAWING C607.12 ATTACHED TO SPECIFICATION 02890. THE REMAINING PORTION OF THE FENCE SHALL CONFORM TO STD. DRAWING C607.10 PRORATED TO 54" HEIGHT.



NOTE: WINGWALLS AT EAST ABUTMENT ONLY

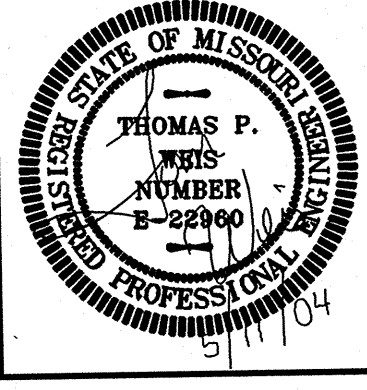


DESIGN SPECIFICATIONS

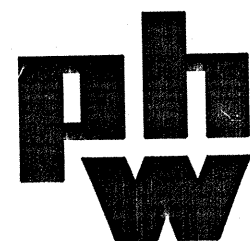
ACTUAL CALC. LOAD
LIVE LOAD - 85 PSF
VEHICLE LOAD - 5,000 LBS
f'c = 3500 psi
fy = 60,000 psi

REV	DATE	BY	APP.	DESCRIPTION
4	10/12/98	RKH		PER COMMENTS ST. LOUIS COUNTY DEPT OF HIGHWAYS & TRAFFIC
3	5/28/98	RKH		PER COMMENTS ST. LOUIS COUNTY DEPT OF HIGHWAYS & TRAFFIC
2	2/06/98	CMB		PER COMMENTS ST. LOUIS COUNTY DEPT OF HIGHWAYS & TRAFFIC
1	8/25/97	CMB		85% SUBMITTAL
0	4/14/97	CMB		60% SUBMITTAL

DESIGNED:	
EDITED:	KAC
CHECKED:	TPW
APP. BY:	TPW
DATE:	5/11/04



THE DRAWING ON THIS SHEET BEARING MY SEAL IS BASED UPON INFORMATION PROVIDED BY ZAMBRANA ENGINEERING, INC. AND WAS EDITED FOR CONSTRUCTION PURPOSES ONLY.



P. H. WEIS & ASSOCIATES, INC.
Engineers • Architects • Planners
410 Sovereign Court, Suite 11
St. Louis, Missouri 63011-4400
email: phwa@phweis.com

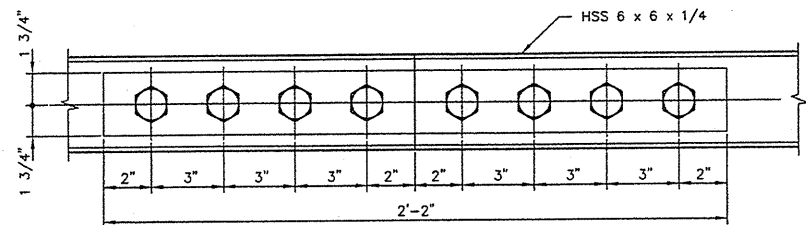
VANCE ROAD
PROPOSED PEDESTRIAN WALK
VALLEY PARK, MISSOURI
MSD P#25974-00, BASE MAP NO. 26 Q

PEDESTRIAN
BRIDGE
DETAILS

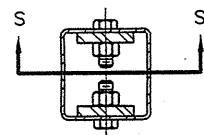
CONTRACT NO.	0006-03-4
DRAWING NO.	DETAIL2.DWG
SCALE:	NONE
SHEET NO.	13 OF 13

Color of bridge must be approved by St. Louis County and City of Valley Park before fabrication.

012005 Jobs2005135 Valley Park MO Vance Road Sidewalk Bridge 9566Engineering2005135.dwg, 6/24/2005 11:17:20 AM, christinea



TOP & BOTTOM FACE - AS SHOWN



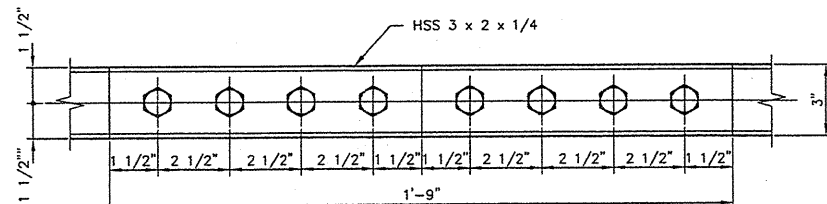
SECTION S-S

8 TOP CHORD SPLICE

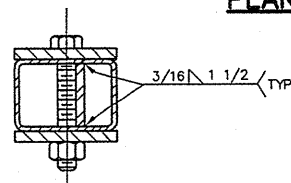
T6614TC8

MATERIAL PER SPLICE

- (16) 1"φ x 2 1/2" LG A325 BOLTS AND NUTS (TYPE 3)
- (2) 3 1/2" x 3/4" x 2'-2" ASTM A588 PLATES



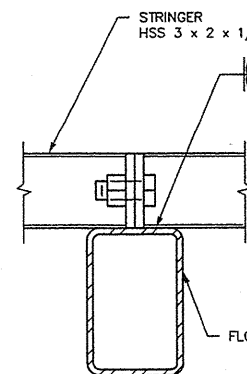
PLAN



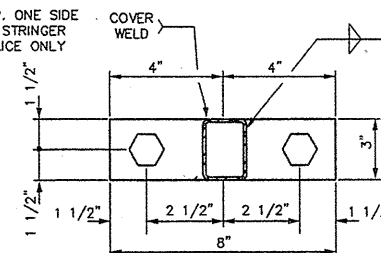
10 DIAGONAL SPLICE

MATERIAL PER SPLICE

- (8) 3/4"φ x 4" LONG A325 BOLTS AND NUTS (TYPE 3)
- (2) 3" x 3/8" x 1'-9" ASTM A588 PLATE
- (2) 1 9/16" x 3/8" x 10 1/2" ASTM A588 PLATE



SIDE ELEVATION



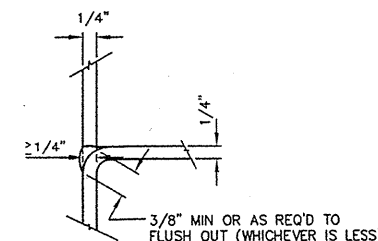
SECTION

MATERIAL (PER SPLICE)

- (2) 3/4"φ x 2" LONG A325 BOLTS AND NUTS (TYPE 3)
- (2) 3" x 3/8" x 8" ASTM A588 PLATES WITH (2) 13/16"φ HOLES

12 STRINGER SPLICE

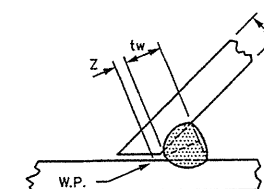
SHOP NOTE:
USE STRINGER SPLICE MATERIAL FOR CENTER NAILER AND PLANK SUPPORT SLICES.



- MATCHED EDGES OF:
1. VERTICALS TO BOTH CHORDS
2. END BAY COMPRESSION DIAGONAL TO END BAY TENSION DIAGONAL

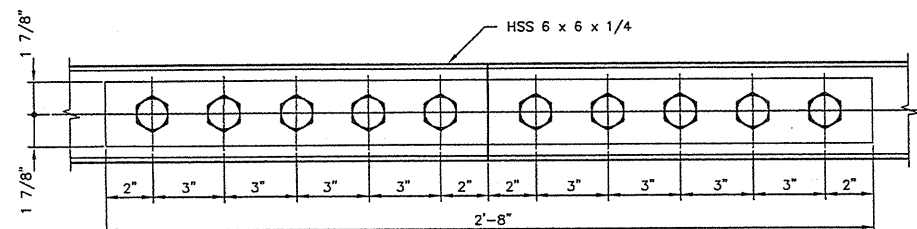
TO BE PARTIAL PENETRATION WELDS.

WELD DETAIL

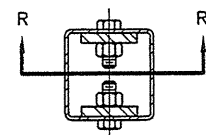


"Z" LOSS DIMENSION TO BE DETERMINED IN ACCORDANCE WITH AWS D1.1 - TABLE 2.8

WELD DETAIL



TOP & BOTTOM FACE - AS SHOWN



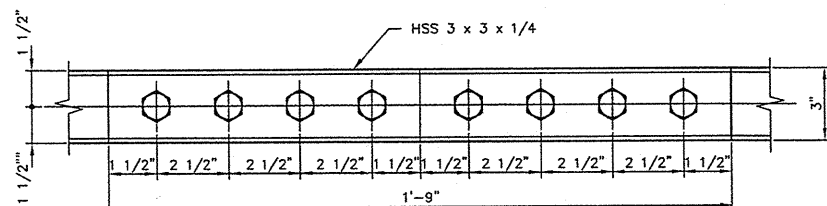
SECTION R-R

9 BOTTOM CHORD SPLICE

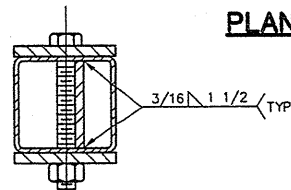
T6614BC10

MATERIAL PER SPLICE

- (20) 1"φ x 2 1/2" LG A325 BOLTS AND NUTS (TYPE 3)
- (2) 3 3/4" x 3/4" x 2'-8" ASTM A588 PLATES



PLAN

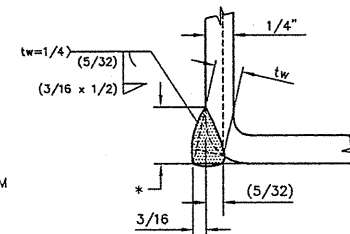


11 BRACE DIAGONAL SPLICE

MATERIAL PER SPLICE

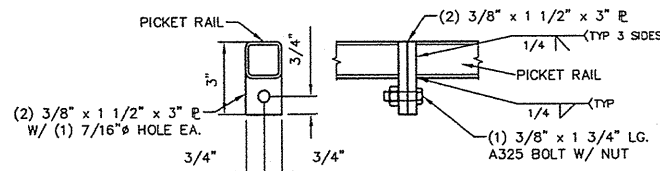
- (8) 3/4"φ x 5" LONG A325 BOLTS AND NUTS (TYPE 3)
- (2) 3" x 3/8" x 1'-9" ASTM A588 PLATE
- (2) 2 9/16" x 3/8" x 10 1/2" ASTM A588 PLATE

NOTE: IF THE OUTSIDE RADIUS OF THE TUBE IS LESS THAN 1.5 TIMES THE WALL THICKNESS, CONTACT THE ENGINEER FOR APPROPRIATE WELD MODIFICATIONS.

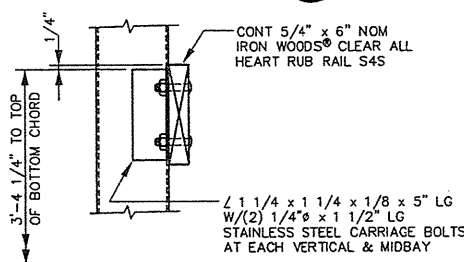


1/4" WALL THICKNESS
1/2" MINIMUM OR AS REQUIRED TO FLUSH OUT RADIUS, WHICHEVER IS GREATER

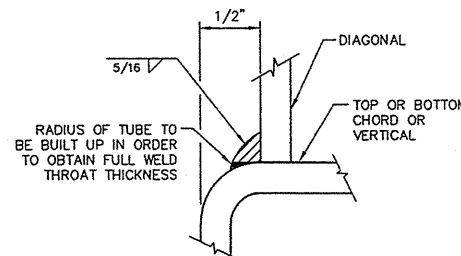
WELD DETAIL



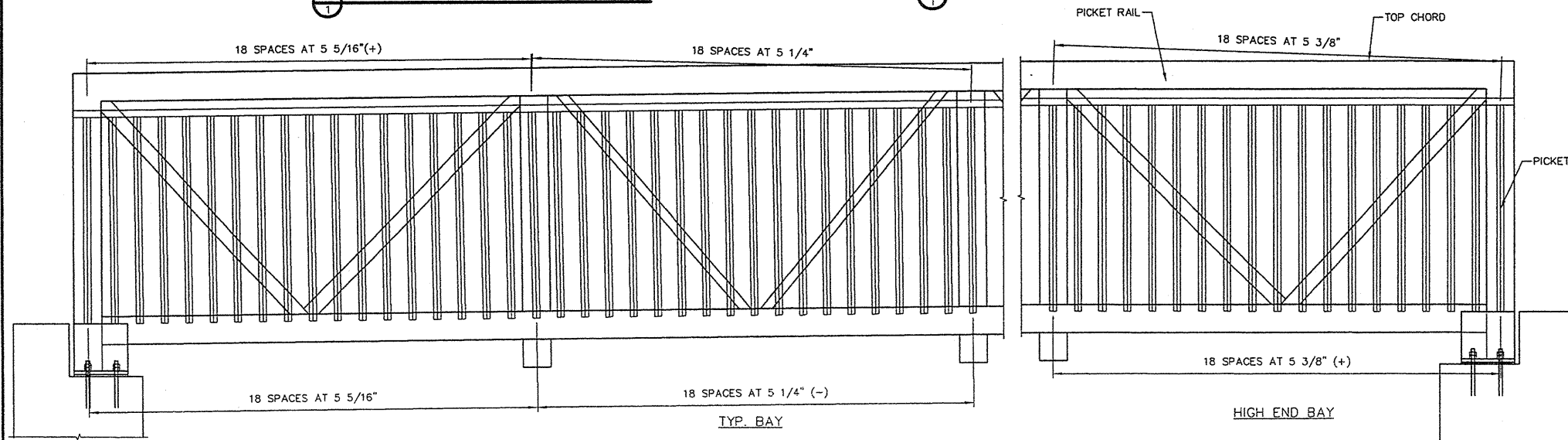
14 PICKET RAIL SPLICE DETAIL



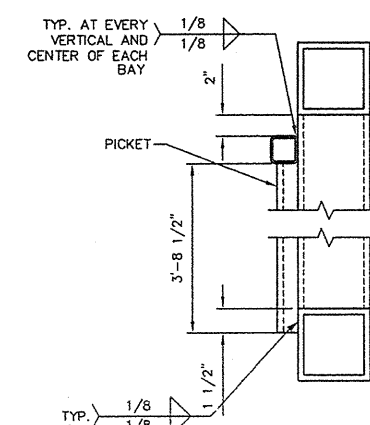
6 RUB RAIL DETAIL



WELD DETAIL



PICKET LAYOUT



PICKET ATTACHMENT DETAIL

**CONTINENTAL
BRIDGE**

ALEXANDRIA MN 320-852-7500

THESE PLANS, AS INSTRUMENTS OF SERVICE ARE PROPERTY SOLELY OF CONTINENTAL BRIDGE. THEY ARE NOT TO BE REPRODUCED FOR ANY PURPOSE OR USED IN ANY OTHER LOCATION WITHOUT WRITTEN AUTHORIZATION.

REV. BY:	DATE:	LEVEL:	REVISION:

95'-0" x 6'-0"
VANCE ROAD SIDEWALK
PEDESTRIAN BRIDGE
VALLEY PARK, MO

STATE OF MISSOURI
STEVEN E. CHELL
NUMBER
PE-2005010794
PROFESSIONAL ENGINEER

I HEREBY CERTIFY THAT THIS PLAN WAS PREPARED BY ME OR UNDER MY DIRECT SUPERVISION AND THAT I AM A DULY REGISTERED PROFESSIONAL ENGINEER UNDER THE LAWS OF THE STATE OF MISSOURI.
DATE: 6/24/05
REG. NO. 2005010794

DESIGNED BY:	DRAWN BY:	CHECKED BY:	APPROVED BY:
SEC	CMA	SEC	SEC
DATE: 6/23/05	SHEET NO. 2 OF 2	JOB # 2005135	