



## ADDENDUM NUMBER 1

Project Number: 89008153 – STP-3451(403)

Project Title: Old Tiffany Springs Road and Donovan Drive

ISSUE DATE: **MARCH 28, 2018**

Bidders are hereby notified that the Bidding and Contract Documents for the above project, for which Bids are to be received on **April 10, 2018**, are amended as follows:

Information to Bidders The following is provided to Bidders for information only:

Q1.	We don't see where there is going to be a prebid meeting – is that accurate?
A1.	<b>There is currently no pre-bid meeting required for this project.</b>
Q2.	We don't see a specific start date for the project – is that accurate?
A2.	<b>Construction Start date will be determined after the bid opening in order to allow adequate time for the City to completed the required items prior to awarding the contract.</b>
Q3.	Is there an excel version of the unit prices available?
A3.	<b>The unit prices are available in electronic format on the website.</b>
Q4.	The quantity for bid items 66 & 67 is each. I don't think that is appropriate.
A4.	<b>The unit shown was incorrect on the unit price list – it should be square yards. Updated version of section 00412 included with this Addendum.</b>
Q5.	Plan sheet 16 shows tree clearing in numerous locations, but the JSP states there is no tree clearing.
A5.	<b>Tree clearing is allowed on the project, but certain trees have seasonal limitation. Revised version of JSP D – Tree Clearing is included with this Addendum.</b>
Q6.	Traffic control shown to construct Pier 3 located in the median of I-29 includes temporary traffic barrier with 2 lanes of traffic both northbound and southbound. However, no allowance for temporarily dropping one additional lane of traffic is shown in the documents. Are we allowed to do this? If so, what hours are permitted.
A6.	<b>MoDOT requested 2 lanes be maintained on I-29. Current layout provides 32' between barriers, which should be enough space to complete the work. If additional lane closures are needed, this would need to be coordinated with MoDOT during construction.</b>

## Contracting Requirements

1. Delete and replace the following section(s):
  - a. Delete Document, 00412 Unit Prices and replace with the following Document, 00412 Unit Prices included in this Addendum.
  - b. Delete Document, JSP D - Tree Clearing and replace with the following Document, JSP D - Tree Clearing included in this Addendum.

**NOTE: Bidders must acknowledge receipt of this Addendum by listing the number and date, where provided, on the Bid Form - Document 00410.**



## UNIT PRICES

Project Number 89008153

Project Title Old Tiffany Springs Road and Donovan Drive

Item No.	Unit	Quantity	Item Description	Unit Price	Extension
1	L.S.	1	Mobilization		
2	L.S.	1	Contractor Furnished Surveying & Staking		
3	LS	1	Clearing & Grubbing		
4	LS	1	Removal of Improvements (Demolition)		
5	C.Y.	55,630	Excavation		
6	C.Y.	75,674	Embankment		
7	C.Y.	22,044	Borrow		
8	S.Y.	22,843	Type 5-01 Surface Asphalt (2")		
9	S.Y.	799	Type 1-01 Surface Asphalt (3")		
10	S.Y.	2,922	Type 1-01 Surface Asphalt (5")		
11	S.Y.	6,047	Type 1-01 Surface Asphalt (7")		
12	S.Y.	14,923	Type 1-01 Surface Asphalt (9")		
13	S.Y.	25,123	Untreated Compacted Aggregate		
14	S.Y.	522	9.5" Concrete Pavement		
15	S.Y.	140	8" Concrete Pavement		
16	S.Y.	590	Type A2 Shoulder		
17	S.Y.	1,252	4" Type 1 Aggregate Base		
18	STA.	7.3	Portland Cement Concrete Shoulder Rumble Strip		
19	L.F.	5,848	Concrete Curb & Gutter (CG-1)		
20	L.F.	5,626	Modified Concrete Curb & Gutter (CG-1 Dry)		
21	L.F.	644	Concrete Curb (C-1)		
22	S.F.	1,300	4" Concrete Median		
23	S.Y.	5,744	8" Concrete Driveways		
24	S.F.	24,735	6" Concrete Trail		
25	L.F.	166	10'x10' RCB Pedestrian Box w/ Headwalls/Wingwalls		
26	L.F.	1,067	Round Rail Wood Fence		
27	L.F.	246	42" Black Vinyl Coated Chain Link Fence		
28	L.F.	2,012	60" Black Vinyl Coated Chain Link Fence		
29	S.F.	24,728	4" Concrete Sidewalk		
30	S.F.	826	Concrete Curb Ramp		
31	S.F.	120	Truncated Domes		
32	S.Y.	1,873	Milling (Cold Milling)		
33	L.F.	697	Temporary Shoring		
34	L.F.	442	Type A Concrete Barrier		
35	L.F.	210	Type D Concrete Barrier		
36	EA.	1	MGS Transition Section		
37	L.F.	473	MGS Guardrail		
38	EA.	4	Type A Crashworthy End Terminal (MASH)		
39	EA.	2	MGS End Anchor		
40	EA.	13	Std. Type I Curb Inlet (5'x3' Inside)		
41	EA.	3	Std. Type I Curb Inlet (5'x4' Inside)		
42	EA.	1	Std. Type I Curb Inlet (5'x5' Inside)		

Item No.	Unit	Quantity	Item Description	Unit Price	Extension
43	EA.	1	Std. Type I Curb Inlet (8'x3' Inside)		
44	EA.	1	Std. Type I Curb Inlet (8'x4' Inside)		
45	EA.	1	Std. Manhole (5' Dia.)		
46	EA.	1	Std. Junction Box (5'x3' Inside)		
47	EA.	1	Std. Junction Box (6'x6' Inside)		
48	L.F.	1	Std. Junction Box (8'x4' Inside)		
49	L.F.	1	Basin Outlet Structure (4'x4' Inside)		
50	L.F.	1	Std. Field Inlet (5'x5' Inside)		
51	L.F.	1	Convert Ex. Field Inlet to Junction Box (6.5'x4')		
52	L.F.	1972	15" RCP (Class III, Wall B)		
53	L.F.	303	18" RCP (Class III, Wall B)		
54	L.F.	1027	24" RCP (Class III, Wall B)		
55	L.F.	40	54" RCP (Class III, Wall B)		
56	L.F.	55	60" RCP (Class III, Wall B)		
57	L.F.	236	36" RCP (Class V)		
58	L.F.	136	HDPE Lining		
59	EA.	3	18" RCP End Section		
60	EA.	1	24" RCP End Section		
61	EA.	1	36" RCP End Section		
62	EA.	1	54" CMP End Section		
63	EA.	1	60" CMP End Section		
64	EA.	2	18" Pipe Collar		
65	L.F.	1	Connection to Existing Structure		
66	S.Y.	30	Rip-rap (UngROUTED 10")		
67	S.Y.	111	Rip-rap (UngROUTED 14")		
68	L.F.	6,031	Silt Fence		
69	L.F.	863	Temporary Diversion Berm		
70	C.Y.	167	Inlet Protection		
71	C.Y.	42	Rock Check Dam		
72	C.Y.	57	Temporary Construction Entrance		
73	AC.	8.0	Seeding		
74	AC.	1.8	Sod		
75	TON	19.6	Lime		
76	LB.	7,840	Fertilizer		
77	TON	13.5	Mulch		
78	EA	4	IMPACT ATTENUATOR (19 SAND BARRELS)		
79	EA	8	REPLACEMENT SAND BARREL		
80	EA	2	TRUCK OR TRAILER MOUNTED ATTENUATOR (TMA)		
81	S.F.	1,395	CONSTRUCTION SIGNS		
82	EA	20	ADVANCED WARNING RAIL SYSTEM		
83	EA	12	FLAG ASSEMBLY		
84	S.F.	691	RELOCATED SIGNS		
85	EA	258	CHANNELIZER (TRIM LINE)		
86	EA	45	TYPE III MOVEABLE BARRICADE		
87	EA	56	DIRECTIONAL INDICATOR BARRICADE		
88	EA	7	FLASHING ARROW PANEL		
89	EA	6	WARNING LIGHT, TYPE A		
90	EA	56	SEQUENTIAL FLASHING WARNING LIGHT		

Item No.	Unit	Quantity	Item Description	Unit Price	Extension
91	EA	14	CHANGEABLE MESSAGE SIGN WITHOUT COMMUNICATION INTERFACE, CONTRACTOR		
92	EA	2	ADA-COMPLIANT TYPE II BARRICADE		
93	LF	1,473	TEMPORARY TRAFFIC BARRIER, CONTRACTOR FURNISHED/RETAINED		
94	LF	1,135	RELOCATING TEMPORARY TRAFFIC BARRIER		
95	LF	30	TYPE 2 PREFORMED MARKING TAPE (GROOVED), 24 IN., WHITE		
96	EA	13	TYPE 2 PREFORMED MARKING TAPE (GROOVED), LEFT/RIGHT ARROW		
97	LF	7,790	PREFORMED REMOVABLE MARKING TAPE 4 IN., WHITE		
98	LF	6,303	PREFORMED REMOVABLE MARKING TAPE 4 IN., YELLOW		
99	LF	8,187	6 IN. WHITE HIGH BUILD WATERBORNE PAVEMENT MARKING PAINT, TYPE L BEADS		
100	LF	2,436	6 IN. YELLOW HIGH BUILD WATERBORNE PAVEMENT MARKING PAINT, TYPE L BEADS		
101	LF	1,972	12 IN. WHITE HIGH BUILD WATERBORNE PAVEMENT MARKING PAINT, TYPE L BEADS		
102	LF	800	4 IN. YELLOW HIGH BUILD WATERBORNE PAVEMENT MARKING PAINT, TYPE L BEADS		
103	SF	111	SH-FLAT SHEET SIGNING		
104	SF	493	ST-STRUCTURAL SIGNING		
105	EA	9	SIGN POSTS		
106	EA	1	HIGHWAY SIGN TRUSS (25.0' CANTILEVER)		
107	EA	1	HIGHWAY SIGN TRUSS (76.0')		
108	CUYD	44	CONCRETE FOOTINGS, BOLT DOWN		
109	EA	22	TYPE 'A' LED LIGHT FIXTURE AND LAMP		
110	EA	22	TYPE 'A' POLE (35'-0)		
111	EA	4	TYPE 'AB' LED LIGHT FIXTURE AND LAMP ON THE BRIDGE		
112	EA	4	TYPE 'AB' POLE (35'-0) ON THE		
113	EA	12	TYPE 'B' AND 'B1' LED LIGHT FIXTURE		
114	EA	6	TYPE 'B' and 'B1' POLE (35'-0)		
115	EA	10	TYPE 'C' LED LIGHT FIXTURE		
116	EA	10	TYPE 'C' POLE (35'-0)		
117	EA	36	Mast Arm (6'-0")		
118	EA	7	Mast Arm (8'-0")		
119	EA	5	Mast Arm (10'-0")		
120	LF	4,900	1#10 RHW/USE Internal Pole		
121	LF	4,650	2#6 RHH/RHW?USE, 1 #6 CU GND, 2" CID		
122	LF	1,100	2#8 RHH/RHW?USE, 1 #8 CU GND, 2" CID		
123	LF	400	3" HDPE CONDUIT		
124	LF	400	1#6 BARE WIRE		
125	EA	4	4 CIRCUIT LIGHTING CONTROLLER		
126	EA	4	GROUND ROD		
127	EA	96	FUSE KITS		
128	EA	48	NON FUSED FUSED KITS		
129	EA	42	CABLE RETAINER		
130	EA	4	PULL BOX		
131	EA	38	LIGHTING SCREW IN POLE BASE		

Item No.	Unit	Quantity	Item Description	Unit Price	Extension
132	EA	52	ID TAGS		
133	EA	4	CONCRETE FOUNDATION FOR LIGHTING CONTROLLER		
134	EA	4	KCPL SERVICE		
135	LF	5,750	TRENCH AND BACKFILL		
136	EA	4	POWER FOR KCPL Power sources		
137	EA	16	ANCHOR BOLTS FOR LIGHT POLES ON THE BRIDGE		
138	EA	5	REMOVAL OF STREET LIGHT POLES ON NW AVION STREET		
139	C.Y.	405	Class 1 Excavation		
140	L.S.	1	Removal of Existing Bridge & Wall (A1794)		
141	S.Y.	329	Bridge Approach Slab (Minor Road)		
142	L.F.	751	Pedestrian Fence (Structures)		
143	L.F.	336	Pedestrian Handrail (Structures)		
144	L.F.	6,492	Structural Steel Piles (12 in.)		
145	EA.	4	Dynamic Pile Testing		
146	EA.	84	Pile Point Reinforcement		
147	C.Y.	438.7	Class B Concrete (Substructure)		
148	L.F.	755	Safety Barrier Curb		
149	S.Y.	2,876	Slab On Concrete NU-Girder		
150	L.F.	3,011	NU 63, Prestressed Concrete NU-Girder		
151	LB.	32,630	Reinforcing Steel (Bridges)		
152	LB.	16,050	Reinforcing Steel (Epoxy Coated)		
153	L.F.	1,360	Conduit System on Structure		
154	EA.	40	Steel Intermediate Diaphragm for P/S Concrete Girders		
155	EA.	2	Vertical Drain At End Bents		
156	EA.	27	Laminated Neoprene Bearing Pad		
157	EA.	27	Laminated Neoprene Bearing Pad (Tapered)		
158	EA.	24	Corrugated Metal Pipe Pile Spacers		
159	S.F.	15,645	MSE Wall System		
160	L.F.	185	Modified Type A Gutter		
161	S.F.	15,645	Sacrificial Graffiti Protection		
162	S.F.	15,645	Concrete & Masonry Protection		
163	CY	21	Furnishing Type 2 Rock Blanket		
164	CY	21	Placing Type 2 Rock Blanket		
165	SY	1,738	Form Liners		
166	LF	1,013	12" CL 52 DIP W/ Double Polywrap Water main		
167	LF	1,048	12" CL 52 DIP W/ Polywrap Water main		
168	LF	20	8" CL 52 DIP W/ Double Polywrap Water main		
169	LF	575	8" CL 52 DIP W/ Polywrap Water main		
170	EA	1	12" X 12" Tee		
171	EA	1	12" X 8" Tee		
172	EA	1	8" X 8" Tee		
173	EA	1	MJ Plug		
174	EA	1	Temporary Plug		
175	EA	1	Air Release Valve		
176	EA	6	12" Gate valve		
177	EA	4	8" Gate Valve		
178	EA	5	12" Solid Sleeve		
179	EA	11	8" Solid Sleeve		
180	EA	2	12" 90 degree bend		

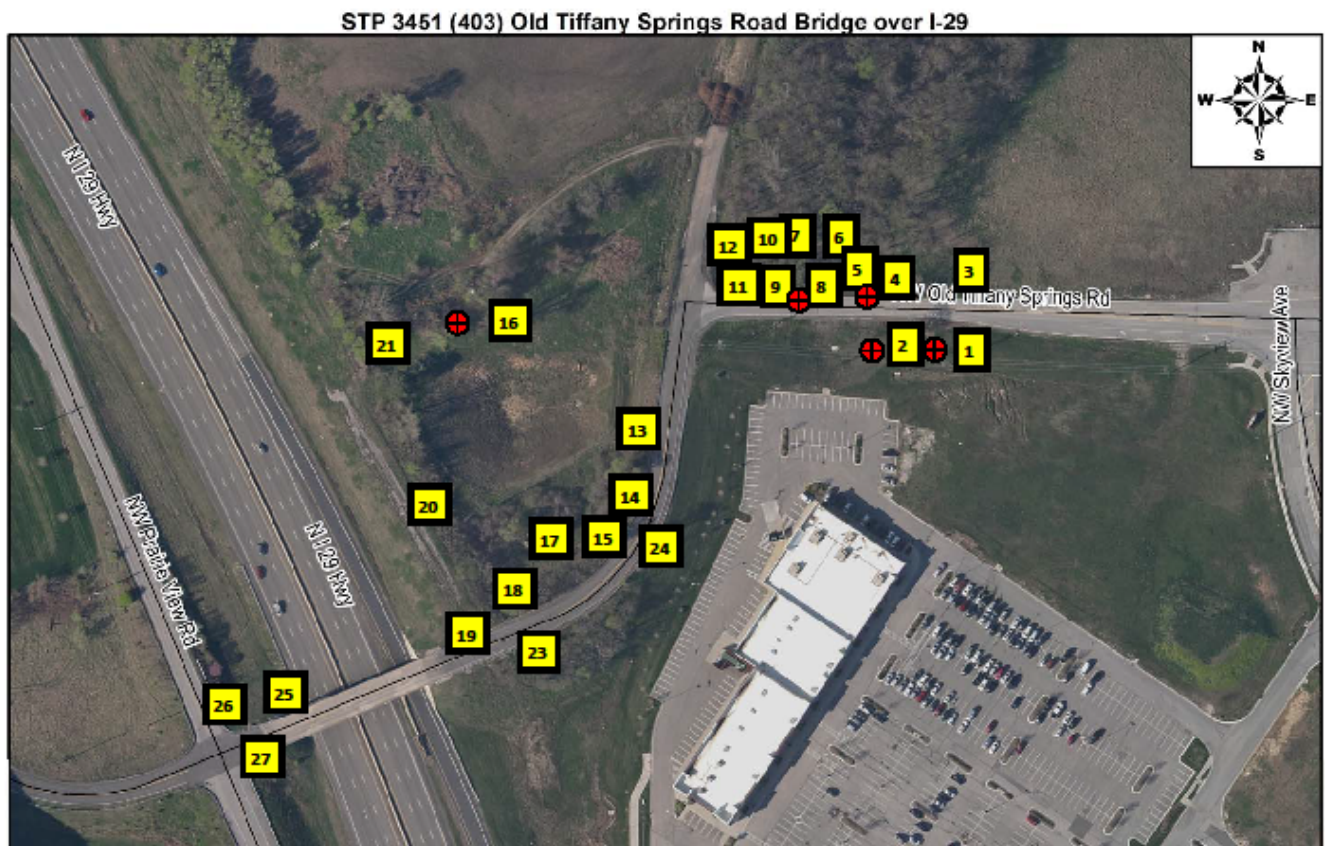
Bidder: \_\_\_\_\_  
 Federal Job # STP 3451 (403)

Item No.	Unit	Quantity	Item Description	Unit Price	Extension
181	EA	6	12" 45 degree bend		
182	EA	1	12" 22.5 degree bend		
183	EA	15	8" 45 degree bend		
184	EA	10	Fire hydrant Assembly, Fittings, & installation		
185	EA	3	Fire Hydrant Removal		
186	EA	7	Concrete backing block		
187	EA	6	Temporary Flushing Assembly		
188	EA	15	Straddle block		
189	EA	5	Cut & Plug Exist. Water Main		
190	EA	2	Steel gas main crossing		
			<b>TOTAL UNIT PRICES: (last page only)</b>		

## D. TREE CLEARING RESTRICTION JSP-07-05

**1.0 Description.** The project is within the known breeding range of the federally endangered Indiana bat and federally threatened northern long-eared bat. Female Indiana bats and northern long-eared bats form maternity colonies and raise their young during the summer months. These maternity colonies roost in trees. It has been determined that suitable roost trees exist within the project area. The following exhibit indicates which trees can NOT be removed during the bat's breeding season which is between April 1 and October 31. These trees are marked with a red circle and can only be removed between November 1 and March 31. Any other trees within the project limits may be removed at any time as required for construction.

**2.0 Basis of Payment.** No direct pay shall be provided for any labor, equipment, time, or materials necessary to complete this work. The contractor shall have no claim, or basis for any claim or suit whatsoever, resulting from compliance with this provision.



Tree in picture 17 is outside of the project limits but marked for informational purposes.

Trees in pictures 1, 2, 4, 8, 16 are potential habitat location needing removal during non-nesting season.

Trees identified for removal are shown with the red circles.

**END SECTION**