

---

**ADDENDUM NUMBER ONE**

**DATE:** May 14, 2018

**OWNER:** Crystal City, Missouri  
130 Mississippi Avenue  
Crystal City, Missouri 63019

**SUBJECT:** Addendum Number One to  
Park Street and Virginia Avenue Improvements  
Federal Project No. STP-5403(669)  
Cochran Project No. SC15-499

---

This Addendum forms a part of the Bidding and Contract Documents and modifies the original Bidding Documents. **FAILURE TO ACKNOWLEDGE RECEIPT OF ADDENDUM MAY SUBJECT BIDDER TO DISQUALIFICATION.**

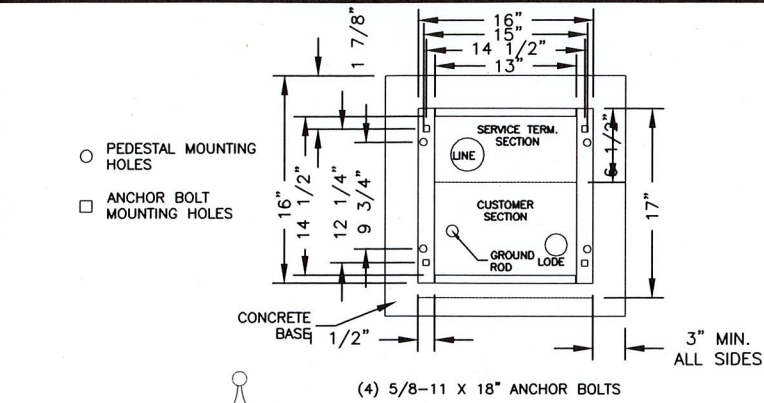
---

**ITEM:**

1. ADD: To the Plans, the enclosed Lighting Details plan sheet LD-1.

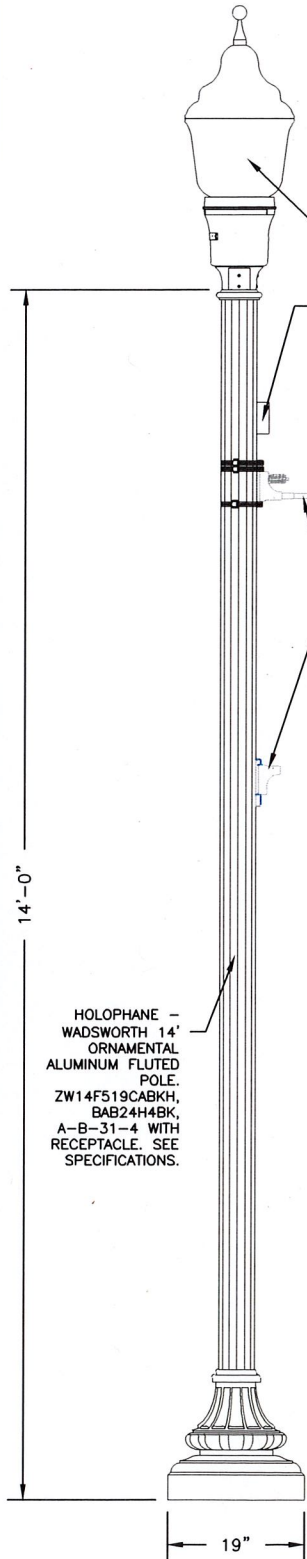
**ATTACHMENTS:** Plan Sheet LD-1

**END ADDENDUM NO. 1**

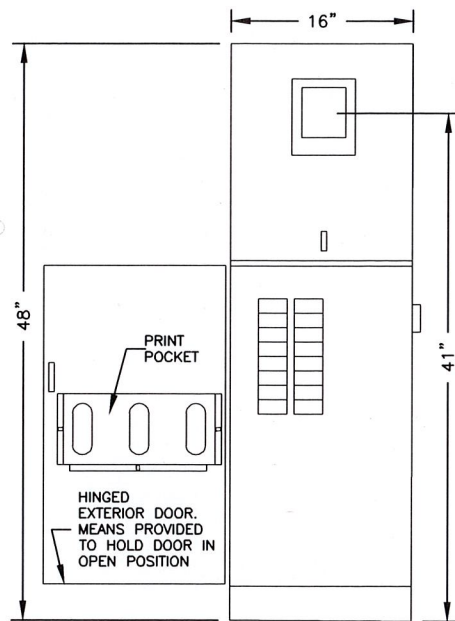


MOUNTING BASE DETAIL

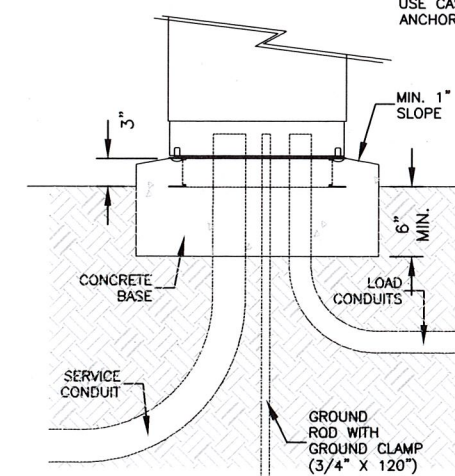
HOPOPHANE -  
GRANVILLE  
DECORATIVE POST  
TOP 150 WATT MH  
LUMINAIRE,  
GV15DMHMTSB3NBBP27,  
S67508. SEE  
SPECIFICATIONS.



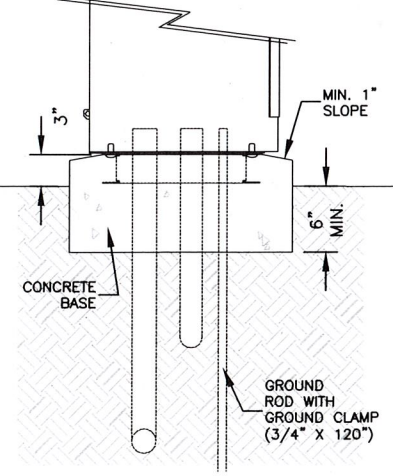
STREET LIGHT DETAIL  
NOT TO SCALE



FRONT VIEW

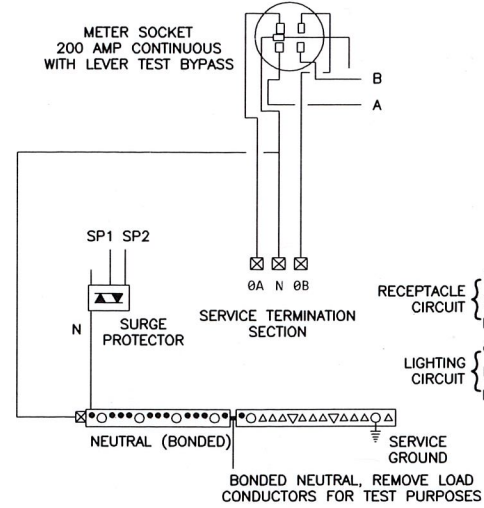


SIDE VIEW

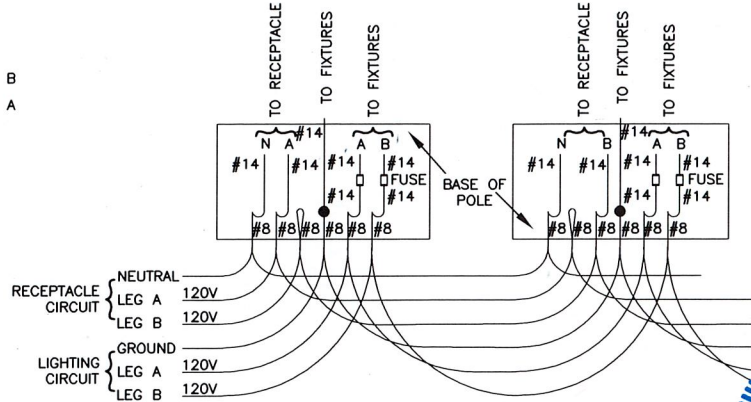


LOAD CENTER  
NO SCALE

POWER SUPPLY WIRING DIAGRAM  
NO SCALE

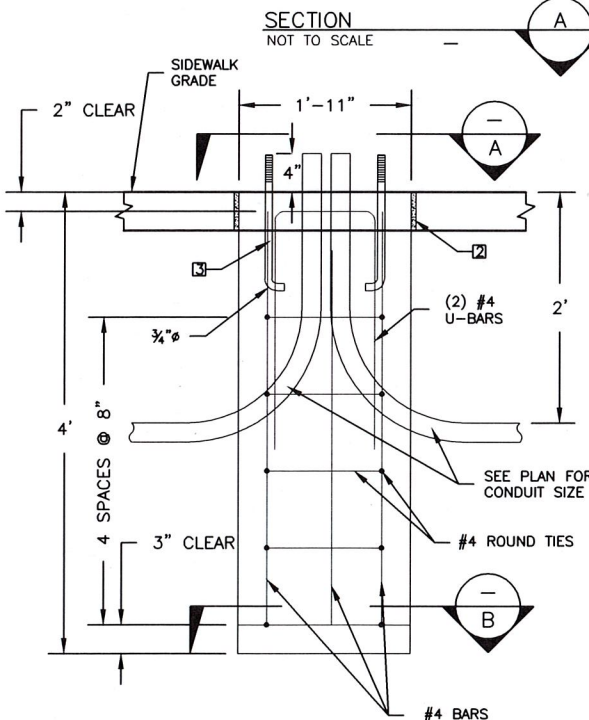


TYPICAL POLE WIRING DIAGRAM

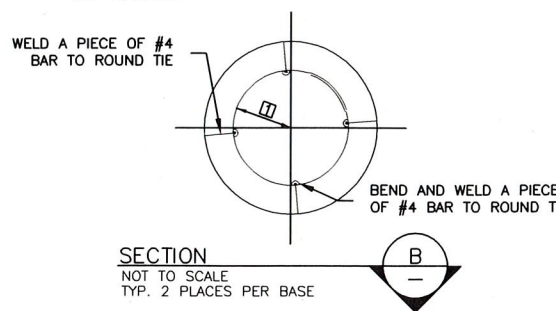


KEYED NOTES

- 1 RADIUS TO INSIDE OF ROUND TIE IS 6".
- 2 1/2" X 4" NON-GASING EXPANSION JOINT.
- 4 - LIGHT POLE MANUFACTURER SUPPLIED GALVANIZED STEEL ANCHOR BOLTS.



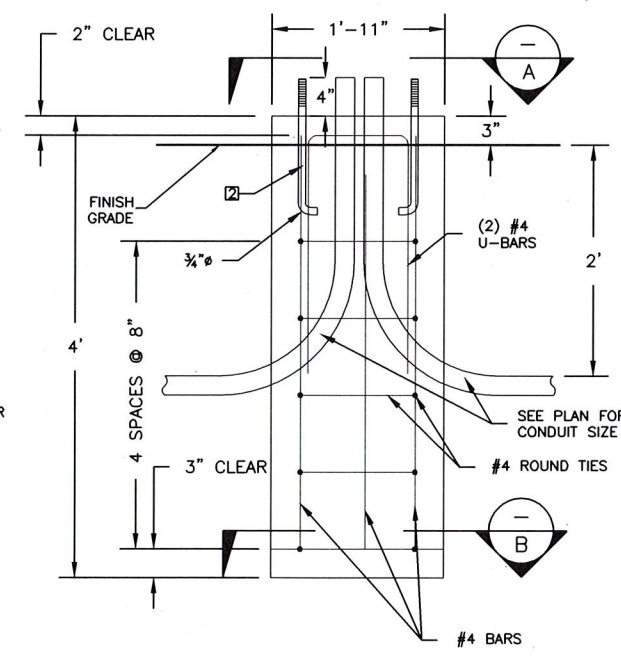
CROSS SECTION OF CONCRETE  
STREETLIGHT BASE IN SIDEWALK  
NOT TO SCALE



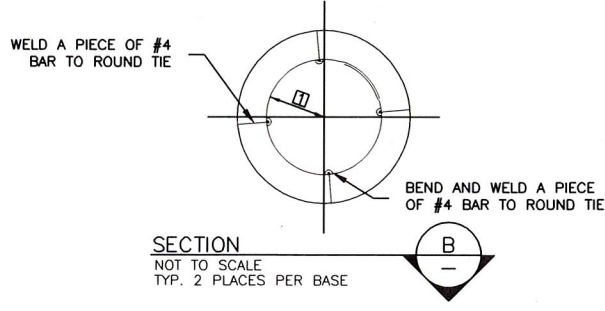
SECTION  
NOT TO SCALE  
TYP. 2 PLACES PER BASE

KEYED NOTES

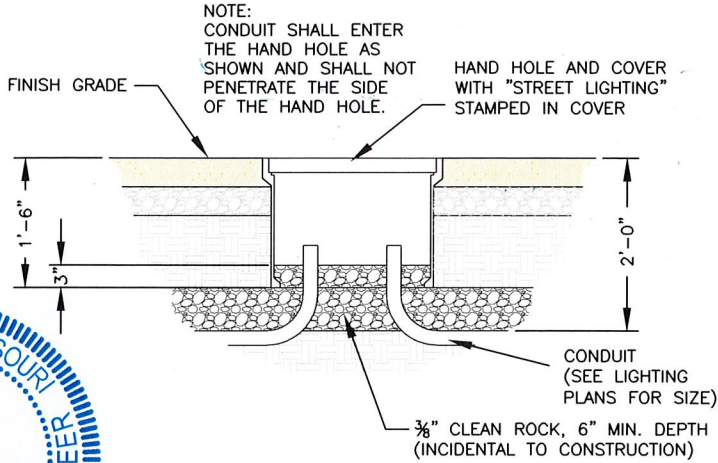
- 1 RADIUS TO INSIDE OF ROUND TIE IS 6".
- 2 4 - LIGHT POLE MANUFACTURER SUPPLIED GALVANIZED STEEL ANCHOR BOLTS.



CROSS SECTION OF CONCRETE  
STREETLIGHT BASE IN TREE LAWN  
NOT TO SCALE



SECTION  
NOT TO SCALE  
TYP. 2 PLACES PER BASE



PREFORMED HAND HOLE DETAIL  
NO SCALE

