

**Addendum 1**  
**Roadway Improvements Jeffco Boulevard & Tenbrook Road**  
**Arnold, MO**  
**Federal Job # CMAQ-5403 (668)**

Date: May 29, 2018

To: Prospective Bidders

Owner: City of Arnold  
Department of Public Works  
2101 Jeffco Boulevard, Arnold, MO 63010

Engineer: Brian Courtwright, P.E.  
CBB  
340 Regency Centre  
Collinsville, IL 62234

This Addendum forms a part of the Bidding and Contract Documents and modifies the originals. FAILURE TO ACKNOWLEDGE RECEIPT OF ADDENDUM MAY SUBJECT BIDDER TO DISQUALIFICATION.

The purpose of this addendum is to make the following clarifications and revisions to the bid documents. This addendum provides clarifications/revisions to:

- Clarification on Material Testing;
- Bid Tab Format;
- Correction to Epoxy Coated Tie Bar (Drilled and Installed) Pay Item;
- Spelling Correction on SOQ;
- Clarification on material and type of curb to be used on Fox School Parking Lot.

- 
1. The City is responsible for material testing; however, the Contractor is encouraged to perform their own material QA/QC with no additional compensations.
  2. The BID FORM dated 12/13/17 located in the BID BOOK shall be removed in its entirety and replaced with the revised BID FORM dated 5/29/18. To clarify, the Contractor shall provide their unit cost which should be multiplied by the appropriate funding source (CMAQ Funding or 100% City Funding) and placed in the corresponding columns. These two costs should be combined and summarized in the "Total Costs" column. The "BASE BID ESTIMATE" shall be the summation of all costs without the CCTV Camera Assembly alternative bid item, and the "BASE BID + ALT BID ESTIMATE" shall be the "BASE BID ESTIMATE" plus the CCTV Camera Assembly alternative bid item.
  3. The duplicate "710-10.10 EPOXY COATED TIE BARS (DIRLLED AND INSTALLED)" was removed from the Summary of Quantities in the plans and the BID FORM.
  4. Spelling of "Drainage" corrected on the SOQ.
  5. Inconsistency between the plan, typical section and quantities for the type of pavement and curb to be used in the Fox School Parking Lot. To clarify, the Fox School Parking Lot should be reconstructed with "6" ASPHALT DRIVEWAY PAVEMENT W/ 2" BP-1 & TYPE S CURB".

## ATTACHMENTS

- Revised BID FORM;
- Revised Plan Sheet 3 Summary of Quantities.
- Revised Plan Sheet 4 Schedule of Quantities.
- Revised Plan Sheet 8 Typical Section
- Revised Plan Sheet 10-11 Plan and Profile



SUMMARY OF QUANTITIES

BID FORM

SUMMARY OF QUANTITIES			BID FORM						
ITEM NUM.	ITEM DESCRIPTION	UNIT	TOTAL QUANTITY	CMAQ FUNDING	100% CITY FUNDING	Unit Cost	CMAQ FUNDING Costs	100% CITY FUNDING Costs	TOTAL Costs
<b>ROADWAY ITEMS</b>									
202-20.10	REMOVAL OF IMPROVEMENTS	L. SUM	1	1					
202-99.02a *	EX UTILITY MANHOLE (ATG)	EA	3	2	1				
202-99.02b *	EX BUSINESS SIGN (TBR&R)	EA	1	1					
202-99.02c *	EX WATER VALVE (ATG)	EA	1	1					
202-99.02d *	EX MAILBOX (TBR&R)	EA	1	1					
202-99.03 *	FENCE (TBR)	FT	20	20					
203-10.00	CLASS A EXCAVATION	CUYD	539.3	479.2	60.1				
203-60.00	COMPACTING EXCAVATION	CUYD	296.2	255.4	40.8				
304-05.04	TYPE 5 AGGREGATE FOR BASE (4 IN. THICK)	SQYD	1721	1513	208				
310-10.03	GRAVEL (A)	SQYD	63	63					
401-12.09	BITUMINOUS PAVEMENT MIXTURE PG64-22 (BP-1)	TONS	869	820	49				
401-30.00	BITUMINOUS PAVEMENT MIXTURE PG64-22 (BASE)	TONS	265.2	254.6	10.6				
407-10.05	TACK COAT	GAL	300	264	36				
502-11.06	CONCRETE PAVEMENT (6 IN. NON-REINF)	SQYD	99	99					
502-11.08	CONCRETE PAVEMENT (8 IN. NON-REINF)	SQYD	804	677	127				
608-30.06	6 IN. CONCRETE MEDIAN STRIP	SQYD	59	59					
608-50.08	PAVED APPROACH, 8 IN	SQYD	368	368					
609-20.12	CONCRETE CURB (6 IN. HEIGHT AND UNDER) TYPE S	LF	337	224	113				
609-20.11	INTEGRAL CURB (6 IN. HEIGHT AND UNDER) TYPE A	LF	116	116					
609-20.12	INTEGRAL CURB (6 IN. HEIGHT AND UNDER) TYPE B	LF	493	384	109				
616-10.05	CONSTRUCTION SIGNS	SQ FT	122.25	122.3					
616-10.10	RELOCATE SIGNS	SQ FT	160	160					
616-10.28	CHANNELIZER	EA	25	25					
616-10.33	DIRECTIONAL INDICATOR BARRICADE	EA	6	6					
616-99.01 *	MAINTENANCE OF TRAFFIC CONTROL ITEMS	LS	1	1					
616-99.02 *	RELOCATE CHANNELIZER	EA	42	42					
616-99.02 *	RELOCATE DIRECTIONAL INDICATOR BARRICADE	EA	11	11					
617-20.01 *	CONCRETE TRAFFIC BARRIER, TYPE B (MODIFIED)	LF	209	209					
618-10.00	MOBILIZATION	LS	1	0.88	0.12				
619-10.00	PAVEMENT EDGE TREATMENT	LF	1600	1373	227				
622-10.01	COLDMILLING BITUMINOUS PAVEMENT FOR REMOVAL OF SURFACING (LESS THAN 3 IN. THICK)	SQ YD	1372	874	498				
627-40.00	CONTRACTOR FURNISHED SURVEYING AND STAKING	LS	1	0.88	0.12				
710-10.10	EPOXY COATED TIE BARS (DRILLED AND INSTALLED)	LBS	1670	1433	237				
803-10.00A	TURF TYPE TALL FESCUE SODDING	SQ YDS	734	665	69				
805-20.00A	SEEDING WARM SEASON MIXTURES	AC	0.1	0.1					
806-10.17	TEMPORARY SEEDING	AC	0.4	0.3	0.1				
806-10.19	SILT FENCE	LF	1289	1181	108				
806-10.21	TYPE I DITCH CHECK	EA	2	2					
806-10.25	INLET CHECK	EA	8	8					
806-99.02	TREE PROTECTION	EA	2	2					
<b>ROADWAY ITEMS SUB-TOTAL =</b>									



**SUMMARY OF QUANTITIES**

**BID FORM**

SUMMARY OF QUANTITIES			BID FORM						
ITEM NUM.	ITEM DESCRIPTION	UNIT	TOTAL QUANTITY	CMAQ FUNDING	100% CITY FUNDING	Unit Cost	CMAQ FUNDING Costs	100% CITY FUNDING Costs	TOTAL Costs
<b>DRAINAGE ITEMS</b>									
731-00.60	PRECAST CONCRETE MANHOLE - 60 IN	LF	5.4	5.4					
731-10.30	PRECAST CONCRETE DROP INLET 3 FT X 2 FT-6IN	LF	4.3	4.3					
731-10.32	PRECAST CONCRETE DROP INLET 3 FT X 2 FT	LF	9.9	9.9					
731-99.02 *	EX INLET/MANHOLE (ADJUST TO GRADE)	EA	1	1					
726-12.24	24 IN. CLASS II REINFORCED CONCRETE PIPE CULVERT	LF	32	32					
726-12.30	30 IN. CLASS II REINFORCED CONCRETE PIPE CULVERT	LF	25	25					
730-99.03 *	6 IN. PVC PIPE CULVERT	LF	103	103					
732-06.24	24 IN. PRECAST CONCRETE FLARED END SECTION	EA	2	2					
732-99.02 *	6'x9'. PRECAST CONCRETE ELLIPTICAL FLARED END SECTION	EA	1	1					
<b>DRAINAGE ITEMS SUB-TOTAL =</b>									
<b>SIGNING ITEMS</b>									
903.10.10	CONCRETE FOOTINGS, EMBEDDED	CUYD	1.17	0.91	0.26				
903-12.20	PIPE POST	LB	818.1	648.7	169.4				
903-12.50A	U-CHANNEL POST, 3 LB	FT	127.50	127.50					
903-12.40	BREAKAWAY ASSEMBLY	EA	9	7.00	2.00				
903-50.04	TYPE SHR2L-1 SIGN	SQFT	81.50	63.50	18.00				
903-99.02 *	RELOCATE SIGNS	EA	3	3					
<b>SIGNING ITEMS SUB-TOTAL =</b>									
<b>STRIPING</b>									
620-61.06	ACRYLIC WATERBORNE PAVEMENT MARKING PAINT, 6 IN, WHITE	LF	1727	1633	94				
620-61.22	ACRYLIC WATERBORNE PAVEMENT MARKING PAINT, 12 IN, WHITE	LF	416	416					
620-61.24	ACRYLIC WATERBORNE PAVEMENT MARKING PAINT, 24 IN, WHITE	LF	207	207					
620-60.01B	4 IN. YELLOW ACRYLIC WATERBORNE PAVEMENT MARKING PAINT	LF	1848	1848					
620-99.03 *	ACRYLIC WATERBORNE PAVEMENT MARKING PAINT, 12 IN, YELLOW	LF	74	74					
620-99.03 *	ACRYLIC WATERBORNE PAVEMENT MARKING PAINT, CURB PAINT, YELLOW	LF	166	166					
620-51.30	TYPE 2 PREFORMED MARKING TAPE (GROOVED), LEFT/RIGHT ARROW	EA	11	11					
620-51.31	TYPE 2 PREFORMED MARKING TAPE (GROOVED), STRAIGHT ARROW	EA	3	3					
620-51.40	TYPE 2 PREFORMED MARKING TAPE (GROOVED), WHITE, YIELD LINE TRIANGLES	EA	21	10	11				
620-99.03 *	ACRYLIC COPOLYMER FAST DRY PAVEMENT MARKING PAINT, SYMBOL, BLUE	EA	3		3				
620-99.03 *	ACRYLIC COPOLYMER FAST DRY PAVEMENT MARKING PAINT, ACRYLIC WATERBORNE PAVEMENT MARKING PAINT, 4 IN, BLUE	LF	772		772				
<b>STRIPING SUB-TOTAL =</b>									
<b>BICYCLE/PEDESTRIAN ITEMS</b>									
608-10.10	CONCRETE CURB RAMP	SQYD	52	52					
608-60.04	CONCRETE SIDEWALK, 4 IN.	SQYD	199	199					
608-10.12	TRUNCATED DOMES	SQ FT	109	109					
<b>BICYCLE/PEDESTRIAN ITEMS SUB-TOTAL =</b>									




SUMMARY OF QUANTITIES					
ITEM NUM.	ITEM DESCRIPTION	UNIT	TOTAL QUANTITY	CMAQ FUNDING	100% CITY FUNDING
<b>ROADWAY ITEMS</b>					
202-20.10	REMOVAL OF IMPROVEMENTS	L. SUM	1	1	
202-99.02a *	EX UTILITY MANHOLE (ATG)	EA	3	2	1
202-99.02b *	EX BUSINESS SIGN (TBR&R)	EA	1	1	
202-99.02c *	EX WATER VALVE (ATG)	EA	1	1	
202-99.02d *	EX MAILBOX (TBR&R)	EA	1	1	
202-99.03 *	FENCE (TBR)	FT	20	20	
203-10.00	CLASS A EXCAVATION	CUYD	539.3	479.2	60.1
203-60.00	COMPACTING EXCAVATION	CUYD	296.2	255.4	40.8
304-05.04	TYPE 5 AGGREGATE FOR BASE (4 IN. THICK)	SQYD	1721	1513	208
310-10.03	GRAVEL (A)	SQYD	63	63	
401-12.09	BITUMINOUS PAVEMENT MIXTURE PG64-22 (BP-1)	TONS	869	820	49
401-30.00	BITUMINOUS PAVEMENT MIXTURE PG64-22 (BASE)	TONS	265.2	254.6	10.6
407-10.05	TACK COAT	GAL	300	264	36
502-11.06	CONCRETE PAVEMENT (6 IN. NON-REINF)	SQYD	99	99	
502-11.08	CONCRETE PAVEMENT (8 IN. NON-REINF)	SQYD	804	677	127
608-30.06	6 IN. CONCRETE MEDIAN STRIP	SQYD	59	59	
608-50.08	PAVED APPROACH, 8 IN	SQYD	368	368	
609-20.12	CONCRETE CURB (6 IN. HEIGHT AND UNDER) TYPE S	LF	30	224	113
609-20.11	INTEGRAL CURB (6 IN. HEIGHT AND UNDER) TYPE A	LF	116	116	
609-20.12	INTEGRAL CURB (6 IN. HEIGHT AND UNDER) TYPE B	LF	800	578	222
616-10.05	CONSTRUCTION SIGNS	SQ FT	122.25	122.3	
616-10.10	RELOCATE SIGNS	SQ FT	160	160	
616-10.28	CHANNELIZER	EA	25	25	
616-10.33	DIRECTIONAL INDICATOR BARRICADE	EA	6	6	
616-99.01 *	MAINTENANCE OF TRAFFIC CONTROL ITEMS	LS	1	1	
616-99.02 *	RELOCATE CHANNELIZER	EA	42	42	
616-99.02 *	RELOCATE DIRECTIONAL INDICATOR BARRICADE	EA	11	11	
617-20.01 *	CONCRETE TRAFFIC BARRIER, TYPE B (MODIFIED)	LF	209	209	
618-10.00	MOBILIZATION	LS	1	0.88	0.12
619-10.00	PAVEMENT EDGE TREATMENT	LF	1600	1373	227
622-10.01	COLDMILLING BITUMINOUS PAVEMENT FOR REMOVAL OF SURFACING (LESS THAN 3 IN. THICK)	SQ YD	1372	874	498
627-40.00	CONTRACTOR FURNISHED SURVEYING AND STAKING	LS	1	0.88	0.12
710-10.10	EPOXY COATED TIE BARS (DRILLED AND INSTALLED)	LBS	1670	1433	237
<del>710-10.10</del>	<del>EPOXY COATED TIE BARS (DRILLED AND INSTALLED)</del>	<del>LBS</del>	<del>1488</del>	<del>1488</del>	
803-10.00A	TURF TYPE TALL FESCUE SODDING	SQ YDS	734	665	69
805-20.00A	SEEDING WARM SEASON MIXTURES	AC	0.1	0.1	
806-10.17	TEMPORARY SEEDING	AC	0.4	0.3	0.1
806-10.19	SILT FENCE	LF	1289	1181	108
806-10.21	TYPE I DITCH CHECK	EA	2	2	
806-10.25	INLET CHECK	EA	8	8	
806-99.02	TREE PROTECTION	EA	2	2	
<b>DRAINAGE ITEMS</b>					
731-00.60	PRECAST CONCRETE MANHOLE - 60 IN	LF	5.4	5.4	
731-10.30	PRECAST CONCRETE DROP INLET 3 FT X 2 FT-6IN	LF	4.3	4.3	
731-10.32	PRECAST CONCRETE DROP INLET 3 FT X 2 FT	LF	9.9	9.9	
731-99.02 *	EX INLET/MANHOLE (ADJUST TO GRADE)	EA	1	1	

SUMMARY OF QUANTITIES					
ITEM NUM.	ITEM DESCRIPTION	UNIT	TOTAL QUANTITY	CMAQ FUNDING	100% CITY FUNDING
726-12.24	24 IN. CLASS II REINFORCED CONCRETE PIPE CULVERT	LF	32	32	
726-12.30	30 IN. CLASS II REINFORCED CONCRETE PIPE CULVERT	LF	25	25	
730-99.03 *	6 IN. PVC PIPE CULVERT	LF	103	103	
732-06.24	24 IN. PRECAST CONCRETE FLARED END SECTION	EA	2	2	
732-99.02 *	6'X9'. PRECAST CONCRETE ELLIPTICAL FLARED END SECTION	EA	1	1	
<b>SIGNING ITEMS</b>					
903.10.10	CONCRETE FOOTINGS, EMBEDDED	CUYD	1.17	0.91	0.26
903-12.20	PIPE POST	LB	818.1	648.7	169.4
903-12.50A	U-CHANNEL POST, 3 LB	FT	127.50	127.50	
903-12.40	BREAKAWAY ASSEMBLY	EA	9	7.00	2.00
903-50.04	TYPE SHR2L-1 SIGN	SQFT	81.50	63.50	18.00
903-99.02 *	RELOCATE SIGNS	EA	3	3	
<b>STRIPING</b>					
620-61.06	ACRYLIC WATERBORNE PAVEMENT MARKING PAINT, 6 IN, WHITE	LF	1727	1633	94
620-61.22	ACRYLIC WATERBORNE PAVEMENT MARKING PAINT, 12 IN, WHITE	LF	416	416	
620-61.24	ACRYLIC WATERBORNE PAVEMENT MARKING PAINT, 24 IN, WHITE	LF	207	207	
620-60.01B	4 IN. YELLOW ACRYLIC WATERBORNE PAVEMENT MARKING PAINT	LF	1848	1848	
620-99.03 *	ACRYLIC WATERBORNE PAVEMENT MARKING PAINT, 12 IN, YELLOW	LF	74	74	
620-99.03 *	ACRYLIC WATERBORNE PAVEMENT MARKING PAINT, CURB PAINT, YELLOW	LF	166	166	
620-51.30	TYPE 2 PREFORMED MARKING TAPE (GROOVED), LEFT/RIGHT ARROW	EA	11	11	
620-51.31	TYPE 2 PREFORMED MARKING TAPE (GROOVED), STRAIGHT ARROW	EA	3	3	
620-51.40	TYPE 2 PREFORMED MARKING TAPE (GROOVED), WHITE, YIELD LINE TRIANGLES	EA	21	10	11
620-99.03 *	ACRYLIC COPOLYMER FAST DRY PAVEMENT MARKING PAINT, SYMBOL, BLUE	EA	3		3
620-99.03 *	ACRYLIC COPOLYMER FAST DRY PAVEMENT MARKING PAINT, ACRYLIC WATERBORNE PAVEMENT MARKING PAINT, 4 IN, BLUE	LF	772		772
<b>BICYCLE/PEDESTRIAN ITEMS</b>					
608-10.10	CONCRETE CURB RAMP	SQYD	52	52	
608-60.04	CONCRETE SIDEWALK, 4 IN.	SQYD	199	199	
608-10.12	TRUNCATED DOMES	SQ FT	109	109	
<b>ELECTRICAL</b>					
901-11.15	BRACKET ARM, 15 FT.	EACH	4	4	
901-13.00	LUMINAIRE, 150 WATT LED (MAST ARM LTG)	EACH	4	4	
902-02.11	SIGNAL HEAD, TYPE 1S	EACH	6	6	
902-02.13	SIGNAL HEAD, TYPE 3S	EACH	1	1	
902-05.13	SIGNAL HEAD, TYPE 3B	EACH	7	7	
902-05.14	SIGNAL HEAD, TYPE 4B	EACH	4	4	
902-27.08	POST, SIGNAL 8 FT.	EACH	2	2	
902-31.25	POST, TYPE CL, 25 FT. ARM	EACH	1	1	
902-31.40	POST, TYPE CL, 40 FT. ARM	EACH	2	2	
902-31.55	POST, TYPE CL, 55 FT. ARM	EACH	1	1	
902-42.83	CONTROLLER ASSEMBLY HOUSING, NEMA TS2 CONTROLLER	EACH	1	1	
902-49.75	VIDEO DETECTION SYSTEM, W/DILEMMA ZONE RADAR	EACH	1	1	
902-86.21	POWER SUPPLY ASSEMBLY, T2 WITH 120V LTG CABINET & UPS	EACH	1	1	
902-52.00	CONDUIT, 2 IN., TRENCH WITH TRACER WIRE	LIN. FT.	104	104	
902-53.00	CONDUIT, 3 IN., TRENCH WITH TRACER WIRE	LIN. FT.	103	103	
902-73.00	CONDUIT, 3 IN., PUSHED WITH TRACER WIRE	LIN. FT.	342	324	
902-81.00	CABLE, 10 AWG 1 CONDUCTOR, POLE AND BRACKET	LIN. FT.	420	420	
902-82.08	CABLE, 8 AWG 1 CONDUCTOR, POWER	LIN. FT.	150	150	

SUMMARY OF QUANTITIES					
ITEM NUM.	ITEM DESCRIPTION	UNIT	TOTAL QUANTITY	CMAQ FUNDING	100% CITY FUNDING
902-83.02	CABLE, 12 AWG 2 CONDUCTOR	LIN. FT.	930	930	
902-83.08	CABLE, 16 AWG 2 CONDUCTOR	LIN. FT.	1510	1510	
902-83.10	CABLE, 16 AWG 5 CONDUCTOR	LIN. FT.	1300	1300	
902-83.11	CABLE, 16 AWG 7 CONDUCTOR	LIN. FT.	2920	2920	
902-88.11	PREFORMED PULLBOX, CLASS 2	EACH	3	3	
902-88.12	PREFORMED PULLBOX, CLASS 3	EACH	2	2	
902-91.00	BASE, CONCRETE	CUYD	15.9	15.9	
902-99.01	TRAFFIC SIGNAL MAINTENANCE & PROGRAMMING	LS	1	1	
902-99.02	PUSHBUTTON POST	EACH	2	2	
902-99.02	RELOCATE/RETERMINATE FIBER OPTIC CABLES	EACH	2	2	
902-99.02	SPECIAL EVENT BUTTON	EACH	1	1	
902-99.02	NETWORK CONNECTED SIGNAL MONITOR	EACH	1	1	
902-99.02	DETECTOR, PUSHBUTTON W/APS FEATURE	EACH	6	6	
902-99.02	SDLC PANEL	EACH	1	1	

ALT BID ITEMS					
ITEM NUM.	ITEM DESCRIPTION	UNIT	TOTAL QUANTITY	CMAQ FUNDING	100% CITY FUNDING
910.37.00	CCTV CAMERA ASSEMBLY	EACH	1	1	

Corporate Engineering  
Certificate # 000381

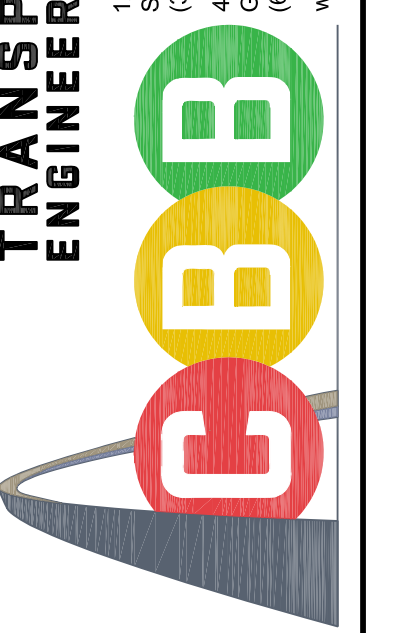


**CIVIL ENGINEER**  
DATE PREPARED: **1/26/18**  
ROUTE: MO  
DISTRICT: SL SHEET NO.: **3**  
COUNTY: JEFFERSON  
JOB NO.: 129-15  
CONTRACT ID.:  
PROJECT NO.:  
BRIDGE NO.:

DESCRIPTION

DATE	3/9/16	PRELIMINARY APPROVAL
DATE	12/5/17	FINAL R/W PLANS (REV)
DATE	12/13/17	FINAL R/W PLANS
DATE	1/26/18	PS&E PLANS
DATE	5/29/18	ADDENDUM 1

**TRANSPORTATION ENGINEERS+PLANNERS**  
13400 OLIVE BLVD, SUITE 430  
ST. LOUIS, MO 63141  
(314) 878-6644  
450 COTTONWOOD RD, SUITE B  
GLEN CARBON, IL 62034  
(618) 656-2612  
www.cbtraffic.com



**SUMMARY OF QUANTITIES**  
ROADWAY IMPROVEMENTS  
JEFFCO BLVD AND TENBROOK RD  
ARNOLD, MISSOURI  
CMAQ-5403(668) TIP 6624-16

IF A SEAL IS PRESENT ON THIS SHEET IT HAS BEEN ELECTRONICALLY SEALED AND DATED.





CIVIL ENGINEER

DATE PREPARED  
**1/26/18**

ROUTE STATE  
MO

DISTRICT SHEET NO.  
SL 8

COUNTY  
JEFFERSON

JOB NO.  
129-15

CONTRACT ID.

PROJECT NO.

BRIDGE NO.

DATE	DESCRIPTION
3/9/16	MDOT PRELIMINARY APPROVAL
12/5/17	FINAL R/W PLANS (REV)
12/13/17	PRELINAL PLANS
1/26/18	PS&E PLANS
5/29/18	ADDENDUM 1

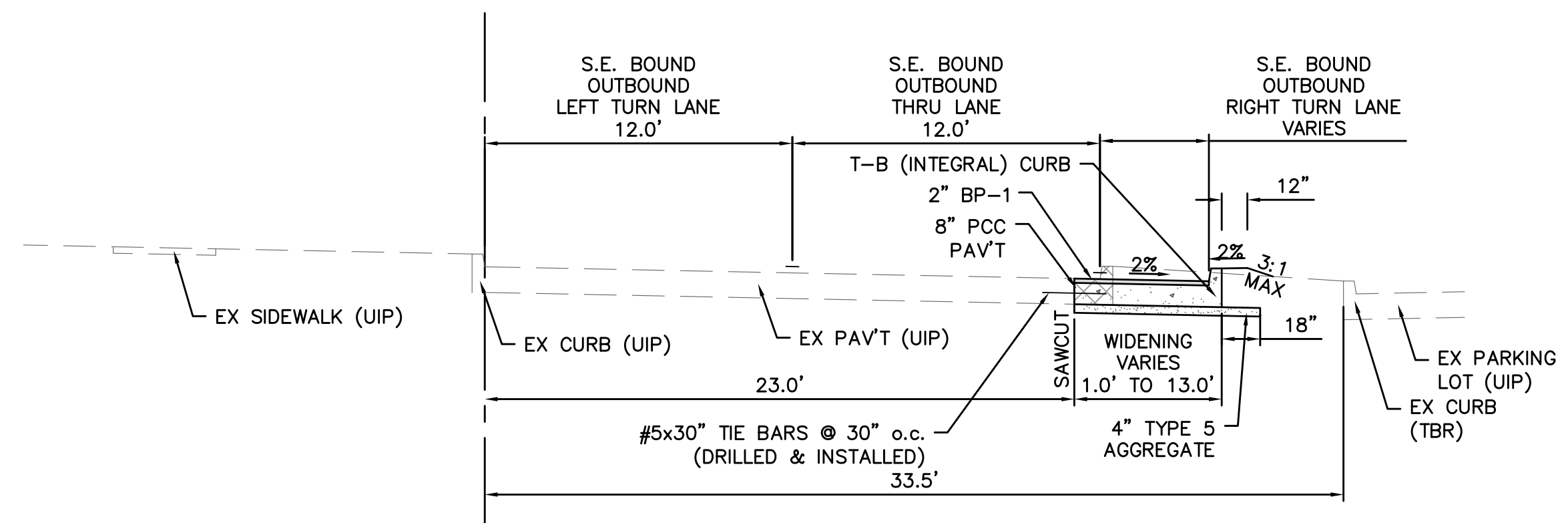
**TRANSPORTATION ENGINEERS+PLANNERS**

13400 OLIVE BLVD, SUITE 430  
ST. LOUIS, MO 63141  
(314) 878-6644

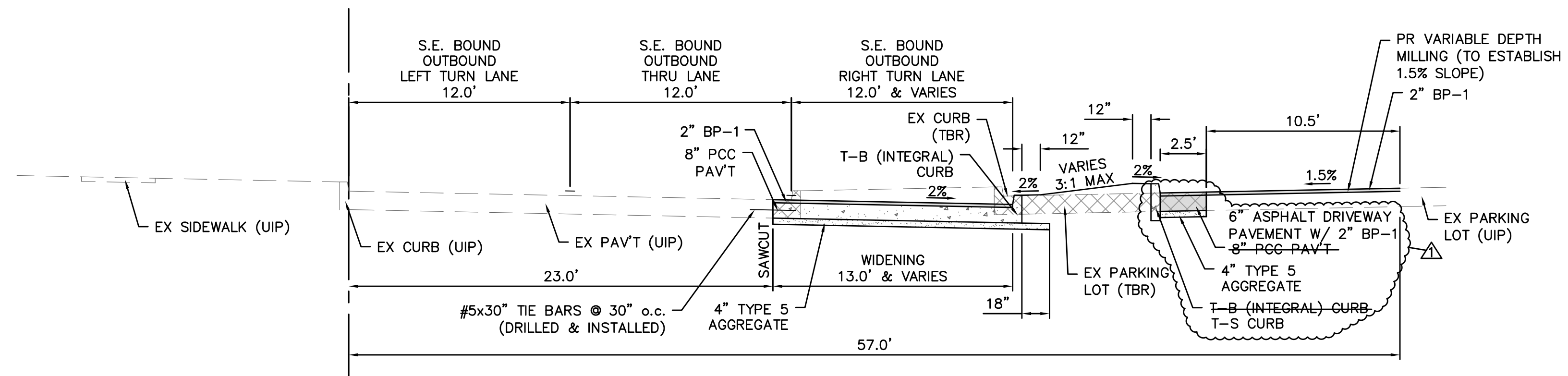
450 COTTONWOOD RD, SUITE B  
GLEN CARBON, IL 62034  
(618) 656-2612  
www.cbtraffic.com

**FOX ENTRANCE  
TYPICAL SECTION  
ROADWAY IMPROVEMENTS  
JEFFCO BLVD AND TENBROOK RD  
ARNOLD, MISSOURI  
CMAQ-5403(668) TIP 6624-16**

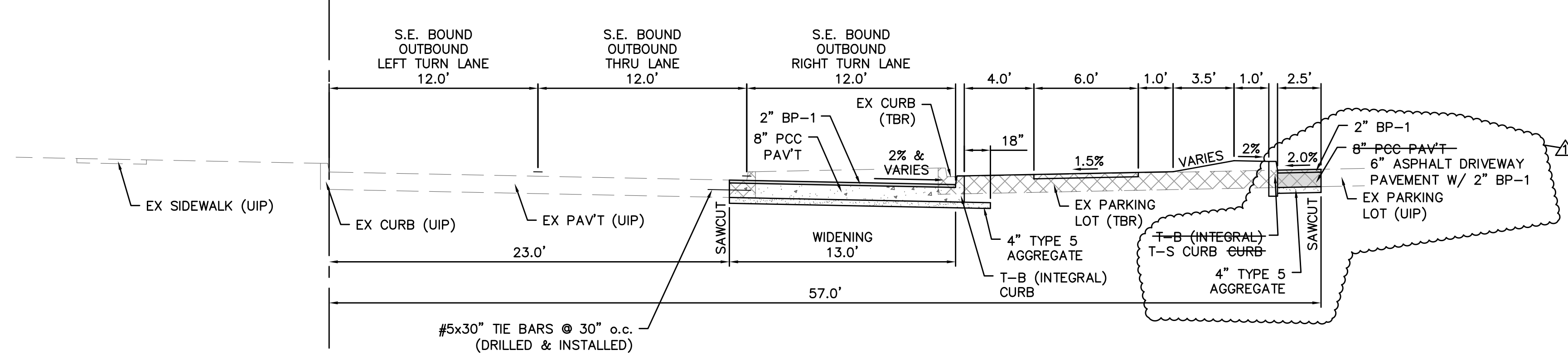
IF A SEAL IS PRESENT ON THIS SHEET IT HAS BEEN ELECTRONICALLY SEALED AND DATED.



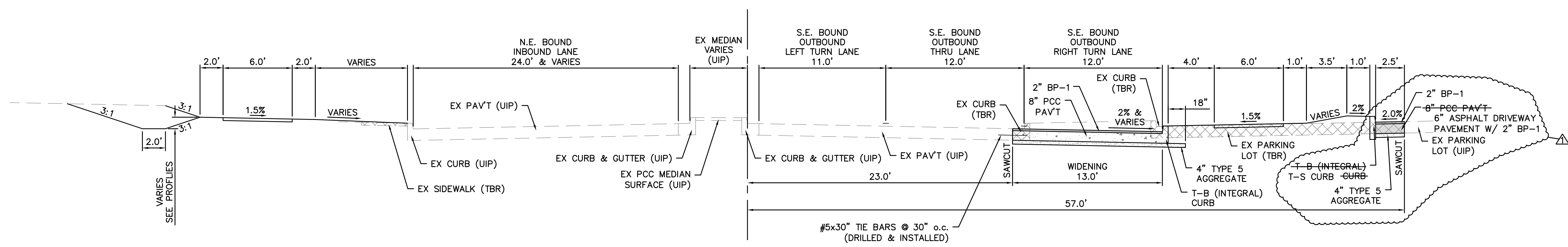
FOX SCHOOL ENTRANCE  
STA 11+43.09 TO 11+75.44



FOX SCHOOL ENTRANCE  
STA 11+75.44 TO 12+59.83



FOX SCHOOL ENTRANCE  
STA 12+59.83 TO 13+56.55



FOX SCHOOL ENTRANCE  
STA 13+56.55 TO 15+00.00



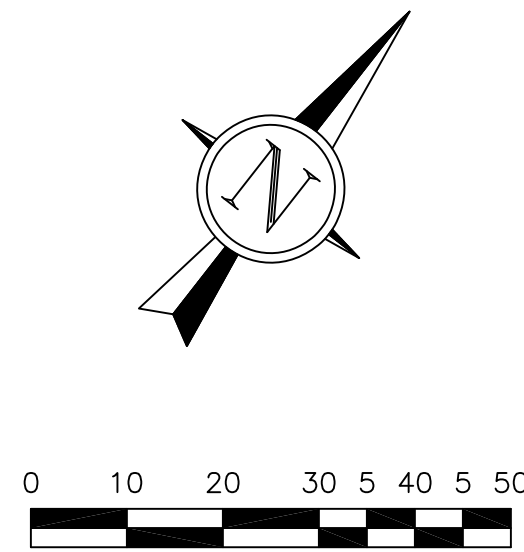
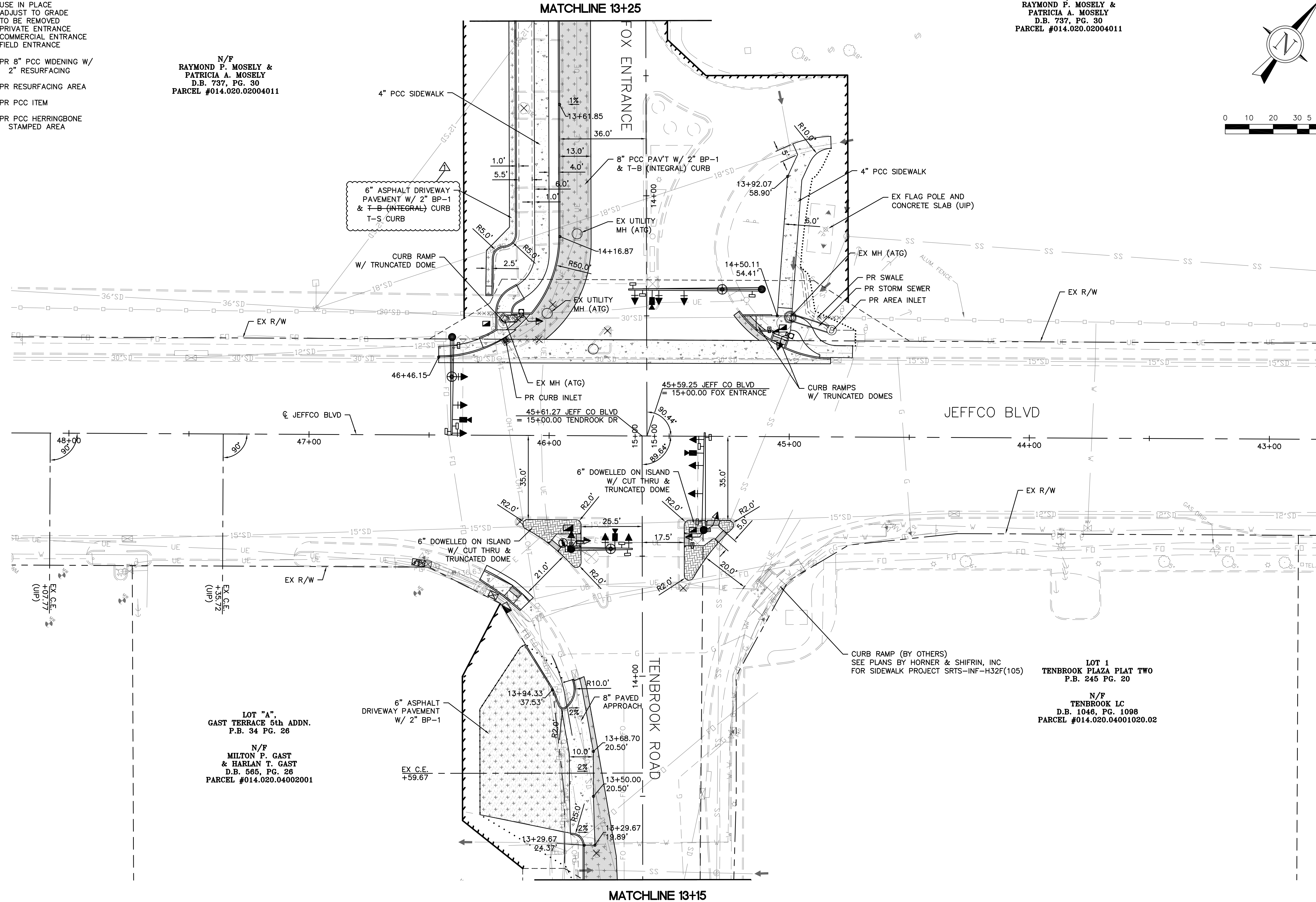
**PROPOSED LEGEND**

- EX - EXISTING
- PR - PROPOSED
- UIP - USE IN PLACE
- ATG - ADJUST TO GRADE
- TBR - TO BE REMOVED
- P.E. - PRIVATE ENTRANCE
- C.E. - COMMERCIAL ENTRANCE
- F.E. - FIELD ENTRANCE
- PR 8" PCC WIDENING W/ 2" RESURFACING
- PR RESURFACING AREA
- PR PCC ITEM
- PR PCC HERRINGBONE STAMPED AREA

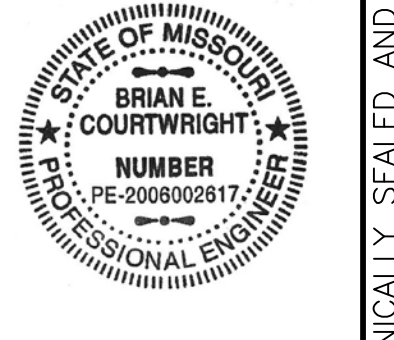
N/F  
**RAYMOND P. MOSELY &  
 PATRICIA A. MOSELY**  
 D.B. 737, PG. 30  
 PARCEL #014.020.02004011

LOT "A",  
 GAST TERRACE 5th ADDN.  
 P.B. 34 PG. 26  
 N/F  
**MILTON P. GAST  
 & HARLAN T. GAST**  
 D.B. 565, PG. 26  
 PARCEL #014.020.04002001

N/F  
**RAYMOND P. MOSELY &  
 PATRICIA A. MOSELY**  
 D.B. 737, PG. 30  
 PARCEL #014.020.02004011



Corporate Engineering  
 Certificate # 000381



CIVIL ENGINEER

DATE PREPARED	1/26/18
ROUTE	MO
DISTRICT	SL
SHEET NO.	10
COUNTY	JEFFERSON
JOB NO.	129-15
CONTRACT ID.	
PROJECT NO.	
BRIDGE NO.	

DATE	DESCRIPTION
3/9/16	MoDOT PRELIMINARY APPROVAL
12/5/17	FINAL R/W PLANS (REV)
12/13/17	FINAL PLANS
1/26/18	PS&E PLANS
5/29/18	ADDENDUM 1

**TRANSPORTATION ENGINEERS+PLANNERS**

13400 OLIVE BLVD, SUITE 430  
 ST. LOUIS, MO 63141  
 (314) 878-6644

450 COTTONWOOD RD, SUITE B  
 GLEN CARBON, IL 62034  
 (618) 656-2612  
 www.cbtraffic.com

PLAN SHEET

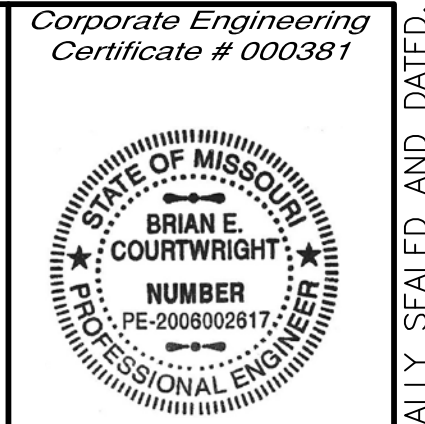
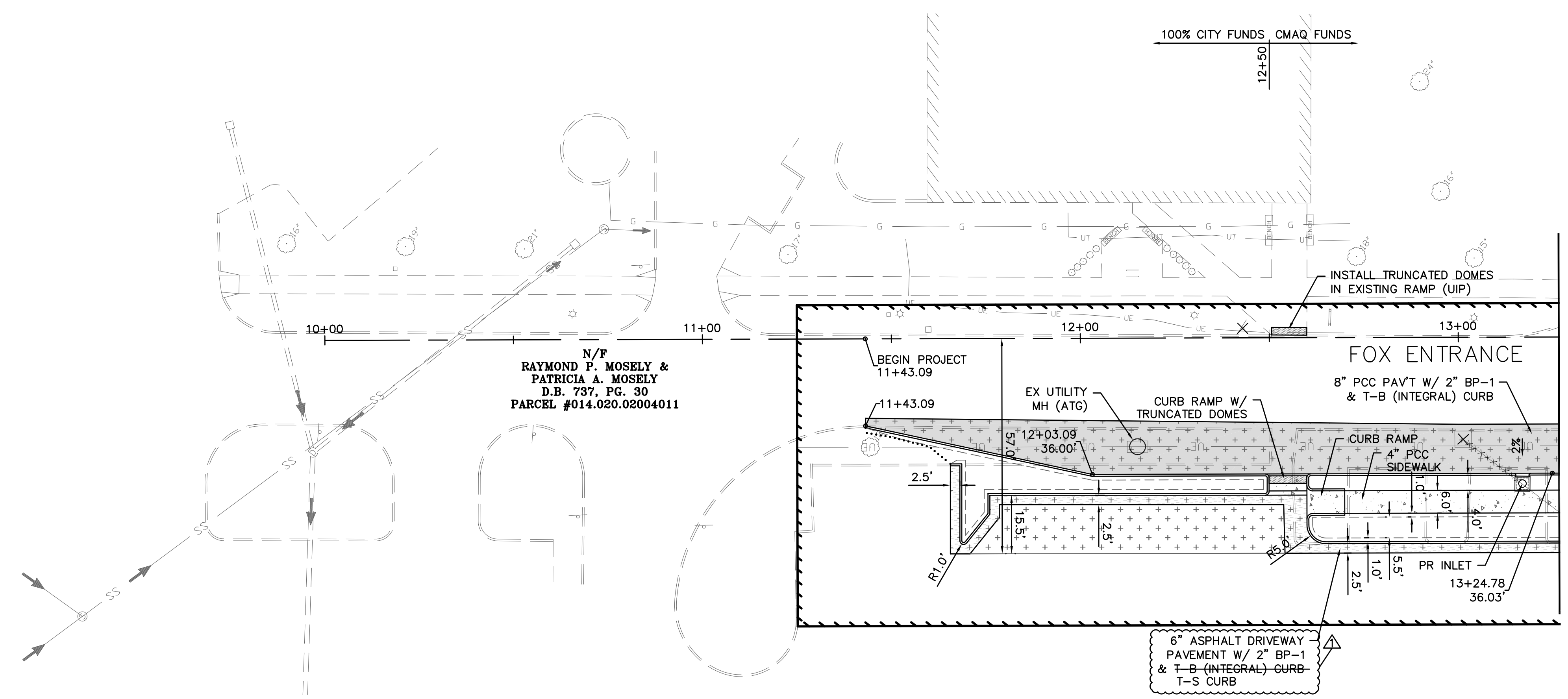
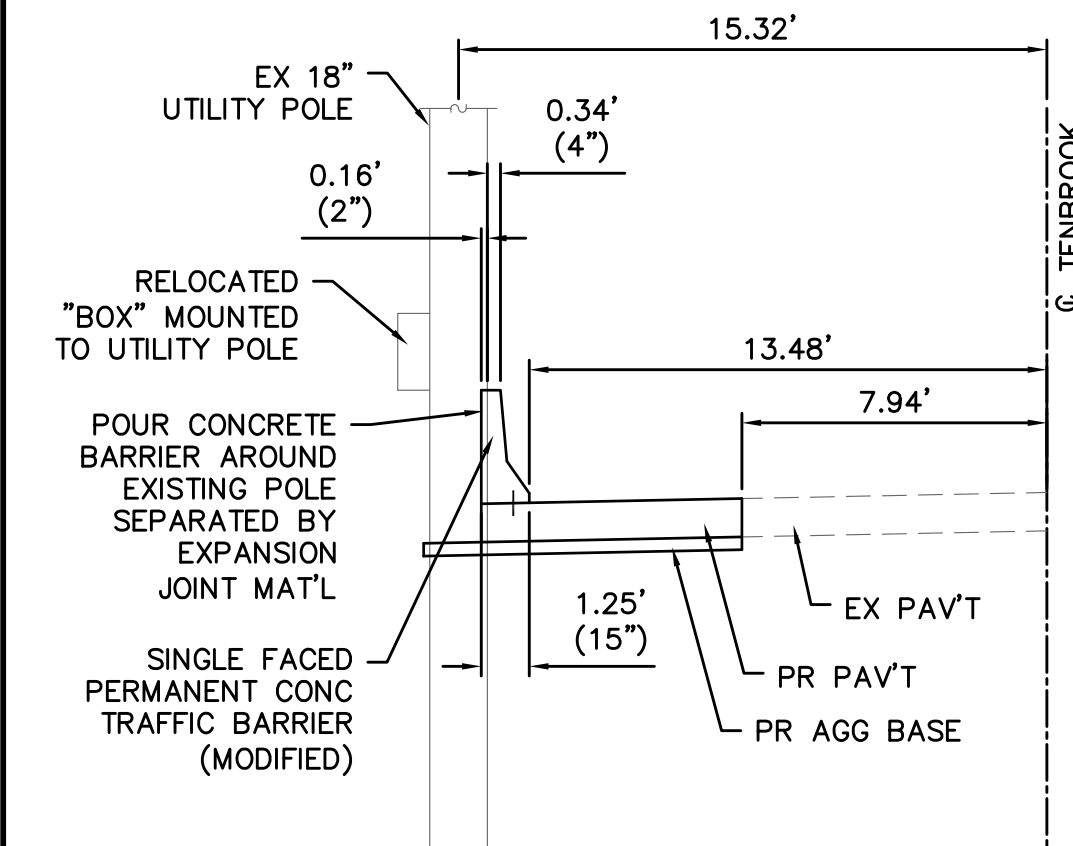
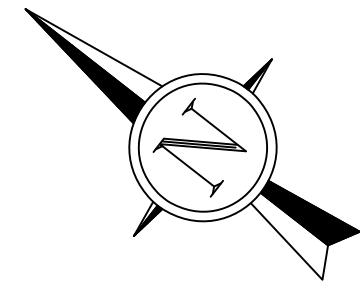
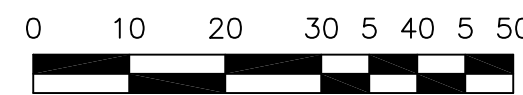
ROADWAY IMPROVEMENTS  
 JEFFCO BLVD AND TENBROOK RD  
 ARNOLD, MISSOURI  
 CMAQ-5403(668) TIP 6624-16

IF A SEAL IS PRESENT ON THIS SHEET IT HAS BEEN ELECTRONICALLY SEALED AND DATED.

**PROPOSED LEGEND**

- EX - EXISTING
- PR - PROPOSED
- UIP - USE IN PLACE
- ATG - ADJUST TO GRADE
- TBR - TO BE REMOVED
- P.E. - PRIVATE ENTRANCE
- C.E. - COMMERCIAL ENTRANCE
- F.E. - FIELD ENTRANCE

- PR 8" PCC WIDENING W/ 2" RESURFACING
- PR RESURFACING AREA
- PR PCC ITEM
- PR PCC HERRINGBONE STAMPED AREA



**CIVIL ENGINEER**

DATE PREPARED: **1/26/18**

ROUTE: MO

DISTRICT: SL

SHEET NO: **11**

COUNTY: JEFFERSON

JOB NO.: 129-15

CONTRACT ID.

PROJECT NO.

BRIDGE NO.

DESCRIPTION

DATE	DESCRIPTION
3/9/16	MoDOT PRELIMINARY APPROVAL
12/5/17	FINAL R/W PLANS (REV)
12/13/17	PRELIM PLANS
1/26/18	PS&E PLANS
5/29/18	ADDENDUM 1

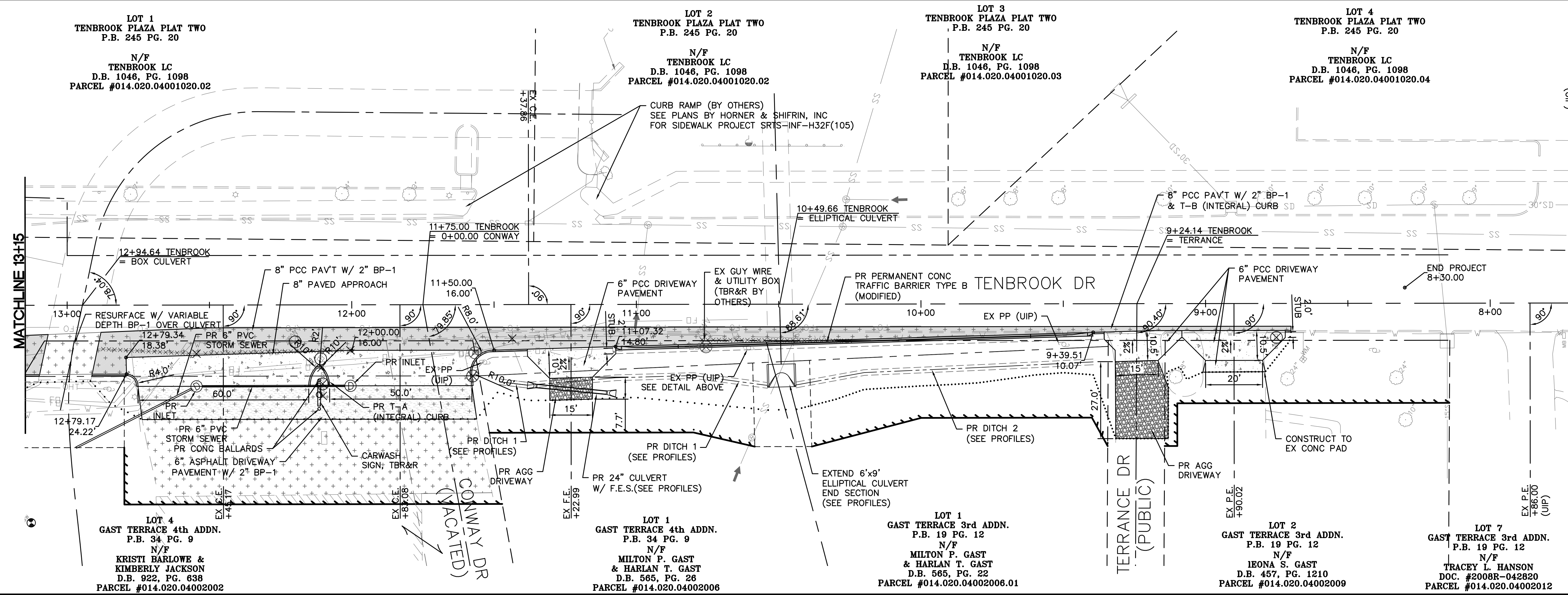
**TRANSPORTATION ENGINEERS+PLANNERS**

12400 OLIVE BLVD SUITE 430  
ST. LOUIS, MO 63141  
(314) 878-6644

450 COTTONWOOD RD, SUITE B  
GLEN CARON, IL 62034  
(618) 656-2612  
www.cbtraffic.com

**PLAN SHEET**

ROADWAY IMPROVEMENTS  
JEFFCO BLVD AND TENBROOK RD  
ARNOLD, MISSOURI  
CMAQ-5403(668) TIP 6624-16



IF A SEAL IS PRESENT ON THIS SHEET IT HAS BEEN ELECTRONICALLY SEALED AND DATED.