



August 13, 2018

RE: Great Rivers Greenway District
Gravois Greenway
Orlando's to River des Peres Greenway – Phase 2
Federal Project No.: TAP + STP 9901(632)
GRG Project No. 118A
Addendum Number 1

Bid Opening Date Is: Not Changed

Organizations intending to submit a bid on Gravois Greenway, Orlando's to River des Peres Greenway – Phase 2 are hereby advised of the following additions and modifications to the bidding documents:

TABLE OF CONTENTS – ADDENDUM NO. 1

ITEM NO.	DESCRIPTION
1.	Bidding Questions, Answers and Clarifications
2.	Revisions to Bid Form in Volume 1 – Project Manual for Gravois Greenway, Orlando's to River des Peres Greenway – Phase 2
3.	Addition and Revisions to JSP's in Volume 2 – Job Special Provisions and Supplemental Information for Gravois Greenway, Orlando's to River des Peres Greenway – Phase 2
4.	Revisions to Civil Drawings (3 – 8 ½ x 11 sheets)

ITEM NO. 1 – BIDDING QUESTIONS, ANSWERS AND CLARIFICATIONS

QUESTION: Does a subcontractor have to be MoDOT certified?

ANSWER: Only prime contractors have to be prequalified with MoDOT at the time of bid. Subcontractors do not have to be prequalified at the time the prime contractor submits their bid, however they must be on MoDOT's Approved Subcontractor list prior to starting any work on the project (see EPG 136.10.2 and 136.10.2.1 for further info). MoDOT's Local Programs Webpage has links to MoDOT's current Contractor and Subcontractor lists. All subcontracts must be submitted to the MoDOT Local Programs Construction representative prior to the sub performing any work on the project (see EPG 136.11.5 for procedure and forms).

QUESTION: Do DBE's have to be MoDOT certified?

ANSWER: DBE firms must be on the MRCC list to be counted toward DBE participation under the Prime contractor's bid. The Prime has up to 3 days to submit the DBE paperwork to GRG after bid opening. Since the MRCC list is more than just a MoDOT list, occasionally DBE firms are on the list, but they are not preapproved MoDOT subcontractors. See answer above about subcontractor approval. The MRCC DBE Directory can be found at the following link:
http://www.modot.org/business/contractor_resources/External_Civil_Rights/DBE_program.htm

QUESTION: Are there any additional requirements from MoDOT because work takes place within the MoDOT right-of-way?

ANSWER: As stated in the bid proposal, MoDOT requires a Permit to Perform Work on Right of Way (see the MoDOT Permit webpage for further info and requirements). The bid proposal also requires all work under the contract shall conform to MoDOT's Standard Specifications, including MoDOT Standard Specification Section 107 which lists various requirements.

QUESTION: What are the insurance requirements for Subcontractors?

ANSWER: Per item 9.1.2.d of Form 5: General Conditions of the Contract for Construction: "The Contractor shall require each of its Subcontractors to procure and maintain during the life of its subcontract, Subcontractor's Insurance of the type and in not less than the amounts specified hereinabove, except explosion, collapse and underground coverage to be required only of Subcontractors whose Work involves these hazards."

A link to MoDOT's subcontractor insurance requirements are found at the How to Become a MoDOT Subcontractor webpage. They are found in MoDOT Standard Specification Section 107.13.

QUESTION: Are the electronic CAD files containing existing/proposed contours and trail centerline available to the earthworks contractor during bidding services to perform quantity take-offs?

ANSWER: The CAD file is available on CD for pick-up at Great Rivers Greenway (6178 Delmar Blvd.). The file contains the following information: Existing and proposed contours; existing and proposed walls; existing buildings; proposed bridge/tunnel/barriers/gutter; grading limits; sheet outlines; trail centerline and stations. An AutoCAD File Request / Disclaimer / Waiver must be completed and submitted to Lonny Boring prior to receiving a CD of the above information. The AutoCAD File Request / Disclaimer / Waiver is attached.

QUESTION: In JSP 800, Section 05. Materials, it states for the 3-coat concrete coating system to use High Solids Inorganic Zinc as a primer. Inorganic Zinc is only used as a primer coat for steel not concrete. Instead two coats of an epoxy and one coat of a urethane should be used or a similar system.

ANSWER: JSP-800, Section 05. MATERIALS, shall be modified as follows:

- B. All exposed surfaces shall receive a minimum 3-coat system including a prime coat, intermediate coat and top coat, and a non-sacrificial anti-graffiti system. The paint system may consist of the following:
 - 1. Two coats of a multiple-component epoxy primer designed to protect concrete surfaces with exterior exposure.
 - 2. Multiple-component aliphatic, acrylic polyurethane resin coating with high performance protection and color retention.
 - 3. A similar system may also be utilized based on manufacturer's recommendation for exposure and substrate indicated.

QUESTION: When will CenturyTel fiber optic relocation work be completed.

ANSWER: The fiber optic relocation from the south side of I-55 to the north side of I-55 is expected to be complete on or about November 1, 2018.

QUESTION: Will you provide the pre-bid conference attendee list?

ANSWER: The attendee list is attached to Addendum No. 1.

CLARIFICATION REGARDING BID BONDS: Either electronic bid bond or paper bid bond is acceptable. Bidders are required to submit a bid bond in either electronic OR paper format via Bid Express.

ITEM NO. 2 – REVISIONS TO BID FORM (See Updated Bid Form, Attached)

Notes:

1. Bid form is located in Volume 1 – Project Manual for Gravois Greenway, Orlando's to River Des Peres Greenway – Phase 2
2. The updates to the bid form shall also be made to the same Item #'s shown on Sheet C.000A and Sheet C.000B.
3. The changes to the quantities and addition of the permitting allowance have been adjusted in the Bid Express Bid Form Table.
4. The following changes were made:

Item #	Description of Change:
29	Quantity changed
135	Quantity changed
136	Quantity changed
137	Quantity changed
140	Quantity changed
143	Quantity changed
144	Quantity changed
203	Quantity changed
215	New item number added for Permit Allowance

ITEM NO. 3 – ADDITION AND REVISIONS TO JSP’S IN VOLUME 2 – JOB SPECIAL PROVISIONS AND SUPPLEMENTAL INFORMATION FOR GRAVOIS GREENWAY, ORLANDO’S TO RIVER DES PERES GREENWAY – PHASE 2

1. Updated Table of Contents, attached.
2. Addition of JSP-25, Permit Allowance, attached.
3. Inclusion of JSP-121, Turf Reinforcement Mat page 2, which was missing. Entire JSP is attached.
4. Addition of the following four (4) bridge suppliers to Section 1.2.4 of JSP-500 – Prefabricated Pedestrian Bridge Truss.

Art Thureson, Inc.
4000 West Walton
Waterford, MI 48329
Contact: Jon Cheney
Ph: 248-623-8599

Excel Bridge Manufacturing
12001 Shoemaker Avenue
Santa Fe Springs, CA 90670
Contact: Jodi Seidl
Ph: 320-762-1368

Pioneer Bridges
119 40th Street NE
Fort Payne, AL 35967
Contact: Scott Dempsey
Ph: 866-708-5778

Wheeler Lumber, LLC
9531 West 78th Street STE 100
Minneapolis, MN 55344
Contact: Michael Purkey
Ph: 612-249-0852

ITEM NO. 4 – REVISIONS TO CIVIL DRAWINGS

The attached 8 ½ x 11 sheets contain modifications to the following civil drawings:

1. Sheet 1 of 3:
 - a. C.202
 - b. C.205
 - c. C.221
 - d. C.605
 - e. C.606
2. Sheet 2 of 3:
 - a. C.600
3. Sheet 3 of 3:
 - a. C.205
 - b. C.606



AUTOCAD FILE REQUEST / DISCLAIMER / WAIVER

**Great Rivers Greenway: Gravois Greenway
Orlando's to River des Peres Greenway – Phase 2
TAP & STP -9901(632)**

In accordance with JSP-01, Section 12.0 REQUEST FOR ELECTRONIC FILES AND RELEASE, the Contractor/Bidder hereby requests the following AutoCAD file(s):

“GRG 12-124_Phase 2 C2xx Plan View_FOR INFORMATION ONLY.dwg”

Disclaimer:

- The AutoCAD file is being provided **FOR THE CONTRACTOR'S/BIDDER'S INFORMATION ONLY**. Reliance on the content and/or accuracy of this file is at the Contractor's/Bidder's sole risk. The .pdf format Drawings provided on Bid Express are the official Drawings and shall take precedence in all instances.
- The AutoCAD file listed above was derived from the AutoCAD file used to produce Drawings C.201 to C.217 of the bid documents dated 7/19/2018.
- The AutoCAD file is a two-dimensional representation of the work.
 - o Any elevation data included in the AutoCAD file has not been verified for accuracy or audited.
 - o Due to the plotted scale of the Drawings, some Work has been exaggerated or simplified in this AutoCAD file.
- Reitz & Jens, Inc. makes no warranty, guarantee, or representation as to the accuracy or completeness of AutoCAD files as they relate to .pdf Drawings. The attached electronic documents contain project specific information. They are being forwarded for the recipient's sole use. The recipient of the attached electronic documents is hereby notified that these documents may not be site adapted and/or may not be suitable for the recipient's intended use. Any reuse of these documents is solely at the recipient's own risk. As a strict condition of having used the attached electronic documents, the recipient hereby agrees to indemnify, release, defend, and hold harmless Reitz & Jens, Inc. and its Owners, Officers, agents, and employees from and against any and all damages, suits, actions, claims, costs (including legal and attorney's fees) and other expenses directly and/or indirectly arising from and/or related to the recipient's use of the attached electronic document(s). The recipient is hereby directed to remove from all transmitted documents prior to reuse, all references to "Reitz & Jens, Inc.", the Reitz & Jens, Inc logo, and all names and/or initials of Reitz & Jens, Inc, personnel appearing on the documents. No further distribution, propagation or reuse of these documents is permitted beyond that expressly approved in writing by Reitz & Jens, Inc. Reitz & Jens, Inc. is not responsible for any electronic viruses that may be contained in any electronic files.

The Contractor/Bidder acknowledges the above and has signed this waiver as a condition of receiving the AutoCAD file(s) in accordance with JSP-01, Section 12.0 of the Job Special Provisions:

Name of Contractor/Bidder

Date

Title

Telephone Number

Company Name

Email



PRE-BID CONFERENCE SIGN-IN SHEET

GRAVOIS GREENWAY – PHASE 2

Thursday, August 9, 2018 at 1:30 p.m.

NAME	COMPANY	PHONE NO.	EMAIL	Bidding as GC – Yes/No	DBE – Yes/No
1. Chuck Wagner	Plocher Construction	618 654-9408	cwagner@plocherco.com	yes	
2. Tim Leadley	ABNA	314 456-6834	tleadley@abnacorp.com		Yes
3. DAVE BUCKEL	IDEAL LANDSCAPE	314-575-5550	BUCKEL.DAVE@IDEALLANDSCAPE.COM	YES/NO/YES	NO
4. Tanner Search	Kolb Grading	636-441-0200	t.search@kolbgrading.com	yes	Yes
5. Andy Daub	"	"	a.daub@kolbgrading.com		
6. Blake Boggs	KCI	314-605-7846	bboggs@kciconstruction.com	Yes	NO
7. Chris Finn	Pace Construction	314-524-7223	cfinn@lionmark.com	yes	NO
8. Andy Daub	Kolb Grading	314-805-2009	a.daub@kolbgrading.com	yes	—
9. Brian Ahl	GATEWAY TREE CARE	636-328-6039	BAAH@GATEWAYTREECARE.COM	YES	YES
10. Becky McMahon	DOM	314-278-5591	bmacmahon@jmcological.com	No	N
11. BERNARD SIMMONS	CITY PESTICAL	314-241-4072	B SIMMONS CITY DESIGN GROUP INC. COM	NO	Y
12. Austin Johnson	GRIFFIN REPORTING	314-750-5490	austin.johnson@griffinreporting.com	N	NO
13. Gabbey Zottaville	A.G. ROSS CONSTRUCTION	314-838-9055	gabbeyz@gmail.com	YES	NO
14. Jay Sitzmann	National Safety Consulting	636-357-7762	jay@national-safety-consulting.com	No	YES
15. Greg Hauser	Vee Jay	314 581 4020	greghauser.3737@gmail.com	YES	

PRE-BID CONFERENCE SIGN-IN SHEET

GRAVOIS GREENWAY – PHASE 2

Thursday, August 9, 2018 at 1:30 p.m.

NAME	COMPANY	PHONE NO.	EMAIL	Bidding as GC – Yes/No	DBE – Yes/No
1. Eric Eagles	BSI	314-781-7620	erice@bsistl.com	N	N
2. Paul Holtmann	BSI	" " "	pholtmann@bsistl.com	N	N
3. Sara Runge	DARE Studio	314-6808316	srunge@dg2design.com	N	N
4. TIM HUDWALKER	BSI	781-7920	timh@bsistl.com	N	N
5. Rick Wader	A-Plus	636-498-1710	Resgriick@surbell.net	N	N
6. Gordon Ramey	Kozeny Wagner	636-296-2014	gramey@kozenywagner.com	Y	N
7. Charles Danner	Castle	314-461-2848	charles.danner@digcastle.com	Y	N
8. Todd Black	Contech	913-216-3818	tblack@conteches.com	N	N
9. Kevin Bettery	Midwest Turf	636-485-1742	Kbettery@midwestturf.com	N	Y
10. Phil	CBC	618-223-9188	Phil@johnson.ca	N	Y
11. Peter Nyati	L. Kerney Const	314-421-5933	phyatt@lkerney.com	Y	N
12. Aron Hansen	Thomas Ind. Coatings	314-220-4769	ahansen@thomasci.com	N	N
13.					
14.					
15.					

PRE-BID CONFERENCE SIGN-IN SHEET

GRAVOIS GREENWAY – PHASE 2

Thursday, August 9, 2018 at 1:30 p.m.

NAME	COMPANY	PHONE NO.	EMAIL	Bidding as GC – Yes/No	DBE – Yes/No
1. Tim Kile	Millstone Weber	636-949-0038	Tim.Kile@millstoneweber.com	Y	N
2. Ryan Schroeder	HILSDALE	314-919-6354	rschroeder@alberici.com	N	N
3. Ryan Lazier	Gershenson	636-549-0198	rlazier@gershenson.com	Y	N
4. Scott Kurn	R.G Ross Const	314-541-5605	Scott K@ R.G Ross. Com	Y	N
5. Xavier Hanku	MOKAN CCAC *	314.454.9675	planroom@mokanccac.org		
6. JOHN COFFMAN	VEESAY	314-565-5661	JOHN@VEEJAYCEMENT.COM	Y	
7. Ken Byrne	Hansen's	314 280 0579	Ken@hansensfre.com	N	N
8. Lawrence Nwachukwu	BASILICO ENGINEERING	314.289.8777	Law@basilicoengineering.com	N	Yes
9.					
10.					
11.					
12.					
13.					
14.					
15.					

* MOKAN CCAC helps connect GCs to DBE subcontractors & minority workforce.

**BID FORM: GRAVOIS GREENWAY - ORLANDO'S TO RIVER DES PERES GREENWAY - PHASE 2 -
FEDERAL PROJECT NO. TAP & STP -9901 (632)**

Item #	Bid Item	Bid Category	Type of Work	Description	Quantity	Unit	Unit Cost	Total Cost
FEDERAL REIMBURSEMENT BASE BID ITEMS								
1	JSP-06	Base Bid	Roadway	ON THE JOB TRAINING ALLOWANCE	\$20,000	ALLOWANCE	-	\$ 20,000.00
2	JSP-100	Base Bid	Roadway	MOBILIZATION	1	LS		\$ -
3	JSP-101	Base Bid	Roadway	CONTRACTOR SURVEYING AND STAKING	1	LS		\$ -
4	JSP-103	Base Bid	Roadway	CLEARING AND GRUBBING	12.5	ACRE		\$ -
5	JSP-104	Base Bid	Roadway	REMOVAL OF IMPROVEMENTS	1	LS		\$ -
6	JSP-110	Base Bid	Roadway	STORM WATER POLLUTION PREVENTION PROGRAM	1	LS		\$ -
7	JSP-111	Base Bid	Roadway	WATER POLLUTION CONTROL MANAGER	69	WEEK		\$ -
8	JSP-112	Base Bid	Roadway	SILT BARRIER	7,848	LF		\$ -
9	JSP-114	Base Bid	Roadway	INLET PROTECTION	24	EA		\$ -
10	JSP-116	Base Bid	Roadway	DITCH CHECK	108	EA		\$ -
11	JSP-117	Base Bid	Roadway	WASHDOWN STATION	7	EA		\$ -
12	JSP-118	Base Bid	Roadway	CONSTRUCTION ENTRANCE	9	EA		\$ -
13	JSP-119	Base Bid	Roadway	TEMPORARY CONTRACTOR ACCESS	1	LS		\$ -
14	JSP-120	Base Bid	Roadway	EROSION CONTROL BLANKETS	38,047	SY		\$ -
15	JSP-121	Base Bid	Roadway	TURF REINFORCEMENT MATS	1,911	SY		\$ -
16	JSP-123	Base Bid	Roadway	AMENDED SOIL STORMWATER CREDIT	1,872	SY		\$ -
17	JSP-124	Base Bid	Roadway	GRASS CHANNEL STORMWATER CREDIT	2,195	LF		\$ -
18	JSP-125	Base Bid	Roadway	BIORETENTION BASIN	1	LS		\$ -
19	JSP-130	Base Bid	Roadway	CLASS A EXCAVATION	22,187	CY		\$ -
20	JSP-131	Base Bid	Roadway	CLASS C EXCAVATION	10	CY		\$ -
21	JSP-132	Base Bid	Roadway	COMPACTING EMBANKMENT	11,934	CY		\$ -
22	JSP-133	Base Bid	Roadway	EXCAVATION ALLOWANCE	\$60,000	ALLOWANCE	-	\$ 60,000.00
23	JSP-134	Base Bid	Roadway	CLASS 3 EXCAVATION	320	CY		\$ -
24	JSP-135A	Base Bid	Roadway	SURCHARGED EMBANKMENTS	1	LS		\$ -
25	JSP-135B	Base Bid	Roadway	SETTLEMENT GAUGE	4	EA		\$ -
26	JSP-136	Base Bid	Roadway	TEMPORARY SHORING	1	LS		\$ -
27	JSP-142B	Base Bid	Roadway	ASPHALTIC CONCRETE OVERLAY, (BP-1)	1342.8	SY		\$ -
28	JSP-151A	Base Bid	Roadway	CONCRETE PAVEMENT (6 IN. NON-REINF)	18.8	SY		\$ -
29	JSP-151B	Base Bid	Roadway	CONCRETE PAVEMENT (7 IN. NON-REINF)	1,613.30	SY		\$ -
30	JSP-151C	Base Bid	Roadway	CONCRETE PAVEMENT (9 IN. NON-REINF)	433.5	SY		\$ -
31	JSP-151D	Base Bid	Roadway	CONCRETE PAVEMENT (12 IN. NON-REINF)	414.3	SY		\$ -
32	JSP-152A	Base Bid	Roadway	CONCRETE CURB TYPE S	860	LF		\$ -
33	JSP-152B	Base Bid	Roadway	CONCRETE GUTTER TYPE B	881	LF		\$ -
34	JSP-152C	Base Bid	Roadway	CURB AND GUTTER TYPE B	91	LF		\$ -
35	JSP-152D	Base Bid	Roadway	4" INTEGRAL CURB TYPE A	150	LF		\$ -
36	JSP-152E	Base Bid	Roadway	INTEGRAL CURB TYPE M	150	LF		\$ -
37	JSP-157	Base Bid	Roadway	6 IN. CONCRETE MEDIAN STRIP	106.2	SY		\$ -
38	JSP-158A	Base Bid	Roadway	CONCRETE TRAFFIC BARRIER, TYPE C	752	LF		\$ -
39	JSP-158B	Base Bid	Roadway	CONCRETE TRAFFIC BARRIER, TYPE C (RETAINING WALL)	205	LF		\$ -
40	JSP-158C	Base Bid	Roadway	CONCRETE TRAFFIC BARRIER, TYPE C TRANSITION SECTION	4	EA		\$ -
41	JSP-158D	Base Bid	Roadway	CONCRETE TRAFFIC BARRIER, TYPE D	443	LF		\$ -
42	JSP-160A	Base Bid	Roadway	CHAIN-LINK FENCE (18 IN.) ON TYPE C TRAFFIC BARRIER	676	LF		\$ -
43	JSP-160B	Base Bid	Roadway	CHAIN-LINK FENCE (42 IN.)	3,310	LF		\$ -
44	JSP-160C	Base Bid	Roadway	CHAIN-LINK FENCE (48 IN.)	108	LF		\$ -
45	JSP-160D	Base Bid	Roadway	CHAIN-LINK FENCE (60 IN.)	5,761	LF		\$ -
46	JSP-160E	Base Bid	Roadway	CHAIN-LINK FENCE (72 IN.)	1,514	LF		\$ -
47	JSP-160F	Base Bid	Roadway	72" PRIVACY SLATS	1,514	LF		\$ -
48	JSP-160G	Base Bid	Roadway	GRAPHICS FENCE RAIL	259	LF		\$ -

**BID FORM: GRAVOIS GREENWAY - ORLANDO'S TO RIVER DES PERES GREENWAY - PHASE 2 -
FEDERAL PROJECT NO. TAP & STP -9901 (632)**

Item #	Bid Item	Bid Category	Type of Work	Description	Quantity	Unit	Unit Cost	Total Cost
49	JSP-161A	Base Bid	Roadway	CHAIN-LINK GUARD ON MSE WALLS	3,223	LF		\$ -
50	JSP-161B	Base Bid	Roadway	CHAIN-LINK GUARD ON CONCRETE WALLS / BARRIERS	741	LF		\$ -
51	JSP-161C	Base Bid	Roadway	CHAIN-LINK GUARD MODIFIED CONCRETE GUTTER TYPE B	1,694	LF		\$ -
52	JSP-162A	Base Bid	Roadway	DRIVE GATE (CHAIN-LINK)	1	EA		\$ -
53	JSP-162B	Base Bid	Roadway	DRIVE GATE (MAINTENANCE ACCESS)	1	EA		\$ -
54	JSP-165A	Base Bid	Roadway	MGS GUARDRAIL	1,293	LF		\$ -
55	JSP-165B	Base Bid	Roadway	MGS GUARDRAIL, 8 FT. POSTS, 6 FT. - 3 IN. SPACING	943	LF		\$ -
56	JSP-165C	Base Bid	Roadway	MGS VERTICAL CONCRETE BARRIER TRANSITION	4	EA		\$ -
57	JSP-165D	Base Bid	Roadway	MGS HEIGHT AND BLOCK TRANSITION	4	EA		\$ -
58	JSP-165E	Base Bid	Roadway	MGS END ANCHOR	2	EA		\$ -
59	JSP-165F	Base Bid	Roadway	TYPE A CRASHWORTHY END TERMINAL (MASH)	4	EA		\$ -
60	JSP-165G	Base Bid	Roadway	MGS GUARDRAIL, 6 FT. POSTS, 3 FT. - 1.5 IN. SPACING, TWO NESTED THRIE BEAMS	63	LF		\$ -
61	JSP-165H	Base Bid	Roadway	GUARDRAIL TYPE D	48	LF		\$ -
62	JSP-170	Base Bid	Roadway	24" CMP	8	LF		\$ -
63	JSP-171A	Base Bid	Roadway	12" CLASS III RCP	191	LF		\$ -
64	JSP-171B	Base Bid	Roadway	15" CLASS III RCP	72	LF		\$ -
65	JSP-171C	Base Bid	Roadway	24" CLASS III RCP	32	LF		\$ -
66	JSP-172	Base Bid	Roadway	12" PRECAST FES	3	EA		\$ -
67	JSP-173A	Base Bid	Roadway	PRECAST CONCRETE DROP INLET 3 FT X 2 FT	42	LF		\$ -
68	JSP-173B	Base Bid	Roadway	PRECAST CONCRETE DROP INLET 5 FT X 3 FT	12	LF		\$ -
69	JSP-173C	Base Bid	Roadway	PRECAST CONCRETE MANHOLE - 48 IN.	24	LF		\$ -
70	JSP-174A	Base Bid	Roadway	GRATE AND BEARING PLATE (3 FT. 1 IN. X 2 FT. 1 IN. OR 940 MM X 635 MM)	5	EA		\$ -
71	JSP-174B	Base Bid	Roadway	GRATE AND BEARING PLATE (5 FT. 1 IN. X 3 FT. 1 IN. OR 1549 MM X 940 MM)	1	EA		\$ -
72	JSP-175	Base Bid	Roadway	6" PVC PIPE	172	LF		\$ -
73	JSP-176	Base Bid	Roadway	YARD DRAIN	9	EA		\$ -
74	JSP-177	Base Bid	Roadway	FRENCH DRAIN	590	LF		\$ -
75	JSP-180A	Base Bid	Roadway	TYPE 1 ROCK DITCH LINER	1,661	SY		\$ -
76	JSP-180B	Base Bid	Roadway	TYPE 3 ROCK DITCH LINER	193	SY		\$ -
77	JSP-180C	Base Bid	Roadway	TYPE 4 ROCK DITCH LINER	479	SY		\$ -
78	JSP-181A	Base Bid	Roadway	ROCK LINING	23	CY		\$ -
79	JSP-181B	Base Bid	Roadway	ROCK BLANKET	126	CY		\$ -
80	611-60.10	Base Bid	Roadway	SLOPE PROTECTION	181	SY		\$ -
81	616-99.01	Base Bid	Roadway	TEMPORARY TRAFFIC CONTROL	1	LS		\$ -
82	JSP-140A	Base Bid	Bike/Ped	TYPE 5 AGGREGATE FOR BASE (4 INCHES THICK)	14,429	SY		\$ -
83	JSP-140B	Base Bid	Bike/Ped	TYPE 5 AGGREGATE FOR BASE (6 INCHES THICK)	9,191	SY		\$ -
84	JSP-140C	Base Bid	Bike/Ped	TYPE 5 AGGREGATE FOR BASE (8 INCHES THICK)	592	SY		\$ -
85	JSP-140D	Base Bid	Bike/Ped	TYPE 5 AGGREGATE FOR BASE (10 INCHES THICK)	424	SY		\$ -
86	JSP-142A	Base Bid	Bike/Ped	BITUMINIOUS PAVEMENT MIXTURE PG64-22, (BP-1)	768.2	TONS		\$ -
87	JSP-142C	Base Bid	Bike/Ped	BITUMINIOUS PAVEMENT MIXTURE PG64-22, (BASE)	1,318.90	TONS		\$ -
88	JSP-143	Base Bid	Bike/Ped	COLD MILL	1,039	SY		\$ -
89	JSP-144	Base Bid	Bike/Ped	PRIME COAT	4,681	GAL		\$ -
90	JSP-145	Base Bid	Bike/Ped	TACK COAT	607	GAL		\$ -
91	JSP-153A	Base Bid	Bike/Ped	CONCRETE FLUSH CURB - TRAIL EDGER	11,805	LF		\$ -
92	JSP-153B	Base Bid	Bike/Ped	CONCRETE FLUSH CURB - IN LANDSCAPING	751	LF		\$ -
93	JSP-153C	Base Bid	Bike/Ped	CONCRETE FLUSH CURB - IN PAVEMENT	123	LF		\$ -
94	JSP-154	Base Bid	Bike/Ped	CONCRETE SIDEWALK, 4 IN	13.9	SY		\$ -
95	JSP-155	Base Bid	Bike/Ped	TRUNCATED DOMES	92.0	SF		\$ -
96	JSP-156	Base Bid	Bike/Ped	CONCRETE CURB RAMP	44.8	SY		\$ -

**BID FORM: GRAVOIS GREENWAY - ORLANDO'S TO RIVER DES PERES GREENWAY - PHASE 2 -
FEDERAL PROJECT NO. TAP & STP -9901 (632)**

Item #	Bid Item	Bid Category	Type of Work	Description	Quantity	Unit	Unit Cost	Total Cost
97	JSP-502	Base Bid	Bike/Ped	PRECAST CONCRETE UNDERPASS	64	LF		\$ -
98	JSP-720A	Base Bid	Bike/Ped	MECHANICALLY STABILIZED EARTH WALL SYSTEMS (SMALL BLOCK WALLS)	35,187	SF		\$ -
99	JSP-720B	Base Bid	Bike/Ped	MECHANICALLY STABILIZED EARTH WALL SYSTEMS (LARGE BLOCK WALLS)	10,772	SF		\$ -
								\$ -
100	902-02.13	Base Bid	Signing/ Stripping/ Signal	SIGNAL HEAD, TYPE 3S	3	EA		\$ -
101	902-04.14	Base Bid	Signing/ Stripping/ Signal	SIGNAL HEAD, TYPE 4C	1	EA		\$ -
102	902-08.11	Base Bid	Signing/ Stripping/ Signal	SIGNAL HEAD, TYPE 1S, PEDESTRIAN	2	EA		\$ -
103	902-08.33	Base Bid	Signing/ Stripping/ Signal	SH-FLAT SHEET - SIGNAL SIGN	2	EA		\$ -
104	902-08.34	Base Bid	Signing/ Stripping/ Signal	SIGNAL SIGN, MOUNTING HARDWARE	2	EA		\$ -
105	902-27.08	Base Bid	Signing/ Stripping/ Signal	SIGNAL POST, 8 FT.	2	EA		\$ -
106	902-27.15	Base Bid	Signing/ Stripping/ Signal	SIGNAL POST, 15 FT.	1	EA		\$ -
107	902-36.02	Base Bid	Signing/ Stripping/ Signal	SPAN WIRE ASSEMBLY, MESSENGER WITH TETHER	240	LF		\$ -
108	902-49.20	Base Bid	Signing/ Stripping/ Signal	DETECTOR, PUSHBUTTON	2	EA		\$ -
109	902-53.00	Base Bid	Signing/ Stripping/ Signal	CONDUIT, 3", TRENCH WITH TRACER WIRE	67	LF		\$ -
110	902-73.00	Base Bid	Signing/ Stripping/ Signal	CONDUIT, 3", PUSHED, TRENCH WITH TRACER WIRE	171	LF		\$ -
111	902-83.08	Base Bid	Signing/ Stripping/ Signal	CABLE, 16 AWG 2 CONDUCTOR	390	LF		\$ -
112	902-83.09	Base Bid	Signing/ Stripping/ Signal	CABLE, 16 AWG 3 CONDUCTOR	260	LF		\$ -
113	902-83.10	Base Bid	Signing/ Stripping/ Signal	CABLE, 16 AWG 5 CONDUCTOR	390	LF		\$ -
114	902-83.11	Base Bid	Signing/ Stripping/ Signal	CABLE, 16 AWG 7 CONDUCTOR	1,240	LF		\$ -
115	902-88.11	Base Bid	Signing/ Stripping/ Signal	PREFORMED, PULL BOX CLASS 2	2	EA		\$ -
116	902-91.00	Base Bid	Signing/ Stripping/ Signal	BASE, CONCRETE	4.6	CY		\$ -
117	JSP-300	Base Bid	Signing/ Stripping/ Signal	RELOCATE EXIST. SIGNAL EQUIPMENT	1	EA		\$ -
118	JSP-301A	Base Bid	Signing/ Stripping/ Signal	REMOVE EXIST. SIGNAL EQUIPMENT (BAYLESS)	1	EA		\$ -
119	JSP-301B	Base Bid	Signing/ Stripping/ Signal	REMOVE EXIST. SIGNAL EQUIPMENT (RIVER CITY)	1	EA		\$ -
120	JSP-302	Base Bid	Signing/ Stripping/ Signal	DRILL PULLBOX (1 OPENING)	2	EA		\$ -
121	JSP-303	Base Bid	Signing/ Stripping/ Signal	BLANK-OUT SIGN (NO TURN ON RED)	1	EA		\$ -
122	JSP-304	Base Bid	Signing/ Stripping/ Signal	MODIFY EXISTING SIGNAL CONTROLLER	1	EA		\$ -
123	JSP-305	Base Bid	Signing/ Stripping/ Signal	RE-AIM VIDEO DETECTION CAMERAS	1	LS		\$ -
124	JSP-606A	Base Bid	Signing/ Stripping/ Signal	SIGNS	51	SF		\$ -
125	JSP-606B	Base Bid	Signing/ Stripping/ Signal	GROUND MOUNTED SIGN POST	8	EA		\$ -
126	JSP-607A	Base Bid	Signing/ Stripping/ Signal	30" SOLID WHITE PAVEMENT MARKING	132	LF		\$ -
127	JSP-607B	Base Bid	Signing/ Stripping/ Signal	24" SOLID WHITE PAVEMENT MARKING	81	LF		\$ -
128	JSP-607C	Base Bid	Signing/ Stripping/ Signal	4" SOLID WHITE PAVEMENT MARKING	1,767	LF		\$ -
129	JSP-607D	Base Bid	Signing/ Stripping/ Signal	4" INTERMITTENT WHITE PAVEMENT MARKING	90	LF		\$ -
130	JSP-607E	Base Bid	Signing/ Stripping/ Signal	6" SOLID YELLOW PAVEMENT MARKING	52	LF		\$ -
131	JSP-607F	Base Bid	Signing/ Stripping/ Signal	4" SOLID YELLOW PAVEMENT MARKING	8,492	LF		\$ -
132	JSP-607G	Base Bid	Signing/ Stripping/ Signal	LEFT TURN ARROW MARKING	1	EA		\$ -
133	JSP-607H	Base Bid	Signing/ Stripping/ Signal	COMBINATION LEFT/RIGHT ARROW MARKING	3	EA		\$ -
134	JSP-608	Base Bid	Signing/ Stripping/ Signal	HEIGHT RESTRICTION BAR	2	EA		\$ -
135	9011010	Base Bid	Signing/ Stripping/ Signal	RELOCATED POLE	5	EA		\$ -
136	9013001	Base Bid	Signing/ Stripping/ Signal	CONDUIT, 1 IN. RIGID, IN TRENCH	0	LF		\$ -
137	9013003	Base Bid	Signing/ Stripping/ Signal	CONDUIT, 3 IN. RIGID, IN TRENCH	528	LF		\$ -
138	9013502	Base Bid	Signing/ Stripping/ Signal	CONDUIT, 2 IN. RIGID, MEDIAN	345	LF		\$ -
139	9014003	Base Bid	Signing/ Stripping/ Signal	CONDUIT, 3 IN. RIGID, PUSHED	35	LF		\$ -
140	9015010	Base Bid	Signing/ Stripping/ Signal	TRENCHING TYPE I	1,431	LF		\$ -
141	9016110	Base Bid	Signing/ Stripping/ Signal	PULL BOX, PREFORMED CLASS 1	8	EA		\$ -
142	9016111	Base Bid	Signing/ Stripping/ Signal	PULL BOX, PREFORMED CLASS 2	3	EA		\$ -
143	9017407	Base Bid	Signing/ Stripping/ Signal	CABLE-CONDUIT, 1 IN., 2 CONDUCTORS AND 1 BARE NEUTRAL, 8 AWG	2,340	LF		\$ -
144	9018230	Base Bid	Signing/ Stripping/ Signal	POLE FOUNDATION (30 FT. OR 9.0 M MOUNTING HEIGHT)	0	EA		\$ -

**BID FORM: GRAVOIS GREENWAY - ORLANDO'S TO RIVER DES PERES GREENWAY - PHASE 2 -
FEDERAL PROJECT NO. TAP & STP -9901 (632)**

Item #	Bid Item	Bid Category	Type of Work	Description	Quantity	Unit	Unit Cost	Total Cost
145	9018245	Base Bid	Signing/ Striping/ Signal	POLE FOUNDATION (45 FT. OR 13.5 M MOUNTING HEIGHT)	1	EA		\$ -
146	9019400	Base Bid	Signing/ Striping/ Signal	TEMPORARY LIGHTING	1	LS		\$ -
147	JSP-902	Base Bid	Signing/ Striping/ Signal	REMOVE CABLE FROM CONDUIT	4,383	LF		\$ -
148	JSP-903	Base Bid	Signing/ Striping/ Signal	LIGHT POLE 40 Ft. or 12.2M, TYPE MB	2	EA		\$ -
149	206-10.00	Base Bid	Bridge/Structural	CLASS 1 EXCAVATION	135	CY		\$ -
150	216-35.00	Base Bid	Bridge/Structural	PARTIAL REMOVAL OF CULVERT CONCRETE	1	LS		\$ -
151	605-20.10	Base Bid	Bridge/Structural	STRUCTURAL UNDERDRAIN	300	LF		\$ -
152	701-11.06	Base Bid	Bridge/Structural	DRILLED SHAFTS (4 FT. 0 IN. DIA.)	525	LF		\$ -
153	701-13.00	Base Bid	Bridge/Structural	VIDEO CAMERA INSPECTION	10	EA		\$ -
154	701-14.00	Base Bid	Bridge/Structural	FOUNDATION INSPECTION HOLES	100	LF		\$ -
155	701-16.00	Base Bid	Bridge/Structural	SONIC LOGGING TESTING	10	EA		\$ -
156	703-20.09	Base Bid	Bridge/Structural	CLASS B CONCRETE (RETAINING WALLS)	478.8	CY		\$ -
157	703-40.01	Base Bid	Bridge/Structural	CLASS B-1 CONCRETE	137.0	CY		\$ -
158	703-40.03	Base Bid	Bridge/Structural	CLASS B-1 CONCRETE (SUBSTRUCTURE)	247.2	CY		\$ -
159	703-40.41	Base Bid	Bridge/Structural	CLASS B-1 CONCRETE (CULVERTS)	11.2	CY		\$ -
160	703-42.12	Base Bid	Bridge/Structural	SLAB ON STEEL	1,204	SY		\$ -
161	706-10.00	Base Bid	Bridge/Structural	REINFORCING STEEL	5,620	LB		\$ -
162	706-10.30	Base Bid	Bridge/Structural	REINFORCING STEEL (CULVERTS)	1,570	LB		\$ -
163	706-10.40	Base Bid	Bridge/Structural	REINFORCING STEEL (RETAINING WALL)	1,150	LB		\$ -
164	706-10.60	Base Bid	Bridge/Structural	REINFORCING STEEL (BRIDGES)	48,850	LB		\$ -
165	710-10.00	Base Bid	Bridge/Structural	REINFORCING STEEL (EPOXY COATED)	37,670	LB		\$ -
166	711-02.00	Base Bid	Bridge/Structural	PROTECTIVE COATING - CONCRETE BENTS AND PIERS (EPOXY)	1	LS		\$ -
167	711-05.00	Base Bid	Bridge/Structural	TEMPORARY COATING - CONCRETE BENTS AND PIERS (WEATHERING STEEL)	1	LS		\$ -
168	715-10.01	Base Bid	Bridge/Structural	VERTICAL DRAIN AT END BENTS	2	EA		\$ -
169	JSP-500A	Base Bid	Bridge/Structural	PREFABRICATED PEDESTRIAN BRIDGE TRUSS (80') BRIDGE SUPPLIER _____ (Contractor must fill in blank above)	5	EA		\$ -
170	JSP-500B	Base Bid	Bridge/Structural	PREFABRICATED PEDESTRIAN BRIDGE TRUSS (100') BRIDGE SUPPLIER _____ (Contractor must fill in blank above)	2	EA		\$ -
171	JSP-500C	Base Bid	Bridge/Structural	PREFABRICATED PEDESTRIAN BRIDGE TRUSS (55') BRIDGE SUPPLIER _____ (Contractor must fill in blank above)	1	EA		\$ -
172	JSP-500D	Base Bid	Bridge/Structural	PREFABRICATED PEDESTRIAN BRIDGE TRUSS (176') BRIDGE SUPPLIER _____ (Contractor must fill in blank above)	1	EA		\$ -
173	JSP-500E	Base Bid	Bridge/Structural	PREFABRICATED PEDESTRIAN BRIDGE TRUSS (72') BRIDGE SUPPLIER _____ (Contractor must fill in blank above)	1	EA		\$ -
174	JSP-700	Base Bid	Bridge/Structural	GROUND IMPROVEMENT	1	LS		\$ -
FEDERAL REIMBURSEMENT SUBTOTAL=								

**BID FORM: GRAVOIS GREENWAY - ORLANDO'S TO RIVER DES PERES GREENWAY - PHASE 2 -
FEDERAL PROJECT NO. TAP & STP -9901 (632)**

Item #	Bid Item	Bid Category	Type of Work	Description	Quantity	Unit	Unit Cost	Total Cost
NON-FEDERAL REIMBURSEMENT BASE BID ITEMS								
175	JSP-400	Base Bid / Non-Participating	Landscape/ Streetscape	TREE REMOVAL	27	EA		\$ -
176	JSP-401	Base Bid / Non-Participating	Landscape/ Streetscape	LAWN (Includes Seeding and Mulching)	270,903	SF		\$ -
177	JSP-402	Base Bid / Non-Participating	Landscape/ Streetscape	MULCH	345	CY		\$ -
178	JSP-403	Base Bid / Non-Participating	Landscape/ Streetscape	PLANTING SOIL	715	CY		\$ -
179	JSP-404	Base Bid / Non-Participating	Landscape/ Streetscape	NATIVE SEED MIX	48,305	SF		\$ -
180	JSP-405A	Base Bid / Non-Participating	Landscape/ Streetscape	CANOPY TREES (2.5" Caliper)	31	EA		\$ -
181	JSP-405B	Base Bid / Non-Participating	Landscape/ Streetscape	SMALL FLOWERING TREES (1.5" Caliper)	5	EA		\$ -
182	JSP-405C	Base Bid / Non-Participating	Landscape/ Streetscape	EVERGREEN TREES (8' Tall)	22	EA		\$ -
183	JSP-405D	Base Bid / Non-Participating	Landscape/ Streetscape	LARGE SHRUBS (7 gallon)	54	EA		\$ -
184	JSP-405E	Base Bid / Non-Participating	Landscape/ Streetscape	MEDIUM SHRUBS (5 gallon)	94	EA		\$ -
185	JSP-405F	Base Bid / Non-Participating	Landscape/ Streetscape	SMALL SHRUBS (1 gallon)	63	EA		\$ -
186	JSP-405G	Base Bid / Non-Participating	Landscape/ Streetscape	PERENNIAL / NATIVE GRASS (4" Pots)	2,457	EA		\$ -
187	JSP-405H	Base Bid / Non-Participating	Landscape/ Streetscape	PERENNIAL / NATIVE GRASS (Plugs)	8,947	EA		\$ -
188	JSP-405I	Base Bid / Non-Participating	Landscape/ Streetscape	BULBS	9,195	EA		\$ -
189	JSP-406A	Base Bid / Non-Participating	Landscape/ Streetscape	TREE PROTECTION FENCE	2,755	LF		\$ -
190	JSP-406B	Base Bid / Non-Participating	Landscape/ Streetscape	TREE PROTECTION MULCH	161.5	CY		\$ -
191	JSP-407	Base Bid / Non-Participating	Landscape/ Streetscape	BOULDER WALLS	241	LF		\$ -
192	JSP-409	Base Bid / Non-Participating	Landscape/ Streetscape	SCATTERED BOULDERS	32	LF		\$ -
193	JSP-600	Base Bid / Non-Participating	Landscape/ Streetscape	RECYCLED GLASS SEAT WALL CAP	47	SF		\$ -
194	JSP-601A	Base Bid / Non-Participating	Landscape/ Streetscape	BENCHES	3	EA		\$ -
195	JSP-601B	Base Bid / Non-Participating	Landscape/ Streetscape	TRASH RECEPTACLES	2	EA		\$ -
196	JSP-602A	Base Bid / Non-Participating	Landscape/ Streetscape	REMOVABLE BOLLARDS	9	EA		\$ -
197	JSP-602B	Base Bid / Non-Participating	Landscape/ Streetscape	VISUAL DETERRENT DELINEATORS	30	EA		\$ -
198	JSP-603	Base Bid / Non-Participating	Landscape/ Streetscape	TRAIL COUNTER	1	EA		\$ -
199	JSP-604	Base Bid / Non-Participating	Landscape/ Streetscape	METAL LETTERS (Donor Bands)	3	EA		\$ -
200	JSP-800A	Base Bid / Non-Participating	Landscape/ Streetscape	PAINTING (Underpass)	150	SF		\$ -
201	JSP-800B	Base Bid / Non-Participating	Landscape/ Streetscape	PAINTING (Germania Walls)	352	SF		\$ -
202	JSP-801	Base Bid / Non-Participating	Landscape/ Streetscape	TRESPA 13mm GRAPHICS	1,550	SF		\$ -
203	JSP-802	Base Bid / Non-Participating	Landscape/ Streetscape	POWDER COATED LETTERS	231	EA		\$ -
204	JSP-803	Base Bid / Non-Participating	Landscape/ Streetscape	PARGE COAT & GRINDING	352	SF		\$ -
205	JSP-605A	Base Bid / Non-Participating	Signing/ Striping/ Signal	WAYFINDING SIGN - IX-3	2	EA		\$ -
206	JSP-605B	Base Bid / Non-Participating	Signing/ Striping/ Signal	WAYFINDING SIGN - GX-4	2	EA		\$ -
207	JSP-605C	Base Bid / Non-Participating	Signing/ Striping/ Signal	WAYFINDING SIGN - GX-5	4	EA		\$ -
208	JSP-605D	Base Bid / Non-Participating	Signing/ Striping/ Signal	WAYFINDING SIGN - GX-6	1	EA		\$ -
209	JSP-605E	Base Bid / Non-Participating	Signing/ Striping/ Signal	WAYFINDING SIGN - GX-9f	1	EA		\$ -
210	JSP-605F	Base Bid / Non-Participating	Signing/ Striping/ Signal	WAYFINDING SIGN - GX-99	2	EA		\$ -
211	JSP-609	Base Bid / Non-Participating	Signing/ Striping/ Signal	REPUBLIC RECYCLING NODE SIGNAGE	1	LS		\$ -
212	JSP-900	Base Bid / Non-Participating	Signing/ Striping/ Signal	LED LIGHTING SOLAR POWER SYSTEM	1	EA		\$ -
213	JSP-901	Base Bid / Non-Participating	Signing/ Striping/ Signal	LUMINAIRE, LED (UnderPass), EMBEDDED	10	EA		\$ -
214	JSP-904	Base Bid / Non-Participating	Signing/ Striping/ Signal	RIVER DES PERES BRIDGE LIGHTING	5	EA		\$ -
215	JSP-25	Base Bid / Non-Participating		PERMIT ALLOWANCE	\$25,000	ALLOWANCE		\$ 25,000.00
NON-FEDERAL REIMBURSEMENT SUBTOTAL =							\$	-
BASE BID AMOUNT (FEDERAL + NON-FEDERAL) =							\$	-

JOB SPECIAL PROVISIONS & SUPPLEMENTAL INFORMATION

**GREAT RIVERS GREENWAY – GRAVOIS GREENWAY
ORLANDO’S TO RIVER DES PERES GREENWAY – PHASE 2
TAP + STP 9901(632)**

TABLE OF CONTENTS – VOLUME 2

JSP-01	Federal and General	
JSP-02	Emergency Provisions and Incident Management	
JSP-03	Contract Liquidated Damages	
JSP-04	Project Contact for Contractor/Bidder Questions	
JSP-05	ADA Compliance and Final Acceptance of Constructed Facilities	
JSP-06	On the Job Training	
JSP-07	Workzone Traffic Management Plan	
JSP-08	Utilities	
JSP-09	MoDOT LPA Inspection and Oversight	
JSP-10	MDNR State Historic Preservation Office Section 106 Clearance	
JSP-11	NEPA Classification Document	
JSP-12	MSD Permit	
JSP-13	St. Louis County Permits	
JSP-14	City of St. Louis Permits	
JSP-15	City of St. Louis Floodplain Development Permit	
JSP-16	Contract Safety Addendum	
JSP-17	Special Conditions	
JSP-18	Guidelines for Obtaining Environmental Clearance for Project Specific Locations	
JSP-19	USACE Permit Letter	
JSP-20	Acceptance of Structural Steel	
JSP-21	Acceptance of Precast Concrete Members and Panels	
JSP-22	Notification of Property Owners	
JSP-23	Floodplain Development Permit for Work at Bayless (Gravois Creek)	
JSP-24	MDNR Land Disturbance Permit	
JSP-25	Permit Allowance	
JSP-50	MoDOT Permit	
JSP-51	UPRR Railway Requirements	
JSP-52	Ameren MO Power Supply Coordination	
JSP-53	Ameren Transmission Coordination	
JSP-54	Working in the River des Peres	
JSP-55	AT&T Coordination along Avenue I	
JSP-56	Ameren Coordination at Tower 61N	

JSP-57	Coordination with Phase 3 Construction	
JSP-100	Mobilization	
JSP-101	Contractor Surveying and Staking	
JSP-102	Protection and Restoration of the Site	
JSP-103	Clearing and Grubbing	
JSP-104	Removal of Improvements and Temporary Protection	
JSP-110	Storm Water Pollution Prevention Program	
JSP-111	Stormwater Compliance Requirements	
JSP-112	Silt Barrier	
JSP-113	Sediment Removal	
JSP-114	Inlet Protection	
JSP-115	Temporary Seeding and Mulching	
JSP-116	Ditch Check	
JSP-117	Washdown Station	
JSP-118	Construction Entrance	
JSP-119	Temporary Contractor Access	
JSP-120	Erosion Control Blankets	
JSP-121	Turf Reinforcement Mat	
JSP-123	Amended Soil Stormwater Credit	
JSP-124	Grass Channel Stormwater Credit	
JSP-125	Bioretention Basin	
JSP-130	Class A Excavation	
JSP-131	Class C Excavation	
JSP-132	Compacting Embankment	
JSP-133	Excavation Allowance	
JSP-134	Excavation for Structures	
JSP-135	Surcharged Embankments	
JSP-136	Temporary Shoring	
JSP-140	Aggregate	
JSP-141	Contractor Submittals for Bituminous Pavement	
JSP-142	Bituminous Pavement Mixture PG64-22	
JSP-143	Cold Mill	
JSP-144	Prime Coat	
JSP-145	Tack Coat	
JSP-150	Contractor Submittals for Concrete Mixes	
JSP-151	Concrete Pavement (Non-Reinforced)	
JSP-152	Concrete Curb, Curb and Gutter, and Gutter	
JSP-153	Concrete Flush Curb	
JSP-154	Concrete Sidewalk, 4 inches	

JSP-155	Truncated Domes	
JSP-156	Concrete Curb Ramp	
JSP-157	6-inch Concrete Median Strip	
JSP-158	Concrete Traffic Barrier	
JSP-160	Chain-Link Fence	
JSP-161	Chain-Link Guard	
JSP-162	Drive Gate	
JSP-165	Guardrail	
JSP-170	Corrugated Metal Pipe (CMP)	
JSP-171	Reinforced Concrete Pipe (RCP)	
JSP-172	Precast Concrete Flared End Section (FES)	
JSP-173	Precast Drop Inlet and Manhole	
JSP-174	Grate and Bearing Plate	
JSP-175	Polyvinyl Chloride (PVC) Pipe	
JSP-176	Yard Drain	
JSP-177	French Drain	
JSP-180	Rock Ditch Liner	
JSP-181	Rock Blanket	
JSP-200	Temporary Traffic Control	
JSP-201	Work in the Vicinity of a Grade Crossing (MUTCD 6G.18)	
JSP-300	Relocate Existing Signal Equipment	
JSP-301	Remove Existing Signal Equipment	
JSP-302	Drill Pullbox (1 Opening)	
JSP-303	Blank-out Sign	
JSP-304	Modify Existing Signal Controller	
JSP-305	Re-aim Video Detection Cameras	
JSP-400	Tree Removal	
JSP-401	Lawn	
JSP-402	Mulch	
JSP-403	Planting Soil	
JSP-404	Native Seed Mix	
JSP-405	Trees, Shrubs and Perennials	
JSP-406	Tree Protection Fence and Mulch	
JSP-407	Boulder Walls	
JSP-408	Temporary Tree Protection	
JSP-409	Scattered Boulders	
JSP-500	Pre-Fabricated Pedestrian Bridge Truss	

JSP-502	Precast Concrete Underpass	
JSP-600	Recycled Glass Seat Wall Cap	
JSP-601	Site Furnishings	
JSP-602	Bollards	
JSP-603	Trail Counter	
JSP-604	Metal Letters (Donor Bands)	
JSP-605	Wayfinding Signage	
JSP-606	Signs	
JSP-607	Pavement Marking	
JSP-608	Height Restriction Bar	
JSP-609	Republic Recycling Node Signage	
JSP-700	Ground Improvement	
JSP-701	Ground Improvement (Delegated Design Walls)	
JSP-720	Mechanically Stabilized Earth Wall Systems	
JSP-721	MSE and CIP Wall Coordination with Utilities	
JSP-722	MSE Walls 15 and 16 below Weber Road	
JSP-800	Painting	
JSP-801	Trespa Graphics	
JSP-802	Powder Coated Letters	
JSP-803	Prime Coat & Grinding	
JSP-900	LED Lighting Solar Power System	
JSP-901	Luminaire, LED (Underpass), Embedded	
JSP-902	Remove Cable from Conduit	
JSP-903	Light Pole, 40Ft. or 12.2M, Type MB	
JSP-904	River des Peres Bridge Lighting	
Appendices		
1. Geotechnical Investigation for Great Rivers Greenway, Grant's Trail Extension to River des Peres Greenway, dated January 19, 2018		
2. MoDOT Bridge Plans: Weber Road Underpass, 28 pages total		
3. MoDOT Stormwater Pollution Prevention Plan, dated August 2014		

JSP 25 – PERMIT ALLOWANCE

1.01 SUMMARY

- A. The permit allowance shall be used to reimburse the contractor for fees required by the permitting agencies.
- B. Acceptable permitting fees include reimbursement to the following agencies:
 - a. Metropolitan St. Louis Sewer District
 - b. St. Louis County (Special Use Permit, Land Disturbance, Building)
 - c. St. Louis City (Street Department, Building Department)
- C. Additional permitting fees may be covered by the permit allowance, but advance approval from the Developer's Representative will be required.
- D. Fees for traffic control, inspection services and delivery are excluded from the permit allowance reimbursement.

1.02 EXECUTION

- A. Contractor shall provide a copy of the original receipt from the permitting agency during submission of pay application to receive reimbursement. The following information shall be included:
 - a. Permitting agency
 - b. Date
 - c. Description of permit received
 - d. Cost
 - e. Copy of the permit
- B. The allowance shall be adjusted by the actual permitting receipts received.

1.03 PAYMENT

- A. Payment for permitting fees shall be paid for under item number **JSP-25, "Permit Allowance"**.

<< END OF JSP-25 >>

JSP-121 – TURF REINFORCEMENT MAT

01. SCOPE

This work shall include all labor, equipment and material necessary to complete Turf Reinforcement Mat (TRM).

02. MATERIALS

All materials and construction requirements shall conform to the Missouri Department of Transportation Standard Specifications for Highway Construction (Section 806.90, 1011 and Division 1000).

TRM will meet requirements established by the Erosion Control Technology Council (ECTC) Specification and the U.S. Department of Transportation, Federal Highway Administration's (FHWA) *Standard Specifications For Construction of Roads and Bridges on Federal Highway Projects, FP-03 2003 Section 713.18* as a *Type 5.A Permanent Turf Reinforcement Mat*.

03. EXECUTION

All work shall conform to the Missouri Department of Transportation (MoDOT) Standard Specifications for Highway Construction. Complete work in accordance with MoDOT Section 806.90 and other applicable sections unless otherwise noted in these job special provisions.

In accordance with MoDOT Section 806.90.3, TRMs shall be installed and maintained according to the manufacturer's recommendations, including anchor trenches, seams and terminal ends. Shingle and overlap consecutive rolls in the direction of flow. Slope installations will provide a minimum of 1.3 stake/staple per square yard within the body of the TRM. Channel installations will provide a minimum of 1.7 stake/staple per square yard within the body of the TRM.

Trees, shrubs, plugs and potted plants shall be installed through the TRM in accordance with the manufacturer's recommendation for live plant installation through TRM.

Where TRM is being installed around existing trees, the TRM shall be cut and stapled as follows. Cut a single cut parallel to the predominant flow direction from the trees position to the nearest edge of the TRM. Fold flaps of TRM back into place around the tree. A "V" cut at the end of the single cut may be used, if necessary, to allow for laying the TRM flat. Staple/stake cuts closed starting as close to the tree trunk as possible

and continue placing staples every 4" working outward until all cuts have been securely fastened closed. Additional TRM may be required to protect all exposed soil. Provide overlap based on appropriate TRM Seam Detail.

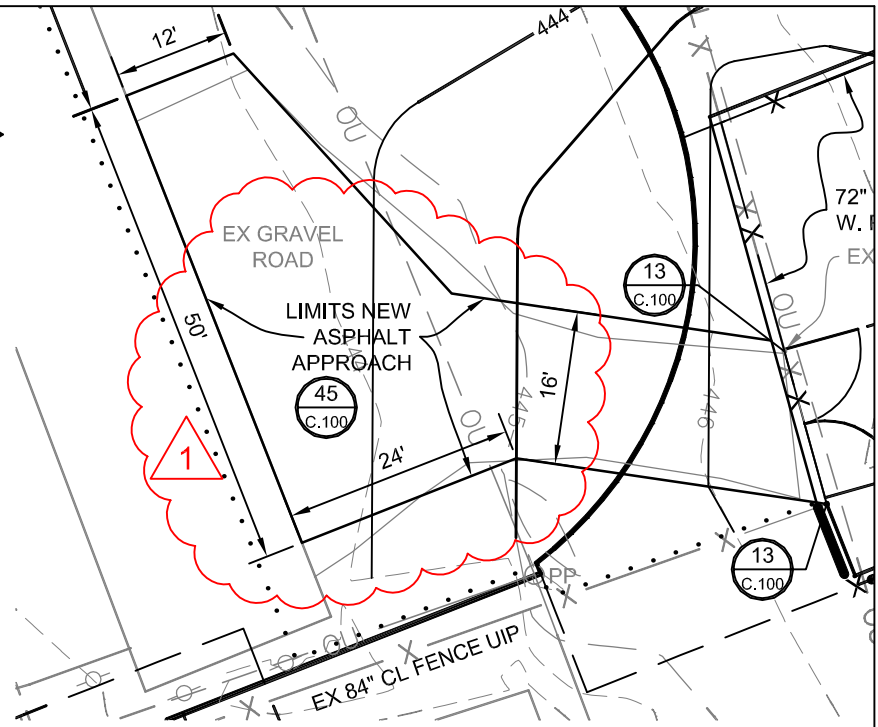
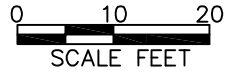
04. METHOD OF MEASUREMENT

Measurement of Turf Reinforcement Mat will be in accordance with MoDOT Section 806.90.4.

05. BASIS OF PAYMENT

Payment for "Turf Reinforcement Mat" will be made per square yard at the contract unit bid price and paid for under item number: JSP-121.

<< End of JSP-121 >>



ADDENDUM TO C.202

ON SHEETS C.205, C.221, C.605 AND C.606:
WHERE IT IS NOTED TO COORDINATE
WITH AMEREN FOR CONSTRUCTION OF
TOWERS 61N AND 61S AND REMOVAL OF
TOWER 61, "SEE JSP ***" SHALL BE
REPLACED WITH "SEE JSP 56"

ADDENDUM TO C.205, C.221, C.605 AND C.606

General Notes:

Design Specifications:

2002 AASHTO LFD (17th Ed.) Standard Specifications (Section 5, ASD Design)
Seismic Performance Category B
Acceleration Coefficient = 0.12

Design Loading:

See Wall Bearing Capacity Summary table for internal angle of friction, estimated backslope angle and active earth pressure coefficient for retained backfill material to be retained by the mechanically stabilized earth wall system. Table also includes allowable bearing capacity (based on 8-ft grid) and allowable bearing capacity (based on 8-ft grid) with 1-ft ground improvement (see JPS-701).

Actual $\phi_r \geq 34^\circ$ for the select granular backfill (reinforced backfill and wedge area backfill) for structural systems.

Design $\phi_r = 34^\circ$ for the select granular backfill (reinforced backfill) only for structural systems.

See Wall Bearing Capacity Summary table for allowable bearing capacity for unimproved ground and improved ground (per JSP 701).

Factor of safety shall be 2.0 for overturning and 1.5 for sliding.

For seismic design the factor of safety shall be 1.5 for overturning and 1.1 for sliding.

ADDENDUM TO C.600

THE FOLLOWING NOTES SHALL BE ADDED:

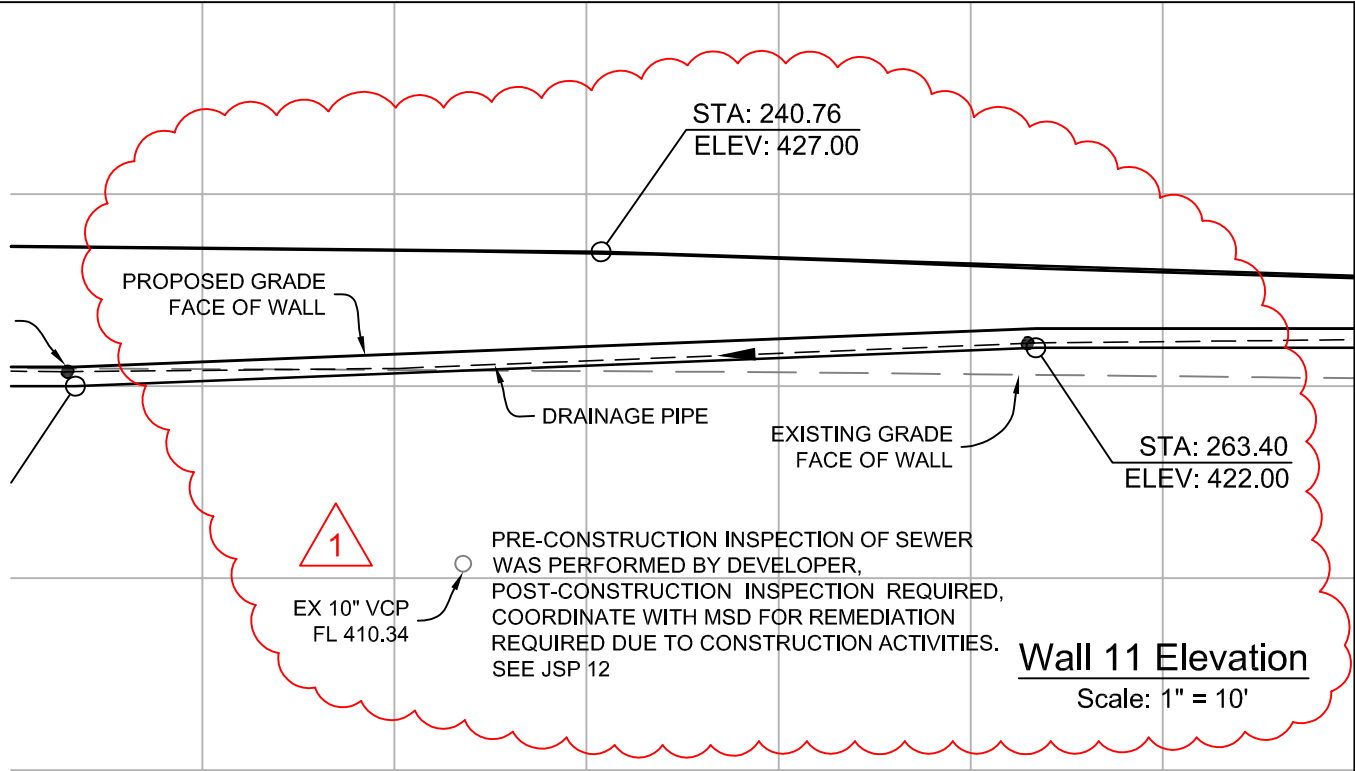
Notes regarding JSP 701 - Ground Improvement (Delegated Design Walls)

- Based on Borings P-24, P-26, B-15 and B-16, it is anticipated that Ground Improvement per JSP 701 will be required for portions of Wall 15 and all of Walls 23 and 29.
- Anticipated limits of Ground Improvement are shown in the cross sections (C.408, C.409, C.416 and C.417).
- Anticipated limits of Ground Improvement are not shown in the Typical Sections for Walls 15 and 23.
- Anticipated limits of Ground Improvements are not shown in the Wall Plan and Elevation sheets.

ADDENDUM TO C.600



ADDENDUM 1



ADDENDUM TO C.606

ON SHEET C.205: WHERE IT IS NOTED THAT "PRE-CONSTRUCTION INSPECTION OF SEWER WAS PERFORMED BY DEVELOPER, POST-CONSTRUCTION INSPECTION REQUIRED, COORDINATE WITH MSD FOR REMEDIATION REQUIRED DUE TO CONSTRUCTION ACTIVITIES", "SEE JSP ***" SHALL BE REPLACED WITH "SEE JSP 12"

ADDENDUM TO C.205