

*Sam Page*  
*County Executive*



*Daniel W. Dreisewerd, P.E., PTOE*  
*Acting Director*

*Stephanie Leon Streeter, P.E.*  
*Deputy Director*

August 22, 2019

**ADDENDUM NO. 2**

Notice to All Persons and Firms Proposing  
to Submit a Bid or Furnish Materials for  
Allen Road Bridge No. 329  
St. Louis County Project No. CR-1274  
Federal Project No. STP-4900(634)

The construction contract for this project has been revised as follows:

No. 1

**Replace** the existing Notice to Contractors with the attached Notice to Contractors, which revises the letting date to September 11, 2019.

No. 2

**Replace** JSP No. 200.30.7 "Excavation and Backfill for Unsuitable Material" with the attached JSP 200.30.7 "Excavation and Backfill for Unsuitable Material", which corrects the basis of payment to a contingent price of \$100 per C.Y.

No. 3

**Add** "Exhibit A" to the supplemental documents section. Exhibit A is the plans for the Existing Structure.

**ATTENTION BIDDERS: THE ADDENDUM ACKNOWLEDGEMENT IN THE BID DOCUMENTS MUST BE COMPLETED AND SUBMITTED WITH ALL BID PROPOSALS.**

A handwritten signature in blue ink, appearing to read "Joseph W. Kulesa".

Joseph W. Kulesa, P.E.  
Division Manager, Design

JWK/WAS/jlh

*Attachments: Notice to Contractors, JSP 200.30.7 "Excavation and Backfill for Unsuitable Material", and Exhibit A*

## NOTICE TO CONTRACTORS

Sealed bids for the Allen Road Bridge No. 329 will be received at the **Office of the Director of Procurement for the County of St. Louis, County Government Center Administration Building, 41 South Central Avenue, 8<sup>th</sup> Floor, Clayton, Missouri 63105**, until 11:00 a.m. on **September 11, 2019**, and at that time will be publicly opened and read.

St. Louis County Project No. CR-1274, Federal Project No. STP-4900(634) consists of clearing, grading, excavation, removal of improvements, bituminous pavement, paved approach, new bridge, and other incidental items within St. Louis County.

The successful Bidder or Bidders shall be required to comply with the most current applicable Federal (Davis-Bacon Act) and State statutory provisions concerning the payment of prevailing wages on public works, Section 290.210 through 290.340 R.S. Mo. 1959, as amended. All contractors must be on the Missouri Department of Transportation's approved contractor listing, seven (7) days prior to bid opening.

Contractors and sub-contractors who sign a contract to work on a public works project shall provide a ten (10) hour OSHA construction safety program, or similar program approved by the Department of Labor and Industrial Relations, to be completed by their on-site employees within sixty (60) days of beginning work on the construction project.

St. Louis County hereby notifies all bidders that it will affirmatively ensure that in any contract entered into pursuant to this advertisement, businesses owned and controlled by socially and economically disadvantaged individuals will be afforded full opportunity to submit bids in response to this invitation and will not be discriminated against on the grounds of race, color, religion, creed, sex, age, ancestry, or national origin in consideration for an award.

Plans and specifications will be available on **August 5, 2019** from the St. Louis County Web Site ([www.stlouisco.com](http://www.stlouisco.com)), or by contacting County Blue Reprographics, Inc., 1449 Strassner Drive, St. Louis, Missouri 63144, (314) 961-3800. There will be no refunds on any documents purchased.

Select the following link to view/purchase plans and specifications for this project:

[http://countyblue.boxlake.com/viewJobs.asp?action=list&group\\_id=9999](http://countyblue.boxlake.com/viewJobs.asp?action=list&group_id=9999)

Bids must be accompanied by a certified check or bidder's bond in an amount equal to 5% of the total bid. All checks shall be made payable to "Treasurer, St. Louis County."

The right is reserved by the St. Louis County to reject any or all bids.

The DBE Goal for this project is 14%.

No 2<sup>nd</sup> tier subcontracting will be allowed on this project.

### **200.30.7 EXCAVATION AND BACKFILL FOR UNSUITABLE MATERIAL**

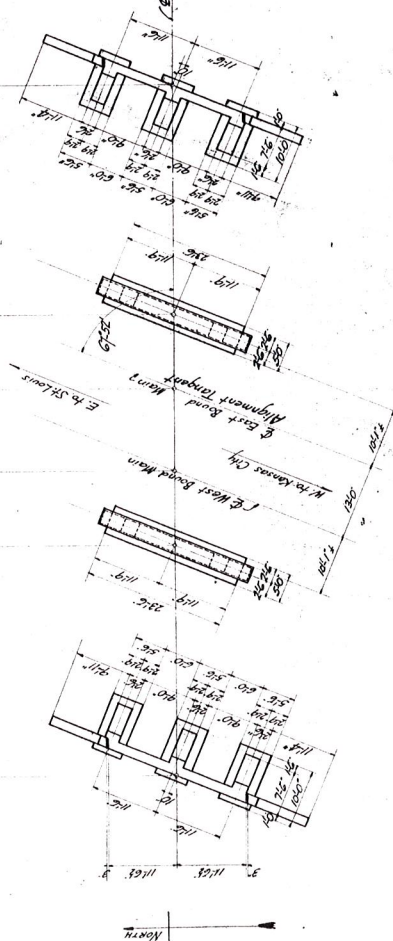
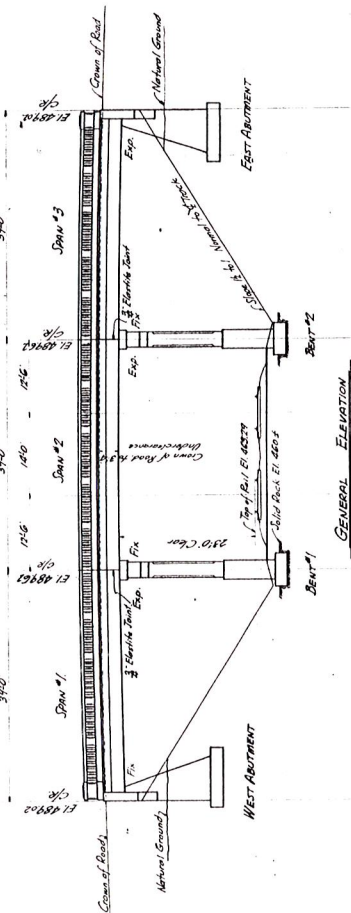
**1.0 Description.** The Engineer may order additional excavation beyond the pay limits established for excavation in order to remove material found unsuitable for construction. Unsuitable material shall include soil above the slip surface of the slope failure, any soil that appears to have been placed without proper compaction, and any other unsuitable material as determined by the Engineer. Backfill material shall be of an approved 2-inch maximum size granular-type material (with a plasticity index not exceeding 10 and a gradation such that at least 50 percent of the material will be retained on the No. 4 sieve) and placed in lifts not to exceed 6 inches. The Engineer will determine the gradation of the material. The backfill within 12 inches of the final grade shall be clay or clay-rich soil compacted in 6 inch layers to the approximate density of the adjacent soil.

**2.0 Method of Measurement.** The Engineer will make measurement for the volume of unsuitable material excavated beyond or outside the limits shown on the plans or established by the specifications for excavation. No direct payment will be made for spreading, shaping, and compacting this backfill material.

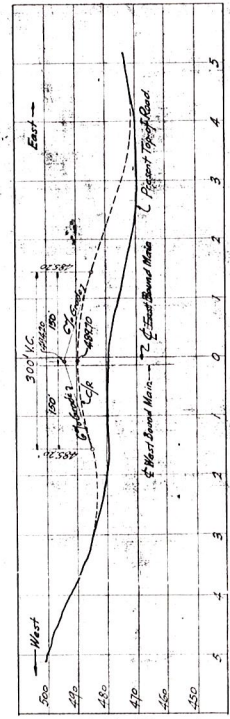
**3.0 Basis of Payment.** Payment for authorized excavation of unsuitable material, furnishing and placement of the backfill material and disposal of the unsuitable material will be made at a contingent unit price of \$100.00 per cubic yard of additional excavation.



# EXHIBIT A



## FOUNDATION PLAN



PROFILE OF ALLEN ROAD

Bill of Bores			DECK GIRDER SPANS			HORIZONTAL		
No.	Span Length	Location	No.	Span Length	Location	No.	Span Length	Location
1	120	120	1	120	120	1	120	120
2	120	120	2	120	120	2	120	120
3	120	120	3	120	120	3	120	120
4	120	120	4	120	120	4	120	120
5	120	120	5	120	120	5	120	120
6	120	120	6	120	120	6	120	120
7	120	120	7	120	120	7	120	120
8	120	120	8	120	120	8	120	120
9	120	120	9	120	120	9	120	120
10	120	120	10	120	120	10	120	120
11	120	120	11	120	120	11	120	120
12	120	120	12	120	120	12	120	120
13	120	120	13	120	120	13	120	120
14	120	120	14	120	120	14	120	120
15	120	120	15	120	120	15	120	120
16	120	120	16	120	120	16	120	120
17	120	120	17	120	120	17	120	120
18	120	120	18	120	120	18	120	120
19	120	120	19	120	120	19	120	120
20	120	120	20	120	120	20	120	120
21	120	120	21	120	120	21	120	120
22	120	120	22	120	120	22	120	120
23	120	120	23	120	120	23	120	120
24	120	120	24	120	120	24	120	120
25	120	120	25	120	120	25	120	120
26	120	120	26	120	120	26	120	120
27	120	120	27	120	120	27	120	120
28	120	120	28	120	120	28	120	120
29	120	120	29	120	120	29	120	120
30	120	120	30	120	120	30	120	120
31	120	120	31	120	120	31	120	120
32	120	120	32	120	120	32	120	120
33	120	120	33	120	120	33	120	120
34	120	120	34	120	120	34	120	120
35	120	120	35	120	120	35	120	120
36	120	120	36	120	120	36	120	120
37	120	120	37	120	120	37	120	120
38	120	120	38	120	120	38	120	120
39	120	120	39	120	120	39	120	120
40	120	120	40	120	120	40	120	120
41	120	120	41	120	120	41	120	120
42	120	120	42	120	120	42	120	120
43	120	120	43	120	120	43	120	120
44	120	120	44	120	120	44	120	120
45	120	120	45	120	120	45	120	120
46	120	120	46	120	120	46	120	120
47	120	120	47	120	120	47	120	120
48	120	120	48	120	120	48	120	120
49	120	120	49	120	120	49	120	120
50	120	120	50	120	120	50	120	120
51	120	120	51	120	120	51	120	120
52	120	120	52	120	120	52	120	120
53	120	120	53	120	120	53	120	120
54	120	120	54	120	120	54	120	120
55	120	120	55	120	120	55	120	120
56	120	120	56	120	120	56	120	120
57	120	120	57	120	120	57	120	120
58	120	120	58	120	120	58	120	120
59	120	120	59	120	120	59	120	120
60	120	120	60	120	120	60	120	120
61	120	120	61	120	120	61	120	120
62	120	120	62	120	120	62	120	120
63	120	120	63	120	120	63	120	120
64	120	120	64	120	120	64	120	120
65	120	120	65	120	120	65	120	120
66	120	120	66	120	120	66	120	120
67	120	120	67	120	120	67	120	120
68	120	120	68	120	120	68	120	120
69	120	120	69	120	120	69	120	120
70	120	120	70	120	120	70	120	120
71	120	120	71	120	120	71	120	120
72	120	120	72	120	120	72	120	120
73	120	120	73	120	120	73	120	120
74	120	120	74	120	120	74	120	120
75	120	120	75	120	120	75	120	120
76	120	120	76	120	120	76	120	120
77	120	120	77	120	120	77	120	120
78	120	120	78	120	120	78	120	120
79	120	120	79	120	120	79	120	120
80	120	120	80	120	120	80	120	120
81	120	120	81	120	120	81	120	120
82	120	120	82	120	120	82	120	120
83	120	120	83	120	120	83	120	120
84	120	120	84	120	120	84	120	120
85	120	120	85	120	120	85	120	120
86	120	120	86	120	120	86	120	120
87	120	120	87	120	120	87	120	120
88	120	120	88	120	120	88	120	120
89	120	120	89	120	120	89	120	120
90	120	120	90	120	120	90	120	120
91	120	120	91	120	120	91	120	120
92	120	120	92	120	120	92	120	120
93	120	120	93	120	120	93	120	120
94	120	120	94	120	120	94	120	120
95	120	120	95	120	120	95	120	120
96	120	120	96	120	120	96	120	120
97	120	120	97	120	120	97	120	120
98	120	120	98	120	120	98	120	120
99	120	120	99	120	120	99	120	120
100	120	120	100	120	120	100	120	120

TABLE OF QUANTITIES		
Item	Concrete	Reinf. Steel
East and West Abutts.	9,470 cu yds.	9,770 lbs.
Bents #1 and #2	707 1/2 "	9,450 "
3 Deck Girders	104 1/2 "	3,500 "
Handrail	14 1/2 "	1,950 "
Total	38,270 cu yds.	55,600 lbs.

GENERAL NOTES:-

DESIGN:-  
 Time load:- 1750 lb. at 20 Ton Test - 80% of an over exp.

CONCRETE:-

All exposed edges of concrete 10 or less to be beveled 1 inch unless otherwise noted.  
Reinforcing corners to have 1" fillets.  
All exposed surfaces of concrete to be rubbed free from form marks to uniform appearance.  
All exposed surfaces of concrete to have a smooth troweled finish.

tops of bents and abutments to be level with 15 meters.

REINFORCEMENT:- Bars to be deformed have rolled from new billet steel. Structural grade of steel.

Bars to be blocked to proper location and wired securely at all intersections.

WATERPROOFING:-  
The soffits of Beams and Slab of Center Span (#2) and backs of Abutments to be Waterproofed as follows:-

1. Remove all laitence and dust from surfaces to be waterproofed, leaving them clean and dry.
2. Apply two coats of Hydrolit or other approved brand of emulsified asphalt, making the application

in accordance with the Manufacturer's directions.

END BEARINGS  
Use 2-Ply Tar Paper under each End diaphragm.

Constructed according to plans.  
Information furnished by F.E. Bates per P.O. Roberts 12-12-30.

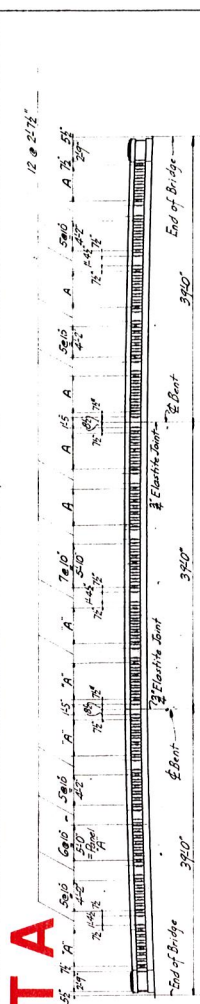
26.0  
MISSOURI PACIFIC R.R. CO.  
EASTERN DIVISION  
OVERHEAD HIGHWAY BRIDGE  
ALLEN ROAD  
1.84 Miles West of Jeddburg, Mo.  
Scale: - 1" = 100' except as noted.  
Office of Engineering, St. Louis, Mo.  
JUN 1934  
FILE NO. D-1313

✓MS

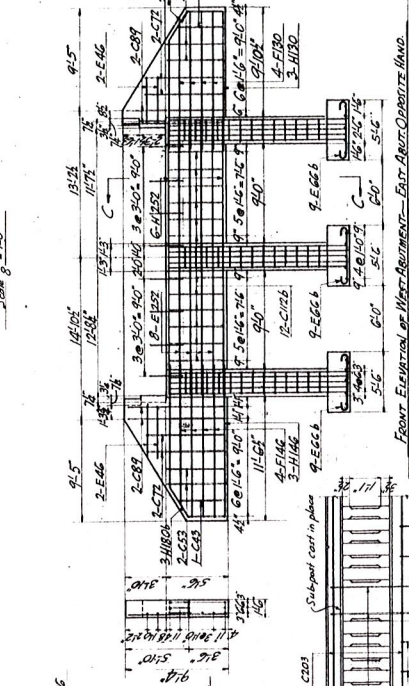
**Beck's**



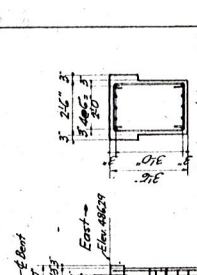
2020 2-72



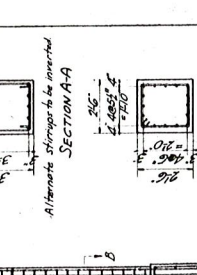
Scale  $\frac{1''}{8'} = 1:60'$


$$\frac{1}{2} \log 2$$

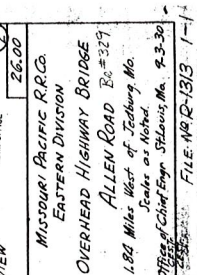

Scale  $\frac{1}{2}'' = 10'$



---



### HANDRAIL DETAILS



1. The first part of the document is a list of names and addresses, which appears to be a directory or a list of contacts. The names are written in a cursive script, and the addresses are listed below them. The list includes names such as "Mr. J. H. Smith", "Mr. W. B. Jones", and "Mr. C. D. Brown".

100

---

10