

# U.S. Route 60 Intersection Safety Project

## *East of Rogersville*

### Project Facts:

- ♦ Build J-turn intersections on U.S. Route 60 at Chicory Road/Industry Road, White Oak Road/Peck Hollow Road and Business Route 60/Center Street east of Rogersville

### Traffic Impacts:

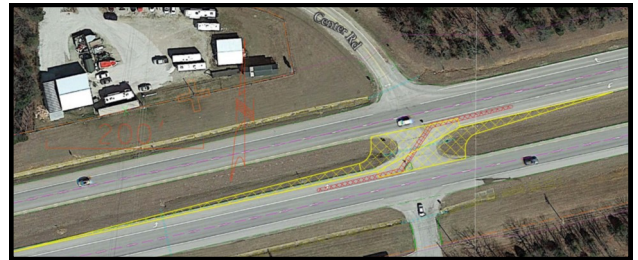
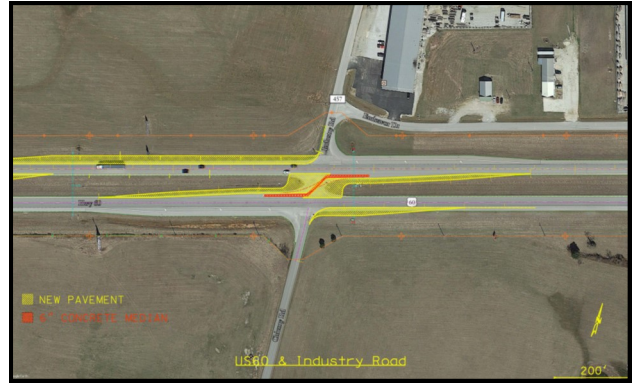
- ♦ Lane closings at times during construction
- ♦ Side roads may be closed at times to connect them to new intersections

**Estimated Total Cost:** \$2.2 million

**Construction:** 2020

### Additional information:

- ♦ Intersections are part of larger project to re-surface Route 60 between Webster County Route VV in Rogersville and a point east of the Webster/Wright county line
- ♦ Additional intersection improvements planned on Route 60 at Webster County Route A, at Webster County Route PP, at Webster County Route Z and at Skyline Drive in Seymour



### For more information:

- ♦ 417.895.7600/888.275.6636
- ♦ [www.modot.org/southwest](http://www.modot.org/southwest)
- ♦ [swcr@modot.mo.gov](mailto:swcr@modot.mo.gov)
- ♦ Facebook: MoDOT.Southwest
- ♦ Twitter: MoDOT\_Southwest
- ♦ Instagram: @MoDOT\_Southwest

