

Incoming Westbound I-70 - NO IMPACTS!

Gate 3

Gate 4

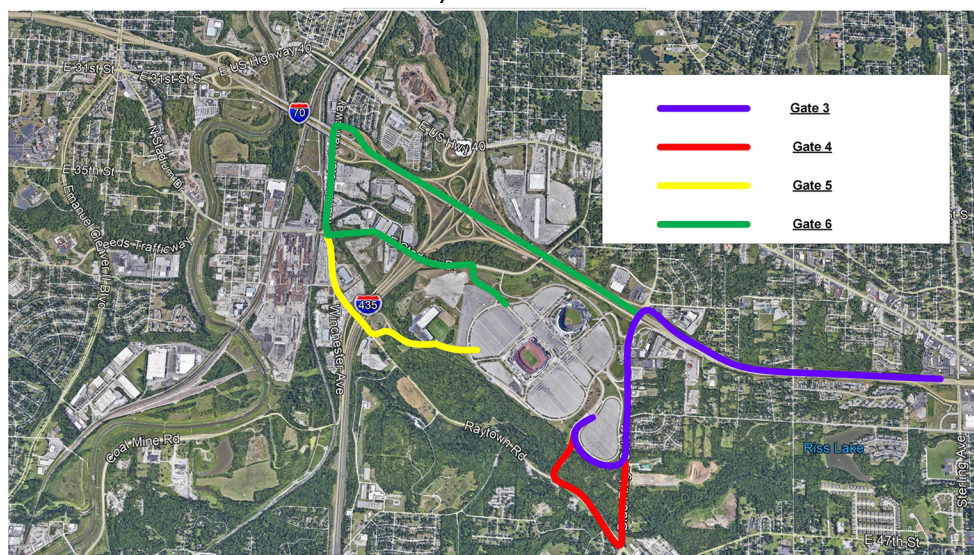
Gate 5

Gate 6

Use Blue Ridge Cutoff
Exit: 9

Use Manchester Rd.
Exit: 7B

From Downtown, Kansas City, KS, and Lawrence



Use Blue Ridge Cutoff
Exit: 9

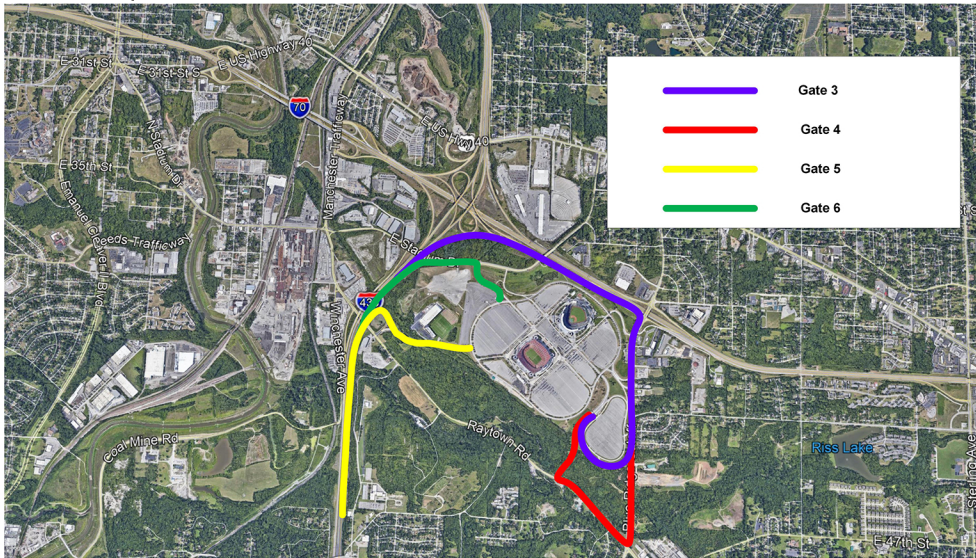
Use Manchester Rd.
Exit: 7B

Page 1/2

GAME DAY DETOURS

Incoming Northbound I-435 - **NO IMPACTS!**

From Raytown, Overland Park, Olathe



GATES 3 & 4:

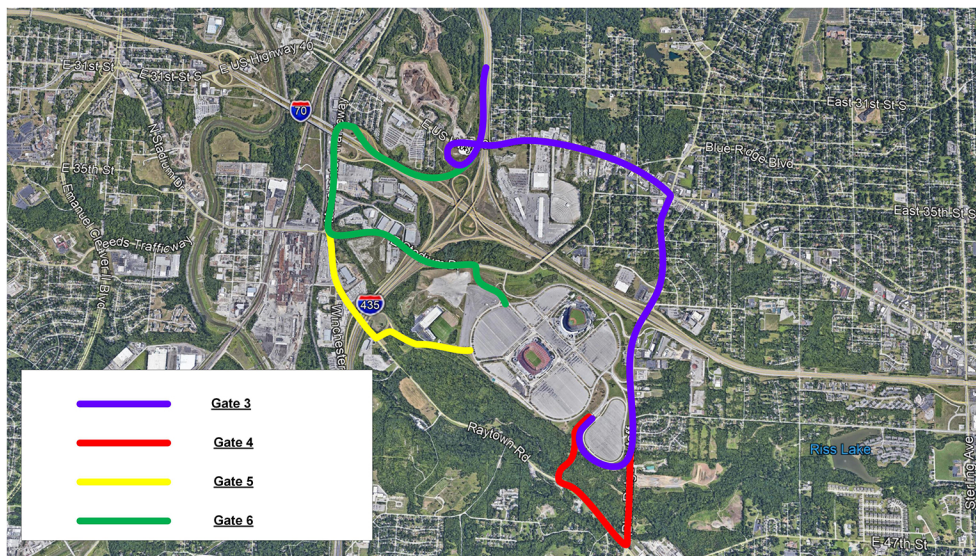
Take northbound I-435 to eastbound I-70. Use Blue Ridge Cutoff.
Exit: 9

GATES 5 & 6:

Use Stadium Drive / Raytown Road.
Exit: 63C

Incoming Southbound I-435 - **DETOURS IN PLACE**

From Liberty, North Kansas City



GATES 3 & 4:

DETOUR: Take U.S. 40 to Blue Ridge Cutoff.
Exit: 63A

GATES 5 & 6:

DETOUR: Take southbound I-435 to westbound I-70. Exit at Manchester Trafficway (7B) and then proceed to Raytown Rd. / Stadium Dr.

For additional information, visit www.modot.org/kansascity or call 1-888-ASK-MoDOT