



ROUTE 180 SIDEWALK & PAVEMENT PROJECT (J6S3048)

BOARD LOCATIONS

PRELIMINARY PLANS - SUBJECT TO CHANGE

ROUTE 180 / ST. CHARLES ROCK ROAD
CENTERLINE

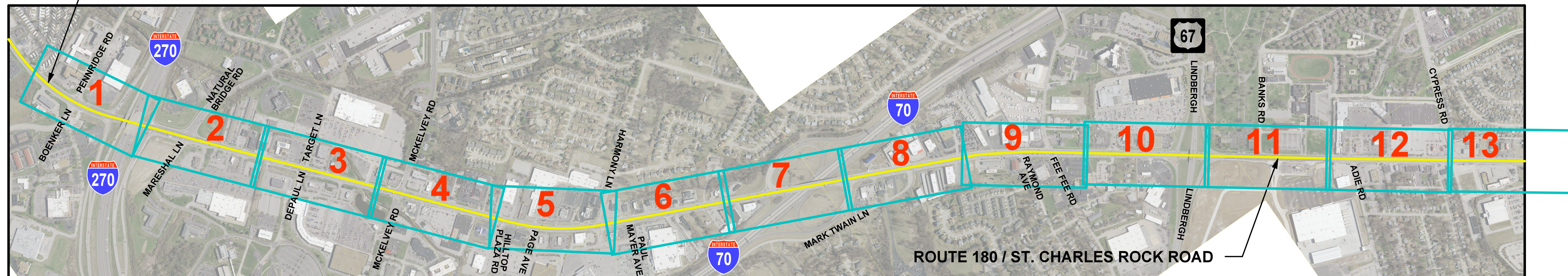
BOARD LOCATION

XX

PENNRIDGE ROAD TO I-170

ST. LOUIS COUNTY, MISSOURI

BEGIN ROUTE 180 PAVEMENT UPGRADES AND ADA IMPROVEMENTS
STA. 163+00

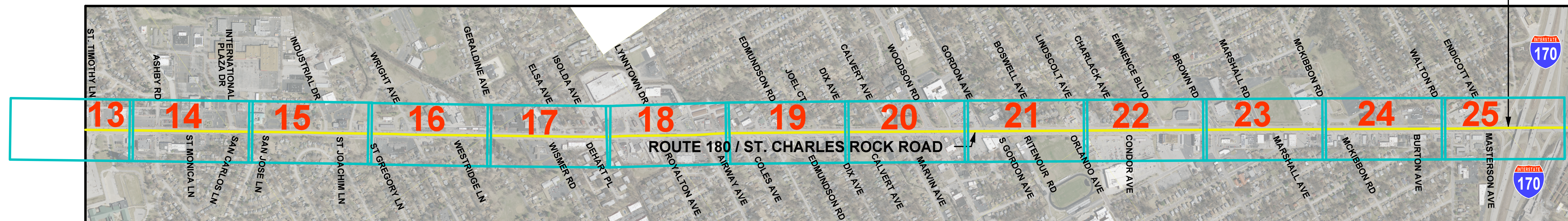


BOARDS 1 - 13

ROUTE 180 IMPROVEMENTS

NOT TO SCALE

END ROUTE 180 PAVEMENT UPGRADES
AND ADA IMPROVEMENTS
STA. 503+00



BOARDS 13 - 25

ROUTE 180 IMPROVEMENTS

NOT TO SCALE