

2019 Construction Guide

Barry County

- **Route 37:** Add right-turn lane at Route 60 in Monett
- **Route 60:** Rehabilitate westbound bridge over railroad in Monett
- **Route D:** Resurface pavement between Route 248 and Route 265/413 in Crane
- **Route Z:** Resurface pavement between Route 60 and Route 39 east of Monett
- **Route TT:** Resurface pavement and add shoulders between Route 39 and Stone County Route D west of Crane

Barton County

- **Route 43:** Repair shoulder at railroad bridge near Liberal
- **Route 160:** Replace bridge over railroad in Lamar
- **Route 160:** Repair shoulder in Mindenmines
- **Route A:** Resurface pavement between Route C and Route 160 east of Lamar
- **Route K:** Resurface pavement between Route P and Route 43 near Os-kaloosa
- **Route T:** Resurface pavement between Route 160 and Route 126 near Keno-ma

Bates County

- **Route 18:** Resurface pavement between Kansas state line and Route Y in Merwin
- **Route 52:** Improve sidewalks (ADA) in Amoret
- **Route B:** Replace bridge over Shaw Branch east of Route O near Rockville

Benton County

- **Route 7:** Add turn lanes, upgrade traffic signal and improve sidewalks (ADA) at Commercial Street in Warsaw
- **Route 7:** Seal pavement between Route PP and Warsaw
- **Route 83:** Resurface pavement and upgrade guardrail between Route 65 in Warsaw and Route 54 near Quincy
- **Route B:** Replace bridge over Indian Creek near Cole Camp
- **Route Z:** Seal pavement between Route 13 near Deepwater and Route 7 near Warsaw
- **Route MM:** Resurface pavement between Route 65 in Warsaw and the end of state maintenance



2019 Construction Guide

Cedar County

- **Route 32:** Replace bridge over Cedar Creek and straighten road west of Stockton

Christian County

- **Business 65:** Widen South Street to five lanes between 6th Street and 19th Street, add sidewalks and improve intersection at 3rd Street/Selmore Road in Ozark
- **Route 14:** Widen Mount Vernon Street to five lanes and improve sidewalks between Estes Street and Westminster Street in Nixa
- **Route 65:** Widen to six lanes between Evans Road and Route CC/J interchange in Ozark
- **Route 65:** Resurface original highway lanes between Route 60 in Springfield and Routes CC/J in Ozark
- **Route 160/13:** Add turn lanes, add sidewalk and replace traffic signals at Tracker Road and at Northview Road in Nixa
- **Route 160/13:** Resurface pavement between South Street in Nixa and Route 13 at Reeds Spring Junction
- **Route 160/13:** Resurface pavement and upgrade guardrail between Plainview Road in Springfield and Route 14 in Nixa
- **Route 160/13:** Improve turn lanes at Aldersgate Drive, at Wasson Drive and at Bentwater Drive in Nixa
- **Route 160/13:** Add turn lane at Rosedale Road near Nixa
- **Route 176:** Seal pavement between Route 160/13 near Spokane and Route 65 near Branson
- **Route 176:** Seal pavement between Route 160/13 near Spokane and Route 248 in Galena

Dade County

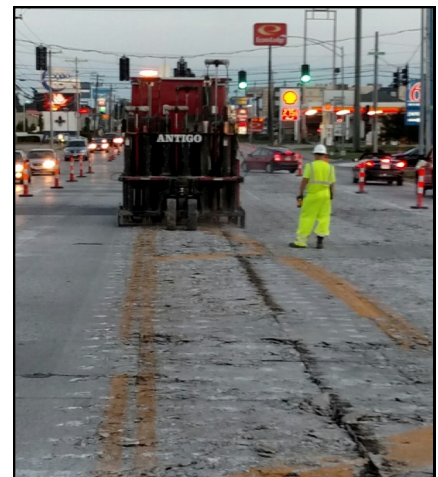
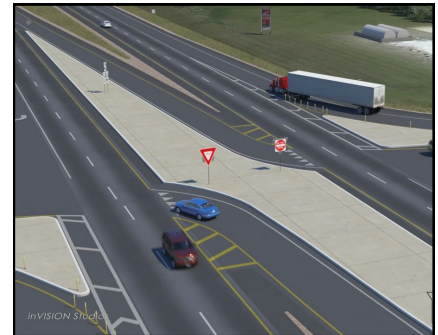
- **Route 160:** Seal pavement between Route 39 in Greenfield and Route 123 near Willard

Dallas County

- **Route 38:** Seal pavement between Route 65 near Buffalo and Route J north of Marshfield

Greene County

- **Route 13:** Improve intersections at Route O, at Route WW and at Routes BB/CC north of Springfield



2019 Construction Guide

- **Route 65:** Rebuild original highway lanes between Sunshine Street and Route 60, rebuild southbound Route 65 to westbound Route 60 ramp and upgrade guardrail in Springfield
- **Route 65:** Widen to six lanes between Evans Road in Springfield and Route CC/J interchange in Ozark
- **Route 65:** Resurface original highway lanes between Route 60 in Springfield and Routes CC/J in Ozark
- **Route 65:** Rehabilitate Evans Road bridge over Route 65 in Springfield
- **Route 160:** Widen to four lanes and improve intersections between Springfield and Willard. Complete in 2020.
- **Route 160/13:** Resurface pavement and upgrade guardrail between Plainview Road in Springfield and Route 14 in Nixa
- **Route 160/13:** Improve intersections on Campbell Avenue at Farm Road 157 and at Steinert Road in Springfield
- **Route 160:** Improve sidewalks (ADA) in Ash Grove
- **Route 160:** Seal pavement between Route 39 in Greenfield and Route 123 near Willard
- **Route F:** Resurface pavement between Route 160 in Ash Grove and Route 266
- **Route F:** Improve sidewalks (ADA) in Ash Grove
- **Route M:** Build roundabout at Farm Road 103/Repmo Drive near Republic
- **Route V:** Improve sidewalks (ADA) in Ash Grove
- **Route Z:** Resurface pavement between Route 160 in Willard and end of state maintenance
- **Route Z:** Improve sidewalks (ADA) in Willard
- **Route TT:** Replace bridge over Pickerel Creek near Republic
- **Route YY:** Resurface pavement and add shoulders between Route 65 in Springfield and Route 125
- **Loop 44:** Rehabilitate Chestnut Expressway bridge over Jordan Creek/railroad in Springfield
- **Route 65 Outer Road:** Resurface pavement and improve sidewalks on Eastgate Avenue between Division Street and Sunshine Street in Springfield
- **Ingram Mill Road:** Resurface pavement and improve sidewalks (ADA) between Catalpa Street and Sunshine Street in Springfield
- **Division Street:** Improve sidewalks (ADA) in Springfield



Henry County

- **Route 7:** Seal pavement between Route PP and Warsaw
- **Route 13:** Improve intersection at Business 13/Calvird Drive in Clinton
- **Route D:** Seal pavement between Route 64 in Nemo and Route 54 in Preston

2019 Construction Guide

- **Gaines Drive:** Widen roadway, extend roadway to Route 52 and relocate Route 13/Gaines Drive intersection in Clinton

Hickory County

- **Route 83:** Resurface pavement between Route 65 in Warsaw and Route 54 near Quincy
- **Route D:** Seal pavement between Route 13 near Deepwater and Route 7 near Warsaw

Jasper County

- **I-44:** Bridge improvements at various bridges
- **I-44:** Resurface pavement between Range Line Road in Joplin and Route 37 near Sarcoxie
- **Route 37:** Replace bridge over Center Creek near Reeds
- **Route 249:** Resurface pavement between Route 171 in Cartersville and 20th Street in Joplin
- **Route D:** Replace bridge over Center Creek near Alba
- **Route FF:** Resurface pavement between Main Street and I-49 in Joplin
- **Route FF:** Add turn lanes, improve sidewalks and upgrade traffic signals on 32nd Street at Indiana Avenue and at Connecticut Avenue in Joplin
- **Loop 49:** Resurface pavement and sidewalk (ADA) improvements on Range Line Road/Madison Avenue between 10th Street in Webb City and 46th Street in Leawood

Lawrence County

- **I-44:** Bridge improvements at various bridges
- **Loop 44:** Resurface pavement on Mount Vernon Boulevard between Route H and I-44 in Mount Vernon

McDonald County

- **Route B:** Repair shoulders east of Hart
- **Route H:** Repair shoulders near Noel
- **Route U:** Rehabilitate bridge over Star Hollow Creek near Powell
- **Route KK:** Replace bridge over Pine Creek near Jane

Newton County

- **I-44:** Resurface pavement between Range Line Road in Joplin and Route 37 near Sarcoxie
- **I-44:** Rehabilitate bridge over Shoal Creek in Joplin



2019 Construction Guide

- **Route 43:** Add turn lanes and sidewalk on Hearnese Boulevard at 32nd Street in Joplin
- **Route 59:** Resurface pavement between Route 60 and I-44 near Diamond
- **Loop 49:** Resurface pavement on Range Line Road between I-49 and 46th Street in Leawood

Polk County

- **Route 13:** Improve intersections at 565th Road, at Route 215 East/545th Road, at Route 215 West, and at Route 123 in the Bolivar/Humansville areas
- **Route PP:** Rehabilitate bridge over Pomme de Terre River near Flemington

St. Clair County

- **Route A:** Resurface pavement and upgrade guardrail between Route 52 and Route 13 near Lowry City

Stone County

- **Route 13:** Resurface pavement between Reeds Spring Junction and Kimberling City bridge
- **Route 13:** Add turn lane at Route 160 at Reeds Spring Junction and add acceleration lane at Business 13 north junction in Branson West
- **Route 13:** Repair drainage between Stoneridge Center Road and James River Road near Kimberling City
- **Route 160/13:** Resurface pavement between Finley River south of Nixa and Reeds Spring Junction
- **Route 173:** Seal pavement between Route 413/265 near Elsey and Route 76 in Cape Fair
- **Route 176:** Seal pavement between Route 160/13 near Spokane and Route 248 in Galena
- **Route 248:** Replace bridge over Railey Creek near Cape Fair
- **Route 248:** Seal pavement between Route 413/265 in Galena and Barry County Route D in Wheelerville
- **Route D:** Resurface pavement between Route 248 and Route 265/413 in Crane
- **Route TT:** Resurface pavement and add shoulders between Route 39 and Stone County Route D west of Crane

Taney County

- **Route 176:** Resurface pavement between Merriam Woods and Route 160 near Forsyth
- **Route 176:** Seal pavement between Route 160/13 in Spokane and Route 65 near Branson



2019 Construction Guide

- **Route EE:** Resurface pavement in Rockaway Beach

Vernon County

- **Route 54:** Resurface pavement and improve sidewalks (ADA) on Austin Boulevard between Webster Street and I-49 in Nevada
- **Route 54:** Resurface pavement and improve sidewalks (ADA) on Centennial Boulevard between Austin Boulevard and I-49 in Nevada
- **Loop 49:** Resurface pavement and improve sidewalks (ADA) on Osage Boulevard between I-49 and Austin Boulevard in Nevada

Webster County

- **I-44:** Build interchange at Marshall Road east of Marshfield. Complete in 2020.
- **Route 38:** Seal pavement between Route 65 near Buffalo and Route J north of Marshfield
- **Route CC:** Build roundabout at Hubble Drive/Banning Street intersection in Marshfield
- **Route CC:** Resurface pavement between Rifle Range Road and Route 38 in Marshfield

* All projects scheduled for completion by the end of 2019, unless otherwise noted.

