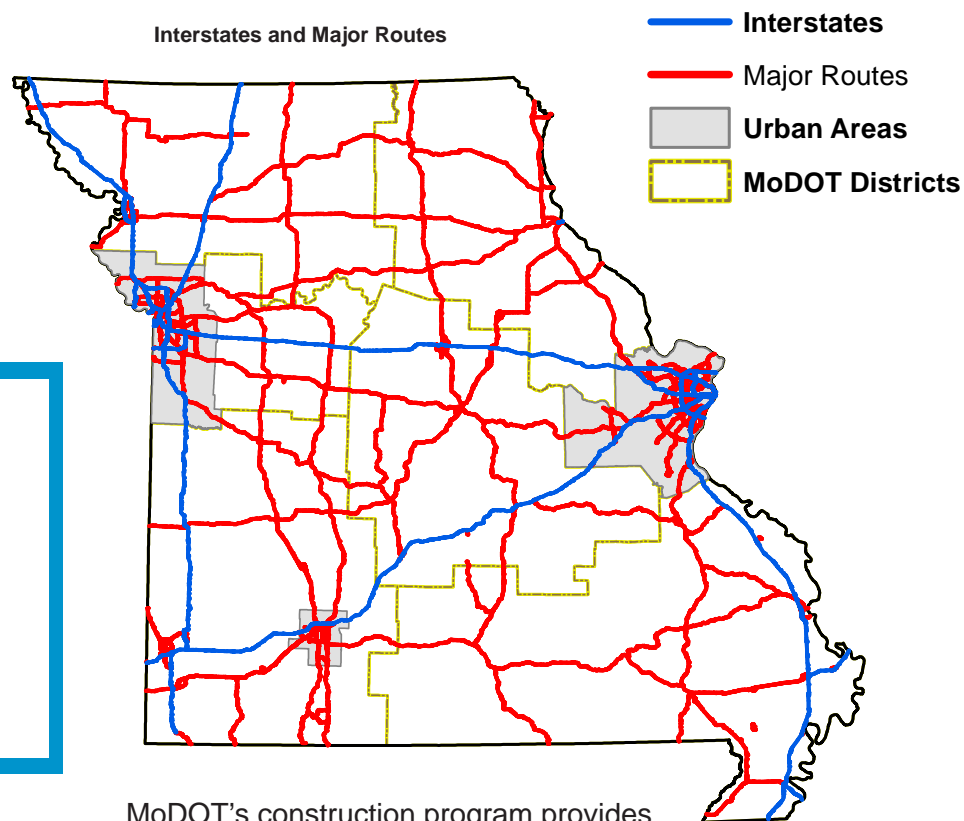


The Current Condition of MISSOURI TRANSPORTATION

What is the Current Condition of Missouri Transportation?

Last year, 51.8 billion miles were traveled on the state highway system. The majority of travel occurs on interstates and major routes. Interstates and major routes include just 5,546 miles of the 33,859 miles of highway in Missouri, but account for 76 percent of the travel. Currently, 92 percent of these routes are in good condition as MoDOT has focused on improving and maintaining these routes over the last decade.

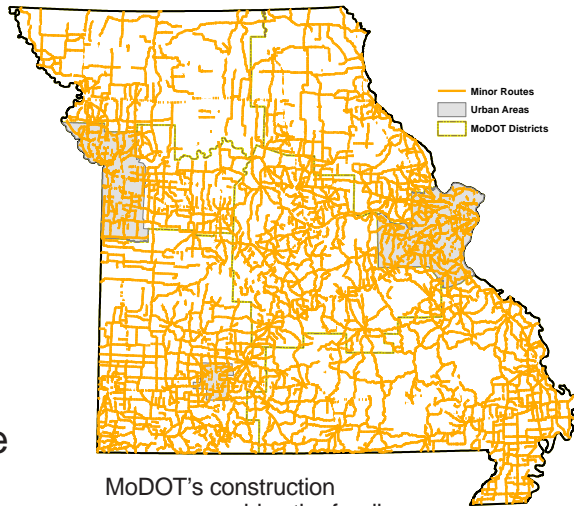


39.6 billion miles were driven on interstates and major routes; therefore, each mile had 7.1 million miles traveled on it.

MoDOT's construction program provides the funding to maintain these routes.

Missouri's minor routes make up the largest group of state highways, accounting for 17,166 miles – just over one-half of the entire state highway system. About 22 percent of all state travel occurs on these routes. Currently, 81 percent of these routes are in good condition.

Minor Routes

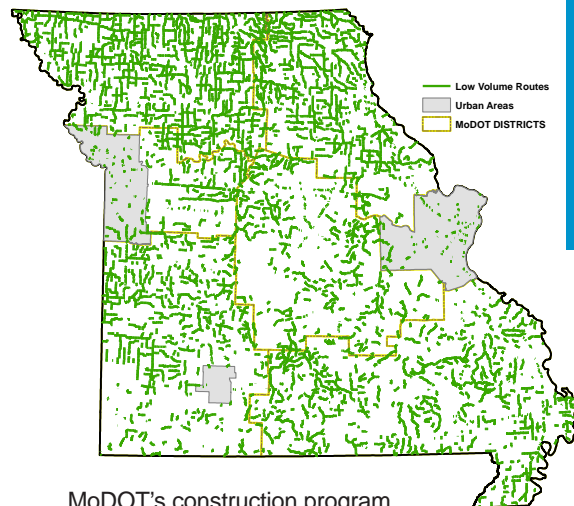


MoDOT's construction program provides the funding to maintain these routes.

11.4 billion miles were driven on minor routes; therefore, each mile had 664,000 miles traveled on it.

The final tier of Missouri highways is low volume routes. Each of these routes carry less than 400 vehicles per day and primarily serve local transportation needs. Missouri has 11,147 miles of low volume routes, accounting for about one-third of the state system. Travel on these routes is less than two percent of all state highway travel. Currently, 73 percent of these routes are in good condition.

Low Volume Routes

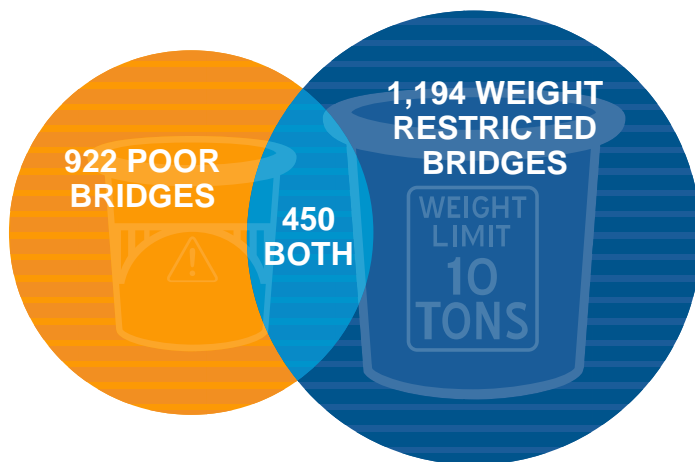


MoDOT's construction program funds are used to maintain the bridges on these routes; however, the pavements on these routes are maintained using MoDOT's maintenance funds.

0.8 billion miles were driven on low volume routes; therefore, each mile had 72,000 miles traveled on it.

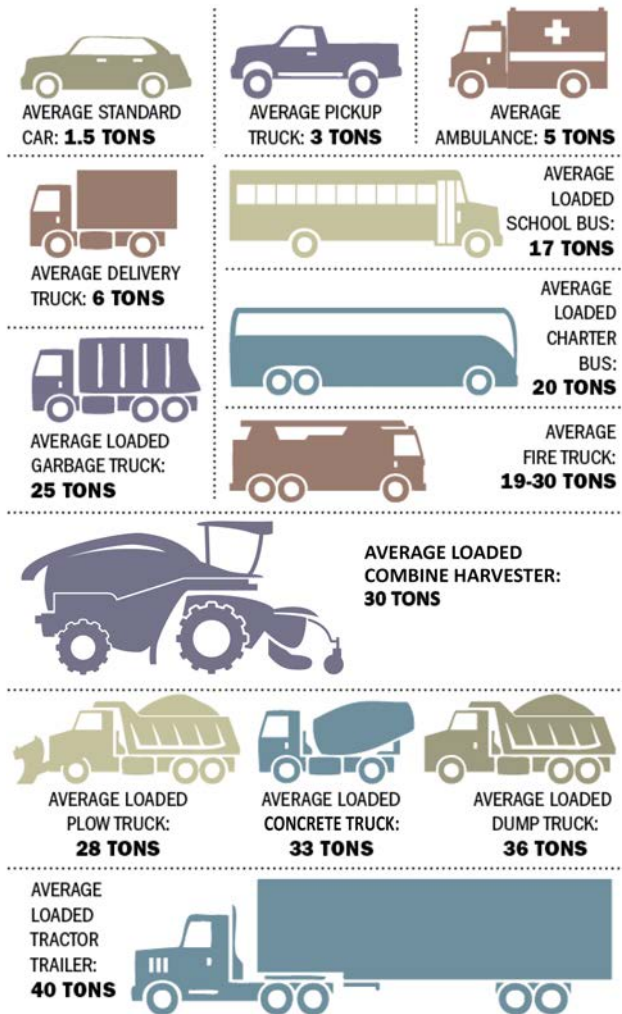
The Current Condition of MISSOURI TRANSPORTATION

In addition to the huge network of highways, Missouri has 10,385 bridges of varying sizes, including 208 major bridges that are longer than 1,000 feet, or about the length of three football fields. Currently, 922 bridges are in poor condition. MoDOT inspects these bridges on a regular basis to ensure they are safe for travelers. If a bridge is unsafe, it is closed until repairs can be made. Missouri also has 1,194 weight-restricted bridges, with 450 of them also in poor condition.



Approximate vehicle weights

Lower weight limits for about 1,300 load-posted state bridges:



Source: PennDOT

James Hilston/Post-Gazette