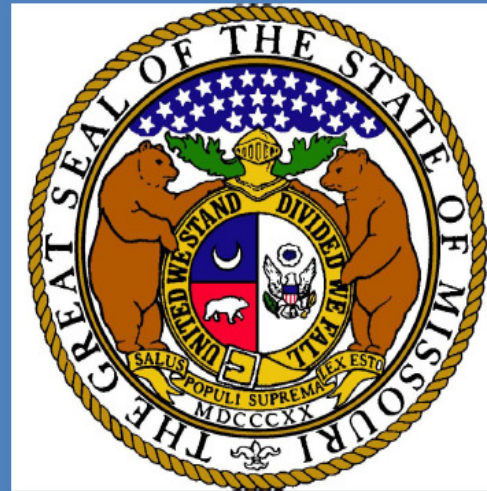


Transportation Project Planning



Welcome



Report of the
21st Century Missouri Transportation System Task Force
*Recommendations to support economic competitiveness, transportation
reliability, and highway safety*

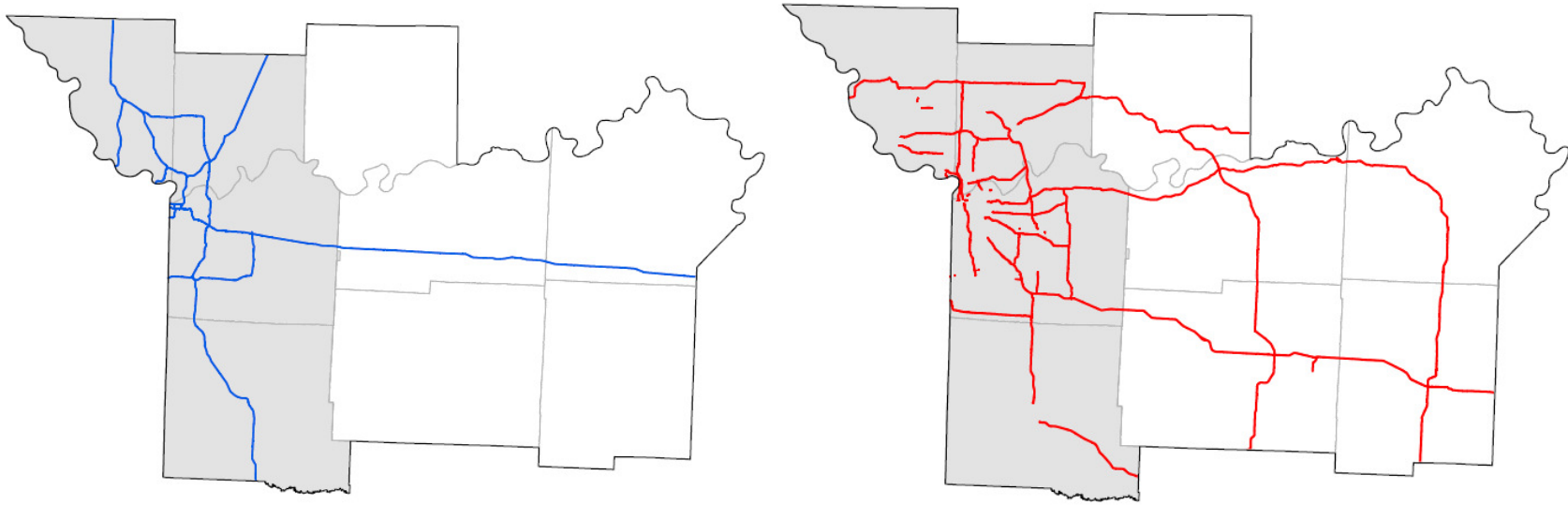
Opportunities for Potential Funding

- Proposition D
 - State Share - \$288 Million
 - Local Share - \$124 Million (\$62 Million City/\$62 Million County)
- Cost Share Opportunities
- Federal



Kansas City District Update

Interstates & Major Routes



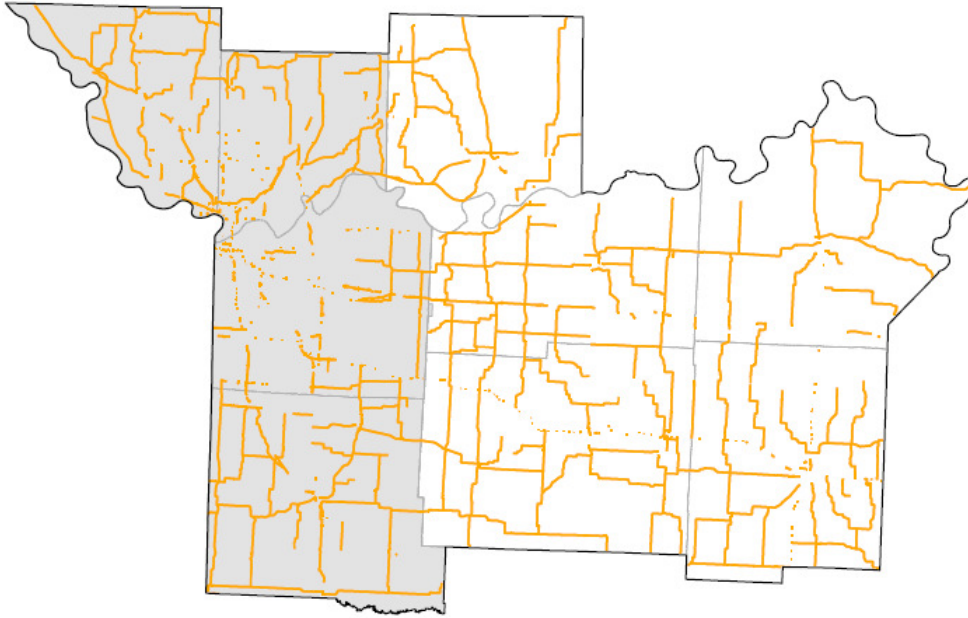
818 Centerline Miles

90% Good Pavement Condition

85% of District Travel

Kansas City District Update

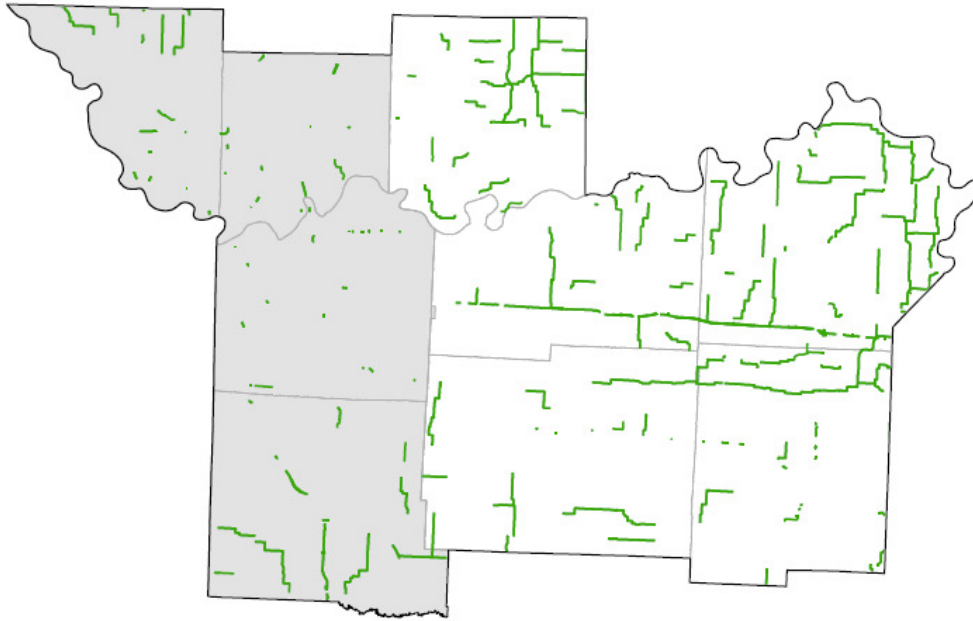
Minor Routes (Over 400 Vehicles/Day)



1,567 Centerline Miles
76% Good Pavement Condition
14% of District Travel

Kansas City District Update

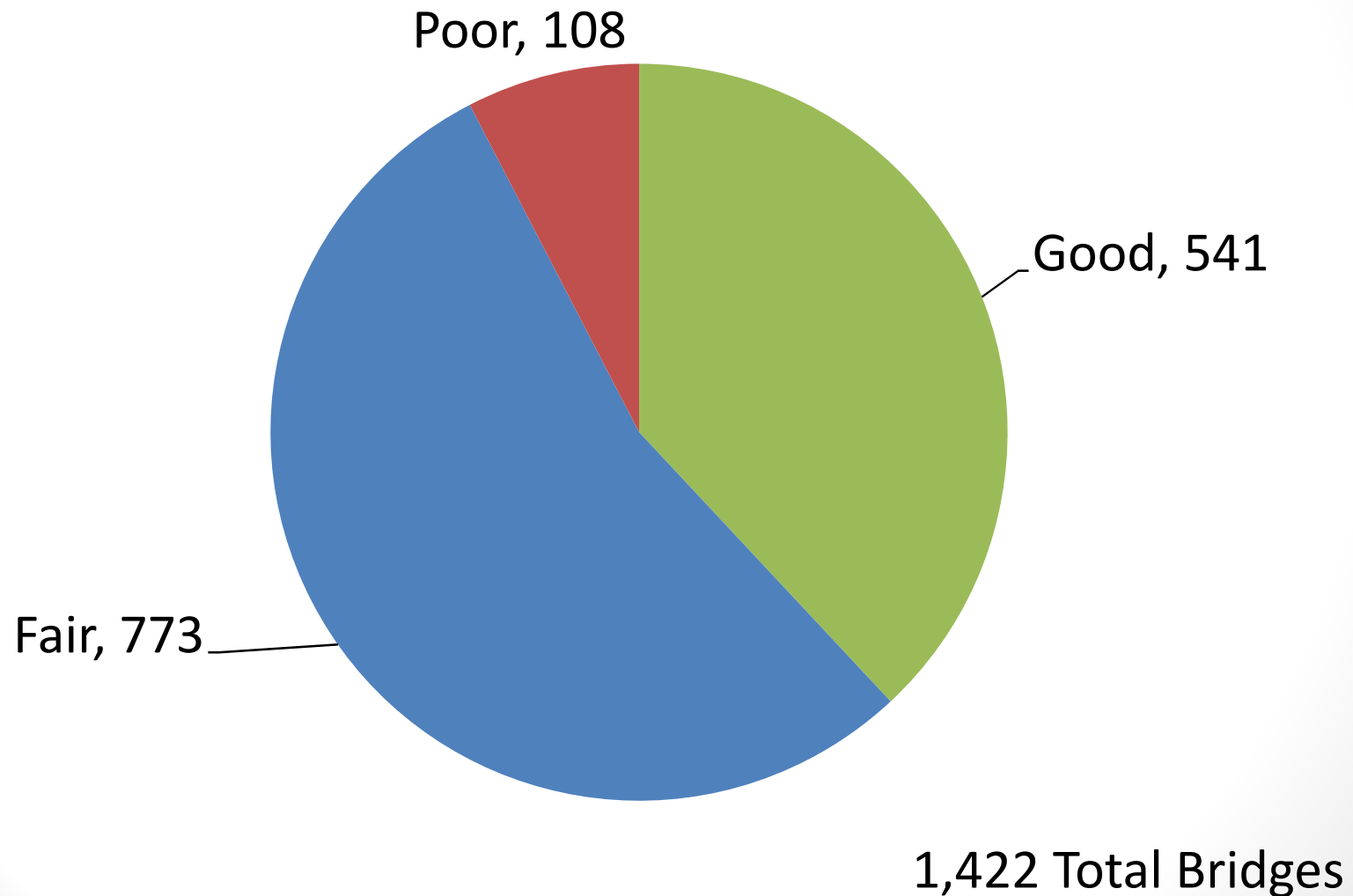
Low Volume Routes (Less Than 400 Vehicles/Day)



691 Centerline Miles
75% Good Pavement Condition
1% of District Travel

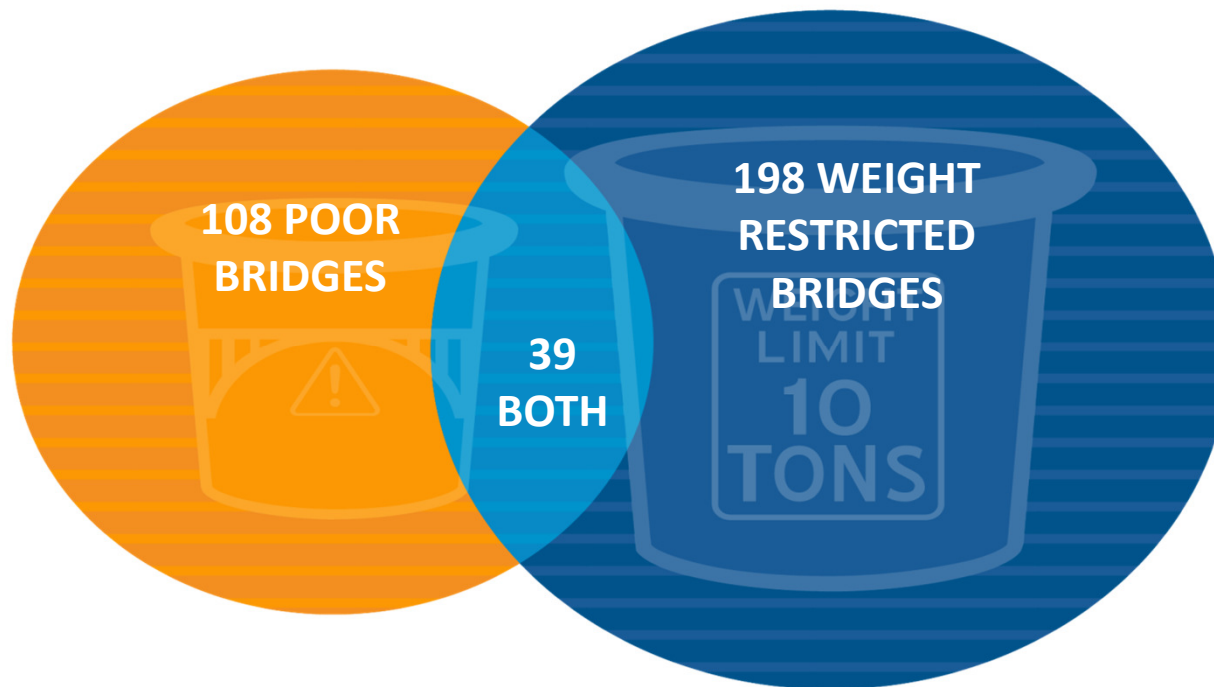
Kansas City District Update

State Bridge Conditions



Kansas City District Update

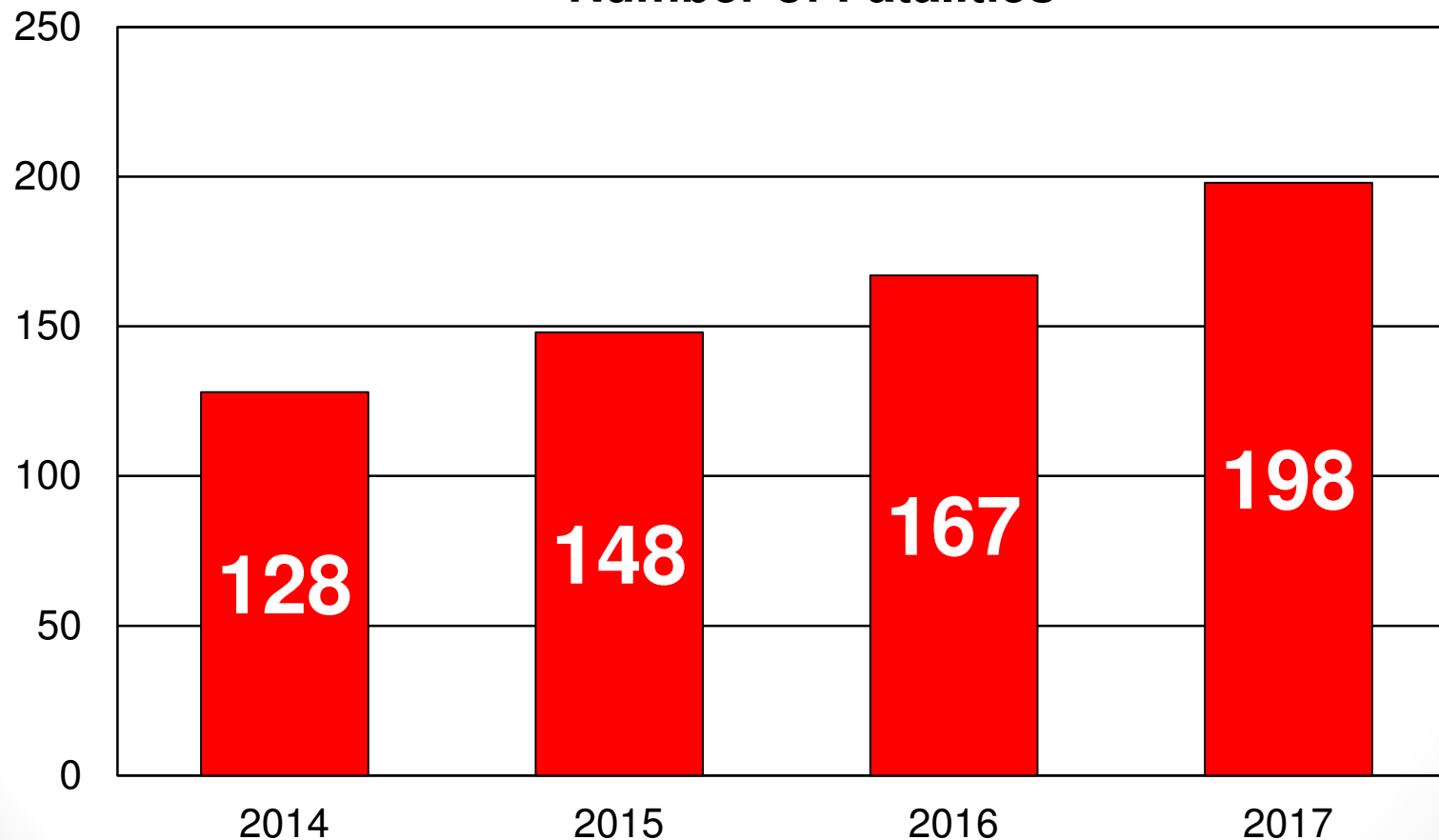
Poor and Weight Restricted Bridges



Kansas City District Update

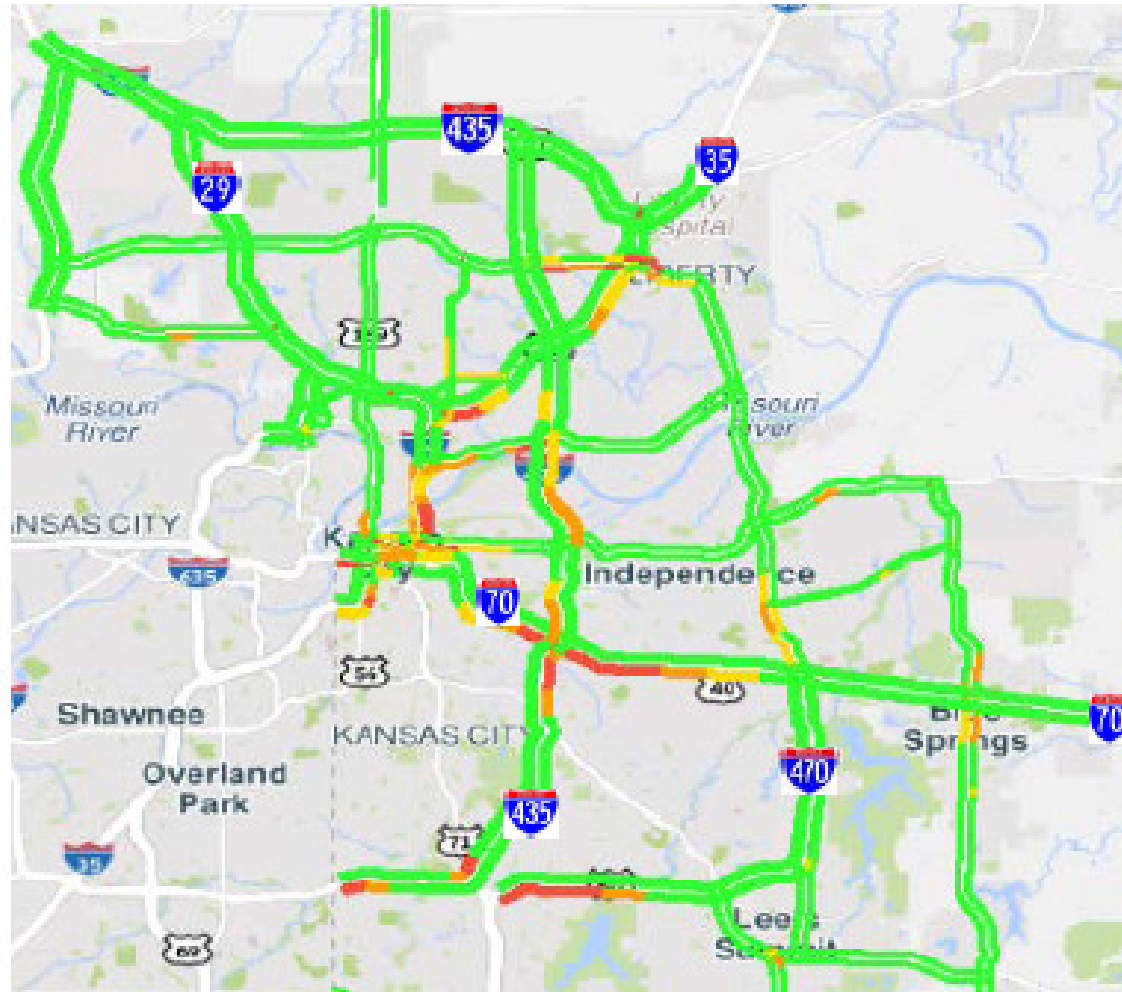
Safety

Number of Fatalities



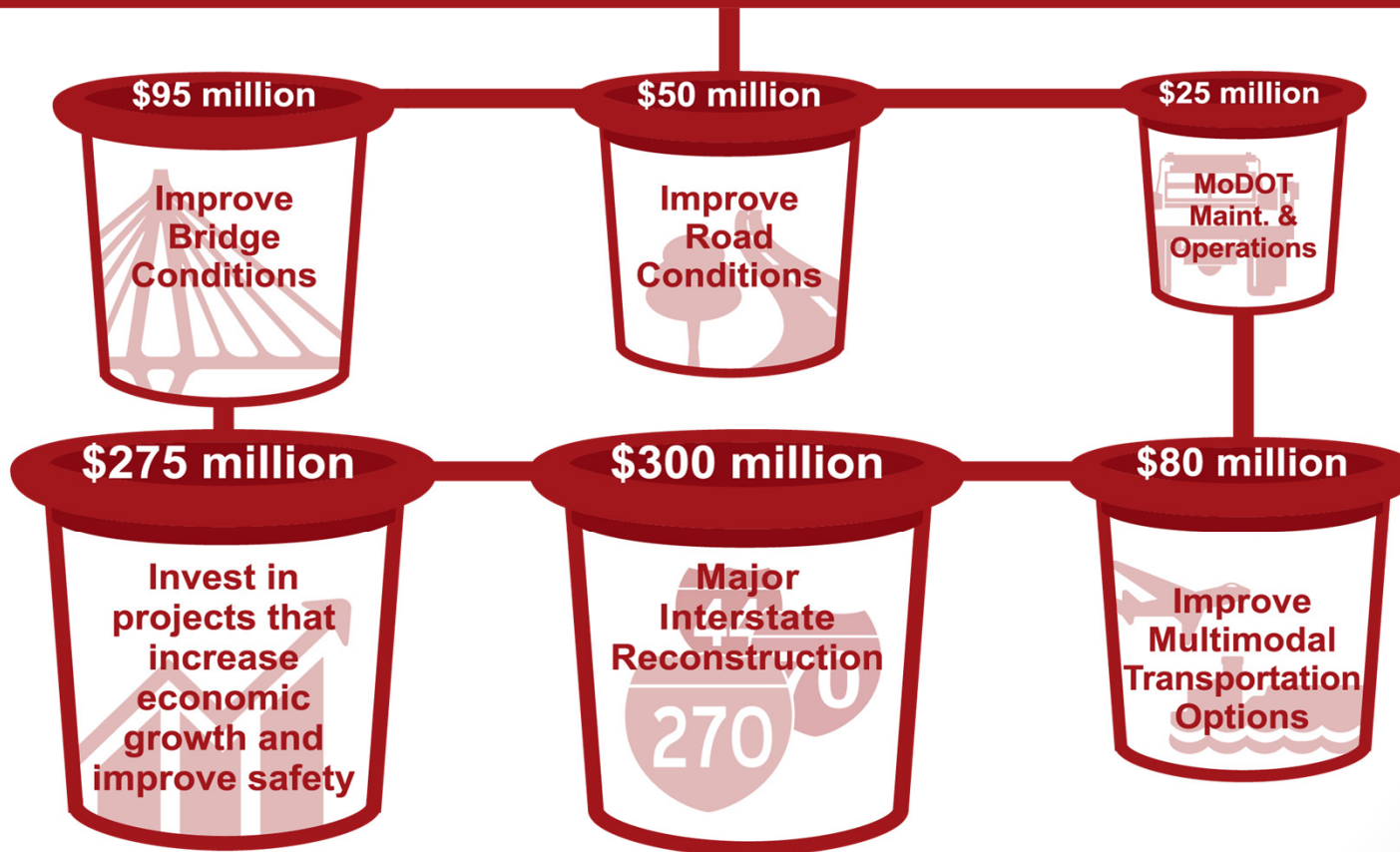
Kansas City District Update

PM Congestion



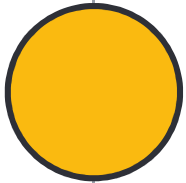
Unfunded Needs

HIGH-PRIORITY UNFUNDED ANNUAL TRANSPORTATION NEEDS
\$825 million



Local Priorities Discussion





Mid America Regional Council

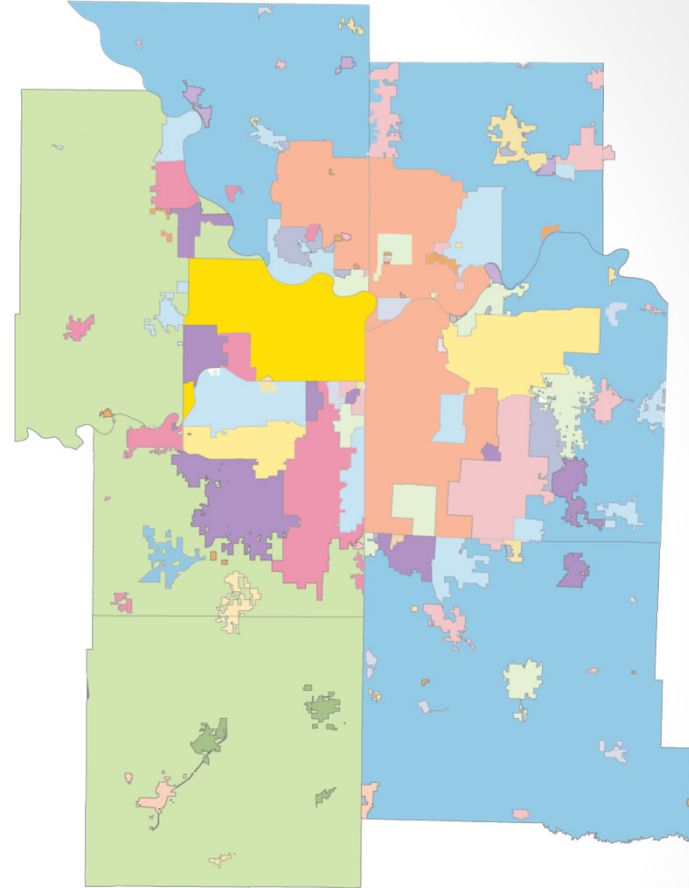
Kansas City Region Metropolitan Planning Organization

Missouri State System Priorities – October 30th, 2018

● Who is MARC?

Metropolitan Planning Organization:

- *Two States*
- *Eight Counties*
- *110 Cities*
- *2 million people*
- *1 million workers*



Regional Vision

“Greater Kansas City is a region of opportunity. Its robust economy, healthy environment and social capacity support the creativity, diversity and resilience of its people, places and communities.”



Approved by the MARC Board of Directors, May 2018

● Needs Assessment

- Centers and Corridors Focus
- Economic Vitality
- Access to Opportunity
- Transportation Choice
- Public Health and Safety
- Healthy Environment
- Data and Technology
- Financial Sustainability

Each stated need includes:

- ☐ **Need statement**
- ☐ **Current challenges for RTP to address**
- ☐ **Measures**
- ☐ **Leadership**

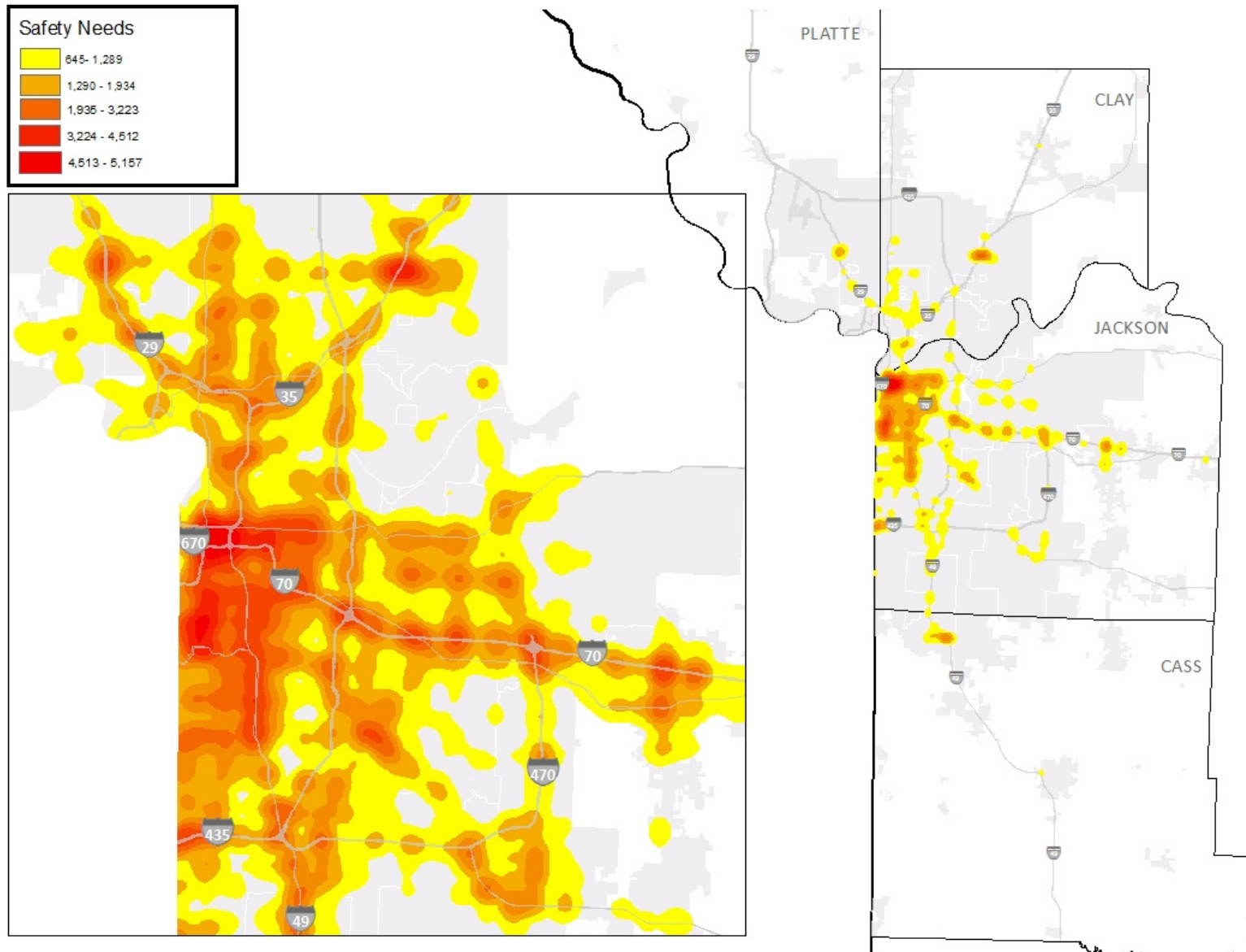
REGIONAL TRANSPORTATION PLAN
2050

Missouri State System Priorities

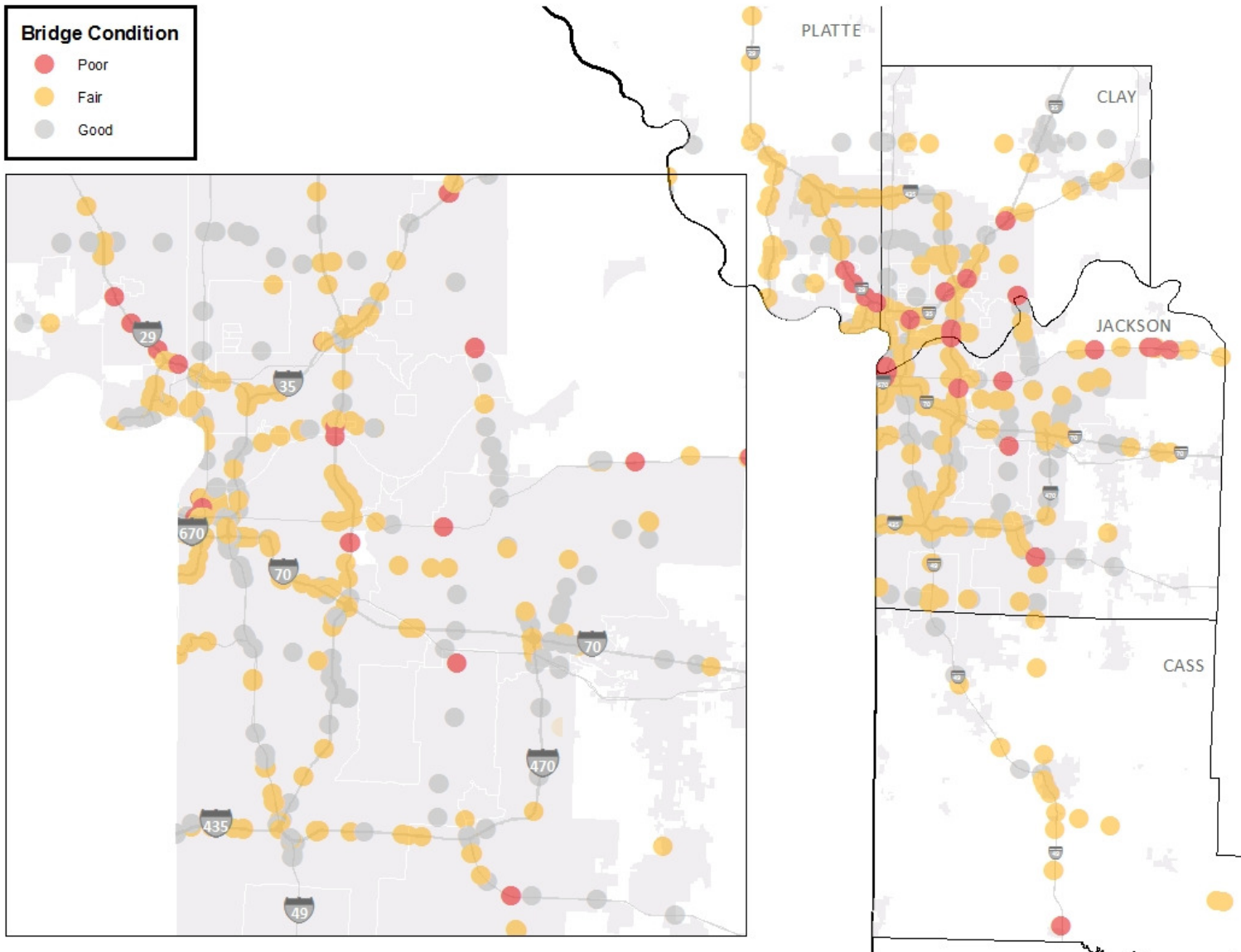
- Safety
- System Preservation
- System Reliability
- Transportation Choice
- Green Infrastructure



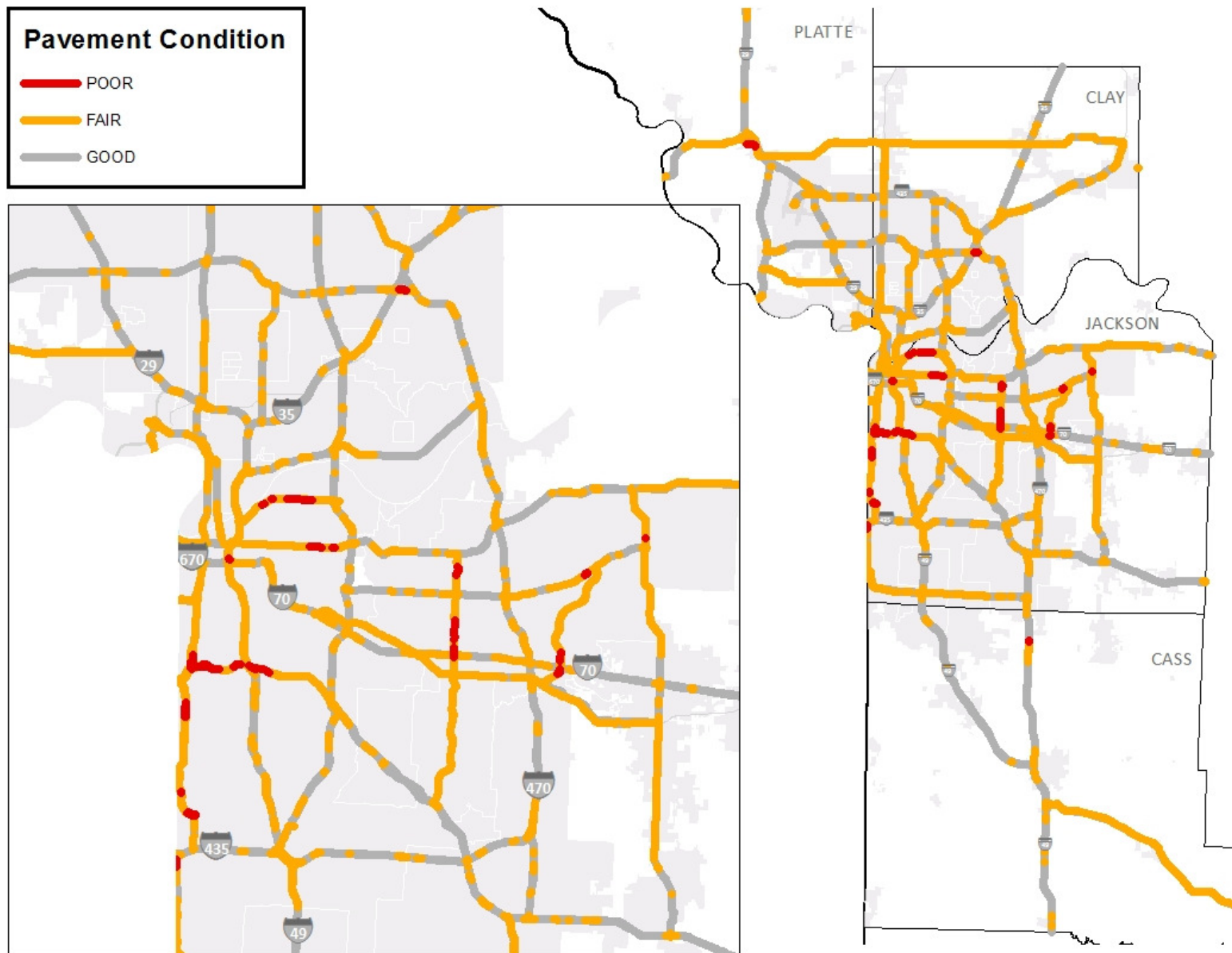
Safety Needs



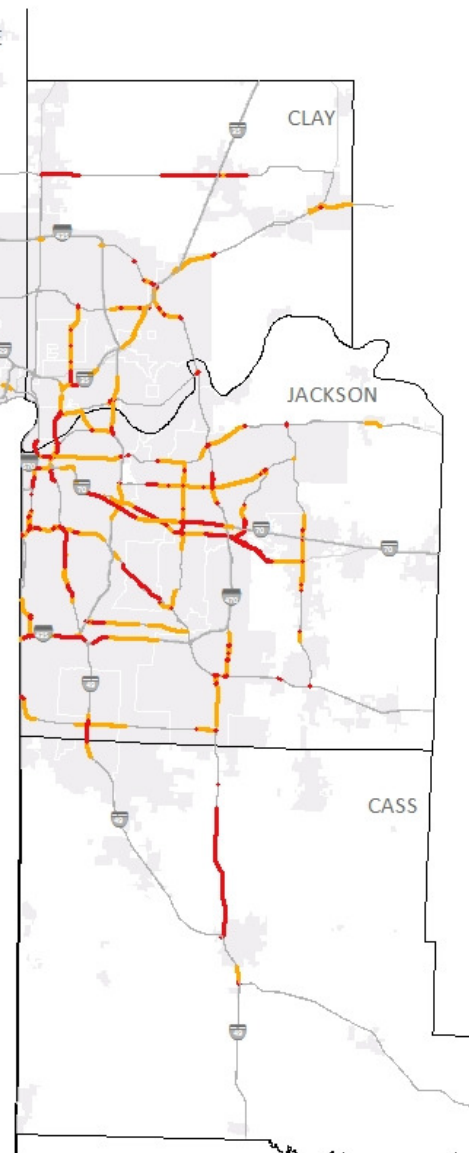
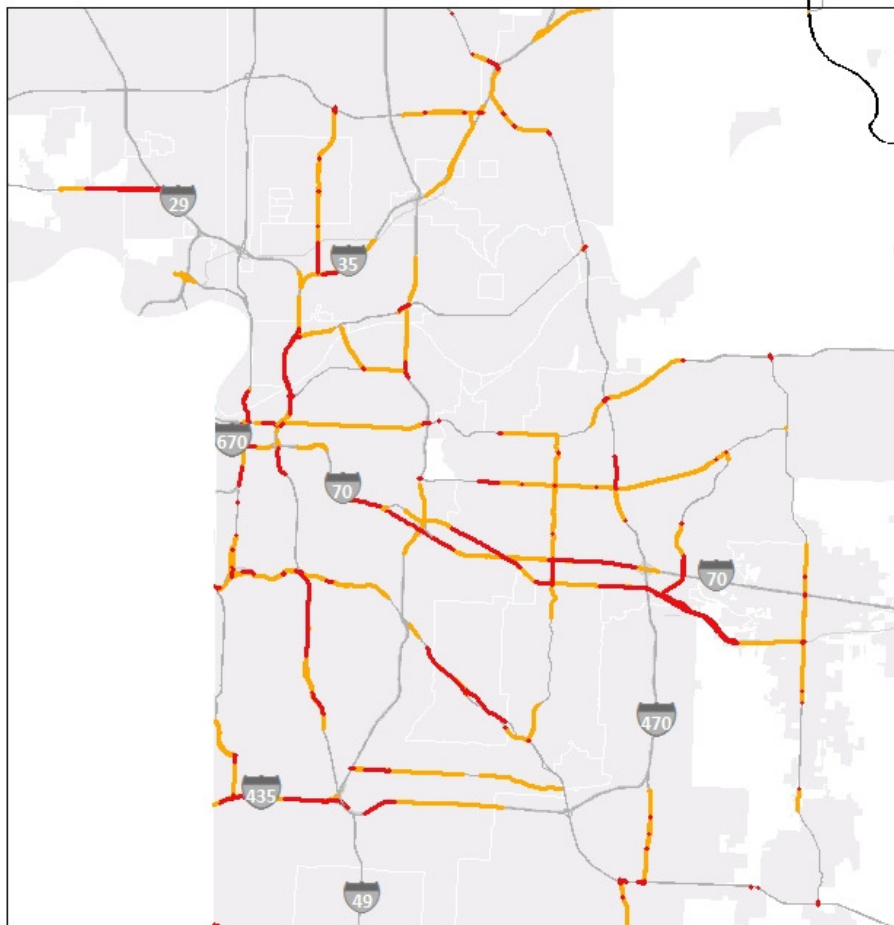
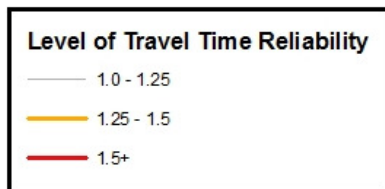
Bridge Condition



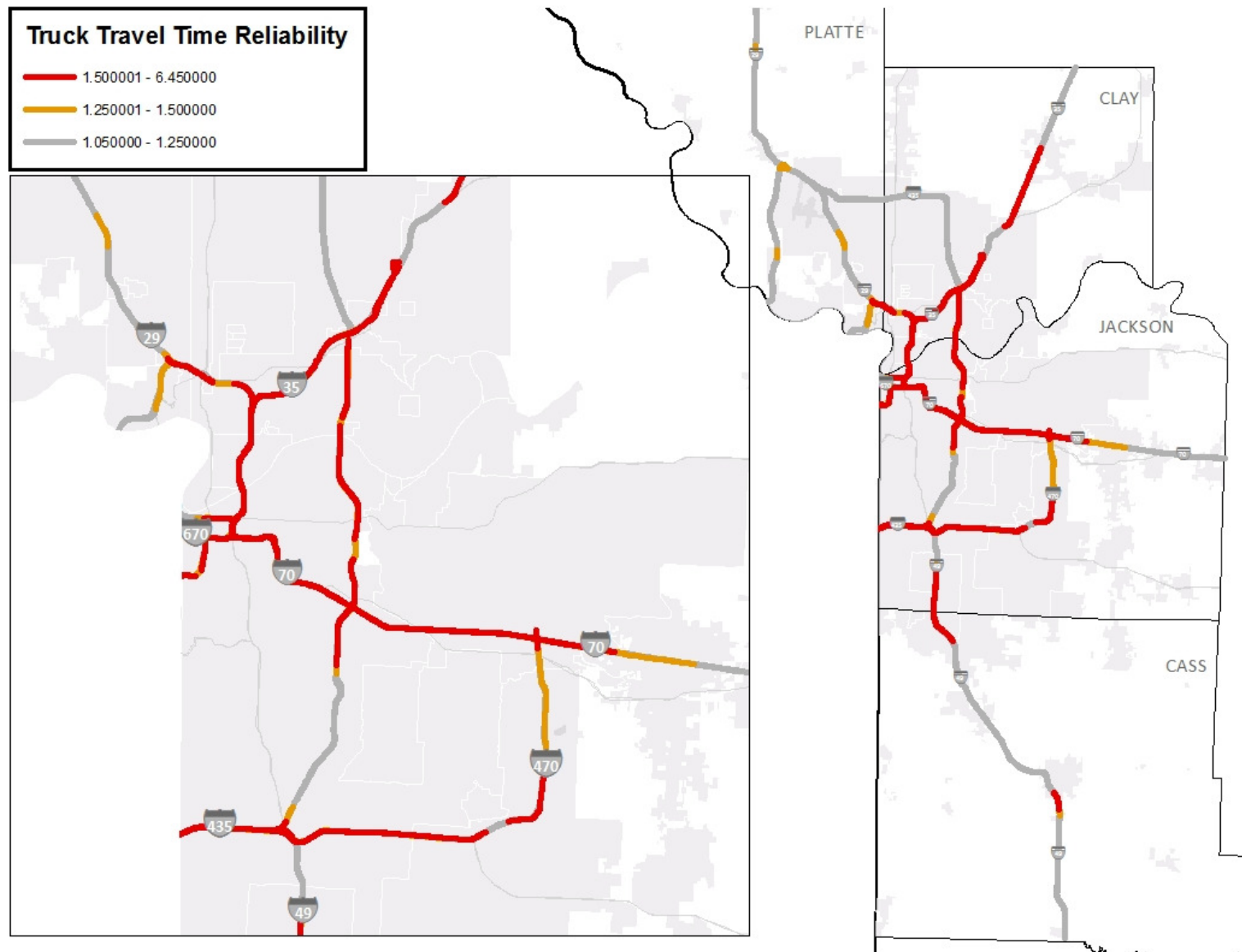
NHS Pavement Condition



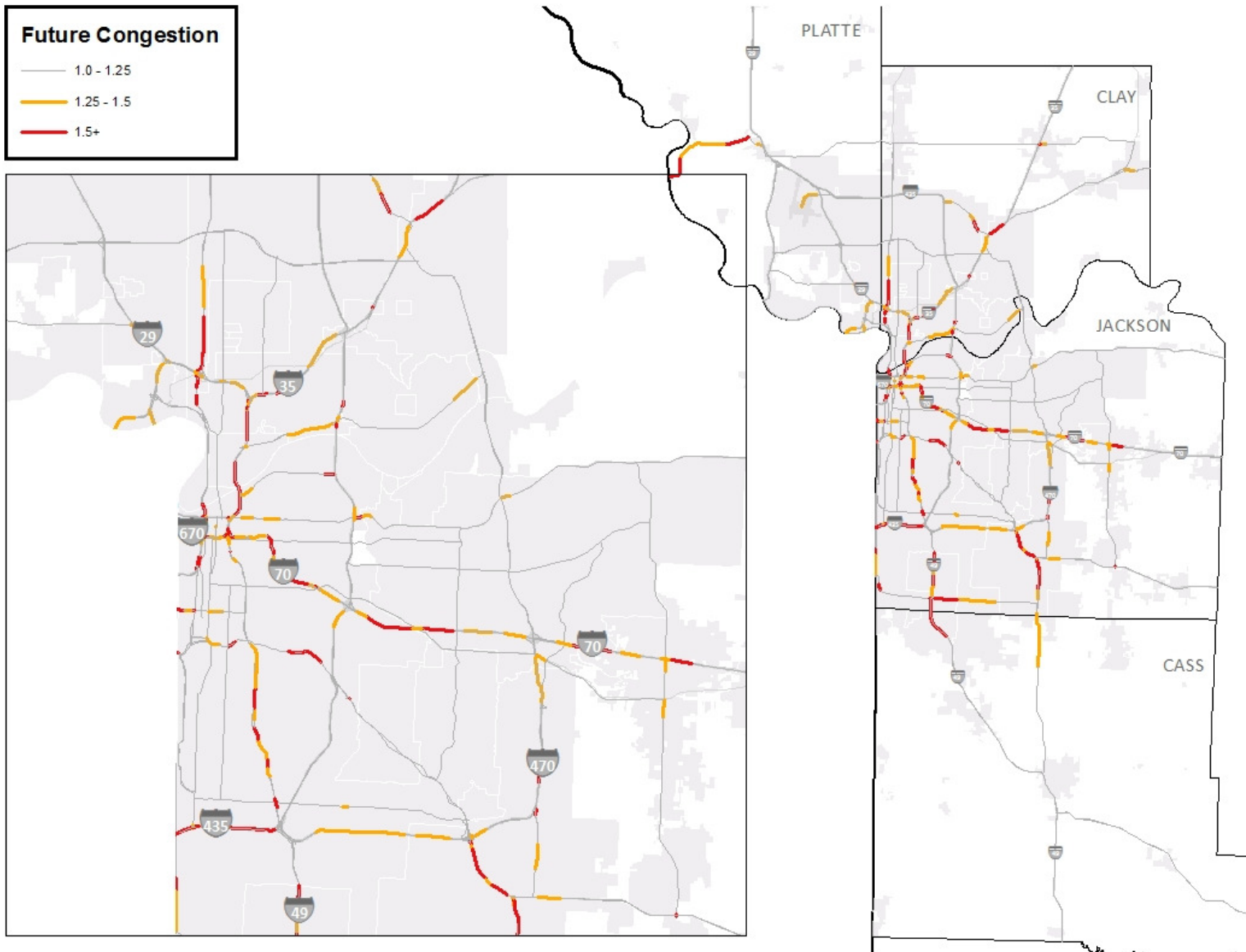
Travel Time Reliability



Truck Travel Time Reliability



Future Congestion



State System Project Priorities

State System Project Priorities

#1 Buck O'Neil Bridge US 169 Corridor



Other State System Project Priorities

Implement preferred strategies from I-70 STEIS (Jackson/Benton curve, fix bottlenecks, bridges)

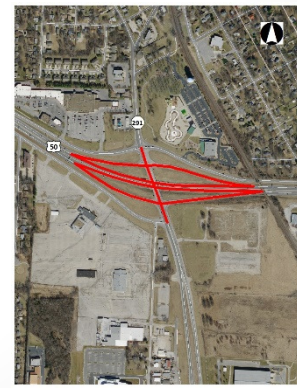
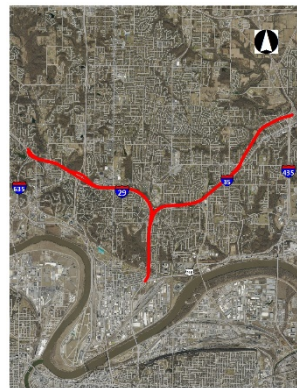
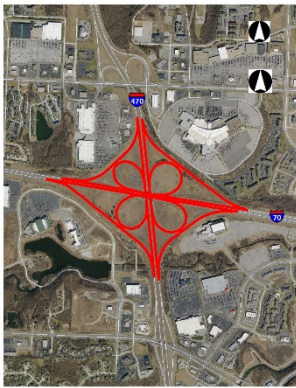
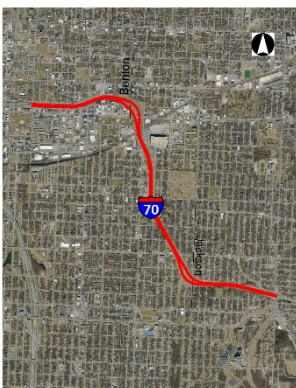
Interchange improvements at I-70/I-470

Add Lanes and interchange improvements on I-29/I-35 in Kansas City (I-29 from MO 210 to I-635 and I-35 from MO 210 to I-435)

Interchange improvements at I-49/Rte 58 interchange in Belton

US 50 and MO 291 North interchange, replace bridges and modify designs

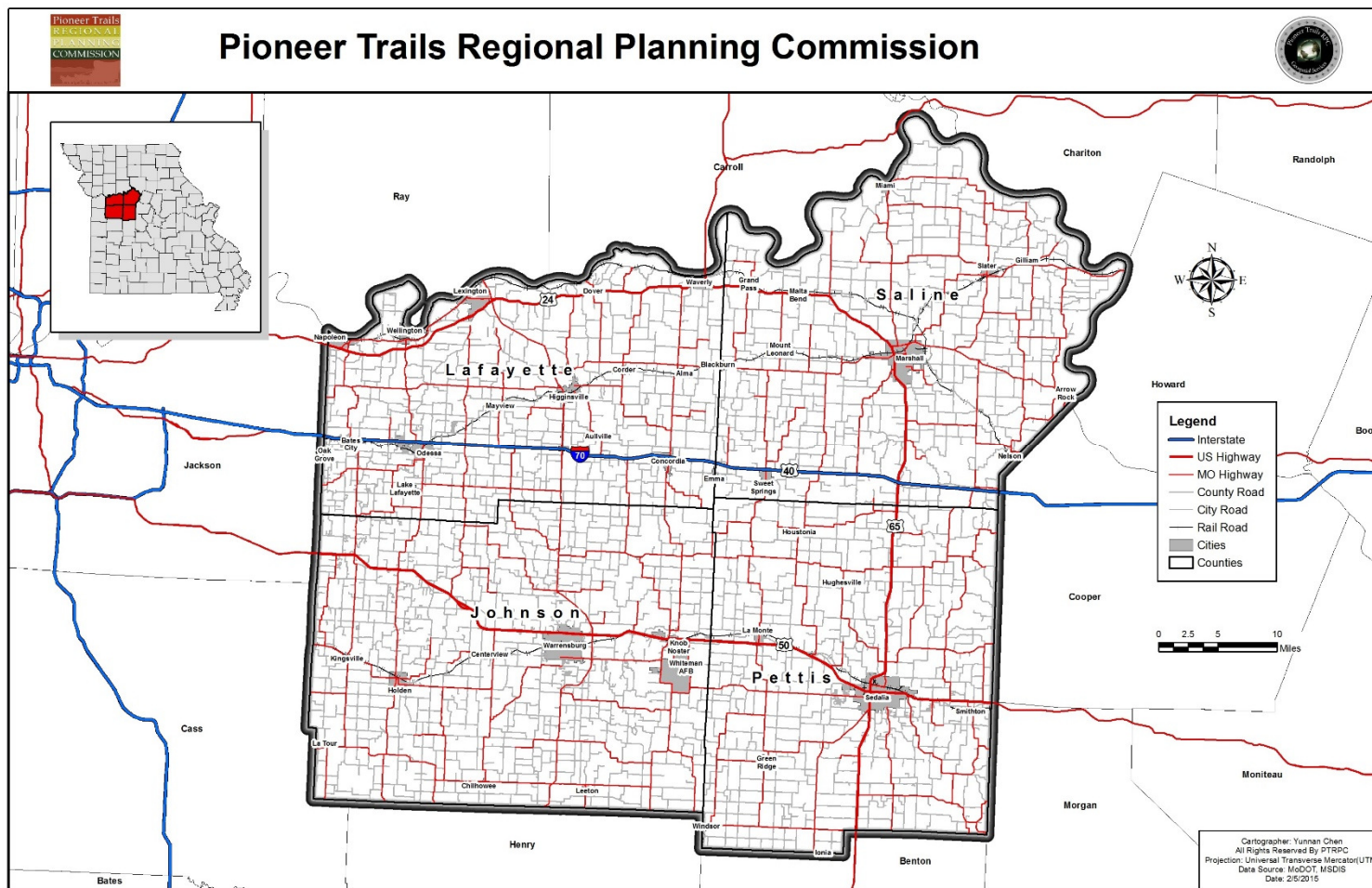
Regional intersection improvements by constructing turn lanes and other traffic flow improvements.



Questions

Ron Achelpohl
Director, Transportation & Environment
Mid-America Regional Council
rona@marc.org
816-474-4240

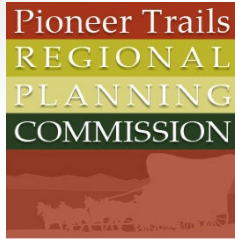
Pioneer Trails REGIONAL PLANNING COMMISSION



Pioneer Trails RPC Prioritization Process

Road and Bridge PTRPC Needs List 2018												Keep Customers and Ourselves Safe			Operate a Reliable and Convenient Transportation System				Advance Economic Development					Regional Scores							
												Long-Range Plan Goal: Safety			Long-Range Plan Goal: Connection and Choices				Long-range Plan Goal: Economic Development					County (Max 50pts.)	Regional (Max 100pts.)	Total Score					
Status	Priority	County	City	Need	Route	Location	TWAY ID	beg log	end log	2016 AADT	2016 Crash Rate	Reduce run-off-road crashes, not in a curve (+2)	Reduce run-off-road crashes, in a curve (+2)	Reduce collisions with roadside objects (+2)	Reduce head-on collisions (+2)	Improve intersection safety (signalized and unsignalized) (+2)	Improves capacity on Route >10,000 AADT (+1)	Improves capacity on Route >5,000 AADT (+1)	Improves capacity on a Route > 2,500 (+1)	Improves capacity on a Principal Arterial (+2)	Improves capacity on a Minor Arterial (+1)	Improves a Tier 1 freight corridor (+2)	Improves a Tier 2 or Tier 3 freight corridor (+1)	Improves access to an industrial park, downtown, business park or tourist attraction (+1)	Addresses a structurally or functionally deficient bridge (+1)	Addresses a highway/railroad grade separation (+1)	Total		Distribute 50 points on projects: 0-25 points per project (increments of 5)	Maximum 100 points in your region (score in this column)	Final Score

[illegible][illegible]



2018 Transportation Needs List



Road and Bridge

- I. Interchange Improvements to US 50 and BUS Rte. 13 (Maguire St.) – Johnson County
- II. Intersection Improvements to US 65 and Rte. 765 – Pettis County
- III. Safety improvements to the intersection of MO 13 and Hwy E – Johnson County
- IV. Interchange Improvements and Bridge Replacement at I-70 and MO 131 – Lafayette County
- V. Intersection Improvements to US 50 and County Rd. 1801 – Johnson County

Bike and Pedestrian/Public Transit

- I. Construct pedestrian overpass over US 65 between Marshall Highschool and Walmart – Saline County
- II. Spirit Trail Construction. E Hale Lake Rd. to Knob Noster State Park Boundary at Bristle Ridge – Johnson County
- III. Railroad improvement and spur construction for public development access – Pettis County
- IV. Retention of Amtrak Rail Line – Johnson County
- V. Connect the Katy Trail. UP Tracks between E. 3rd St. to Boonville St. – Pettis County

Long Range

- I. Upgrade MO 13 to 4 lanes from I-70 to Warrensburg – Johnson County
- II. Reconfigure interchange of I-70 and US 65 (Marshall Junction) – Saline County
- III. Add lanes to US 50 from Sedalia to Morgan County Line – Pettis County
- IV. Add lanes to increase capacity on MO 13 from I-70 to Lafayette County line – Lafayette County
- V. Construct two lane with shoulders US 65 North to US 50 E (Plan and Purchase) – Pettis County

Road and Bridge	
Pettis County	Width and lighting improvements to intersection of US 50 and Winchester Dr.
Saline County	Intersection improvements to Rte. 240 and Rte. C intersection
Saline County	Intersection improvements to Hwy 240 and Hwy 41 intersection
Saline County	Paved 4 ft. shoulder, signage and rumble strips surface and guardrail improvements to Hwy 41 from Rte. AA to Rte. TT
Lafayette County	Road improvements to address safety and traffic from Hwy AA to Higginsville Airport Facilities
Johnson County	Intersection improvements to US 50 and Hwy Z intersection
Lafayette County	Expand Hwy 13 to four lanes, or constructing a designated center turn lane combined with a decreased speed limit between Rte. MM and West 29 th St.
Pettis County	Intersection improvements to US 50 and MO 127 intersection
Johnson County	Intersection improvements to US 50 and Hwy W intersection
Johnson County	Interchange improvements to MO 2 and MO 13 interchange
Lafayette/Saline County	Paved 6 ft. shoulders, signage, rumble strip surface improvements along Hwy 20 from Rte. W to Rte. EE
Pettis County	Widening of US 50 and construct turn lane from US 50 Eastbound onto Northbound Massachusetts
Johnson County	Resurface Hwy Y from MO 13 to Rte. 23
Saline County	Paved 6 ft. shoulders and rumble strips along Hwy 20 from Rte. EE to Hemlock Ave.
Lafayette County	Roadway improvements to address safety concerns along US 65 from MO River E to Saline County line
Bike and Pedestrian/Public Transit	
Johnson, Lafayette, Pettis, Saline	Continue to fund, and retain OATS services
Saline/Lafayette	Designate and upgrade shoulders as a major bike/ped corridor along Hwy 20 from Marshall to Higginsville
Lafayette County	Increase/Retain public transit for people with medical needs
Pettis County	Construct Shoulder and bike path along Hwy Y from State Fair Community College to Quisenberry Rd.
Lafayette County	Construct Fuel Storage Facilities at Higginsville Municipal Airport
Long Range	
Lafayette/Saline Counties	Add a lane each direction (6 lanes, three on each side) to I-70 from Jackson County line to Cooper County Line
Pettis County	Construct NW loop US 65 N to US 50 W
Johnson County	Upgrade MO 13 to 4 lanes from Warrensburg to Southern JOCO line
Johnson, Lafayette, Pettis, Saline	Widen and add shoulders to all lettered Routes
Lafayette County	Utilize 4 lane or 2+1 sections along MO 13 from I-70 to Lexington
Saline/Lafayette Counties	Utilize 2+1 expansion along US 65 from Marshall to Waverly
Lafayette County	Roundabout construction at intersection of MO 20 and MO 23
Pettis County	Widen US 65 to four lanes under Union Pacific Railroad
Pettis County	Widen US 65 North/South through Sedalia
Lafayette County	Replace the KC Southern Railroad overpass on MO 13 in Higginsville, and construct sidewalk with rail or shoulder under rail line
Johnson County	Upgrade MO 13 East loop to four lanes
Saline County	By-Pass construction around Marshall
Pettis County	US 50 E from Sedalia build 4 lanes North side of residential for approximately 2 miles

Road and Bridge: total of 20 projects

Interchange/intersection improvements – 10 (5 programmed [including scoping] with MoDOT)

Resurfacing – 1 (Zero Programmed)

Roadway/Safety Improvements – 8 (Zero Programmed)

Bridge Replacement/Improvements – 1 (Scoping)

Bike Ped/Public Trans: total of 9 projects

Public transportation – 4 (two ongoing, two not programmed)

Bike/Ped – 3 (Zero Programmed)

Trails – 2 (1 under construction)

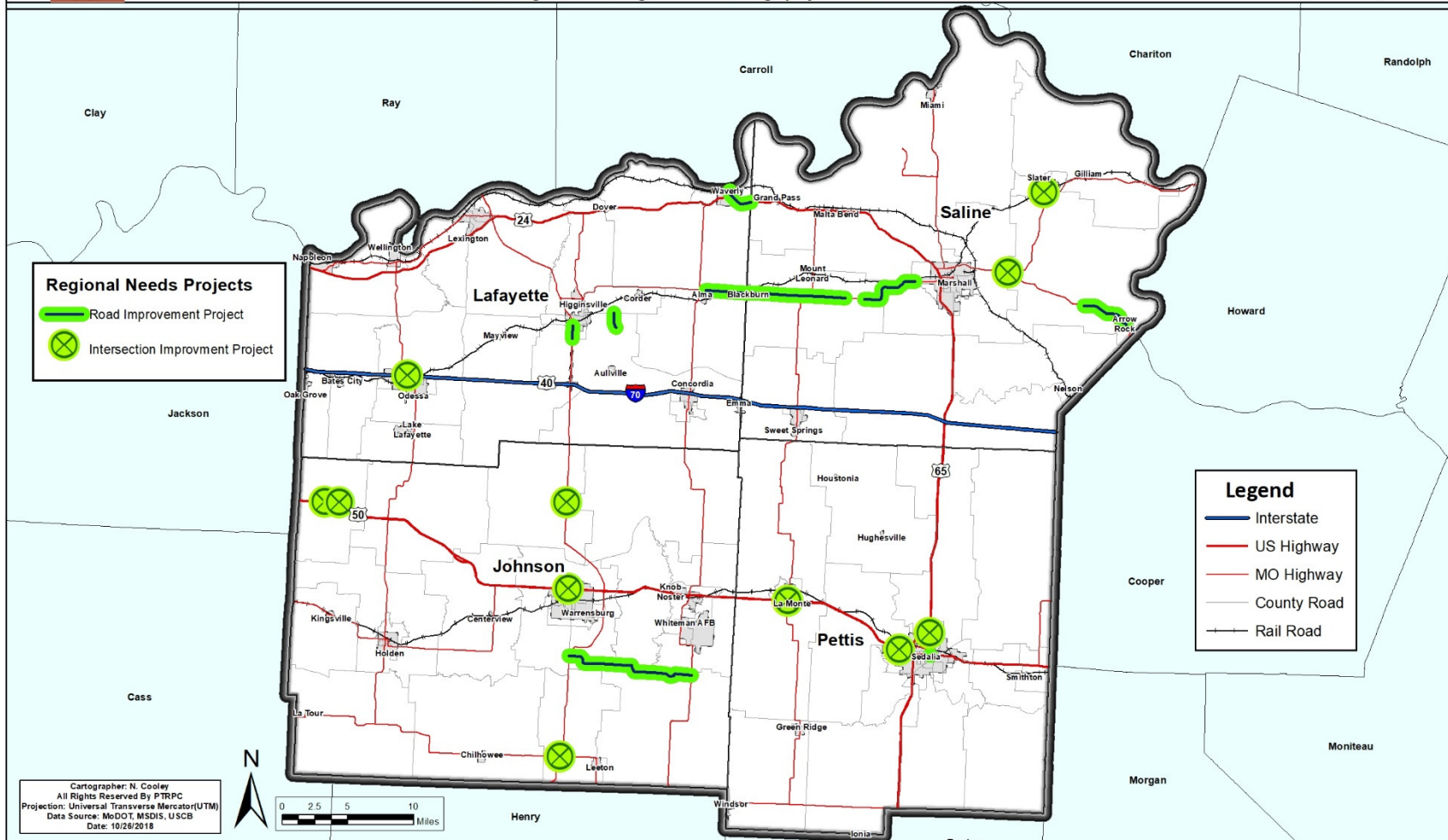
Long Range: total of 18 projects (Zero Programmed)

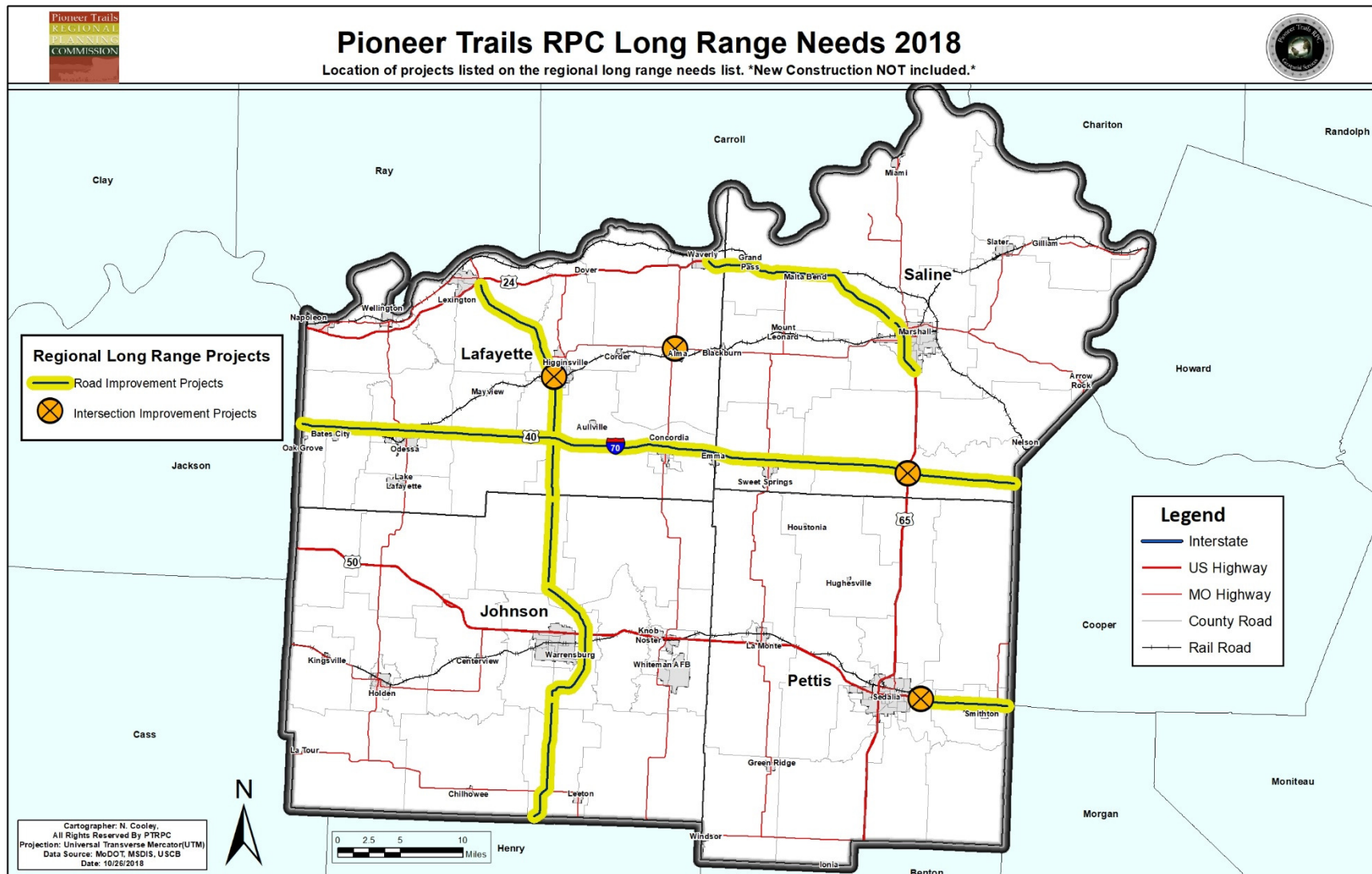
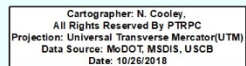
New Construction - 3

System Improvements – 15

Pioneer Trails RPC Regional Road & Bridge Needs 2018

Showing location of regional road & bridge projects from 2018 needs list.





Safety Improvements

Mo Hwy 13 & Hwy E
Intersection



South

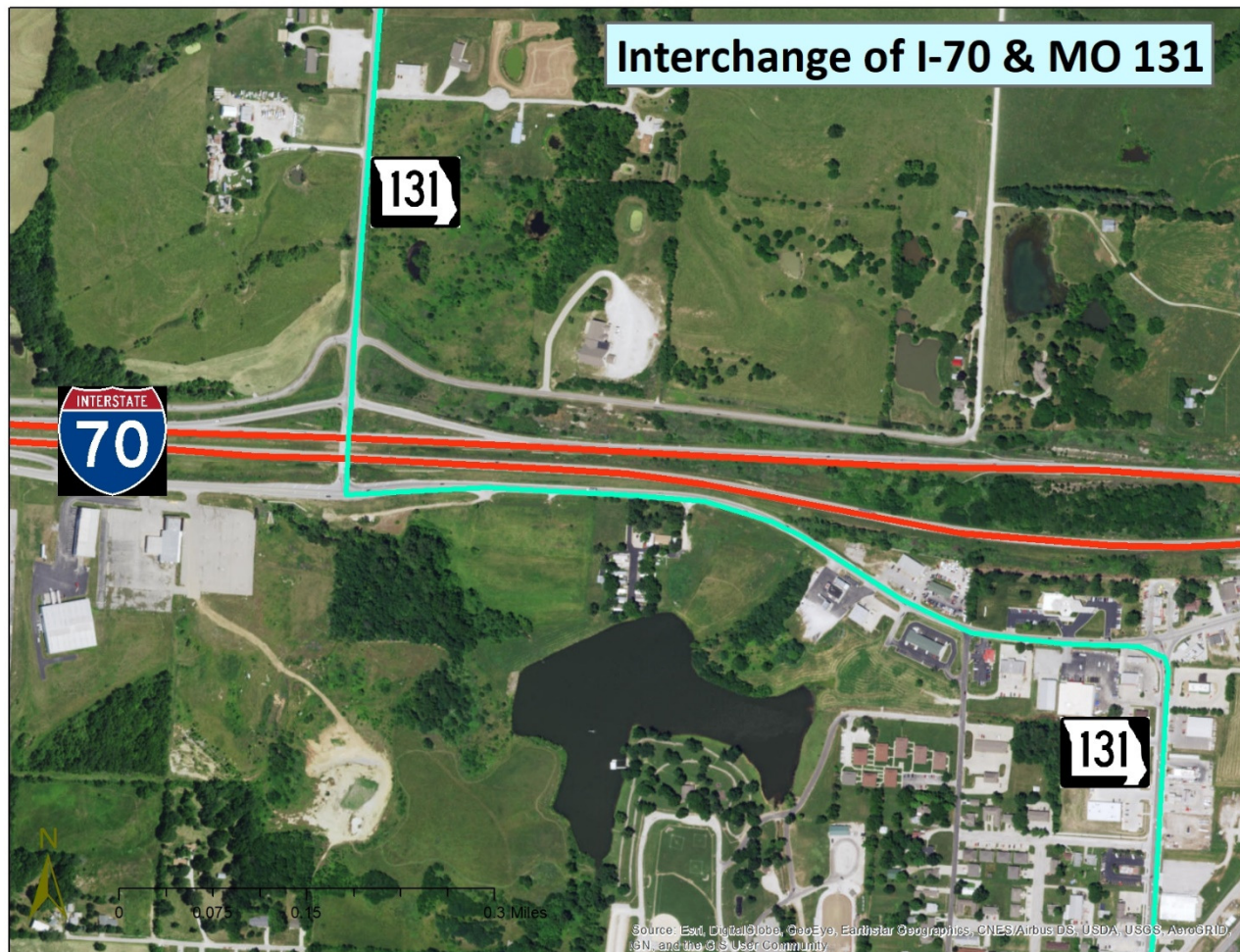


North

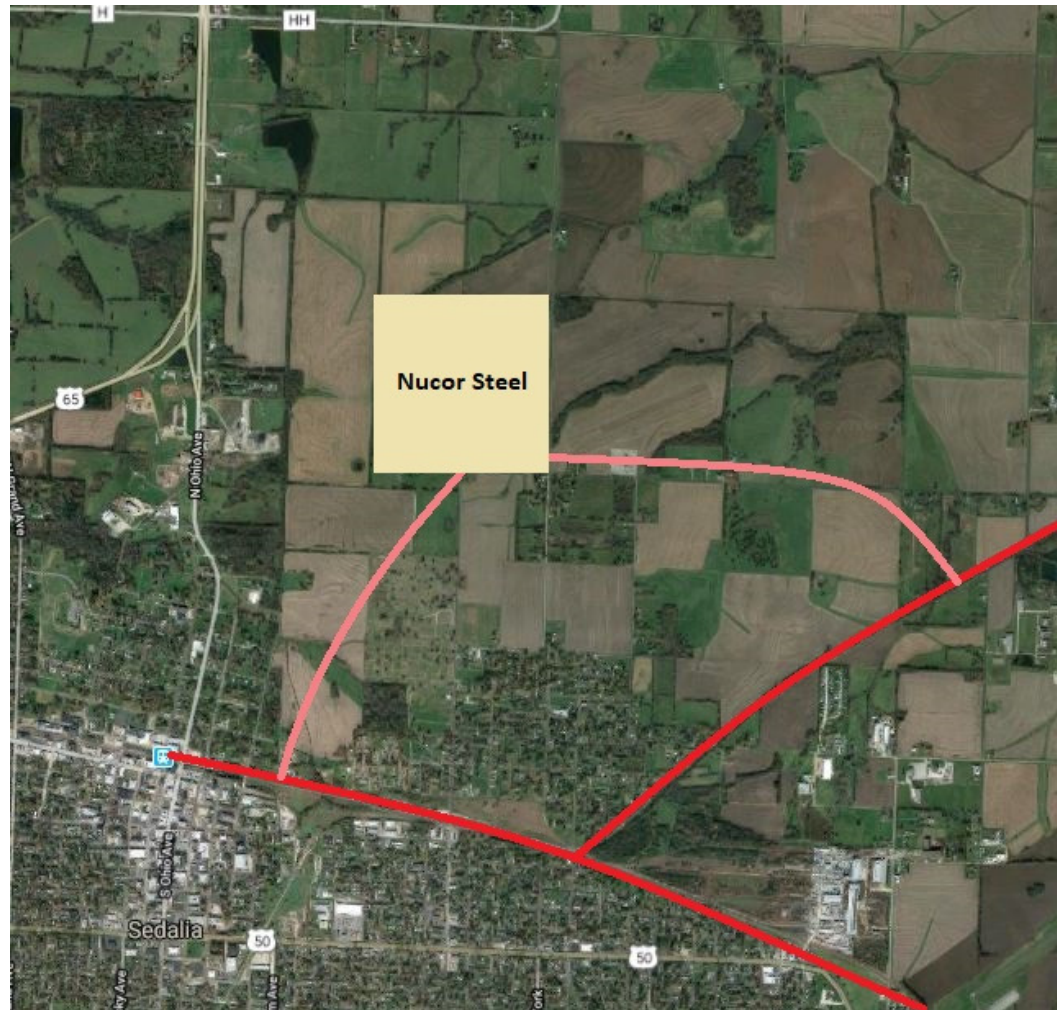
Mo Hwy 13



I-70 and MO 131 (Odessa MO)



Sedalia Rail Spur & NW/NE Bypass

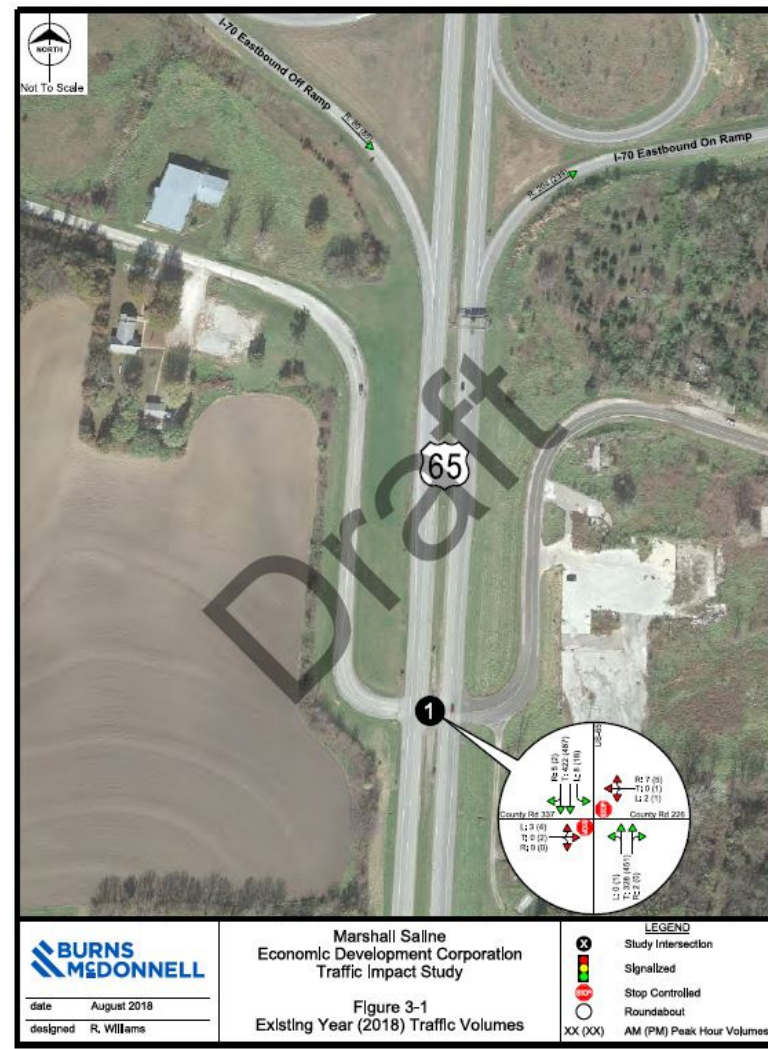
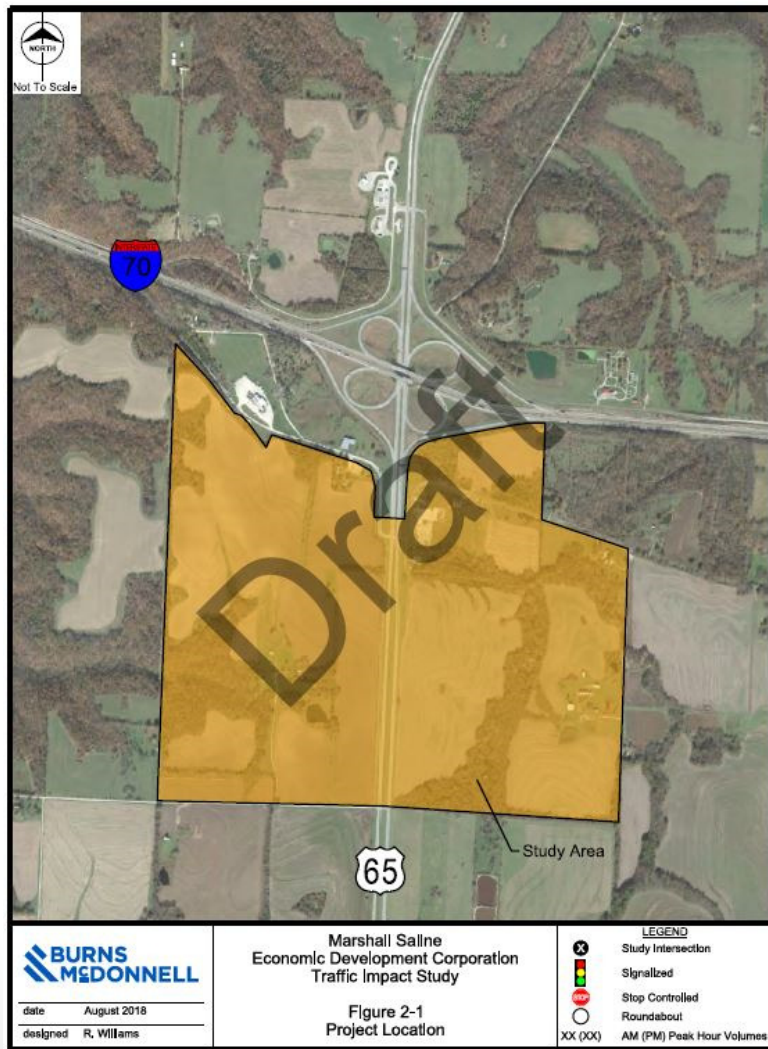


Marshall MO Overpass over US 65 from High School to adjacent Shopping Center

- Lack of sidewalk infrastructure need identified by Juniors at local High School.
- Research was done jointly between students, City Admin., County Economic Development, and County Career Center
- Information was presented to the city and has been continuously ranked high on the Saline County project needs since 2016.



I-70 and US 65 Junction (Marshall Junction)



Ray County

- Traffic Signal Improvements on MO 13 and Main St. (Richmond)
- Intersection improvements at Mo 13 and South Street (Richmond)
- Overlay and shoulders, add rumble strips on Mo 13 from Caldwell County line to South of Bus. 13.
- Minor road resurfacing at various locations.
- Sidewalk construction on Route D in Lawson and on Mo 13 in Richmond.

Next Steps

- **November – March 2019** – Districts work with Planning Partners to prioritize needs
- **May 2019** – Draft STIP presented to MHTC & 30-day public comment period begins
- **July 2019** – Final STIP presented to MHTC

How to Get Involved

Contact Your Local Planning Agency:

Mid-America Regional Council

David Warm - Executive Director

816-474-4240

Pioneer Trails Regional Planning Commission

Norman Lucas - Executive Director

660-463-7934