



REGIONAL TRANSPORTATION NEEDS

SEMO RPC
10/19/2018

Drew Christian

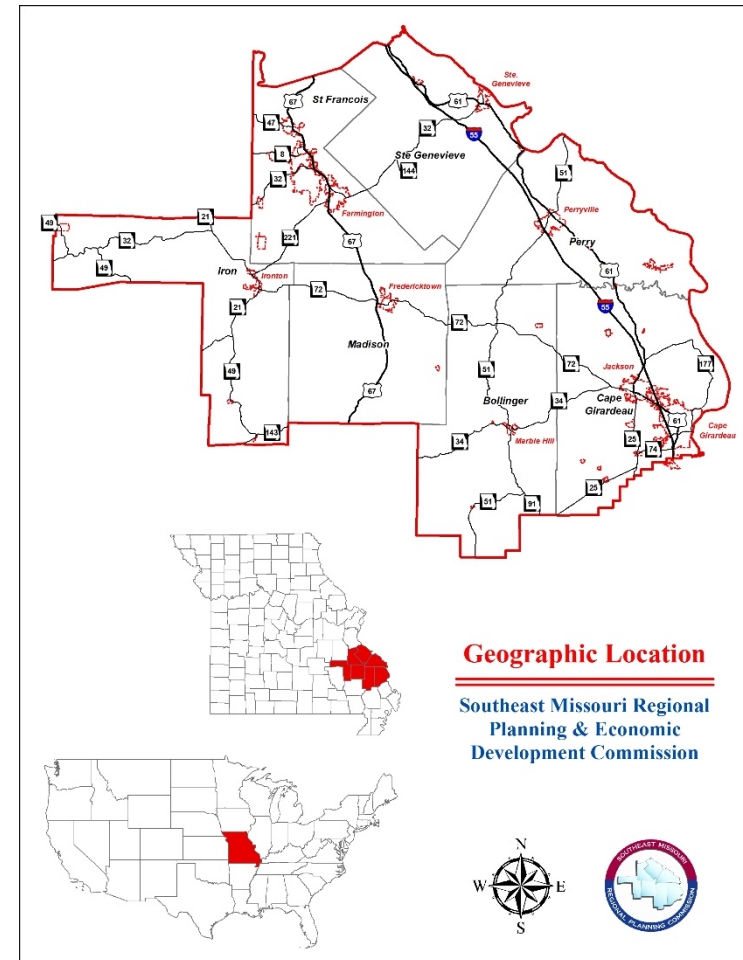


SEMO RPC Overview

SEMO RPC Overview

□ 7 counties and 36 municipalities

- Bollinger
- Cape Girardeau
- Iron
- Madison
- Perry
- St. Francois
- Ste. Genevieve



SEMO RPC Overview



- Population: 215,000
- I-55 & US 67
- Mississippi River & New Bourbon Regional PA
- Rolling terrain



Regional Needs

Regional Needs



- Varied across region, costs, and issues
 - ▣ Signage and striping up to new routes and intersections
 - ▣ Safety, capacity, and economic development

Regional Needs



- ❑ Shoulders on Rte. 72 (Madison & Iron Co)
- ❑ Rte. 32 & Rt. KK intersection safety improvements (Iron Co)
- ❑ Weight sensors at I-55 exit 162 (Ste. Genevieve Co)
- ❑ Signage & striping at Rte. 34 & Rte. B intersection (Bollinger Co)
- ❑ New intersection on I-55 (Perryville)
- ❑ Safety and capacity improvements on Rte. 8 (Desloge)
- ❑ Shoulders & congestion relief on Rte. 61 (Jackson)

Bollinger Co Needs



- ❑ Striping & signage at Rte. 34 & Rte. B intersection
- ❑ Shoulders on Rte. B from Rte. 34 to Rte. 72
- ❑ Striping, signage, rumble strips at Rte. 51 & Rte. 72 intersections

Cape Girardeau Co Needs



- ❑ Safety and congestion improvements to Rte. 61 from Rte. D to I-55 (Jackson)
- ❑ Widen two one-lane bridges on Rte. Z from Clark St. to CR 222 (Gordonville)
- ❑ Additional or improved shoulders on Rte. 61 from Rte. FF to Cape/Perry Co line

Iron Co Needs



- ❑ West bound turn lane on Rte. 32 at Rte. KK
- ❑ Route realignment of Rte. 32 from Rte. 49N to Rte. 49S
- ❑ Re-alignment and shoulders on Rte. 21 at top of hill between Rte. CC to Rte. E

Madison Co Needs



- ❑ Improve shoulders on Rte. 72 from Fredericktown to Ironton
- ❑ Turn lane on Rte. 72 at Fredericktown Highschool
- ❑ Improve geometry on Rte. 72 from Rte. W to CR 250

Perry Co Needs



- ❑ New intersection on I-55 at proposed Rte. AC extension (Perryville)
- ❑ New center turn lane on Rte. 51 from Old St. Mary Rd. to Brenda Ave. (Perryville)
- ❑ Turn lane on Rte. 61 at Rte. AC intersection (Perryville)

St. Francois Co Needs



- ❑ Capacity & safety improvements on Rte. 8 from Hawthorne St. to State St. (Desloge)
- ❑ Congestion improvements at Rte. K and Northwood Dr. (Bonne Terre)
- ❑ Congestion and queuing improvements on Rte. 67 at Rte. 32 intersection

Ste. Genevieve Co Needs



- ❑ Weight sensors & cameras
- ❑ Shoulders on Rte. M from Rte. 61 to Rte. J
- ❑ Realign and/or traffic lights at I-55 and Rte. 32 intersection



Questions & Comments

Questions & Comments

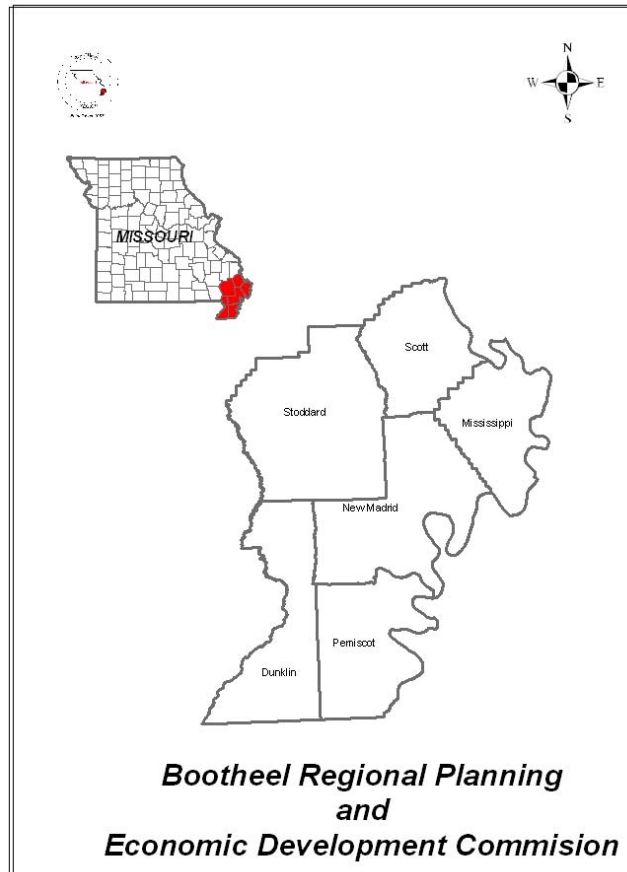


- Drew Christian
 - ▣ Deputy Director
 - ▣ dchristian@semorpc.org
 - ▣ 573-547-8357 x315

Bootheel Regional Planning & Economic Development Commission



105 E North Main St.
Dexter, MO 63841
Phone: 573-614-5178

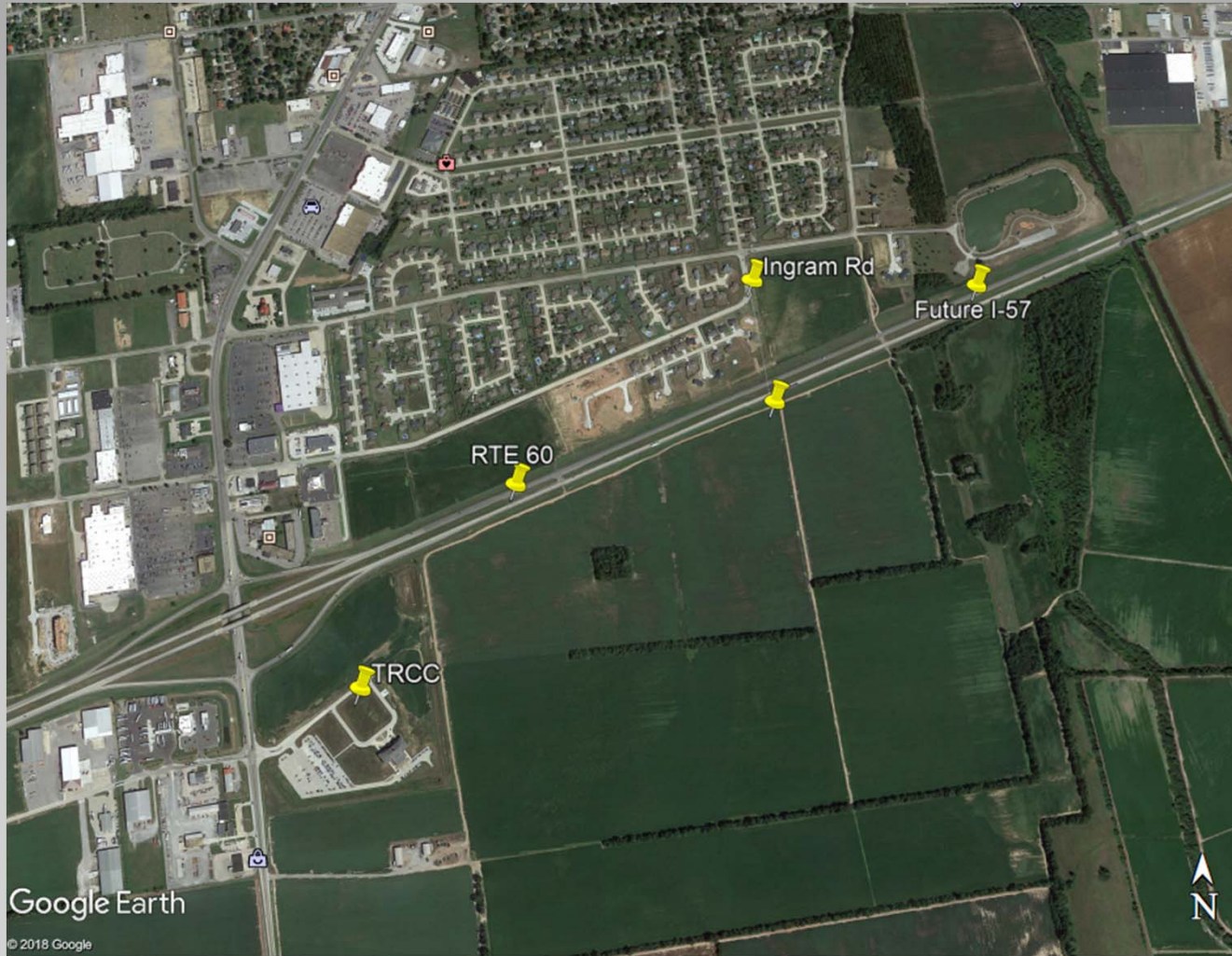


Six County Service Area



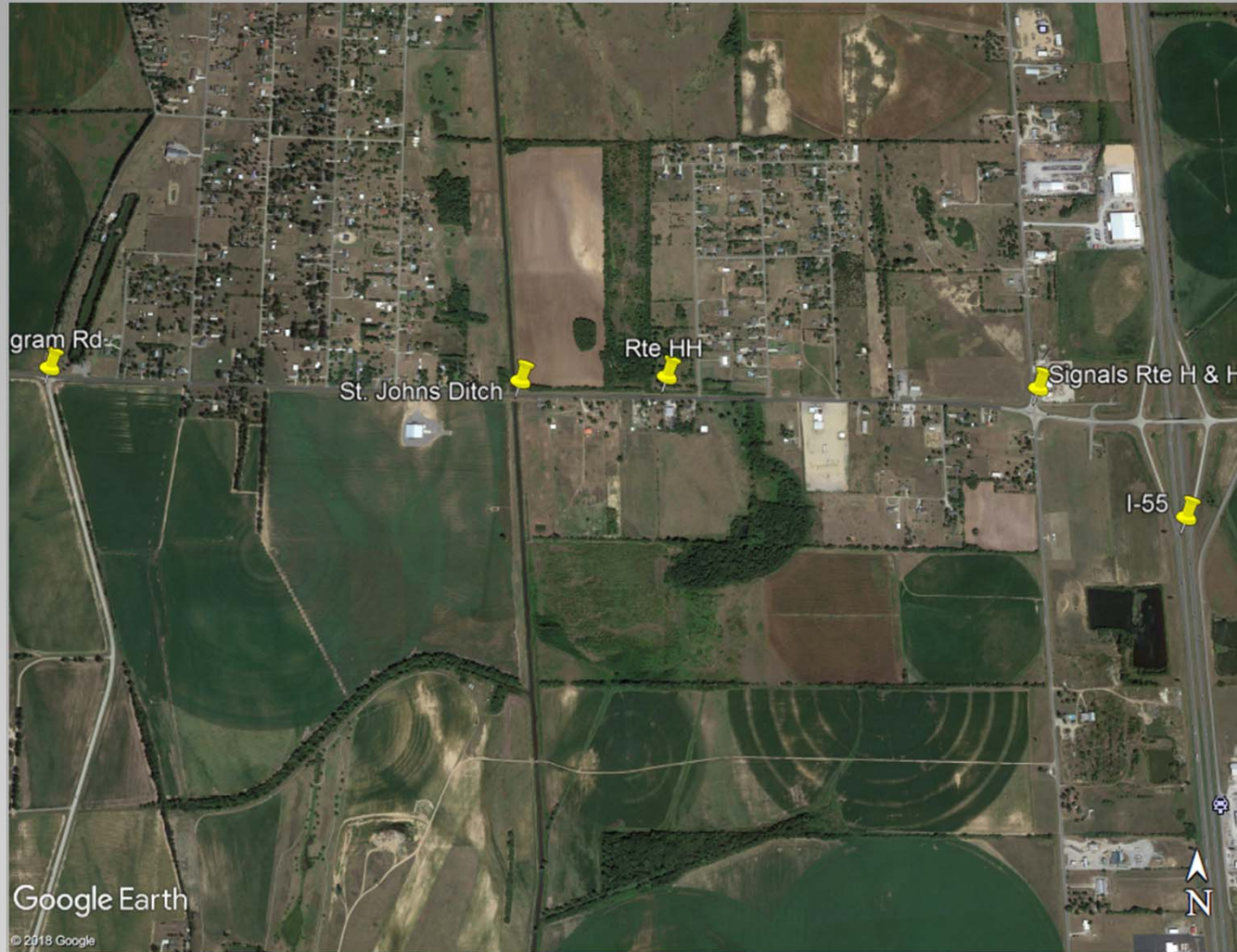
- Transportation Advisory Committee (TAC) meeting held October 16, 2018
 - Prioritized Projects
- Rankings for the Region
 - New Madrid County—Interchange
 - Scott County—Center lane Rte HH
 - Dunklin—Four lane Rte 412 (6mi)
 - Stoddard—Resurface
 - Pemiscot—Resurface
 - Mississippi—New bridge construction





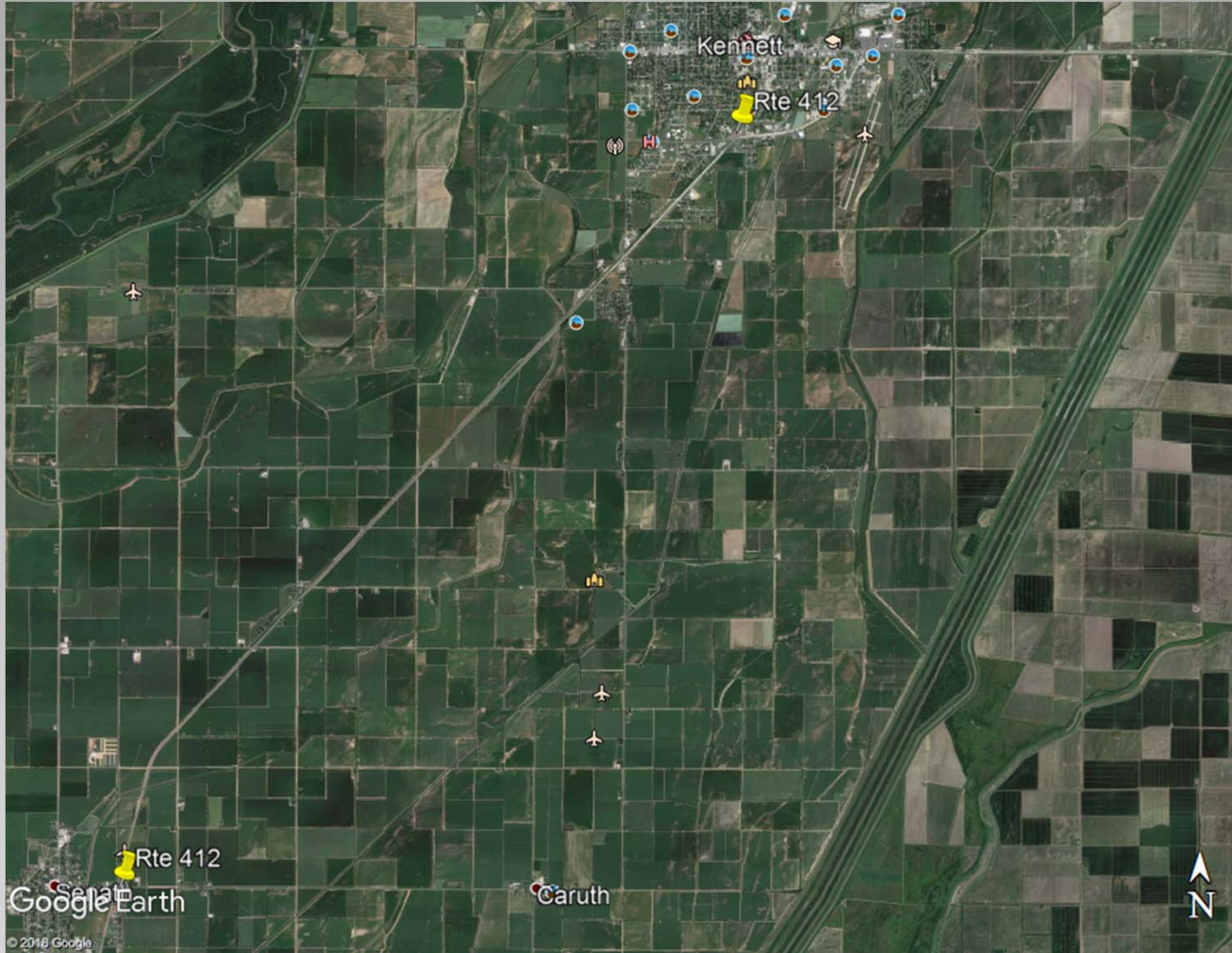
New Madrid County





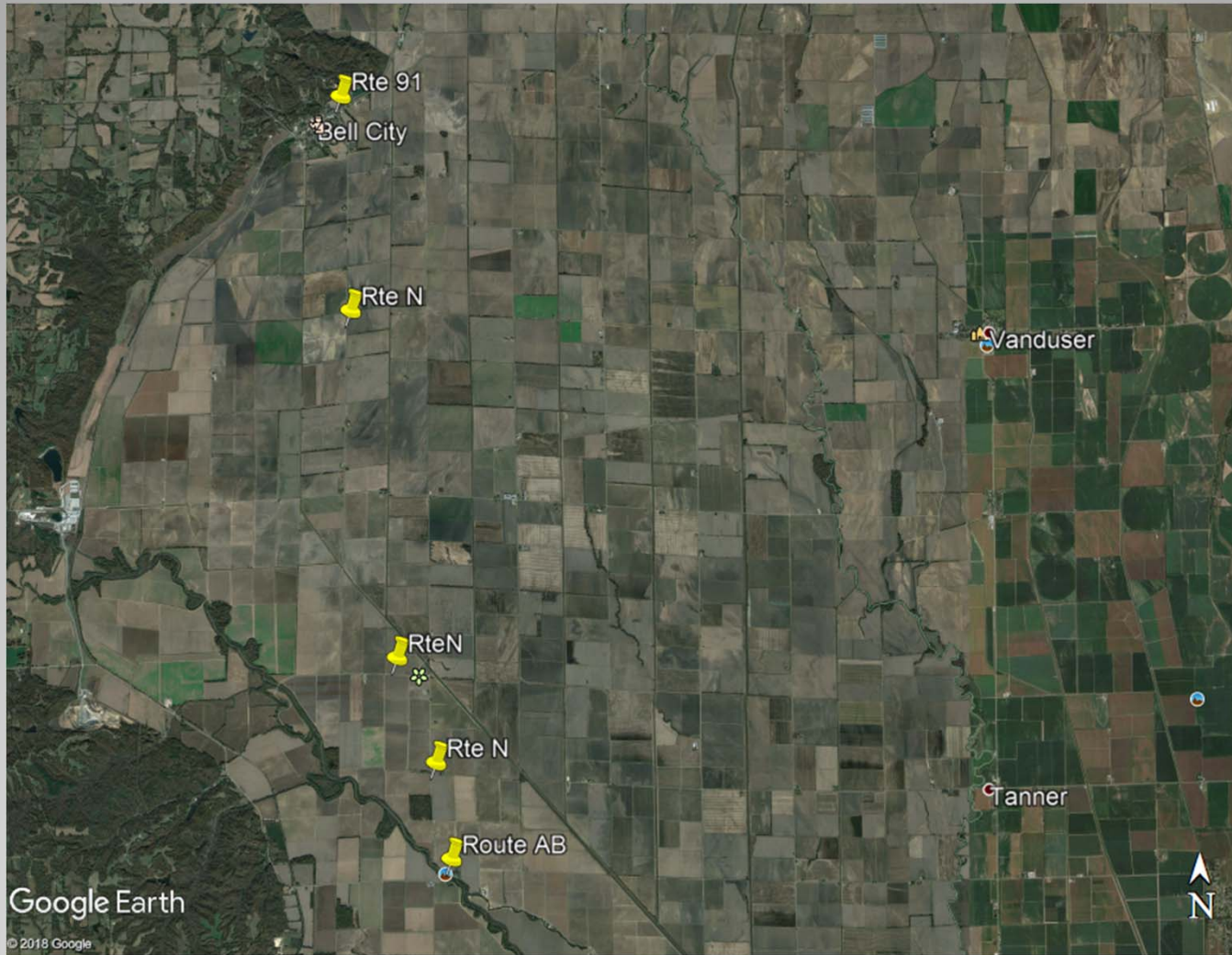
Scott County





Dunklin County





Stoddard County





Pemiscot County





Mississippi County





Multi-modal New Madrid County



Bootheel Regional Planning & Economic Development Commission

573-614-5178

bootrpc@bootrpc.com

bootrpc.com

105 E North Main St.

Dexter, MO 63841

Contact Information

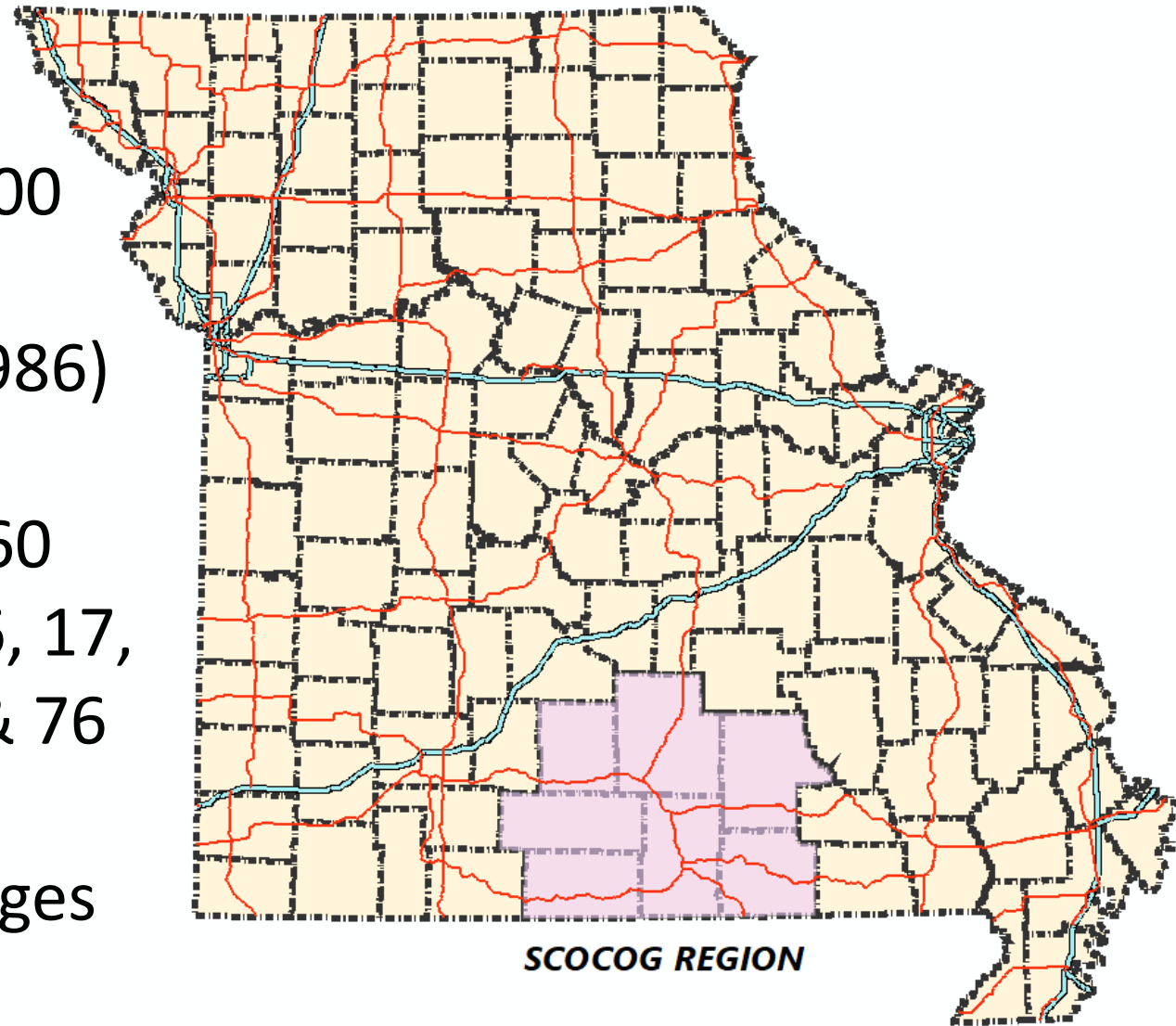




South Central Ozark Transportation Advisory Committee

SOUTH CENTRAL OZARK COUNCIL OF GOVERNMENTS
POMONA MO

- **Regional Population:**
118,229 (2010 census)
7.5% increase from 2000
- **Largest City:**
West Plains (pop. 11,986)
- **Major Routes:**
US HWYs 60, 63 and 160
MO RTEs 5, 95, 38/106, 17,
99, 19, 142, 181, 137 & 76
- **Bridges:**
239 State System Bridges



TRANSPORTATION ADVISORY COMMITTEE

- THREE REPRESENTATIVES FROM EACH OF OUR SEVEN COUNTIES
- PRESIDING COMMISSIONER + TWO APPOINTED AT-LARGE MEMBERS
- **TOTAL OF 21 VOTING MEMBERS**
- MEETS QUARTERLY

TAC MEETING - APRIL 2018 – HOUSTON, MO





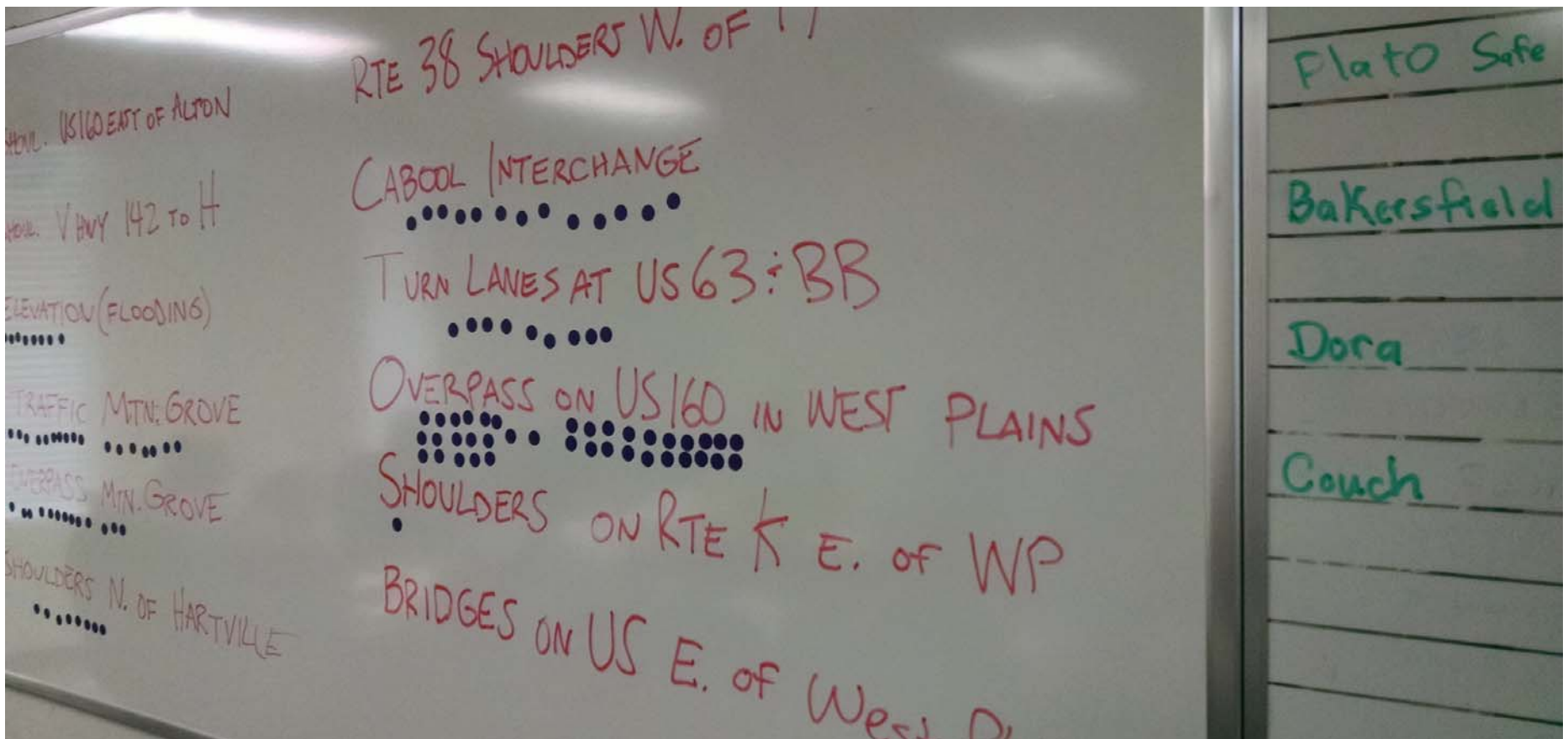
TRANSPORTATION ADVISORY COMMITTEE

- THREE REPRESENTATIVES FROM EACH OF OUR SEVEN COUNTIES
- PRESIDING COMMISSIONER + TWO APPOINTED AT-LARGE MEMBERS
- **TOTAL OF 21 VOTING MEMBERS**
- MEETS QUARTERLY

PRIORITIZATION MEETING – AUGUST 2016 - SCOCOG



PRIORITIZATION MEETING – AUGUST 2016 - SCOCOOG



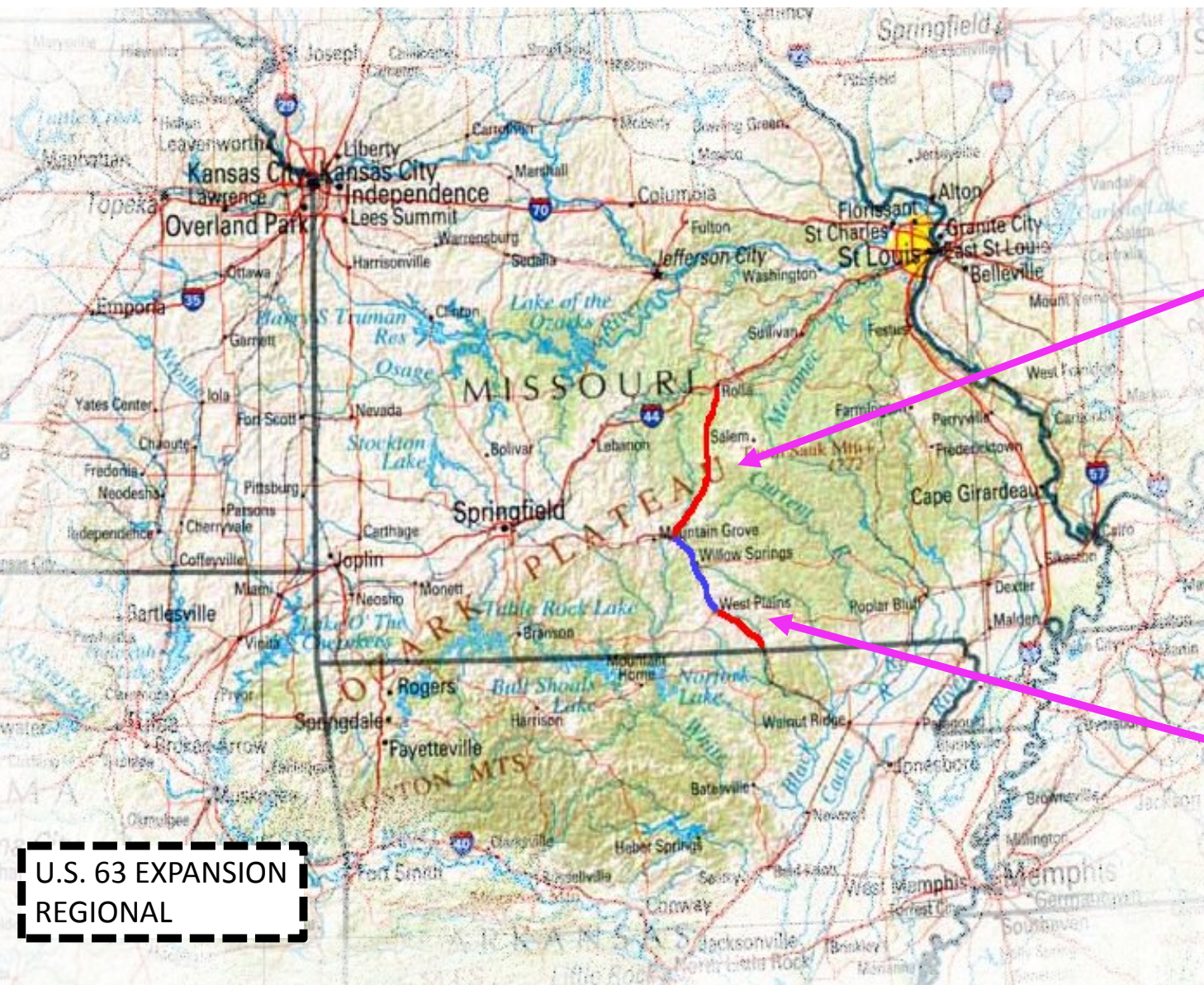
FY2019

PRIORITY

LIST

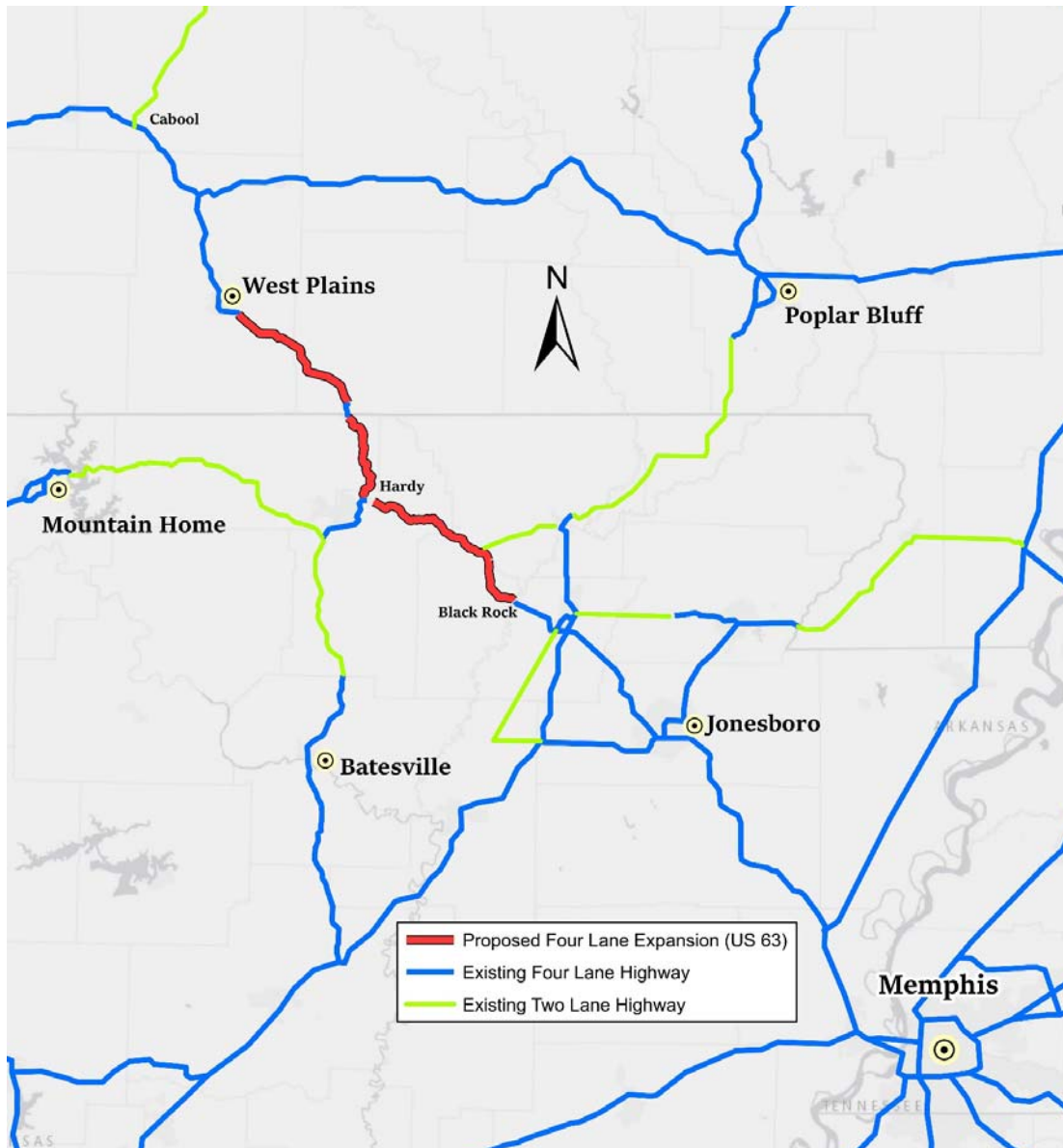
**SOUTH CENTRAL OZARK TRANSPORTATION ADVISORY COMMITTEE
REGIONAL PRIORITIZATION RESULTS – August 21, 2018**

Project		Route	County	Planning Category
1	Implement improvements to address hydroplaning and safety concerns on US 63 between Routes H and Z in Texas County	US 63	Texas	Safety
2	Continue paved four-foot shoulders from Route A in Douglas County to the City of Gainesville in Ozark County	MO 5	Douglas/Ozark	Safety
3T	Construct a railroad overpass on US 160 (Independence Drive) in West Plains	US 160	Howell	Safety/Economic Development
3T	Install additional safety signage and turning lanes from Route 5 onto Route Y/NW 3rd Avenue in the City of Ava	MO 5	Douglas	Safety
5	Traffic capacity improvements on Route 95 in Mountain Grove	MO 95	Wright	Capacity
6	Implement improvements to alleviate heavy truck congestion on Route 181 between Main Street and Bluebird Street in Cabool	MO 181	Texas	Capacity/Economic Development
7	Expand Route 17/CC (Gibson Avenue) to five lanes from US 63 to Business 63 in West Plains	MO 17 / RTE CC	Howell	Capacity
8	Replace and/or widen the Wildcat Creek bridge on State Route 14 east of Ava in Douglas County	MO 14	Douglas	Safety
9	Construct a roundabout at Business Route 5 and North Jefferson Avenue in Ava	BUS. 5	Douglas	Capacity
10	Install turning lanes from US 160 onto Bulldog Drive in Gainesville	US 160	Ozark	Safety
11	Implement flood mitigation measures on Route 142 east of the 11 Point River bridge in Oregon County	MO 142	Oregon	Safety/Traffic



**65 MILES
CABOOL TO ROLLA**

**26 MILES
WEST PLAINS TO THAYER**



**EXISTING FOUR LANE
AND
TWO LANE HIGHWAYS
IN
N.E. ARKANSAS VICINITY**



INDEPENDENCE DRIVE OVERPASS PROJECT
WEST PLAINS, MO



ROUTE 95 CAPACITY -
MOUNTAIN GROVE, MO

Wal-Mart Shopping Center

US Highway 60

R-VII Schools

Downtown Square



ROUTE 142 FLOOD MITIGATION
OREGON COUNTY, MO



ROUTE 142 FLOOD MITIGATION
OREGON COUNTY, MO

AKERS FERRY CROSSING
SHANNON COUNTY, MO



ONE LANE BRIDGE
ROUTE ZZ
HOWELL COUNTY, MO

State Hwy Zz

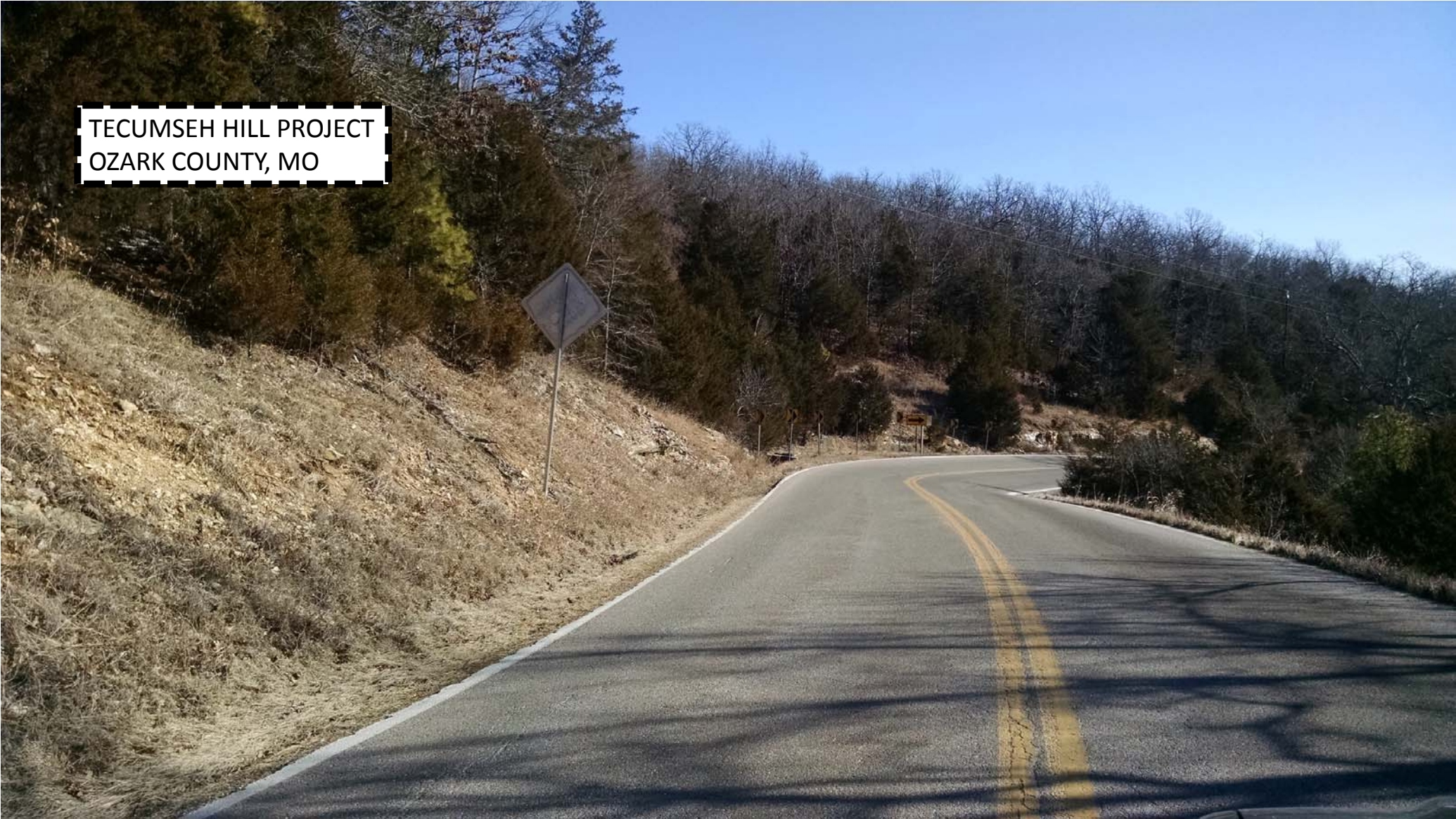
© 2015 Google

Google

TECUMSEH HILL PROJECT
OZARK COUNTY, MO



TECUMSEH HILL PROJECT
OZARK COUNTY, MO



T12	Install safety measures at the intersections of US 60 and Routes 99 and 19 in Birch Tree & Winona	US 60	Shannon	Safety
T12	Implement drainage improvements on Route AB, approximately one mile west of US 160 in Howell County	RTE AB	Howell	Safety/Traffic
T14	Replace and elevate three low water crossings on Route H in southeastern Shannon County	RTE H	Shannon	Safety/Traffic
T14	Implement safety measures at the intersection of US 63 and Route 19 in Thayer	US 63	Oregon	Safety
T16	Install rumble strips on State Route 19 from Eminence to Route KK in northern Shannon County	MO 19	Shannon	Safety
T16	Install turning lanes from US 63 onto Route M north of Koshkonong in Oregon County	US 63	Oregon	Safety
T18	Install rumble strips on Route 38 east of Hartville to Route 17 in Texas County	MO 38	Wright/Texas	Safety
T18	Install rumble strips on Route Y from State Route 38 to the Black Oak Landfill in Wright County	RTE Y	Wright	Safety
20	Widen the road and install rumble strips on Route 181 east of Bryant Creek bridge in Ozark County	MO 181	Ozark	Safety

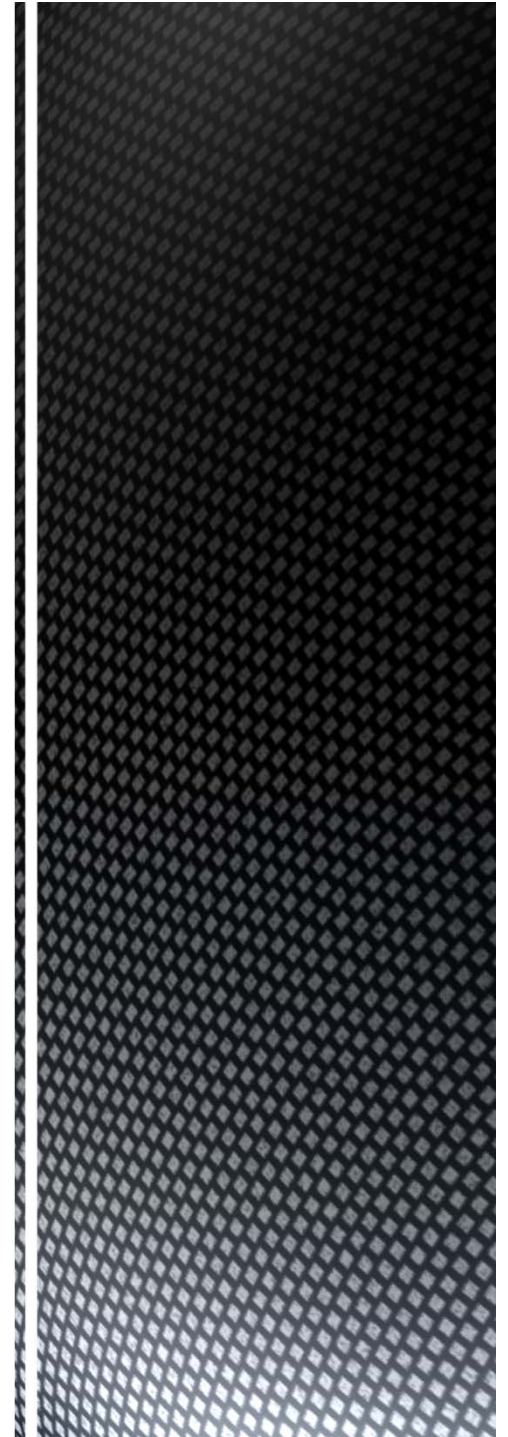
An aerial photograph of a small town nestled in a valley. The town is surrounded by dense forests with trees showing autumn colors. A winding road or path curves around the town, and a river or stream flows through the lower right. The word "QUESTIONS?" is overlaid in the upper right corner.

QUESTIONS?

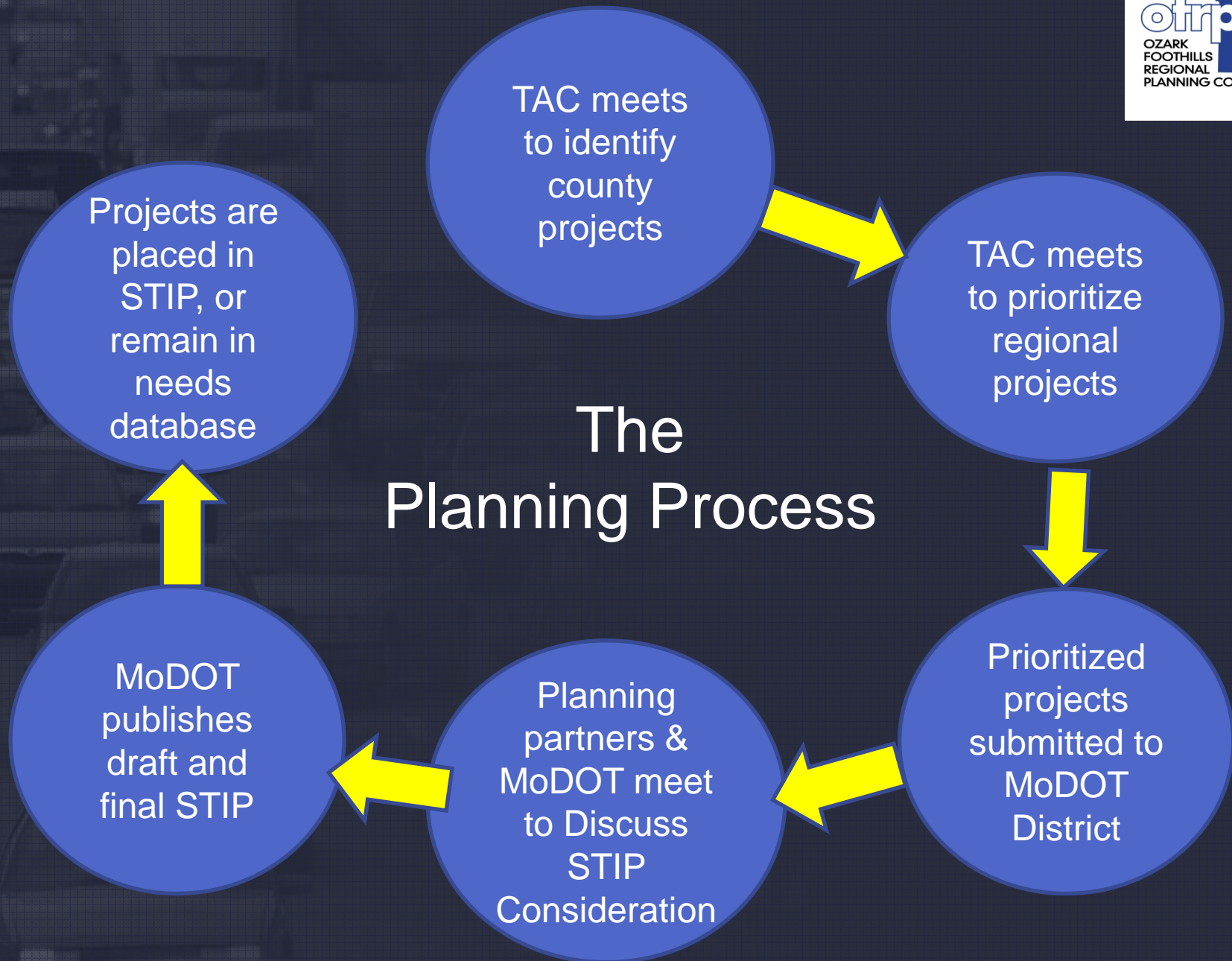


Felicity Ray
Executive Director

Andrew Murphy
Transportation Planning Coordinator



The Planning Process



What the TAC prioritizes

- New Construction Projects
 - Ex. I-57 Corridor
- Maintenance
 - Ex. Overlay
- Multi-modal
 - Ex. Bike/ped



Top Regional Project Needs



Ozark Foothills Regional Planning Commission Transportation Advisory Committee FY19 Project Priority List

Overall Transportation Advisory Committee (TAC) Project Priorities
(Adopted July 12, 2018)

Ozark Foothills Region Priorities

1. Add bike lane for TransAmerica Bike Trail on Highway 76 Bike Route in Reynolds County
2. Highway 142 Between Naylor and Doniphan: Eliminate three one-lane bridges in Ripley County. Includes Ditch No. 2 and Harris Creek
3. Overlay and add shoulders to D Highway in Carter County
4. (tie) I-57 Corridor Upgrades with emphasis from Highway 160 to the state line in Butler County
4. (tie) Repair small bridge on A Highway (1/2 mile west of Highway 67) with large box culvert in Wayne County

Identified Priorities by County - 2018



Butler County

1. I-57 Corridor Upgrades with emphasis from Highway 160 to the state line

2. Route T: 2 foot asphalt shoulders from Butler County line to Highway 60

3. Route M: Add shoulders to route and level hill or reroute County Road 459/M Highway junction

Carter County

1. Overlay and add shoulders to D Highway

2. Route N: Widen and eliminate one-lane bridge over Middle Brushy Creek

3. Route A: Eliminate narrow bridge in Ellsinore

Reynolds County

1. Highway K: Ellington to Annapolis, add shoulders

2. Add bike lane for TransAmerica Bike Trail on Highway 76 Bike Route

3. Replace Highway F Bridge

Ripley County

1. Between Naylor and Doniphan: Eliminate three one-lane bridges

2. Highway 142 West at Gatewood – Narrow bridge

3. State Route K: Straighten “S” curve

Wayne County

1. Low Water Dip on C Highway approximately 1 mile northwest of C & E Junction

2. Safety Shoulders on Highway 49 from Highway 67 to Mill Spring and widen existing box culverts

3. Repair small bridge on A Highway (1/2 mile west of Highway 67) with large box culvert

Top Maintenance Needs



Ozark Foothills Regional Planning Commission Transportation Advisory Committee FY19 “Maintenance Needs” List

Overall Transportation Advisory Committee (TAC) “Maintenance Needs” Priorities
(Adopted July 12, 2018)

Ozark Foothills Region

1. Redesign median crossover of Highway V and Highway A at US Highway 60 in Ellsinore in Carter County
2. Resurface Highway 49 from Williamsville to Iron County Line in Wayne County
3. *(tie)* Overlay O Highway in Reynolds County
3. *(tie)* Add Shoulders on Highway 160 W from Doniphan to C Highway in Ripley County
4. VV Highway – Resurface entire route in Butler County

Top Multi-Modal Needs



Ozark Foothills Regional Planning Commission Transportation Advisory Committee FY19 “Multi-Modal Needs” List

Overall Transportation Advisory Committee (TAC) “Multi-Modal Needs” Priorities
(Adopted July 12, 2018)

Ozark Foothills Region Priorities

1. Add bike lane for TransAmerica Bike Trail on Highway 76 Bike Route in Reynolds County
2. Add sidewalks on Highway Street, from Lafayette to Walnut Street in Doniphan in Ripley County
3. Extend pedestrian trail to tie Handy Park to existing trail system in Piedmont in Wayne County
4. *(tie)* Extend the Poplar Bluff airport runway in Butler County
4. *(tie)* Construct new helipads in Carter County

Examples of STIP Placement & Scoping



2017-2021 Highway and Bridge Construction Schedule

Transportation Planning

P.O. Box 270
Jefferson City, MO 65102

Construction contingency applied to construction cost in the year the project is awarded.

Three percent project growth factor compounded annually is applied to right-of-way and construction costs in program years 2, 3, 4, and 5.

No inflation is applied to the Funding From Other Sources (FFOS) or Payments.

Engineering includes PE costs, CE costs and R/W incidentals.

						STATE FISCAL YEAR PROJECT BUDGETING					
						Prior Prog.	7/2016- 6/2017	7/2017- 6/2018	7/2018- 6/2019	7/2019- 6/2020	7/2020- 6/2021
County:	Wayne	Bridge improvements over McKenzie Creek. Project involves bridge H0899.				Engineering:	5	81	0	0	0
Route:	MO 49					R/W:	0	11	0	0	0
Job No.:	9P3124					Construction:	0	623	0	0	0
Length:	0.07	MPO:	N			FFOS:	0	0	0	0	0
Fund Cat:	Taking Care Of System	Fed:	571	State:	144	Local:	0				
Sec Cat:	Rehab And Reconst	Awd Date:	Spring 17	Anticipated Fed Cat:	NHPP	Payments:	0	0	0	0	0
TIP #:		Future Cost:	0	Estimate Total:	720						



2019 - 2023 Scoping and Design Projects

Transportation Planning

P.O. Box 270
Jefferson City, MO 65102

						STATE FISCAL YEAR PROJECT BUDGETING (ENGINEERING)		
						Prior Prog.	7/2018- 6/2019	7/2019- 6/2023
County:	Butler	Scoping for safety improvements from County Road 472 to County Road 470.				5	5	1
Route:	RT M	Job No:	953453	AC-State	5			
Anticipated Federal Category: STBG				State	1			
				Local	0			
				Future Cost: 301 - 1,000				



I-55 Exit 93 Interchange

- Currently in STIP for scoping
- Flyover is structurally deficient
- Other bridges are functionally obsolete
- Connecting highways are prone to flooding
- Needs to be reconstructed
- Private funds of approximately \$45,000 contributed for preliminary engineering to MoDOT in 2002



Bloomfield Road Overpass

- Connects a major retail area on west side of I-55 with neighborhoods on east side
- Bridge is narrow and not seismically resistant
- Needs to be replaced



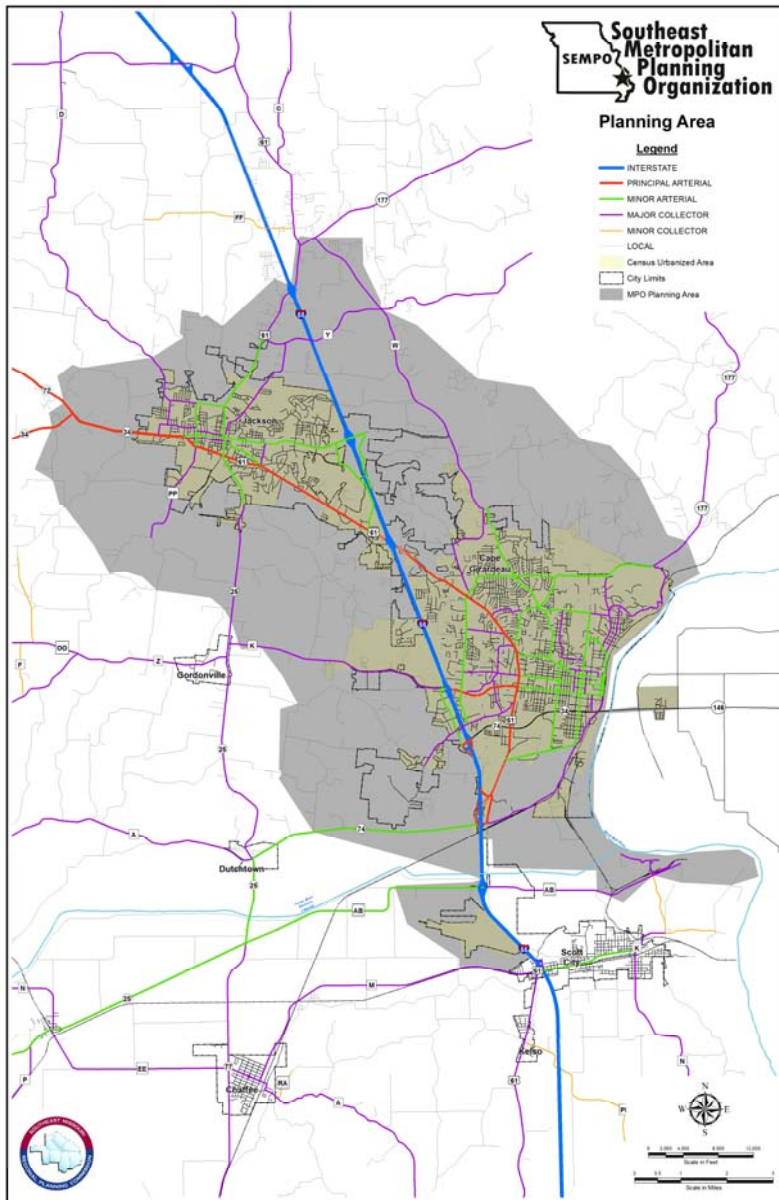
US-61 from MO-34/72 to I-55 Exit 105

- Major north/south route through Jackson
- Serves downtown and numerous businesses, neighborhoods, parks, schools, etc.
- Needs bridge replacement, additional lanes, resurfacing, access improvements, lighting, and bike/ped facilities



MO-25 from MO-34/72 to Route K

- Connects Jackson to Gordonville and other communities
- Safety issues
- Needs bridge replacement, full shoulders, access and intersection improvements, lighting, and bike/ped facilities



I-55 Additional Lanes

- Major artery through SE District
- Heavy freight traffic
- Serves Cape Girardeau Regional Airport and SEMO Port
- Regional impact well beyond SEMPO boundary
- Needs an additional lane in each direction to handle increasing traffic volume

SEMO Port Loop Tracks Terminal

- Will provide the capability for efficient multimodal transfer of multiple products between unit trains and river barges



Cape Girardeau County Transit Authority

- Need daily extended route to locations within Cape Girardeau County
- Fleet replacement and operations



Cape Girardeau Regional Airport - Maintenance Storage/Aircraft Rescue and Firefighting (ARFF) Facility

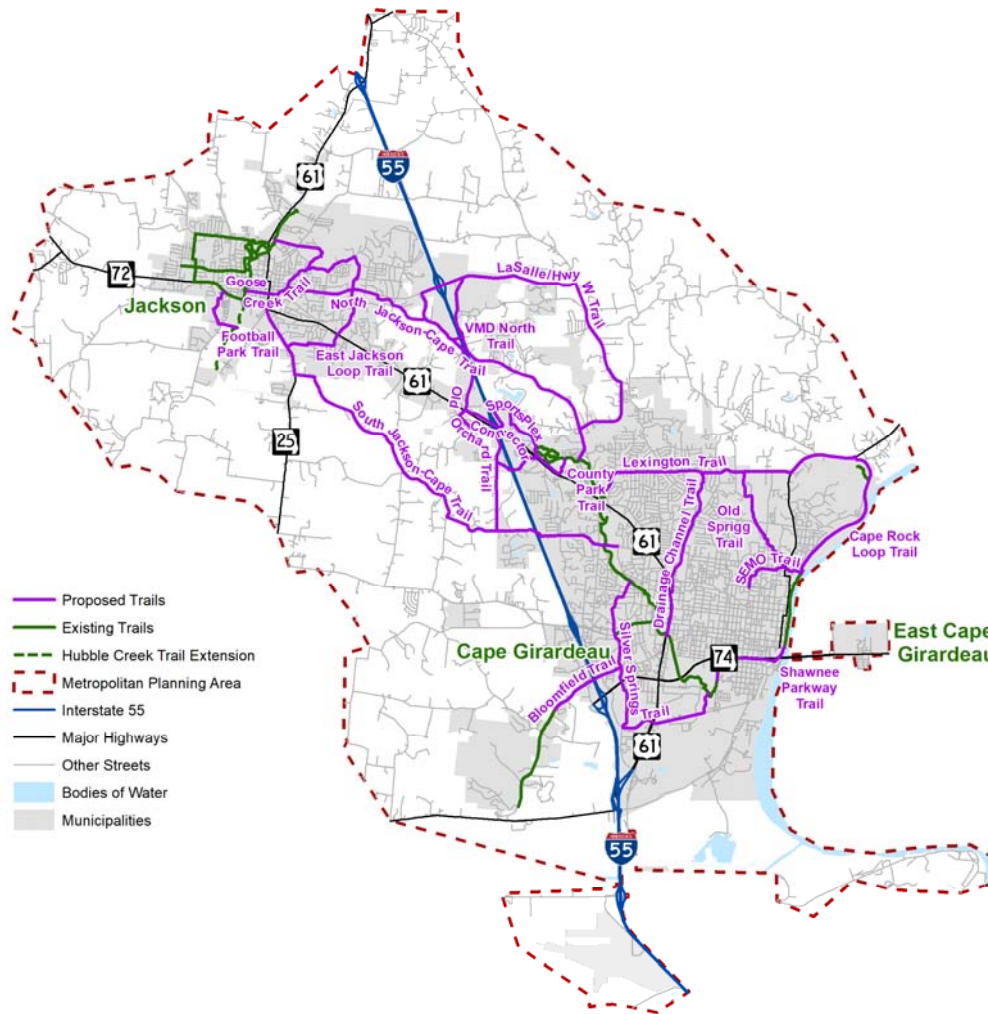
- Provides protection of maintenance equipment and provides a facility for future onfield ARFF equipment and personnel



Source: Esri, DigitalGlobe, GeoEye, AeroGRID, IGN, and the GIS User Community

North Jackson-Cape Trail & SEMO Trail

- Two of several new trails recommended in the SEMPO Regional Bicycle & Pedestrian Plan
- North Jackson-Cape Trail would connect the trail system in Jackson to the trail system in Cape Girardeau, the first step in creating a true regional trail system
- SEMO Trail would connect the SEMO campus with housing areas, parks, and the riverfront



Local Comments

- SEMPO encourages MoDOT to involve the planning partners early in the process before key decisions are made, particularly for major projects
- SEMPO continues to stress the importance of regional transportation planning as it relates to economic development, quality of life, social equity, public health, and ecological sustainability