



City of Weldon Spring  
*City of Tradition and Progress*

5401 Independence Road  
Weldon Spring, MO 63304  
Phone: 636-441-2110  
Fax: 636-441-8495

Email: [cityofweldonspring@weldonspring.org](mailto:cityofweldonspring@weldonspring.org)

October 4, 2018

**Re: Independence Road Reconstruction Phase 4**

**CONTRACT ADDENDUM #1**

**TO ALL BIDDERS:**

**You are hereby notified of the following changes to the above referenced Contract Documents and Specifications for Independence Road Reconstruction Phase 4.**

- 1) A revised BID FORM is part of this addendum and the revised BID FORM should be used for the bid submittal.
- 2) Bid Item 401-5 shall be (BP-1) Bit. Pavement Mixture PG64-22 as shown on the Bid Form. The typical sections showing PG70-22 and should instead indicate Bit. Pavement Mixture is PG64-22.
- 3) The typical sections should note a Prime Coat for the trail aggregate prior to the asphalt placement instead of a Tack Coat as shown. The project Prime Coat application rate is a minimum of 0.2 gallons per square yard and a maximum of 0.5 gallons per square yard. The project Tack Coat application rate target is 0.05 to 0.06 gallon per square yard with a minimum rate of 0.02 gallons per square yard and a maximum rate of 0.10 gallons per square yard.
- 4) The pay item units for all of the asphalt shall be by the square yard as shown on the Bid Form.
- 5) The aggregate base for all pavements including the trail has been revised to 8 inches of Type 5 Aggregate.
- 6) General Note 2 on Plan Sheet 2 indicates all storm sewers shall be reinforced concrete pipe, class III minimum; however JSP - J29 Culvert Pipe allows an alternate of dual wall and triple wall polypropylene for most of the project storm sewers for the storm sewers shown on the profiles as Pipe. The storm sewers from FE-105 to OS-107 shall be reinforced concrete pipe, class III minimum.
- 7) A detail for outfall structure OS-107 is attached with a bid item for the outfall structure added to the BID FORM.

- 8) A detail of the OS-107A trash rack is attached and a bid item is added to the BID FORM for the 6 inch pipe, the concrete pad, and the trash rack.
- 9) A bid item was added for permanent seeding as determined necessary by the City in locations that are not residential lots.
- 10) There will not be a bid item for temporary pavement as the existing road will be used during the initial phase of the traffic plan.
- 11) The bike lane symbols will be spaced along the 4 foot wide bike lanes on each side of the road and stationing for the symbol locations will be provided to the contractor to determine the locations. The left turn arrows symbols will be placed in the left turn lane for Camelot Drive and the City Hall entrance.
- 12) The City Hall/City Park property west of the main entrance between Stations 2001+00 and 2002+00 can be used for staging by the contractor. The contractor shall not use or enter onto the City Hall/City Park entrance pavement or the parking area pavement.
- 13) General Note 11 on Plan Sheet 2 indicates all retaining walls for this project shall be natural boulder material is not correct. All retaining walls shall be bid as modular block retaining wall in bid Item 720-1 and an alternate bid for boulder retaining wall upgrade cost in bid Item JSP-J28.
- 14) Bid Item 604-3 for Grate Inlet with Side Intake is for Structures GI-102 and GI-103.
- 15) Item JSP-J12 has been added to the BID FORM for BORROW AND WASTE.
- 16) Item 310-2 has been added to the BID FORM for 4 INCHES OF TWO INCH RIVER GRAVEL OVER GEOFABRIC.
- 17) Item 203-4 has been added to the BID FORM for mixing Code L drying agent with the soil to lower the moisture to allow for proper compaction.
- 18) Item 203-5 has been added to the BID FORM for the Mirifi HP570 to be used for the temporary geotextile wall. The square yardage price shall include the material, all labor necessary to place the fabric, and all labor to overlay the fabric after placement of compacting embankment fill.
- 19) The project shall follow the current edition of the Missouri Standard Plans and Specifications for Highway Construction per the 2018 edition.
- 20) The unclassified excavation quantity on the Bid Form has been revised to 2,419 cubic yards and the compacting embankment increased to 17,633 as per the quantity shown for Section 2002+83.39 on Sheet 14.
- 21) The three inch rolled curb shown at Station 2002+41.6 shall be incidental to the 40 feet of concrete approach. A bid item has been added to the Bid Form to extend the three inch rolled curb 25 feet to match into the concrete V flume, Two Foot Wide Concrete Rolled Curb and Gutter.
- 22) The contractor shall be required to submit the retaining wall global stability calculations and structural wall designs for shop drawing review and approval.

- 23) A yield line pavement marking has been added to the BID FORM, Item 620-6.
- 24) A bid item has been added to the BID FORM for 4" Bit Pavement Mixture PG64-22 Trench Patching (Base), Item 401-2.
- 25) The gravel road or drive entrances shall be paved with a concrete approach to Station 40+00 on the road or driveway profiles.
- 26) A bid item was added to the BID FORM for 8" of Type 5 Aggregate for asphalt pavement. The 8" of Type 5 aggregate shall be placed and compacted for the main line road, the trail, and the driveways. The 4" Type 5 Aggregate quantity has been reduced appropriately, Item 304-2.

This addendum must be acknowledged by submittal of the Contract Addendum form on page 11. Please feel free to contact us with questions.

Sincerely,

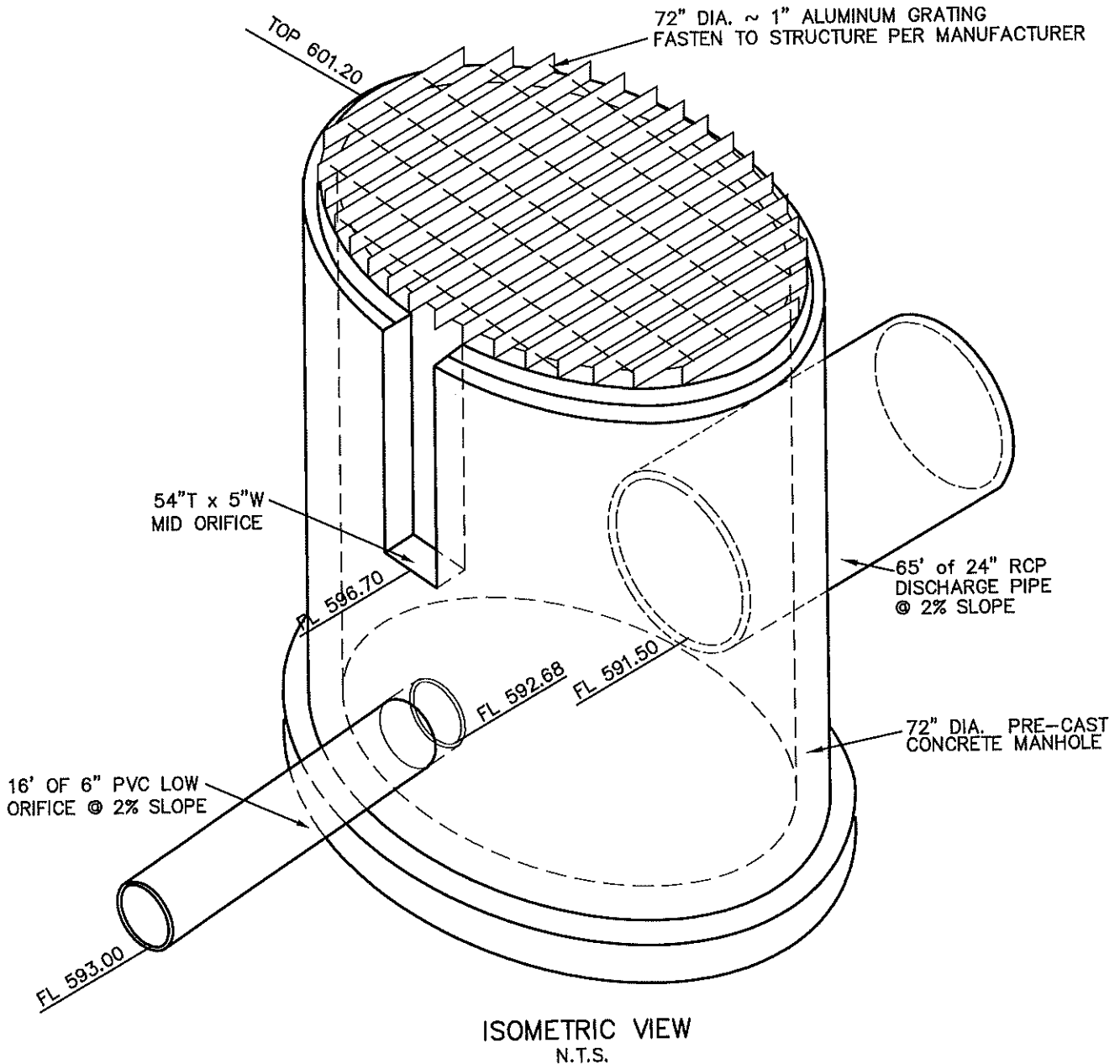


Michael N. Meiners, P.E  
City Engineer of Weldon Spring

Attachments

# INDEPENDENCE ROAD PHASE 4 STP-7302 (659)

ADDENDUM 1  
EXHIBIT A - OS 107



SCALE

N.T.S.



REVISED -

SHEET 1 OF 1



ST. CHARLES ENGINEERING & SURVEYING

801 S. FIFTH STREET, SUITE 202

ST. CHARLES, MO 63301

TEL:(814) 947-0607 FAX:(814) 947-2448

ORDER NO.  
180081

DATE  
10/01/2018

Bidder Name: \_\_\_\_\_

**ITEMIZED BID:** The bidder should complete the following section in accordance with Sec 102.7. The bidder proposes to furnish all labor, materials, equipment, services, etc. required for the performance and completion of the work, as follows:

INDEPENDENCE ROAD RECONSTRUCTION PHASE 4 BID FORM					
ROADWAY ITEMS					
ITEM #	ITEM	UNIT	QUANTITY	UNIT PRICE(\$)	EXTENSION(\$)
201-1	CLEARING AND GRUBBING	LS	1		
202-1	REMOVAL OF IMPROVEMENTS	LS	1		
202-2	FULL DEPTH SAWCUT	LF	840		
203-1	UNCLASSIFIED EXCAVATION	CY	2,419		
203-2	COMPACTING EMBANKMENT	CY	17,633		
203-3	COMPACTING IN CUT	STA	400		
JSP-J25	UNSUITABLE MATERIAL REMOVAL	CY	2,550		
304-1	TYPE 5 AGGREGATE FOR BASE, 4 IN.	SY	1,650		
304-2	TYPE 5 AGGREGATE FOR BASE, 8 IN.	SY	10,050		
310-1	GRAVEL (A) OR CRUSHED LIMESTONE (B)	TONS	188		
JSP – J41	2" MILL OF EXISTING PAVEMENT	SY	35		
401-1	2" BIT. PAVEMENT MIXTURE PG64-22 (BP-1)	SY	88		
401-2	4" BIT. PAVEMENT MIXTURE PG64-22 (BASE)	SY	88		
401-3	2" BIT. PAVEMENT MIXTURE PG70-22 (BP-3)	SY	8,173		
401-4	7.5" BIT. PAVEMENT MIXTURE PG64-22 (BASE)	SY	8,138		
502-1	CONCRETE PAVEMENT (6 IN. NON-REINF.)	SY	1,299		
604-2	CURB INLET	EA	1		
604-3	GRATE INLET WITH SIDE INTAKE	EA	2		
604-4	GRATE INLETS	EA	22		
604-5	AREA INLET	EA	2		
604-6	DOUBLE AREA INLETS	EA	1		
604-7	DOME INLETS	EA	4		
604-8	PRECAST CONCRETE MANHOLE	EA	3		
609-1	VERTICAL CURB AND GUTTER (2.5')	LF	4,386		

609-2	FURNISH AND INSTALL ROCK LINING	CY	120		
618-1	MOBILIZATION	LS	1		
627-1	CONTRACTOR FURNISHED SURVEYING AND STAKING	LS	1		
627-2	SETTING PROPERTY CORNERS ALONG EXISTING AND PROJECT ESTABLISHED RIGHT OF WAY BY MISSOURI PLS	EA	21		
627-3	AS-BUILT DRAWINGS	LS	1		
720-1	MODULAR BLOCK RETAINING WALL	SF	3,988		
JSP-J29	12 IN. PIPE (UNIT COST SHALL INCLUDE BEDDING & GRANULAR BACKFILL)	LF	1,796.26		
JSP-J29	15 IN. PIPE (UNIT COST SHALL INCLUDE BEDDING & GRANULAR BACKFILL)	LF	112.17		
JSP-J29	18 IN. PIPE (UNIT COST SHALL INCLUDE BEDDING & GRANULAR BACKFILL)	LF	239.75		
JSP-J29	24 IN. PIPE (UNIT COST SHALL INCLUDE BEDDING & GRANULAR BACKFILL)	LF	313.71		
JSP-J29	30 IN. PIPE (UNIT COST SHALL INCLUDE BEDDING & GRANULAR BACKFILL)	LF	12		
724-6	24 IN. CLASS III REINFORCED CONCRETE PIPE (UNIT COST SHALL INCLUDE BEDDING & GRANULAR BACKFILL)	LF	72.1		
724-7	30 IN. CLASS III REINFORCED CONCRETE PIPE (UNIT COST SHALL INCLUDE BEDDING & GRANULAR BACKFILL)	LF	115.63		
732.2	15 IN. PRECAST CONCRETE FLARED END (WITH TOEWALL)	LF	1		
732.3	24 IN. PRECAST CONCRETE FLARED END (WITH TOEWALL)	EA	1		
803-1	30 IN. PRECAST CONCRETE FLARED END (WITH TOEWALL)	EA	2		
JSP-J24	SPRINKLER SYSTEM RESTORATION	LS	1		
806-1	TURF TYPE TALL FESCUE SODDING	SY	13,214		
806-2	SILT FENCE	LF	5,098		
806-3	INLET CHECK	EA	35		
JSP-J26	REMOVE AND REPLACE EXISTING MAILBOXES, MONUMENTS, AND SIGNS	LS	1		
JSP-J31	ADJUST TO GRADE SANITARY/STORM MANHOLES	EA	3		
JSP-J39	ROCK DITCH CHECK	EA	10		
JSP-J34	TEMPORARY HORSE PADDOCK FENCE	LF	840		
JSP-J33	REMOVE AND RECONSTRUCT EXISTING HORSE PADDOCK FENCE	LF	960		
JSP-J36	RECTANGULAR FLASHING BEACON	EA	2		
JSP-J35	CHANNEL PROTECTION REVETMENT	SY	262		
JSP-J32	REPLACE 8" PVC SANITARY SEWER WITH 8" DUCTILE IRON	LF	40		

JSP-J30	TRAINING HOURS	EA			
JSP-J37	UPROOT BUSHES AND PLACE IN YARD	LS	1		
JSP-J38	TEMPORARY SEEDING	SY	3,500		
JSP-J12	BORROW AND WASTE	CY	15,214		
310-2	4 INCHES OF 2 INCH RIVER GRAVEL OVER GEOFABRIC	SY	5		
203-4	CODE L SOIL DRYING AGENT	SY	1,650		
203-5	MIRAFI HP570 FOR GEOTEXTILE OVERLAP WALL	SY	5,000		
803-1	PERMANENT SEEDING	SY	7,000		
609-3	TWO FOOT WIDE CONCRETE ROLLED CURB AND GUTTER	LF	25		
604-9	OUTFALL STRUCTURE OS-107	LS	1		
604-10	OS-107A, 16 FEET OF 6" PVC, CONCRETE PAD AND TRASH RACK	LS	1		
604-5	4" BIT. PAVEMENT MIXTURE PG64-22 TRENCH PATCHING (BASE)	SY	122		
<b>SUBTOTAL – ROADWAY ITEMS</b>					
<b>BICYCLE/PEDESTRIAN ITEMS</b>					
304-2	TYPE 5 AGGREGATE FOR BASE, 8 IN (TRAIL)	SY	2,526		
401-5	4" BIT. PAVEMENT MIXTURE PG64-22 (BP-1)	SY	2,195		
607-1	CHAIN LINK FENCE FOR RETAINING WALL	LF	314		
608-1	CONCRETE CURB RAMP	EA	15		
608-2	TRUNCATED DOMES	SF	121		
608-3	4 ' CONCRETE SIDEWALK	SF	449		
<b>SUBTOTAL – BICYCLE/PEDESTRIAN ITEMS</b>					
<b>TRAFFIC CONTROL ITEMS</b>					
616-1	PROJECT INFORMATION SIGNS	EA	2		
616-2	CONSTRUCTION SIGNS	SF	650		
617-1	TRIM-LINE CHANNELIZE	EA	90		
617-2	TYPE III MOVEABLE BARRICADE W/ LIGHT	EA	4		
617-3	TEMPORARY CONCRETE BARRIER	LF	1,500		
<b>SUBTOTAL – TRAFFIC CONTROL ITEMS</b>					

SIGNING/STRIPING ITEMS				
620-1	4 IN. WHITE ACRYLIC WATERBORNE TYPE L BEADS PAINT	LF	4400	
620-2	4 IN. YELLOW ACRYLIC WATERBORNE TYPE L BEADS PAINT	LF	5600	
620-3	24 IN. YELLOW TYPE 1 PREFORMED PAVEMENT MARKING TAPE	LF	50	
621-1	12 IN, WHITE TYPE 1 PREFORMED PAVEMENT MARKING TAPE	LF	50	
621-2	24 IN, WHITE TYPE 1 PREFORMED MARKING TAPE	LF	25	
620-4	LT & RT ARROWS TYPE 1 PREFORMED MARKING TAPE	EA	6	
620-5	BIKE LANE SYMBOL TYPE 1 PREFORMED MARKING TAPE	EA	10	
620-6	YEILD LINE MARKING	LF	40	
903-1	PERMANENT SIGNS	SF	75	
<b>SUBTOTAL – SIGNING/STRIPING ITEMS</b>				
<b>INDEPENDENCE ROAD RECONSTRUCTION PHASE 4 TOTAL</b>				

**Total Bid (BASE BID) (Numbers):**

---

**Total Bid (BASE BID) (Written):**

---

**Alternate A**

Alternate A bid will include the base bid total plus the additional cost for bid item 607-30.25 the 4' high safety fence chain link in the base bid to bid for 883 linear feet of 4' high black painted metal safety fence.

INDEPENDENCE ROAD RECONSTRUCTION PHASE 4 TOTAL				
JSP-J27	4' HIGH BLACK PAINTED METAL SAFETY FENCE, UPGRADE COST	LF	314	
<b>BASE BID + ALTERNATE A TOTAL</b>				

**Total Alternate A (Base Bid + Alternate A Bid) (Numbers)**

---

**Total Alternate A (Base Bid + Alternate A Bid) (Written)**

---



**Alternate B**

Alternate B bid will include the base bid total plus the additional cost for bid item 607-30.25 the 4' high safety fence chain link in the base bid to bid for 883 linear feet of 4' high black painted metal safety fence and for 110 square feet of modular block retaining wall to be bid as boulder retaining wall.

<b>INDEPENDENCE ROAD RECONSTRUCTION PHASE 4 BASE BID TOTAL</b>					
JSP-J27	4' HIGH BLACK PAINTED METAL SAFETY FENCE FOR RETAINING WALL, UPGRADE COST	LF	314		
JSP-J28	BOULDER RETAINING WALL, UPGRAGE COST	SF	474		
<b>BASE BID + ALTERNATE B TOTAL</b>					

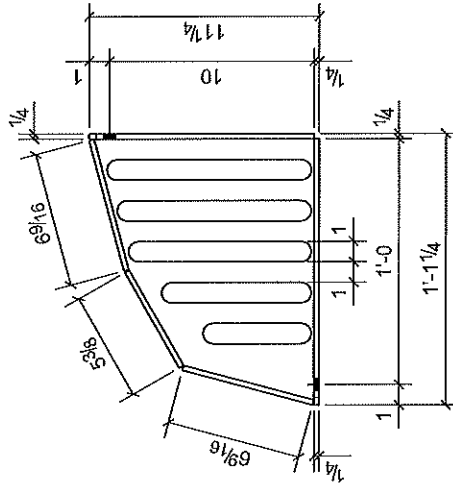
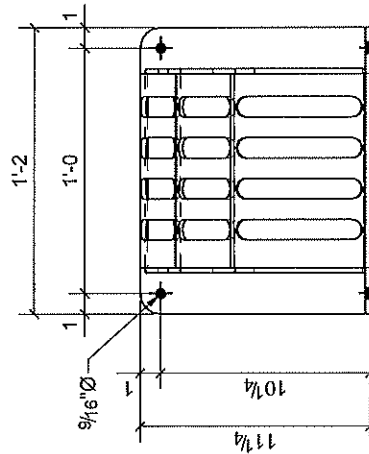
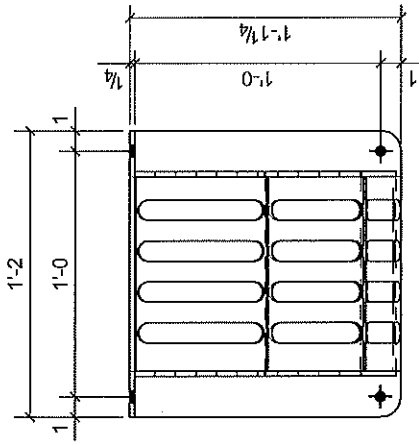
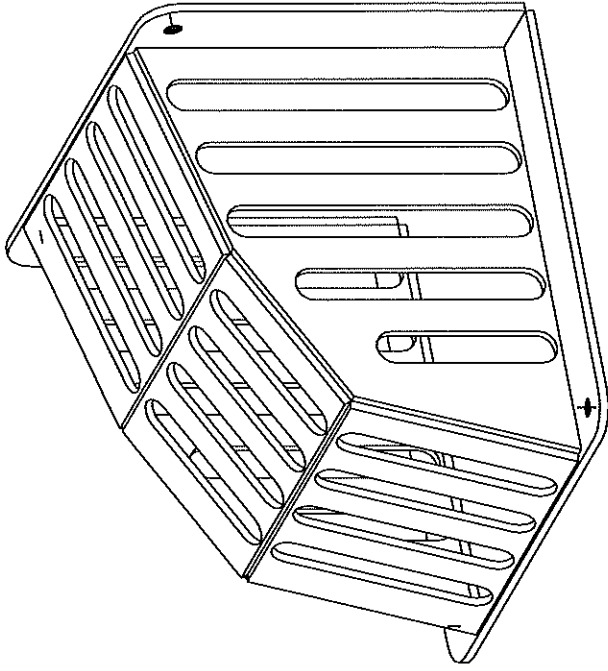
**Total alternate B (Base Bid + Alternate B Bid) (Numbers)**


---

**Total alternate B (Base Bid + Alternate B Bid) (Written)**

---

# Exhibit C

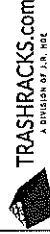


MADE IN THE U.S.A. 

AVAILABLE MATERIALS:  
 MILD STEEL (NO FINISH) - WGT: 24.9 lbs.  
 MILD STEEL (GALVANIZED) - WGT: 24.9 lbs.  
 STAINLESS STEEL - WGT: 24.9 lbs.  
 ALUMINUM - WGT: 8.41 lbs.

CUSTOM SIZES AVAILABLE  
 AVAILABLE UPON REQUEST WITH:

OR EQUAL



101 IRONWOOD ROAD  
 MIDDLESBORO, KY 40665  
 PH: (606) 248-5560  
 FAX: (606) 248-5308  
 JRHEE.COM

TITLE: LPG-10  
 10" PIPE GUARD GRATE

SIZE DWG. NO. A 268511

REV. 0  
 SHEET 1 / 1