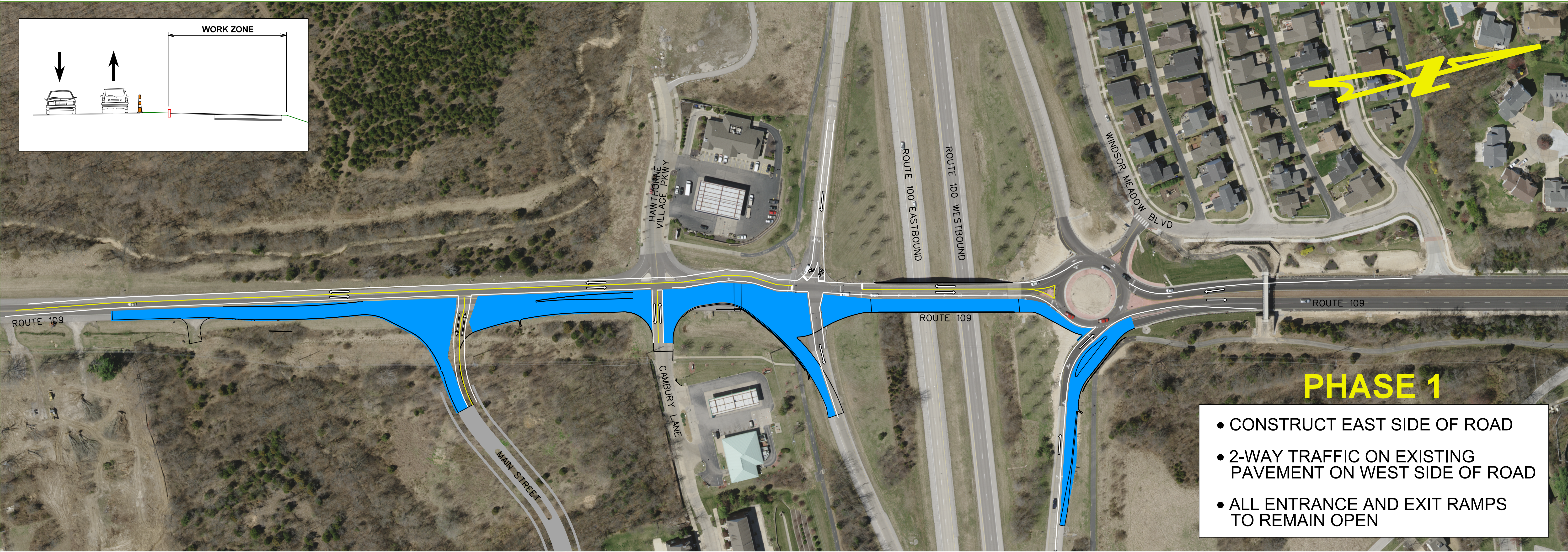
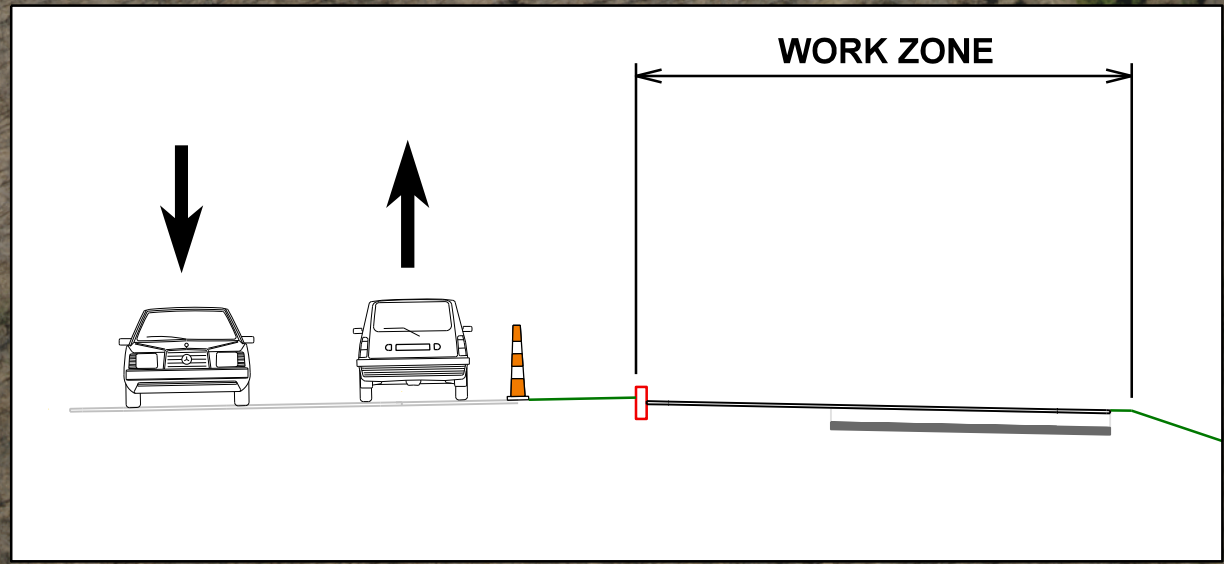


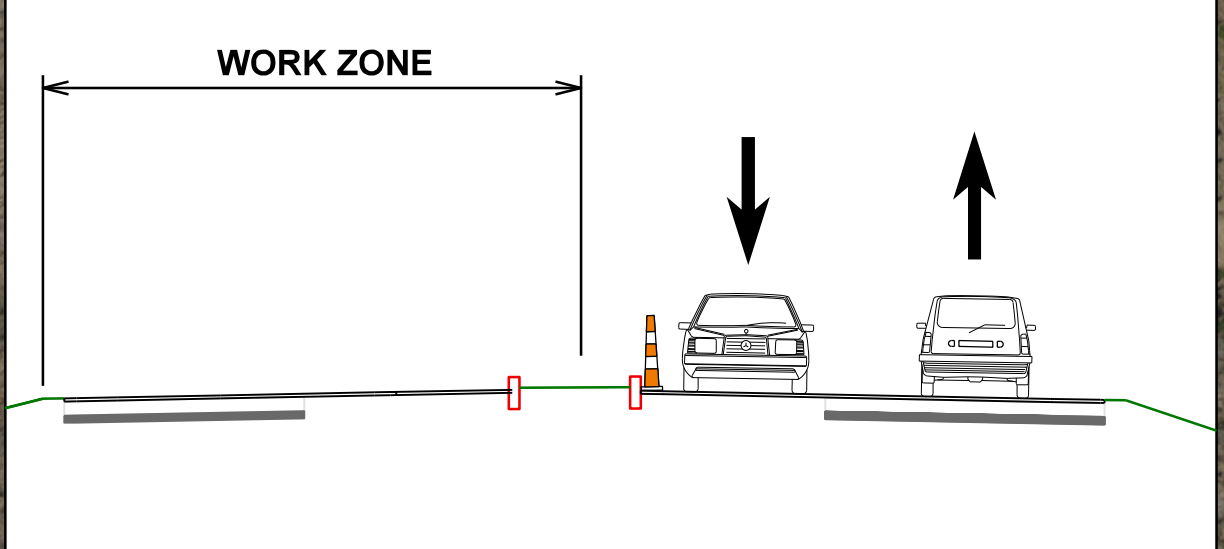
TRAFFIC CONTROL PLAN

J6S3141A,B,C,D ROUTE 109 IMPROVEMENTS



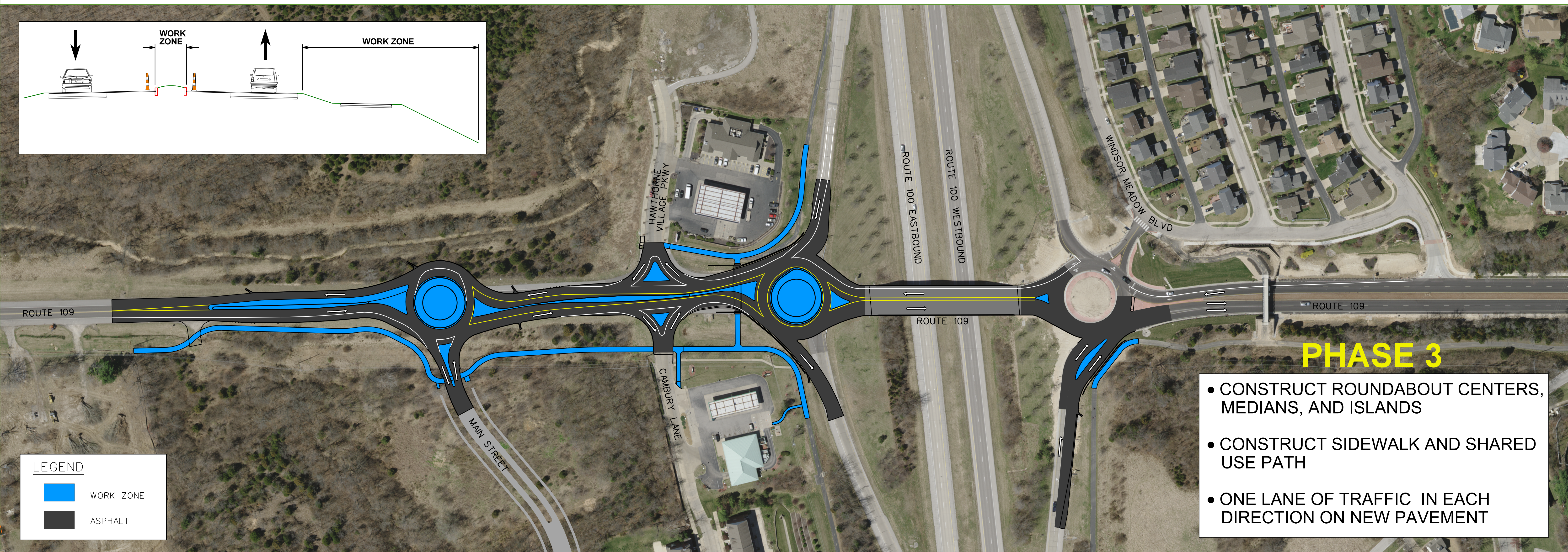
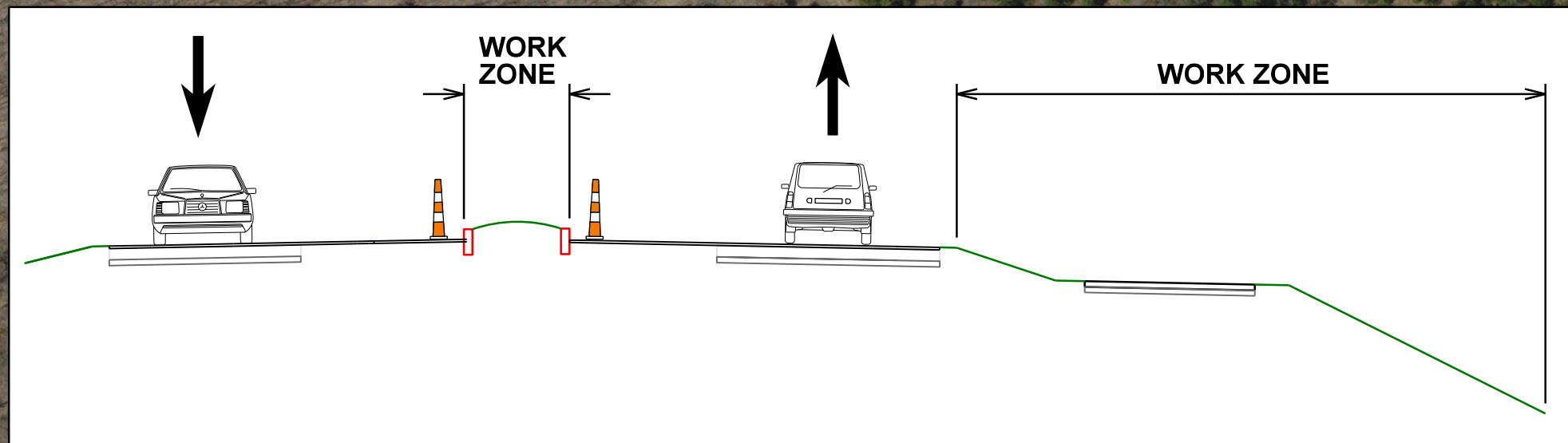
PHASE 1

- CONSTRUCT EAST SIDE OF ROAD
- 2-WAY TRAFFIC ON EXISTING PAVEMENT ON WEST SIDE OF ROAD
- ALL ENTRANCE AND EXIT RAMPS TO REMAIN OPEN



PHASE 2

- CONSTRUCT WEST SIDE OF ROAD
- 2-WAY TRAFFIC ON NEW PAVEMENT ON EAST SIDE OF ROAD
- ALL ENTRANCE AND EXIT RAMPS TO REMAIN OPEN



PHASE 3

- CONSTRUCT ROUNDABOUT CENTERS, MEDIANS, AND ISLANDS
- CONSTRUCT SIDEWALK AND SHARED USE PATH
- ONE LANE OF TRAFFIC IN EACH DIRECTION ON NEW PAVEMENT

LEGEND

