

PROJECT LIMITS

RESURFACING 32.5 MILES
COLDMILL DRIVING LANES - MILL OLD RUMBLE STRIPS
RESURFACE DRIVING LANES - SEAL SHOULDERS

BEGIN PROJECT
ROUTE 60 IN MONETT

SIGHT DISTANCE IMPROVEMENTS/
GUARDRAIL MODIFICATION
SOUTHEAST CORNER OF ROUTE BB

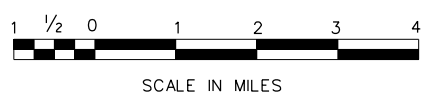
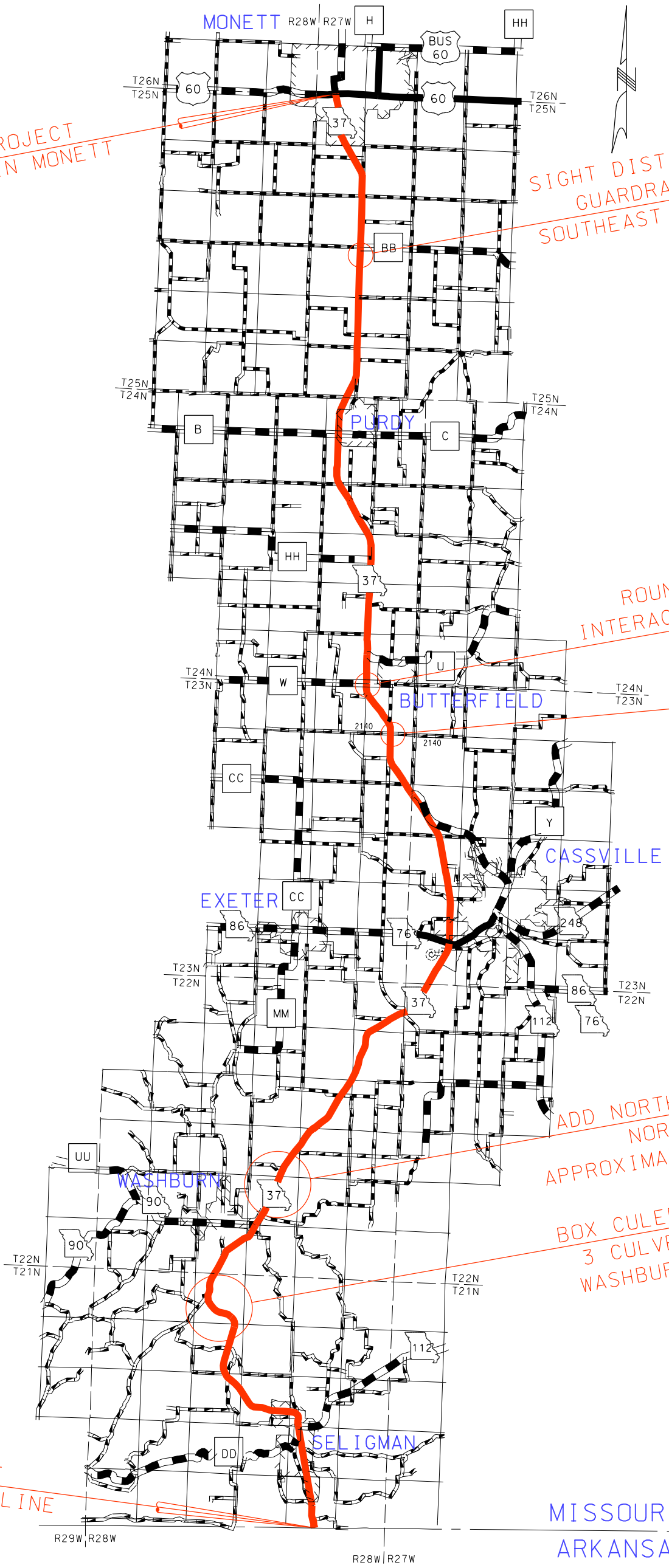
ROUNDBOUT OR
INTERACTIVE FLASHERS
ROUTE W

LEFT TURN LANE
FARM ROAD 2140

ADD NORTHBOUND PASSING LANE
NORTH OF WASHBURN
APPROXIMATELY 1 MILE IN LENGTH

BOX CULVERT EXTENSIONS
3 CULVERTS BETWEEN
WASHBURN & SELIGMAN

END PROJECT
ARKANSAS STATE LINE



MISSOURI
ARKANSAS