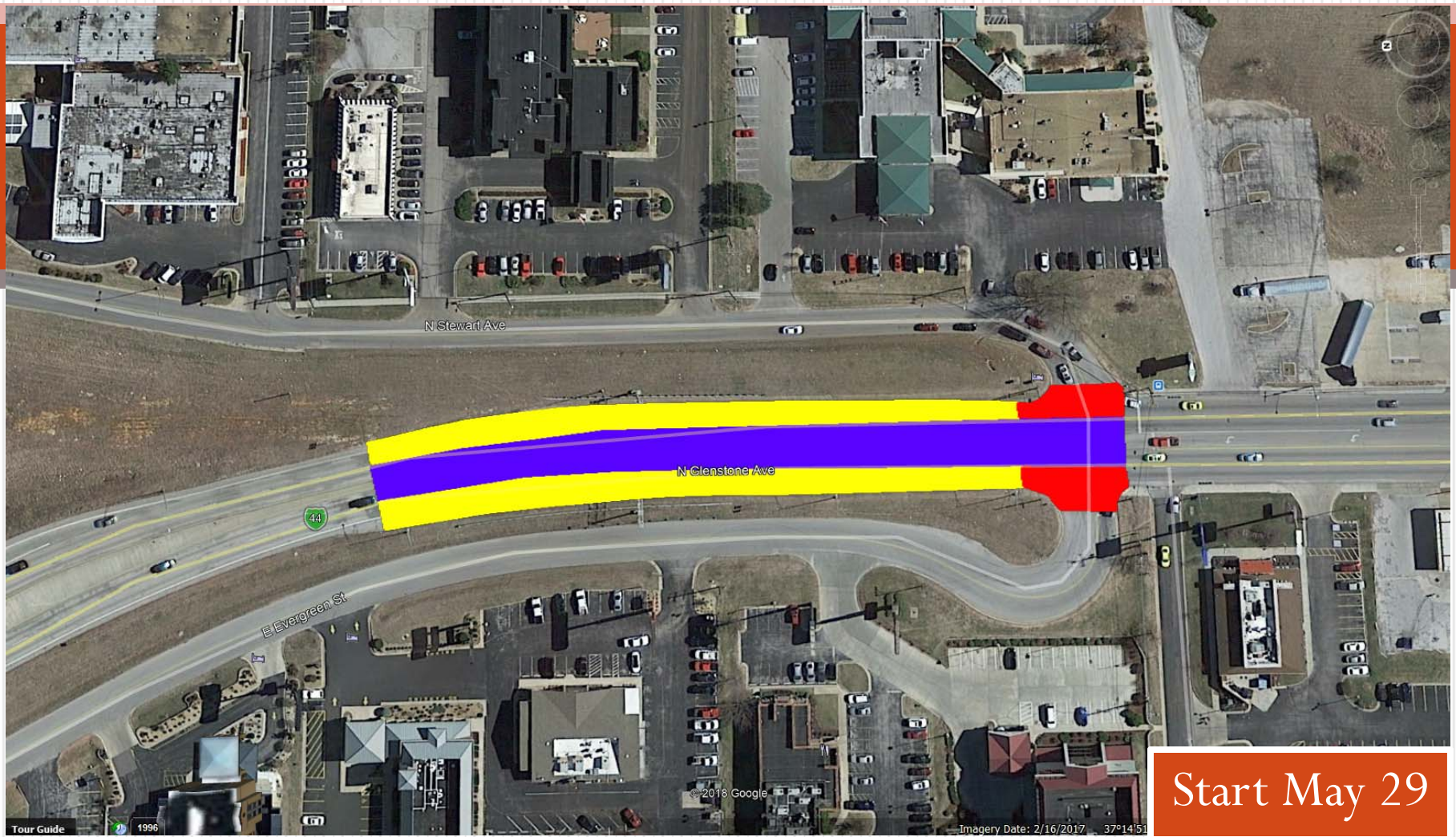


Location 1- Glenstone/Evergreen (28 Days Total)



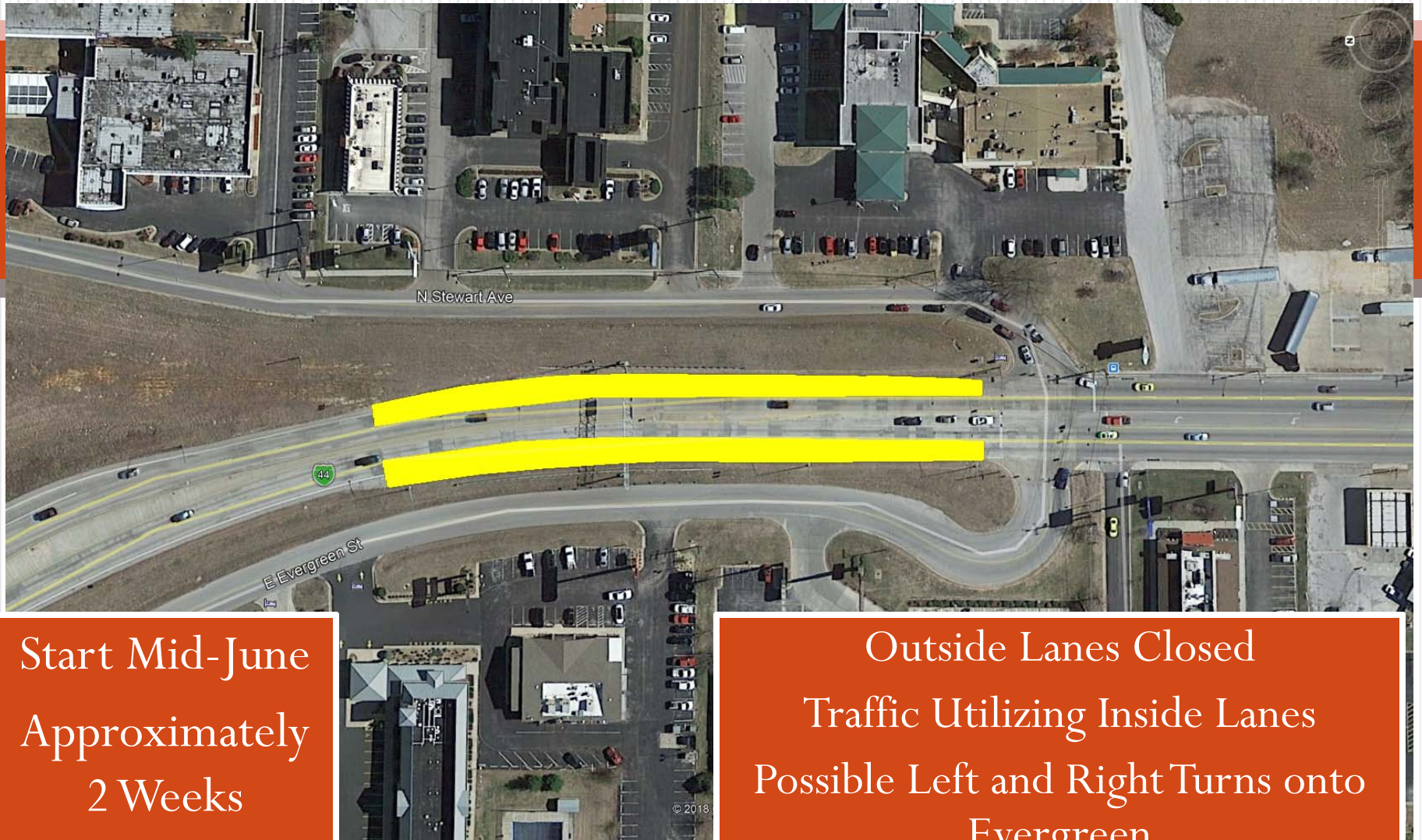
Location 1- Glenstone/Evergreen



Start May 29
Approximately
2 Weeks

Inside Lanes Closed
Traffic Utilizing Outside Lanes
No Left Turns onto Evergreen

Location 1- Glenstone/Evergreen



Start Mid-June
Approximately
2 Weeks

Outside Lanes Closed
Traffic Utilizing Inside Lanes
Possible Left and Right Turns onto
Evergreen

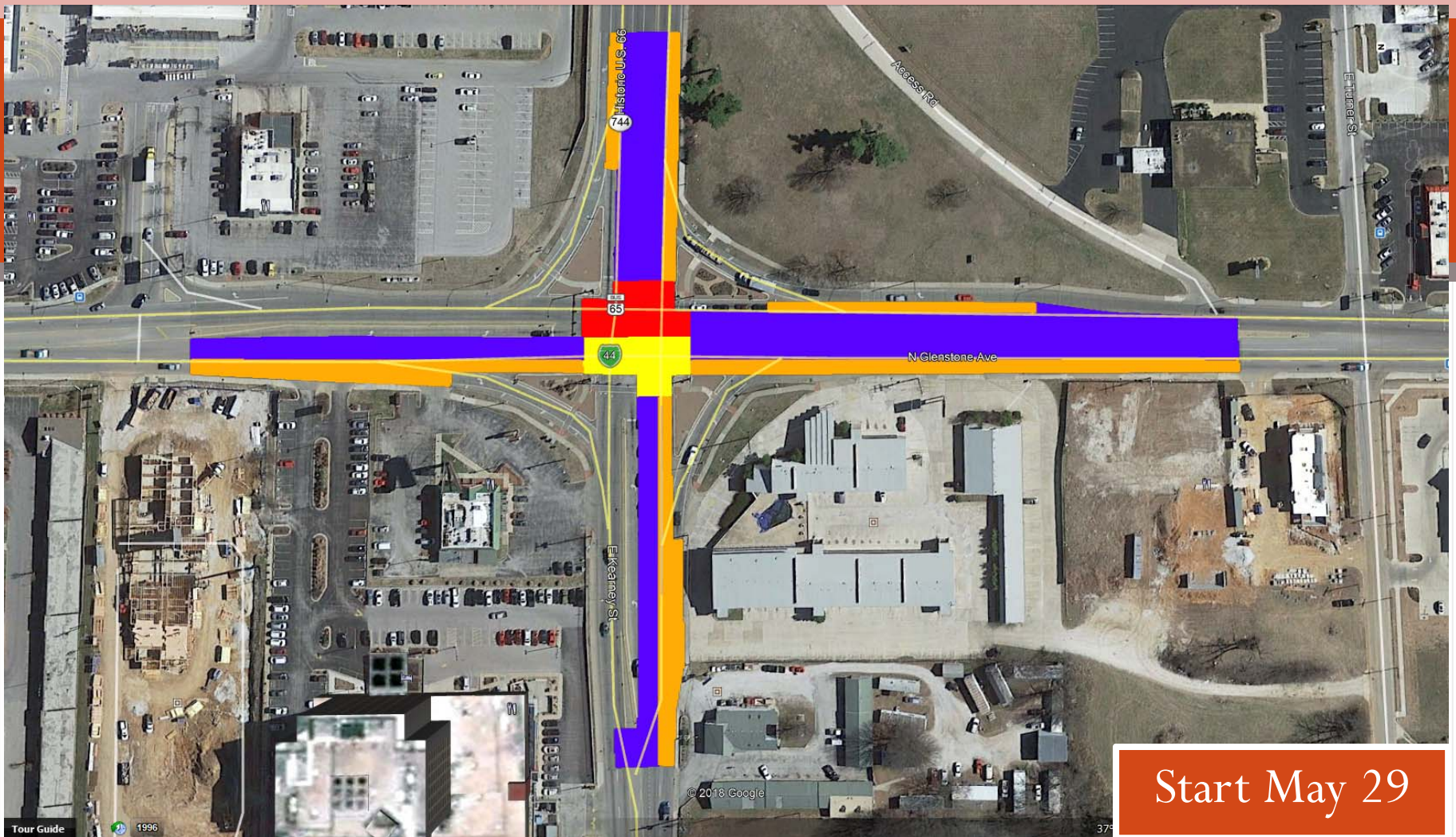
Location 1- Glenstone/Evergreen



Start Mid-June
Approximately Two
12 Hour Nights
7:00 PM to 7:00 AM

Outside Lanes Closed
Evergreen Closed
Traffic Utilizing Inside Lanes

Location 2- Glenstone/Kearney (42 Days Total)



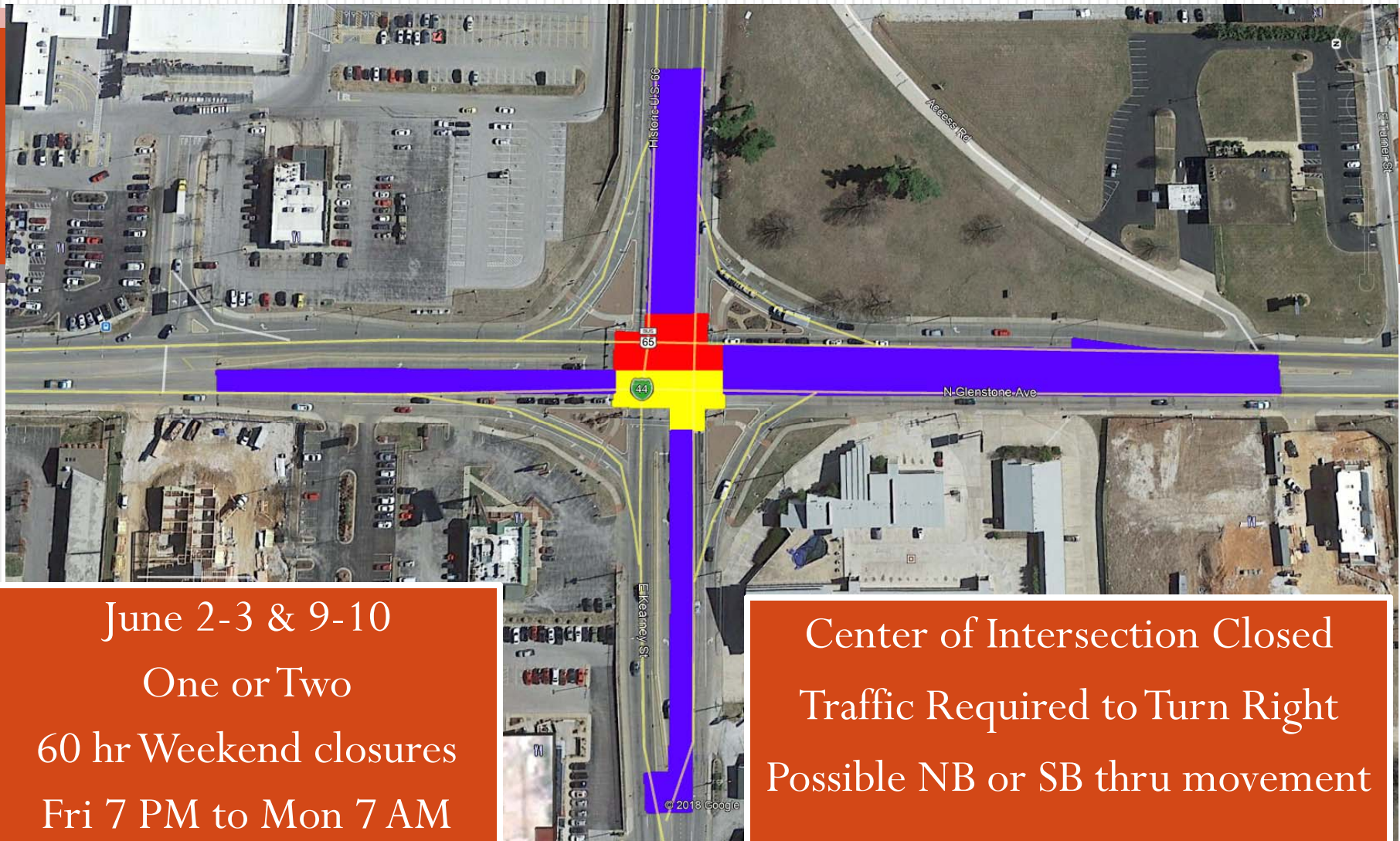
Location 2- Glenstone/Kearney



Start May 29
Approximately
3-4 weeks

Inside Lanes Closed
Traffic Utilizing Outside Lanes
No Left Turns

Location 2- Glenstone/Kearney



June 2-3 & 9-10

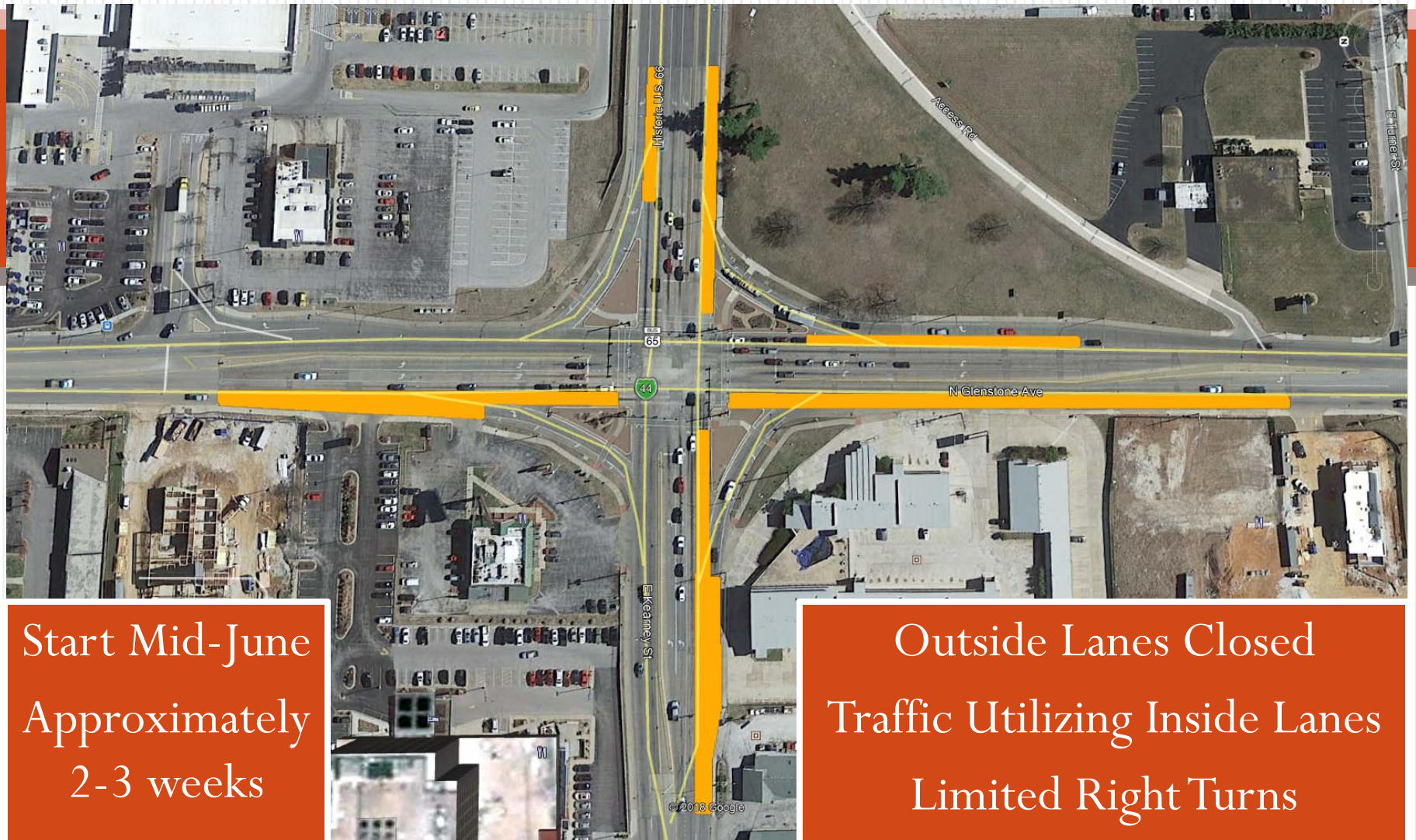
One or Two

60 hr Weekend closures

Fri 7 PM to Mon 7 AM

Center of Intersection Closed
Traffic Required to Turn Right
Possible NB or SB thru movement

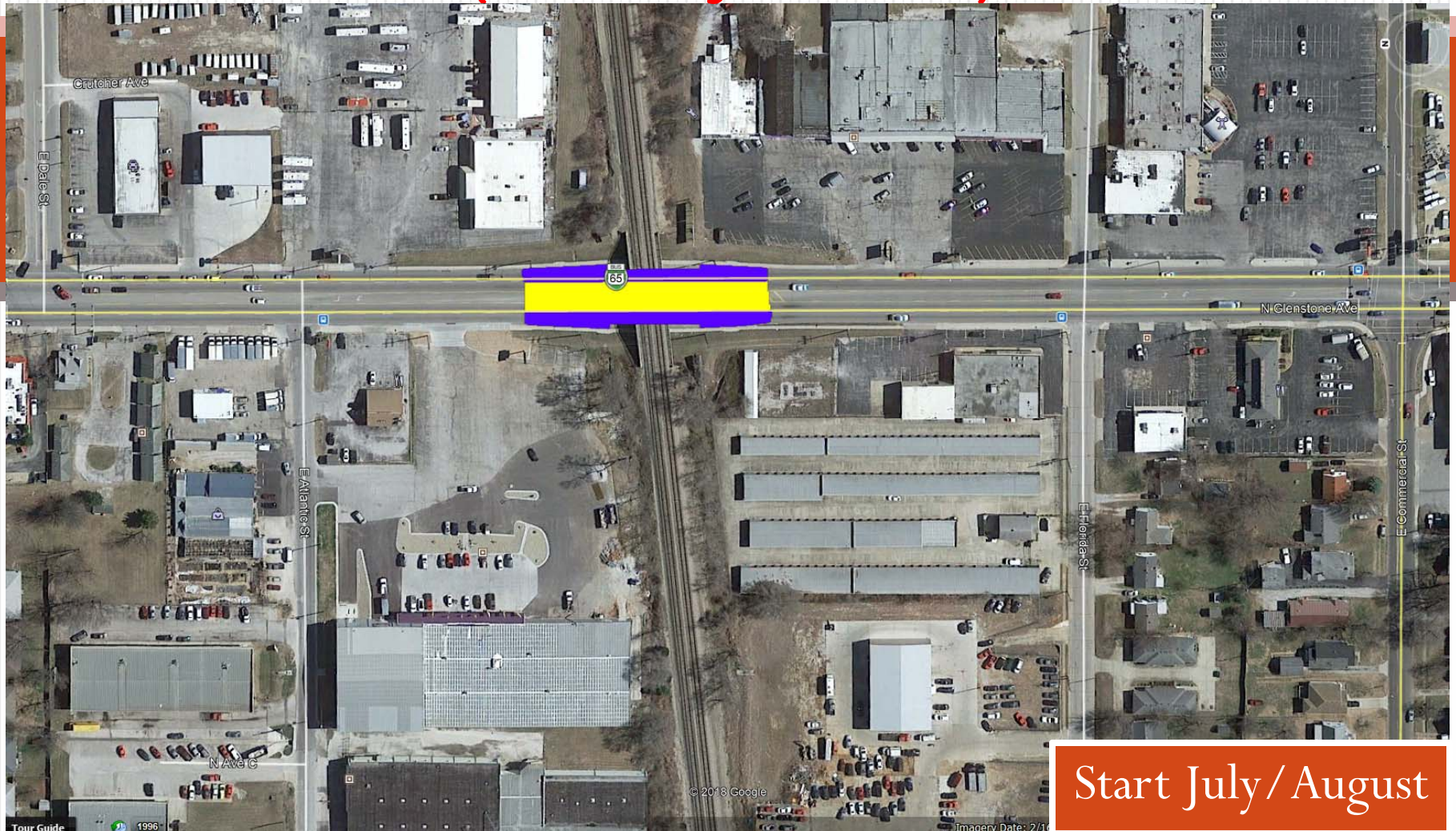
Location 2- Glenstone/Kearney



Start Mid-June
Approximately
2-3 weeks

Outside Lanes Closed
Traffic Utilizing Inside Lanes
Limited Right Turns

Location 3- Glenstone(under RR Tracks) (21 Days Total)



Location 3- Glenstone(under RR Tracks)



Start July/ August
Approximately
1.5 Weeks

Inside Lanes Closed
Traffic Utilizing Outside Lanes

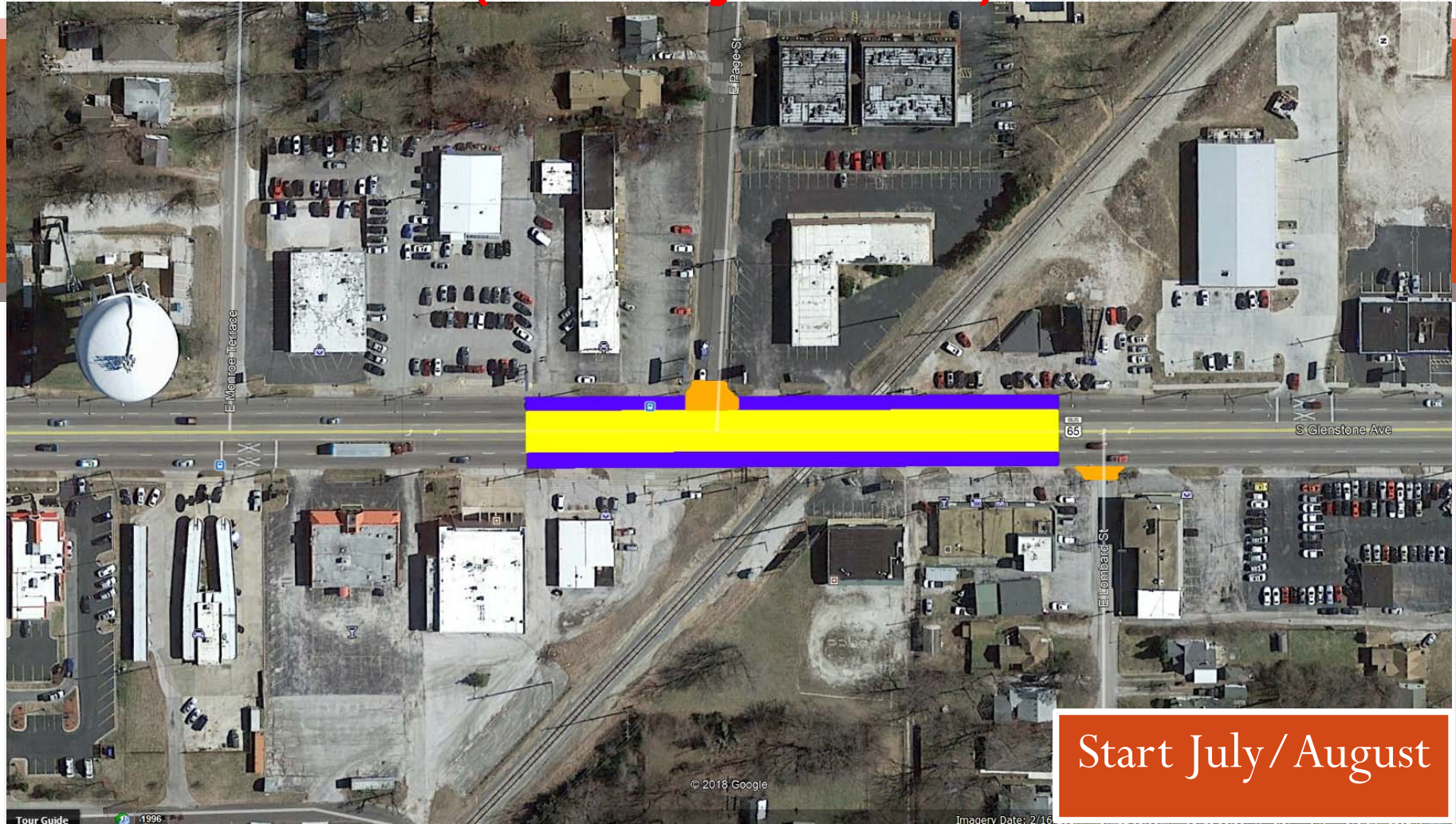
Location 3- Glenstone(under RR Tracks)



Start July/August
Approximately
1.5 Weeks

Outside Lanes Closed
Traffic Utilizing Inside Lanes

Location 4- Glenstone(Page/Lombard) (28 Days Total)



Start July/ August

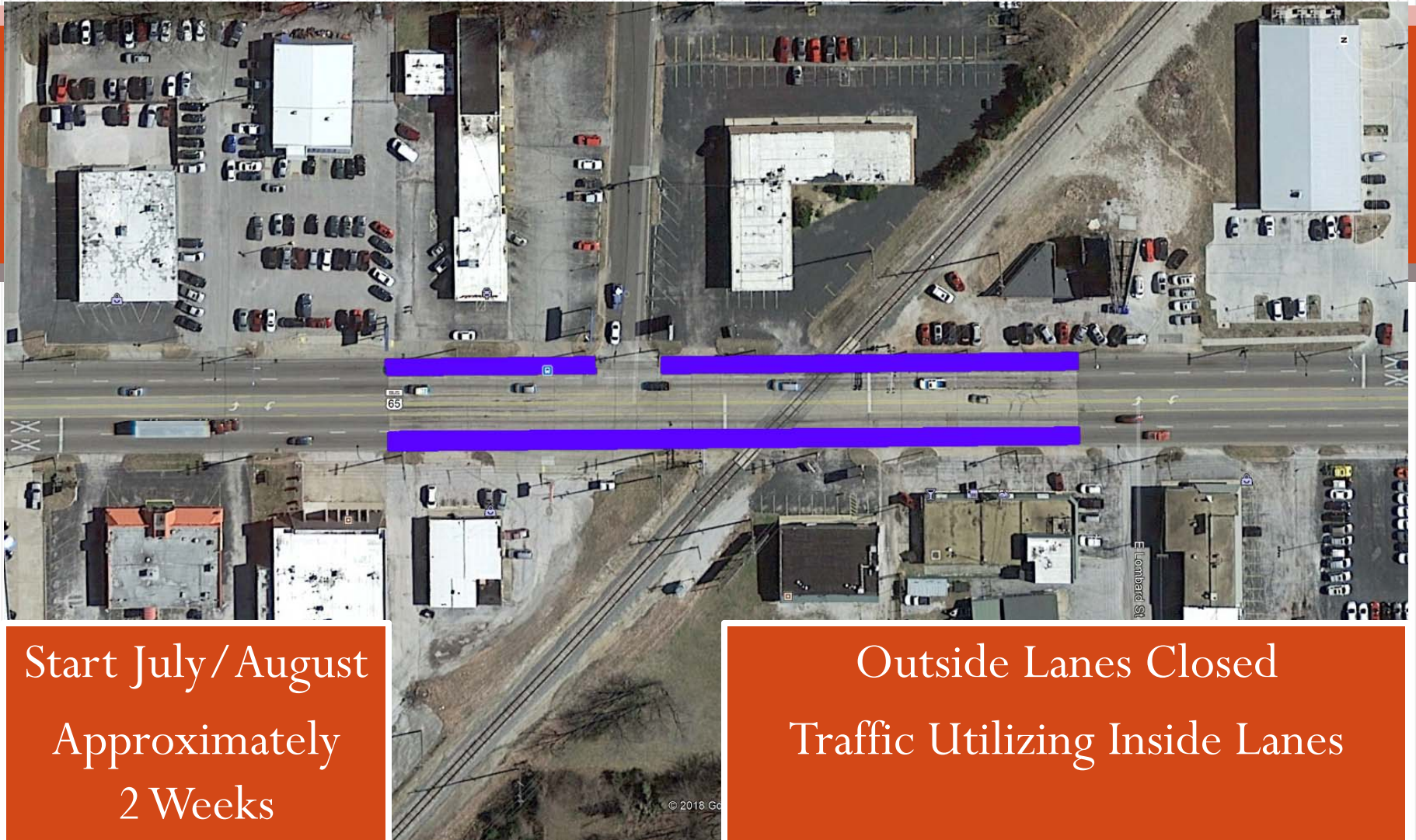
Location 4- Glenstone(Page/Lombard)



Start July/ August
Approximately
2 Weeks

Inside Lanes Closed
Traffic Utilizing Outside Lanes

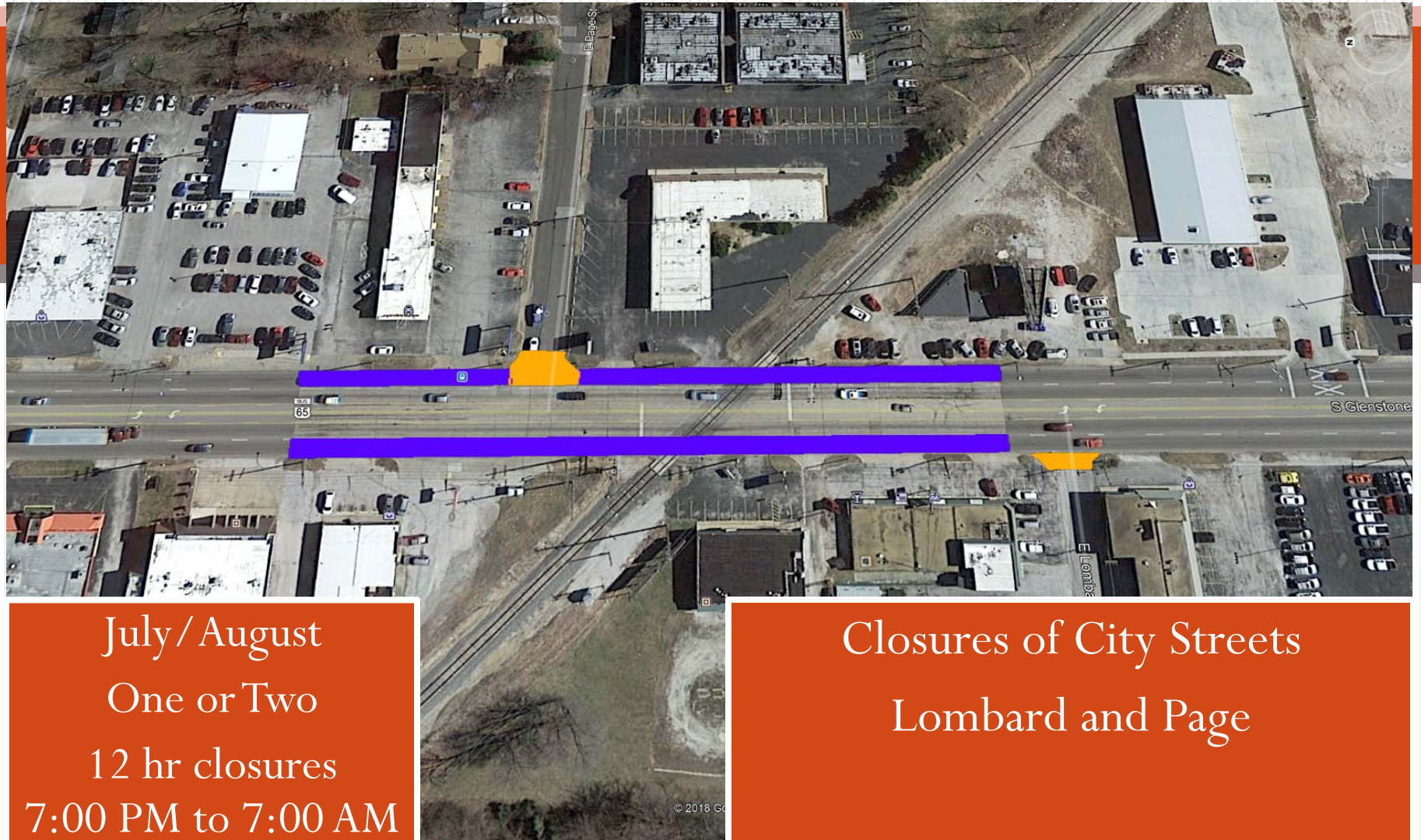
Location 4- Glenstone(Page/Lombard)



Start July/ August
Approximately
2 Weeks

Outside Lanes Closed
Traffic Utilizing Inside Lanes

Location 4- Glenstone(Page/Lombard)



July/August
One or Two
12 hr closures
7:00 PM to 7:00 AM

Closures of City Streets
Lombard and Page