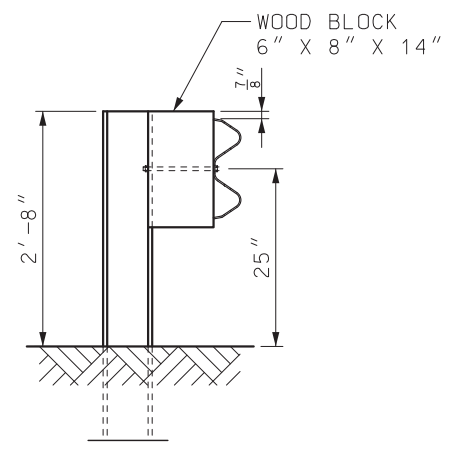
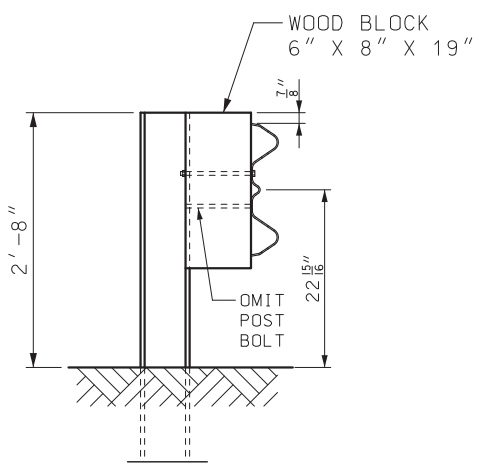
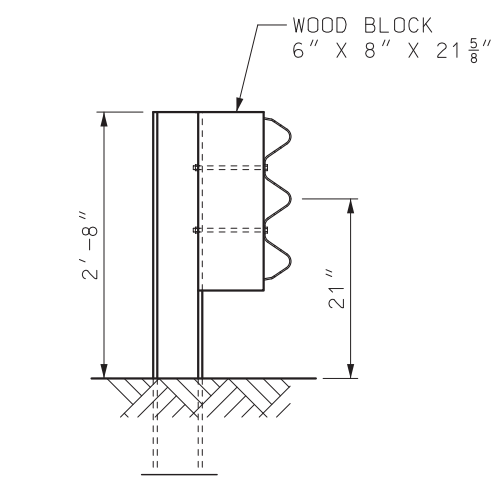


(1) TRANSITION FROM 31" TO 29" HEIGHT OVER NEXT TWO UPSTREAM 12'-6" W-BEAM RAILS.



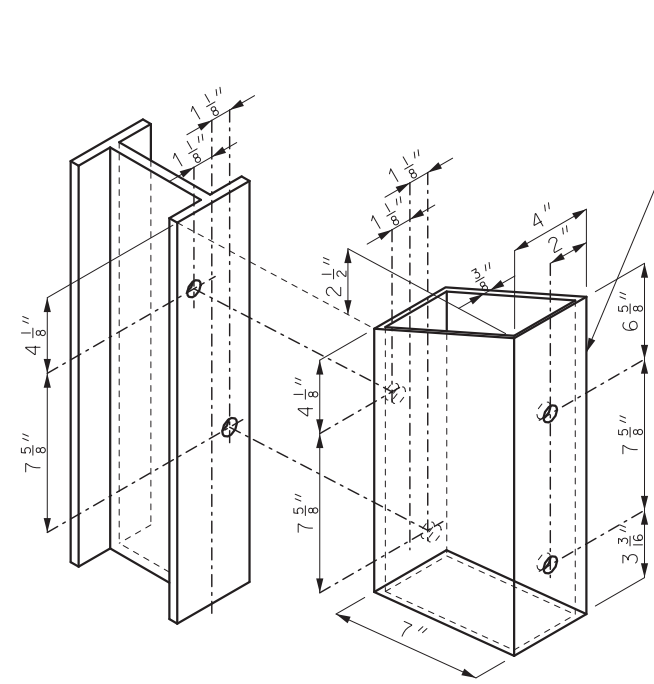
NOTES:
 FOR GENERAL NOTES, SEE SHEET 3.
 FOR DETAILS OF BLOCK ON STEEL POSTS, SEE SHEET 2.

MoDOT MISSOURI HIGHWAYS AND TRANSPORTATION COMMISSION
 105 WEST CAPITOL JEFFERSON CITY, MO 65102
 1-888-ASK-MODOT (1-888-275-6636)

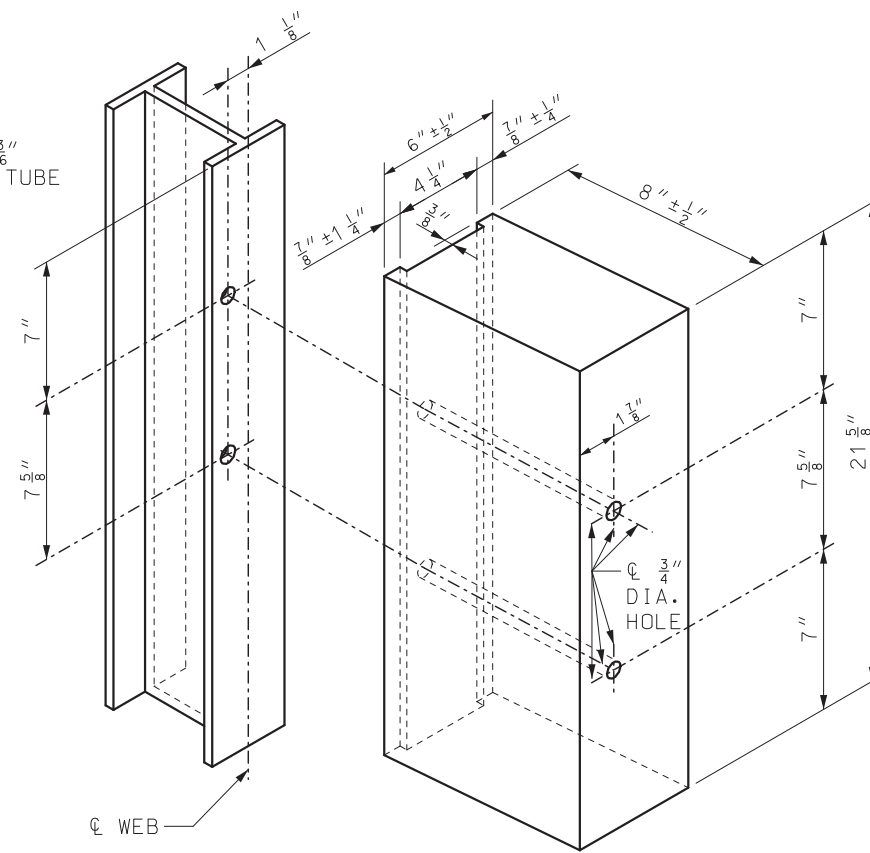
STATE OF MISSOURI
 MARK E. CROARKIN
 NUMBER PE-2002016640
 PROFESSIONAL ENGINEER
 Mark Croarkin
 04/08/2025 3:16:02 PM
 MARK E. CROARKIN - CIVIL
 MO-PE-2002016640

**BRIDGE ANCHOR SECTION
 SAFETY BARRIER CURB ON BRIDGE**

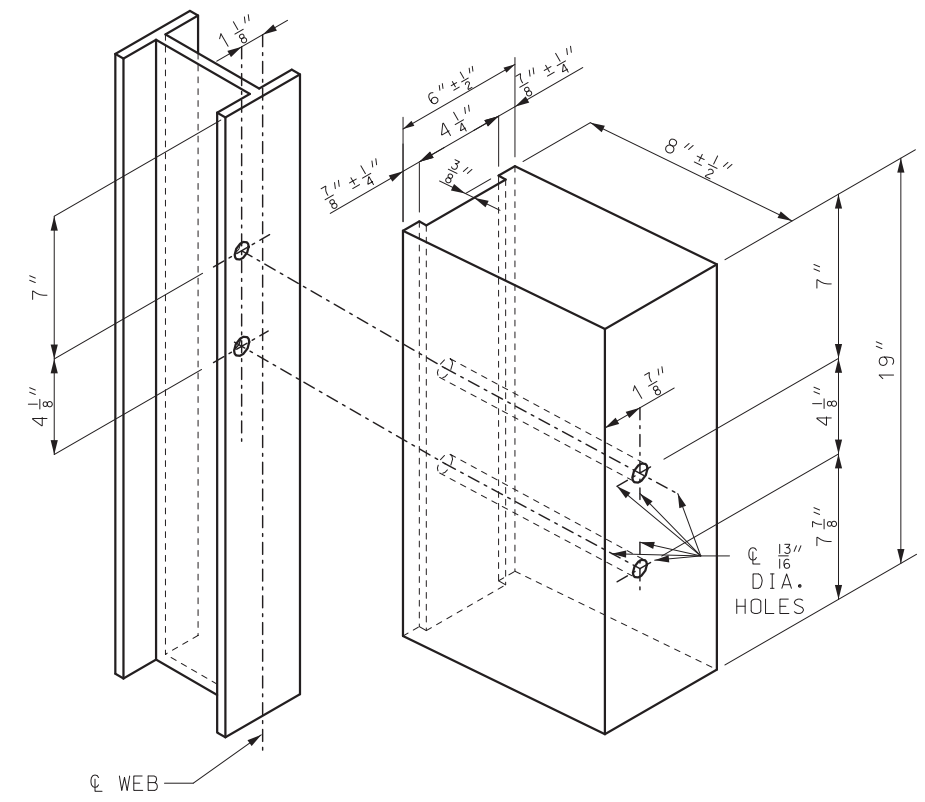
DATE EFFECTIVE: 7/1/2025	606.22V	SHEET NO. 1 OF 6
DATE PREPARED: 3/21/2025		



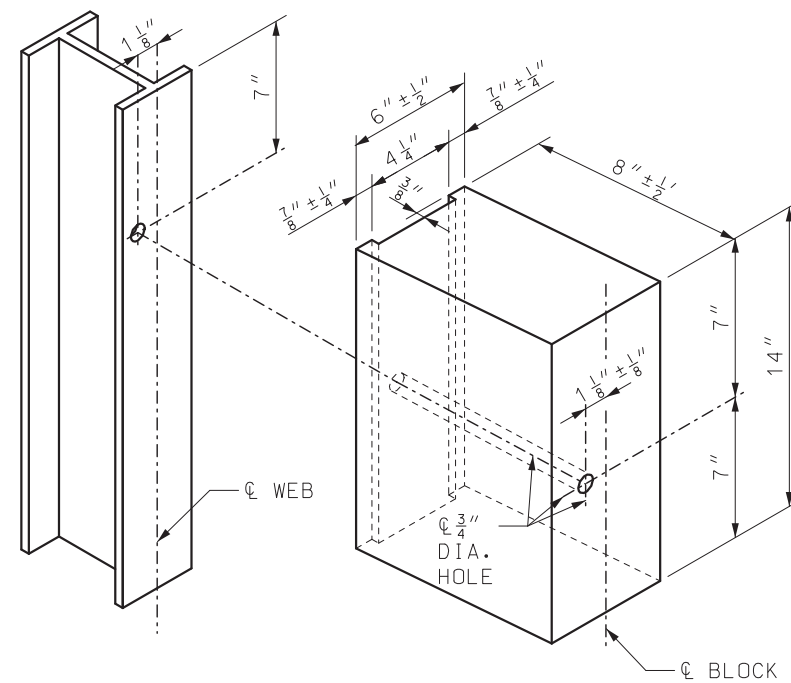
STRUCTURAL STEEL TUBING BLOCK DETAIL



21 5/8" WOOD BLOCK DETAIL


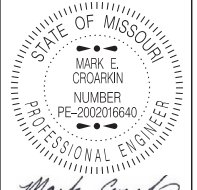


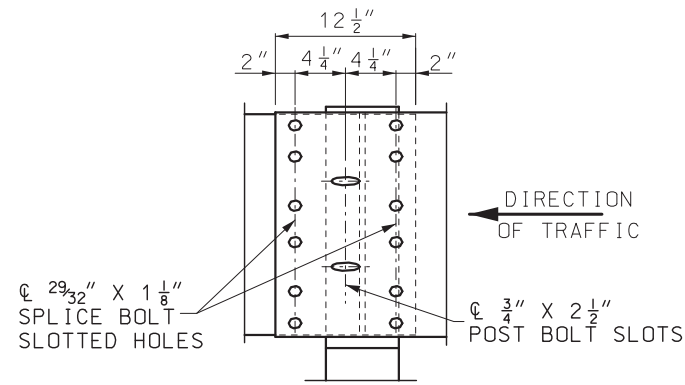
19" WOOD BLOCK DETAIL



14" WOOD BLOCK DETAIL

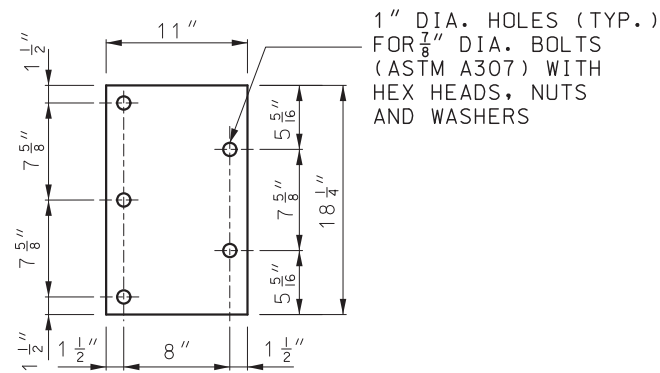
ALL HOLES DRILLED OR PUNCHED 13/16" DIA.

 MISSOURI HIGHWAYS AND TRANSPORTATION COMMISSION 105 WEST CAPITOL JEFFERSON CITY, MO 65102 1-888-ASK-MODOT (1-888-275-6636)		
 <p>STATE OF MISSOURI MARK E. CROARKIN NUMBER PE-2002016640 PROFESSIONAL ENGINEER</p> <p><i>Mark Croarkin</i> 04/08/2025 3:17:24 PM MARK E. CROARKIN - CIVIL MO-PE-2002016640</p>	<p>BRIDGE ANCHOR SECTION SAFETY BARRIER CURB ON BRIDGE</p>	
DATE EFFECTIVE: 7/1/2025 DATE PREPARED: 3/21/2025	<p>606.22V</p>	SHEET NO. 2 OF 6

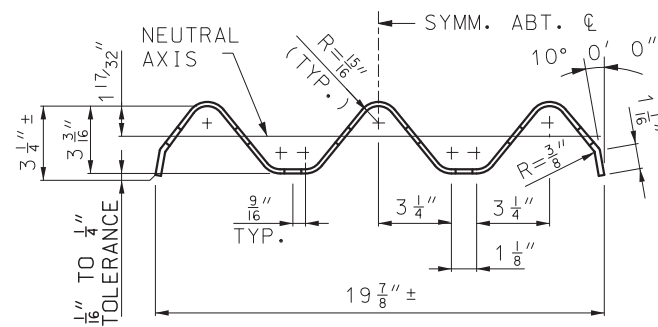


THRIE BEAM RAIL SPLICE AT POST

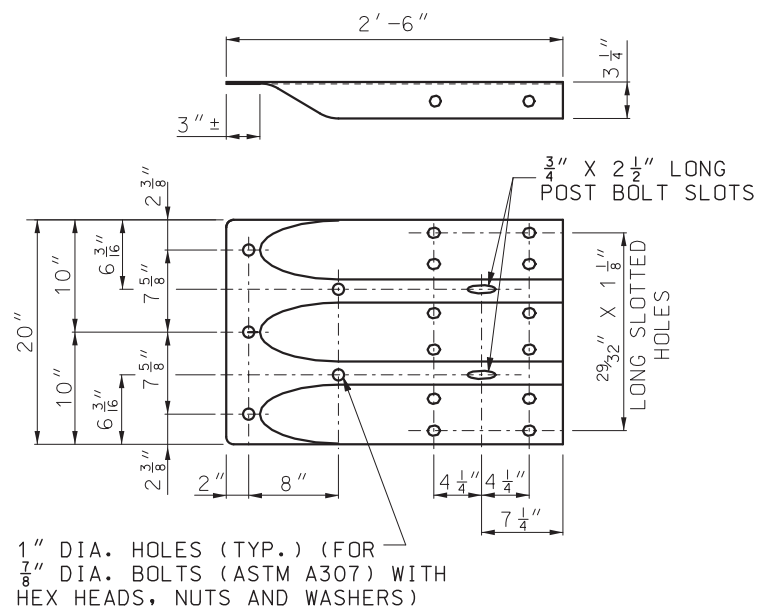
(1) THE CONTRACTOR MAY, AT HIS OPTION, FURNISH EQUIVALENT SECTIONS FABRICATED FROM MATERIAL MEETING AND IN ACCORDANCE WITH THE REQUIREMENTS OF ASTM A769 GRADE 36 OR 40. THE SECTIONS SHALL BE GALVANIZED AFTER FABRICATION IN ACCORDANCE WITH REQUIREMENTS OF AASHTO M 111.



5/8" BEARING PLATE

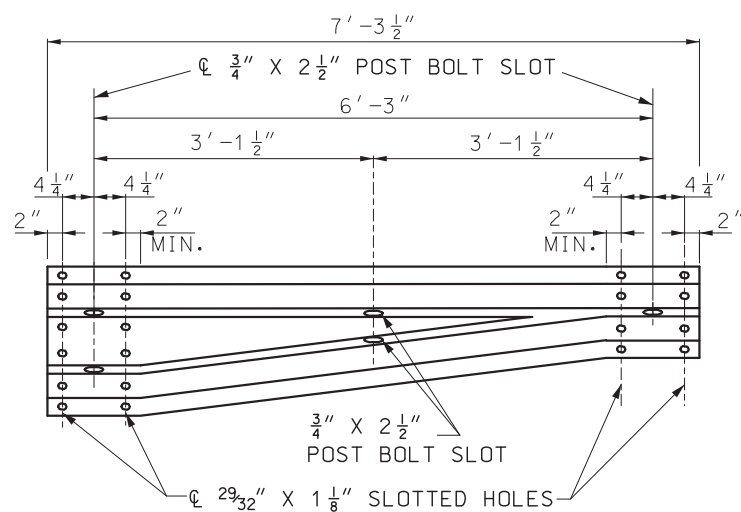


SECTION THROUGH THRIE BEAM RAIL



TERMINAL CONNECTOR

1" DIA. HOLES (TYP.) (FOR 7/8" DIA. BOLTS (ASTM A307) WITH HEX HEADS, NUTS AND WASHERS)



ASYMMETRICAL TRANSITION SECTION

GENERAL NOTES:

DESIGN BASED ON NCHRP REPORT 350 TEST LEVEL 3.

THE THRIE BEAM RAIL, TERMINAL CONNECTOR AND THE TRANSITION SECTION FOR THE BRIDGE ANCHOR SECTION SHALL BE MADE OF STEEL AND SHALL BE 12 GAGE.

FOR PROTECTIVE COATING AND MATERIAL REQUIREMENTS, SEE SECTION 1040 OF THE STANDARD SPECIFICATIONS.

RAIL POSTS SHALL BE SET PERPENDICULAR TO THE ROADWAY PROFILE GRADE AND VERTICALLY IN CROSS SECTION.

WASHERS SHALL BE USED AT ALL POST BOLTS.

STRUCTURAL TUBING BLOCK SHALL BE FABRICATED FROM ASTM A500 GRADE B STEEL AND GALVANIZED.

USE 5/8" BUTTON-HEAD OVAL SHOULDER BOLTS WITH HEX NUTS AT ALL SLOTS (THICKNESS OF HEX NUTS = 3/8" MIN.).


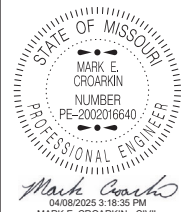
THE BEARING PLATE SHALL BE FABRICATED FROM GRADE A36 STEEL AND GALVANIZED.

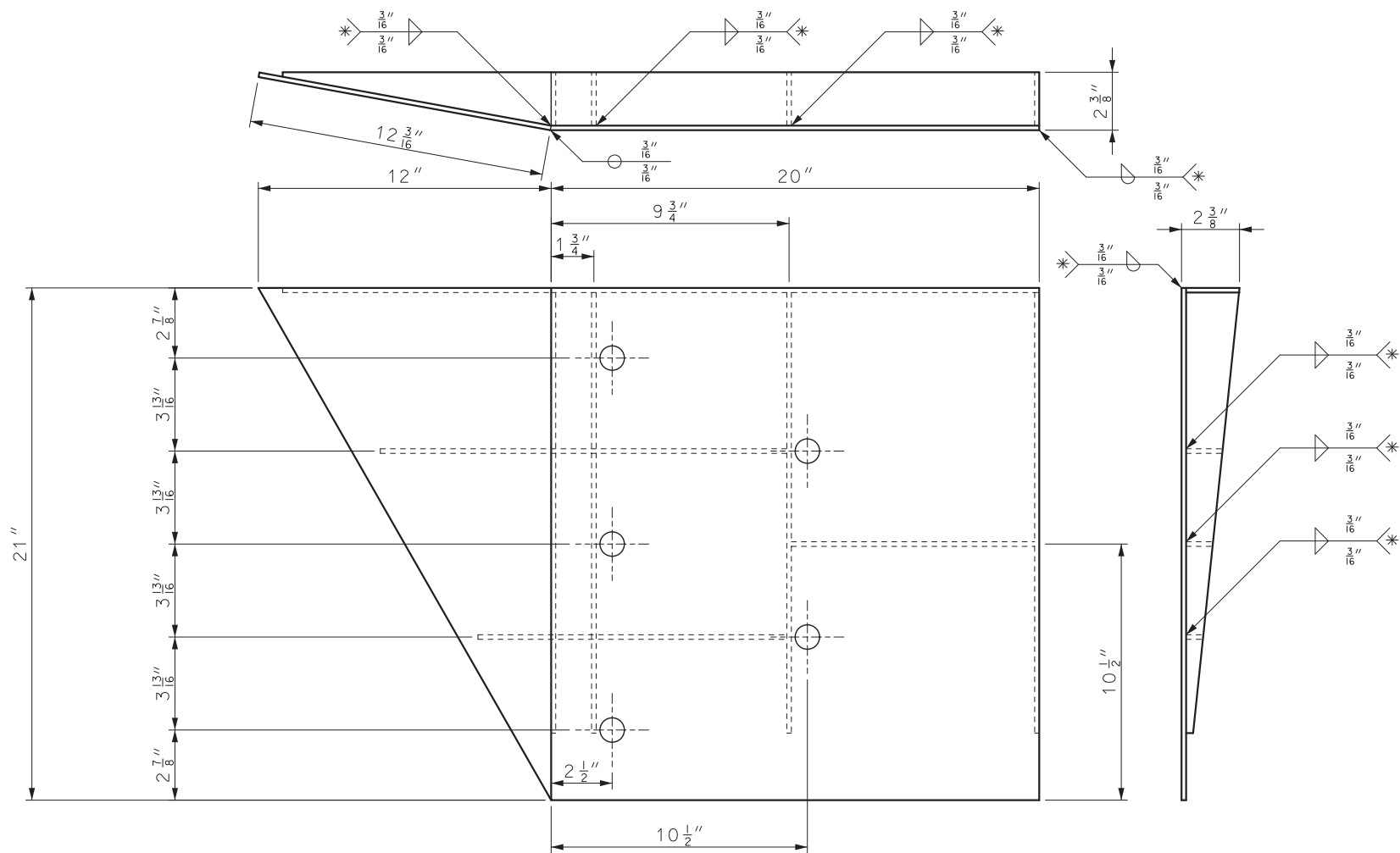
ALL LAP SPLICES, INCLUDING END SHOES, SHALL BE MADE IN THE DIRECTION OF TRAFFIC.

SEE STANDARD PLAN 606.00 FOR DETAILS NOT SHOWN.

THE COST OF FURNISHING, FABRICATING AND INSTALLING TRANSITION SECTION, COMPLETE IN PLACE, WILL BE PAID FOR AT THE CONTRACT UNIT PRICE PER EACH.

THE COST OF FURNISHING FABRICATING AND INSTALLING BRIDGE ANCHOR SECTION (SAFETY BARRIER CURB), COMPLETE IN PLACE, WILL BE PAID FOR AT THE CONTRACT UNIT PRICE PER EACH.

 <p>MISSOURI HIGHWAYS AND TRANSPORTATION COMMISSION</p> <p>105 WEST CAPITOL JEFFERSON CITY, MO 65102 1-888-ASK-MODOT (1-888-275-6636)</p>	
	<p>BRIDGE ANCHOR SECTION</p> <p>SAFETY BARRIER CURB ON BRIDGE</p>
<p>DATE EFFECTIVE: 7/1/2025</p> <p>DATE PREPARED: 3/21/2025</p>	<p>606.22V</p> <p>SHEET NO. 3 OF 6</p>



WELDING INSTRUCTION

* ALL FILLET WELDS SHALL BE 1" LONG SPACED AT 2".

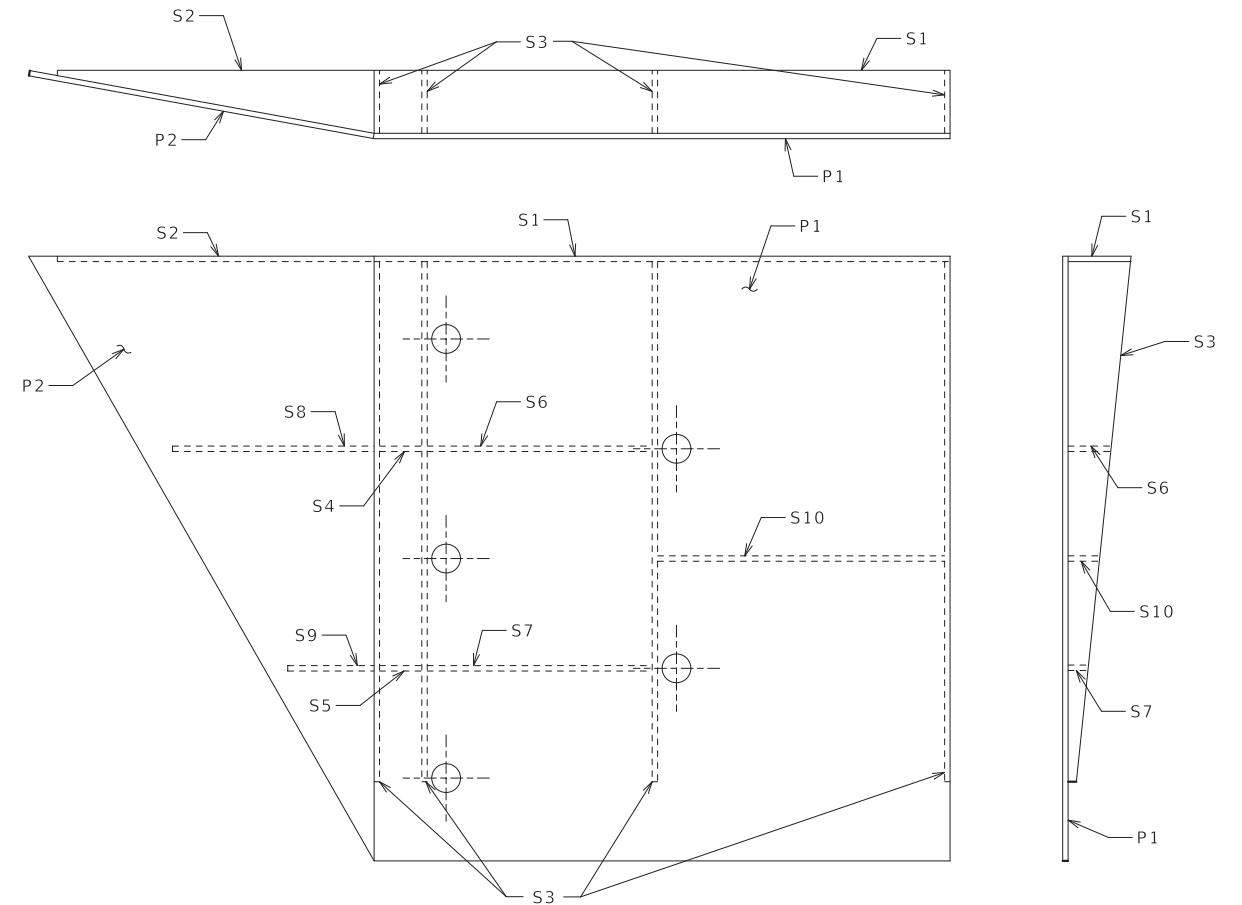


PLATE AND STIFFENER IDENTIFICATION

CONNECTOR PLATE DIMENSIONS (PER ASSEMBLY)

PIECE	QUANTITY	SHAPE	DIMENSIONS (A x B x C)
P1	1		20" x 21"
P2	1		21" x 12 3/16"
S1	1		20" x 2 3/16"
S2	1		11" x 2 3/16" x 3/16"
S3	4		18 1/4" x 2 3/16" x 1/4"
S4	1		1 3/8" x 1 1/2"
S5	1		1 3/8" x 1/16"
S6	1		7 3/4" x 1 1/2"
S7	1		7 3/4" x 1/16"
S8	1		7" x 1 1/2" x 1/4"
S9	1		3" x 1/16" x 1/8"
S10	1		9 7/8" x 1/16"

GENERAL NOTES:

COVER PLATE PANELS ARE 3/16" THICK.

ALL STIFFENERS ARE 1/4" THICK.

CONNECTOR PLATE SHALL BE FABRICATED FROM ASTM GRADE A36 STEEL AND GALVANIZED.

FOR GALVANIZED REQUIREMENTS, SEE SEC 1040.

ALL HOLE DIAMETERS SHALL BE 1".



MISSOURI HIGHWAYS AND TRANSPORTATION COMMISSION

105 WEST CAPITOL
JEFFERSON CITY, MO 65102
1-888-ASK-MODOT (1-888-275-6636)

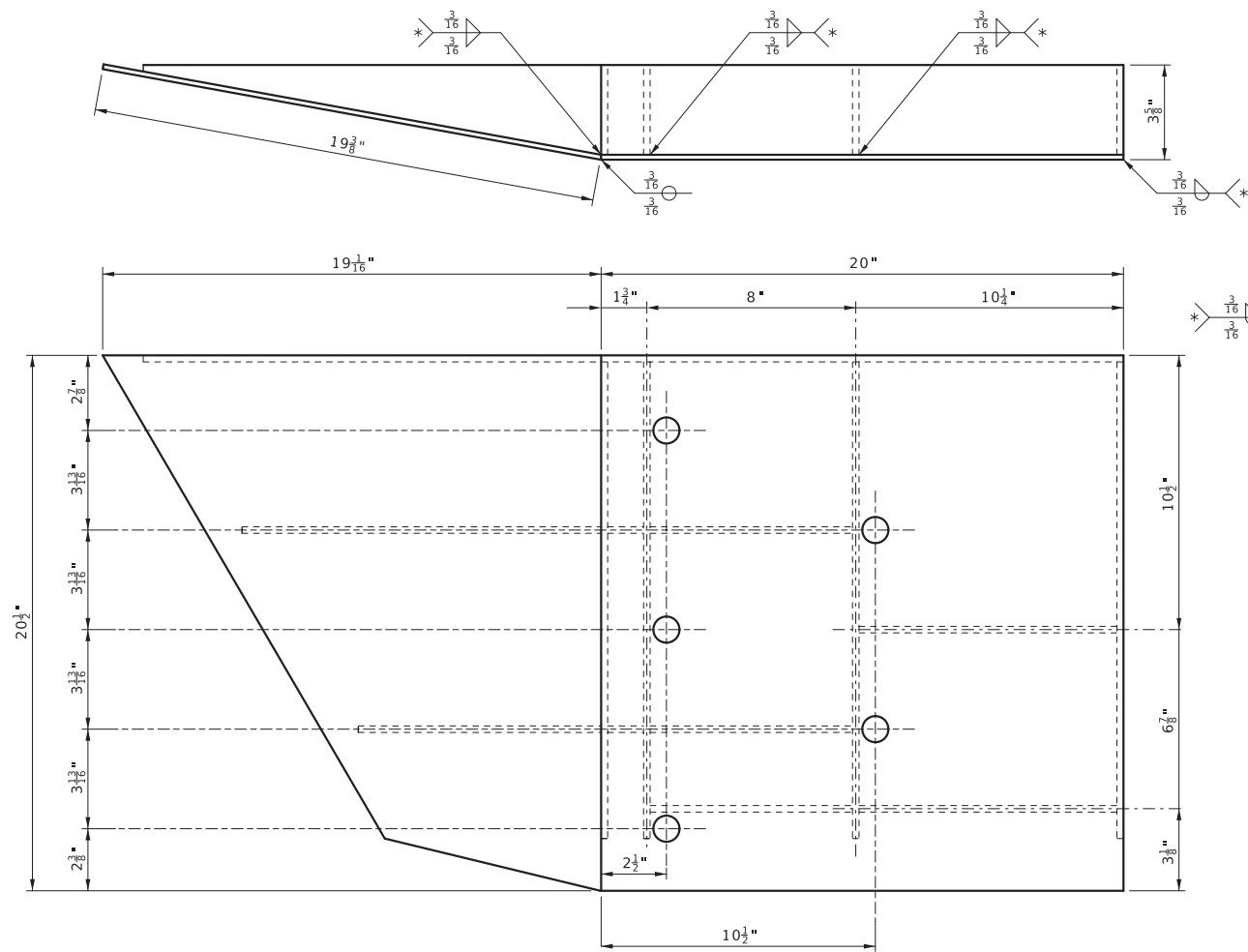


**BRIDGE ANCHOR SECTION
SAFETY BARRIER CURB ON BRIDGE
(CONNECTOR PLATE DETAIL)**

DATE EFFECTIVE: 7/1/2025
DATE PREPARED: 3/21/2025

606.22V

SHEET NO.
4 OF 6



WELDING INSTRUCTIONS

* ALL FILLET WELDS SHALL BE 1" LONG SPACED AT 2".

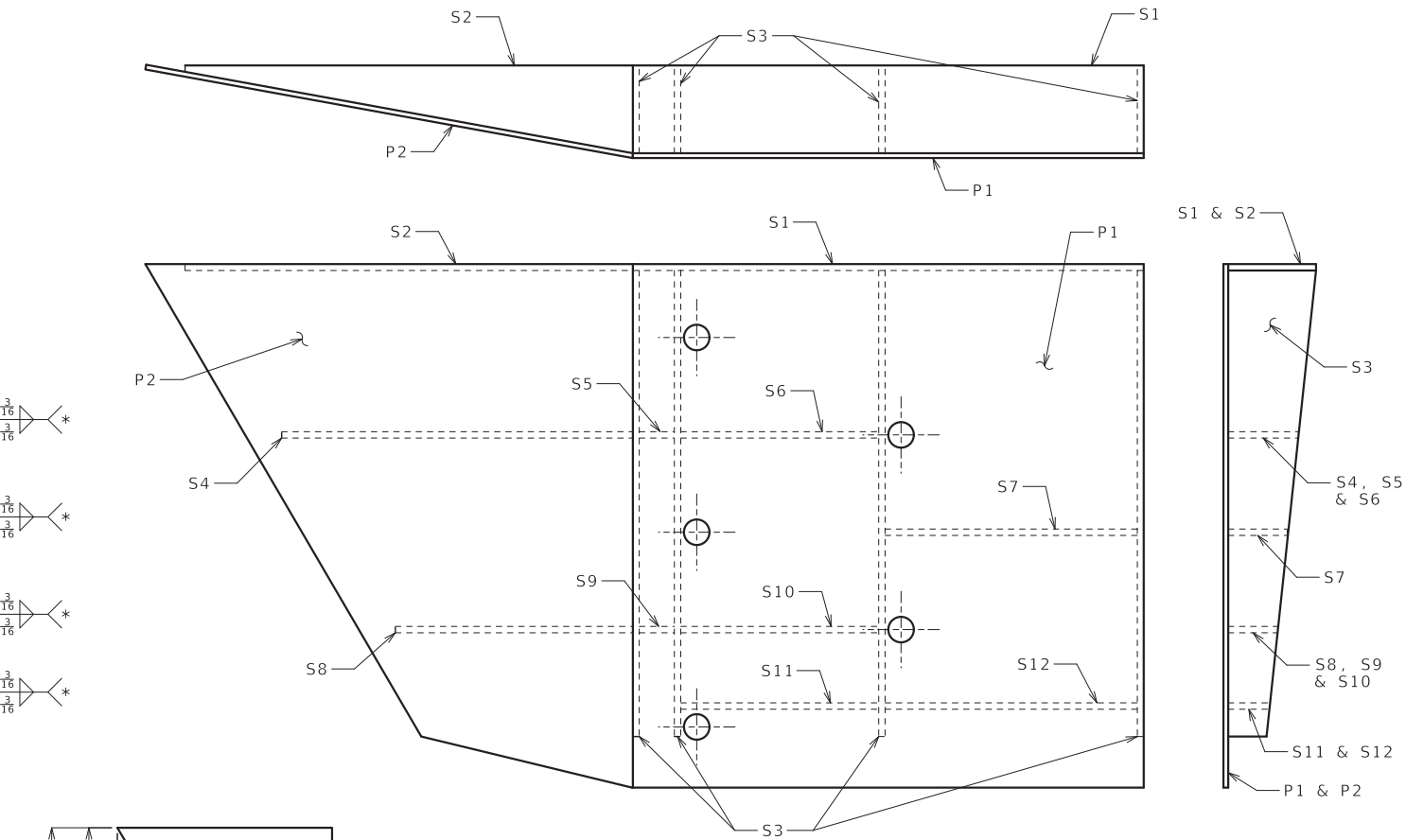
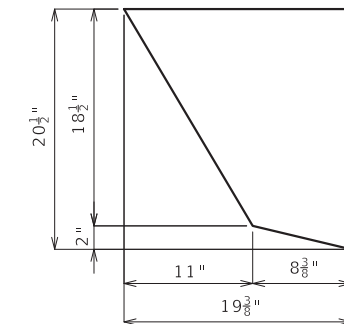


PLATE AND STIFFENER IDENTIFICATION



P2 DETAIL

CONNECTOR PLATE DIMENSIONS (PER ASSEMBLY)

PIECE	QUANTITY	SHAPE	DIMENSIONS (A x B x C)
P1	1		20" x 20 1/2"
P2	1		SEE P2 DETAIL
S1	1		20" x 2 3/16"
S2	1		11" x 2 3/16" x 3/16"
S3	4		18 1/4" x 2 3/16" x 1/4"
S4	1		1 3/8" x 1 1/2"
S5	1		1 3/8" x 1 1/16"
S6	1		7 3/4" x 1 1/2"
S7	1		7 3/4" x 1 1/16"
S8	1		7" x 1 1/2" x 1/4"
S9	1		3" x 1 1/16" x 1/8"
S10	1		9 7/8" x 1 1/16"

GENERAL NOTES:

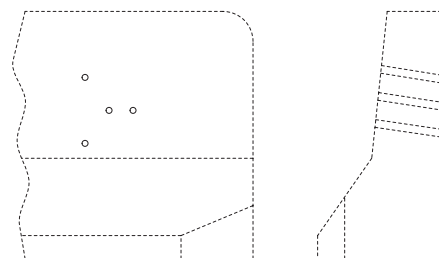
COVER PLATE PANELS ARE 3/16" THICK.

ALL STIFFENERS ARE 1/4" THICK.

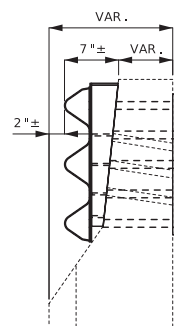
CONNECTOR PLATE SHALL BE FABRICATED FROM ASTM GRADE A36 STEEL AND GALVANIZED.

FOR GALVANIZED REQUIREMENTS, SEE SEC 1040.

ALL HOLE DIAMETERS SHALL BE 1".



1970s & 80s BARRIER END



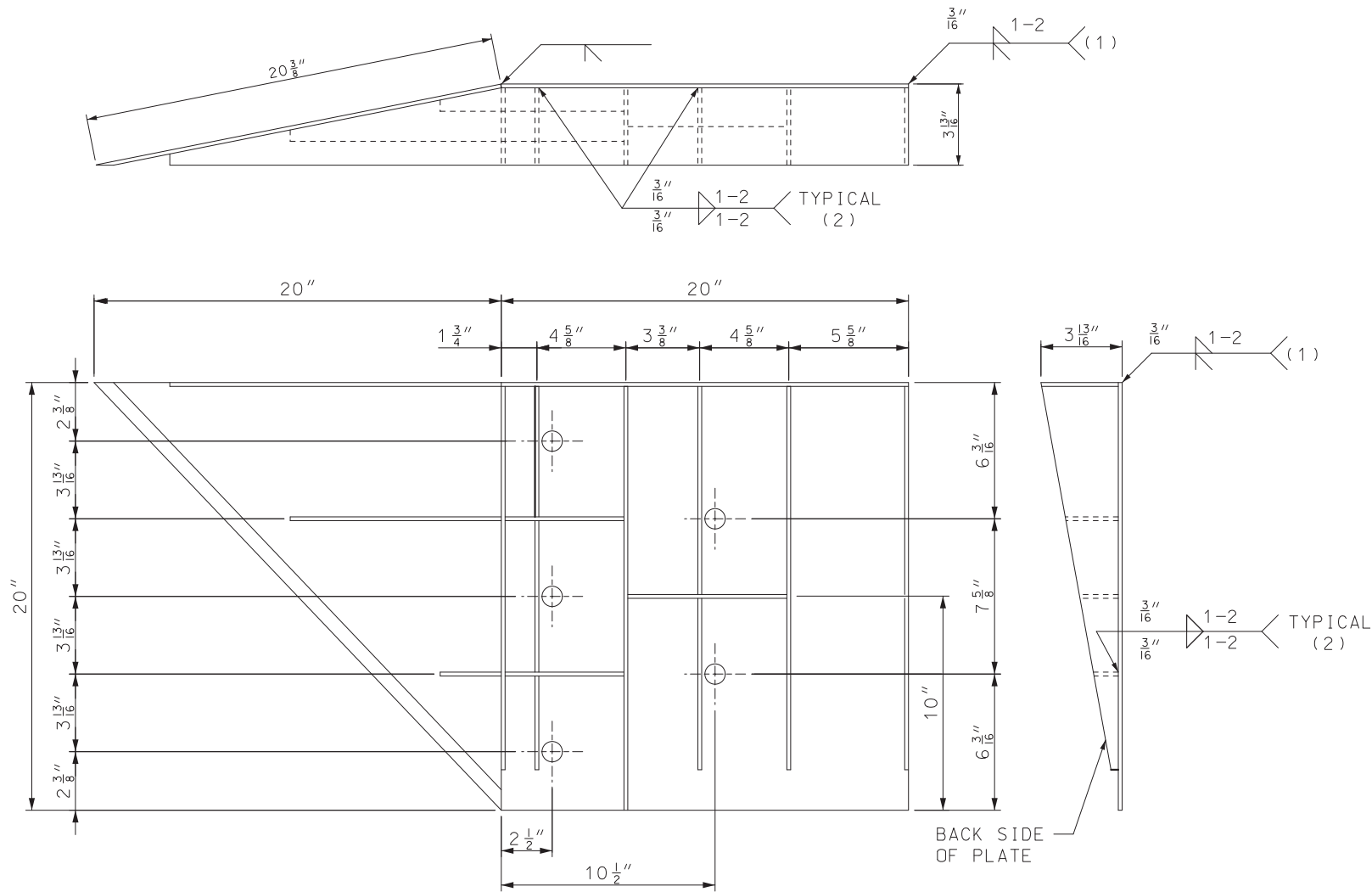
INSTALLATION DETAIL

MoDOT MISSOURI HIGHWAYS AND TRANSPORTATION COMMISSION
 105 WEST CAPITOL JEFFERSON CITY, MO 65102
 1-888-ASK-MODOT (1-888-275-6636)

STATE OF MISSOURI
 MARK E. CROARKIN
 NUMBER PE-2002016640
 PROFESSIONAL ENGINEER
 Mark Croarkin
 04/08/2025 3:20:41 PM
 MARK E. CROARKIN - CIVIL
 MO-PE-2002016640

BRIDGE ANCHOR SECTION
 SAFETY BARRIER CURB ON BRIDGE
 (1970s & 80s BARRIER
 CONNECTOR PLATE DETAIL)

DATE EFFECTIVE: 7/1/2025	606.22V	SHEET NO. 5 OF 6
DATE PREPARED: 3/21/2025		



WELDING INSTRUCTION
(VIEWED FROM BACK SIDE OF PLATE)

- (1) STIFFENERS LOCATED AT THE OUTSIDE EDGES OF THE COVER PLATES SHALL BE WELDED AS FOLLOWS:
SINGLE BEVEL GROOVE WELD ON EXTERNAL SIDES AND $\frac{3}{16}$ " FILLET WELD BY 1" LONG SPACED AT 2" ON INTERNAL SIDES.
- (2) STIFFENERS LOCATED ON THE INSIDE OF THE COVER PLATE SHALL BE WELDED AS FOLLOWS:
 $\frac{3}{16}$ " FILLET WELD BY 1" LONG SPACED AT 2".

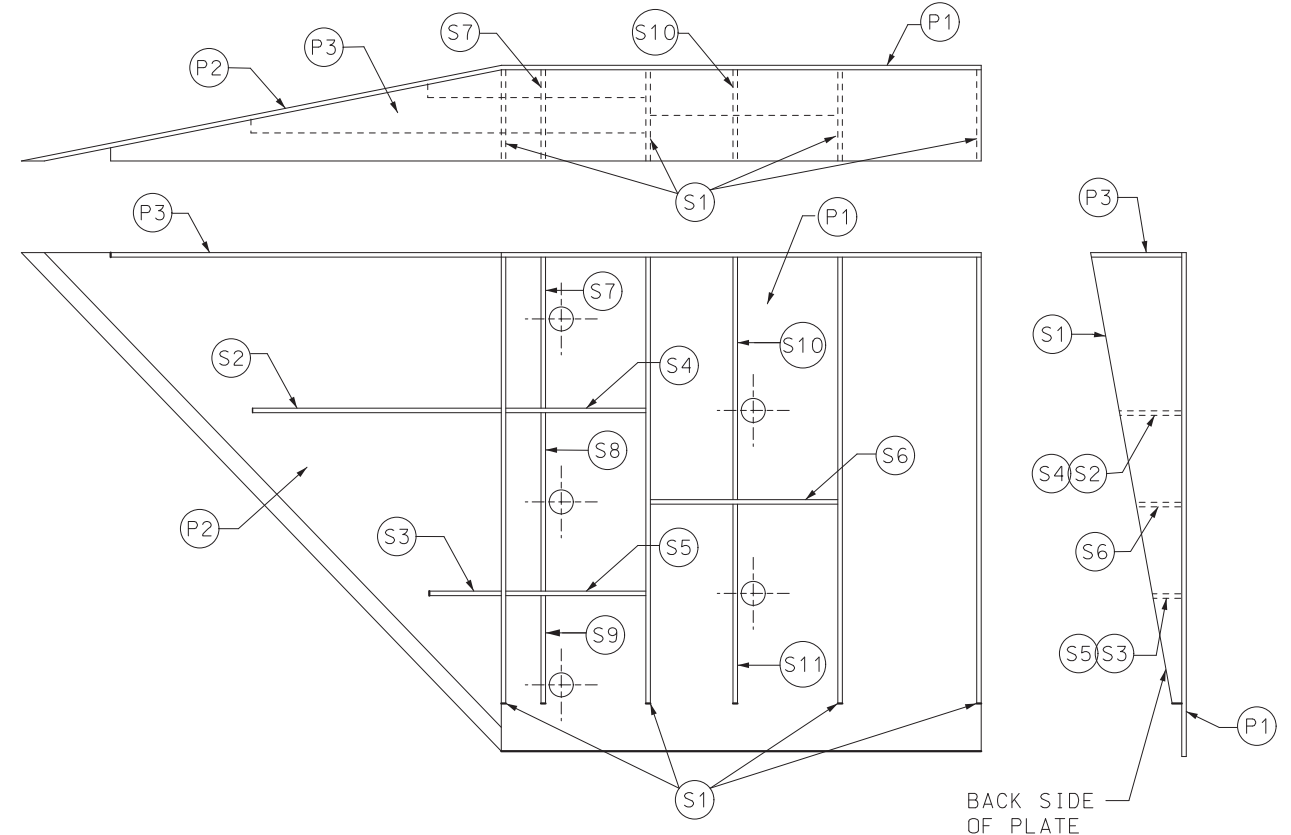


PLATE AND STIFFENER IDENTIFICATION
(VIEWED FROM BACK SIDE OF PLATE)

CONNECTOR PLATE DIMENSIONS (PER ASSEMBLY)			
PIECE	QUANTITY	SHAPE	SIZE (A x B x C x D)
P1	1		20" x 20"
P2	1		20" x 20" x 28 $\frac{3}{16}$ "
P3	1		39" x 3 $\frac{5}{8}$ " x 20" x 19 $\frac{5}{16}$ "
S1	4		18 $\frac{7}{16}$ " x 3 $\frac{5}{8}$ " x 18 $\frac{3}{4}$ "
S2	1		10 $\frac{1}{4}$ " x 2 $\frac{7}{16}$ " x 10 $\frac{3}{8}$ " x $\frac{1}{2}$ "
S3	1		3" x 1 $\frac{1}{16}$ " x 3 $\frac{1}{8}$ " x $\frac{1}{2}$ "
S4	1		6 $\frac{1}{8}$ " x 2 $\frac{7}{16}$ "
S5	1		6 $\frac{1}{8}$ " x 1 $\frac{1}{16}$ "
S6	1		7 $\frac{3}{4}$ " x 1 $\frac{3}{4}$ "
S7	1		2 $\frac{9}{16}$ " x 6" x 3 $\frac{5}{8}$ " x 5 $\frac{7}{8}$ "
S8	1		1 $\frac{5}{32}$ " x 7 $\frac{1}{2}$ " x 2 $\frac{1}{2}$ " x 7 $\frac{3}{8}$ "
S9	1		6 $\frac{1}{16}$ " x 6 $\frac{3}{16}$ " x 1 $\frac{3}{32}$ "
S10	1		1 $\frac{7}{8}$ " x 9 $\frac{7}{8}$ " x 3 $\frac{5}{8}$ " x 9 $\frac{11}{16}$ "
S11	1		8 $\frac{1}{2}$ " x 8 $\frac{3}{4}$ " x 1 $\frac{13}{16}$ "

GENERAL NOTES:

COVER PLATE PANELS ARE $\frac{3}{16}$ " THICK.

ALL STIFFENERS ARE $\frac{1}{4}$ " THICK.

CONNECTOR PLATE SHALL BE FABRICATED FROM ASTM GRADE A36 STEEL AND GALVANIZED.

FOR GALVANIZED REQUIREMENTS, SEE SEC 1040.

ALL HOLE DIAMETERS SHALL BE 1".

	MISSOURI HIGHWAYS AND TRANSPORTATION COMMISSION 105 WEST CAPITOL JEFFERSON CITY, MO 65102 1-888-ASK-MODOT (1-888-275-6636)	
	BRIDGE ANCHOR SECTION SAFETY BARRIER CURB ON BRIDGE (SINGLE SLOPE BARRIER CONNECTOR PLATE DETAIL)	
	DATE EFFECTIVE: 7/1/2025 DATE PREPARED: 3/21/2025	SHEET NO. 606.22V 6 OF 6