

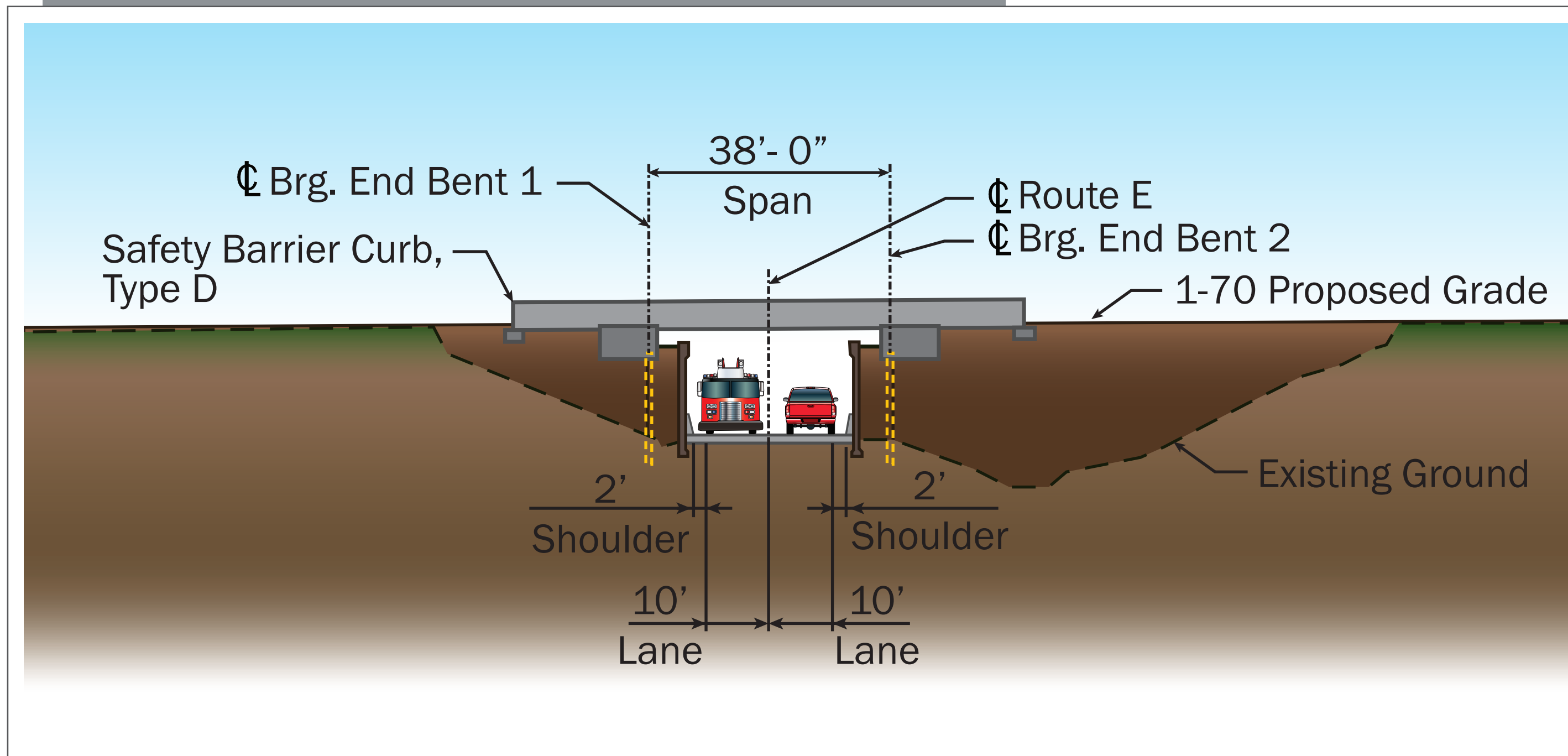
# I-70 over Route E



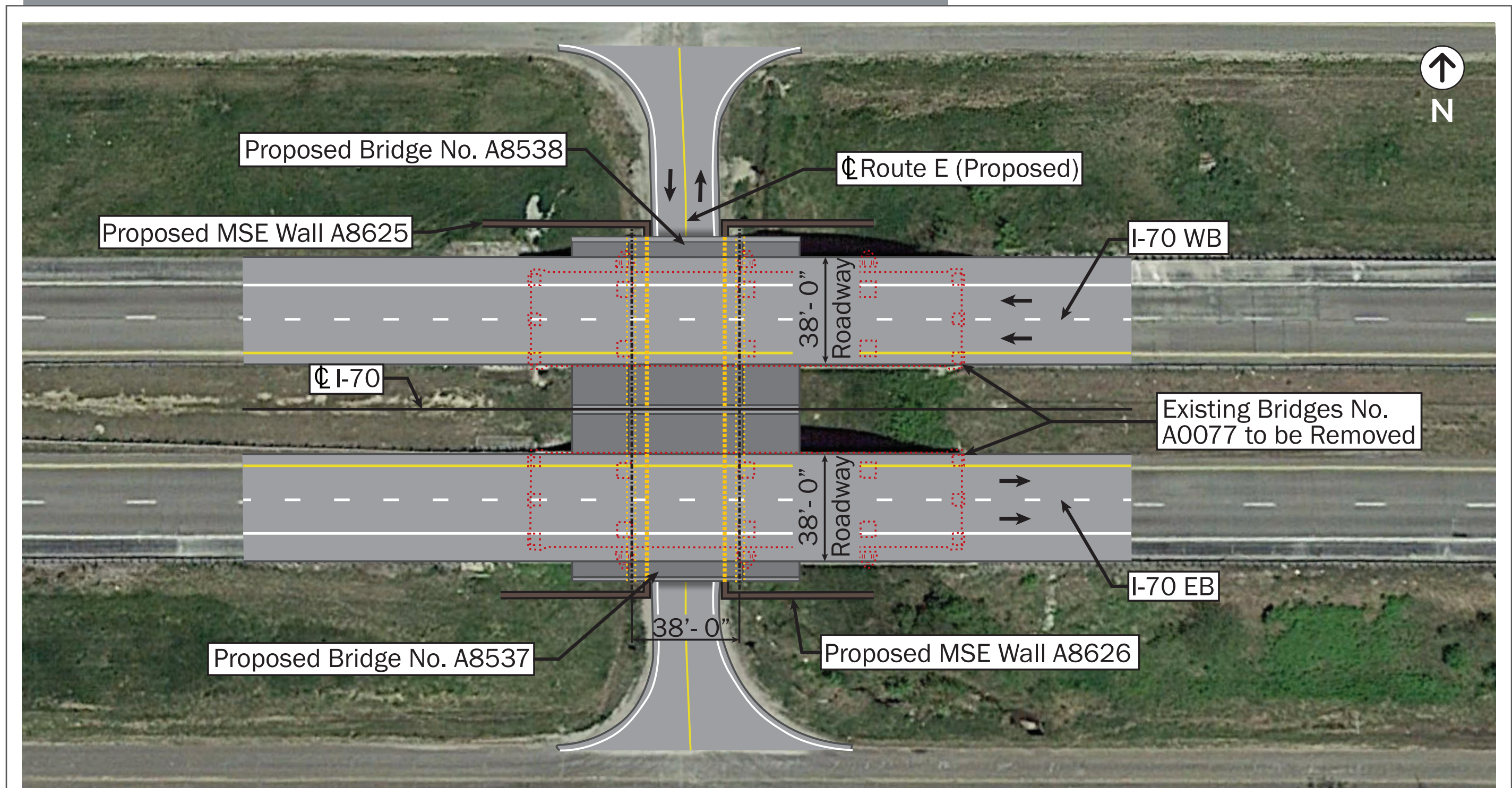
MoDOT Job No. J3I3010 | Lafayette County

Public Meeting | April 6, 2017

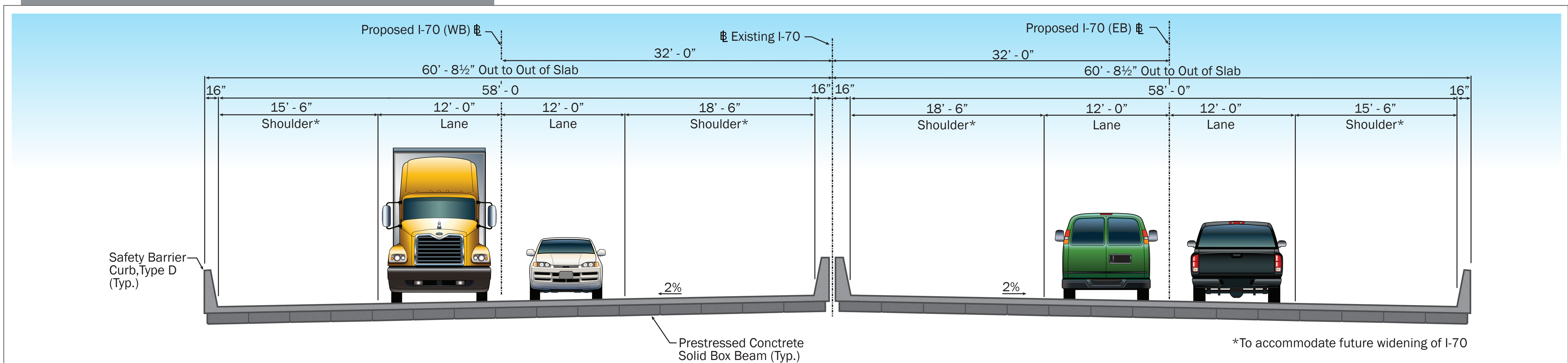
## 1 Elevation of proposed I-70 over Route E



## 2 Plan view of proposed I-70 over Route E

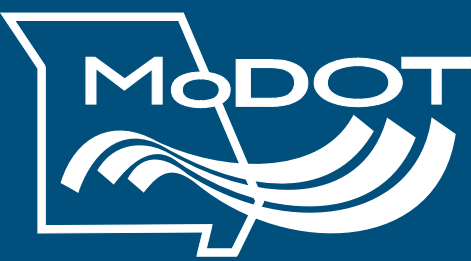


## 3 Interstate 70 Bridges Typical Sections





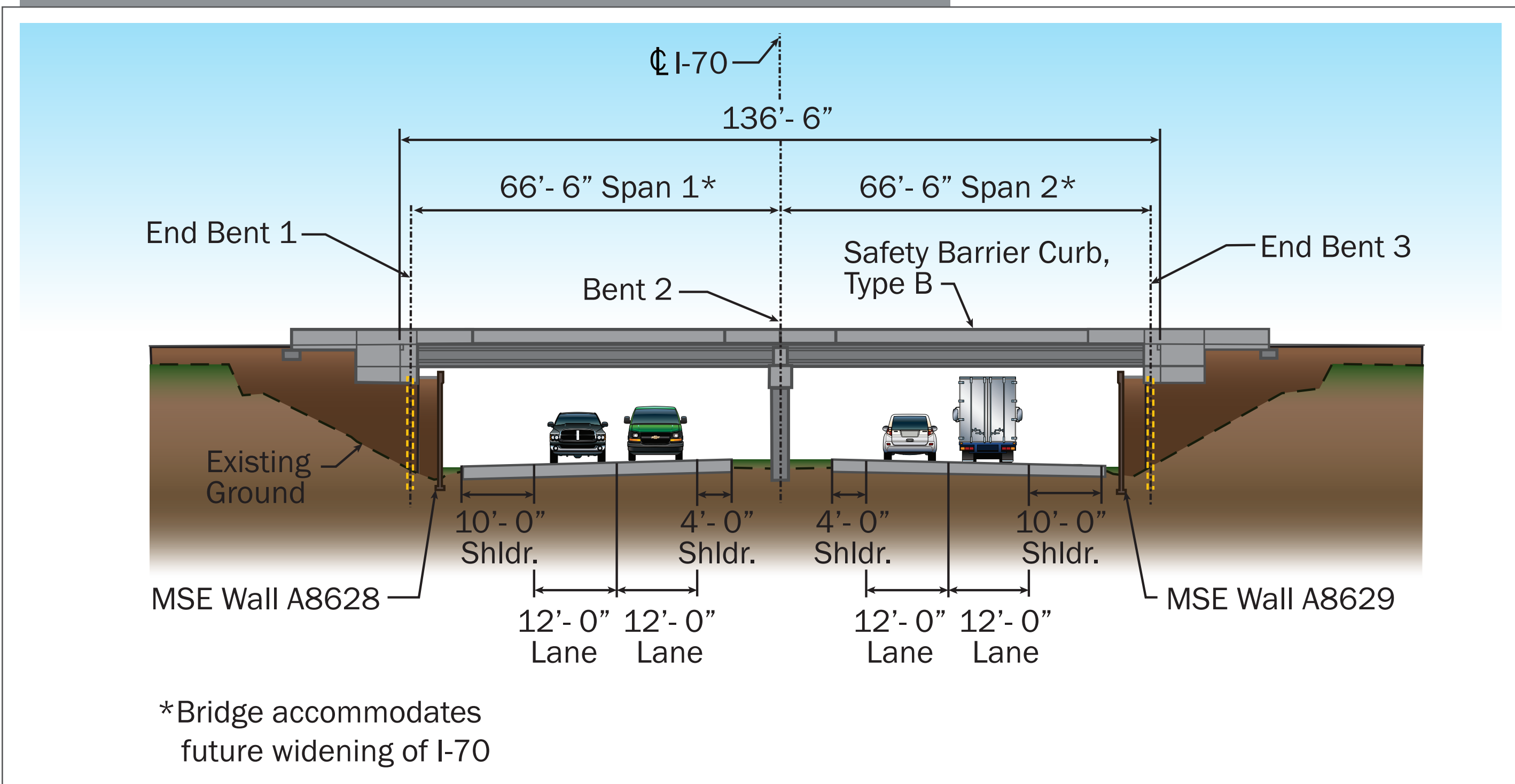
# Route H over I-70



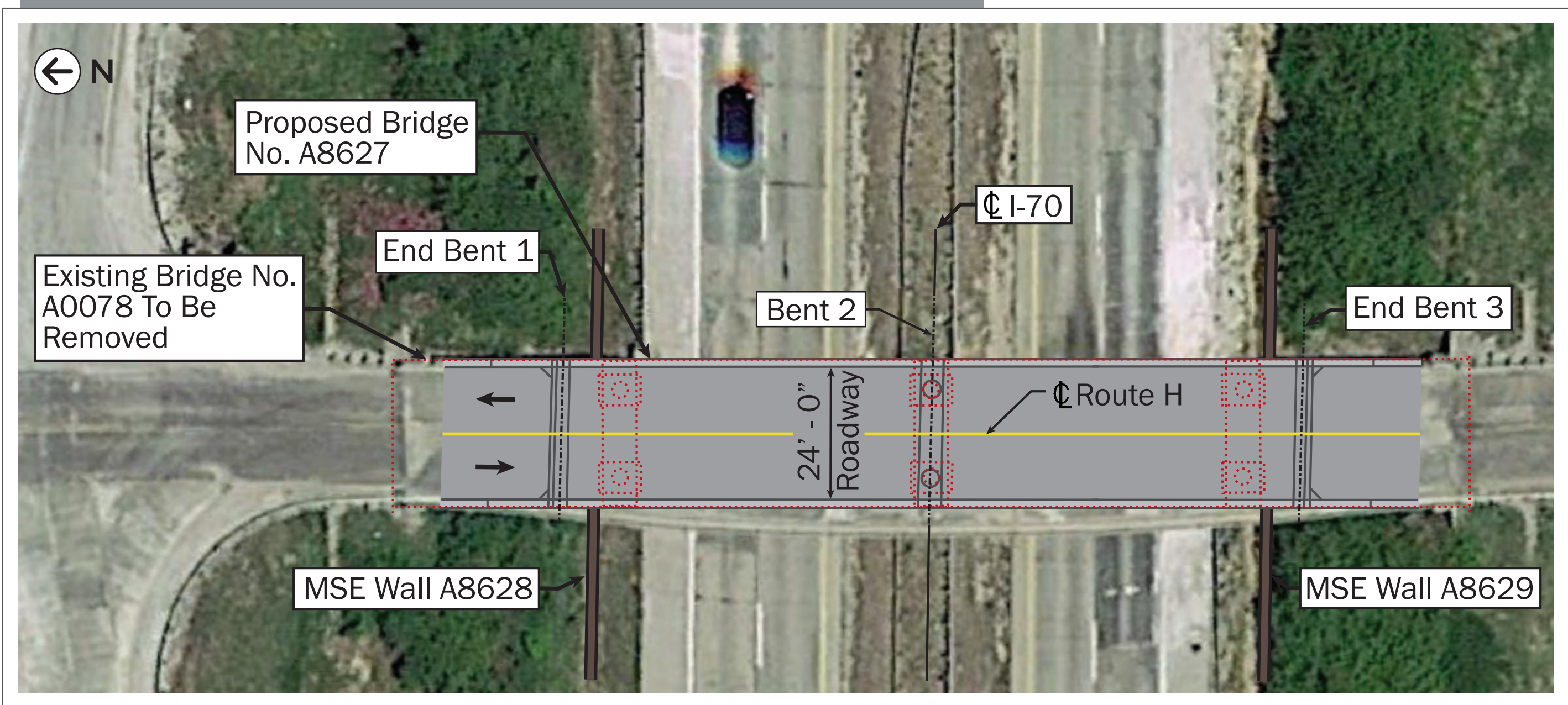
MoDOT Job No. J3I3010 | Lafayette County

Public Meeting | April 6, 2017

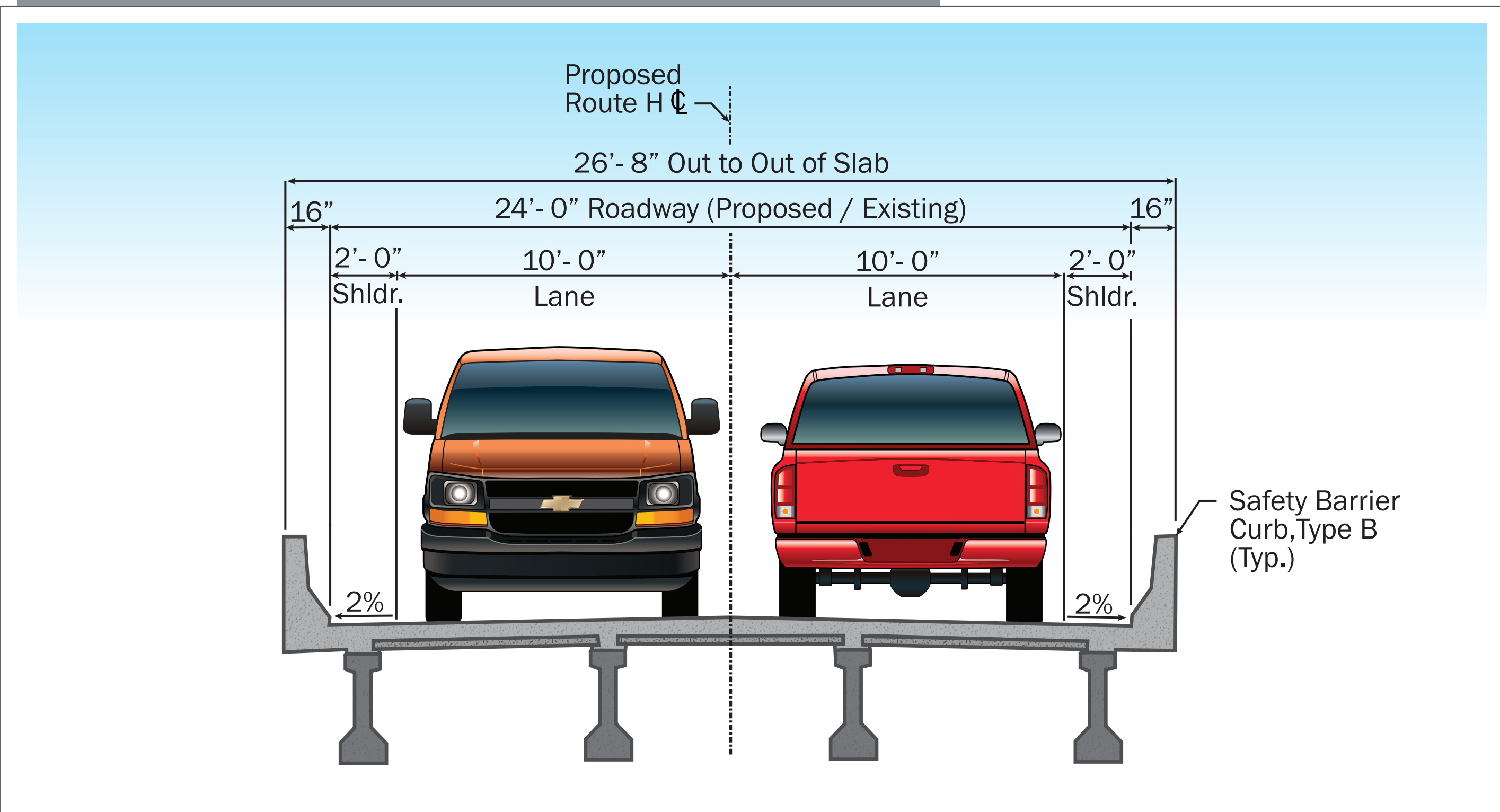
## 1 Elevation of proposed Route H over I-70



## 2 Plan view of proposed Route H over I-70



## 3 Route H Bridge Typical Section





# I-70 over Route E



MoDOT Job No. J3I3010 | Lafayette County

Public Meeting | April 6, 2017



PARSONS