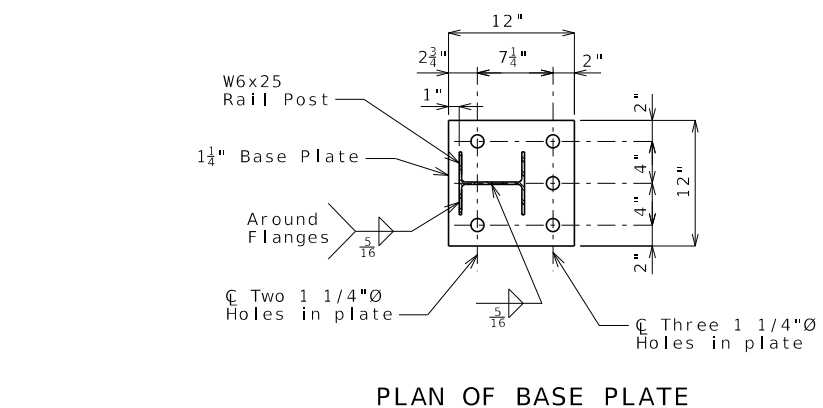
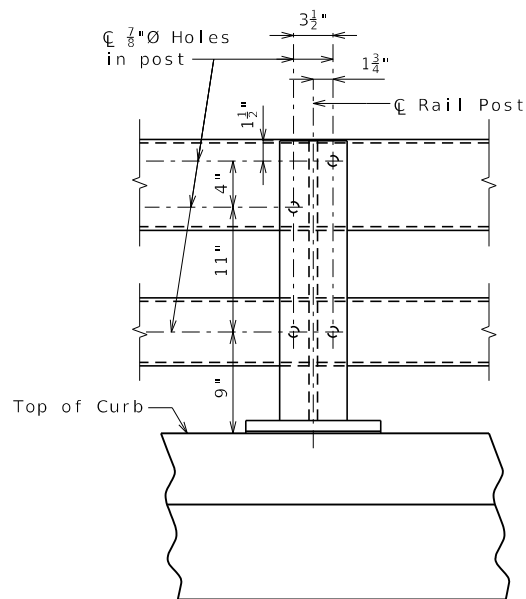


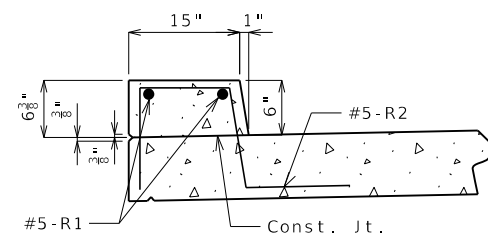
SECTION AT RAIL POST



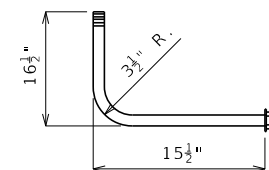
PLAN OF BASE PLATE



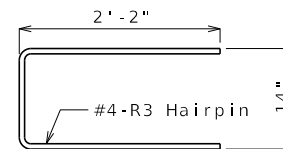
PART ELEVATION A-A



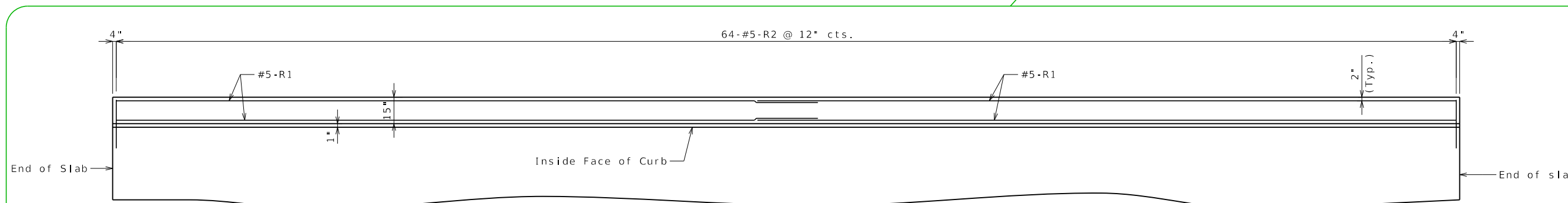
PART SECTION SHOWING CURB



DETAIL A



DETAIL B



PLAN OF LEFT CURB SHOWING REINFORCEMENT

(Left curb shown. Right curb similar.)

Note: Longitudinal dimensions are horizontal along outside face of curb.

Detailed Checked

Note: This drawing is not to scale. Follow dimensions.

Sheet No. of

Bridge Rail Notes:

Rail posts shall be set perpendicular to roadway profile grade, vertically in cross section and aligned in accordance with Sec 713 except that the rail posts shall be aligned by the use of shims such that the post deviates not more than 1/2 inch from true horizontal alignment after final adjustment. The shims shall be 3" x 1 3/4" and placed between the post and the rail. The thickness of the shims shall be determined by the contractor and verified by the engineer before ordering material for this work.

Rail posts shall be seated on elastomeric pads having the same dimensions as the base plate and 1/16-inch thickness. Pads may be any elastomeric material, plain or fibered, having a hardness (Durometer) of 50 or greater, and certified by the manufacturer. Additional pads or half pads may be used for shimming for alignment. Post heights shown will increase by the thickness of the pad.

HSS = Hollow Structural Section

Dimensions of bridge rails are measured horizontally.

Bridge Rails will be measured to the nearest linear foot for each structure measured from end of slab to end of slab.

Payment for furnishing all materials and labor necessary to install Bridge Rail, complete in place, will be considered completely covered by the contract unit price for Bridge Rail (Two Tube Structural Steel) per linear foot.

Guardrail delineators shall be attached to the top of the guardrail post using galvanized anchorage as shown on Missouri Standard Plan 606.00 and in accordance with Sec 606. Delineators on bridges with two-lane, two-way traffic shall have retroreflective sheeting on both sides. Guardrail delineators will be considered completely covered by the contract unit price for Bridge Rail (Two Tube Structural Steel).

Curb Notes:

Top of curb shall be built parallel to grade.

All exposed edges of curb shall have either a 1/2-inch radius or a 3/8-inch bevel, unless otherwise noted.

Use a minimum lap of 2'-11" for #5-R1 bars.

The cross-sectional area of curb above the slab = 0.66 sq. ft.

Concrete in the curb shall be Class B-2.

The curb shall be cured by application of Type 1-D Liquid Membrane-Forming Curing Compound in accordance with Sec 1055 and sealed in accordance with Sec 703. The contractor shall remove all curing compound in accordance with the manufacturer's recommendations before the concrete sealer is applied.

Measurement of the curb is to the nearest linear foot for each structure, measured along the outside top of slab from end of slab to end of slab.

Payment for all concrete and reinforcement, complete in place, will be considered completely covered by the contract unit price for Concrete Curb (Bridge Rail) per linear foot.

DATE PREPARED		10/17/2024	
ROUTE	STATE	MO	
DISTRICT	SHEET NO.	000	
COUNTY			
JOB NO.			
CONTRACT ID.			
PROJECT NO.			
BRIDGE NO.			

DESCRIPTION	DATE

MISSOURI HIGHWAYS AND TRANSPORTATION COMMISSION



105 WEST CAPITOL  
JEFFERSON CITY, MO 65102  
1-888-ASK-MODOT (1-888-275-6636)

## TTR1

## Guidance

Standard Drawing Guidance (do not show on plans):

① Modify as required.

TL-4 (NCHRP 350) bridge rail is typically used on spread box beam bridges and may be used on adjacent box beam bridges where reinforcement is embedded in the beam.

Use only in certain applications because of cost. Acceptable for use when roadway width or site distance is a concern. Curb shall be used to prevent drainage over deck.