

COOPER COUNTY ROUTE 87

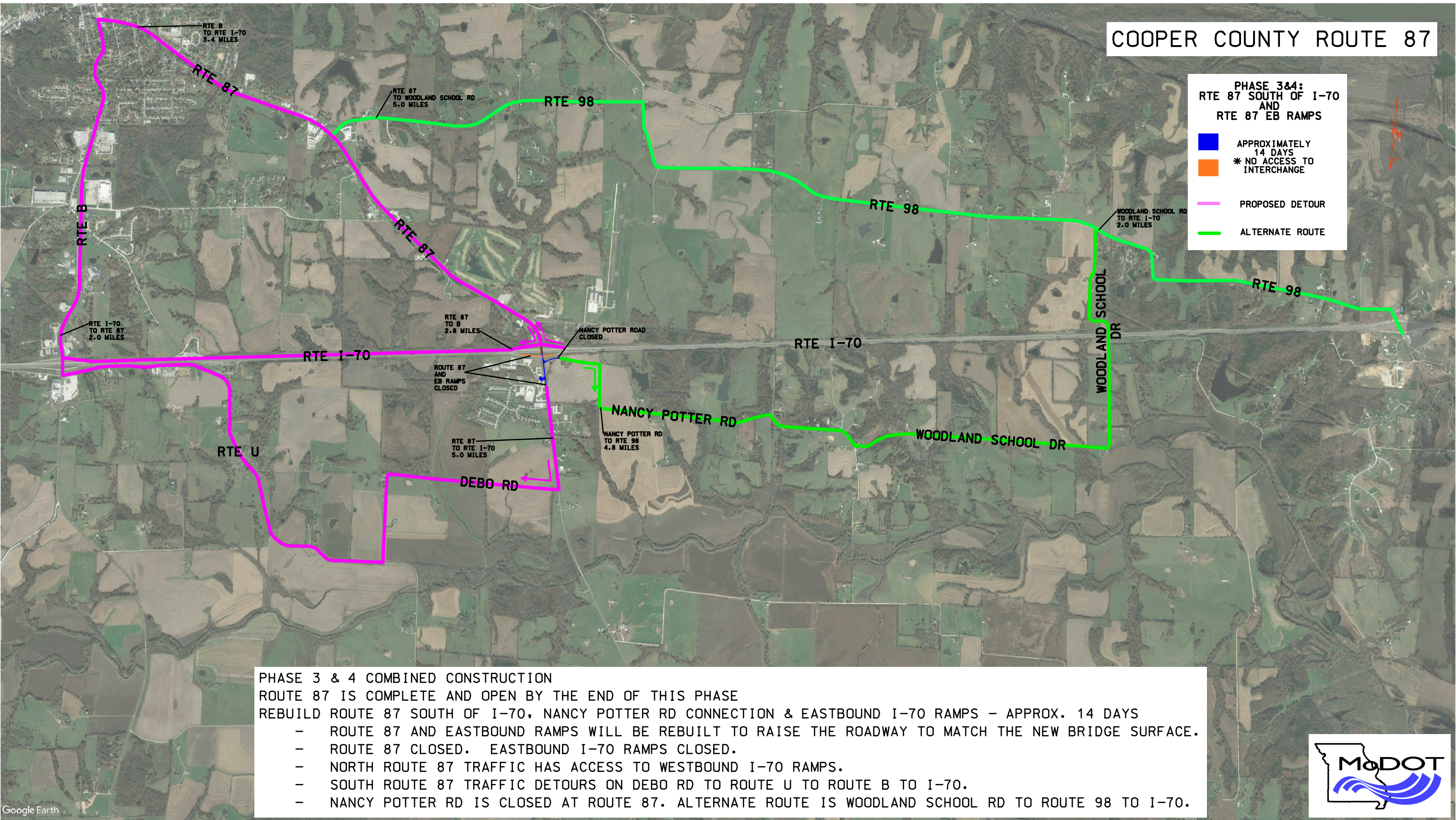
PHASE 3&4:
RTE 87 SOUTH OF I-70
AND
RTE 87 EB RAMPS

■ APPROXIMATELY
14 DAYS

■ * NO ACCESS TO
INTERCHANGE

— PROPOSED DETOUR

— ALTERNATE ROUTE



PHASE 3 & 4 COMBINED CONSTRUCTION

ROUTE 87 IS COMPLETE AND OPEN BY THE END OF THIS PHASE

REBUILD ROUTE 87 SOUTH OF I-70, NANCY POTTER RD CONNECTION & EASTBOUND I-70 RAMPS – APPROX. 14 DAYS

- ROUTE 87 AND EASTBOUND RAMPS WILL BE REBUILT TO RAISE THE ROADWAY TO MATCH THE NEW BRIDGE SURFACE.
- ROUTE 87 CLOSED. EASTBOUND I-70 RAMPS CLOSED.
- NORTH ROUTE 87 TRAFFIC HAS ACCESS TO WESTBOUND I-70 RAMPS.
- SOUTH ROUTE 87 TRAFFIC DETOURS ON DEBO RD TO ROUTE U TO ROUTE B TO I-70.
- NANCY POTTER RD IS CLOSED AT ROUTE 87. ALTERNATE ROUTE IS WOODLAND SCHOOL RD TO ROUTE 98 TO I-70.

