




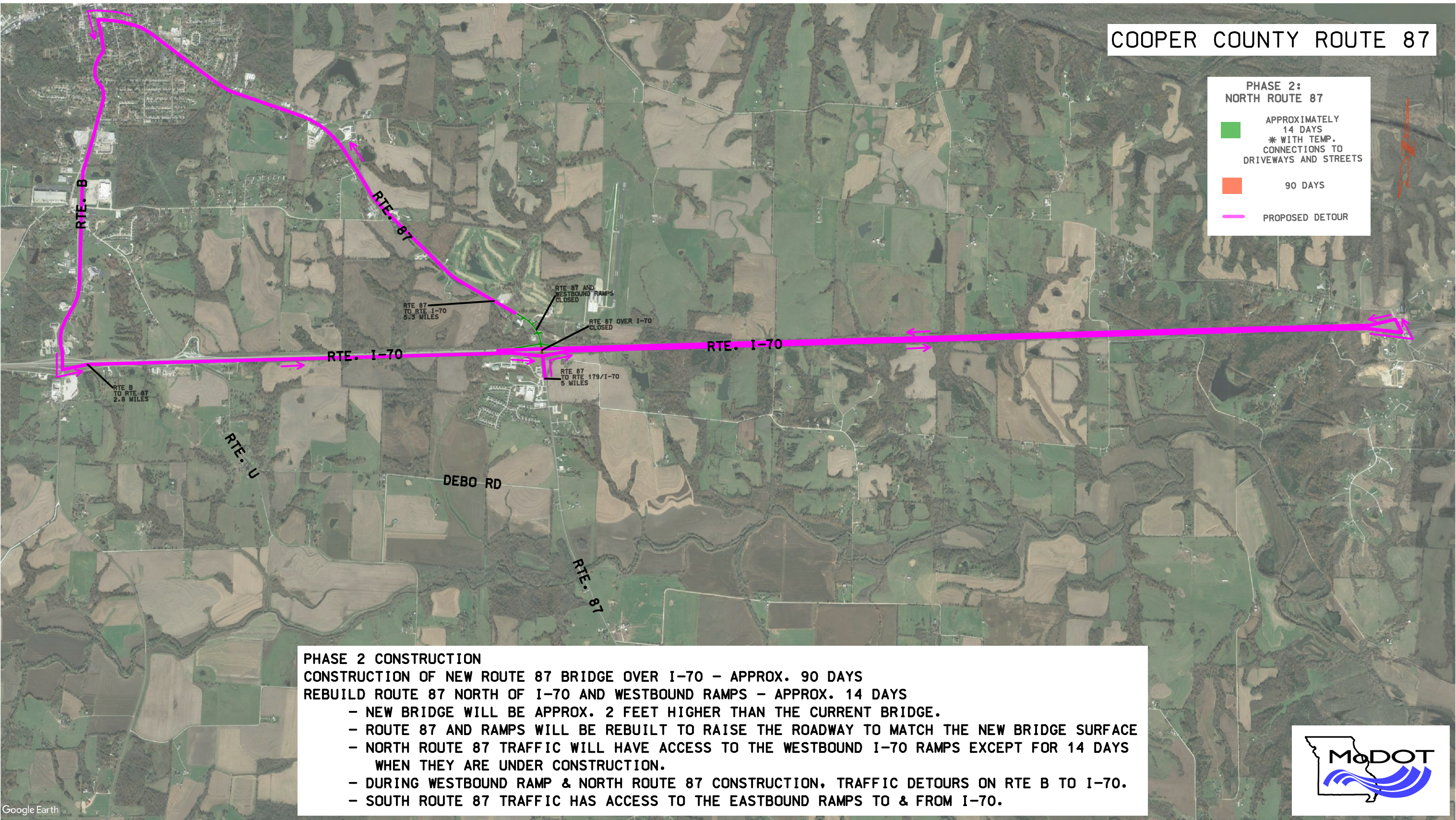
COOPER COUNTY ROUTE 87

**PHASE 2:
NORTH ROUTE 87**

 APPROXIMATELY
14 DAYS
* WITH TEMP.
CONNECTIONS TO
DRIVEWAYS AND STREETS

 90 DAYS

 PROPOSED DETOUR



PHASE 2 CONSTRUCTION
CONSTRUCTION OF NEW ROUTE 87 BRIDGE OVER I-70 – APPROX. 90 DAYS
REBUILD ROUTE 87 NORTH OF I-70 AND WESTBOUND RAMPS – APPROX. 14 DAYS

- NEW BRIDGE WILL BE APPROX. 2 FEET HIGHER THAN THE CURRENT BRIDGE.
- ROUTE 87 AND RAMPS WILL BE REBUILT TO RAISE THE ROADWAY TO MATCH THE NEW BRIDGE SURFACE
- NORTH ROUTE 87 TRAFFIC WILL HAVE ACCESS TO THE WESTBOUND I-70 RAMPS EXCEPT FOR 14 DAYS WHEN THEY ARE UNDER CONSTRUCTION.
- DURING WESTBOUND RAMP & NORTH ROUTE 87 CONSTRUCTION, TRAFFIC DETOURS ON RTE B TO I-70.
- SOUTH ROUTE 87 TRAFFIC HAS ACCESS TO THE EASTBOUND RAMPS TO & FROM I-70.

