

COOPER COUNTY ROUTE 87

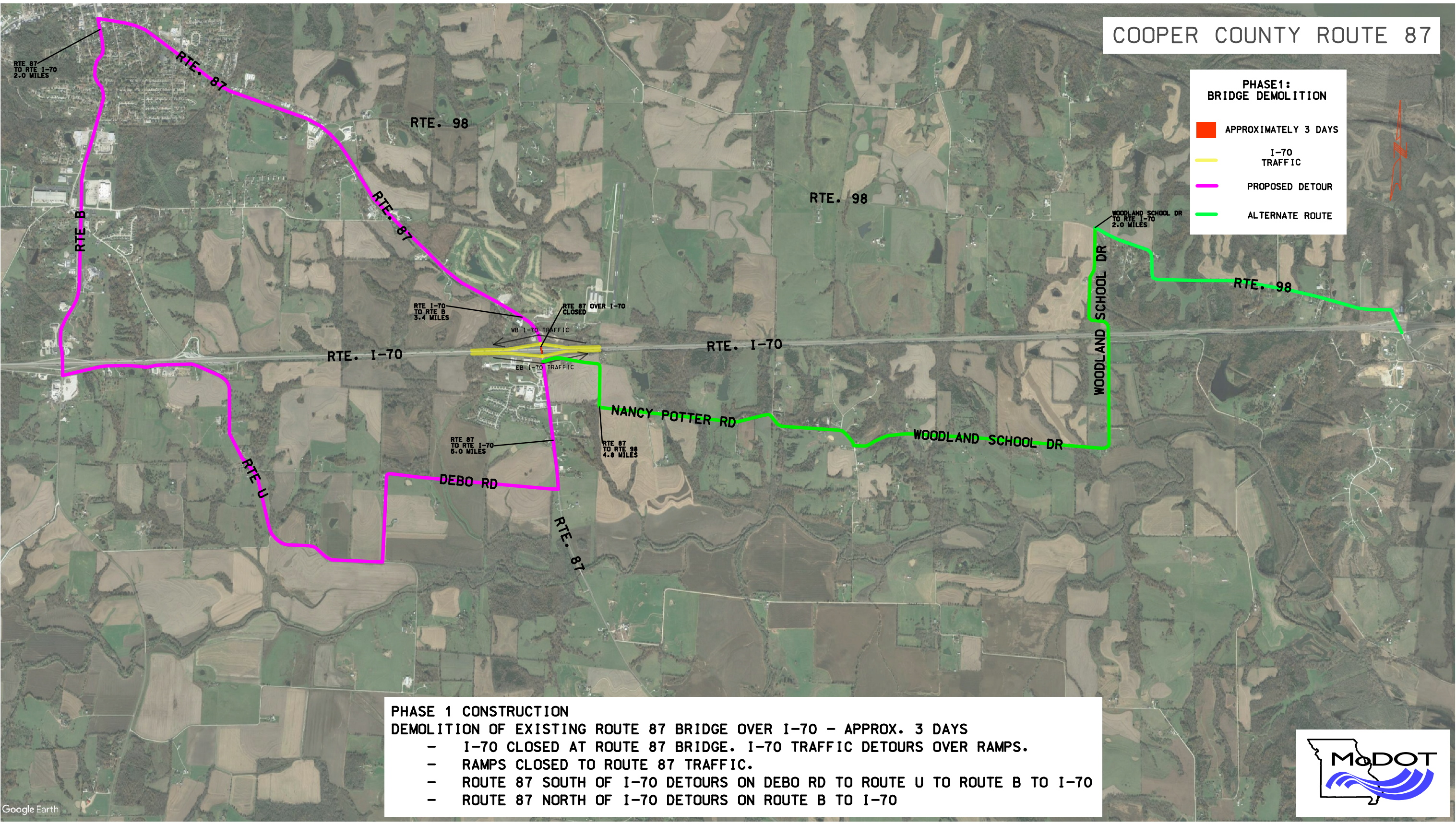
PHASE1:
BRIDGE DEMOLITION

APPROXIMATELY 3 DAYS

I-70
TRAFFIC

PROPOSED DETOUR

ALTERNATE ROUTE



PHASE 1 CONSTRUCTION
DEMOLITION OF EXISTING ROUTE 87 BRIDGE OVER I-70 – APPROX. 3 DAYS

- I-70 CLOSED AT ROUTE 87 BRIDGE. I-70 TRAFFIC DETOURS OVER RAMPS.
- RAMPS CLOSED TO ROUTE 87 TRAFFIC.
- ROUTE 87 SOUTH OF I-70 DETOURS ON DEBO RD TO ROUTE U TO ROUTE B TO I-70
- ROUTE 87 NORTH OF I-70 DETOURS ON ROUTE B TO I-70

