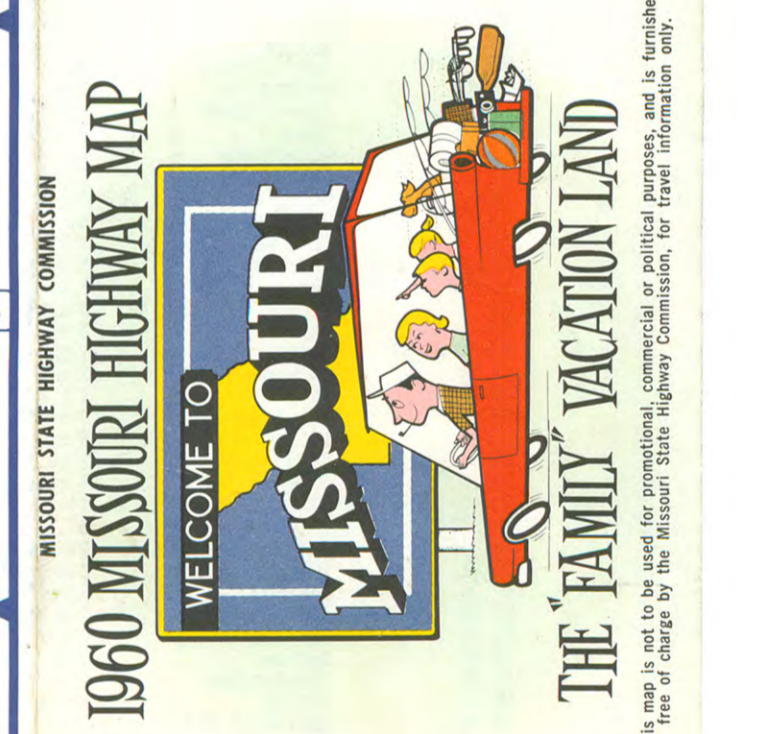
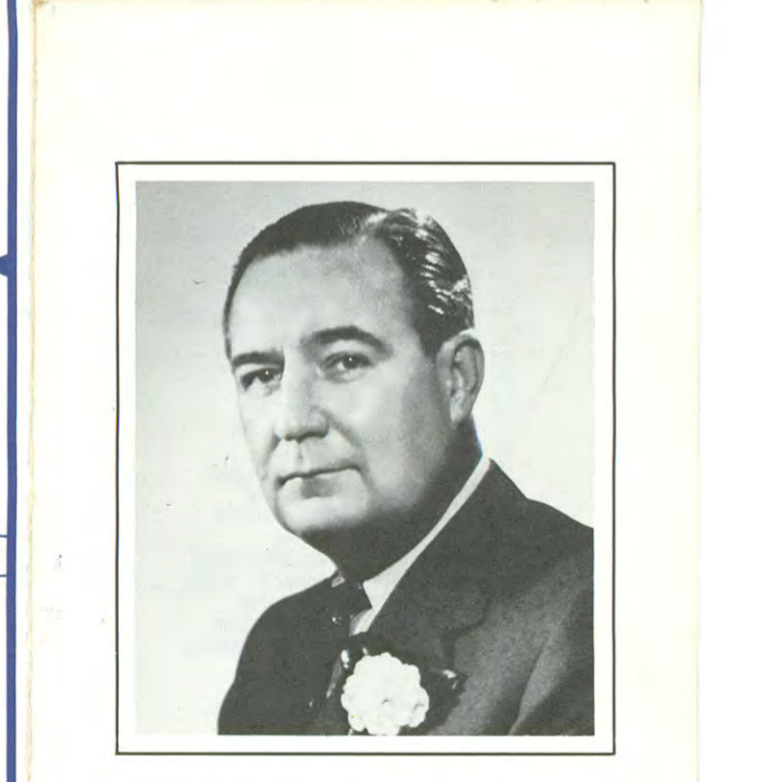


1960 Highway Maps

MISSOURI
WELCOME TO MISSOURI



MISSOURI STATE HIGHWAY COMMISSION
1960 MISSOURI HIGHWAY MAP



EXECUTIVE OFFICE
State of Missouri
Jefferson City

TO THE USERS OF MISSOURI HIGHWAYS
I am sure I speak for all Missourians when I say, WELCOME TO OUR STATE! Missouri has many fine points of interest—beautiful lakes, excellent State Parks and many historic sites. "Drive Carefully" is a good slogan to use when traveling in Missouri. Go slow enough to visit with some of our people. Stop long enough here and there to become acquainted and avail yourselves of our mid-west hospitality. Again, WELCOME—we hope you will come back again, soon.

James T. Blair, Jr.
Governor of Missouri

STATE HIGHWAY COMMISSION

Main Office Jefferson City
Leo A. Fisher, Chairman
W. M. Robertson, Vice-Chairman
A. D. Sappington, Member
Henry D. Bradley, Member
T. R. Beveridge, Ex-Officio

DISTRICT OFFICES
1 St. Joseph
2 Macon
3 Hannibal
4 Kansas City
5 Jefferson City
6 Kirkswood
7 Joplin
8 Springfield
9 Willow Springs
10 Sikeston

DISTRICT ENGINEERS
L. F. Beckett
B. F. Leslie
G. E. Wolf
M. J. Snider
F. G. Parrish
R. A. Currie
W. J. Eddleman
D. B. Jenkins
R. J. Erin
M. S. Grwin

STATE HIGHWAY PATROL

General Headquarters Jefferson City
COL. HUGH H. WAGGONER, Superintendent
TROOP HEADQUARTERS OFFICER IN CHARGE
Troop A, Lee's Summit
Troop B, Macon
Troop C, Kirkswood
Troop D, Springfield
Troop E, Poplar Bluff
Troop F, Jefferson City
Troop G, Willow Springs
Troop H, St. Joseph
Troop I, Rolla

HIGHWAY INFORMATION CENTERS

For detailed information concerning the condition of highways, call or see the nearest highway department office or highway patrol troop headquarters.

HIGHWAY DEPARTMENT OFFICES
Address Telephone
Jefferson City, Highway Building 6-3121

DISTRICT OFFICES
Hannibal, McManis Avenue 2744
Jefferson City, Route US 50 West 6-2135
Joplin, 410 Range Line Road, Rte. US 71 MA 3-2794
Kansas City, 5117 East 31st Street WA 1-7105
Kirkswood, 322 South Kirkwood Road YO 6-3800
Macon, Rte. US 63 ES 1-2177
St. Joseph, North Jct. Rtes. US 71 & US 169 AD 2-2322
Sikeston, Rte. US 61 North of Rte. US 60 GR 1-4170
Springfield, 1923 North Waller Avenue UN 4-2344
Willow Springs, Rte. US 63 North UN 4-2344

URBAN AREA OFFICE
Richmond Heights, 1423 Big Bend Road MI 7-4303

HIGHWAY PATROL TROOP HEADQUARTERS
GENERAL HEADQUARTERS
Jefferson City, High & Broadway 6-7141
TROOP HEADQUARTERS
Jefferson City, Rte. US 50 East 6-7141
Kirkswood, Rte. US 40 & Ballas Road HE 2-2661
Lee's Summit, Rte. US 50 East BR 1-1407
Macon, Rte. US 36 West of Rte. US 63 EL 1-2132
Poplar Bluff, Rte. US 67 South SU 5-2575
Rolla, Highway 64 EM 4-1215
St. Joseph, North Jct. Rtes. US 71 & US 169 AD 3-0291
Springfield, Rtes. US 63 & US 166 West UN 4-1923
Willow Springs, Rte. US 60 Northwest UN 110

LEGEND

INTERSTATE, U.S. HIGHWAYS AND MAJOR STATE HIGHWAYS
 - Interstate
 - U.S. Highway
 - Major State Highway

CONVENTION OR BUSINESS ROUTES
 - Convention or Business Route
 - All-Weather Road—Good Surface
 - Highway Under Construction

SUPPLEMENTARY STATE HIGHWAYS
 - Convention or Business Route
 - All-Weather Road—Good Surface
 - Highway Under Construction

AS SHOWN ON MAP AS MARKED ON ROAD
 - Interstate
 - Other U.S. Routes
 - State Route
 - Supplementary Route

CITY SYMBOLS
 - Full badge
 - Part badge
 - State Patrol Office
 - Sheriff's Office
 - Point of Interest
 - Historical Marker
 - ACCUMULATED MILEAGES AND MILEAGES BETWEEN JUNCTIONS

SCALE IN MILES
 1 INCH EQUALS APPROXIMATELY 13.1 MILES

MISSOURI 1960 HIGHWAY MAP
issued by
 Missouri State Highway Commission

