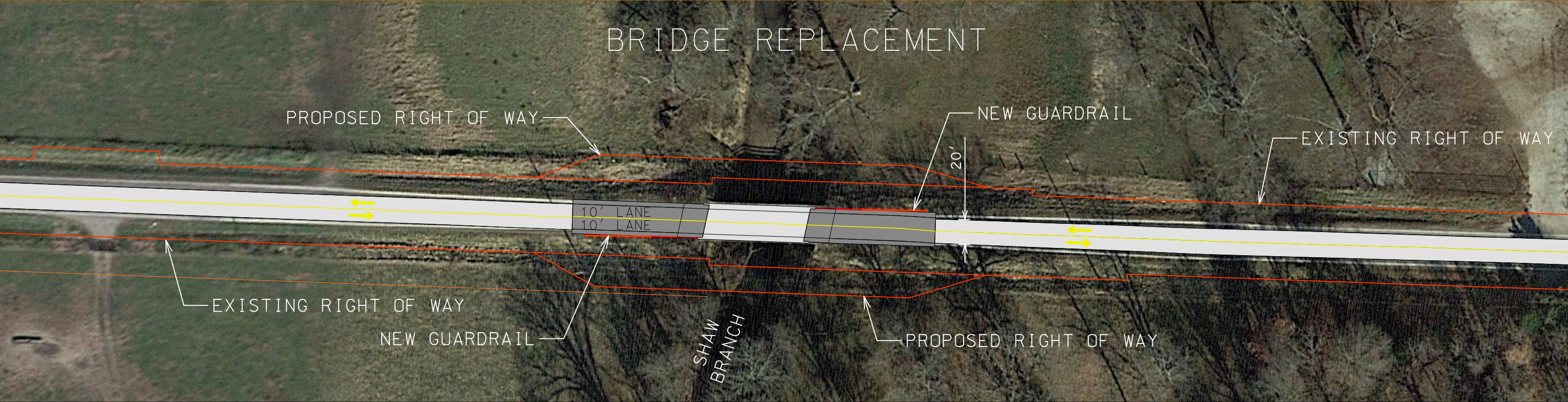
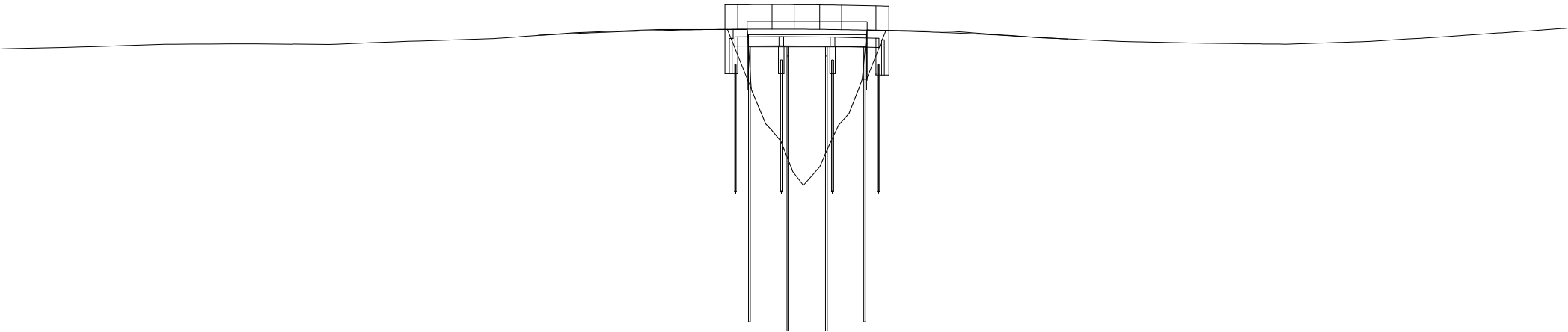


BRIDGE REPLACEMENT



PLAN VIEW



ELEVATION VIEW

NOT TO SCALE

EXISTING BRIDGE T0033

- BUILT IN 1935
- WIDTH 20'
- LENGTH 66'

NEW BRIDGE A8611

- BUILD IN 2019
- LENGTH 82'
- WIDTH 26'
- NEW PAVEMENT LEADING UP TO THE BRIDGE WILL BE APPROX. 106' LONG ON THE WEST SIDE OF THE BRIDGE AND 102' LONG ON THE EAST SIDE OF THE BRIDGE

J7S0503  
BATES COUNTY

