

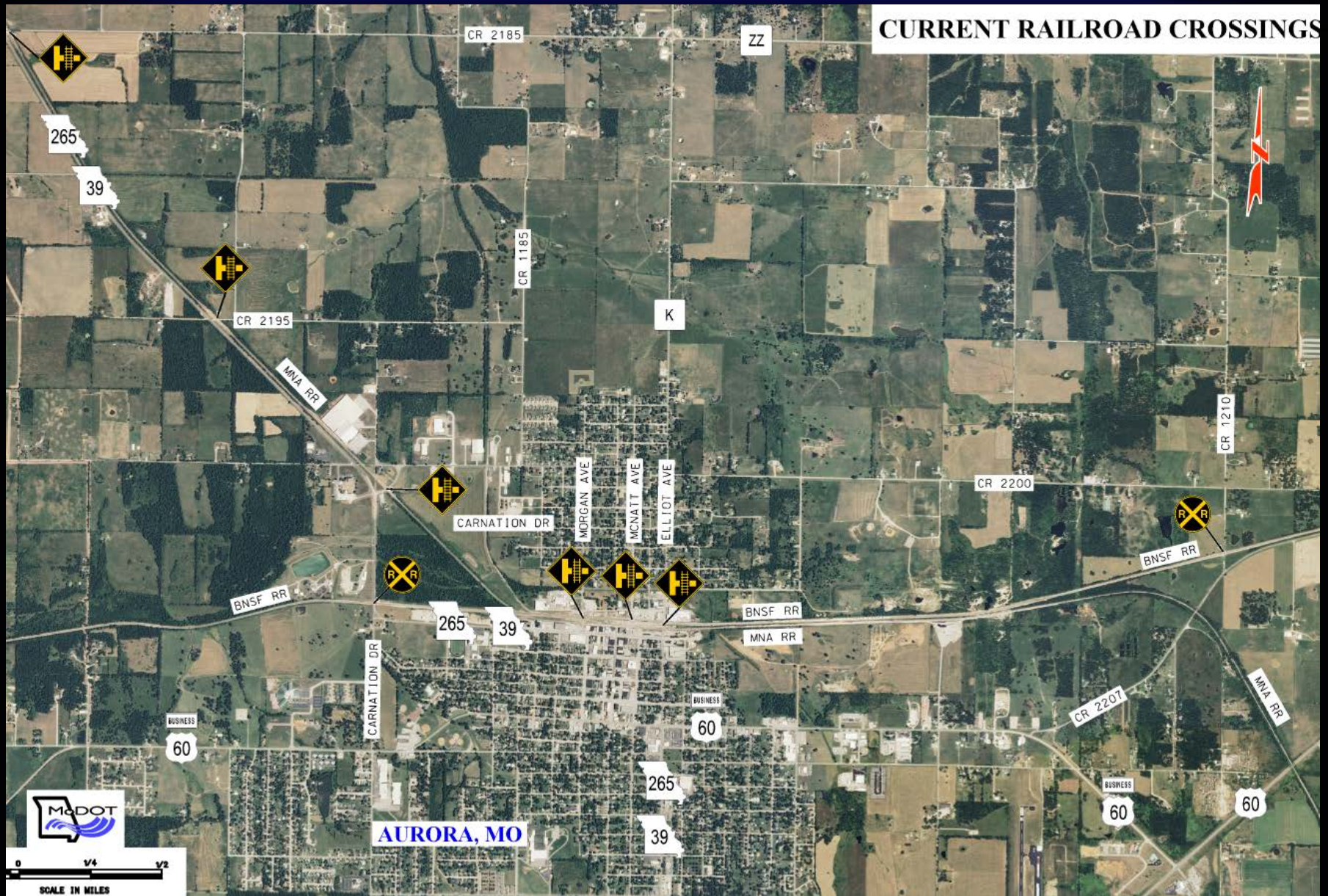
Aurora Railroad Crossing Improvements

Aurora Rotary Club
May 31, 2016

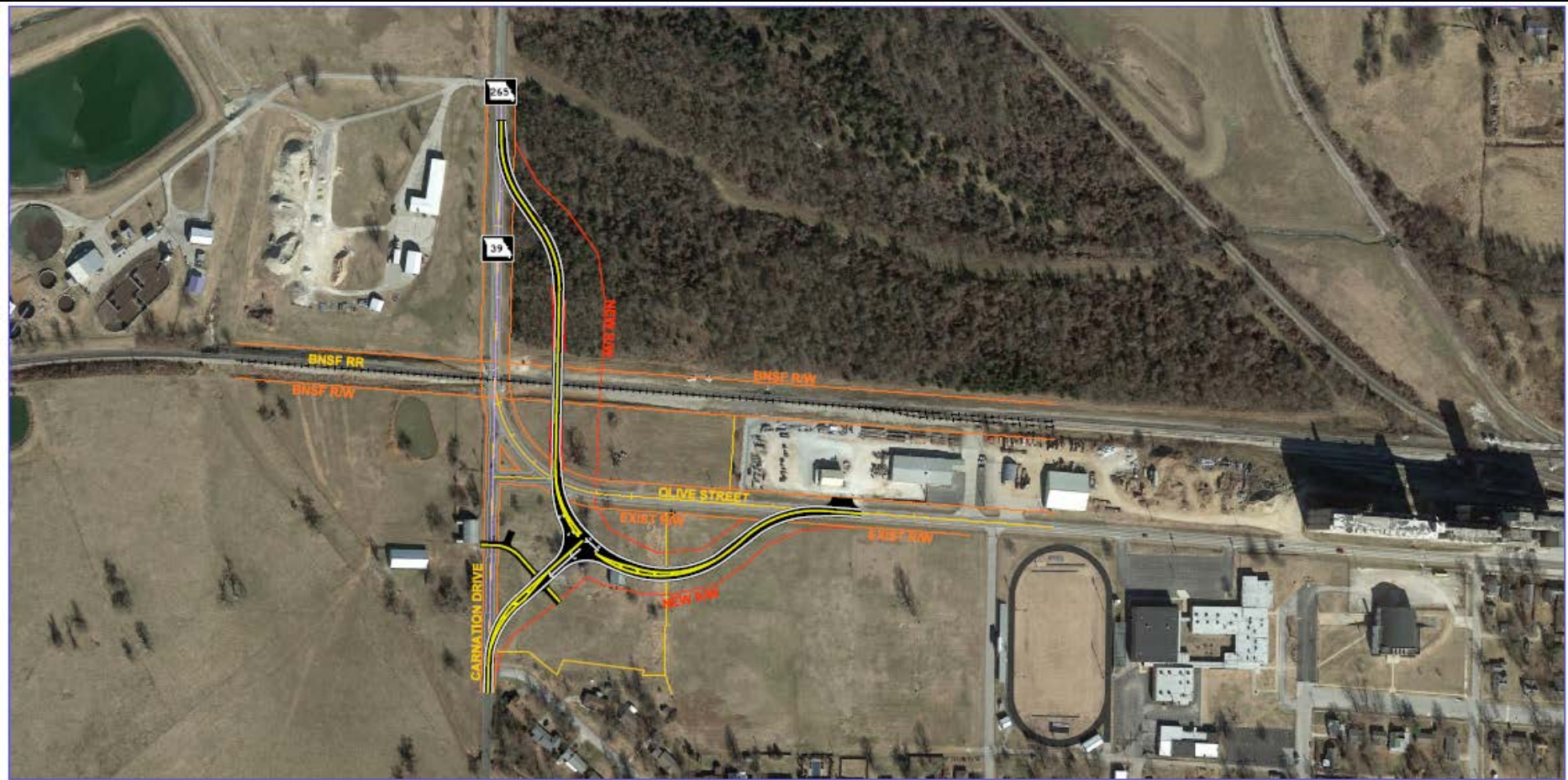
Missouri Department of Transportation
Southwest District



Aurora Railroad Crossings



Route 39 Bridge



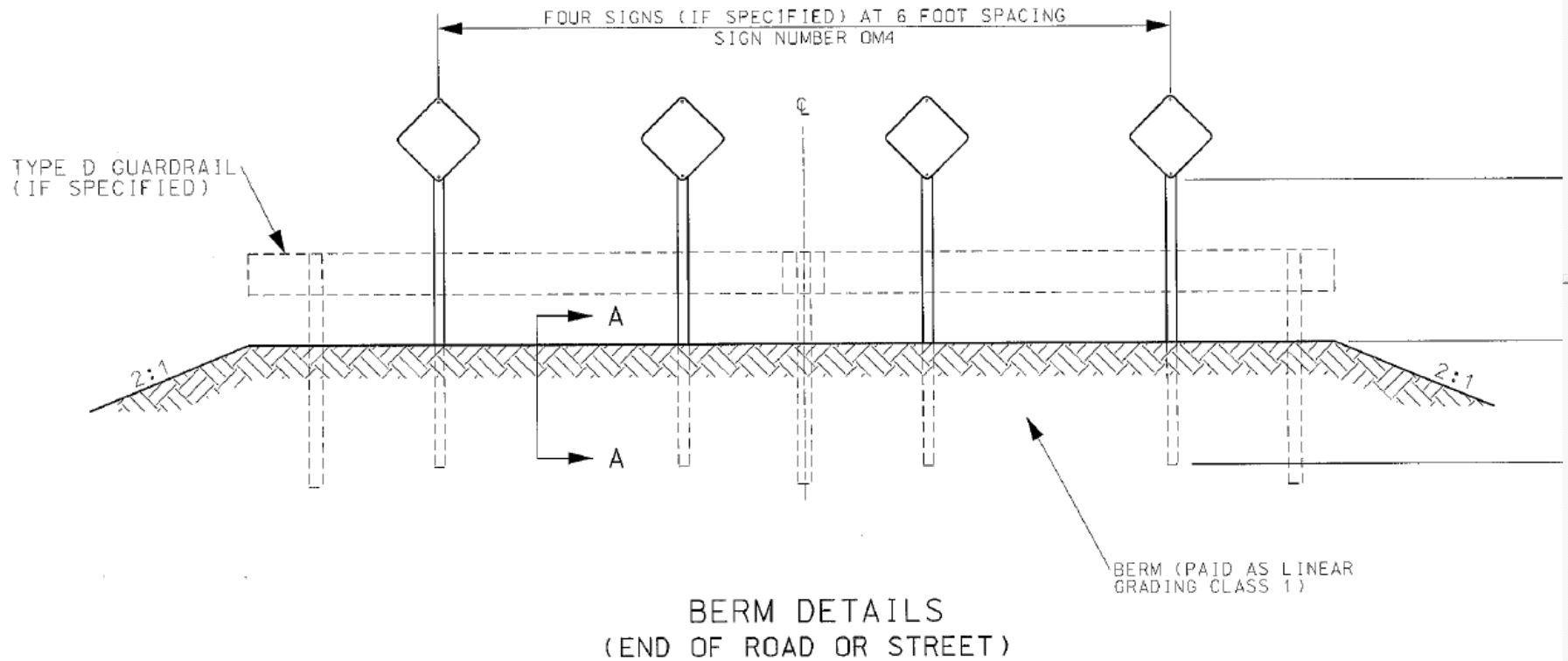
Route 39 Bridge



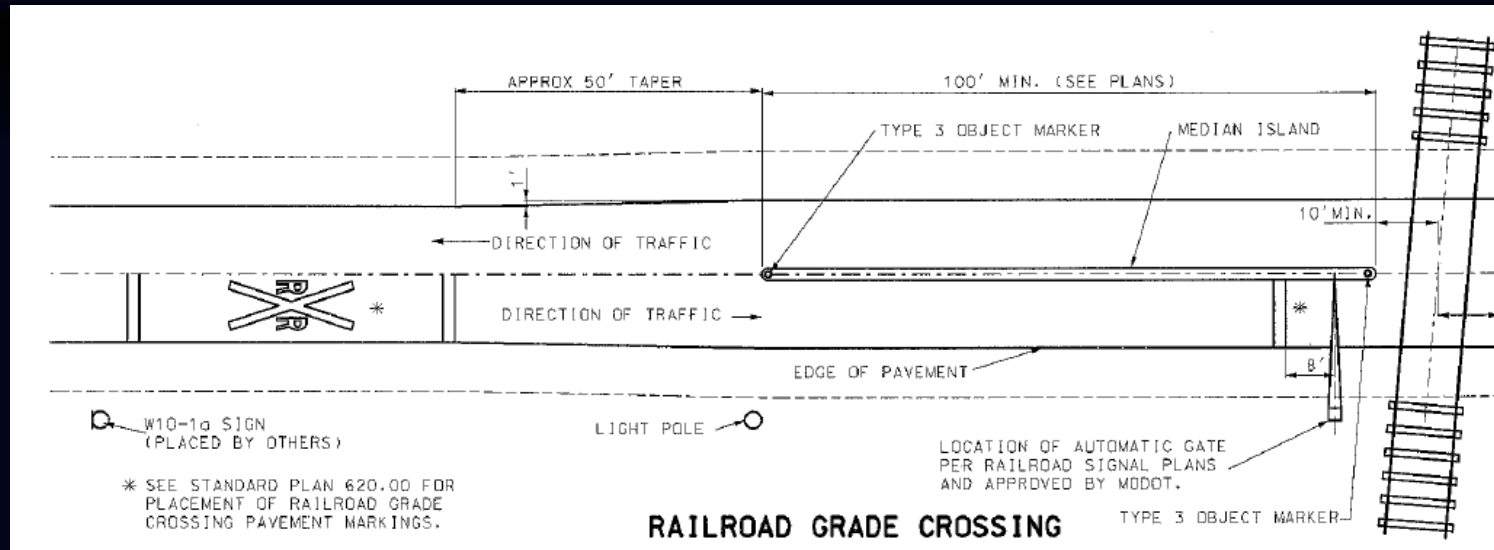
Morgan, McNatt & Route K



Morgan & McNatt Avenue



Route K



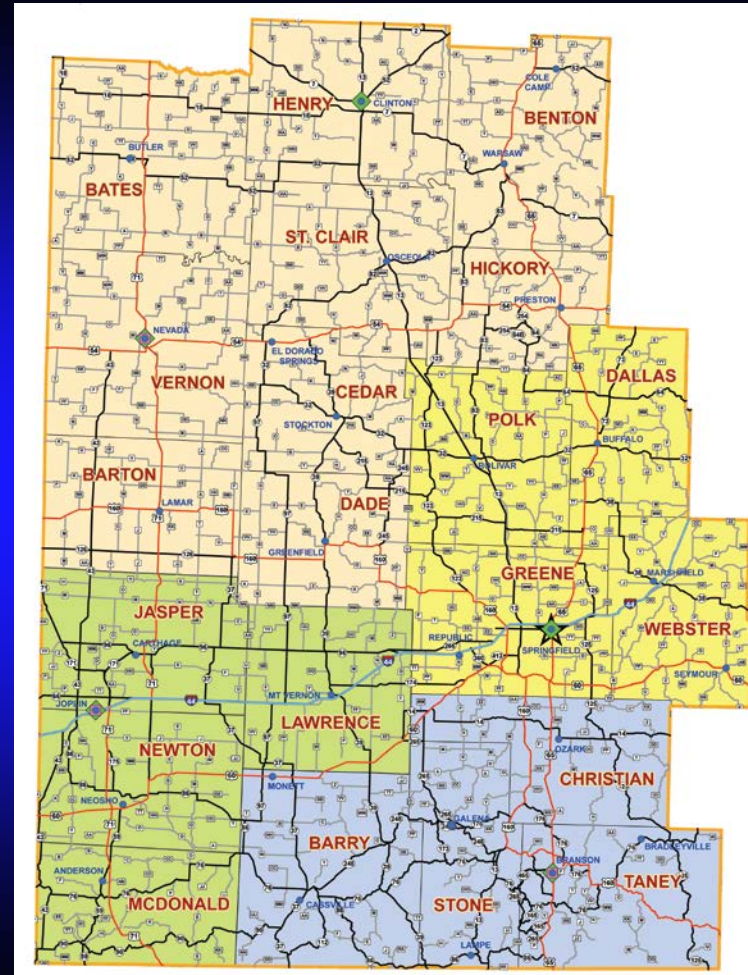
Missouri's Transportation System

- 34,000 miles of roads
- 10,400 bridges.



Southwest District by the Numbers

- 21 counties
- 927,000 residents
- 13,000 square miles
- 6,533 miles to maintain
- 1,850 bridges



Missouri continues to have a long-term insufficient transportation funding challenge.

7th BUT



Largest system in the U.S.

Nationally in revenue spent per mile.

Improved State Economy

- Lower gas prices
- More miles driven / more fuel consumed
- Increased vehicle purchases

The Result:

- Generated an increase in revenue
- Allows us to help match federal funds

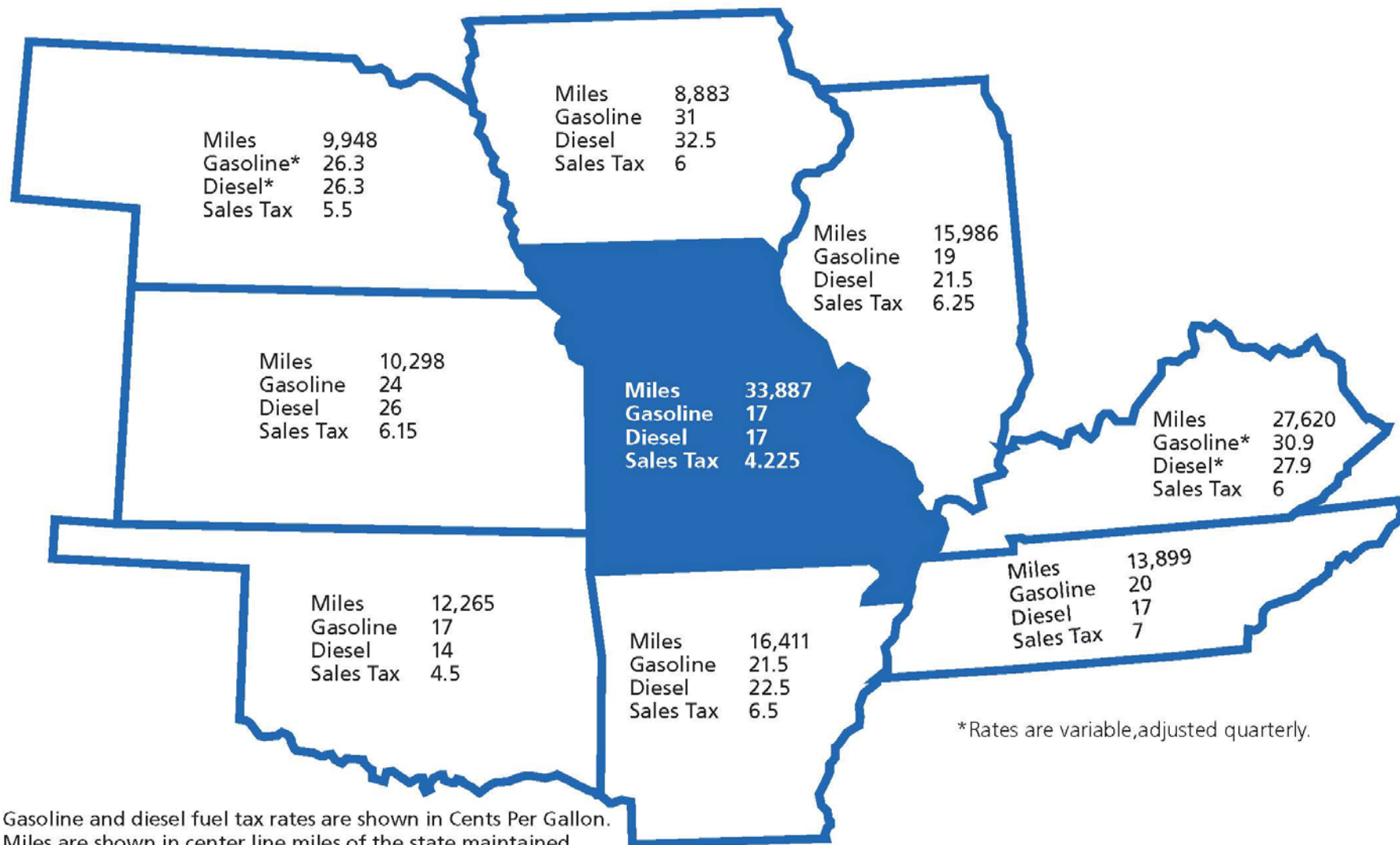
Fixing America's Surface Transportation

FAST ACT

- Five-year funded federal bill
- Reduces reimbursement risk
- Increase in available federal funding
- Allows for long-term planning
- MoDOT will spend down cash balance to help match federal funds
- MoDOT is also “federalizing” some maintenance activities

Missouri Lags Behind

Missouri has a lower fuel tax rate than almost any of its neighbors.
Yet it has a larger state-maintained highway system than all of them.



Gasoline and diesel fuel tax rates are shown in Cents Per Gallon.
Miles are shown in center line miles of the state maintained highway system.

Transportation Dollar\$

A new tool on MoDOT's website will help you see how much you contribute to Transportation Funding each year in state and federal taxes, and how that amount is invested.

Maintaining What We Have	\$89.02
Delivering Programs and Projects	\$18.74
Pass Through Federal Funds to Cities and Counties	\$10.93
Debt Service on Outstanding Bonds	\$20.30
Other State Agencies (MO Highway Patrol & Dept. of Revenue)	\$17.18
Annual Revenue Invested by MoDOT	\$156.18

Your Contribution To Transportation Funding Last Year

Enter your mileage and vehicle miles per gallon (mpg) to estimate how much you contribute annually in state and federal taxes and fees to Missouri's transportation system.

How many miles did you drive in Missouri last year?

What is your vehicle's average miles per gallon?

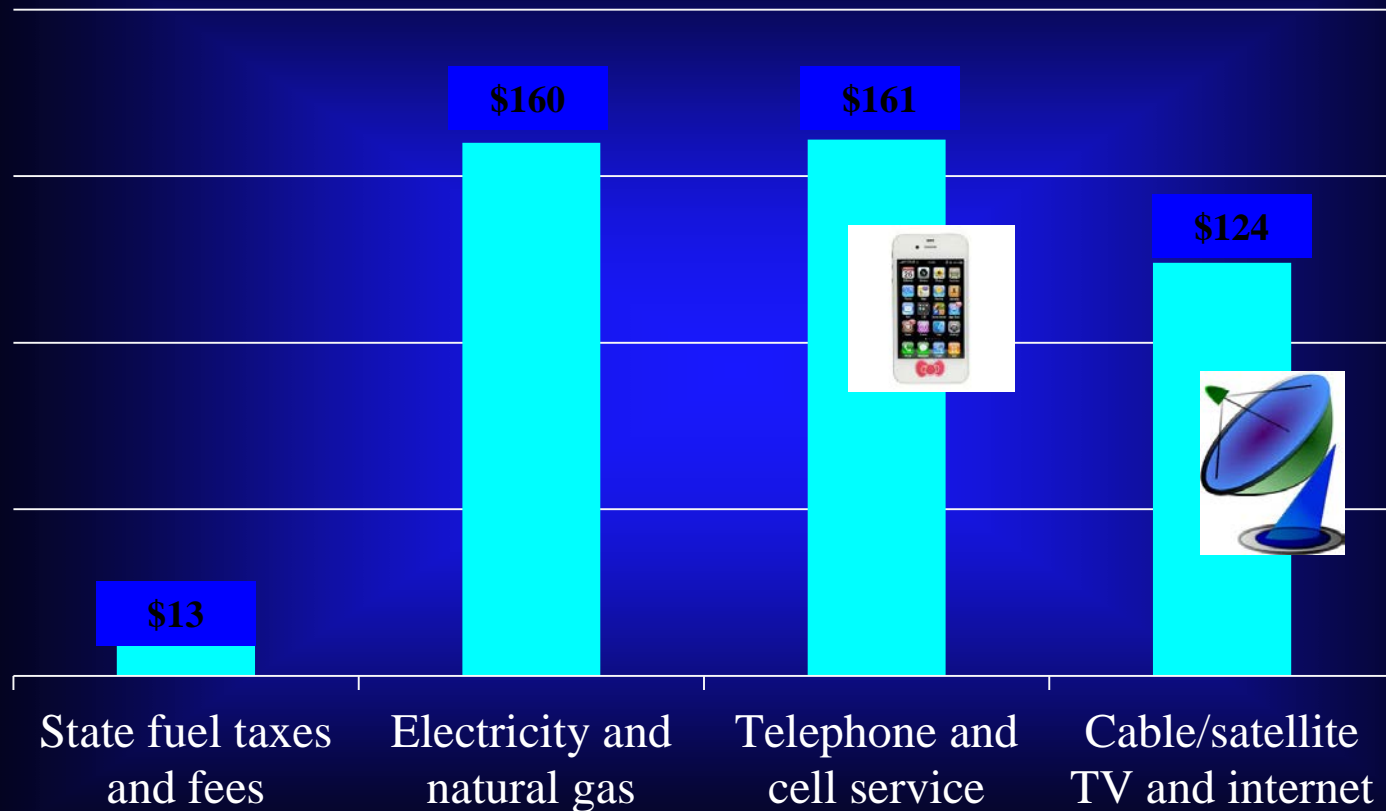
Does your vehicle use diesel fuel? Check if Yes ☐

Did you purchase a motor vehicle last year? Check if Yes ☐

Calculate

What **do** Missourians pay for transportation?

Average Household Expenses





MoDOT Looks Forward

- **Smart Highways**
- **Truck Platooning**
- **Truck Ferries**
- **Data/Communication**
- **Funding**
- **Alternate Travel**
- **Energy**
- **Advertising**

Questions or Comments

Kristi Bachman, P.E.

Transportation Project Manager

(417) 829-8040

Email: Kristi.Bachman@modot.mo.gov