

How Does MoDOT Protect Water Quality?

■ Construction

BMPs (Best Management Practices)

- Vegetative buffers settle and capture sediment
- Silt fence to keep sediment on site
- Check dams to slow water flow and settle sediment
- Filter bags to remove sediment

■ Seed and Mulch Ground Disturbance

■ Limiting the Amount of Ground Disturbance Exposed to Stormwater

■ Post-Construction Stormwater Management

- Detention basins and grassed swales catch sediment and pollutants
- Reduction of salt usage, using beet juice for deicing roads



Energy Dissipator

For More Information

Links

[Environmental Protection Agency
www.epa.gov/npdes/stormwater](http://www.epa.gov/npdes/stormwater)

[Missouri Department of Natural Resources
www.dnr.mo.gov/env/wpp/stormwater](http://www.dnr.mo.gov/env/wpp/stormwater)

[MoDOT's Engineering Policy Guide
http://epg.modot.org](http://epg.modot.org)

Email Us

Stormwater@modot.mo.gov

Report A Stormwater Concern

<http://www.modot.org/asp/repair.htm>



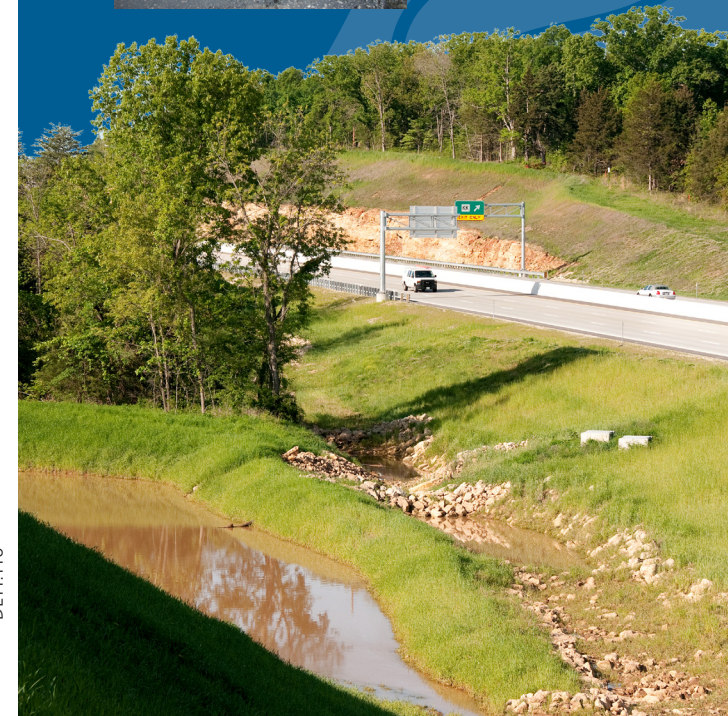
The dangers of littering



MoDOT Design Division
Environmental Section
601 West Main Street
Jefferson City, MO 65101
573-526-4778

Meeting the NPDES MS4 Permit Requirement

MoDOT and Stormwater Pollution Prevention



What Is Stormwater?

Stormwater is increased surface water due to heavy rains or snow storms.

Stormwater flows across roofs, lawns and pavement and is carried to streams by culverts, pipes and ditches.



What Makes Stormwater Harmful?

Stormwater picks up litter, pesticides, lawn chemicals, pet feces and exposed soil on its way to streams used for fishing, swimming and drinking.

Polluted storm water is harmful to people and animals.

What is Non-Stormwater Discharge?

A non-stormwater discharge is anything the storm sewers carry that is NOT rainwater or snow melt.

An illicit discharge is any discharge that is not composed entirely of storm water and makes its way to a stream. Examples of an illicit discharge include:

- Sanitary Wastewater
- Untreated Sewage
- Car Wash Wastewaters
- Improper Oil Disposal
- Laundry Wastewaters
- Auto and Household Toxics
- Sediment or Soil



Evidence of an Illicit Discharge

What Can You Do To Reduce Stormwater Pollution?

- Never dump anything down the storm drain
- Dispose of pet waste in a trash can
- Report spills
- Take used oil to an auto shop
- Pick up litter



Why Does MoDOT Care About Stormwater?

1. It affects construction and maintenance of roadways.
2. Road surfaces can carry pollutants from vehicles onto MoDOT right of way.
3. MoDOT tracks and reports illicit discharges as part of its stormwater permit.