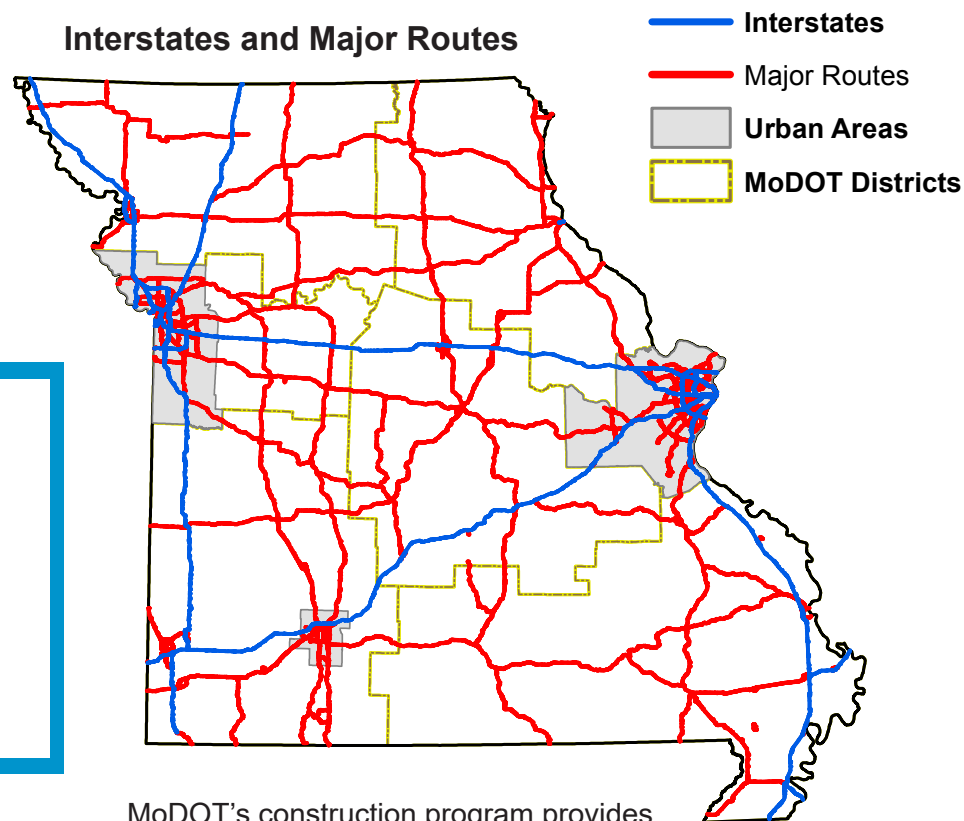


The Current Condition of MISSOURI TRANSPORTATION

What is the Current Condition of Missouri Transportation?

Last year, 51.4 billion miles were traveled on the state highway system. The majority of travel occurs on interstates and major routes. Interstates and major routes include just 5,543 miles of the 33,838 miles of highway in Missouri, but account for 76 percent of the travel. Currently, 92 percent of these routes are in good condition as MoDOT has focused on improving and maintaining these routes over the last decade.

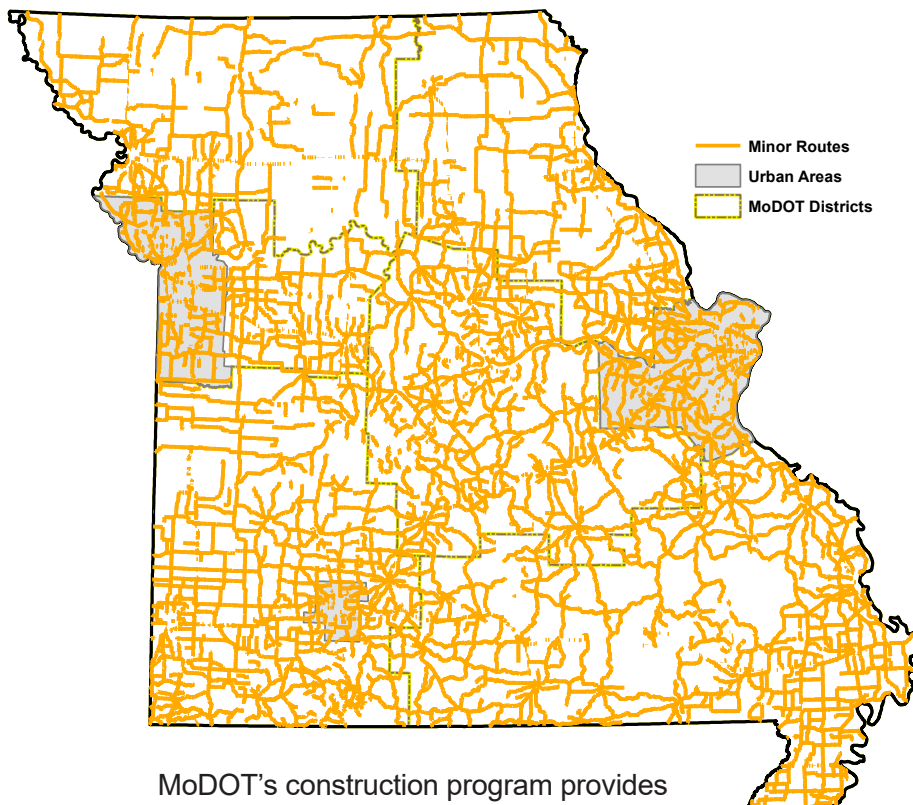


39.3 billion miles were driven on interstates and major routes; therefore, on average 7.1 million vehicles traveled each mile.

MoDOT's construction program provides the funding to maintain these routes.

Missouri's minor routes make up the largest group of state highways, accounting for 17,125 miles – just over one-half of the entire state highway system. About 22 percent of all state travel occurs on these routes. Currently, 80 percent of these routes are in good condition.

Minor Routes



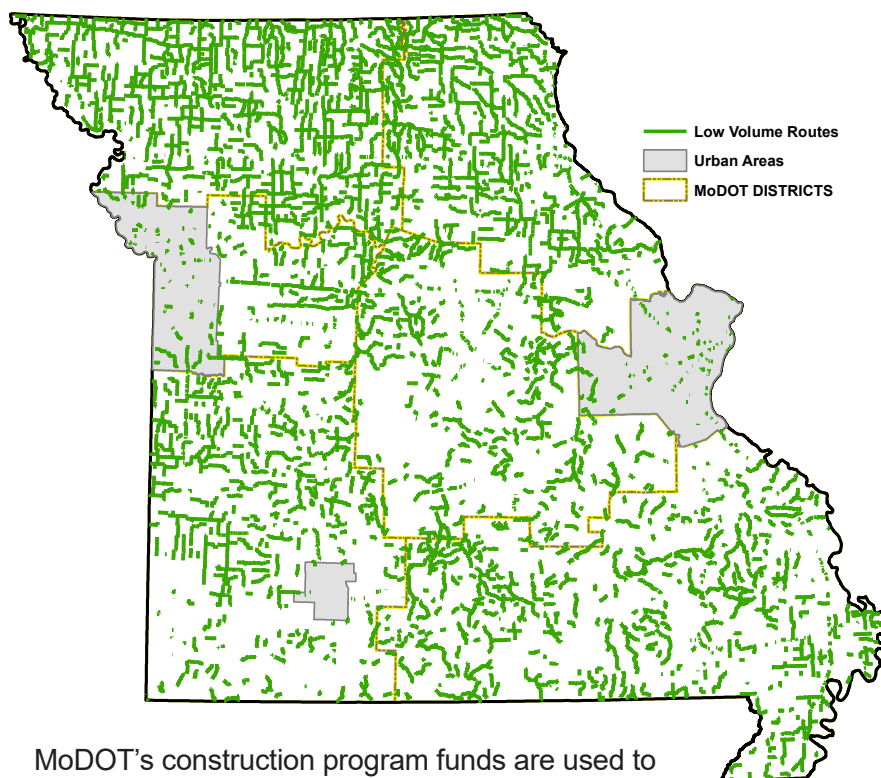
MoDOT's construction program provides the funding to maintain these routes.

11.2 billion miles were driven on minor routes; therefore, on average 654,000 vehicles traveled each mile.

The Current Condition of MISSOURI TRANSPORTATION

The final tier of Missouri highways is low volume routes. Each of these routes carry less than 400 vehicles per day and primarily serve local transportation needs. Missouri has 11,170 miles of low volume routes, accounting for about one-third of the state system. Travel on these routes is less than two percent of all state highway travel. Currently, 74 percent of these routes are in good condition.

Low Volume Routes

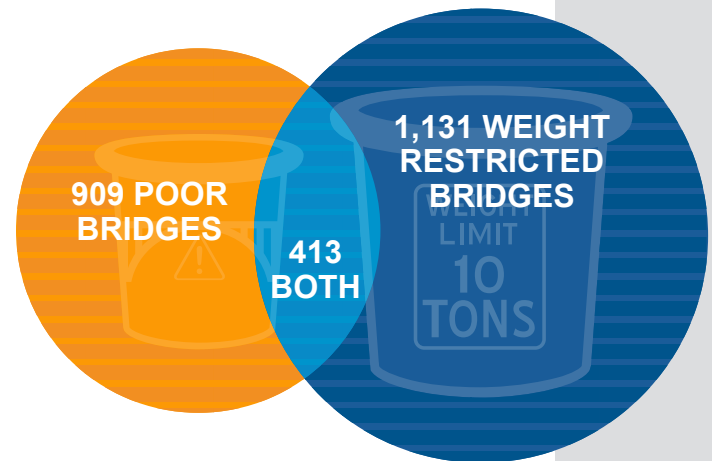


0.9 billion miles were driven on low volume routes; therefore, on average 81,000 vehicles traveled each mile.

MoDOT's construction program funds are used to maintain the bridges on these routes; however, the pavements on these routes are maintained using MoDOT's maintenance funds.

The Current Condition of MISSOURI TRANSPORTATION

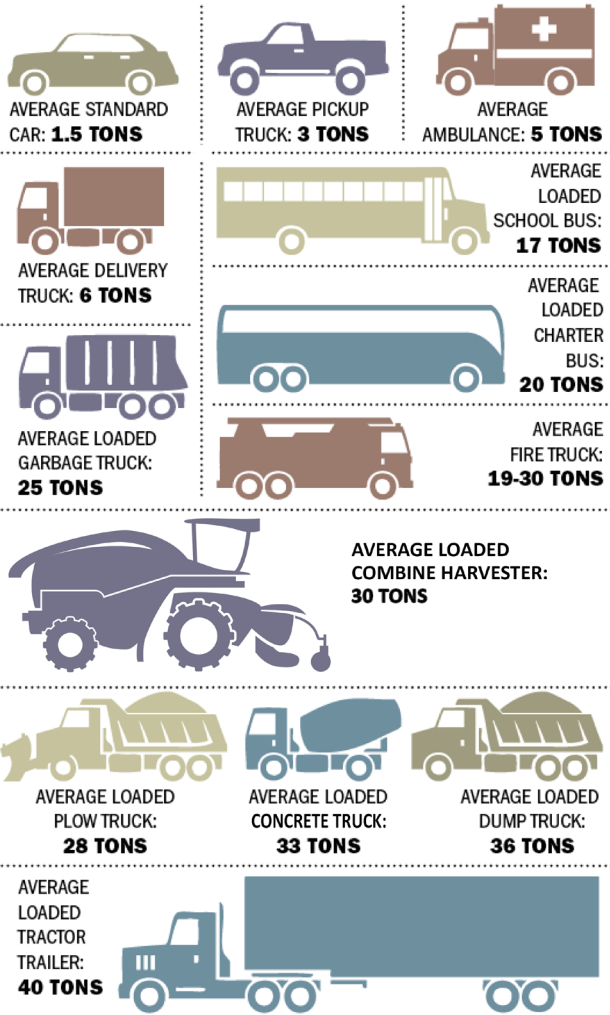
In addition to the huge network of highways, Missouri has 10,384 bridges of varying sizes, including 208 major bridges that are longer than 1,000 feet, or about the length of three football fields. Currently, 909 bridges are in poor condition. MoDOT inspects these bridges on a regular basis to ensure they are safe for travelers. If a bridge is unsafe, it is closed until repairs can be made. Missouri also has 1,131 weight-restricted bridges, with 413 of them also in poor condition.



Totals	Typical Bridges	Major Bridges	All Bridges
Number	10,176	208	10,384
Area (square feet)	64,256,193	23,197,143	87,453,336
Average Age (years)	48.2	37.3	48.0
Weight Restricted	1,090	41	1,131
Area of Weight Restricted	7,242,479	5,682,751	12,925,229
Poor	882	27	909
Area of Poor	5,130,143	3,101,956	8,232,100
Both Poor and Weight Restricted	400	13	413
Area Both Poor and Weight Restricted	1,645,183	1,801,504	3,447,686
Only Poor and Only Weight Restricted	1,572	55	1,627
Area of Only Poor or Only Weight Restricted	10,727,439	6,982,203	17,709,643

Approximate vehicle weights

Lower weight limits for about 1,300 load-posted state bridges:



Source: PennDOT

James Hilston/Post-Gazette

