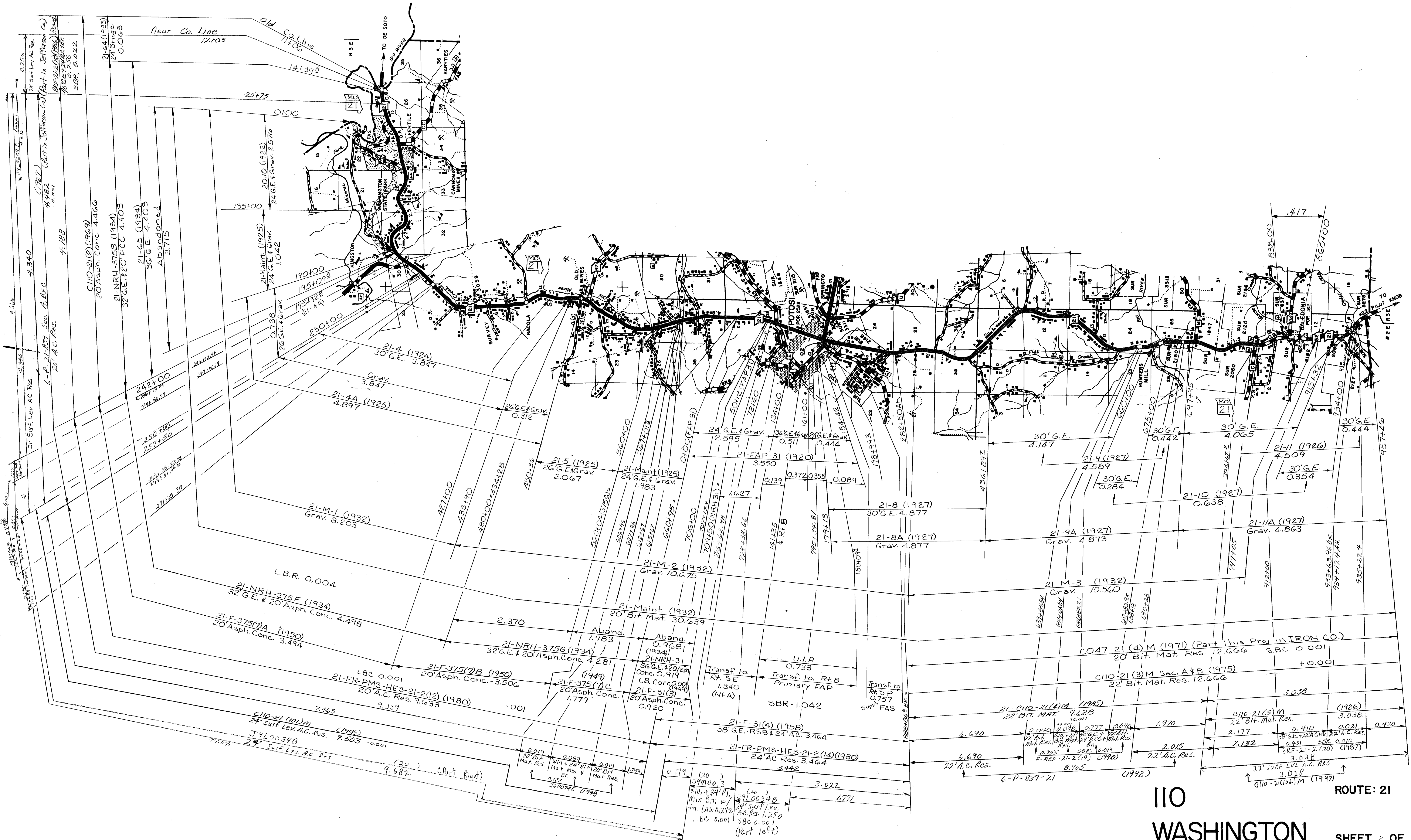


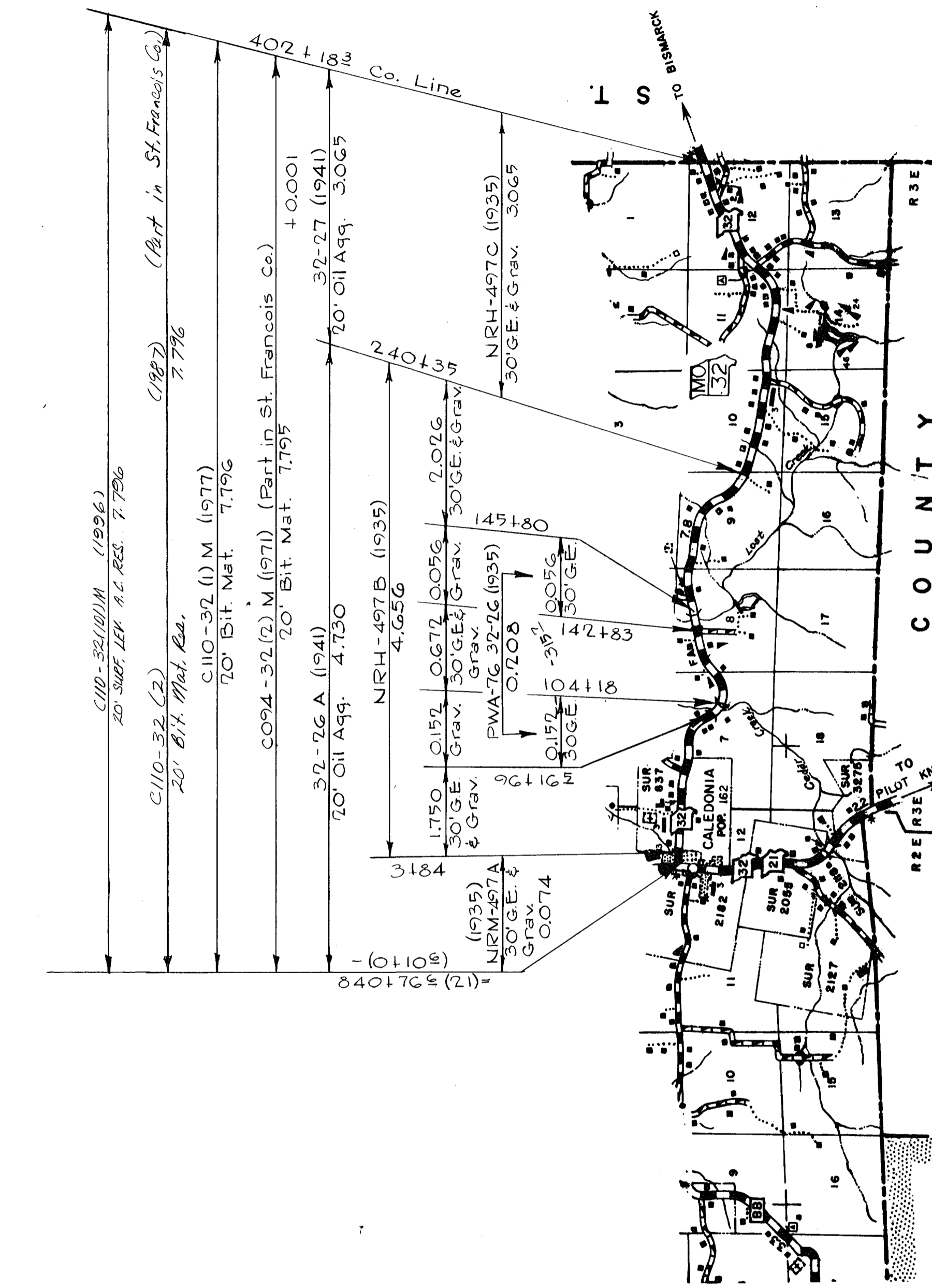
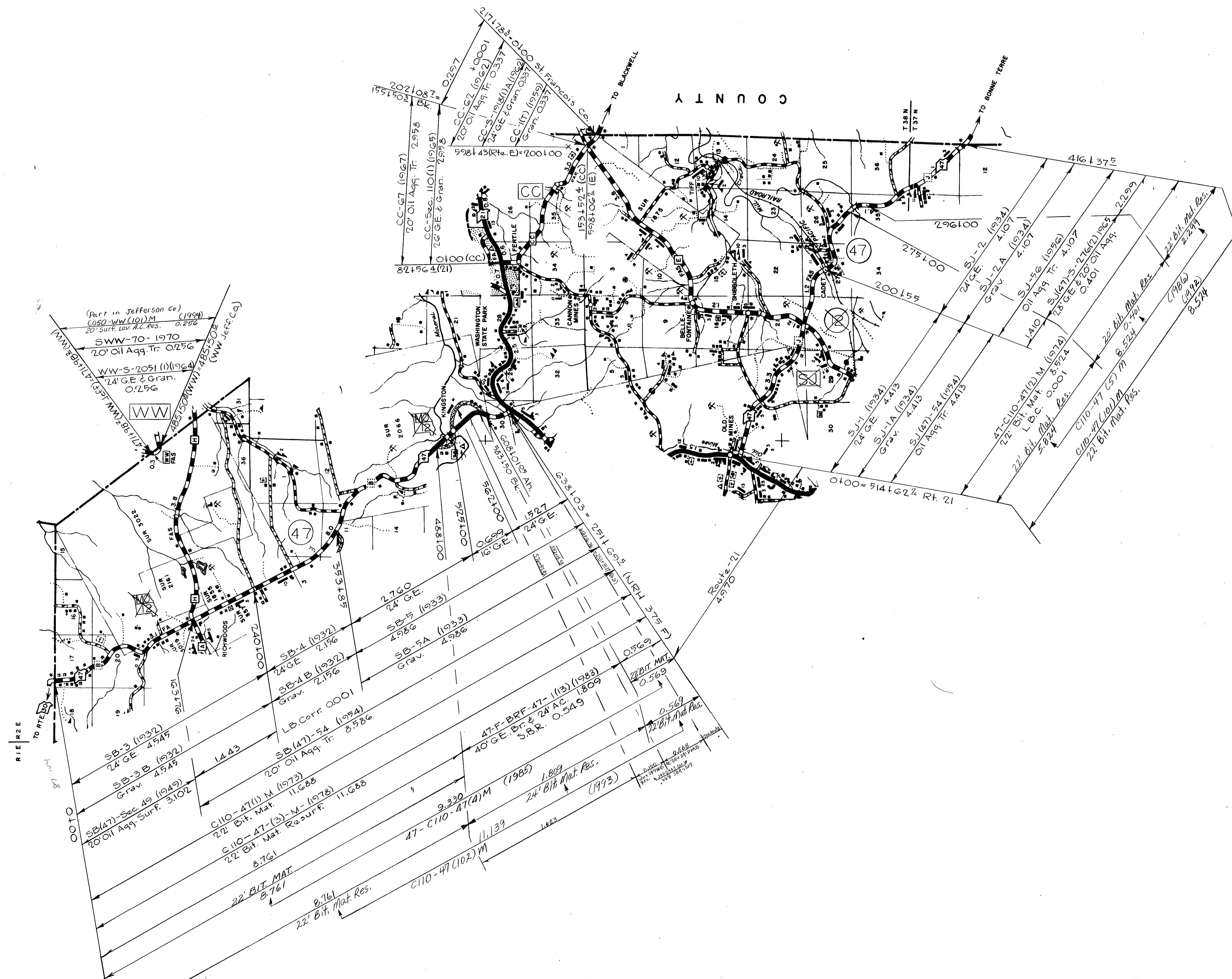


110  
WASHINGTON

ROUTE: 8

SHEET 1 OF 10

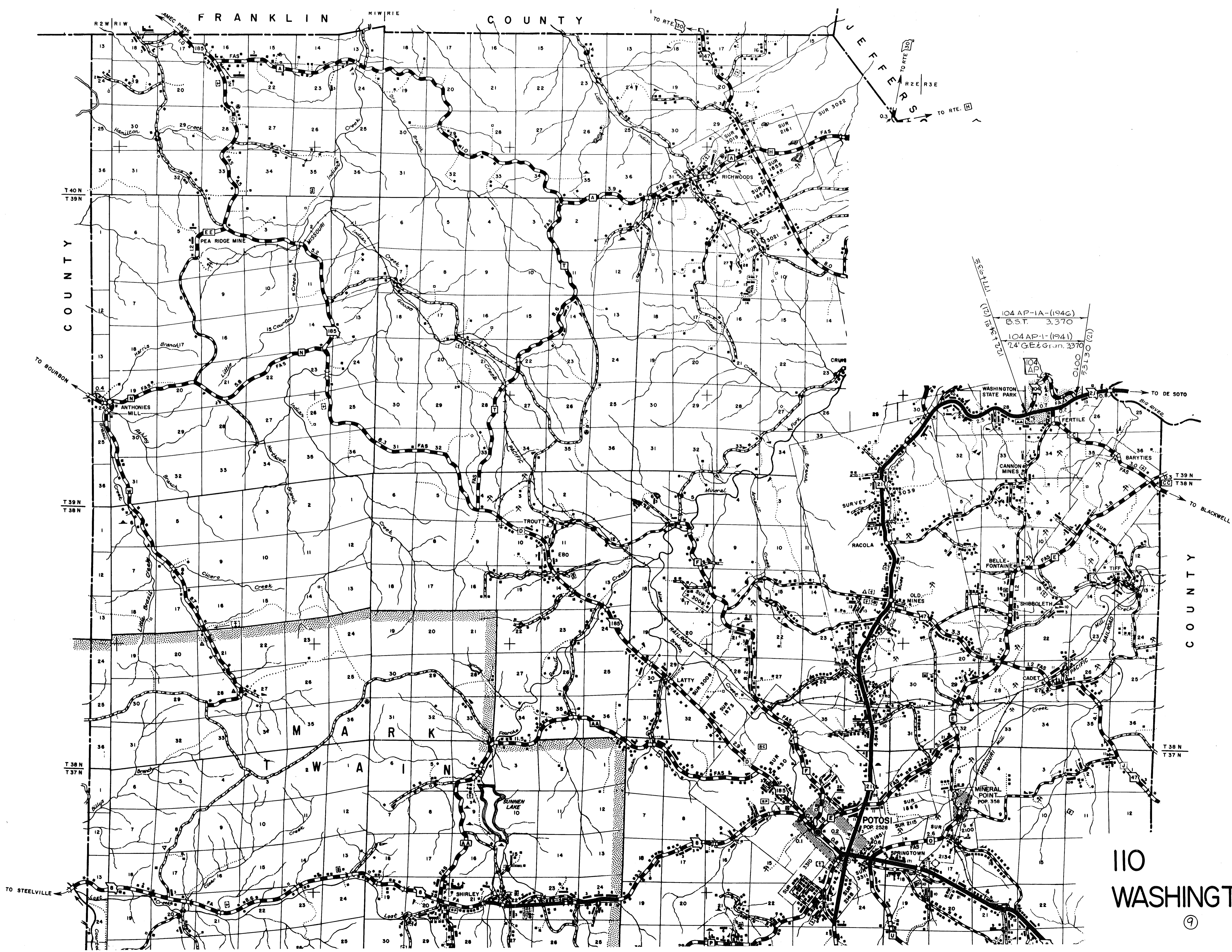




110  
WASHINGTON

ROUTES: 32, 47,  
CC, WW

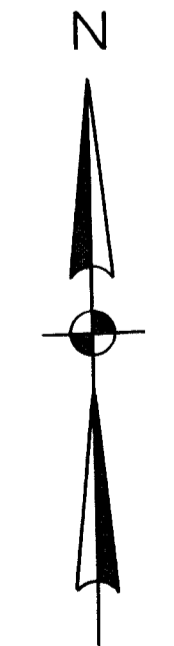
SHEET 3 OF 10

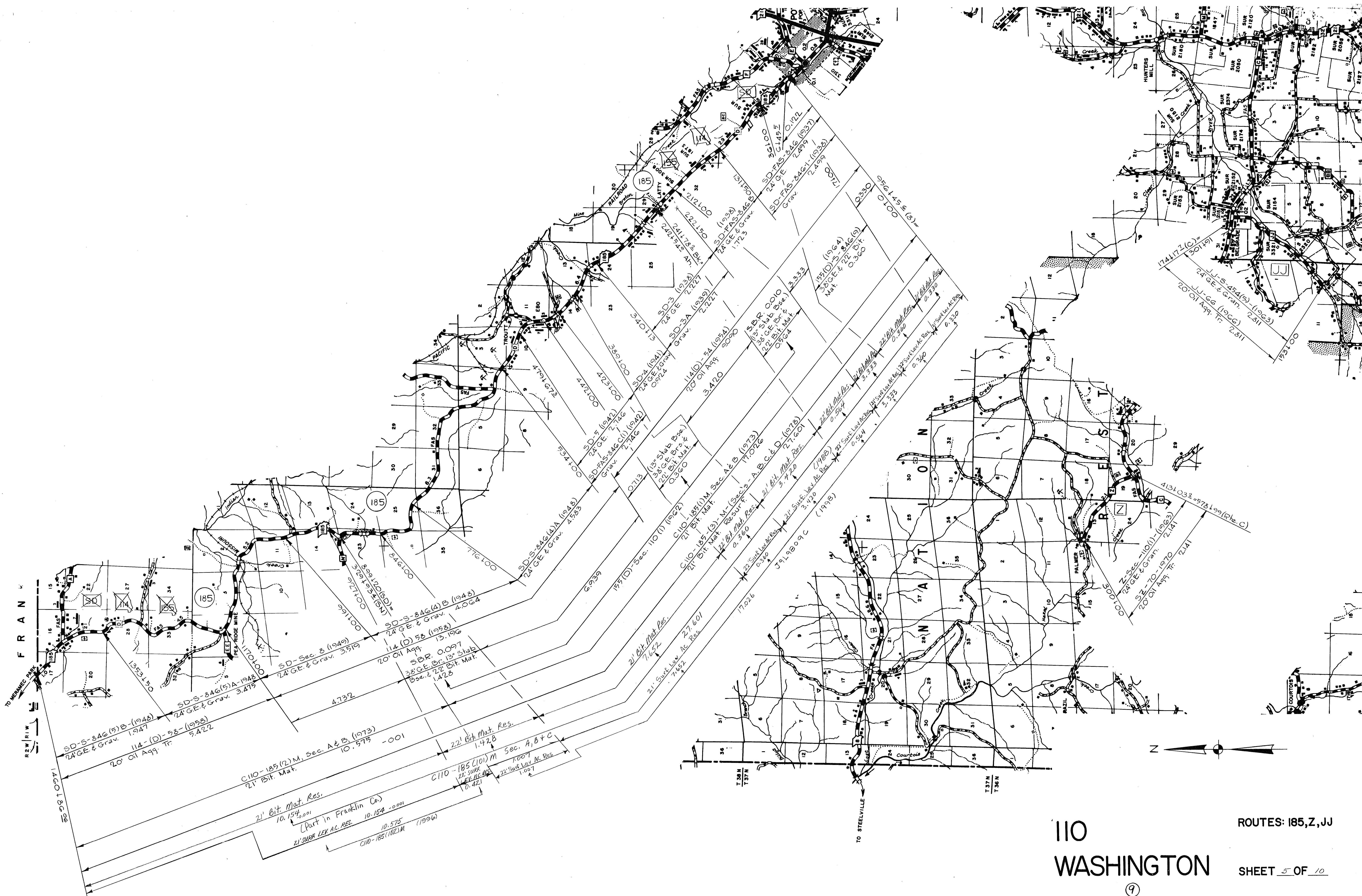


110  
WASHINGTON

ROUTE: 104 (AP)

SHEET 4 OF 10





FRANKLIN

WASHINGTON

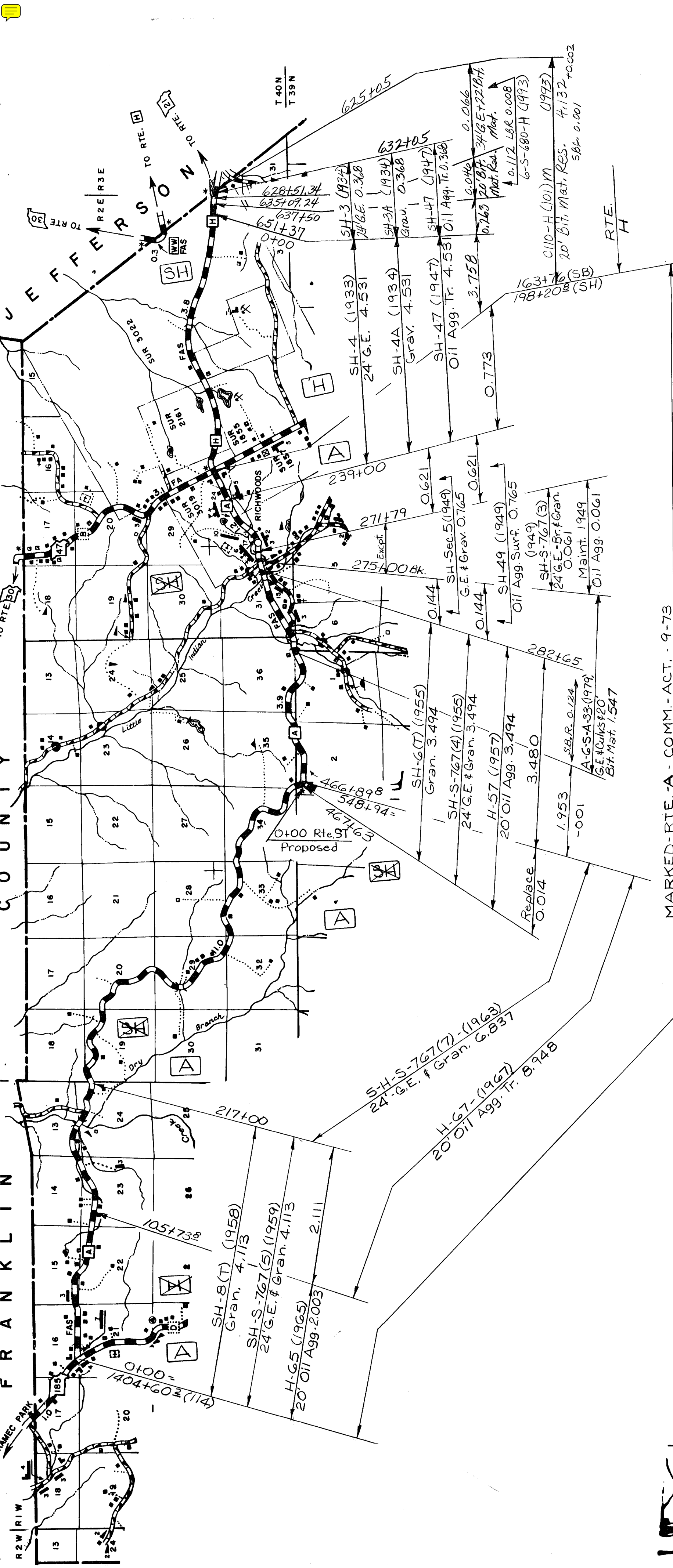


110  
WASHINGTON

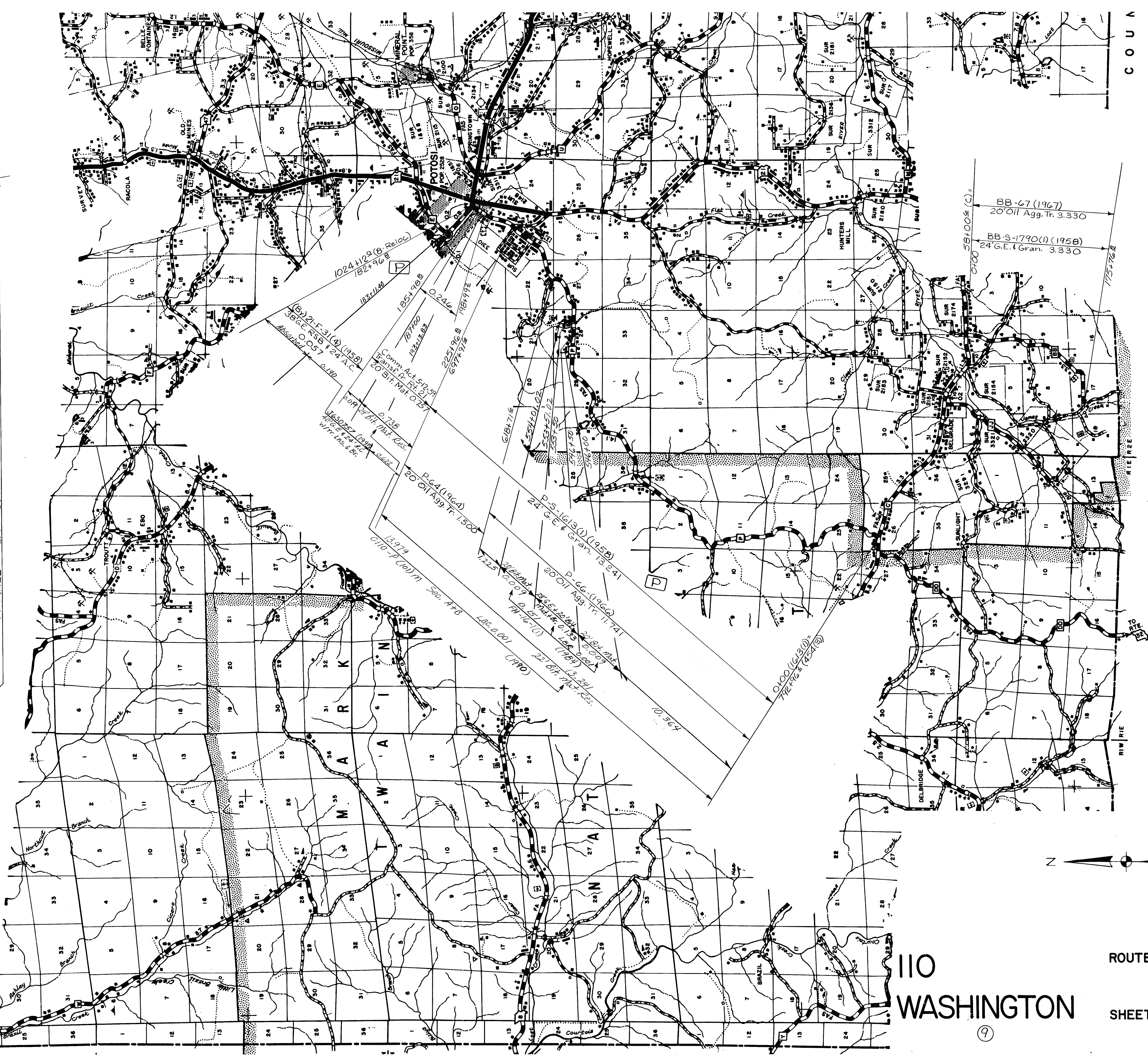
ROUTES: 185, Z, JJ

SHEET 5 OF 10

9



MARKED - RTE. A - COMM. - ACT. - 9-75

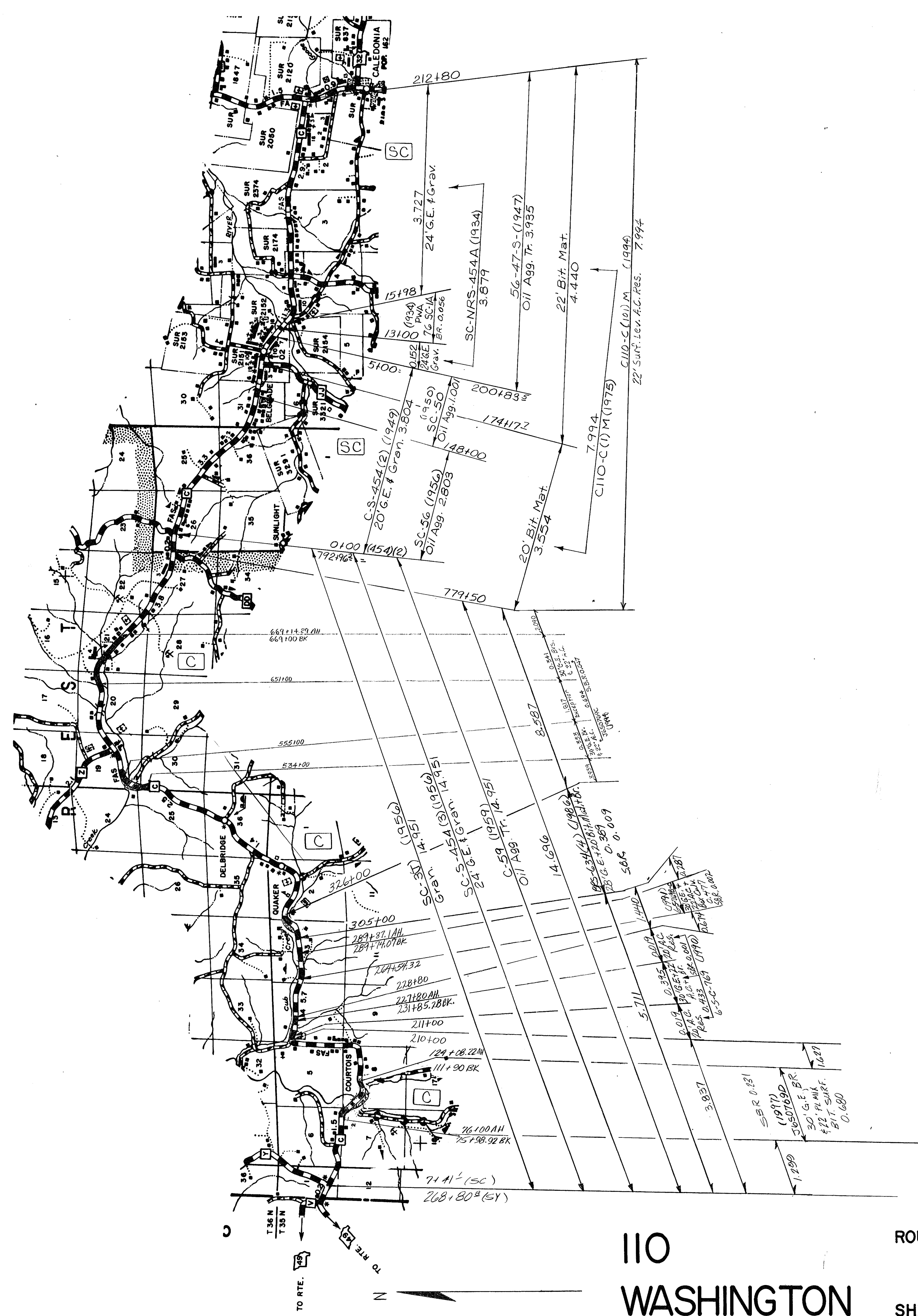
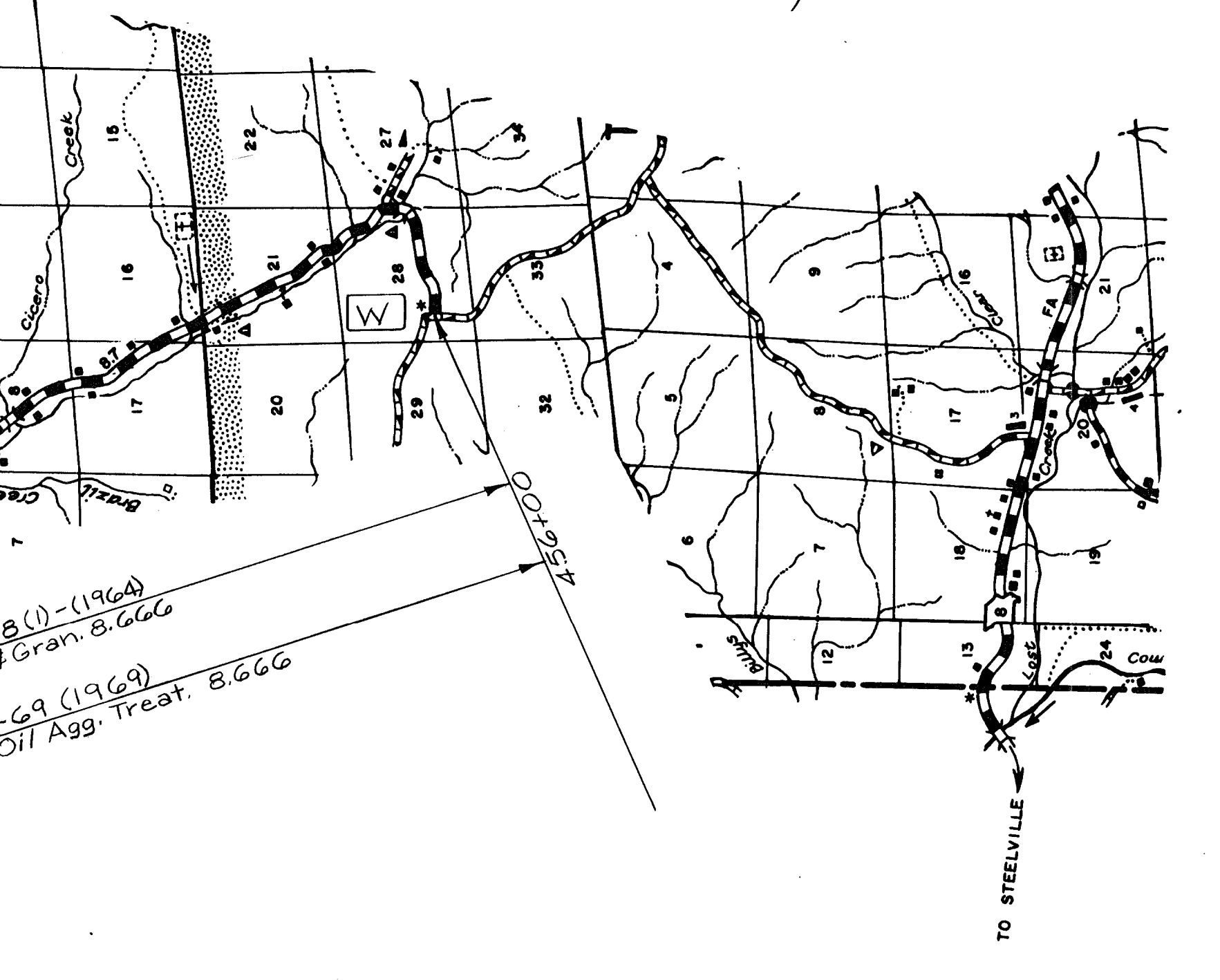
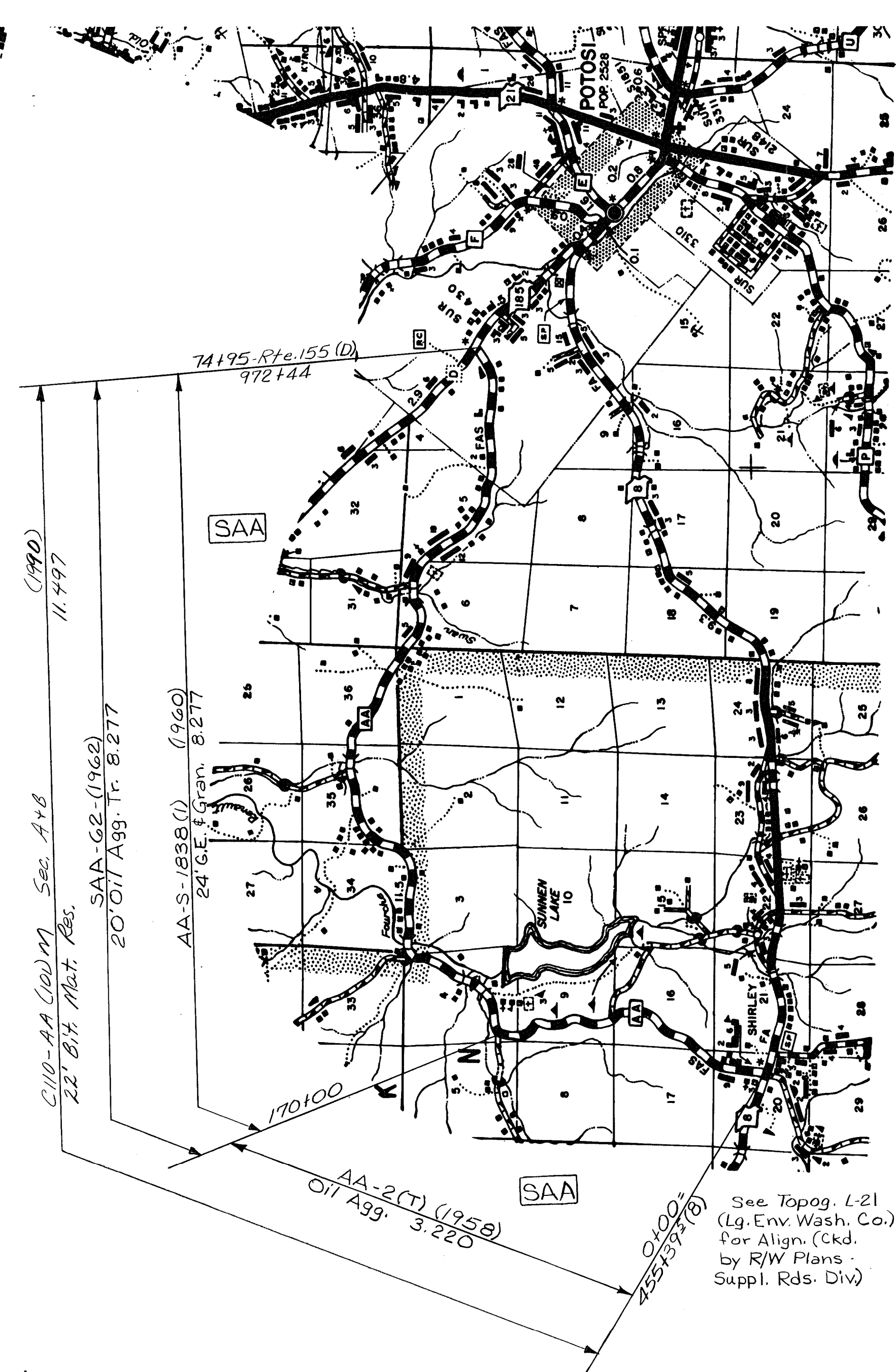
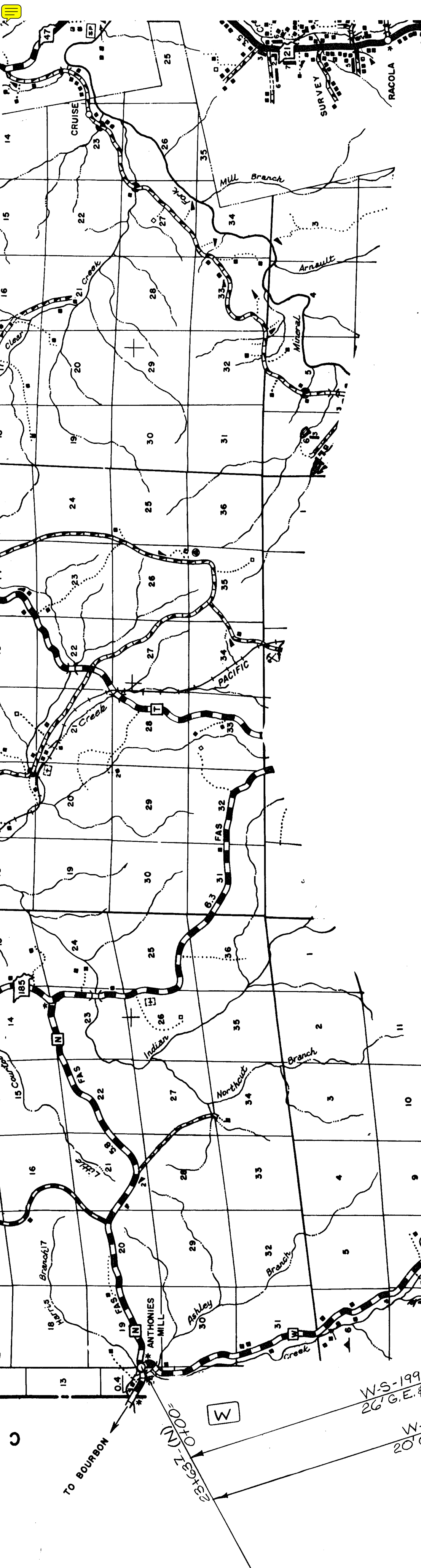


ROUTES: A, H,  
P, BB

110  
WASHINGTON

SHEET 6 OF 10

9



C110-AA (100) M Sec. AxB  
 22' Bit. Mat. Res.  
 11,497 (1990)

SAA-62 (1962)  
 20' Oil Agg. Tr. 8,277

AA-S-1638 (1)  
 (1960)  
 24' G.E. & Grav. 8,277

AA-2 (T) (1958)  
 Oil Agg. 3,220

C110-C (100) M  
 22' Bit. Mat. Res.

See Topog. L-21  
 (Lg. Env. Wash. Co.)  
 For Align. (Ckd.  
 by R/W Plans  
 Suppl. Rds. Div.)

W-S-1998 (1) (1964)  
 26' G.E. & Grav. 8,666

W-69 (1969)  
 20' Oil Agg. Treat. 8,666

C-S-451 (2) (1949)  
 20' G.E. & Grav. 3,804

SC-56 (1956)  
 Oil Agg. 2,803

SC-NRS-454A (1934)  
 3,579

56-47-S (1947)  
 Oil Agg. Tr. 3,935

C110-C (100) M  
 22' Bit. Mat. Res.

W-S-1998 (1) (1964)  
 26' G.E. & Grav. 8,666

W-69 (1969)  
 20' Oil Agg. Treat. 8,666

C-S-451 (2) (1949)  
 20' G.E. & Grav. 3,804

SC-56 (1956)  
 Oil Agg. 2,803

SC-NRS-454A (1934)  
 3,579

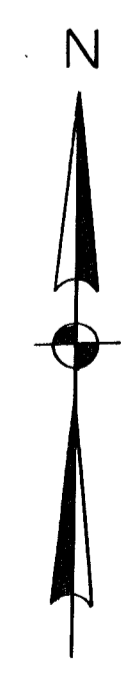
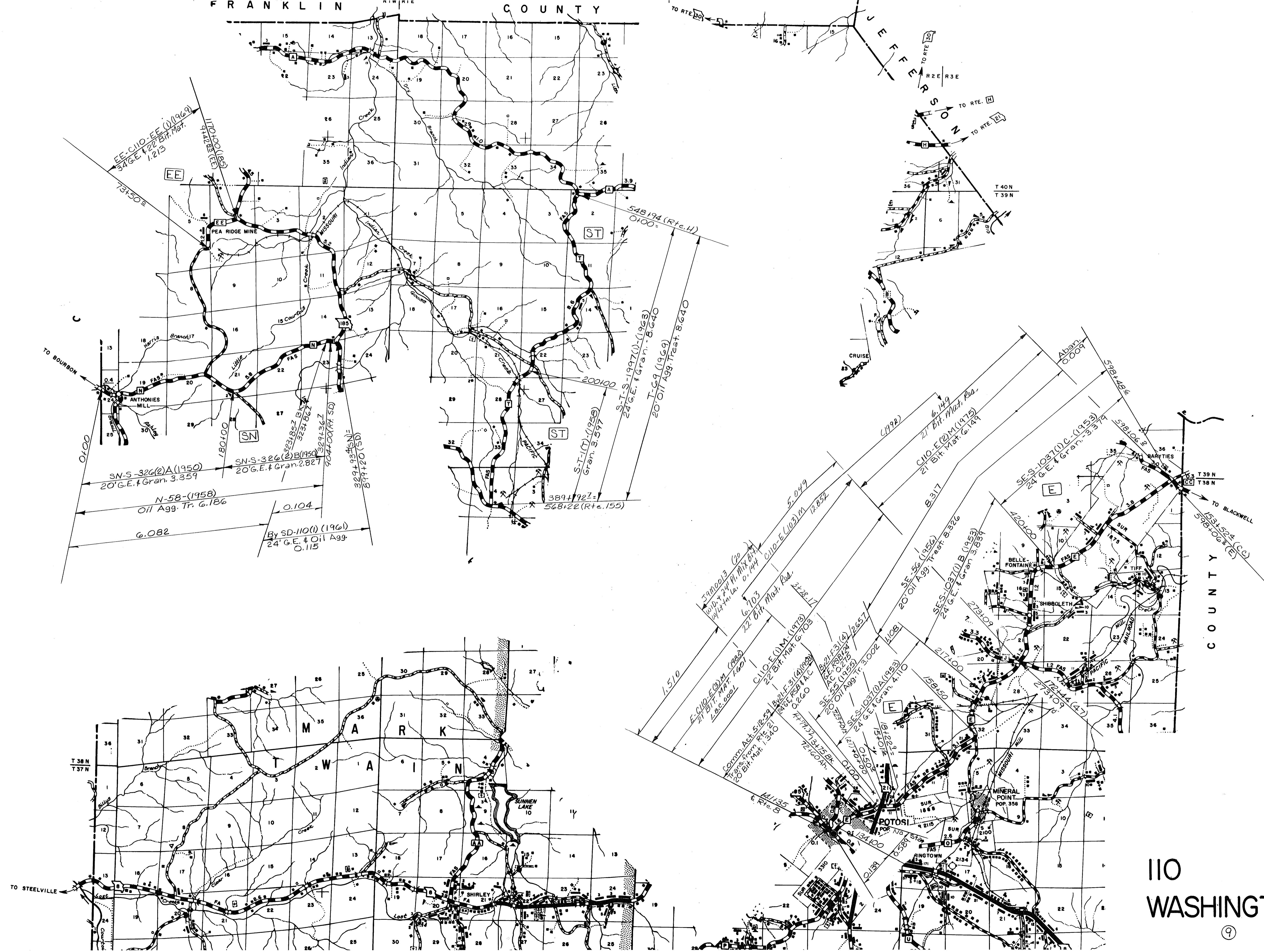
56-47-S (1947)  
 Oil Agg. Tr. 3,935

C110-C (100) M  
 22' Bit. Mat. Res.

110  
 WASHINGTON

ROUTES: C,W,AA

SHEET 7 OF 10

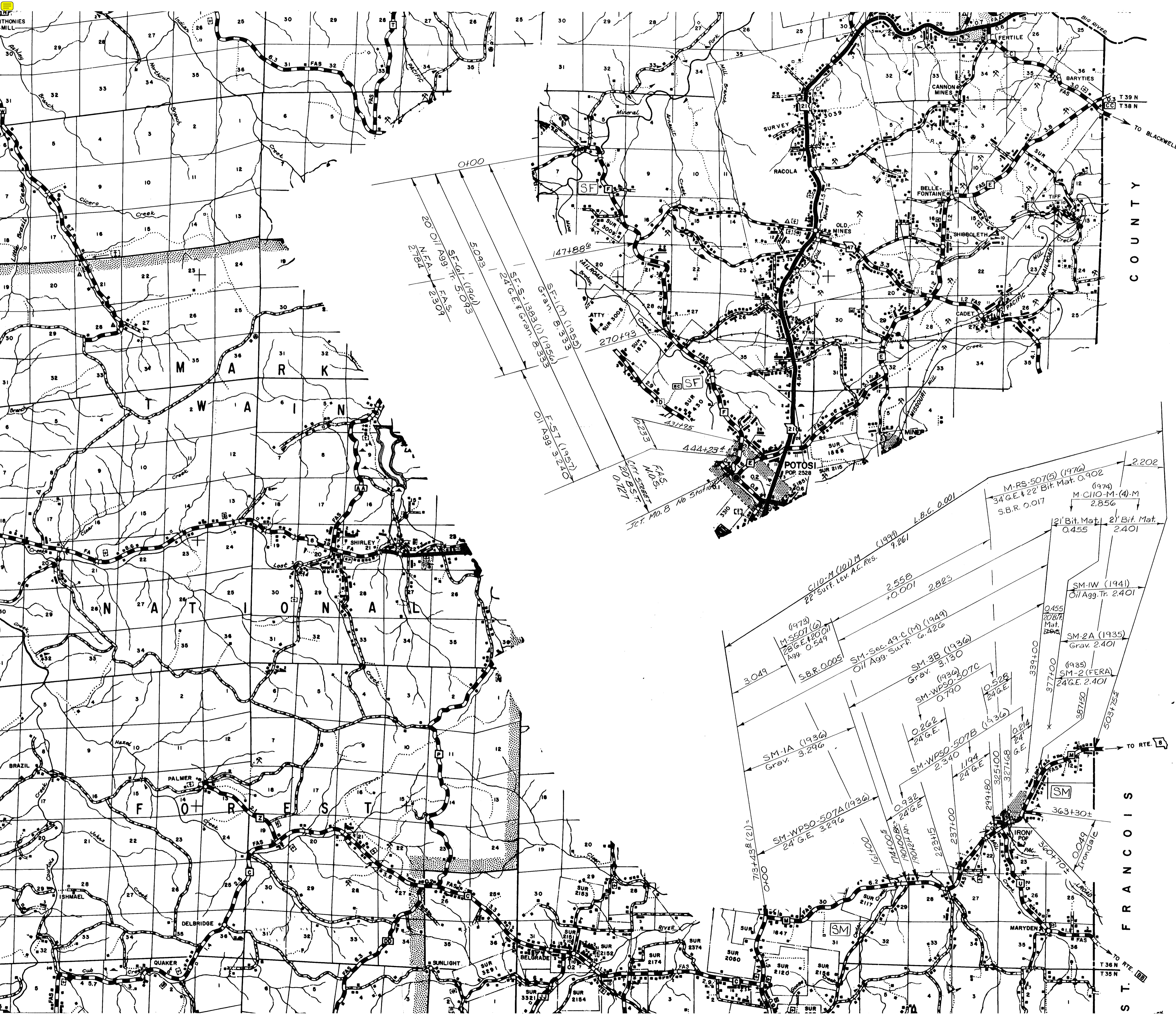


110  
WASHINGTON

ROUTES: E, N,  
T, EE

SHEET 8 OF 10





COUNTY

ST. FRANCISCO

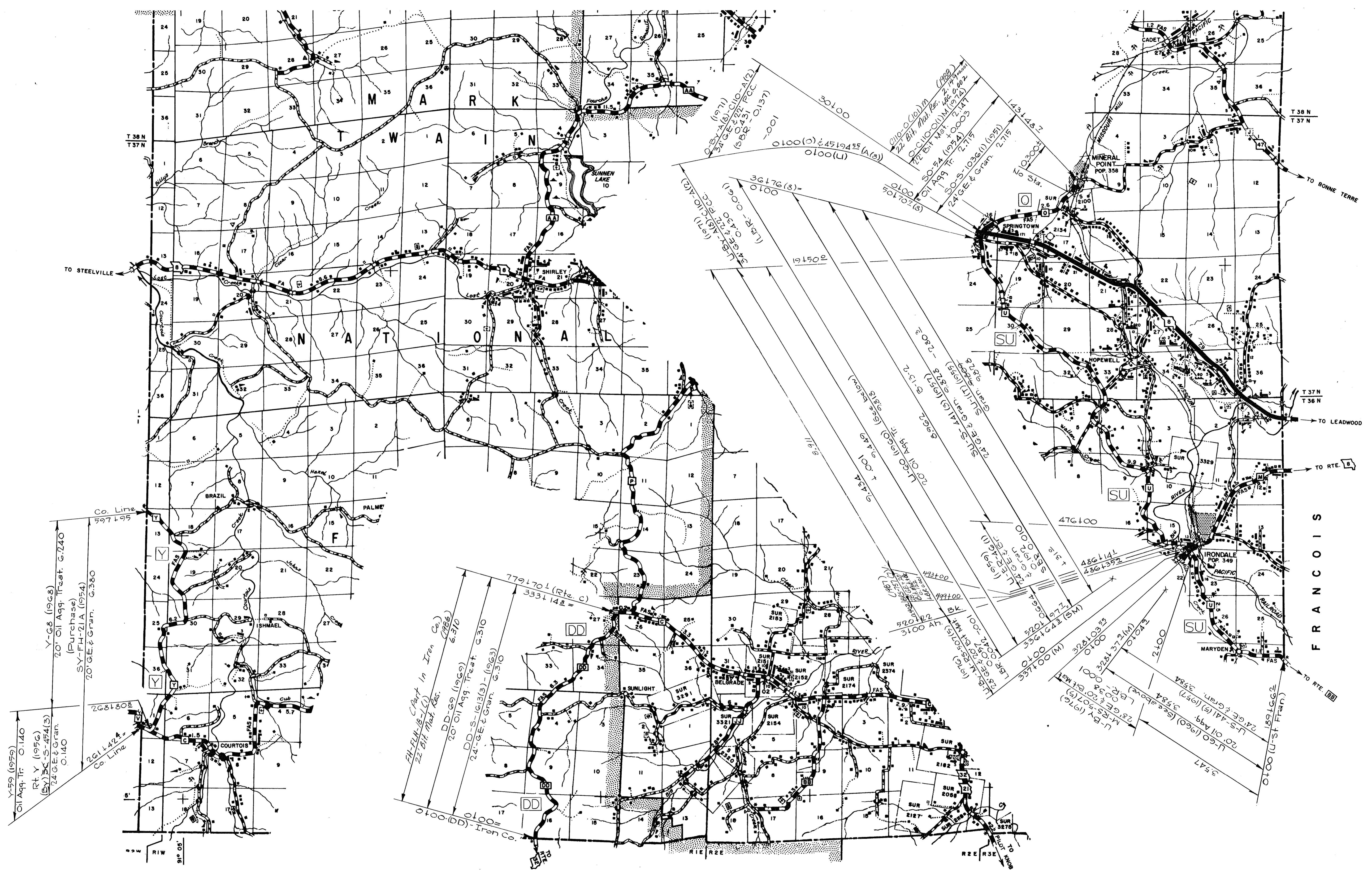


110  
WASHINGTON

ROUTES: F, M

SHEET 9 OF 10

9



FRANCOIS

