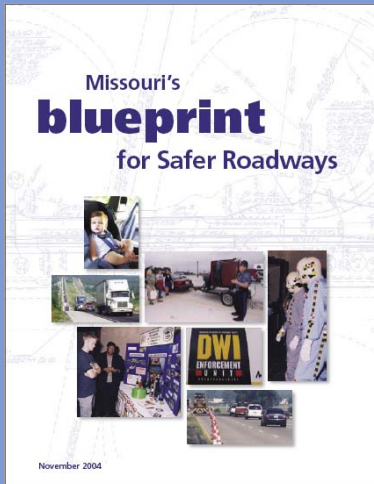
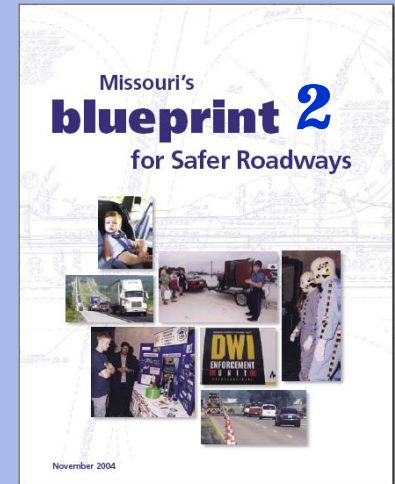


Blueprint 2

Where Are We Going From Here?



John P. Miller
Traffic Safety Engineer
MoDOT



ARRIVE ALIVE

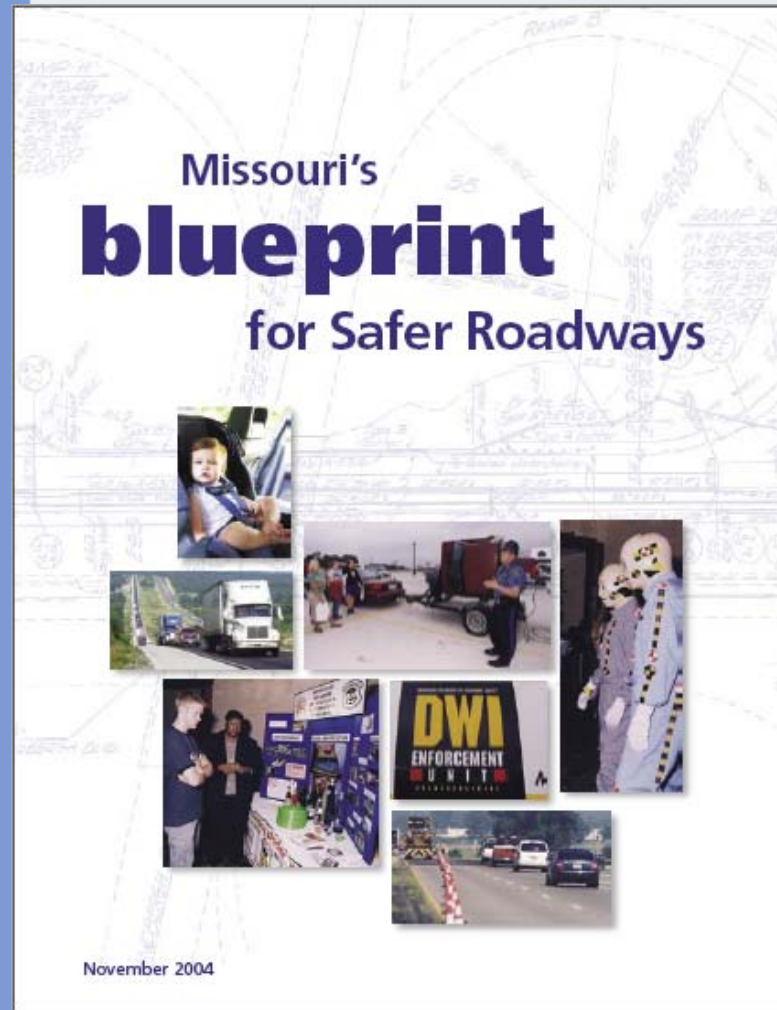
*Missouri Coalition
for Roadway Safety*

Where Have We Been?

ARRIVE ALIVE

*Missouri Coalition
for Roadway Safety*

Accomplishments From Blueprint

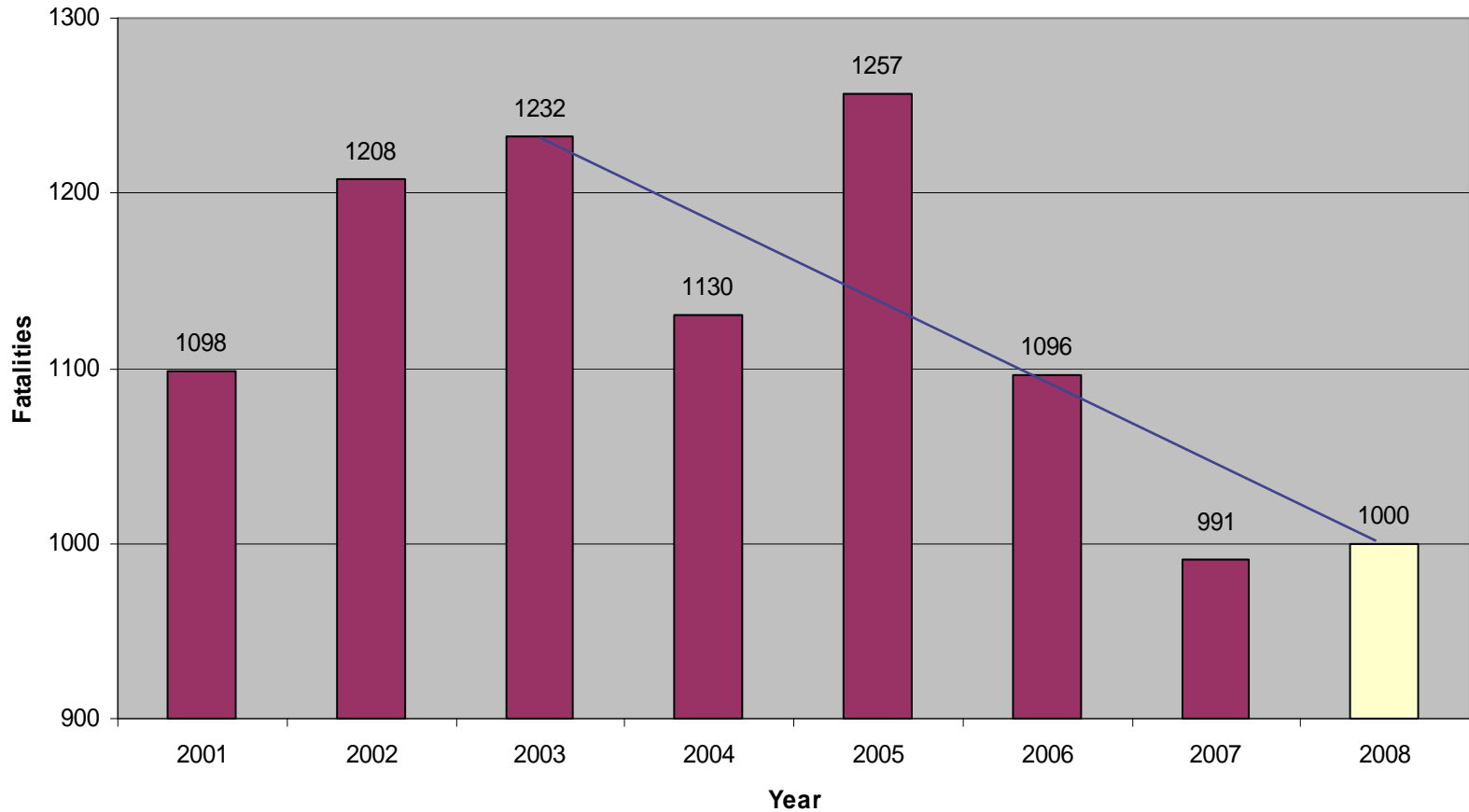


ARRIVE ALIVE

Missouri Coalition
for Roadway Safety

Missouri Fatalities

Missouri Fatalities



ARRIVE ALIVE

Missouri Coalition
for Roadway Safety

Lives Saved

161 fewer people died in crashes in 2006.

105 fewer people died in crashes in 2007.

As a result, over 427 more people can go about their business today.



ARRIVE ALIVE

*Missouri Coalition
for Roadway Safety*

Change In Serious Crash Types And High Risk Drivers

ARRIVE ALIVE

*Missouri Coalition
for Roadway Safety*

Fatality Change By Year

	2006	2007
Killed in Head-on	154	164
Run off Road	494	448
Horizontal Curves	375	350
Collision with Tree	139	142
Aggressive Driving	470	423
Speeding	457	411
Distracted/Fatigued	262	247
Not wearing seat belt	572	477
Young Driver Involved	266	189

ARRIVE ALIVE

Missouri Coalition
for Roadway Safety

Essential Eight At Work

ARRIVE ALIVE

*Missouri Coalition
for Roadway Safety*

Major Roads

Fatal Crashes

Head-on Fatal Crashes

Cross-Median Fatal Crashes

2006

2007

393

369

53

56

30

23



ESSENTIAL EIGHT

- Pavement Marking & Signing
- Rumble stripes
- Median Guard Cable

ARRIVE ALIVE

*Missouri Coalition
for Roadway Safety*

Interstates

Fatal Crashes

Head-on Fatal Crashes

Cross-Median Fatal Crashes

2006

102

7

19

2007

108

6

7



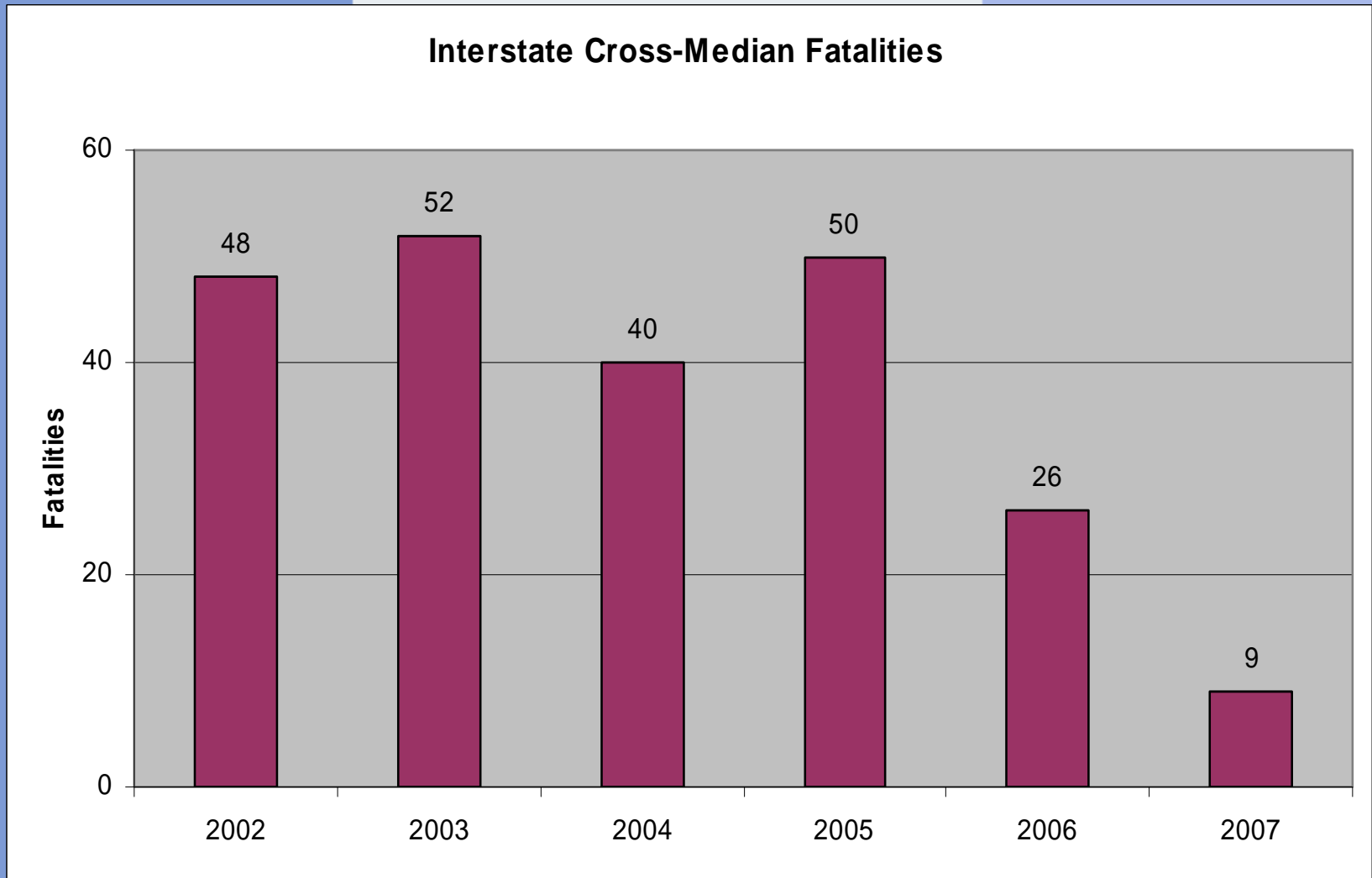
ESSENTIAL EIGHT

- Pavement Marking & Signing
- Rumble stripes
- Median Guard Cable

ARRIVE ALIVE

*Missouri Coalition
for Roadway Safety*

Interstate Cross Median Fatalities

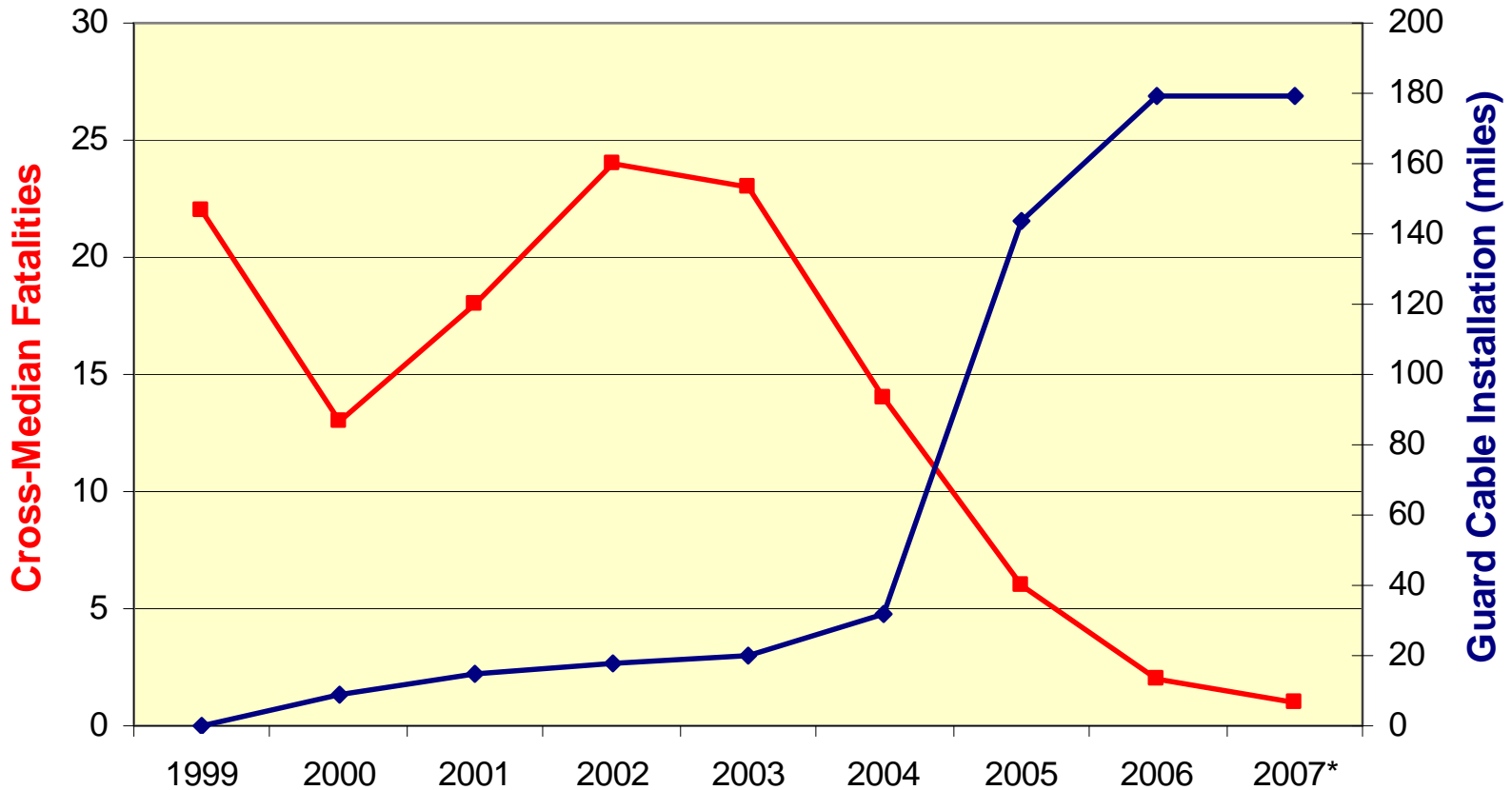


ARRIVE ALIVE

Missouri Coalition
for Roadway Safety

Median Guard Cable

I-70 Cross-Median Fatalities

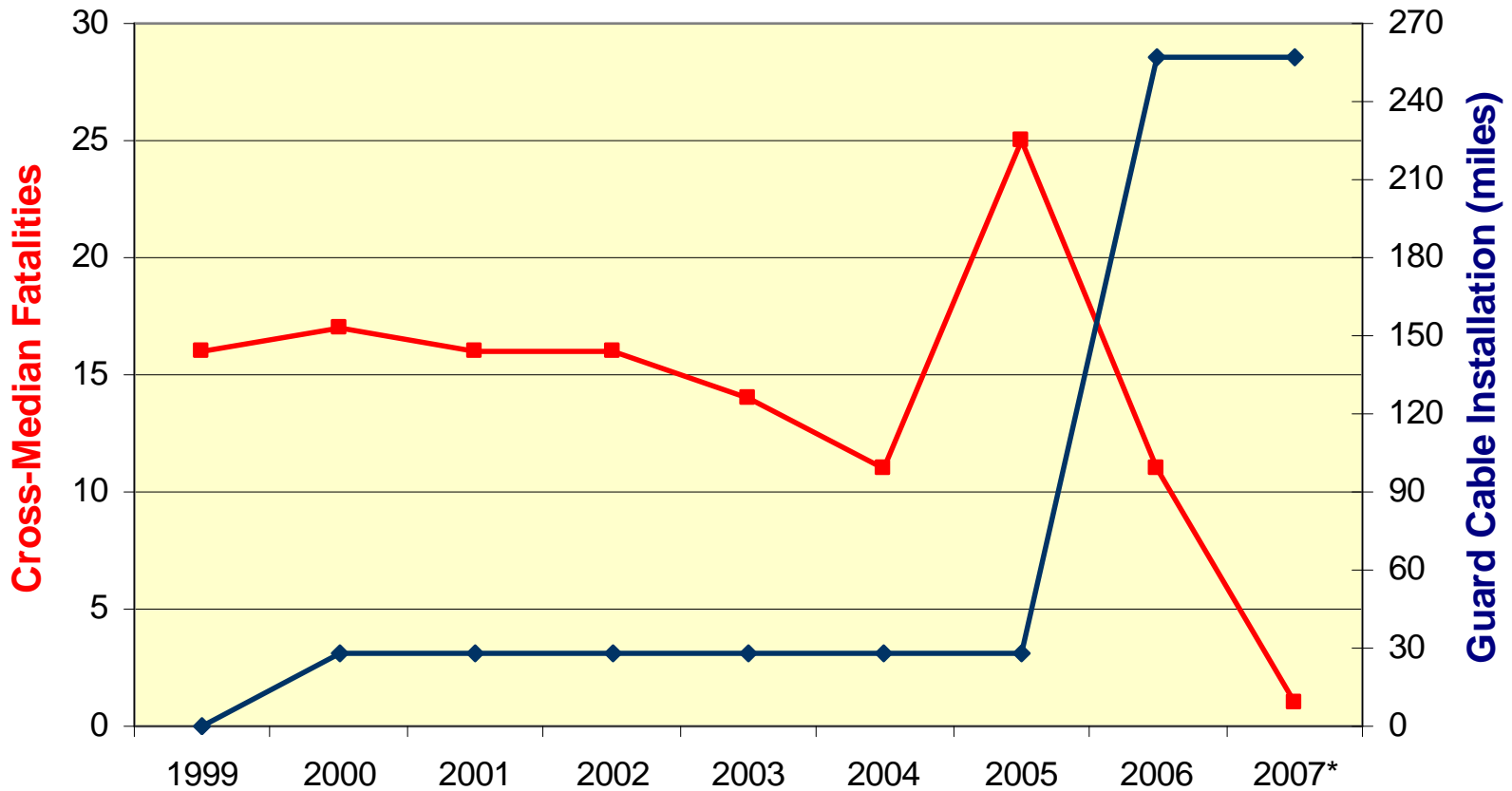


ARRIVE ALIVE

Missouri Coalition
for Roadway Safety

Median Guard Cable

I-44 Cross-Median Fatalities



ARRIVE ALIVE

Missouri Coalition
for Roadway Safety

Run Off Road

Fatal Crashes

2006
455

2007
420



ESSENTIAL EIGHT

- Pavement Marking
- Signing: Curve Speed Plates
- Rumble stripes

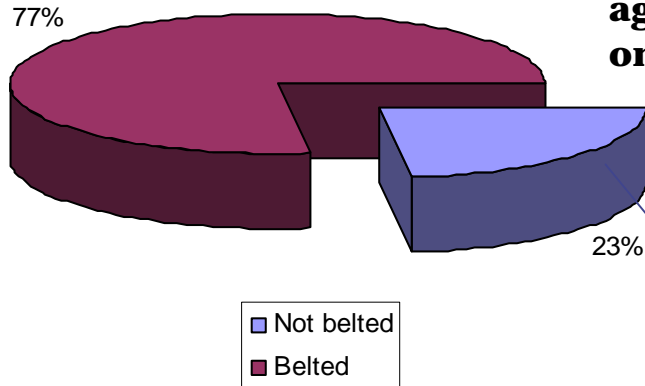


ARRIVE ALIVE

Missouri Coalition
for Roadway Safety

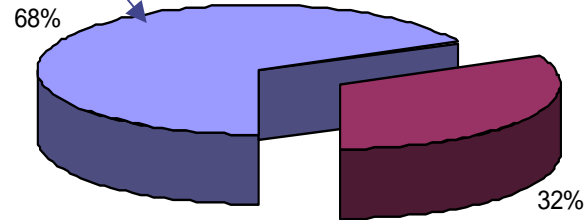
Safety Belts

Observed Usage



Safety belt usage for all age groups only 77%

Fatalities



68% unbelted occupants killed

ESSENTIAL EIGHT

- Primary Safety Belt Law
- Public Information

ARRIVE ALIVE

*Missouri Coalition
for Roadway Safety*

Safety Belts

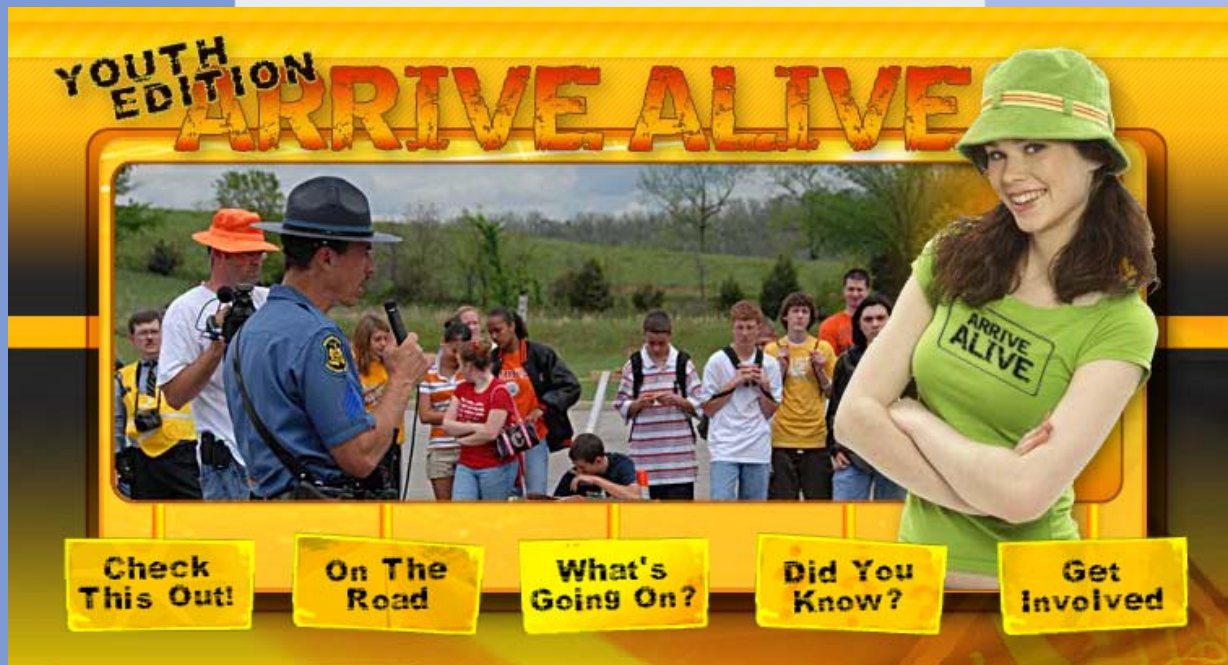
	OVERALL SAFETY BELT USAGE (Drivers & Front Seat Outboard Passengers)		CHILD SAFETY SEATS	TEENS (Drivers & Front Seat Outboard Passengers)	COMMERCIAL MOTOR VEHICLE DRIVERS
YEAR	MO	National	MO	MO	MO
2007	77.10%	Not Available	88%	61%	67.50%
2006	75.18%	81%	83%	57.90%	65.64%
2005	77.41%	82%	82%	56.40%	65.73%
2004	75.88%	80%	77%	53.50%	58.80%

**Nonuse of Occupant Protection Devices Involved Fatalities:
Down 23% since 2005 - 144 fewer people died in 2007**

ARRIVE ALIVE

*Missouri Coalition
for Roadway Safety*

Young Drivers



Young Driver Involved Fatalities (15-20): Down 27% for 2007

ESSENTIAL EIGHT

- **Primary Safety Belt Law**
- **Public Information**

ARRIVE ALIVE

*Missouri Coalition
for Roadway Safety*

Young Drivers



ARRIVE ALIVE

*Missouri Coalition
for Roadway Safety*

Young Drivers

YOUTH

Get the Facts

Never Made It

Team Spirit

School Bus Safety

Safe Routes to School

Child Passenger Safety

Bicycle and Pedestrian Safety

Missouri State Highway
Patrol Videos

Still Need Convincing?

Room to Live
(video)

No Seatbelt No Excuse
(video)

www.drivingskillsforlife.com

www.dontserveteens.gov



Young Drivers Statistics

Drivers under the age of 21 comprise 10% of the licensed drivers in the state, but were involved in nearly 30% of the traffic crashes.

ARRIVE ALIVE

Missouri Coalition
for Roadway Safety

Human Factors



	2006	2007
Alcohol/Drugs Involved Fatalities:	288	254

ESSENTIAL EIGHT

- **DWI Enforcement**
- **Public Information**

ARRIVE ALIVE

*Missouri Coalition
for Roadway Safety*

Aggressive Driving



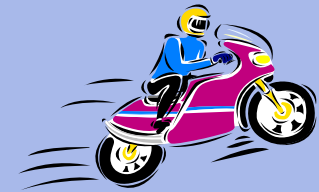
ESSENTIAL EIGHT

- Speed Enforcement
- Public Information

ARRIVE ALIVE

*Missouri Coalition
for Roadway Safety*

Motorcyclists



“The outcome of a crash involving a motorcycle can often be devastating. It is estimated that 20% of passenger vehicle crashes result in injury or death, while an astonishing 80% of motorcycle crashes result in injury or death.”

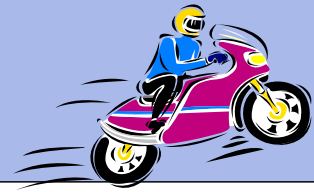
ESSENTIAL EIGHT

- Public Information

ARRIVE ALIVE

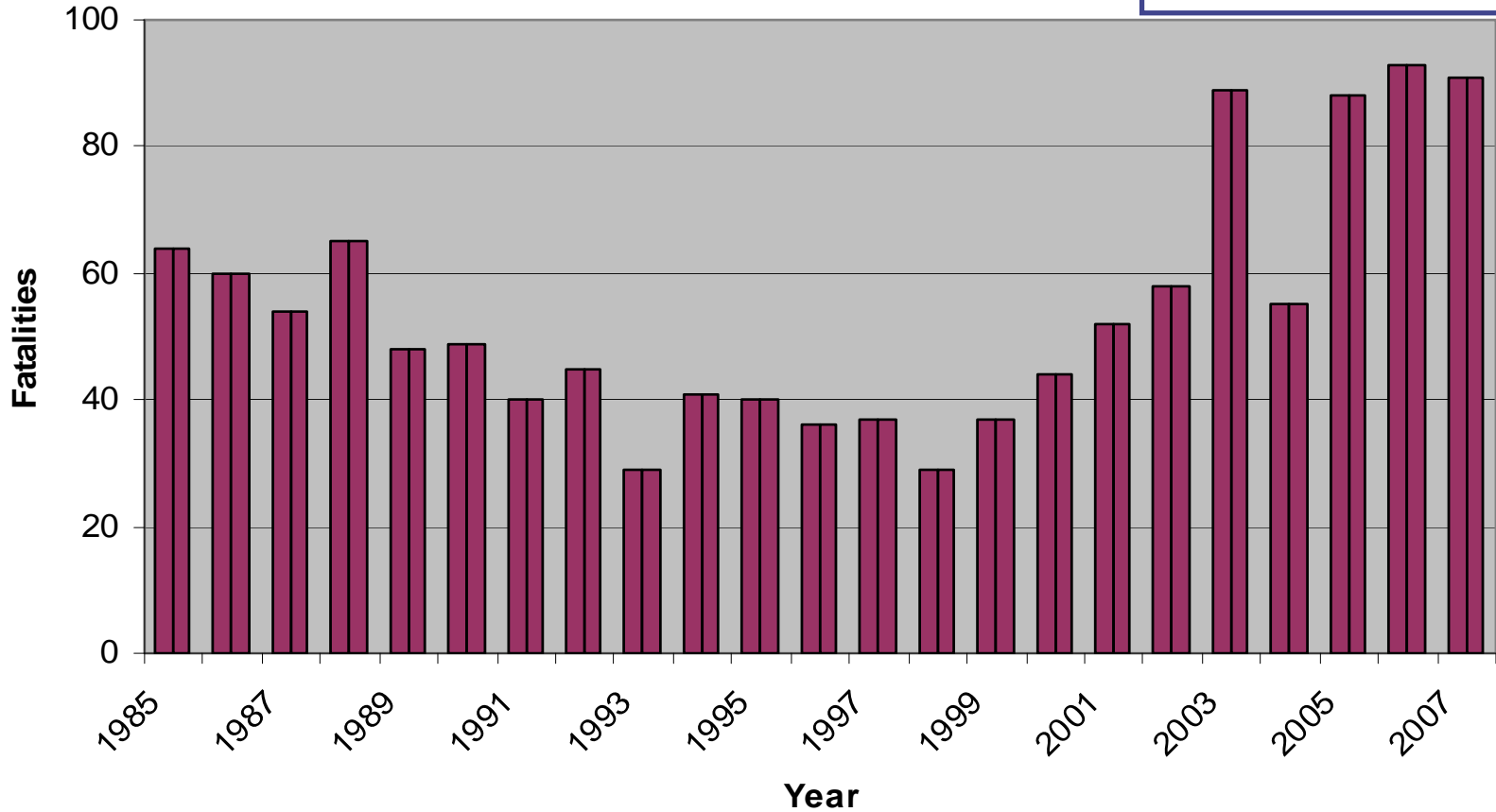
*Missouri Coalition
for Roadway Safety*

Motorcyclists



Motorcycle Fatalities

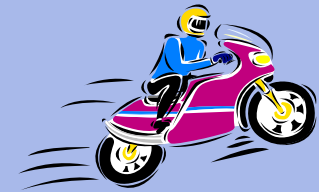
91 in 2007



ARRIVE ALIVE

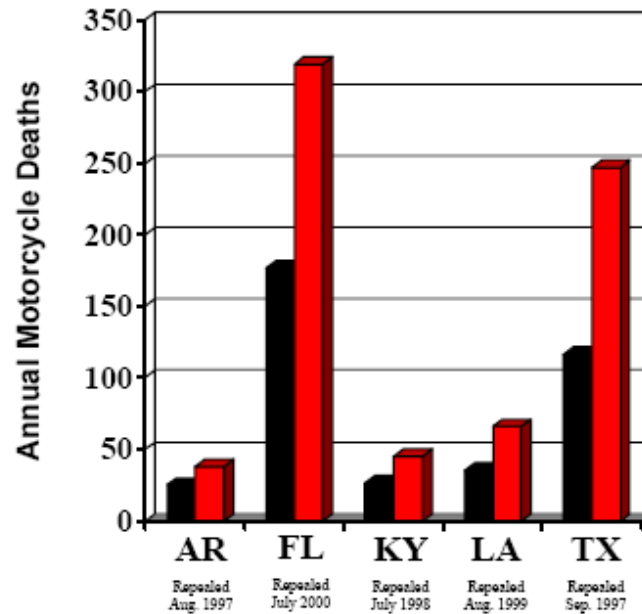
Missouri Coalition
for Roadway Safety

Motorcyclists



MOTORCYCLE DEATHS

in
5 STATES BEFORE AND AFTER HELMET LAW REPEALS



■ Motorcycle deaths for the year before the helmet law was repealed
■ Motorcycle deaths for 2002



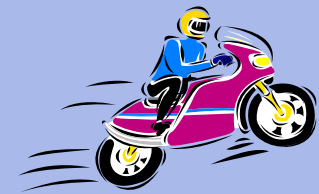
**ADVOCATES
FOR HIGHWAY
AND AUTO SAFETY**
www.saferoads.org

Data is taken from the National
Highway Traffic Safety
Administration's Fatality Analysis
Reporting System, 1996-2002.

ARRIVE ALIVE

*Missouri Coalition
for Roadway Safety*

Motorcyclists

A photograph of a man wearing sunglasses, a dark jacket, and blue jeans, sitting on a silver motorcycle in a grassy field. The motorcycle has a large front fairing and a side bag. The background shows a green field and a white structure.

 Look. Learn.
ARRIVE ALIVE.

Watch Out for
Motorcyclists.
www.saveMOLives.com

ARRIVE ALIVE

*Missouri Coalition
for Roadway Safety*

Analysis By Region

ARRIVE ALIVE

*Missouri Coalition
for Roadway Safety*

Fatalities By Region

Region	2005	2006	2007
1. Northwest	66	47	37
2. North Central	46	25	34
3. Northeast	81	54	60
4. Kansas City Area	179	147	155
5. Central	129	139	119
6. St. Louis Area	224	200	206
7. Southwest	121	128	88
8. Springfield Area	148	134	89
9. South Central	120	101	109
10. Southeast	120	109	94

ARRIVE ALIVE

Missouri Coalition
for Roadway Safety

Significant Counties In 2007

■ Fatalities Down

- Greene -21
- Jackson -14
- Cole -13
- Barry -12
- St. Louis -11
- Webster -11
- Callaway -9
- St. Charles -9
- Boone -8
- Dunklin -8
- Jasper -8
- McDonald -8
- Scott -8

■ Fatalities Up

- St. Louis City +10
- Franklin +10
- Johnson +8
- Camden +7
- Pettis +6
- Marion +6
- Maries +6
- Gasconade +6

St. Louis City, Franklin and Johnson Counties all had significant reductions in 2006.

ARRIVE ALIVE

Missouri Coalition
for Roadway Safety

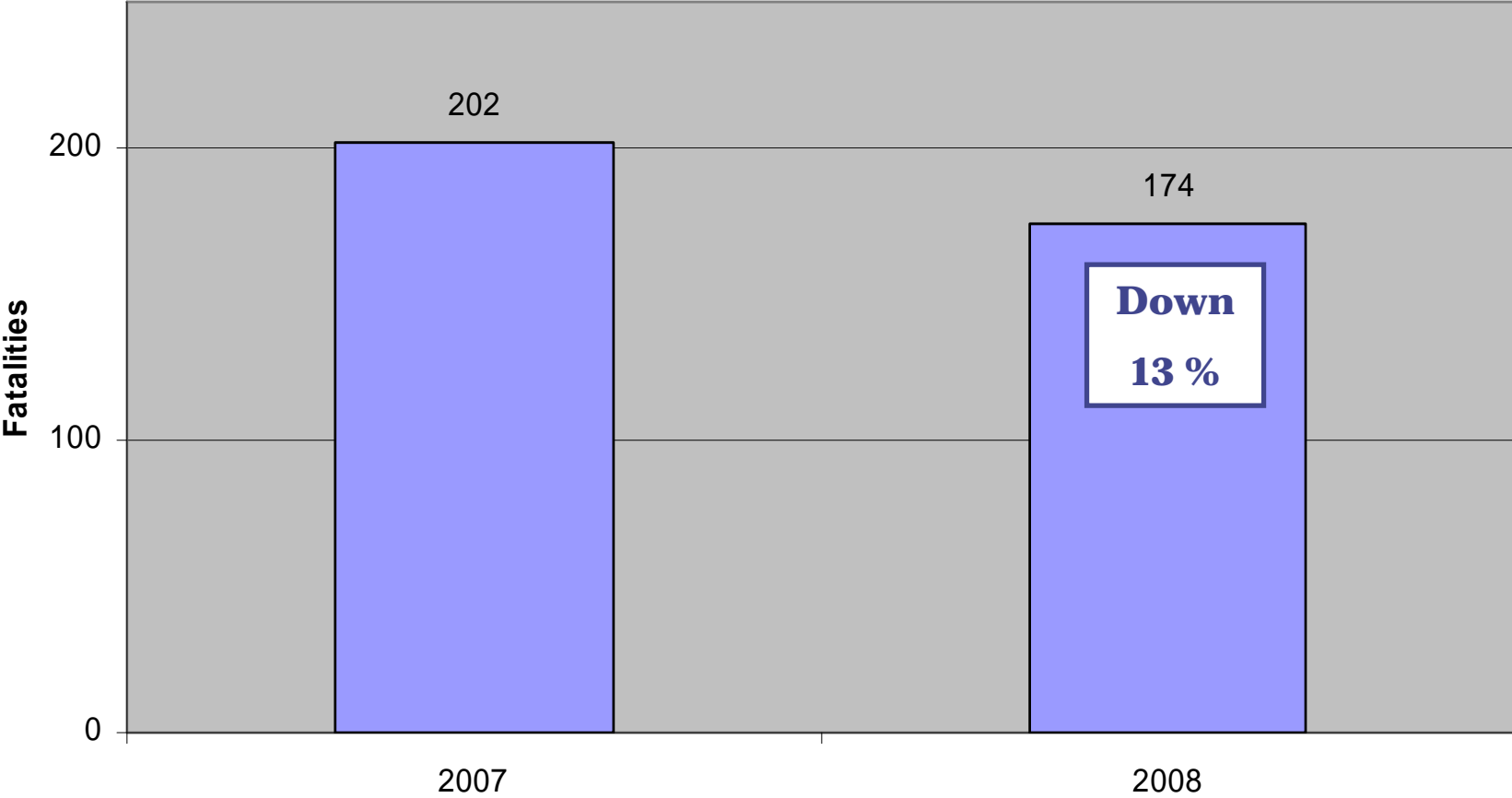
Progress In 2008

ARRIVE ALIVE

*Missouri Coalition
for Roadway Safety*

Missouri Fatalities

Missouri Fatalities (as of March 24, 2008)

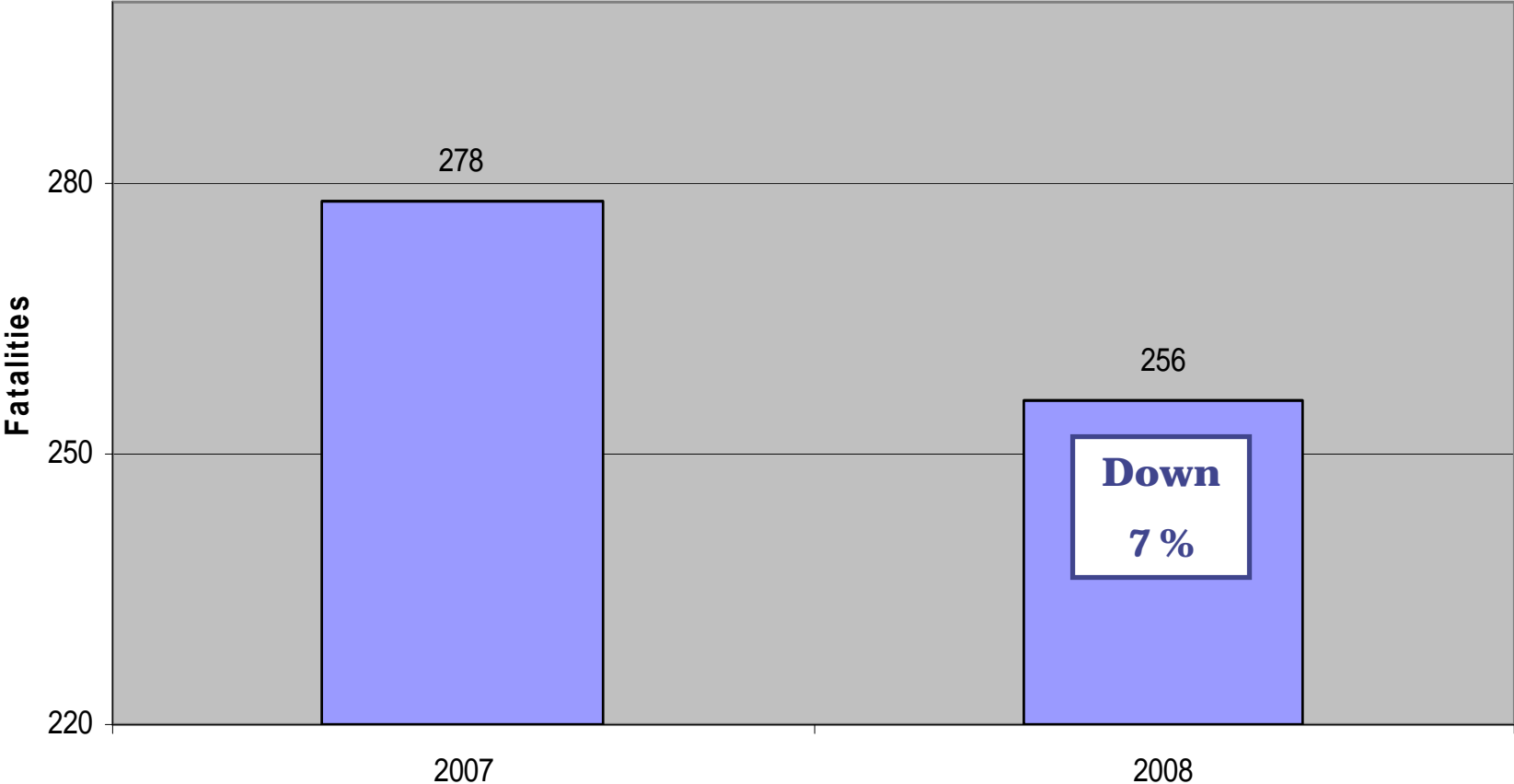


ARRIVE ALIVE

Missouri Coalition
for Roadway Safety

Missouri Fatalities

Missouri Fatalities (as of April 27, 2008)



The New Blueprint - 2008

ARRIVE ALIVE

*Missouri Coalition
for Roadway Safety*

Team Assembly

Missouri Department of Transportation

Missouri State Highway Patrol

Department of Revenue

Department of Health and Senior Services

University of Central Missouri – Missouri Safety Center

ARRIVE ALIVE

*Missouri Coalition
for Roadway Safety*

Timeline

- **Team met for first time on February 7, 2008**
- **Revised draft complete by June 1, 2008**
- **Comment period for partners: June 1 – 30, 2008**
- **Goal to be set by July 2008 (by printing deadline)**
- **The new Blueprint document will be available at the 2008 Blueprint Conference on October 27 – 29, 2008 in Kansas City**

ARRIVE ALIVE

*Missouri Coalition
for Roadway Safety*

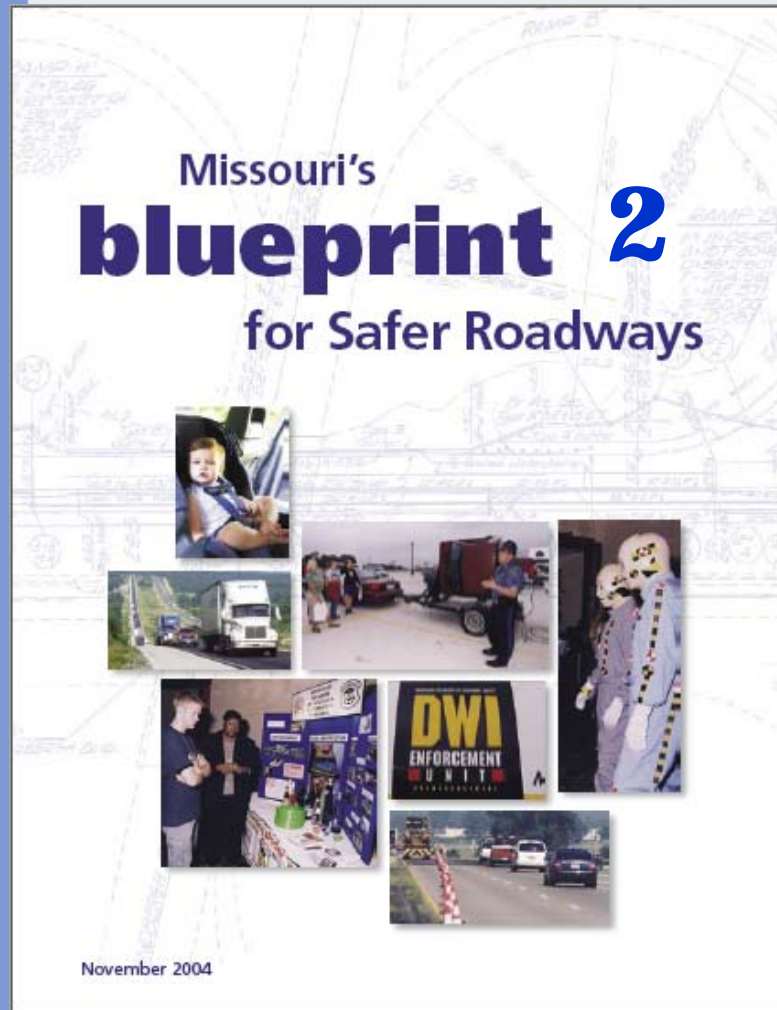
Blueprint Team At Work

- 1. Determine the Title**
- 2. Set the Fatality Reduction Goal**
- 3. Develop the Emphasis Areas, Targets, and Strategies**
- 4. Continue to Focus on Crash Types**
- 5. Determine System-wide Safety Solutions**
- 6. Develop the New Essential Eight**
- 7. Involve All E's in the Strategies**
- 8. Implement the new Blueprint**

ARRIVE ALIVE

*Missouri Coalition
for Roadway Safety*

The New Blueprint – Title?



ARRIVE ALIVE

Missouri Coalition
for Roadway Safety

Fatality Reduction Goal?

Missouri's fatality reduction goal was set at "1,000 or fewer fatalities by 2008" - an 18.8 percent reduction from 2003.

- 900 by 2012 (reduction of 91 fatalities)**
- 800 by 2012 (reduction of 191 fatalities)**
- 400 by 2012 (reduction of 591 fatalities)**

The fatality reduction goal will be announced in October at the Blueprint Conference in Kansas City.

ARRIVE ALIVE

*Missouri Coalition
for Roadway Safety*

Emphasis Areas?

Emphasis Area I – Serious Crash Types

Emphasis Area II – High-Risk Motorists

Emphasis Area III – Special Vehicles

Emphasis Area IV – Vulnerable Roadway Users

Emphasis Area V – Special Roadway Environment?

ARRIVE ALIVE

*Missouri Coalition
for Roadway Safety*

The New Essential Eight?

Essential Eight

1. **Pass Primary Seat Belt Law**
2. **Targeted Enforcement**
3. **Public Education**
4. **Install Rumble Strips**
5. **Roadway Visibility (Signs & Stripes)**
6. **Install Median Cable Barrier**
7. **Punish Drunk Drivers**
8. **Install and Maintain Shoulders**



ARRIVE ALIVE

*Missouri Coalition
for Roadway Safety*

Implement The New Blueprint

Why have we had success?

- Each region of the state is focused on reducing fatalities and disabling injuries.**
- Each region of the state has leaders and followers.**
- Each region of the state has used the Blueprint to implement numerous strategies.**

ARRIVE ALIVE

*Missouri Coalition
for Roadway Safety*

There Should Be NO Questions?

MoDOT's Traffic Safety Section

John P Miller – Traffic Safety Engineer

John Schaefer – Sr. Traffic Studies Specialist

Darla Stumpe – Sr. System Management Specialist

Hank Krull – Technical Support Engineer

ARRIVE ALIVE

*Missouri Coalition
for Roadway Safety*